

4644 Clark Ave.
Long Beach, CA 90808

(562) 421-4711

bethanylutheran.org



Church Office Hours:

Monday—Thursday
9 am — 12 pm

Closed Fridays

Weekly
CHIMES
BETHANY LUTHERAN CHURCH

WEEK OF
JUNE 9-15



Vacation Bible School
JUNE 24-28, 2024
8:30A.M.-12:00P.M.
ON BETHANY'S CAMPUS

Sign-up for this free event today!



SURFA
diving into friendship with God

PLEASE PRAY FOR:

- Michelle Bialorke
- Betty Greene
- Walter Greene
- Cristina LaSalvia
- Phyllis Lee
- Ron Miner
- Tom Mooney
- Heidi Moyer-
- Juswanto
- Larry Neasel
- Suzanne Reed
- Liz Ruhl
- Juanita Rush
- Shirley Sisson
- Martin & Nancy
- Wastell
- Joyce Yocam

Worshiping Faithfully Hebrews 10:25

PRAY WITH COASTAL MISSION SOCIETY



On Pentecost Sunday, we announced Bethany's partnership and the launch of the new Coastal Mission Society, which is aiming to convene churches around the further and intentional expansion of Christ's church here in coastal Southern California. We are thrilled to be a part of this crucial ministry, and one way we can initially get involved is by joining the rest of the mission society in prayer. Please visit coastalmission.org/pray to sign up as a Prayer Partner and receive Coastal's monthly prayer update and other valuable prayer resources to aid your time with God, living out Christ's call in Luke 10:2 for us to pray.



Serving Passionately Ephesians 2:10

SUNDAY MORNING NURSERY CHILDCARE PROVIDER POSITION OPENING:



Do you love kids and love Jesus? We might have just the position for you! We are seeking one more childcare provider to watch over our littlest ones during morning worship services. Our nursery employees work in teams of two on Sundays welcoming our littlest ones to the nursey, providing age-appropriate care, interacting with the children and parents. They have the opportunity to share Jesus through Christian behaviors with our youngsters. **Hours are 7:45 AM - 10:45 AM Sunday mornings.** Candidates must be 18 years old and satisfactorily complete employment processes. To apply or for additional information, please contact Alissa Brege at abrege@bethanylutheran.org.

BETHANY LUTHERAN SCHOOL IS HIRING FOR FALL 2024!

8TH GRADE HOME ROOM / MIDDLE SCHOOL HISTORY TEACHER

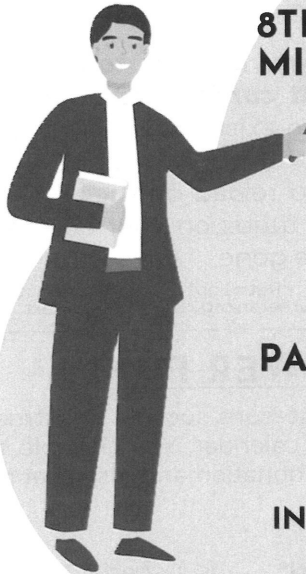
We are seeking a candidate who will provide an environment that is Christ-centered, engaging and academically excellent. Candidates must possess excellent communication and collaboration skills, the desire to work cooperatively with team-mates and have a whole-parish understanding of ministry. Teaching credential a must. A rostered teacher is preferred.

PART-TIME P.E. TEACHER

We are seeking a part-time PE teacher for next year. This person would teach PE two days per week, Grades K-8. A teaching credential is preferred.

INTERESTED OR KNOW SOMEONE WHO MIGHT BE?

Contact: mfink@bethanylutheran.org



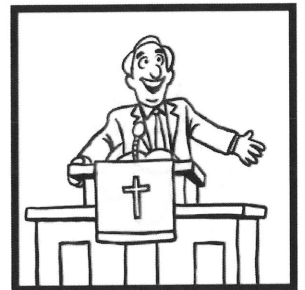
CONGRATULATIONS AND YOU WILL BE MISSED

Pastor Mark!

It has been a joy for us at Bethany to partner in ministry with Pastor Mark Siegert for nearly 4 years.

Pastor Mark's passion for teaching is clearly evident in all he does! That passion will obviously be a blessing to Crean Lutheran High School, where Pastor Mark will serve full time starting this fall.

What does this mean? While Pastor Mark will come back and serve as a guest preacher occasionally, his official ministry with us ends on July 7th. If you would like to drop Pastor Mark a note of appreciation, you can bring it to the church office!



Giving Proportionately: Luke 21:1-4

SCRIP BRAND UPDATES!



 **RaiseRight**
Formerly ShopWithScrip

Earnings for Uber and UberEats gift cards have increased from 2.5% to 3%. In addition, physical gift cards are now available in \$25 and \$100 amounts in addition to their current offering of eGift cards in amounts from \$15 to \$500.

Beginning on May 30 you will no longer be able to reload Chevron, Exxon or Lowe's physical gift cards. These brands are launching new gift cards, so reload on existing cards will be unavailable until the new cards are introduced. New cards will be available to order starting June 3 and reload on these new cards will be available shortly after. Any funds on your current cards will continue to work until funds are gone.

- Ruth Lopez (Scrip Coordinator)
rlopez@bethanylutheran.org / 562-420-7783 ext. 58

DONATE TO BETHANY'S ALTAR FLOWER FUND!

Flowers are used to decorate the altar every Sunday, for special seasons such as Christmas and Easter, as well as other important dates during the church calendar. You are able to make two types of donations to the Altar Flower Fund: a general donation and a special request with recognition.



- **A SPECIAL REQUEST WITH RECOGNITION*** is a special type of Altar Flower donation. This request will be printed in the bulletin. For example, it could be given in memory of a person who has gone before us, for a wedding anniversary, baptismal birthday or a birthday celebration, etc. **This recognition has a suggested donation of \$75.**
- **A GENERAL DONATION TO THE ALTAR FLOWER FUND** enables Bethany to have flowers in worship and for our shut-in and hospitalized members to receive flowers from our flower ministry team, even when no one has ordered flowers for specific purposes on Sunday. **This General Donation is for any amount you wish .**

*If you are making a **Special Request with Recognition**, please use this form to let us know of your donation **for a specific Sunday date** and what the significance of that donation is towards. **IMPORTANT:** Please complete this form at least **2 weeks prior** to that date, so that information regarding your donation can be printed in the Sunday bulletin for the date requested.



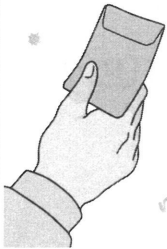
BETHANY'S BENEVOLENCE FUND

Summer time but the liv'ns not easy. While summer time is high volume of travel and lower volume of people on campus, historically speaking it is when our pastoral staff is asked for assistance more than any other season, with the exception of Christmas.



At Bethany, one of the means through which we offer assistance is our benevolence fund. At this moment our benevolence fund is running rather low. If the Lord moves you to help Bethany care for "the least of these" with a gift over and above your regular offerings you can make a special designation to Benevolence by noting such on your check, envelope or on-line.

WE GIVE HIM BUT HIS OWN



TITHE AND OFFERINGS

At Bethany we know that "our stuff is not our stuff!" All that we have, all that we are, is a gift from Him. We also know that giving is a spirit-given compulsion. For Jesus Christ, in whose likeness we are being transformed daily, is the ultimate giver. Your gifts fund ministry that give people Jesus. His words, His promises, His presence, His gifts, His comfort, His strength are given through the gifts you are now giving Him. We thank and honor you for these gifts, because they thank and honor Him!

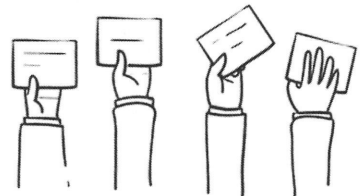
There are multiple ways to give to Bethany Lutheran Church including:

Giving Online, Text to Give, Online Bill-Pay, US Mail, Offering Box

Please see the GIVING link on Bethany's website for more information on how to make your offering. ***If you need further assistance, contact our Financial Administrator at mshaeffer@bethanylutheran.org***

UPCOMING VOTERS MEETING!

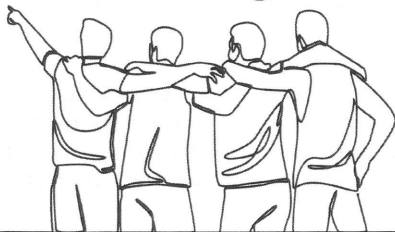
We will have our Spring Voters meeting on Sunday June 23 at 11:00. We will vote on the proposed budget. More information to come next week.



Community Connections continued:

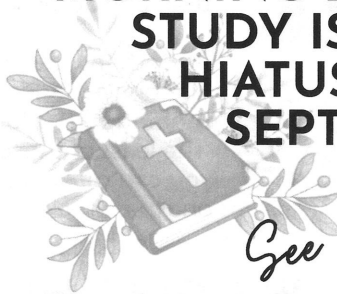
MEN'S RETREAT

Coming!



A men's retreat is being planned for the weekend of September 13-15 at Luther Glen Retreat Center in Oak Glen. This is a wonderful facility that we have used before. The cost for this is \$275 which includes 2 nights and 5 meals. Bedding and towels are provided for our stay. Retreat starts with dinner on Friday and concludes with Worship on Sunday morning. Theme and program being planned. Plenty of time for fellowship. Should you only be able to join us for the day Saturday, cost is \$146 for the full day and 3 meals. More information to come in the following weeks. Any questions please contact Karl Fink using his email kfink@bethanylutheran.org or call his office at 562.421.4711. ext 19.

WOMEN'S THURSDAY MORNING BIBLE STUDY IS ON HIATUS UNTIL SEPTEMBER.



See you then!

JOIN US FOR SUMMER BIBLE STUDY

WHERE: BETHANY
LUTHERAN'S
YOUTH ROOM

WHEN: SUNDAYS DURING
THE SUMMER
11:30 - 1 PM

AGES: 18-25

Happening now!

SUMMER MISSION BOOT CAMP

Join Coastal Mission Society's inaugural Mission Boot Camp where you can be trained as a missionary right in your neighborhood, workplace, and/or campus! This 3-session summer "boot camp" fireside chat will prepare you with practical ways to love your neighbors, make disciples, and design a mission outpost in your home, workplace, or campus. Facilitators are "serial" church planters John Alwood and author, Peyton Jones. Cost = \$0 (covered by our strategic partners!)

Dates: **June 23rd / 3-7:30 pm**
Long Beach
*Loving our Neighbors
Jesus-Style*

July 14 / 3-7:30 pm
Carlsbad
*Gathering a Mission
Outpost*

August 11 / 3-7:30 pm
Long Beach
*Missionary Spiritual
Habits*





VACATION BIBLE SCHOOL DONATIONS NEEDED!

THANK YOU to everyone who made a purchase off of our VBS Amazon Wishlist...**EVERYTHING** has been purchased from the Wishlist!!

WOW...your support is a huge blessing to the success of VBS!

If you feel so inclined to donate, we are looking for Visa Gift Cards in \$50 and \$25 increments. These Visa Gift Cards will be used towards our VBS Tidal Snack needs. And to top it off, you can purchase these through SCRIP with Ruth Lopez. She has on hand Visa gift cards in different dollar increments that fit your giving need.

Your support is crucial in making our SCUBA Vacation Bible School a success! We are incredibly grateful and blessed by your continued support, partnership and commitment to our Bethany Family.

If you have any questions do not hesitate to call, text, or email Kayleigh Lopez at 309-307-6583, klopez@bethanylutheran.org

CELEBRATE DAD WITH A ROOT BEER FLOAT!



Join us on Father's Day (Sunday, June 16th!) after both the 8 and 9:30 am worship services at Bethany Lutheran in Friendship Square! There will also be a photo opportunity available.

Thank you

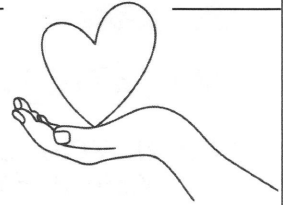


The Martin family is so thankful for the condolences and remembrances we received following the passing of Ted Martin. This time has been difficult for us, but your kind words of have given us comfort. It's wonderful to have friends like you surrounding us.

- Janice Martin

Thank you to all who continue to donate to Lydia House and Lutheran Social Services! Your contributions have made such a meaningful difference in the lives of those we serve.

- Eileen Crabbs



DO YOU LIKE THE CHIMES? THEN YOU'LL LOVE THE BETHANY BULLET! SIGN UP TODAY!

Scan here to sign up for the Bullet!



The Bethany Bullet is a weekly capsule of worship highlights and big information that your brain may or may not have 'downloaded' from the prior Sunday. The purpose is to bolster you in faith, build you up in the key Biblical themes shared the previous Sunday in worship, to bring to mind the important issues on Bethany's plate and to broaden your awareness of opportunities of service to your Lord, your church, and your community.

DO YOU HAVE A PRAYER REQUEST OR DESIRE INFORMATION ABOUT A MINISTRY, MEMBERSHIP, OR ONLINE GIVING?



WOULD YOU LIKE TO HEAR TODAY'S OR A PREVIOUS SERMON AGAIN?

You can hear them as podcasts at bethanylutheran.org



WANT TO SEE IT AGAIN?

Today's 9:30 am service will be live-streamed on our YouTube channel:

