

Fifth Sunday in Lent

April 6, 2025



Pastor's Corner for April 6-12, 2025

Pressing On Toward the Goal of the Heavenly Call (Philippians 3:8-14)

No matter how comfortable it may be at times to hold onto the past, God has a way of hurling us, kicking and screaming, out of the past and into a future we might never have imagined. Still... at times, our reputation precedes us. Ever heard the old saw about how many Lutherans it takes to change a light bulb? The answer is "three." "One to replace the bulb... and two others to talk about how much better the old lightbulb was!" Or this: How many Lutherans does it take to change a light bulb? "Change? What do you mean, change?!" Truth be told, we DO have a fondness for the past.

Fond memories can be comforting and reassuring when we are confronted with an uncertain future. Yet the Scriptures do not allow us to stay focused on the past... especially when it comes to past "accomplishments" and our standing in the world. The apostle Paul had learned that lesson and writes about it in our

Epistle text this weekend: "Once upon a time," he essentially says, "I had it made and knew all the right answers. Once upon a time I was prosperous, respected, and religious. But then Jesus came along and knocked me off my high horse. And now I've lost everything." This is not a metaphorical or philosophical statement. Paul has been arrested for his faith and calling. He is writing the letter to the Philippians, from prison. He knows what he is talking about.

But here's the point: Do present circumstances cause Paul to look back fondly on the past? Does he long for the way things used to be? Does he ponder the benefits of the "old light bulb"? Perhaps there were days when such a backward look would have been beguiling. But Paul shares this with his readers and listeners: "Forgetting what lies behind and straining forward to what lies ahead, I press on toward the goal for the prize of the heavenly call of God in Christ Jesus" (3:13-14). The old life of "success" in the eyes of the world was static. "I consider it all to be crap (or as the King James Version has it, "dung"), that I might gain Christ and be found in him, not having a righteousness of my own that comes from the law, but one that comes from Christ." Grasped as he is now by Christ, Paul is rescued from that static life of "success." He is flung instead into headlong motion on behalf of the kingdom of God. And because of Jesus, he doesn't look back.

My mother, in her later years, drove a large sedan of a car with the vanity plate "HEAVNWRD". Though we, her kids, smiled at the message that must have sent to drivers who witnessed firsthand her inattentive driving habits, she really did live by that upward call St. Paul talks about. That's what life looks like when every day is a reminder of Lent, yet we know Easter is just around the corner.

Let us then also press on toward the goal of our heavenly call today! Wherever we may be. Whatever we might be doing. By the grace of God, there is no going back.

Love in Christ,
Pastor Jonathan

Prayers of the Church



**Ethan and Denise Denault,
Avery, Harper**



Dave and Pam Duncklee



Ken and Jodi Fay



Chris Ghiold



Mark and Debbie Hammert



**Zak and Audrey Keller,
Ember, Avery**



**Robert and Sarah Lenzen,
Wesley**



Joe and Kathy Scandy



**Doug and Tara Tommas,
Kelley, Faith, Lauryn**



**Kyle and Katie Ward, Ronan,
Cullen**



Donnie and Ako Wilson

Not Pictured:

**James and Hannah
Bayless**

Jim Robie

**Pat Sellers,
Chrissa, Jessica, and
Tyler MacConnell**

Adult Christian Education Class

The Pastoral Epistles: Paul's Last Letters

Sundays, 9:30-10:30 am

Fellowship Hall

March 30-May 18

Led by Larry Cameron

The apostle Paul labored ceaselessly for thirty years to spread the Christian gospel. He established churches in Roman cities and provinces throughout the eastern Mediterranean regions. Realizing that his ministry was drawing to a close, he knew that he must assign qualified leaders to oversee these

congregations. Paul selected Timothy and Titus, two young men who had traveled and faithfully ministered with him.

In his last years, Paul wrote letters to these dedicated Christian workers to provide them with detailed instructions regarding pastoral oversight for the churches. He would identify the types of persons who would qualify for church leadership and establish their key responsibilities. He would also address the issue of gender roles in public worship, give repeated warnings to oppose false teaching, and affirm the absolute necessity of protecting and proclaiming the purity of the Bible's teachings.

These letters combine impassioned declarations and urgent commands along with warm and tender expressions of fatherly care. As we conduct an expository reading through these epistles, we will hear Paul's voice giving both instruction and encouragement to two of his most reliable assistants, men whom he addresses as his "true children."

Led by Larry Cameron. You will need to bring only your Bible to this study.

RLC Day of Service

(Operation Inasmuch)

Saturday, April 26 from 8:00 am-12:00 pm

Resurrection has participated for years in dedicated local service projects under the auspices of Operation Inasmuch. We will continue the tradition this year on **April 26, 2025**.

The RLC Day of Service is a way for us to put our faith into action and make a difference in the life of others. The event starts with breakfast prepared by the Men's Ministry and fellowship in the Family Life Center at 8:00 am. After breakfast, we will divide into our groups to complete our service projects. There

will be activities for all age groups.

The following are organizations that benefit from our help. Most groups stay at RLC to complete their project. A few groups will leave after breakfast to travel to another location to serve.

- Habitat for Humanity of Wake County
- Quilters and Sewers
- Knitters
- Camp Agape
- Prison Alliance
- Western Wake Crisis Ministry
- Families Together
- Cards for Missionaries, Church Members, and Friends
- Project Linus
- The Miracle League of the Triangle
- Landscaping on Church Grounds
- Designed for Joy

Look for the Temple Talk this weekend for more information, description of projects, and ways [to sign up!](#)



RLC Day of Service

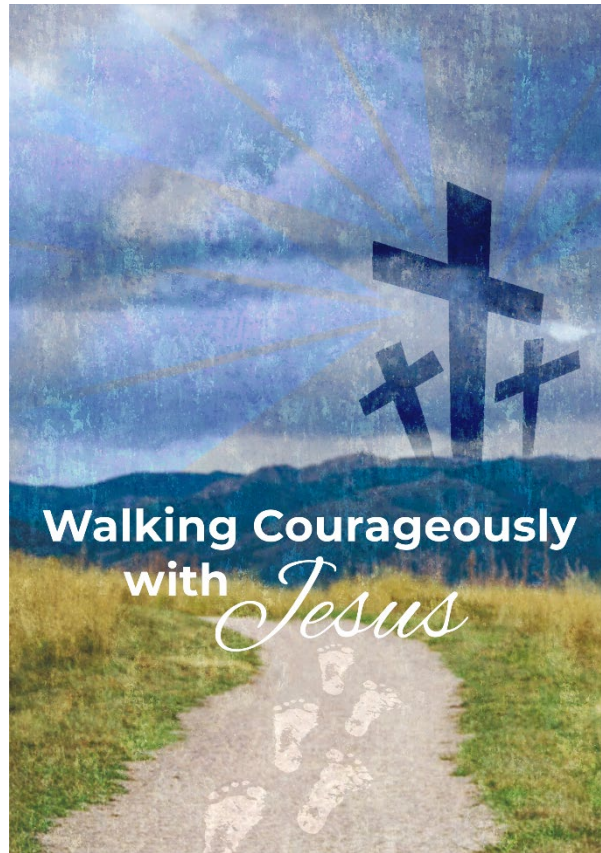
"...Truly I say to you, Inasmuch as you did to one of the least of these brethren you did it to me."

~ Matthew 25:40



Sign up for Altar Flowers in the Sanctuary and Family Life Center.
Click below or call the church office at 919-851-7248.
Flowers are from Cary Florist and cost \$45.

[Sign Up for Altar Flowers!](#)



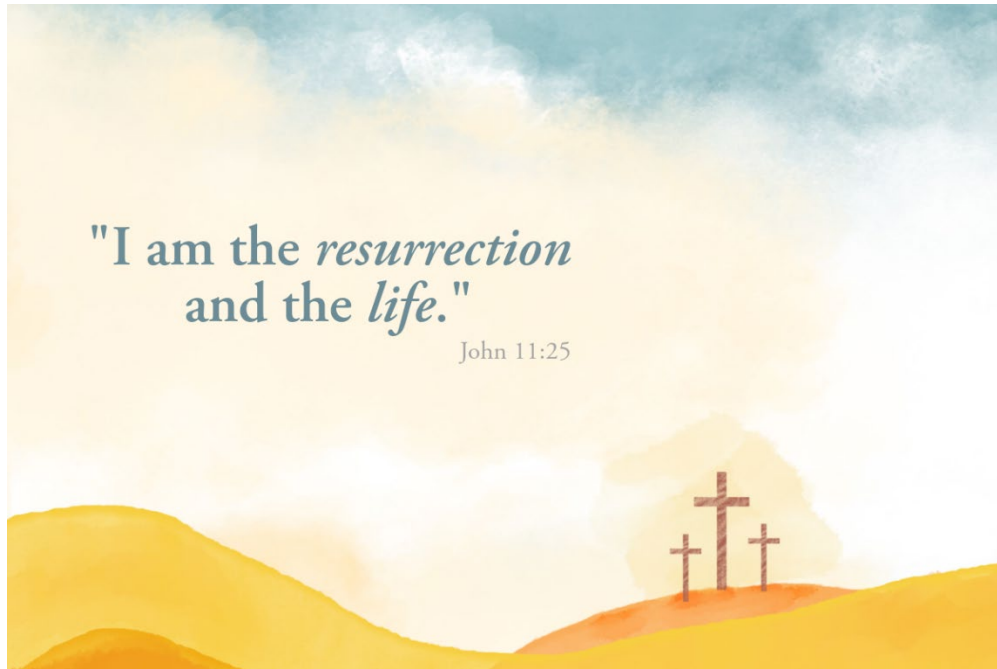
***It takes courage to fully approach Lent.
Jesus, help me walk in your steps.***

Join us
in the Family Life Center for
Interactive Lenten Worship Services!

**Wednesdays, 6:00 pm
March 12-April 9**

[View Worship Bulletin](#)

Families are encouraged to attend.
Dinner is available starting at 5:00 pm. [Sign up online.](#)
Note, adjusted schedule during Wednesdays in Lent.



Palm Sunday | April 12 & 13

6:00 pm ~ Sanctuary Worship with Holy Communion on Saturday

8:00, 9:30 am ~ Sanctuary Festival Worship with Holy Communion on Sunday
Led by Sanctuary Choir, Heavenly Handbells, and Brass Ensemble

11:00 am ~ Praise & Worship with Holy Communion on Sunday
Led by Reign! in the Family Life Center

Maundy Thursday | April 17

4:00 pm ~ Sanctuary Worship with Holy Communion

7:00 pm ~ Sanctuary Worship with Holy Communion
First Communion for 5th Grade Students

Good Friday | April 18

12:00 pm ~ Sanctuary Worship

Preceded and Followed by a Soup and Salad Lunch

Musical Offerings by Cantus Christe Quartet

7:00 pm ~ Tenebrae Service in the Sanctuary, Featuring *The Messiah, Part II*

Led by Sanctuary Choir

Easter Sunday | April 20

6:30 am ~ Sunrise Service Begins in Prayer Garden

Processes to Sanctuary, Led by Celebration Singers

8:00, 9:30, 11:00 am ~

Sanctuary Easter Festival Worship with Holy Communion

Music Led by Sanctuary Choir, Heavenly Handbells, and Resurrection Brass Ensemble

11:00 am ~ Praise & Worship with Holy Communion

Led by Reign! in the Family Life Center

Special Event with Author Pam Beck

Thursday, April 10

Our widows' group, Following Naomi, is hosting a special guest on **Thursday, April 10** from 2:00-4:00 pm in the Fellowship Hall with author Pam Beck titled, *Biblical Flowers and Herbs*. All are invited and feel free to bring a friend!



Pam Beck co-authored the 2006 book, "Best Garden Plants for North Carolina." She has published many articles in the Carolina Gardener magazine and wrote a monthly gardening column for the Raleigh News & Observer for a number of years. Her nature and garden photography appear in various gardening magazines and books.

If you are a widower, consider joining Following Naomi on the second Thursday of the month from 2:00-4:00 pm in Room 151, Family Life Center.

Questions can be directed to the church office at office@rlcary.org or 919-851-7248.

Weekly Bible Study Opportunities

SUNDAY

The Pastoral Epistles: Paul's Last Letters

Sundays, 9:30-10:30 am

Fellowship Hall

March 30-May 18

Larry Cameron

MONDAY

Monday Night Women's Bible Study

Meant for Good by Donna Snow

Mondays, 7:00-8:00 pm

Room 151, Family Life Center, and Online via Zoom

January 6-May 19

Jamee Thieme, Sharon Hahne, Dawn Leister

Men's Weekly Study and Fellowship

The Intersection of Church & State

Mondays, 7:00-8:15 pm

Room 240, Family Life Center

March 31-April 28

Tom Gebbia

TUESDAY

Tuesday Morning Bible Study and Fellowship

Tuesdays, 10:30-11:30 am

Fellowship Hall

Ongoing

Pastor Jonathan Blanke, Pastor Zach Sarrault, Pastor Alan Shaw

WEDNESDAY

No Intentional Parenting

Wednesdays, 6:00-7:00 pm

Room 240, Family Life Center

January 8-April 30 (***Not Meeting During Lent***)

Pastor Zach Sarrault, Erika Hulse

Men with Kids

Jesus's Farewell Message by Francis Chan

Wednesdays, 7:00-8:00 pm

Room 247, Family Life Center

March 26-April 30

Group Led, Tom Gebbia

Do you know Jesus? In this series, Francis Chan dives into John 13-17, a passage rich in promises, commands, and eternal truths. He'll remind us we aren't called to a part-time faith — we were made to know, walk with, and commune with God.

Assertiveness with Pastor Alan Shaw and Sue Campau

Wednesdays, 7:00-8:00 pm

Room 151, Family Life Center

March 26-April 30

Do you struggle to communicate your needs, set boundaries, or speak up with confidence? Join Pastor Alan and Sue Campau for an Assertiveness class designed to help you develop the skills to communicate more effectively, stand firm in your beliefs, and approach challenging situations with grace and strength. This class will provide practical tools and Biblical principles to guide you in becoming more assertive in your life. Through interactive teaching and group discussion, you'll learn how to build confidence, speak with clarity, and honor both yourself and others in your interactions.

Look for detailed class offerings [on our website](#).

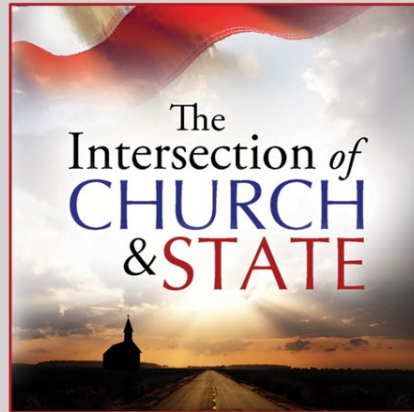
Any questions can be directed to the church office at office@rlcary.org or 919-851-7248.

Service Opportunity

Are you interested in serving recent immigrants to our community as a volunteer ESL teacher?

Please reach out to the Cross Cultural Mission Engagement Team (CCMET) at ccmet@rlcary.org to let us know.

Adult Christian Education Class



Men's Weekly Study and Fellowship

Mondays, 7:00-8:15 pm
Room 240, Family Life Center

March 31-April 28

Led by Tom Gebbia

Intersection of Church & State by Rev. Gregory Seltz

In the United States, the relationship between church and state is an energetic one. Voices and viewpoints line up across the spectrum. Some would argue from history there should be a "wall of separation" between the two. Others maintain co-existence is not only necessary and inevitable but can lead to positive results.

In real life, church and state do operate in similar spheres - both conflictually and cooperatively. See how they interconnect in *The Intersection of Church & State*.

While some may propose a church and state separation is feasible, breaking this long-standing liaison is not likely. Though each entity has its separate function- the state to "promote the general welfare" of its citizens, the church to deal with spiritual concerns in this world, with an eye to the next-in reality they work together.

The Intersection of Church & State examines the dynamic give-and-take relationship that has marked the crossroads of church and state in this country.

Though roadblocks are frequent where the two meet, there is still tremendous potential for cooperative work to be done. Using expert commentary from academics, church and civic leaders, agency professionals and others, this program underscores the healthy collaboration between church and state in caring for the needy, settling refugees, child adoption, chaplain services, and more. It will also consider how these historical church and state partnerships are jeopardized. In the end, it will suggest a far superior metaphor in describing the church-state relationship is not one using a wall or barrier but, instead, an intersection, which benefits us all.

Contact Tom Gebbia at mens-ministry@rlcary.org.

Supper & Scripture	
Wednesday Evening Activities <i>Lent</i> Schedule	
5:00-5:20 pm Jubilee Bells, Sanctuary	7:00-8:00 pm Adult Christian Ed <i>Assertiveness</i> , RM 151 <i>Men with Kids</i> , RM 247
5:00-5:45 pm Dinner, Gym	7:00-8:00 pm Heavenly Handbells, Sanctuary
5:20-5:40 pm Rainbow Choir, Sanctuary Sonshine Singers, Choir Room	7:00-8:00 pm Confirmation, RM 240
6:00-6:45 pm <i>Lenten Midweek Worship, Gym</i>	8:00-9:15 pm Sanctuary Choir, Sanctuary

Wednesday Evening Dinner

Join us for Wednesday evening dinners during Lent on **Wednesdays, 5:00-5:45 pm** in the Family Life Center Gym. All are welcome!

April Menus:

April 9 - Tacos, Fruit, and Tres Leche Cake

April 16 - No Dinner, Holy Week

April 23 - General Tso, Chicken Lo Mein, Salad, Fruit, and Ice Cream with Fortune Cookies

April 30 - Burgers and Dogs, Mac 'n Cheese, Salad, Fruit, and Brownies

Suggested donation of \$7 per person or \$25 maximum per family. Cash, check, or card payable at door. Please RSVP through rlcary.org or to the church office by Monday Noon.

We all have busy schedules and being able to have a family sit down dinner is always a blessing. Please join us!



Questions? Contact Kim Simpson through RCB or the church office (919-851-7248, office@rlcary.org).

Lenten Offerings

Offerings received during the Lenten Midweek Worship Services this year will go to support two entities: Manna Food Bank and Inter-faith Food Shuttle.

Please place your offerings in the specially marked offering envelopes or denote "Lenten Offerings" on your check. Thank you for your generosity in supporting these important charities and ministries.

Manna Food Bank

Manna Foodbank is located in Asheville, NC. Founded in 1982, Manna Foodbank is a private, not-for-profit service organization working to end food insecurity in the 16 counties of Western NC, including the Qualla Boundary. This group was hit hard by Hurricane Helene losing their warehouse and all the food stored there. Our donation will go a long way to help them rebuild and feed our friends impacted by the storm.

mannafoodbank.org

Inter-Faith Food Shuttle

Inter-Faith Food Shuttle states their mission is "To feed our neighbors, teach self-sufficiency, and grow healthy foods by cultivating innovative approaches to end hunger." They provide shelf stable food through their pantry, have onsite gardens and administer the Back Pack Buddies program which sends food home with food insecure school children on the weekends.

foodshuttle.org/feed



Come for a walk or jog with us every Friday during Lent! Meet in the RLC lower parking lot for your choice of either a 2-mile walk or a 4-mile jog, both departing promptly at 7:00 am.

Weekly Bible verses are provided for discussion on the walk or jog. [Click here to sign up](#) (not required but recommended).

Presented by the RLC Stewardship of Life & Health. We hope to see you there!

Contact Art Berger or Anthony Johnson through RCB, or the church office (919-851-7248, office@rlcary.org).

The Next Coffeehouse for Special Needs Adults

Friday, April 11

We thank all our volunteers who help us to have wonderful Coffeehouses! We couldn't do it without our faithful volunteers. Please join us! Our special needs guests love to attend these events, and we need lots of volunteers to make them feel special and loved. We thank God for this ministry among us!

We need Setter Uppers at 5:30 pm (both food and room), Servers at 6:30 pm, and Cleaner Uppers at 8:30 pm. Sign Up: bit.ly/3VAtWW0



The next Coffeehouse is **Friday, April 11** from 7 - 8:30 pm in the Family Life Center gym. ***The Possibilities Choir*** will sing for us!

Contact Brenda Peterson through RCB, or the church office (919-851-7248, office@rlcary.org).



**Calling all LCMS College Students
and Graduating High School Seniors!**

You are invited to come and howl with the "Lutheran Pack" one last time for the 2025 Spring semester on **Friday, April 11** from 7:00-8:30 pm at the NC State Study Center (201 Brooks Avenue, Raleigh). We will have fellowship and food before we close with "Evening Prayer" and Holy Communion. Pastor Alan Shaw from Resurrection will be providing the pastoral services for us.

As for all our meetings, we are open to college students at NC State, UNC, Duke, surrounding local colleges, as well as those studying from home. However, for this meeting we are welcoming and encouraging any graduating High School Senior to attend. Whether you are coming to NC State or another local college in the fall and want to get connected with fellow students before the fall, or will be attending a college out of state but want to learn what LCMSU is like and spend time in fellowship and worship with other students, we would love to have you.

If you have any questions or would like to RSVP in order to help with an accurate headcount, please email Pastor Alan Shaw at alan.shaw@rlcary.org.

Children's Choirs

The Resurrection Lutheran School Choirs and the Sonshine Singers and Rainbow Choir from RLC are invited to sing at the 8:00 am and 9:30 am Worship Services on **Palm Sunday, April 13** in the Sanctuary.



Please meet in the Fellowship Hall at 7:45 am and 9:15 am, respectively. Choir members will process/sing at the beginning of the service, then will be excused to sit with their families. Semi-formal attire appreciated.

Questions? Contact Bob Unger or the church office (office@rlcary.org, 919-851-7248).

Resurrection Lutheran Church Easter Eggstravaganza

Sunday, April 13
3 pm

Petting zoo, egg hunts, prizes
and more!



Prayer Cards

Visual Faith® Ministry has provided prayer cards by the prayer sheets in the Narthex and the Family Life Center.

We invite you to take a few cards home and add prayer notes for your family and friends for whom you are praying.

As you pray for those concerns, color the card, and then send it to the person with a note that says, "You've been in my prayers this week."

If you have questions, please contact Jamee Thieme through RCB.

RLC Worship Servants and Training

There is always a need for more volunteers to assist in all of our worship services. Please consider being a greeter or usher, a worship assistant or lay reader, a slide tech or live stream team member. Feel free to reach out directly to the following for more information:

- Saturday, 6:00 pm - Lori Jannings
- Sunday, 8:00 am - Brenda Peterson
- Sunday, 9:30 am - Dara Linn
- Sunday, 11:00 am - Suzi Heffner

You may also contact the church office at 919-851-7248 or office@rlcary.org for assistance.

April Children and Family Ministry News

Easter Eggstravaganza

Join the fun Sunday, April 13th at 3 pm! There will be a petting zoo, egg hunts, games and activities. Bring a basket/bag for collecting eggs. Invite a friend!

VBS Volunteers

There will be 2 identical volunteer meetings! You pick one!
Thursday, June 5 at 7 pm in the FLC room 151 -OR- Sunday, June 8 at noon in the FLC room 151.
We are in need of volunteers & would love to have you join the True North VBS team!!

Children's Sunday School

Sundays 9:30-10:30 in the Family Life Center.
No Sunday School April 20 - Happy Easter Sunday!



Vacation Bible School
registration for
participants &
volunteers! 





DONATIONS

FOR THE EASTER
EGGSTRAVAGANZA

The Children and Family Ministry Team is accepting donations of unfilled plastic Easter Eggs and individually wrapped candy. Items may be dropped off in the church office before April 9th!

Thank you 





Questions? Contact Erika Hulse, Children and Family Ministry Director,
at erika.hulse@rlcary.org or 919-851-7248, ext. 62.

Youth Ministry

Middle School and High School

This year is flying by! I hope you have been enjoying this Lenten season. With Easter just on the horizon and several service events coming up, please watch the schedule and take note of meeting days and times. I will also be keeping schedule changes up to date on GroupMe and Instagram.

Calendar

Sunday, April 6

Sunday School, 9:30-10:30 am

High School Youth Group, 5:00-6:30 pm

Wednesday, April 9

No Middle School Youth Group during Lent.

Join us for Lenten Midweek Worship at 6:00 pm in the Family Life Center!

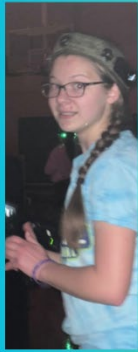
Service Projects for All Youth:

Sunday, April 13 - Easter Eggstravaganza

Saturday, April 26 - RLC Day of Service (Operation Inasmuch)







53 Youth
attended our Youth
Late Night with
Laser Tag!





Questions? Contact Ms. Jenny, Youth Director
jenny.piontek@rlcary.org or 919-851-7248, ext. 24.

Resurrection Lutheran Preschool

Enrollment for 2025-26

at Resurrection Lutheran
PRESCHOOL

Our program provides a balance of
academic and social opportunities by
'learning through play'
in a loving Christian atmosphere.

+ Classes for children 2-years-old
thru 5-years-old +



Resurrection Lutheran Preschool

**3-year-olds
to Rising kindergarteners**
(children currently in our 2's classes can come!)
(ALL Ages **MUST** be toilet-trained)

June 2 - 5 (9:15-12:30)

June 9 - 12 (9:15-12:30)

June 16 - 19 (9:15-12:30)

RLChurch VBS June 23-27

Neighbors, friends, & family welcome!

E-mail for brochure & Registration forms

REGISTER NOW!

rlpcary.org | 919-851-7270 | office@rlpcary.org

Resurrection Lutheran School

First Grade had a visit from Dr. Nate Nicholes!



rlscary.org

Junior Kindergarten-8th Grade

rlscary.org | 919-851-7271 | contact@rlscary.org

Latest Lion's Tale



For online services, connect through our YouTube channel at
youtube.com/ResurrectionLutheranChurchCaryNC
or through our website at
rlcary.org/about-us/online-worship.

This Week's Visual Faith Sheet

Weekly Attendance

In-Person Worship Attendance

Saturday, March 29
6:00 pm - 72

Sunday, March 30

8:00 am - 67

9:30 am - 131

11:00 am - 93

Lenten Midweek, April 2

6:00 pm - 79

Total In-Person Worship: 442

Views of Online Worship at RLC's YouTube Channel

Sunday, March 30

8:00 am - 93

11:00 am - 73

Lenten Midweek, April 2

6:00 pm - 28

Total Online Views: 194

Financial Update - Fiscal 2024/25

February 2025

Budgeted Giving to Date: \$1,000,500.00

Actual Giving to Date: \$944,319.00

Current Over/(Under) Giving: \$(56,181.00)

Budgeted Expenses to Date: \$966,667.00

Actual Expenses to Date: \$948,755.00

Current Under/(Over) Spend: \$17,912.00

Questions? Contact finance@rlcary.org.

Church Calendar



100 Lochmere Drive West, Cary NC 27518

rlcary.org

919-851-7248 | office@rlcary.org

Prayers of the Church – April 6, 2025

*Let us then approach God's throne of grace with confidence,
so that we may receive mercy and find grace to help us in our time of need.
Hebrews 4:16*

We lift the following prayer requests this week:

Ongoing Prayers

*Diane Cuper, *Anne Altieri, *Charlotte Raines, *Eric Hammergren, *Anita Moore, *John Shaeffer,
*Vern Ebert, *Aaron, Marcus, Malcolm, *Sandy Douglas, Henry Otten, Michael Flannery,
*Helen Campbell, Paul Batt, *Geoffrey Wiggins, Caitlyn, Mark Zimmerman, Justus Nicolai,
Alex Fernandez, Cheri Spitz

Ongoing Cancer Treatments

*Mike Allen, Anne Price, Angie Price, Alison Zieglmeier, Carol Diliberto, Jackie, Kathy Siemon,
Scott Brinkley, Jimmy Ketner, Hope Mackelprang, Melissa Huntsman, Sue, Kathy, Pamm Haley, Bob,
Michael Murphy, *Greta Nelson, *Marina de Moura Torres, Paul Wozniak, Ames, Doug Gill, Emily,
*Alison Whatley, Joe Huley

For Expectant Moms

*Janet Lucien, *Kelsey Sarrault, *Lauren Unger, *Erika Lonseth, *Melody Gerdes, *Christina Benson

Those Prayed for on March 30, 2025

Thanking God Today

- Our RLC Family
- Family Celebrations and Time Together, Anniversaries, Birthdays, Weddings, Births, Baptisms
- Our Many Blessings
- Safe Travels
- Caring Organizations Serving Our Local Communities
- Lenten Services
- Richard Staley, Recovery at Home
- Home Sales and Closings

For Healing

- *Kim Goss
- All Those Exposed to COVID, with COVID, and Recovering from COVID
- Blind Ministry Guests - Maria and Jeff Barker, Linda Jones, Judy Dean, Ruby Franklin,
Miriam Delgado, Betty Oglesby, Helen Rice-Lyles, Nancy Waggoner, Debbie Guice
- *Greta Nelson
- Pastor William Otto, Cancer Treatment and Surgery

- *Pam Dickson
- *Stephanie Ford
- Betty, Memory Issues
- *Vern Ebert
- *Mindy Stephani, Recovery
- Doug Gill, Ongoing Cancer Treatment
- *Helen Campbell
- Terrie Johnson, Mother of *Jen Kirby
- *Alison Whatley
- Bryon, Recovery
- Marion Cecconi, Mother of *Lecia Roberts
- Ingrid, Rehab
- Martha, Sister of *Charlotte Raines
- Carrie Heilman, Cancer Treatment, Daughter-In-Law of *John and *Virginia Heilman
- Dave, Brother-In-Law of *Susan Brandt
- *Paul Brandt's Father in Rehab with Multiple Issues
- Clare Roberts, Cancer Treatment, Mother of *Michelle Wood
- *Alan Sullivan
- *Charlie Shiel
- Nicholas Franklin, Recovery from Surgery
- Garrett Durnbaugh
- Rhianna, Healthy Pregnancy
- Kathy Siemon
- *Kathy Rihani
- Debbie, Sister of *Lynne Hoffman
- Preston, Recovery from Surgery
- James, Joanne, Doug, Paul, Alan, Brian, Anne, Richard, Rosemary, Mike, Kathy, Gerry, Noreen, Sylvia, Donna, Shelby, Joann, Ken, Harold, Susan, Kelly, Mark, Marylyn, Caroline, Shim, Carrie, Virginia, Joe, Debbie, Dave, Glen

For Comfort

- Family and Friends of Shirley Kraus, Aunt of *Denise Fritter
- Family and Friends of Grace Yunker, Wife of Pastor Art Yunker

For Provision, Peace, Strength, and Patient Endurance

- Persecuted Christians
- People Around the World Affected by Natural Disasters and Weather Events, Especially People of Western NC, SC
- Families and Businesses Recovering in Western NC
- Mountainside Lutheran Church and Camp Linn Haven
- Safety and Thanksgiving for People Helping with Recovery Efforts
- People of Ukraine, and All Those Who Serve to Support Them
- People of Israel and People of Gaza, Peace in the Middle East
- All Those Supporting Family Members with Caregiving Needs
- Safe Travels
- Annie Ruth Ford, Mother of *Dennis Ford

- *Eric and *Jill Hammergren
- *Jan and Paul Wozniak, and Their Family
- Jan and Rich Bloom
- *Ginny and *Ed Koren
- *Meredith A.
- *Fran Xenakis
- *Ron and *Carol Mitchell
- Those Enduring Marriage Struggles and Families in Turmoil
- Those Seeking Jobs and Career Changes, and Federal Workers
- Victims, Families, and Communities Suffering with Gun Violence
- Wayne and Dorothy Conners, and Their Family
- *Jim and *Thelma Rhodes
- *Anita Moore and Family
- Richard and Rosemary Staley
- Sale of Homes/Properties
- Our Government and Leaders
- Renee, Guidance and Direction
- Earthquake Victims in Myanmar and Thailand

For the Lord's Wisdom, Guidance, Strength for the Health and Well-Being of the People They Serve

- Pastor Jonathan and Juli, Associate Pastor Zach and Kelsey, Assistant Pastor Alan and Faith, and Their Families
- Pastor Jon Richter, Serving St. Paul's Lutheran Church, Norlina NC, and Ellen
- Chris Reed, SMP Training and Vicarage
- Resurrection Lutheran Church and Schools Staff
- Area Pastors and Schools Staff
- Our Stephen Ministers
- Our Ministry of Presence

For Ongoing Mission and Outreach Efforts

- Missionaries to the Dominican Republic, Stan and Dana Stigdon
- RLC's The Coffeehouse
- RLC's Blind Ministry
- Sleep in Heavenly Peace
- Safe Families for Children
- Families Together/PLM
- Camp Agape Ministries
- Read-a-Book at Reedy Creek Elementary School and Our RLC Volunteers
- Orphan Grain Train
- *Ilea Kuo, Southeast Asia Mission Trip

For Our Missionaries

- JP and Aimee Cima, Cambodia
[Click here for the Cima Family Newsletter!](#)
- Shauen and Krista Trump, Kenya

*Lord Jesus, thank You for Your abiding Presence and saving grace. All is in Your Hands.
We trust You are working all things according to Your good plan and purposes,
and with that trust and confidence, we release these prayers to You. In Your Holy Name, Amen.*

***RLC Members**

Updated 4/4/25