



SAINT ANTHONY of PADUA

Catholic Community

SUNDAY MASS

12:30pm

5649 Mount Gilead Road
Centreville, VA

Also streamed live on Facebook

YOUTH FAITH FORMATION

1st Sunday of Each Month

class is held during the 12:30pm mass and supplemental materials are made available on the parish website.

FELLOWSHIP SUNDAY

Last Sunday of Each Month

contact a member of the hospitality team if you'd like to bring a treat to share!

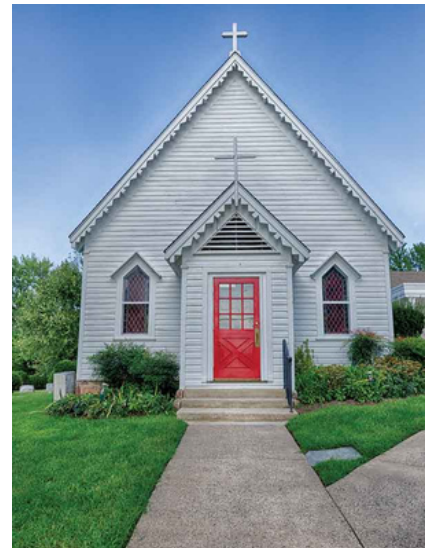
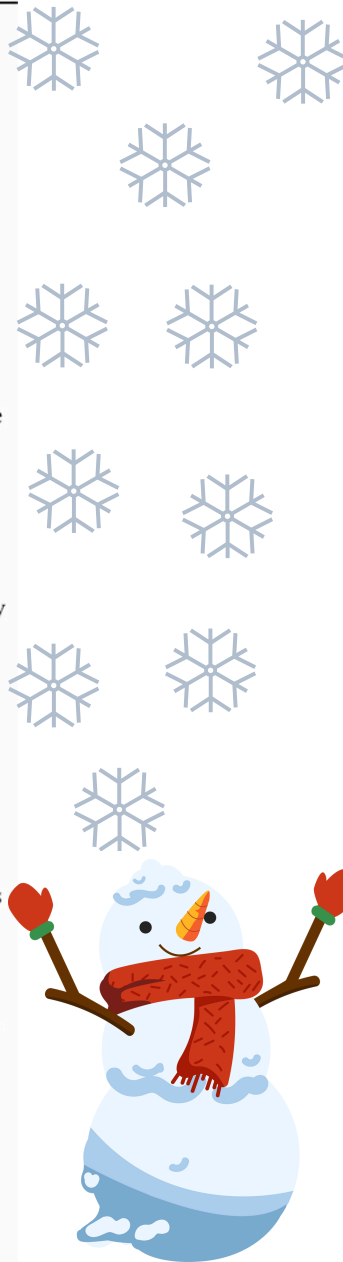
Direction of the Cross

WHEN A minister carries a Cross in procession at the beginning of the Mass, it customarily faces forward. The *Ceremonial of Bishops* explicitly calls for this when the bishop celebrates Mass at the cathedral. Among those who precede him in the procession is “an acolyte caring the Cross, with the image to the front” (128). By extension, the same practice is carried out in other celebrations of the Mass.

In the past, an archbishop entered the church behind a special metropolitan Cross with the image of Christ facing him, but this practice was discontinued after the Second Vatican Council.

Christ leads us every step of our lives. Upon entering the church, he leads the way for all who have gathered. As the Cross enters the main aisle, the Gathering Song opens the Mass, fosters the unity of the participants, directs their thoughts to the feast or season, and accompanies the procession (*General Instruction of the Roman Missal*, 48). It is Christ who makes us one, Christ who rules all time, and Christ who guides our steps. This procession moves toward the altar, the place of sacrifice and Communion. There we will all join with Christ, whose sacrifice expressed his love for the Father and for us. Behind him, we too express our readiness to sacrifice for others as a sign of our love for the Body of Christ.

The minister who holds the Processional Cross should be strong enough to hold the image upright. Upon reaching the sanctuary, the minister bows only the head—not from the waist. This will keep the Cross straight. If there is no other crucifix in the sanctuary, the Processional Cross remains in the sanctuary near the altar throughout the Mass. If there is one, the Processional Cross is set to the side in a dignified place, usually in the sacristy.



YOUR PASTORAL TEAM

Fr. Julian, Fr. Jason, and Fr. David are honored to walk with you on your journey of faith and to support your spiritual needs.

MOST NEEDED ITEMS FOR WFCM**Food & Beverages**

- Flour
- Sugar (1 or 2 lb. bags)
- Vegetable Oil
- Pasta Sauce
- Pasta
- Cereal (low sugar preferred)
- Pancake Mix
- Family Sized Snacks (pretzels, crackers, etc.)
- Canned Chicken

MONTHLY FOOD COLLECTION

As part of our outreach to support individuals and families in need, we have committed to collection food items throughout the month for Western Fairfax Christian Ministries (WFCM). This outreach helps us reach a far wider community of those in need as we pool together our collections and resources with other faith communities in our region. You can find the most needed items in the parish bulletin. Donations will be collected the last Sunday of each month. A special thank you to Lourdes who has volunteered to be the drop-off ambassador for the parish with all of our donated items from the month. Gracias, Lourdes!

INCLEMENT WEATHER

In the event of severe weather that could affect mass, updates will be posted on the parish Facebook page and website. Should there be an unexpected occurrence of extreme weather leading to the cancellation of in-person mass, we will do our best to livestream the mass from one of our priests' homes. It will be our goal to make cancellation notices the evening before if possible.

FAITH FORMATION

Please note that there will be **no** Youth Faith Formation classes during January in observance of Winter Break. Classes will resume on **Sunday, February 2nd**. We are looking forward to seeing you then!

AND ALSO WITH YOU!

On the first Sunday of Advent 2011, English-speaking Catholics began using a new, more literal translation of the Mass. Anyone who has visited our parish knows we at St. A's did not adopt this change. The liturgy is meant to draw people closer to God and Vatican II invited all to fully participate in the sacramental life of the Church. This participation is made difficult when words English-speaking Catholics will not pray orally—or sing settings to the Gloria and the Sanctus—without the awkwardness that unfamiliarity the new translation breeds. Some say the translation was a giant step backwards. Words like, "ineffable," "ignominy," "shall," "wrought" and "thwart" might be technically correct, but does anyone really pray that way? To be in authentic relationship with our God we need to be who we are and pray as we speak. At least we'll know what we are saying and praying!



Talk To Us...

703-665-9730 - Parish Cell

Fr. Jason Lody, FCM
jlody@mysaintanthonys.org

Fr. Julian Garcia
jgarcia@mysaintanthonys.org

Facebook & Instagram
@MySaintAnthonys