



T L C H O P E C E N T E R



HOPE CENTER

Twin Lakes Church is open all week long, bringing hope to the hopeless in the name of Jesus.

We proclaim the gospel.

We feed the hungry.

We comfort the grieving.

We help break the chains of addiction.

Best of all, people are meeting the source of all hope: Jesus Christ. We hear stories like this again and again:

"The Beloved women's recovery group not only saved my life but my unborn son's. I was scared, broken and lost. Today, I have a second chance at living a new life in Christ. The chains of my addiction have been broken..."

One problem: Our portable buildings, where many of these ministries happen, are decaying. Roofs leak. Floors sag. One had to be removed already. The clock is ticking on the rest.

That's why we hope to build a new facility to give these ministries a permanent home:

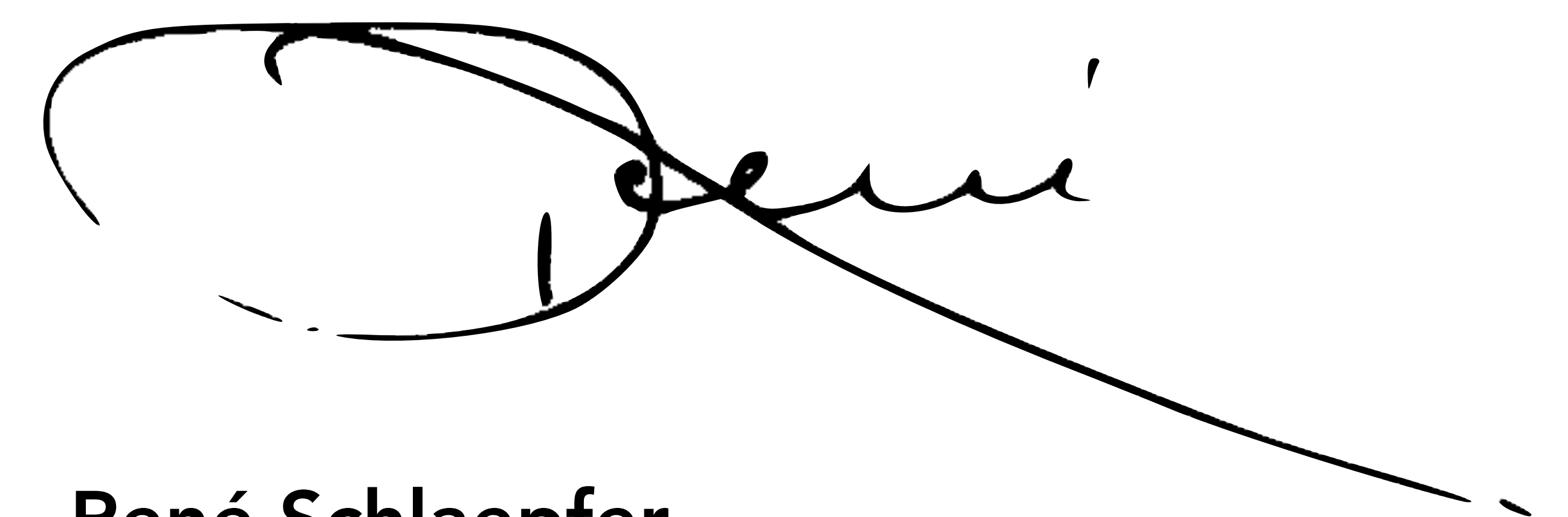
The TLC Hope Center.

God commands us: "Feed the hungry and help those in trouble." (Isaiah 58:7)
This is a building **specifically designed** to get that done..

On **Palm Sunday, March 23 and 24**, we'll bring in our 4-year pledges. Two weekends later, we reveal the total!

Details are in the pages that follow.
Thank you for prayerfully reading!

With love and appreciation,



René Schlaepfer
Senior Pastor
Twin Lakes Church

HOW WE OFFER HOPE

PROVIDING FOOD



Our People's Pantry feeds

480

people per week

The Pantry helped

7,581

households in 2023

I was hungry, and you gave me something to eat.

Matthew 25:35



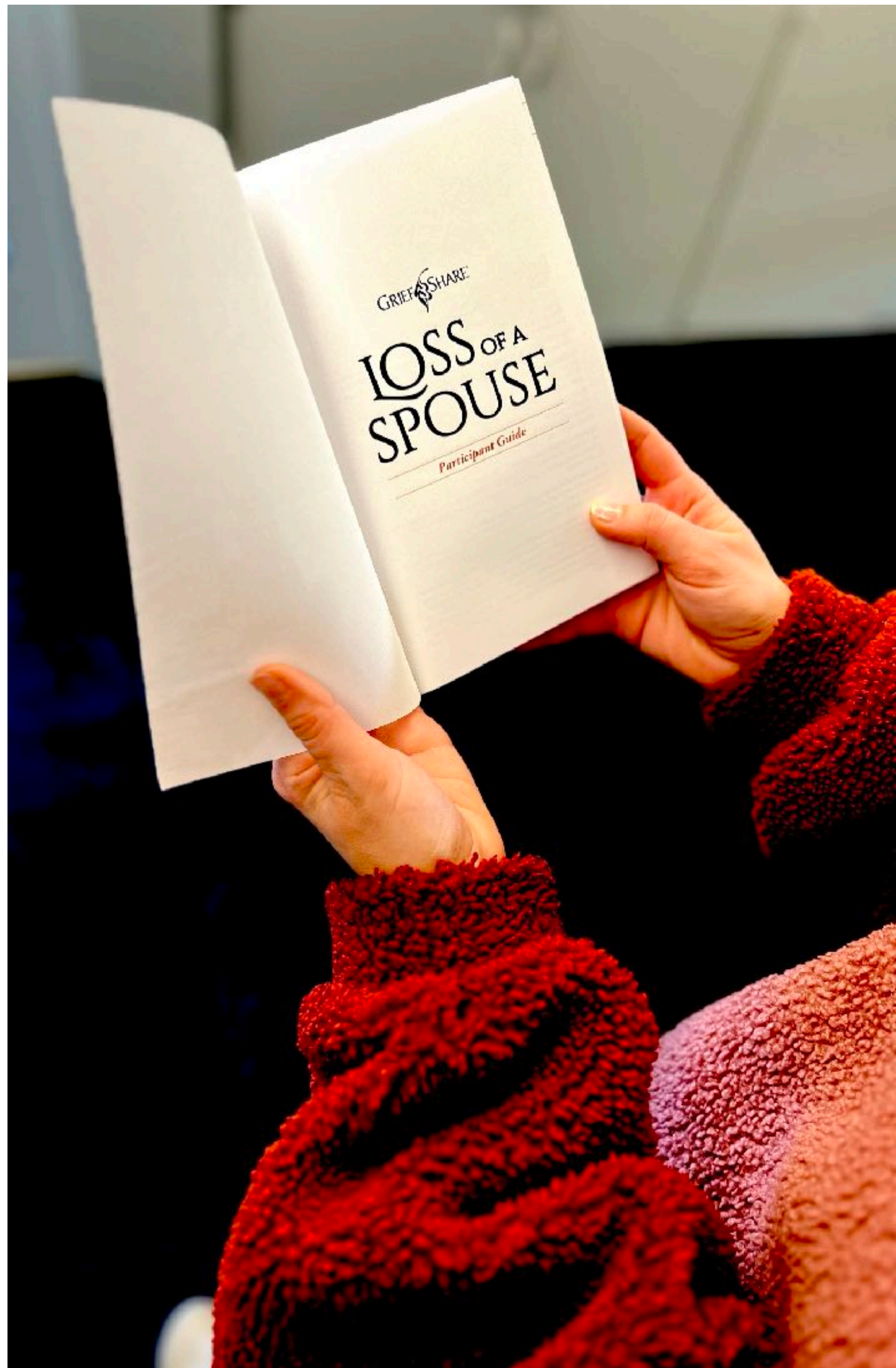
We have been serving at TLC for many years.
Many people who receive food depend on People's Pantry for their families. We are moved with compassion when we witness firsthand the impact our team is making in people's lives.

— **Julia & Richard**

PEOPLE'S PANTRY VOLUNTEERS



hope



HOW WE OFFER HOPE

MENTAL HEALTH CARE

Our support groups offer safe places to find comfort and healing. There are groups for **grief, divorce, cancer, mental health, caregivers, and more.**

Carry each other's burdens... **Galatians 6:2**



I never understood deep grief until I lost my wife to breast cancer. I wanted to suppress my pain, but I knew I needed to lean into it. **God used TLC GriefShare to bring hope and healing.** I want others to know: You're not alone in this. GriefShare is a place to find freedom and, most of all, other people who know what you're dealing with and can help.

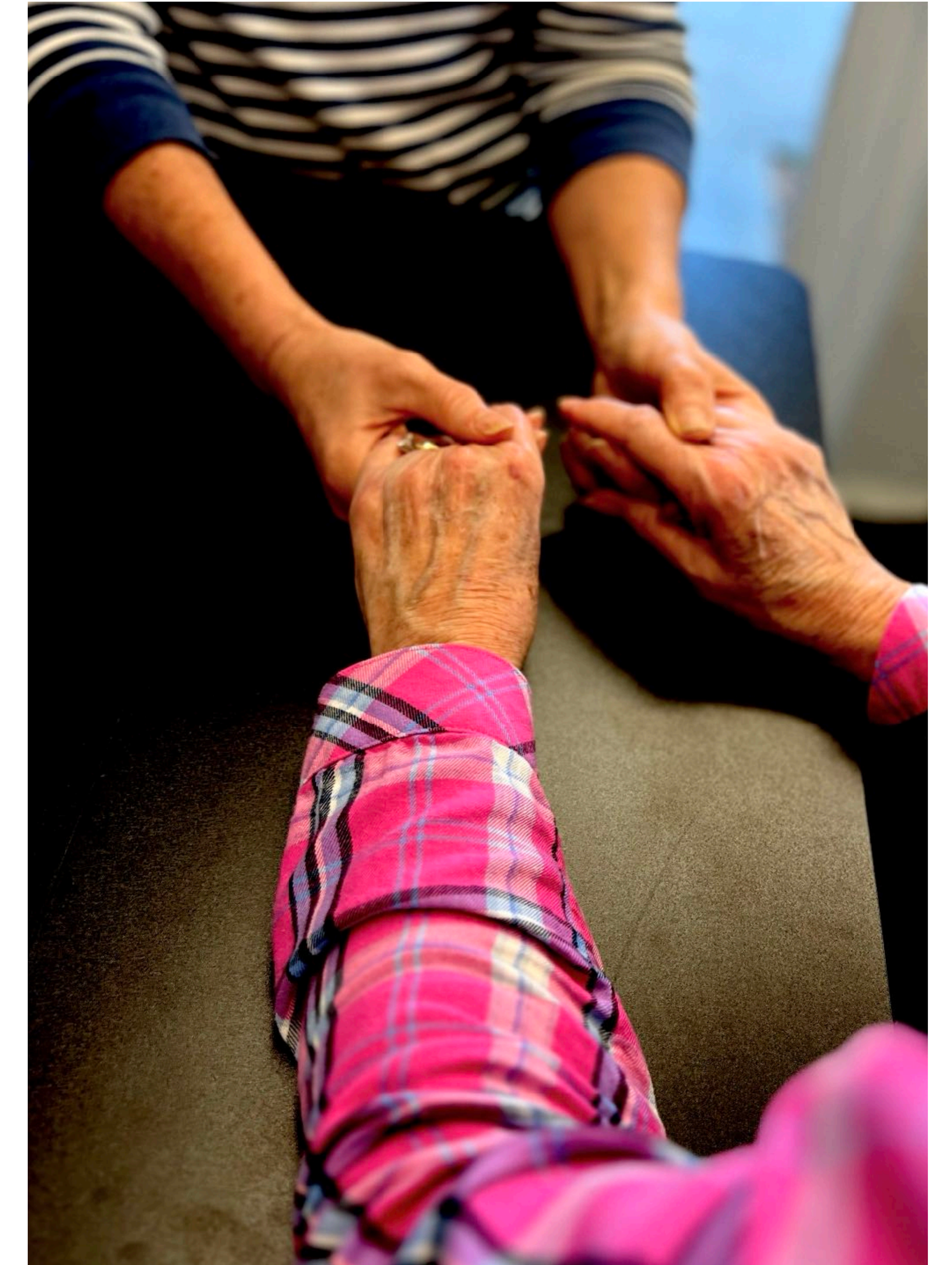
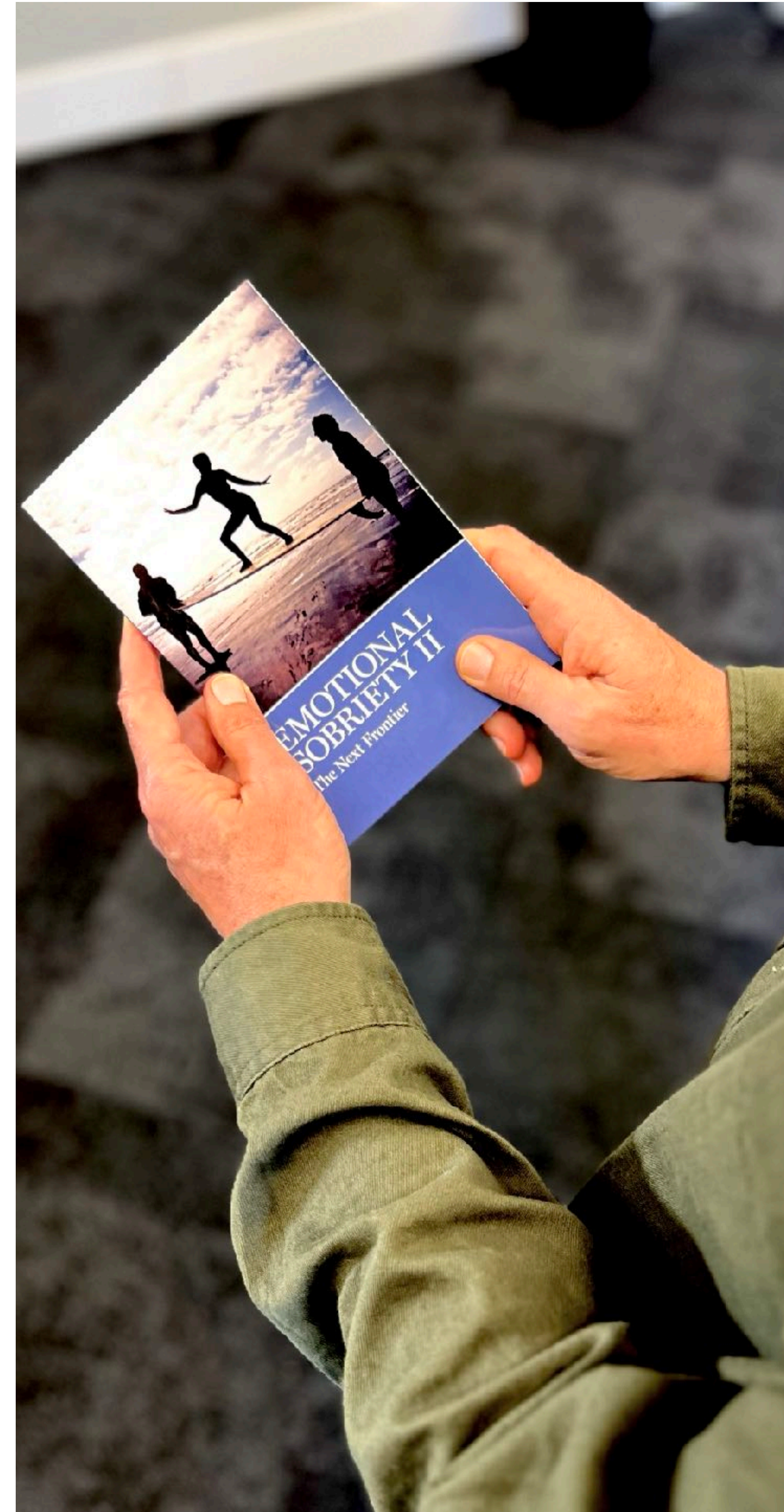
— **Bob**

GRIEFSHARE

HOW WE OFFER HOPE

RECOVERY

We offer 12-step, faith-based, recovery groups throughout the week. We welcome all who need help with substance abuse, alcohol (AA), drugs (NA), codependency (Al-Anon), sex addiction, pornography, anger management, and other addiction issues.



Remove the chains that bind people.. **Isaiah 58:6**



Around three years ago, I **joined the Monday night recovery group**, and two years later, I started actively contributing to the women's recovery ministry. These ministries have not only **transformed my life** but have also had a positive impact on many others.

— Paula

RECOVERY

hope

HOW WE OFFER HOPE

DISCIPLESHIP

As people serve and learn together in our Bible studies, Sunday School classes, midweek electives, and more, they grow in Christ.



Let the word of Christ dwell in you richly...

Colossians 3:16



I've been filling bags for hungry people in our community almost every Wednesday for over two years. Gradually, **I wanted to follow Jesus and live like him.** Both People's Pantry and our discipleship classes meet in the portable buildings. Let's replace those buildings, expand our outreach, and keep those groups alive!

— **Catherine**

DISCIPLESHIP/PEOPLE'S PANTRY



THE NEED

Our temporary portable buildings, the current home for most of these ministries, are falling apart. One of the four was already removed. The Joyful Noise class for adults with special needs had to relocate when that building was demolished. Time is short for the three remaining portables. **Our community needs hope. We can help.**



THE PLAN



hope

FEBRUARY 10/11

Info meetings after Sat 6 pm and Sun 11 am services

MARCH 9/10

Info meetings after Sat 6 pm and Sun 11 am services

MARCH 23/24

Commitment Weekend: On Palm Sunday, bring your completed pledge card and any one-time contributions

APRIL 6/7

Two weeks later, the weekend after Easter, **we reveal the pledge total** and rejoice in what God has given!

hope

TLC HOPE CENTER

All programs under one roof:

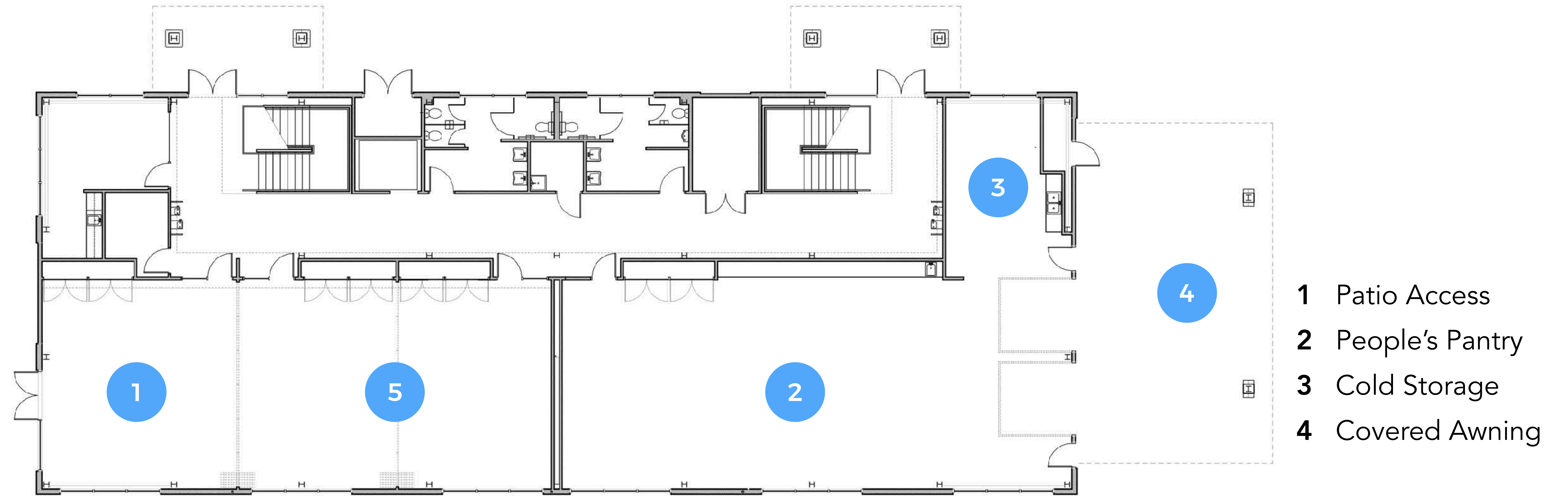
FOOD
MENTAL HEALTH
RECOVERY
DISCIPLESHIP





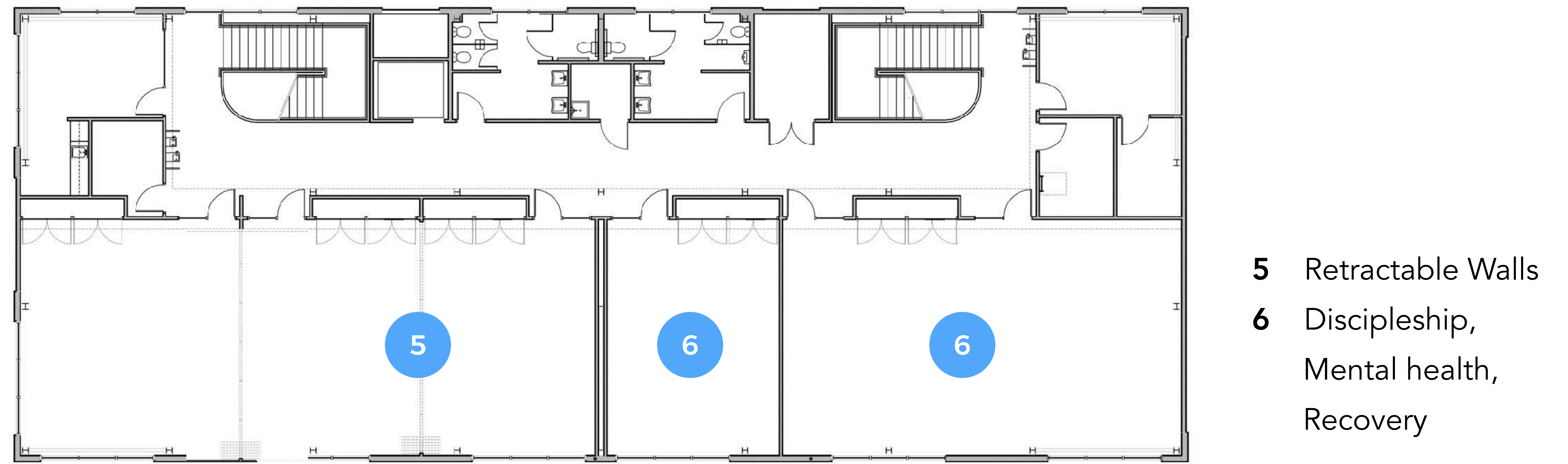
LOWER LEVEL

Folding walls allow for one large gathering space or up to three comfortable meeting rooms. Plus, there is direct access to a **new exterior patio!** New space for People's Pantry provides more room for **dry and cold storage**, along with **large access doors** for receiving and distributing food under a **covered drive-through!**



UPPER LEVEL

Our current classroom and gathering spaces are maxed out! **New rooms** will provide new growth opportunities for Sunday **School groups, Adult Education, recovery, grief support** and more while people are already on campus during weekend services and midweek programs.



PEOPLE'S PANTRY

Our new pantry will have a walk-in cold storage room, space for vastly expanded food inventory, and a drive-through portico for food distribution.

CARE

GriefShare, Divorce Care and mental health support groups will benefit from new classrooms.

RECOVERY

Faith-based recovery groups will enjoy living room-style meeting rooms.

DISCIPLESHIP

Bible studies, small groups, and adult education classes will gain much-needed space to grow.

PLAZA

New trellis-covered patio with tables and chairs for outdoor meetings and fellowship.





GLOBAL
COMPASSION

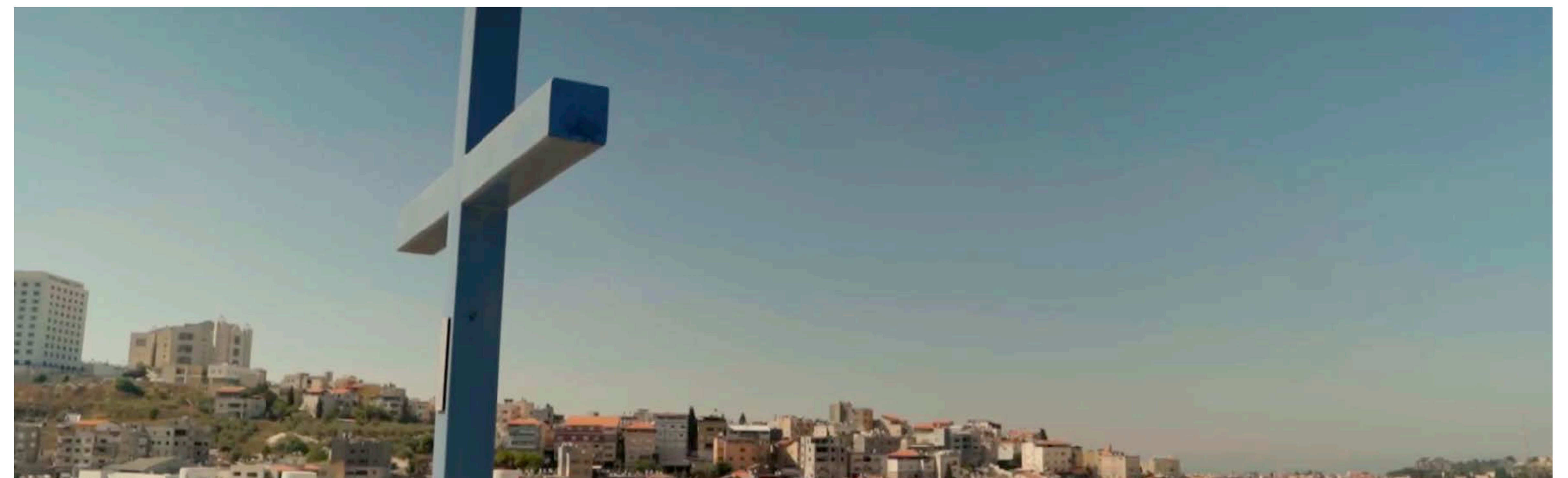
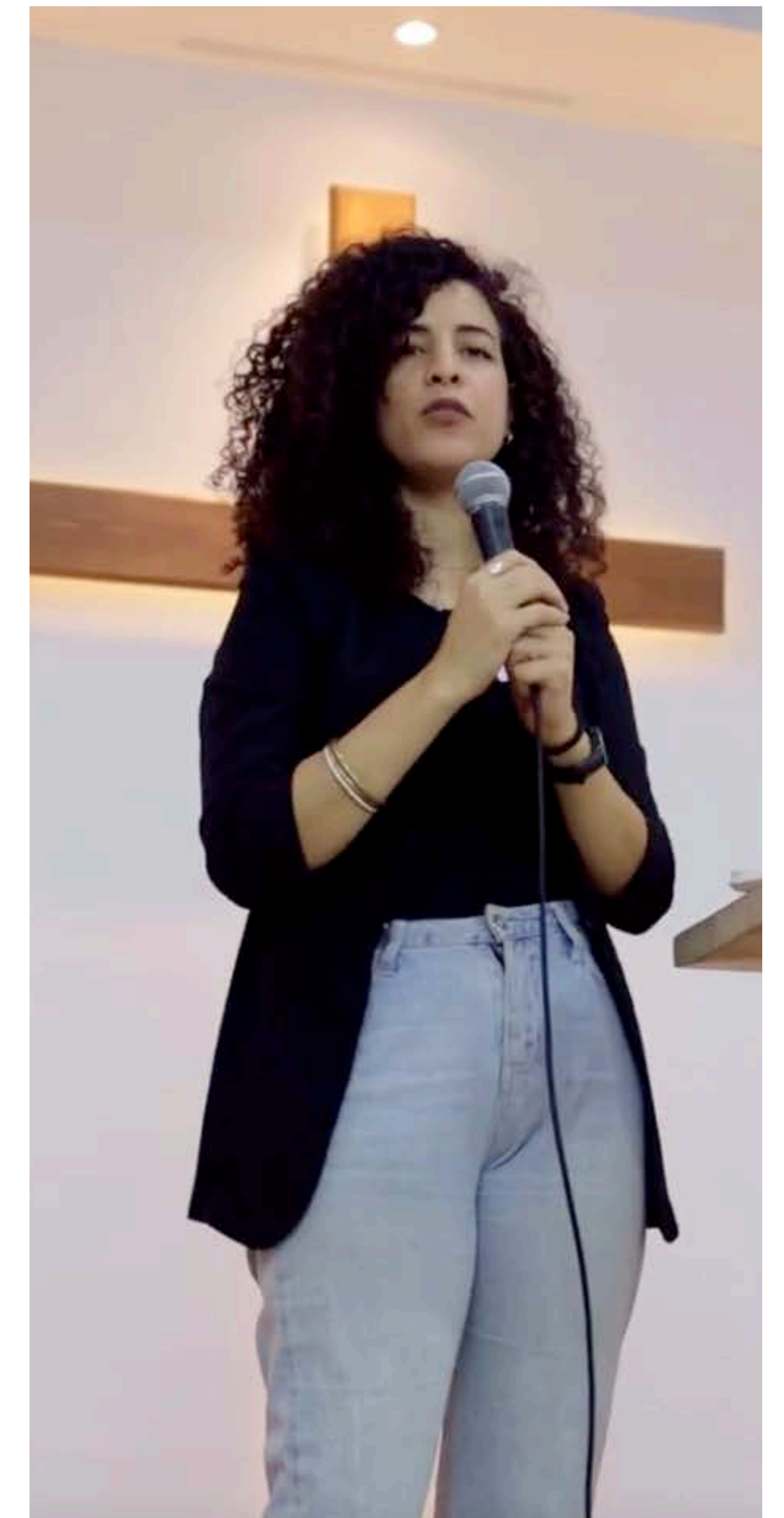
NAZARETH TRAINING INITIATIVE

COMPASSION COMPONENT

It's our tradition at TLC to include global missions in every building campaign; **for each building you see on our campus, there's a building overseas.** For instance, a clinic and classrooms were funded as part of our children's building.

We'll continue that tradition by helping complete the Nazareth Training Initiative – the expansion of the **Nazareth Evangelical College and Seminary** in Jesus' hometown. Founded in 2007, this is the only theological education institution in the area.

Our contribution of \$100,000 will complete the project, which includes a new library, study hall, two modern classrooms, and more office space.



WHO WILL USE THE HOPE CENTER?

The Hope Center will be used by People's Pantry for food distribution and storage, our faith-based recovery and mental health programs, and our men's and women's Bible Study groups. It will also be offered as a resource to the Santa Cruz community for meetings.

WHAT IS OUR CURRENT FINANCIAL STATE?

We are blessed with health. Our 2023 tithe budget was met. We have no outside debt. The congregation also gave over one million dollars to earthquake, fire, refugee, and flood relief last year. Trends are good: Weekend attendance is up 23% year-to-year. Over 100 were baptized last year. TLC en Español is thriving. With no debt, accelerating growth, and healthy giving, this seems to be a good time for this project.

WHY BUILD THIS NOW?

We have seen growth in each ministry using our portable buildings. Yet the portables are decaying. Monschke Hall is already over-booked with growing midweek adult classes, TLC en Español, and more. The portables need to be replaced with a permanent structure so these ministries can flourish. Our neighbors are hurting. They need our support. They need hope.

WHEN WILL WE BUILD?

We hope to begin construction Fall 2024 and open the building approximately 15 months later.

HOW MUCH WILL IT COST?

Our latest cost estimate from Bogard Construction is \$11.3 million.

HOW CAN I GIVE?

Although the construction costs are large, we have found historically that if we each contribute sacrificially — above and beyond our regular tithes — over a four-year pledge period, it can get done. You can give all at once or through our 4-year pledge drive. We can also arrange for automatic deductions, credit card, stocks, or other ways to give. Go to tlc.org/hope or see the attached pledge to find out more.

WHAT IF WE DON'T REACH THE GOAL?

We are relying on God to guide us through the pledge process. If it becomes clear that we need to, we will consider how we might reduce the scope of the project.

IS THERE A PLAN TO ADD SOLAR POWER?

Although not part of this project, we hope to add both rooftop and covered parking spots with solar panels—lowering our carbon footprint and reducing our energy costs in the future.

HOW CAN WE MAKE THIS HAPPEN?

We can't! **Only God can.** But as we have a "whatever it takes" attitude for His kingdom, **He can work through all of us** to do miracles! He already has: The Lord provided the funds for our entire campus and many buildings on the mission field through pledge drives like this one.



hope

YOUR PART

Thank you for your prayerful consideration!

PRAY

Please pray about this. Ask God for His wisdom and direction.

PLEDGE

Please bring your pledge card to church or fill it out online at tbc.org/hope by **Palm Sunday, March 23/24**. No pastor will know your personal pledge amount, but we need to know the congregation's total pledge so we can wisely build.

GIVE

Please faithfully give **through the pledge period, April 2024-April 2028**.

You can find out more about TLC Hope and pledge online at tbc.org/hope or by using the card and envelope attached to this page. Fill in the amount, and someone from TLC will reach out to help you set up your gift.

Do good and share with those in need. These are the sacrifices that please God.

Hebrews 13:16

LEARN MORE AT
TLC.ORG/HOPE

Set the oppressed free, and remove the chains that bind people...
feed the hungry, and help those in trouble.

Isaiah 58:6,10