



made new
found hope

2025
annual report





Dear Friends,

What a terrific time to be part of New Hope Church!

We are **refining** how we contagiously advance Jesus' redemptive work. We are **rejoicing** over many who have been made new and found hope in Jesus. We are **reaching** forward believing the Holy Spirit powerfully helps us make much of Jesus.

I am grateful to be with you. As we do reach forward let me highlight a few items.

New Faces Abound. We continue to see an increase in people's attendance and participation. Those who are spiritually hungry are finding our church family to be a safe community in which to move closer to Jesus. Praise the Lord!

Stewardship You Can Trust. Our ministry and business strategies are strong. Expenses remain below receipts. We have no debt. Our ministries are focused, user-friendly, and crafted to help people know Jesus and make Him known.

A Contagious Gospel Posture. With humility and determination, we are learning to better embody the heart of Jesus among those who cross our paths. Jesus' good news is being scattered far and wide. Each day lives are being changed!

Stories Needing to be Told. Stories abound of God bringing new hope to people everywhere. Tell us how you found new hope. Tell us how Jesus met you and is working in your life and the lives of those around you. Your story matters!

Growing and going together, let's keep our eyes on Jesus!

Matthew St. John
Senior Pastor

Tell us your story. How did you find new hope?

We would love to hear how God is working in your life through New Hope Church. Your story encourages others in their walk as well. Fill out the form at newhopechurchmn.org/story.



—Kerri



“A seemingly random incident brought me to new hope.”

Before New Hope Church, I understood listening for God’s voice primarily through prayer. But God began to lead me here during my regular commute along Highway 169. On occasion, I would attend a NHC service. Life was beautifully full as a young working adult and student.

During a move in the summer of 2001, a seemingly random incident—items falling from my truck along Highway 169 and Rockford Road, right in front of the church—became a clear sign of His direction. The Lord lifted my gaze to NHC while I quickly gathered the objects. It was here, at New Hope, that I found genuine, Christ-centered fellowship. God’s orchestration is undeniable.

Keep paying attention. Proverbs 4:20–22.



—Tara



**“God met me here when
I was at my lowest.
New Hope is my home.”**

I grew up at New Hope Church but walked away from both church and God at age 18. Many (many) years later I had a huge wakeup call after my health and my marriage crumbled. My life was in shambles.

One day I woke up and thought, “I should go to church,” and it just happened to be a Sunday morning. God met me here when I was at my lowest and led me out of the darkness. New Hope Church is my home.



—Armando, Natalia, Erick

MINISTRY FUNDING PLAN

This financial proposal represents the faithfulness of God and the commitment of His people. The proposal is a 1.0% increase from our congregationally-approved 2024–25 commitment.

AUDITOR’S REPORTS

Independent Auditor’s Report

We have audited the accompanying financial statements of New Hope Church *efca* (a non-profit church), which comprise the statements of financial position as of June 30, 2024 and 2023 and the related statements of activities and cash flows for the years then ended and the related notes to the financial statements.

In our opinion, the financial statements referred to above present fairly, in all material respects, the financial position of New Hope Church *efca* as of June 30, 2024 and 2023 and the changes in its net assets and its cash flows for the years then ended in accordance with accounting principles generally accepted in the United States of America.

Froehling Anderson, Certified Public Accountants & Advisors

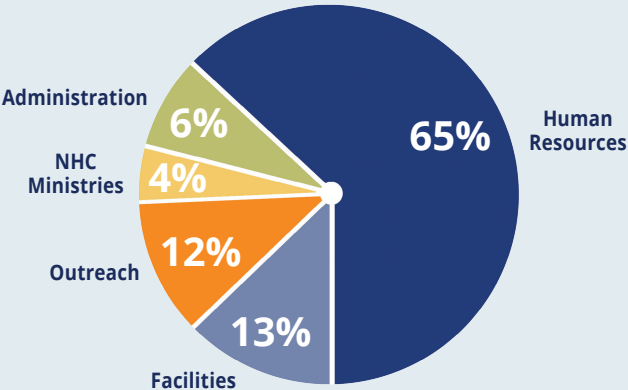
Internal Auditor’s Report

We have reviewed the accounting processes of the church in synchronization with the Independent Auditors. We audited the checks issued to vendors, the internal expense reports and the journal entries to ensure proper documentation and approvals.

In our opinion, we have found the accounting processes and internal controls in line with generally accepted accounting principles.

NHC Internal Audit Committee

Proposed Allocation of Funds July 1, 2025–June 30, 2026



	2024	2023
ASSETS		
Total Current Assets	\$1,186,168	\$1,284,140
Property & Equipment	14,745,059	14,693,782
Less Accumulated Depreciation	9,707,625	9,158,508
Total Property & Equipment	5,037,434	5,535,274
TOTAL ASSETS	\$6,223,602	\$6,819,414
LIABILITIES		
Total Current Liabilities	\$210,426	\$200,369
Total Long-term Liabilities	0	0
Total Liabilities	210,426	200,369
Net Assets		
Without Donor Restriction	5,764,480	6,363,075
With Donor Restriction	248,696	255,970
Total Net Assets	6,013,176	6,619,045
TOTAL LIABILITIES & NET ASSETS	\$6,223,602	\$6,819,414

Extended version of financials available from NHC financial services.



**“We found new hope
as a young married couple.
We’ve been here for
almost 60 years.”**

—Lois

ADMINISTRATIVE MINISTRIES	2025-26 PROPOSED	2024-25 APPROVED	INCREASE/DECREASE	
Staff Salary & Benefits	2,106,176	2,060,324	45,852	2.2
Senior Pastor Ministries	6,950	7,150	-200	-2.8
Office Support	95,395	83,385	12,010	14.4
Property	339,020	350,270	-11,250	-3.2
Food Service	9,000	10,000	-1,000	-10.0
Vehicles	2,155	2,155	0	0
Capital	58,000	58,000	0	0
General	-13,500	-15,850	2,350	-14.8
Technology	123,386	117,802	5,584	4.7
Funding from Reserves	0	0	0	0
SUBTOTAL ADMIN. MIN.	2,726,582	2,673,236	53,346	2.0%
DEPARTMENTAL MINISTRIES				
ADULT MINISTRIES				
Care & Connection	18,650	19,980	-1,330	-6.7
Latinos	12,292	12,292	0	0
Men	1,500	1,200	300	25.0
Women	1,500	450	1,050	233.3
Adult Ministries	33,942	33,922	20	0.1%
NEXT GEN MINISTRIES				
Kids	10,500	10,500	0	0
Students	13,300	13,100	200	1.5
CrossRoads	0	0	0	0
Next Gen Ministries	23,800	23,600	200	0.8%
OUTREACH MINISTRIES				
Community Outreach	94,100	102,400	-8,300	-8.1
Global Outreach	284,800	284,800	0	0
Outreach Ministries	378,900	387,200	-8,300	-2.1%
WORSHIP MINISTRIES				
Worship Ministries	57,272	72,772	-15,500	-21.3
Funding from Care & Love	-60,450	-62,930	2,480	-3.9
SUBTOTAL DEPT. MINISTRIES	433,464	454,564	-21,100	-4.6%
TOTAL GENERAL MINISTRIES	\$3,160,046	\$3,127,800	\$32,246	1.0%
WEEKLY AVERAGE	\$60,770	\$60,150	\$620	1.0%



**Tell us your story.
How did you find new hope?**

We would love to hear how God is working in your life through New Hope Church. Your story encourages others in their walk as well. Fill out the form at newhopechurchmn.org/story.

—Jim, Ryan

ELDER LEADERSHIP TEAM



DERRICK GROW
24 years



ERIC MARQUARDT
36 years



TOM NESS
4 years



DOUG PLATT
7 years



ERIC POLSON
5 years



MELVIN TENNANT
4 years



Scan to view the elder candidate videos.
Voting will take place at the annual meeting on May 18.



“Finding new hope
shortly after moving
to MN made my
transition smoother.
I felt seen and welcomed.”

—Tsitsi

PROPERTY COUNCIL

CHURCH CLERK



JIM JANICK
Chair



TOM FITZENBERGER
Vice Chair



RANDI SODERSTROM
Clerk



PAM LUNG
Vice Clerk

NOMINATING COMMITTEE



MIKE BROWN



JASON INGOLFSLAND



CINDY NELSON



JANETE RINGSMUTH

INTERNAL AUDIT COMMITTEE



TIM CONKLIN



DON SAYLER



JESSE SIGRIST



FAST FACTS

31

baptisms

1,314

average weekly attendance

20

new members

75

salvation stories

3,529

families served
at the food shelf

647

church volunteers



**We are proud to be hosting the New Hope Farmers Market this summer!
Join us in the parking lot on Thursdays, June 5–September 25, 3–7pm.**

If you are interested in becoming a food vendor or would like to volunteer,
email kjaeger@newhopemn.gov or to volunteer at the NHC booth, email
communityoutreach@newhopechurchmn.org.