



honoring our past by  
building the future



2026  
annual report





Dear Friend,

What an exciting time to be part of New Hope Church! Here's a few reasons why.

**Jesus is faithful.**

We are seeing lives shaped by His grace—people coming to faith, returning to faith and growing as disciples. This is not accidental. Jesus is at work and He will carry forward to completion what He has begun.

**You are generous.**

Because of you, people are loved well, ministry is strengthened and we are reaching for what lies ahead with unity, joy and purpose. Your generosity is not simply sustaining ministry, it is advancing Jesus' mission. We continue to steward all that has been given to us with gratitude, wisdom and dependence on the Lord.

**The future is here.**

Through the *Build New Hope* campaign, we are not only responding to present needs, we are stepping into God's future for us. We are preparing to receive those not yet here—the next generation, our neighbors and others who will one day encounter Jesus. God is helping us be a church that makes room. Together, let's do this!

**We are on the move.**

By God's help, we are becoming a people known not just for gathering, but scattering—into homes, workplaces, schools and neighborhoods—making much of Jesus, nearby and around the world. Even now, stories are emerging of transformation, healing, reconciliation and renewed hope. Praise God from whom all blessings flow!

I'm so thankful to be on this journey with you. Growing and going together, let's keep our eyes on Jesus!

Matthew St. John  
Senior Pastor





# “New Hope feels like a true home.”

## Meet Amelia & Grace

When I moved to New Hope, Minnesota, I was looking for a place to belong. Born in Liberia and moving to the U.S. in 2003, I knew that a strong community is essential for navigating life’s challenges.

My faith deepened significantly following a divorce in 2019. That difficult season taught me to stop relying on my own strength and lean entirely on God. Since then, my relationship with Him has grown in ways I never expected.

I’m drawn back to New Hope Church for its uplifting worship, insightful preaching and the beautiful diversity. Sundays have become a special family tradition. I attend the 9am service alongside my father, Donald, and my daughter, Grace. Grace and I love serving as greeters together, welcoming others into the warmth of the church.

New Hope feels like a true home because it reflects the world God created—a vibrant tapestry of different generations and backgrounds. Whether through Africonnect or the various specialized ministries, I am grateful to be part of a church that celebrates such a diverse community of faith.





## HONORING OUR PAST BY BUILDING OUR FUTURE

The *Build New Hope* campaign is a three-year capital campaign dedicated to raising \$3 million. The future of our ministry walks through our doors every Sunday. We are committed to creating a **modern, safe kid's area** along with addressing some **essential building maintenance upgrades**. This campaign will secure the foundation that supports our congregation and all our ministries.

## LET'S BUILD NEW HOPE TOGETHER!



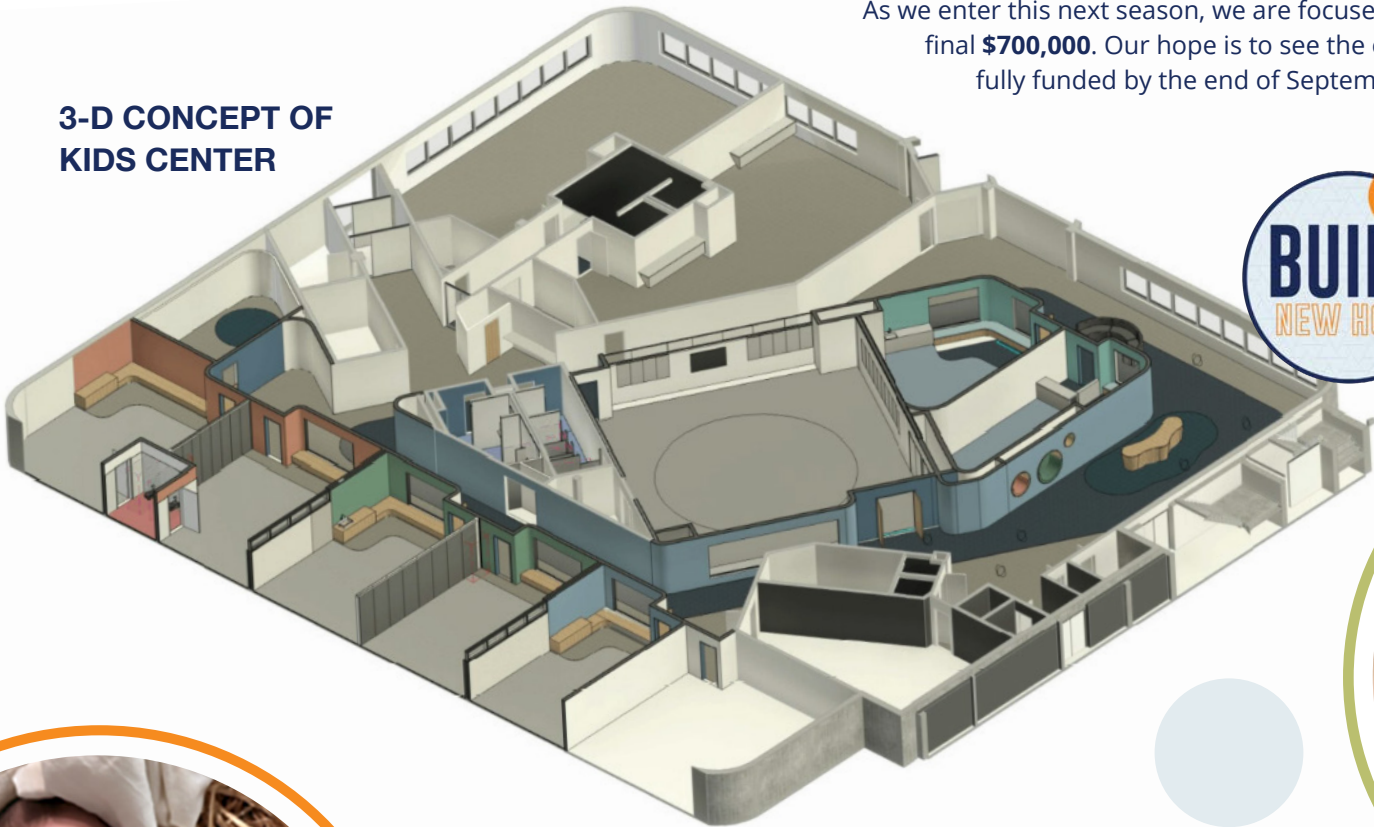
LEARN MORE



# You are part of the story!

Every gift is a brick in the foundation of what we are building. Together, we aren't just renovating a building—we are **building new hope** for every family that walks through our doors.

## 3-D CONCEPT OF KIDS CENTER



## What's next?

As we enter this next season, we are focused on the final **\$700,000**. Our hope is to see the campaign fully funded by the end of September 2026.



Because of your faithfulness, the dream of a dedicated, secure, and vibrant Kids Center is moving from the blueprint to the building phase.



# NEXT GEN FUN FACTS

Here is what a typical year of ministry looks like for our youngest members.

# 150

### families served

Local families who call New Hope their home.

# 33.5

### extra hours together

We love that New Hope is a safe place for students to stay late after programs “officially” end.

# 10,000

### nametags printed

Proof that you’re never just a number here.



# 120

### kids in Awana

Plus 36 dedicated volunteers!

# 5,000

### coloring sheets

Used to help kids discover Jesus every single Sunday morning.

# 45

### middle school students

And ten committed volunteers all navigating faith and friendship together.

# 55

### high school students

Being invested in by 16 leaders weekly. Our next generation of leaders in training.

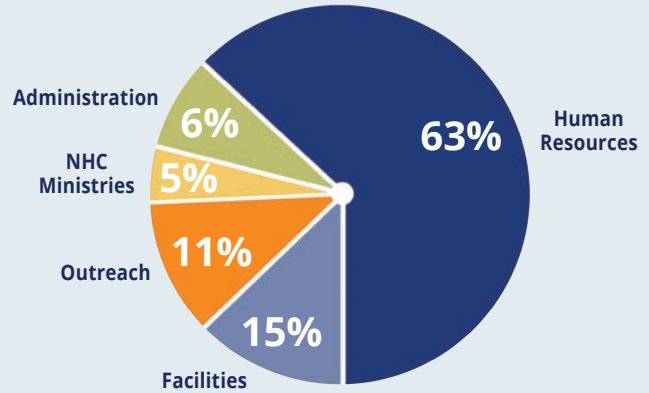


# MINISTRY FUNDING PLAN

This financial proposal represents the faithfulness of God and the commitment of His people. The proposal is a 0.2% decrease from our congregationally-approved 2025–26 commitment.



## Proposed Allocation of Funds July 1, 2026–June 30, 2027



# AUDITOR'S REPORTS

## Independent Auditor's Report

We have audited the accompanying financial statements of New Hope Church *efca* (a non-profit church), which comprise the statements of financial position as of June 30, 2025 and 2024 and the related statements of activities and cash flows for the years then ended and the related notes to the financial statements.

In our opinion, the financial statements referred to above present fairly, in all material respects, the financial position of New Hope Church *efca* as of June 30, 2025 and 2024 and the changes in its net assets and its cash flows for the years then ended in accordance with accounting principles generally accepted in the United States of America.

*Froehling Anderson, Certified Public Accountants & Advisors*

## Internal Auditor's Report

We have reviewed the accounting processes of the church in synchronization with the Independent Auditors. We audited the checks issued to vendors, the internal expense reports and the journal entries to ensure proper documentation and approvals.

In our opinion, we have found the accounting processes and internal controls in line with generally accepted accounting principles.

*NHC Internal Audit Committee*

ASSETS	2025	2024
<b>Total Current Assets</b>	<b>\$1,048,707</b>	<b>\$1,186,168</b>
Property & Equipment	14,812,263	14,745,059
Less Accumulated Depreciation	10,245,256	9,707,625
<b>Total Property &amp; Equipment</b>	<b>4,567,007</b>	<b>5,037,434</b>
<b>TOTAL ASSETS</b>	<b>\$5,615,714</b>	<b>\$6,223,602</b>
<b>LIABILITIES</b>		
Total Current Liabilities	\$187,994	\$210,426
Total Long-term Liabilities	0	0
<b>Total Liabilities</b>	<b>187,994</b>	<b>210,426</b>
<b>Net Assets</b>		
Without Donor Restriction	5,182,758	5,764,480
With Donor Restriction	244,962	248,696
<b>Total Net Assets</b>	<b>5,427,720</b>	<b>6,013,176</b>
<b>TOTAL LIABILITIES &amp; NET ASSETS</b>	<b>\$5,615,714</b>	<b>\$6,223,602</b>

*Extended version of financials available from NHC financial services.*

<b>ADMINISTRATIVE MINISTRIES</b>	<b>2026-27 PROPOSED</b>	<b>2025-26 APPROVED</b>	<b>INCREASE/DECREASE</b>	
Staff Salary & Benefits	2,031,390	2,106,176	-74,786	-3.6
Senior Pastor Ministries	6,950	6,950	0	0
Office Support	96,430	95,395	1,035	1.1
Property	348,526	339,020	9,506	2.8
Food Service	8,600	9,000	-400	-4.4
Vehicles	2,155	2,155	0	0
Capital	124,028	58,000	66,028	113.8
General	-13,400	-13,500	100	-0.7
Technology	121,134	123,386	-2,252	-1.8
<b>Funding from Reserves</b>	<b>0</b>	<b>0</b>	<b>0</b>	<b>0</b>
<b>SUBTOTAL ADMIN. MIN.</b>	<b>2,725,813</b>	<b>2,726,582</b>	<b>-769</b>	<b>0%</b>
<b>DEPARTMENTAL MINISTRIES</b>				
<b>ADULT MINISTRIES</b>				
Care & Connection	22,550	18,650	3,900	20.9
Latinos	12,812	12,292	520	4.2
Men	1,500	1,500	0	0
Women	1,500	1,500	0	0
<b>Adult Ministries</b>	<b>38,362</b>	<b>33,942</b>	<b>4,420</b>	<b>13%</b>
<b>NEXT GEN MINISTRIES</b>				
Kids	10,500	10,500	0	0
Students	14,300	13,300	1,000	7.5
CrossRoads	0	0	0	0
<b>Next Gen Ministries</b>	<b>24,800</b>	<b>23,800</b>	<b>1,000</b>	<b>4.2%</b>
<b>OUTREACH MINISTRIES</b>				
Community Outreach	84,100	94,100	-10,000	-10.6
Global Outreach	275,800	284,800	-9,000	-3.2
<b>Outreach Ministries</b>	<b>359,900</b>	<b>378,900</b>	<b>-19,000</b>	<b>-5%</b>
<b>WORSHIP MINISTRIES</b>				
<b>Worship Ministries</b>	<b>67,106</b>	<b>57,272</b>	<b>9,834</b>	<b>17.2</b>
<b>Funding from Care &amp; Love</b>	<b>-61,150</b>	<b>-60,450</b>	<b>-700</b>	<b>1.2</b>
<b>SUBTOTAL DEPT. MINISTRIES</b>	<b>429,018</b>	<b>433,464</b>	<b>-4,446</b>	<b>-1%</b>
<b>TOTAL GENERAL MINISTRIES</b>	<b>\$3,154,831</b>	<b>\$3,160,046</b>	<b>-\$5,215</b>	<b>-0.2%</b>
<b>WEEKLY AVERAGE</b>	<b>\$60,670</b>	<b>\$60,770</b>	<b>-\$100</b>	<b>-0.2%</b>



**“We love to serve  
as greeters!  
It’s so fun to  
welcome people  
and be part of a team.”**

**— Ella & Ariana**

# ELDER LEADERSHIP TEAM

New Hope Church is led by an elected elder leadership team of twelve men, plus the senior pastor. They oversee and promote the spiritual growth and overall ministry of the church, including the oversight of the church's business affairs. **Elders serve a 3-year term. Vote for 4.**

*\*Indicates Incumbant*



**TODD BENSON**



**BRANDON BURBACH**



**DOUG PLATT**



**AARON TOWNER**



**MICHAEL YEE\***



**SCAN**  
to view the  
elder candidate  
videos

**Voting takes place at the annual meeting on May 17.**

# NOMINATING COMMITTEE

The Nominating Committee consists of four people plus two elders and the senior pastor. They are responsible to discern qualified candidates from the congregation for all elected positions. **2-year term. Vote for 2.**



**TRACY ALLANSON**



**ANDREA KESSLER\***



**ANGELINA MESSNER**



**BETH NORDSTROM**

# CHURCH CLERK

The Church Clerk keeps an accurate record of the proceedings and decisions at all congregational meetings. **1-year term. Vote of affirmation.**



**RANDI SODERSTROM**  
Clerk



**PAM LUNG**  
Vice Clerk

“There are two things I know about this church: One, you will meet Jesus. Two, everyone is welcome!”

—Leroy

# INTERNAL AUDIT COMMITTEE

The Internal Audit Committee, consisting of three to five members, is responsible for securing an annual audit of the church financial records. **1-year term. Vote for 4.**



**GREG BOTTS**



**MATTHEW  
BUSACKER**



**TIM CONKLIN\***



**DAVID GEDDES**



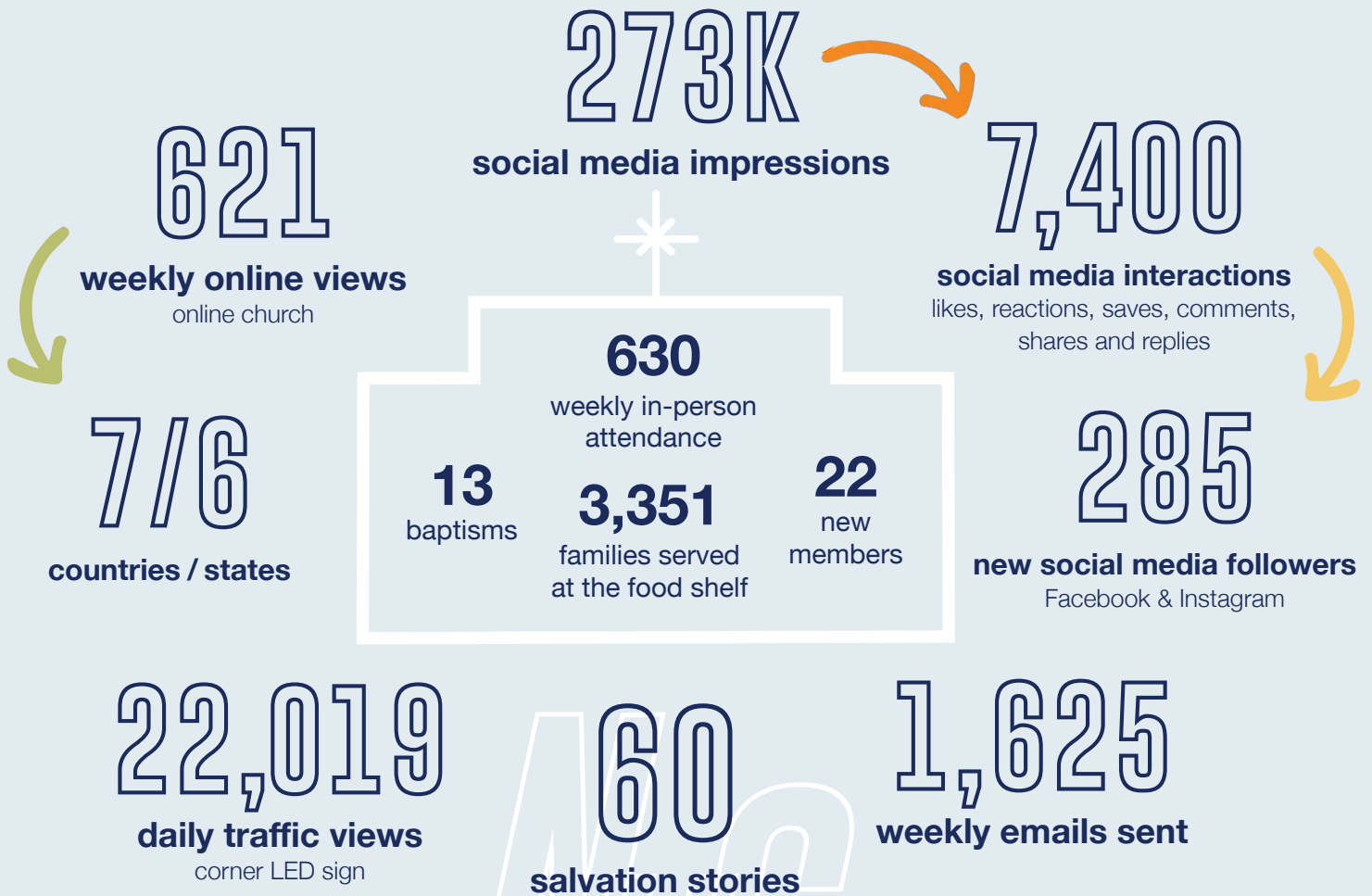
**JON LUECK**



**JESSE SIGRIST\***

# NHC TOUCH POINTS

Whether in person or online, every “impression” is an opportunity.  
These numbers represent a church that is engaged in a changing world.



**The building is the hub. The reach is much wider!**