

WEDNESDAYS IN LENT

MARCH 12 - APRIL 9
BETHEL HIGHLANDS

SERVICES: 5 & 7PM
SUPPER: 5:45PM

DETAILS



VICKI KUEPPERS



WAYNE ANTHONY



VICKY MOUNTAIN



THE JORGENSENS



SAMANTHA GRIMES

BETHEL
CONNECT. GROW. SERVE
920 Third Street
Hudson, WI 54016

Non-Profit
Organization
U.S. Postage Paid
Hudson, WI
54016
Permit #79

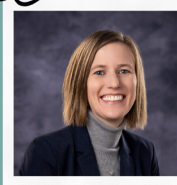
Please check
for the latest updates
regarding worship,
classes, and events at:
bethelhudson.org



March
2025
Volume 10
Issue 3

BETHEL CONNECTIONS

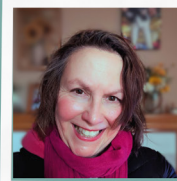
Welcome
NEW
COUNCIL
MEMBERS



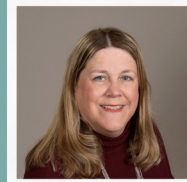
AMANDA LINEHAN



BRIAN KUHL



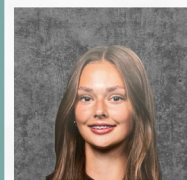
JULIE MACSWAIN



CARRIE TREPLOW



MARSHALL AGREY



MACIE OIAN



CHARLES BOEDER

GOD HAS AND IS DOING AMAZING THINGS!

On January 26th Bethel gathered for our Annual Celebration to give God thanks for all the ways He has been faithful to us in 2024. Some of those things included our new roles as Lead Pastor and Executive Pastor. We also gave God thanks for our new personnel at Bethel Highlands Preschool: Michelle Webb as the Preschool Director and Leah Knutson as the Assistant Director, as well as new church team members: Middle School Director, Paul Deziel and Matt Aubert in the combined roles as High School Director and Community Care Coordinator. If that is not enough, we also recognized God's blessings on our finances and ending the year with a surplus of over \$200,000 that will help fund projects that we were not otherwise able to do in 2024. We also celebrated the fact that Bethel gave over \$210,000 to a variety of local, national, and international organizations. All these accomplishments were possible because of your generosity and giving.

God has done and IS doing amazing things here at Bethel. During the Annual Celebration we also talked about the amazing things God has in store for us in 2025. We are excited for the new council members that were voted on: Julie MacSwain, Charles Boeder, Carrie Treptow, Amanda Linehan, Brian Kuhl, Marshall Agrey, and Macie Oian. In addition, we passed a balanced budget of \$1,785,939. Thank you to each of you who pledged and are giving to Bethel in 2025 to help us meet our new budget. Although we did have to reduce some ministries to make our budget, we will reevaluate our income and expenses mid-year as we know we will receive more pledges throughout the year. Furthermore, as a church, we anticipate starting to have conversations about strategic planning. Over the past year we have been able to evaluate all areas of ministry with your help and input. Now it is time to ask, "Where is God calling Bethel in the next 3-5 years?" It will be through these conversations

IN-PERSON WORSHIP AT BETHEL

SUNDAYS 9:00AM | CONTEMPORARY SERVICE | HIGHLANDS CAMPUS

LIVESTREAMED ON BETHEL'S WEBSITE, FACEBOOK PAGE, & YOUTUBE CHANNEL

SUNDAYS 10:30AM | TRADITIONAL SERVICE | DOWNTOWN CAMPUS

LIVESTREAMED ON BETHEL'S WEBSITE, FACEBOOK PAGE, & YOUTUBE CHANNEL



Bethel Lutheran
Church, Hudson, WI

facebook.com/blchudson/

Stay Connected



PASTORAL STAFF

Ladd Sonnenberg, Lead Pastor
Kris Kurzejeski, Executive Pastor

YOUTH MINISTRY STAFF

Matt Aubart, High School Ministry
Paul Deziel, Middle School Ministry
Carole DeJardin, Children's Ministry
Marcie Andrews, Youth Ministry
Communications Director

MUSIC MINISTRY STAFF

Skip James, Traditional Music Director
Craig Koehnen, Contemporary Worship
Director
Sonja McGill, Handbell Director

SUPPORT STAFF

Gwen Cossin, Business Administrator
Tammy Huberty, Administrative Assistant
Kathy Jeska, Worship Support Coordinator
Hannah Cobian, Communications Director
Koreen Theisen, Event Coordinator
Matt Aubart, Care Ministry Coordinator
John Lischewski, Donations Accountant
Patrick Willson, Media Technician

FACILITY & CUSTODIAL STAFF

Cory Wong, Facilities Manager
Will Jeska, Facilities Support Specialist

BETHEL HIGHLANDS PRESCHOOL,

Michelle Webb, Preschool Director
Leah Knutson, Preschool Assistant Director

Staff can be reached via email through
bethelHUDSON.org/about/staff

DOWNTOWN CAMPUS

920 Third Street | Hudson, WI
715.386.8821

HIGHLANDS CAMPUS

504 Frontage Road | Hudson, WI

together we will be able to chart a course moving forward.

Psalm 118:29 commands us to: "Give thanks to the Lord for He is good, His love endures forever." And there is so much to give God thanks and praise for. The greatest of all things about which we rejoice is God sending His Son into our world to ultimately take our sins and pay the price for them, so that through His death, we can have life. It is this story we get to hear and reflect on once again during our Ash Wednesday services on March 5th at 1:00 pm, 5:00 pm, and 7:00 pm. We truly hope that you invite your family and friends to join you for one of these services.

Through this service we remember our sins and failures with the imposition of ashes, but most of all we rejoice through receiving Holy Communion that Christ has come and brought us out of darkness and into His light.

As we continue to remember God's faithfulness both in the past, present, and future, we pray that you and your family make it a practice this coming Lent to join us on Wednesday nights for our Holden Evening prayer services at 5:00 and 7:00 pm, with a dinner hosted in between at 5:45 pm. Our Lenten services and meals are truly a wonderful time to spend together and remember God's faithfulness.

In Service to Christ,
Pastor Ladd and Pastor Kris



Welcome, New Disciples!

ASH WEDNESDAY
Services at Bethel
Wednesday, March 5
1PM | Downtown Campus
5PM & 7PM | Highlands Campus
Details at bethelHUDSON.org

Soup & Baked Potato Bar!
Wednesday, April 2

Lenten Meal Fundraiser supporting
Bethel's 2025 High School Mission
Trip to Colorado Springs

Easter Lily Orders
Order envelopes are available
at the Bethel Downtown Office.
Order at bethelHUDSON.org
or scan here!

Deadline: Tuesday, April 1

GENERATION TO GENERATION
WE GROW IN FAITH AS
BETHEL MEMBERS,
VOLUNTEERS,
COMMITTEE
MEMBERS,
MUSICIANS, AND
TOGETHER AS A
COMMUNITY

CONNECT WITH US ONLINE

FACEBOOK.COM/BLCHUDSON/ YOUTUBE: BETHEL LUTHERAN CHURCH HUDSON WI

INSTAGRAM: BETHELHUDSON BETHEL@BETHELHUDSON.ORG

BETHELHUDSON.ORG

Visit Bethel's Facebook page to view more photos from recent events

Youth

2024-2025 YOUTH PROGRAMMING

Registration remains open for all classes

Details & Registration at bethelHUDSON.org/youth for Sunday School through 9th Grade Confirmation

Youth Ministry KEY DATES

- MAR 2 9:00AM**
2nd Grade Faith Milestone Class during Sunday School (students & parents)
- MAR 5 ASH WEDNESDAY**
No Wednesday classes or High School Youth Group
- MAR 9 FAMILY WORSHIP DAY**
No Sunday School class
- MAR 23 9:00AM**
2nd Grade Faith Milestone Blessing during worship
- MAR 28 6-9PM**
4th Grade Leprechaun Lock-in

SUNDAY SCHOOL OFFERING 2024-25 CEREAL BOX CHALLENGE

Bring unopened boxes of cereal to Sunday School. Donations will benefit the St. Croix County Food Bank. Collection bins are behind the Welcome Centers.

Last Collection Date: March 16

First Communion

During Lent, 3rd graders will prepare for their First Communion with two classes. They will then receive their First Communion during Maundy Thursday worship.

CLASSES: Thursday, April 3 | 6:30-8PM | Highlands
Tuesday, April 8 | 6:30-8PM | Highlands

WORSHIP: Thursday, April 17 | 1PM | Downtown
5 or 7pm | Highlands

Any older students who have not yet received their First Communion are welcome. Please contact Marcie Andrews (mandrews@bethelHUDSON.org)

MIDDLE SCHOOL MISSION TRIP 2025

PUSH WEEK

June 25-29

PRA-YER-UN-ITY-SER-VICE-HOSP-ITAL-ITY

Registration Deadline: April 15 | Details & Information at bethelHUDSON.org

4th Grade Leprechaun Lock-in

games - tricks - activities - and more!

Friday, March 28
6-9pm | Highlands

Scan the QR Code for details and registration

Registration now open for Bethel's 2025 VBS!

TRUE NORTH

Trusting Jesus in a Wild World

K-5 July 14-18 9am - noon
Preschool July 21-24 9-11am

K5 Participant | K5 Volunteer | Preschool Participant | Preschool Volunteer

Details & Registration for Participants & Volunteers at bethelHUDSON.org or scan the codes.

BETHEL WEEK at CAMP WAPO

SEEDS August 1-3 | currently in grades 1-3
YOUTH CAMP August 3-8 | currently in grades 4-9
ONE DAY August 6 | currently in grades K-2

Bethel's priority registration ends February 15!
Details at lakewapo.org

Bethel offers a variety of options for you to grow in your faith with Bible Studies. Details at bethelHUDSON.org

Naomi Gathering: March 10 | 1:00pm | Ann Martinson's Home

Dorcas Gathering: March 13 | 9:30AM | Downtown, Fellowship Hall

Mary Gathering: March 13 | 1:00PM | Downtown, Conference Room

Ruth Gathering: March 13 | 2:00PM | Bonnie Knutson's Home

ABC Bible Study: Mondays | 8:30AM | Via Zoom

ABC strives to promote an atmosphere where all feel welcome to join the discussion - there is no prep needed! Contact Karen at kypavlis@gmail.com for more information and the Zoom link

Men's Bible Study: Saturdays | 8:00AM | Highlands Campus

This group welcomes any man who would like to attend. Contact Aethan at hartav@comcast.net for the details.

Men's Fellowship Breakfast and Bible Study: Meet at Key's Cafe on the first and third Wednesday of each month at 7:00AM. New members are always welcome. Contact Curt at: Truclarson1@gmail.com

BETHEL BOOK CLUB

All who love to read and discuss books are welcome!

Wednesday, March 5 | 1:00PM
Downtown Campus, Fellowship Hall
Lessons in Chemistry by Bonnie Garmus

Bethel Women's Retreat

SATURDAY, MAY 3 | BETHEL HIGHLANDS
REGISTRATION DEADLINE: MARCH 15

DETAILS & REGISTRATION AT BETHELHUDSON.ORG

All Church BINGO

FRIDAY, MARCH 21 AT 6:00PM
BETHEL HIGHLANDS CAMPUS

REGISTER AT BETHELHUDSON.ORG
WIN PRIZES | RAISE FUNDS | CONNECT



ACTIVITIES

You are invited to be a part of the following activities to connect at Bethel!

Quilting

Friday, March 14 & Tuesday, March 25
Downtown, Fellowship Hall | 9:00AM

Hardanger

Thursday, March 6
Downtown, Conference Room | 1:00PM

Spring Forward March 9

Don't Forget to Change Your Clock
+1 hour

BETHEL BREWS & BROS

Friday, March 28
5:00-7:00pm
Hop & Barrel, Hudson
Details at bethelHUDSON.org



CREATION CARE DECLUTTERING TIPS

It is that time of year when many take to decluttering their closets and cabinets. A wonderful way to repurpose the items that you would like to part with (and that would also keep them out of landfills) is to think of who else might be able to use them! Here are some examples of some local options to consider: secondhand shops, high school and university programs, religious organization collection events or other special programs are all thoughtful outlets. Some local organizations that welcome your donations are Operation HELP, Youth Action, and Goodwill in Hudson, Fresh Threads Express in Hudson, Adoray's Thrift Stores, Second Chances and Our Neighbor's Place in River Falls and Grace Place in New Richmond. Coco's Heart Dog Rescue in Somerset accepts lightly used pet supplies and unopened pet food—they have a drop-off site at Angel's Pet Store in Hudson. Operation HELP also publishes a tip sheet on their website titled "Tips for Organizing a Charity Collection Drive" for groups that would like to organize a collection event.

For donations of gently used furniture, consider places like Habitat for Humanity ReStores and We Do Feet in Hudson where items such as tables, chairs, dressers, sofas, lamps, appliances, and cookware are welcome. Check out the websites of these organizations if you would like more details on donations and drop-off sites! If you have suggestions for additional local outlets, please forward them to Bethel's Creation Care Team or Pastor Ladd.



Bethel Highlands Preschool



Thank you to all the amazing people who share their talents with our students.



BHP Specials



VOLUNTEERS NEEDED

WOMEN OF BETHEL LENTEN MEAL
WEDNESDAY, MARCH 12
BAKE HOT DISHES & MAKE JELLO
CONTACT GAIL WITH AVAILABILITY
AT NOLAN.P@COMCAST.NET

EASTER EGGS NEEDED

IF YOU HAVE EMPTY PLASTIC EASTER EGGS, THE OUTREACH COMMITTEE REQUESTS DONATIONS FOR AN UPCOMING REVERSE EASTER EGG ACTIVITY.
DROP OFF: NOW - MARCH 16
AT BOTH BETHEL CAMPUSES

HOME Meal Gathering & Fellowship

Thursdays,
March 6 & 20
5-6PM
Bethel Downtown

Free home cooked meal served to all!

Volunteers always welcome. Visit bethelhudson.org/serve/local to learn more about this great local ministry.

Sing Me! A Tribute To The Piano Men of the 70's

Showcasing the music of Neil Sedaka, Barry Manilow, Elton John and Billy Joel

FEATURING
CRAIG HOEHNEN - PIANO AND VOCALS

WITH SPECIAL GUESTS
FULL BAND: CHRIS BOSTON, MIKE BRUESKE, SAM CHAPMAN, PAUL GAUC, PHIL RADIDLO
TRACEY JENKINSON & NANCY LONG

BACKUP VOCALS: KATIE POSSEHL, CALLA JENKINSON & HEIDI SELANDER

LIGHTING & SOUND:
STEVE JERLOW / SERIOUS SOUND

SUNDAY, APRIL 6 AT 3PM
BETHEL HIGHLANDS CAMPUS
504 FRONTAGE RD. HUDSON, WI

FREE WILL DONATIONS - PROCEEDS TO ST. CROIX VALLEY FOUNDATION'S - VALLEY MUSIC EDUCATION FUND
DETAILS AT BETHELHUDSON.ORG

Alan Park Memorial Build

Join a volunteer group from Bethel traveling to Kentucky from April 28-May 2 to build in honor of Alan Park

Do not need to be skilled in construction

Contact Vicki at 715-410-3800 or vickidatt@gmail.com with interest!

