



IN THE INTERIM

Eric Leshar, Interim Senior Pastor

When a pastor leaves, the challenge facing the congregation is more than the calling of another pastor. The congregation needs to do the work necessary to lay the foundation for a successful next chapter of ministry by creating space between the previous pastor and the new pastor. Space that will allow the new pastor to flourish. This “space between” is led by an Interim Pastor. During the interim future directions and priorities for the mission and ministry of the congregation culminates in the development of a “Ministry Site Profile” (MSP). The MSP describes in detail who the congregation is and where God is calling it to go in mission, and the qualities needed in the new pastor. Here is an overview of the process:

The Ministry Site Profile (MSP) provides:

- An opportunity to review, assess, and claim the priorities of the congregation
- Gathers Information for the call committee about the congregation and a description of leadership needs which will guide their work
- Provides direction for the synod staff in recommending candidates for consideration by the call committee
- Gives a picture of the congregation to the candidates as they consider serving the congregation.



RLC TRANSITION TEAM UPDATE

As we gear up to the process to welcome a new senior pastor, our transition team has formed and is working to lay the groundwork before forming a call committee. Our main focus is updating the ministry site profile to send off to the Synod. This document captures information about our congregation for potential candidates to review. To make sure it truly reflects who we are, we’re reaching out to you, the congregation, through three surveys during the month of May. We’re asking you to identify characteristics of RLC as well as key skills and gifts we’re looking for in our next senior pastor. Your input is important, so please take a moment to share your thoughts! You can find the survey link on our website, or pick up a paper version from the Welcome Desk. We’ve also gathered more informal feedback during the Block Party and one Sunday morning in May. Once we’ve gathered all the data, we’ll put together the profile and then share the findings with you all in some informative sessions. Stay tuned for updates!

The Transition Team

- Kevin Miller
- Andrew Olson
- Trupti Storli
- Joe Ziegler
- Sara Mohn

THE TRANSITION TEAM

The congregation council and interim pastor will work together to develop/appoint a Transition Team. The members of the Roseville Lutheran Transition Team include: Andrew Olsen, Joe Zeigler, Kevin Miller, Sara Mohn, and Trupti Storli. This team will compile data, complete the MSP, and manage other transitional concerns. The Transition Team under the guidance of the interim pastor leads that process, and could be any one of several groups:

- A specially appointed task force
- The call committee (e.g., in a very small congregation).

When the MSP is completed and approved by the St. Paul Synod then the Transition Team disbands and the Call Committee begins the work of interviewing and identifying the preferred candidate for your next Senior Pastor. Candidates will be identified by the Synod but the congregation will have an opportunity to offer names as well. Once identified, the preferred candidate will need to be approved first by the Congregation Council and then the Congregation.

I would hope that we have a preferred candidate identified by the end of the year. This timeline is not under our control. The Holy Spirit works on a timeline different than mine or yours. So, this is my best guess at the current time. If you have any questions then contact me at the email listed below or ask me at church.

Interim Senior Pastor
Rev. Eric Leshar
elshar@rosevillelutheran.org

SUMMER THEME AND WORSHIP SERIES: EVERYDAY CONTEMPLATIVE

For our summer series, we are following along with L. Roger Owens’s book *Everyday Contemplative: The Way of Prayerful Living*. In his book and throughout our series, we will explore a different way to be contemplative, a way that allows our everyday lives to be contemplative - not just times of being alone, in an extremely somber setting. We will explore what it means to be people living ordinary lives and responding to God’s call of divine love for us.

This summer, we invite you to explore prayer and spiritual practices and follow along with this book. Each week we will go through the seven chapters that explain a characteristic of a contemplative approach to praying and living: Longing, Attention, Patience, Playfulness, Vulnerability, Nonjudgment, and Freedom. We will also have corresponding spiritual practices for you to be able to learn and take with you into each week.

We will have copies of *Everyday Contemplative* available for pick-up at our welcome desk or our office if you would like to follow along, are unable to join us on Sunday mornings, or would like to invite others into a small group.



RLC WELCOME STATEMENT

Called by Jesus, Roseville Lutheran Church welcomes you with open arms, minds, and hearts. We are all beloved children of God, and we celebrate each other completely: all ages, abilities, races and ethnicities; all sexualities, gender identities and expressions; all family circumstances, and experiences.

RLC pledges our authentic welcome and hospitality. We commit to learn, to grow, and to undo oppressive norms that divide us, while we humbly strive to dismantle barriers to racial, social, and economic justice.

Following Christ’s example, let us love God and our neighbor together.



“pRAISE RLC: LIVE!” THANK YOU FOR YOUR SUPPORT!

Val Velde, RLC Council President

It is hard to believe another pRAISE RLC campaign is in the books! What a great way to come together as a community united by grace. We had a fabulous campaign this year from April 28 to May 2, showcasing our shared ministries and raising funds for our annual budget. As a team, we beat our goal of \$110,000 in 100 hours and raised over \$111,445 so far and still counting! Thank you to everyone in our pRAISE RLC campaign this year. RLC is amazing because of you!

WORSHIP AT ROSEVILLE LUTHERAN
Regular Sunday Worship Times at 9:00 and 10:30 am

A SPIRIT-LED SUMMER

Marty Wyatt, Associate Pastor



I'm going to level with you all, it's always hard for me to start writing these Table articles. There is always so much going on, so much to point to, so much to say, it's hard to know where to begin! And so, with that, I start this one thinking about where we've been over the past few months and where we are going. As a community, we have been through a great deal of change and transition, and we will continue to feel that change and transition in this time. This isn't something to put judgment or value on, it is just a simple observation. Change stretches us and causes us to grow. It causes us to think differently and in new ways. One thing that we know for certain is that God walks through this change with us and the Holy Spirit will guide and lead us. All we have to do is make sure we are listening and attentive to where the Spirit is leading.

One of the many ways we can learn to be more attentive to the Spirit is through contemplative practices. This will be our theme for the Summer. Now some of you might be groaning thinking this is one of those way "out there" things, but stick with us, because I assure you, it's not! Contemplative practices are simply ways that help us all live a more grounded life, a life more focused on God. These practices can help us to turn back to God when the daily stresses of life-work, family, commitments, schedules, etc-become overwhelming. These practices help us to remain centered, faithful, and joyful. And, they are practices. There are some that you will connect with, and some you might not. I encourage you to give each one a chance though, to truly practice these forms of contemplation and to dive into our summer theme with us as we live into our call to be faithful people, led by the Holy Spirit in all the things that we do.

Finally, I commend to you the pages of this Table! Please do read about everything happening at RLC in the coming months. We often think that summer is a slower time around church, but it is definitely not! We have so many exciting things happening, and we want you to be a part of them all! So come! Show up! Be a part of this exciting community. Read and learn about everything going on this summer for children, youth, and their families. Learn about the exciting work of the Riverside Innovation Hub. And read about the course that you can sign up for this fall called JUSTmove. These are just a few examples of the wonderful things you'll find in this issue of the Table. There is so much going on at Roseville Lutheran, and this is an exciting time. I can't wait to see all of you this summer and in the fall at these and other events, and at worship and in the community, everywhere we seek to Love God, our neighbor, and be a Community United by Grace.

In Christ,

Pastor Marty

FINDING THE HOLY IN EVERY DAY

Jenna Baccam, Director of Children, Family, and Youth Ministry

Often, we tend to remember God in the moments that are 'big'. We see God when we are on a beautiful mountaintop, when we finally get the job we have been hoping for, when we are spending time with family and friends. But what about the other moments? The ones where God doesn't seem to be present at all. The ones where we feel helpless, lonely, and destroyed. Where is God in those moments? How do we seek God in those moments?



When we are in the darkest times of our lives, it is a pretty hard place to see the holy in everyday life. There don't seem to be any 'big' moments surrounding us during these times, and the ones that do are so negative it becomes hard to speak it aloud. So how do we see the holy when these moments seem to be few and far between?

We look for the holy moments that are small. It is going to take more work, but looking for these small holy moments is going to help us get out of these dark places. And they are anything but small. A text from a friend you haven't talked to in awhile. A beautiful sunset you're watching from your house. The way the grass and trees seem to light up when it rains. Driving home from work and hitting every single green light. These moments can be holy too. We just need to start recognizing them, and recognizing their significance in our lives.

SAVE THE DATE: SUNDAY, SEPT. 8 ONE WORSHIP/WELCOME WEEKEND

RLC Fall Kick-Off Sunday

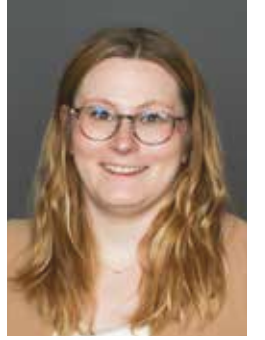
10:00 am ONE Worship Service

Save the Date for Welcome Weekend: Sunday, September 8th!

We will have **ONE Worship at 10:00 am** as we get ready for another wonderful school year and all the things that fall brings. More information will come later this summer, but be sure to put September 8th on your calendar now so you don't miss it!

LIFE IS LIKE A LABYRINTH

Tori Kraus, Pastor of Youth and Young Adult Engagement



For the last year, I have been journeying alongside the folks in the spiritual and contemplative practices group. We have learned a variety of spiritual practices, many being rooted in ancient traditions. One of the most recent practices we have done was the labyrinth. A labyrinth only has one way in and one way out with many twists and turns leading you to the center, and then back out again. Before you enter the labyrinth you can ask God a question or set your intention, then you walk, opening yourself up to receive what God is saying to you and where God is leading you.

What I learned by doing this particular practice that day is that the labyrinth is a lot like life. You enter into it with maybe an expectation or a wondering, and you walk. Going through many twists and turns. Thinking you are on one path but finding your way onto another. Needing to slow for others, or turn to let someone else pass. There is no reward for how fast or slow you complete it, or even if you complete it. The beauty of the labyrinth is in the journey and how God appears to you throughout it.

Our summer series (p.1) is to highlight this and practice paying attention to the ways God already appears to us. How God is already at work in the world, at Roseville Lutheran Church, and in our own lives. To take a moment from our goal oriented culture of always moving on to the next thing, and to stop and consider a new or different perspective on life and on prayer. In the book *Everyday Contemplative: The Way of Prayerful Living*, the author writes "approaching prayer and life differently with a posture of receptivity that allows you to become more open, available, and responsive to the recreating work of God's Spirit in your life and in the world."

I invite you to approach this summer with a posture of receptivity, allowing you to see the journey you are on, how God meets you in it, and how to act in joining the work of God's Spirit in the world.

Pastor Tori

A COMMUNITY UNITED BY GRACE

CONTEMPLATIVE AND SPIRITUAL PRAYER PRACTICES GRANT

Pastor Tori Kraus

Last summer Roseville Lutheran Church applied for and became a part of the second iteration of the two year Contemplative Communities for Spiritual Transformation program, a grant opportunity through St. Catherine University funded by a Lilly Endowment Inc. grant. This program invites congregations to come together to explore mindful prayer and spirituality practices. Within groups, participants and congregants are called to reflect on these faith experiences and support each other's spiritual journeys to enhance mutual learning. This program works with congregations to slow down and cultivate a deeper awareness of oneself, others, and God.

For the last year, RLC has had the opportunity to form a small group of about fifteen individuals to explore mindful prayer, and contemplative and spiritual practices with guidance and leadership from a spiritual director provided to us by St. Catherine University. This spiritual director has guided us through a variety of contemplative practices where we can hear, more clearly, the voice of God, which allows us and our community to be drawn closer to God to work for healing in the world.

Here are reflections from two individuals who have participated in our small group over the course of the year:

"I registered for Contemplative Practices because I was interested in elevating my prayer time. The commitment is 2 hours a month. We are introduced to a new practice each month and are given an opportunity to use the new practice during our session."

"What I have liked in these last 6 months has been the opportunity to slow down and intentionally focus on communicating with God. For me, by communicating, I mean more quiet listening in God's presence, and less talking. We live in noisy stressful times. I have found joy and peace in some of these practices that can soften the daily noise. I can rest knowing I am a beloved child of God."

- Kathy Miller

"Being in the contemplative practices group has been an extremely rewarding experience. Every month we have looked at a different spiritual practice. I have grown in my understanding of prayer during these evenings. I have discovered the value of repetition in prayer and also the power of prayer while on walks and in nature. I am looking forward to growing even more in the coming year."

- Nancy Brown

RIVERSIDE INNOVATION HUB: BECOMING A VITAL NEIGHBOR

The Riverside Innovation Hub Team continues the work of becoming a vital neighbor to our immediate community. We are in a phase called Accompaniment: walking alongside our neighbors to better know and understand them. Often churches try to connect with people through new programs or services. However, Accompaniment invites our team to deeply listen to our neighbors and their experiences and to connect with our neighbors by deepening relationships.

Our team used several ways to understand who our neighbors are in the Roseville community. Demographic data helped us understand some of the characteristics of the people living in our neighborhood; these characteristics included race, age, (dis)ability, ethnicity, family structures, and economics. We took a prayer ride together through our neighborhood to identify areas of consolation and desolation. We considered how one person might see desolation in an area, but another person, with different experience might see consolation. We are attending listening posts to hear community conversations first hand. Listening posts include school board meetings, library events, even coffee shops or local bars. What are people talking about? What is important to them? Where are they feeling despair? Finally, we are starting one-to-ones: conversations with individuals to hear their hopes and concerns, for themselves and our shared community.

The RIH team invites you to be part of this Accompaniment work too! Have you had a recent conversation with someone in our community that you would like to share with the team? Do you have someone you think should be part of our accompaniment one on one conversations? Is there a listening post you go to that we could attend with you? We invite and encourage everyone to be part of this humbling and exciting work.

BACKGROUND ABOUT RIVERSIDE INNOVATION HUB and THE PUBLIC CHURCH FRAMEWORK

In the fall of 2023, Roseville Lutheran Church joined the Riverside Innovation Hub (RIH), a learning cohort at Augsburg's Christensen Center for Vocation, to pursue God's call to become a vital neighbor in our community. RIH uses the Public Church Framework, developed by Augsburg University, as a structured approach to how a church can engage with its neighborhood and community more meaningfully.

The Public Church Framework has four phases that we cycle through, outlined below. While it can appear that the phases are distinct and separate, they often flow into one another and are less rigidly defined in real life than they are on paper. The phases are:

- 1. ACCOMPANIMENT:** This is about walking alongside others in the community, listening to their stories, and sharing experiences. It's not about imposing our views, rather it is understanding what the community is experiencing and how the church can walk alongside those experiences.
- 2. INTERPRETATION:** After listening, the church interprets what it has learned. This means looking at the information through the lens of our faith, our values, and the teachings of the Bible to understand how we can respond as a community of believers.

3. DISCERNMENT: This step involves making thoughtful decisions about how to act on what we've learned and interpreted. It's about prayerfully considering where God is leading our church in the context of the community's needs.

4. PROCLAMATION: Finally, this is about sharing God's love and our church's mission through our actions and words. It means publicly living out our faith and the decisions we've made based on our accompaniment, interpretation, and discernment.

In practice, using the Public Church Framework at Roseville Lutheran Church is foremost about developing relationships with people and other organizations. However, it can inform current and future initiatives like our community outreach programs, partnerships with local schools or organizations or hosting of community forums. Each step of the framework helps the church's actions to be thoughtful, informed, and aligned with both our faith and the experiences of the community around us.

Interested in learning more? Reach out to our team members: Alice Neve, Leon Neve, Kris Olsen, Mary Peterson, Trupti Storlie, Tanner Wyatt, Pastor Marty Wyatt.



RLC ANNUAL MEETING: SUNDAY, AUG. 25

- ONE Worship at 9:00 am
- Annual Meeting at 10:00 am
- Report Deadline: July 15

Be sure to mark your calendars and plan to attend the annual meeting of Roseville Lutheran Church on **Sunday, August 25, 2024**. We'll take care of important business together, like approving the budget for the next fiscal year, voting for new council members, and other important items. We will also only have one worship service that morning, at 9:00 am, followed by the meeting, which will be held in the Worship Center.

The **Annual Report Deadline is 12:00 noon, Monday, July 15**. Please send reports to Daniel at dpederson@rosevillelutheran.org, so they may be compiled and provided to the congregation in a timely manner.

RLC Lay Leaders and Staff

Congregation Council

Val Velde, President
Rebecca Field, President *Pro Tem*
Erik Storlie, President Elect
Jim Stark, Vice President
Nancy Brown
Linda Werner
Pam McCulloch
Andrew Olson
Sarah Richter
Karen Rodgers

Project Team Chairs

Sharon Swiglo, Adult Ed
Kris Olsen, Mission and Outreach
Julie Henry, Organ Project Team Co-Chair
Scott Henry, Organ Project Team Co-Chair
KJ Bach, Lively Landscapers
Sue Metzger, Design Project Team

Endowment Committee

Mike Dolan, Chair
Bill Metzger
Audra Engebretson
Dave Risinger
Carrie Hefte-Hanton
Lou Tschudy
Greg Johnson
Kevin Peterson
Linda Nelson

Nominating Committee

Dave Werner
Jan Abell
Beth Jacobson
Kevin Miller

Finance Committee

Nick Velde
Merle Gaedy
Gayle Gedstad

Pastors

Eric Leshner, Interim Senior Pastor
Marty Wyatt, Associate Pastor
Tori Kraus, Pastor of Youth/Young Adult Engagement
Rolf Olson, Visitation Pastor

Music Ministry

John Helgen, Director
Lori Haaland, Handbell Choirs
Lucas Carlson, Worship Leader

Hospitality Ministry

Will Flores, Hospitality Coordinator

Children's Ministry

Jenna Baccam, Dir. of Children's and Family Ministry

Youth and Young Adult Ministry

Tori Kraus, Pastor of Youth/Young Adult Engagement

RLC Prechool and Child Care Ministry

Sher Noot, Director
Rachel Anderson, Preschool Teacher
Karen Sundeen, Preschool Assistant Teacher
Rachel Nentwig, Preschool Assistant Teacher
Charlotte Kasal, Preschool Aide
Laurie Miller-Hedeen, Childcare Teacher
Krystina Eliason, Childcare Teacher
Angie Koeck, Childcare Teacher

Ministry Support Staff

Dave Booms, Church Administrator
Christine Burbach, Director of Finance
Open, Director of Development
Daniel Pederson, Communications Manager
Nick Clausen, Lead Live Stream Tech
Mary Johnson, Administrative Assistant
Tammy Swanson, Financial Assistant

Facilities Ministry

Bob Zismer, Campus Lead
Arlen Rystrom, Building Engineer
Dustin "Bean" McDonough, Custodian
Open, Custodian

A COMMUNITY
UNITED BY GRACE

SUMMER PSALMS

ADULT EDUCATION IN JUNE

Adult Ed opportunities are held at 10:00 am most Sundays in the Social Hall. All are welcome to bring a cup of coffee and engage with the topic, which in June is "Summer Psalms." We are thankful to have these leaders discussing their chosen Psalm reading with the group.

- June 2 Psalm 25 with Dot Probst
- June 9 Psalm 133 with Chris Gehrz
- June 16 Psalm 20 with Kelli Hofmeister
- June 23 Psalm 42 with Jeff Johnson

Please note: there will be no regular Adult Ed in July or August.

BECAUSE OF YOU 1,683 KIDS ARE FED

April Feed My Starving Children MobilePack

In April, RLC partnered with Incarnation Lutheran's "All Hands on Hope" MobilePack with Feed My Starving Children, and because of you who packed, prayed or made a donation, 1,683 kids will be fed for a year. Here are a few numbers from the MobilePack:



- 12 packing shifts across 5 days.
- 79 pallets of 36 boxes each wrapped and loaded into the FMSC trailers
- 2,232 volunteers from local churches, Scout troupes, Rotary Clubs, and a variety of other organizations.
- 2,844 boxes labeled, assembled & packed
- 102,384 MannaPack bags labeled and filled with nutritious ingredients
- 614,304 meals ready for shipment around the world

Thanks to Will Flores, RLC's Hospitality Director, for preparing two meals for the FMSC staff and Specialized Volunteers who worked over meal time. Thanks to an anonymous donor for funding these two meals. Thanks to KJ Bach, Kathy Miller, and Rich and Julie Wendland for working through many of the shifts as Specialized Volunteers. Thanks to Incarnation Lutheran's MobilePack Action Team for many hours of preparing and managing the MobilePack for the 17th year with FMSC. Lastly, Thank YOU for packing, praying and supporting this amazing ministry and all for just a couple of hours of your time! Stay tuned for the 2025 MobilePack.

JUST MOVE

RLC to Host Joe Davis and Dave Scherer
6:30 - 8:30 pm, Mondays • September 30 - November 4

Excitement and joy are building, new community collaborations are growing, and RLC's racial justice ONAM committee (Our Neighbors and Me) is busy preparing for JUSTMove, an unforgettable experience on six Monday evenings this fall!

As anti-racism trainings go, JUST Move is definitely NOT the "Same old, same old...". Even if you have been part of other anti-racist trainings in the past, you have not experienced Joe Davis and Dave Scherer, the presenters and creators of JUSTMove.



Joe is a nationally-known artist and speaker based in Minneapolis. He employs poetry, music, theatre and dance to shape culture and thinking. His work has been featured on BET, CNN and VH1, as front man of emerging soul funk band, The Poetic Diaspora, and he has spoken at hundreds of high schools and universities. He has been artist-in-residence at Luther Seminary where he earned a Masters of Theology in the Arts.

Dave is a performer, teacher, author, trainer and facilitator who helps people build bridges that make a difference. David's reconciliation work has taken him to Bosnia, El Salvador, Haiti and other countries. He teaches Graduate School Intercultural Competence courses, is a Qualified Administrator in the Intercultural Development Inventory (IDI) and has founded multiple youth leadership development programs.

JUSTMove is a racial justice initiative that is live and in person. It is coming to Roseville as a joint venture sponsored by RLC, St. Timothy's Lutheran Church, and St. Michael's Lutheran Church. Invitations have gone out to other area churches, and we are looking forward to this shared community experience where we deepen our Christian commitment to "Love God, Love Our Neighbor."

JUSTMove would not be happening without the generous support of RLC's Endowment Fund, a grant from the Roseville Area Community Foundation, and financial support from St Michael's Lutheran and St Timothy Lutheran Churches. Together, the Roseville community will gather at RLC to gain the necessary tools for building bridges across cultural differences and to "JUSTMove" ALL our hearts and minds. Appropriate for anyone ages 12 to 101!.

Save these Monday nights this fall - 6:30 to 8:30 P.M.

September 30th, October 7th, 14th, 28th, November 4th and 11th

(Online registration will be available later this summer -- watch for it!)

MEET CHRISTINE BURBACH

RLC's New Director of Finance



I would like to introduce myself to the congregation of Roseville Lutheran Church. I am Christine Burbach, and I am the new Finance Director as of May 6, 2024. I am beyond blessed and feel very fortunate to be selected for this role, and I am very excited for myself and my children to be here.

I have a degree in Accounting from Metropolitan State University in St Paul, MN, an MBA in management at Hamline University. I worked as an Accountant/Financial Analyst for a few different companies before ending up at Polaris as a Senior Financial Analyst, in Osceola, WI. I decided to switch careers and accepted a role at OTT-Inc. in Roseville as a Senior Consultant. Working with accounting clients of Microsoft Dynamics GP, I supported the accounting software, and trained new clients on the system.

I grew up in Blaine, MN and graduated from Park Center High School. My husband and I moved to New Richmond, WI, to be closer to my mom and stepdad after we had twins. Unfortunately, in March 2022, my husband Jon passed away unexpectedly. I decided to move back to Minnesota to be closer to family and friends, as life drastically changed as a single parent. I took a leave of absence from working for 2 years to help Eva and Landon, and myself, with the grieving and healing process.

Now we live in Andover, Eva and Landon are 10 years old, finishing up 4th grade, and are doing very well. Landon is an excellent soccer player and will start competitive traveling soccer this summer, and Eva is an excellent gymnast but has recently begun horse back riding and has a passion for that.

I feel as there is a reason that I am in this role and this community. I am excited to form relationships within the congregation, and for the opportunities available for my children.



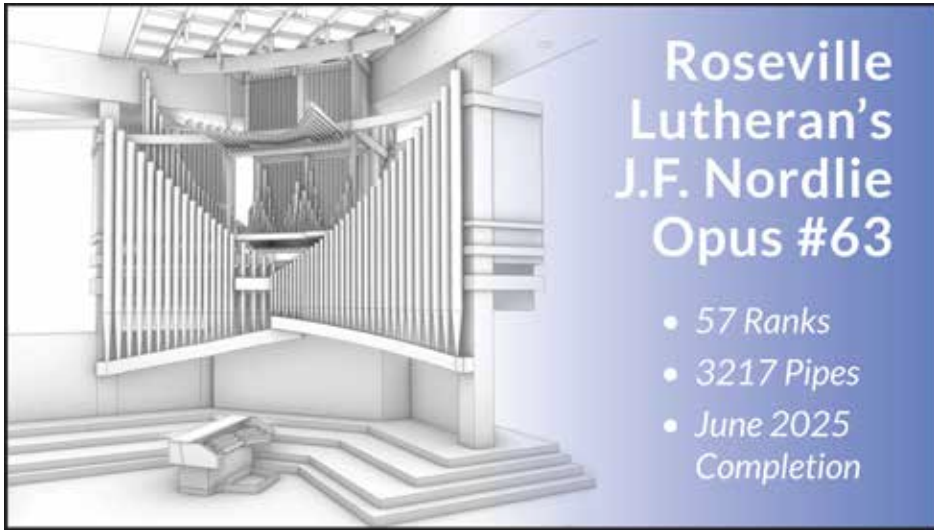
LIVELY LANDSCAPERS: DID YOU KNOW...

KJ Bach

As the Lively Landscapers get ready for the 2024 gardening season, here are a few 'Did You Know...' facts about our church grounds:

1. The Lively Landscapers was established as a result of COVID in the Spring of 2020. A few of us needed something to do outside and with others. With the church building closed to the general public, our campus was looking forlorn and the landscaping was in need of a 'make-over'.
2. There are 3 rain gardens and 13 garden areas around the campus... all cared for by the Lively Landscapers. This includes the large slope to the north of the Worship Center and the large area south of the Activity Center, along with the Child Care House gardens, and all the parking lot islands.
3. In 4 summers, several overgrown Arborvitae and Juniper have been removed, making space for flowering perennials and native grasses that are drought tolerant and give the campus color and texture interest. All of this done with volunteers and their own tools and trucks.
4. Many of the new plantings have been shared from RLC members' gardens, saving hundreds of dollars.
5. The lawns are mowed and trimmed by volunteer Mike Dolan since 2023, which takes 5-6 hours per week and saves 100's of dollars. He also helps maintain the large lawnmower & trimmer. Dave Werner and he help with some of the tougher landscaping projects, e.g. tree removal.
6. Several of the South Parking Lot islands renovation with grasses and drought tolerant plantings were funded and completed as Boy Scout Eagle Scout projects, saving the backs and knees of the Lively Landscapers!
7. The Easter Garden potted plants from the past 3 years are repurposed & transplanted into various gardens around RLC giving us many more years of blooming and enhancing our Church Campus.
8. The City of Roseville partners with the Lively Landscapers in maintaining the 3 rain gardens along Roselawn Ave.
9. There are several community groups that meet on a regular basis at RLC. The landscaping makes our church a welcoming location for them as well as all of the church neighbors that pass by and through the parking lots. Our church campus is truly a community asset!
10. There are LOTS of projects on the Lively Landscapers "To Do" list. Give a shout-out to KJ Bach (k-j-o@msn.com) or Julie Wendland (wendland8120@msn.com) to get plugged into the Lively Landscapers. Give us an hour or 2 per month to get your hands dirty and to help care for our welcoming church home.





PIPE ORGAN PROJECT UPDATE

Julie Henry

The long-awaited design of RLC’s new pipe organ was revealed at the Meet the Pipe Organ Builder presentation on April 8, 2024. Joseph Brown, President and Owner of J.F. Nordlie Pipe Organ Company explained the vision for our organ and shared the architectural drawings of the new instrument. You can view the entire presentation at www.rosevillelutheran.org/organ.

RLC: A DESTINATION VENUE

Blending the Holtkamp organ and the best pipes from our existing organ honors the design and history of both organs. It will result in a unique new instrument that will be dynamic, versatile, exciting to play, inspiring to hear, and musically, liturgically, artistically and architecturally complimentary to RLC’s worship center. RLC’s new organ will be a destination venue for guest organists and musicians. It will provide many new possibilities for enhancing our music ministry and increasing community involvement.

OPPORTUNITIES MAY INCLUDE:

- National Lutheran Choir Choral Tune-up: RLC hosted this 400-participant event in January. We hope to host it again in January 2025 and look forward to being able to use the new organ in 2026.
- The Metropolitan Symphony has indicated interest in an orchestra/organ event with the Saint-Saëns Organ Symphony (Symphony No. 3).
- Mid-day organ recitals - RLC’s project has received much attention from the regional organ community and we’d like to host short recitals featuring various local organists on a regular basis.
- Educational opportunities for high school/college students interested in playing the pipe organ.
- The new organ will be a draw for other guest choirs, musicians and special events.

MOVING PIPES THIS SUMMER

A group of RLC volunteers, the Pipe Organ Transplant Team, will assist the J.F. Nordlie crew with uninstalling, packing, loading and unloading organ pipes. This group helped Nordlie remove 85 pipes (the Contre Trompette 16’ rank) from our organ in May; those pipes were sent to Ohio to be refurbished. The group will also assist in Mountain Brook, Alabama June 10-16 to remove and pack up the Holtkamp organ. Each volunteer is donating their time, energy and paying their own expenses as a contribution to the new organ. The team assisting with organ removal are: KJ Bach, John Helgen, Scott and Julie Henry, Julie and Rich Wendland, Dave and Linda Werner, Jan Abell and Erik Wolhowe.

RLC REPRESENTED AT RACIAL JUSTICE ASSEMBLY

Heather Awad

Heather Awad, member of the RLC Racial Justice Team, participated in an assembly of the group recently re-named “The Association of White Lutherans for Racial Justice.” The group, with members from across the U.S., gathered in Minneapolis March 1-3, to organize for racial justice in the church and society. This group is one of six ethnic-specific associations of the ELCA.

The association’s purpose, according to its bylaws, is to “dismantle racism, white privilege, and white power by recognizing and confessing our individual and corporate sin and addressing institutional racism in the church and society.” - Taken from an article in Living Lutheran, an ELCA magazine (www.livinglutheran.org).

The heart of the assembly was a pilgrimage to George Floyd Square. Association President, Shari Seifert (RLC Adult Ed speaker in April), moderated a panel discussion at nearby Calvary Lutheran. Community leaders told how after the murder of George Floyd in 2020, they worked to support each other. Now they tell visitors to experience the memorial, but then to go home and make a difference in their own communities.

Jenny Leenay, a community leader, fashion designer, and organizer, told the assembly, “We already have a Savior. We don’t need other saviors. We need resources and opportunities. We need people who want to make a friend, to know our names, people who want to have a conversation.”



Once the Alabama Holtkamp organ is packed up, it will be trucked to Nordlie’s shop in Sioux Falls. There, five more RLC Transplant Volunteers will help unload the truck. Those volunteers are Jeff Bowar, and three generations of the Rosti family: Jim and Lorene, their son Scott and granddaughter Rane.

Stay tuned for more volunteer opportunities in January 2025 when our organ is totally removed, and again in March 2025 when the truck with the new organ pulls up outside RLC’s doors!

RLC Youth Benefit from the Organ Project!

AirBnB gift cards were purchased through RLC’s youth gift card program to pay for housing for the Nordlie craftsmen and RLC volunteers while working in Alabama. This resulted in **\$285** going to the RLC youth fund to help pay for camp, events and activities. **It’s a WIN-WIN!**

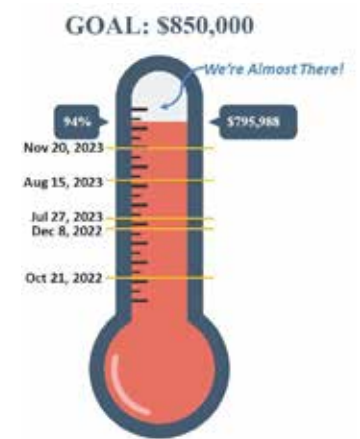
PROJECT FUNDING

The response to the pipe organ project has been overwhelming and inspiring with \$795,988 committed as of April 5, 2024 - 94% of the \$850,000 project target. That represents donations from 146 households and includes \$278 from the Pennies for Pipes coin pipe in the commons. The organ fund has over \$367,000 in the bank and cash flow is good through this year.

SO CLOSE - JUST \$54,000 TO GO!

Now is the time to help support this legacy project and push it over the finish line! Every gift, regardless of its size, makes a difference.

Intent to Give forms are available by the organ poster in the Commons or you can complete the form online at rosevillelutheran.org/organ/. If you’d like to make a charitable donation using a distribution from your IRA or have appreciated assets you’d like to donate to the organ fund, please call the RLC Finance Office. They will be happy to answer your questions and assist you.



HOW TO FULFILL YOUR INTENT TO GIVE

- For 2024 gifts: Please send your donation designated to the Organ Fund. To help with cash flow, please consider making quarterly payments.
- For 2025 gifts: RLC will continue to make monthly payments of \$30,000 to the organ builder with a final payment in June 2025. Please consider making your donation early in 2025 and complete your donation before June 1, 2025 to help with cash flow.
- If you have questions or have forgotten the amount of your Intent to Give, please contact the RLC Finance Office.

Thank you RLC for your generosity and on-going support for the beautiful new organ that will inspire and uplift our congregation for generations to come!

To learn more about this project, visit the Organ Project webpage at RosevilleLutheran.org/organ. Scroll to the bottom of the webpage to access several videos and a thorough FAQ section.

Members of the project team are KJ Bach, John Helgen, Julie and Scott Henry, Erik Storlie, Dorothy Tostengard and organ consultant Dr. Greg Peterson.

THANKS TO OUR MUSICIANS!

John Helgen, Director

Thanks to the many musicians of RLC for all their participation, dedication and good work in our worship services this year - recently this spring, through Lent and Holy Week: Ash Wednesday, Wednesday mid-week, Palm Sunday, Maundy Thursday, Good Friday, our Easter Sunday celebrations, April 28 with RLC Jazz, Bell Weekend on May 5 - over 30 worship services! During this time period, music was presented and led by ensembles comprising over 100 musicians - RLC Choir, RLC Kids Choir, RLC Brass Ensemble, RLC Jazz, Jubilate Bell Choir, Bells of Praise, Joyful Ringers, 10:30 Worship Band, 10:30 AM Choir, Acoustic Band, as well as cantors, soloists, accompanists, and other ensembles. Thanks to our facility caretakers Shelton Ingram, Dustin McDonough, and Bob Zismer, and a huge shout-out to our musician crews who set up, tear down, and clean up our worship space for many services and concerts. Thanks to Lori Haaland and Lucas Carlson on the music staff, to Joe Husby and Charles Scott for serving as volunteer ensemble leaders, and to our technical and media crew: Jeff Bowar, Jeff Johnson, Jim May, Nick Clausen, Lucas Carlson, Scout Mason, and Casey Eakins.



SIGN UP NOW FOR SUMMER MUSIC - MUSICIANS NEEDED!

Summer is a great time to share your musical gifts with your RLC family and friends. The RLC choirs and ensembles will be taking a summer break from regular rehearsing and performing, therefore vocal and instrumental solos and ensembles are needed for use in worship services starting in June. Call your friends, comrades, co-workers, neighbors, acquaintances, and family members, and make a plan! Check available dates with John Helgen at 651-288-4236 or jhelgen@rosevillelutheran.org

CONTEMPLATION AND CONNECTION

Sher Noot, Director of RLC
Preschool and Child Care House

Contemplation: An act of considering with attention (According to Merriam Webster Dictionary).

Connection: Connection is the sense of closeness and belongingness a person can experience when having supportive relationships with those around them. Connection is when two or more people interact with each other and each person feels valued, seen, and heard. (November 15, 2021 Psych Central).

We often talk to our little humans about how sometimes we have to THINK really hard about something. It's the thinking or contemplating that makes our brains GROW! I don't know that all the thinking and contemplating made MY brain grow this year, but it definitely made our CONNECTIONS with the RLC community GROW!

RLC Preschool and Childcare connections with Pastors Marty and Tori became even stronger, through our twice monthly chapel times. Our relationship with Jenna and Children, Youth and Families Ministries grew in amazing ways, from partnering on the Good Friday Family Services, to hosting a joint Earth Day Extravaganza with the Harriet Alexander Nature Center. (photos below)

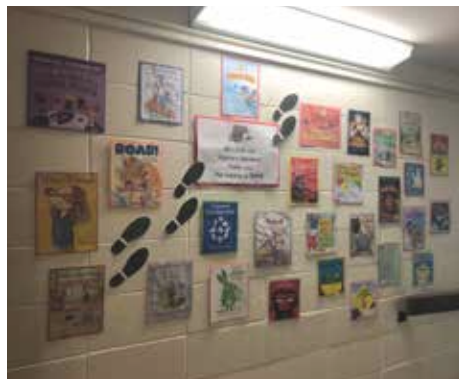


Our connection with John and his music at our Christmas Program, and now participating in a twice monthly music activity with the preschoolers was enjoyed by all. In fact, it was hard to tell who was having more fun, John or the kiddos!



For the first time RLC Preschool invited the Lively Landscapers to help plant seeds in little take home pots as a part of our spring gardening theme. The one on one connections made between the Lively Landscapers and the preschoolers was amazing! We're happy to say that this will become an annual event. (photos above)

We had a stronger preschool family presence in our school as well. We invited preschool family "grown-ups" to join us as Mystery Readers through the spring months. The Mystery Readers read us over 25+ books! We also hosted two Grown Ups and Goodies events in which a special grown up was able to share in their "littles" day. (photo, right)



Contemplation and connection, support and belonging, I, we are so grateful for this time of togetherness with the RLC community!

Vacation Bible School
June 24-28
at RLC

Registration Deadline is June 3 www.rosevillelutheran.org/vbs

We welcome kids from 3 years old through the completion of 4th grade

VBS meets from 9:00 am - 12 noon Monday - Friday

Have fun and learn stories from the Old and New Testament!

VBS 2024: CAMP FIRELIGHT

9:00 am - 12:00 pm, June 24-28
Please Register by June 3

Our annual VBS is coming up at the end of June! Join us June 24-28 from 9:00 am - 12:00 noon each day to focus on our theme of Camp Firelight! Kids and volunteers will learn about how we can trust God in any situation and through any challenges we face. We will have things like crafts, songs, science experiments, field games, and more! You won't want to miss it! Registration is online at www.rosevillelutheran.org/vbs and will close on June 3rd!

CHILDREN'S MINISTRY UPDATE

Jenna Baccam, Director of Children, Family, and Youth Ministry

HARRIET-ALEXANDER NATURE CENTER

This past April over Earth Day weekend, we hosted the Harriet-Alexander Nature Center (HANC) for an afternoon of learning, meeting new animals, and seeing their different adaptations. We had over 60 people come from the congregation, the community, and our preschool program! Thank you to everyone who attended and for all the kids who were so eager to learn! We are hoping to bring them back next year for another celebration of God's creation!



CAMP WAPO:

We are so excited to be partnering with Camp Wapo again this summer and sending almost 50 campers to camp! Camp Wapo will be July 28 - August 2, with our Seeds weekend being August 2-4. Camp Wapo is a special place for all these kiddos and we are so excited to add more to that list!

BLESSING OF THE BICYCLES: SUNDAY, JUNE 9TH

Our Blessing of the Bicycles event is a time for kids, adults, families, whoever, to bring their bikes into the worship center and we will give them a special blessing as summer starts! This year, we will be closing the upper parking lot in between services for everyone to ride around and enjoy the start to their summers! It's going to be such a fun morning with one another!



S'MORE SUMMER - AUGUST 16

Last summer, we held our first S'more Summer event. This was a time for kids and their families to come together around a bonfire and make s'mores and play at the park! A lot of people came, and we would like to extend that invitation to the rest of the congregation this year! All are welcome to join us for our S'more Summer event happening on Friday, August 16th. This will be out at the bonfire near the baseball fields. It's a great time for the community to come together, to celebrate the end of summer, and eat delicious s'mores!



UPCOMING EVENTS FOR RLC PRESCHOOL/CHILD CARE

- **Parkway Pizza Fundraiser** - final day for the 2023-2024 school year is on Tuesday, June 25th.
- **Enrollment is still open for the 2024-2025 school year.** We have openings in our Mixed Age classes. Age 3 years old (by September 1st) to kindergarten. Student must be potty trained, no diapers or pull ups allowed. We offer 2, 3 and 5 day options. Hours available are 9:00 am - 12:00 pm; 9:00 am - 1:00 pm; or full day 9:00 am - 3:00 pm. For more information or to schedule a tour, please contact Sher Noot, Director of RLC Preschool and Childcare. snoot@rosevillelutheran.org

PRAYER PARTNERS/POSTCARDS

Support Our Students This Summer!

We are asking for your prayers and support for our children and youth attending Camp Wapo and the ELCA National Youth Gathering this summer. We are looking for 42 people to be a prayer partner. This is a great way to support our children and youth! Those who says to being a prayer partner will be matched with a child and will be asked to pray for that student while they are away at camp. For those matched with students attending "youth camp" over July 28 - August 2, we ask that you also write them a postcard!



Pastor Tori will have more information for you and can answer any questions. She will also provide you with some prayers, and the postcards. Please let her know if you are interested in being a prayer partner this summer! Email her at tkraus@rosevillelutheran.org.



LUTHERAN NIGHT AT THE TWINS

Take Me Out to the Ball Game on August 12!

Join RLC friends as we head to Target Field to cheer on our Minnesota Twins for Lutheran Night on Monday, August 12 at 6:40 pm. This night would include the opportunity to help sing the national anthem. We will be sitting in the left field bleachers and so we have easy access to the ramp that would take us out onto the field to sing the national anthem. Tickets are \$35 per adult (18+) and \$15 per child (under 18). **Please sign up by Sunday, July 21.** Contact Pastor Tori tkraus@rosevillelutheran.org if you have any questions!



CONFIRMATION LEADERS NEEDED

2024-2025 Small Group Leaders

Our Confirmation program continues to grow! With this growing, we are in need of more Confirmation Small Group Leaders for our 2024-2025 Confirmation year. This program would not be possible without our small group leaders!

The time commitment would be weekly on Wednesday evenings from 6:45-8:00 pm. We meet weekly in large and small groups with other opportunities for intentional small group time. Confirmation Small Group Leaders are supported directly throughout the year by Pastor Tori and are given outlines each week for leading the small group.

Anyone who is 16 and older, or already confirmed are invited to be a Confirmation Small Group Leader. Current small group leaders have said that it is meaningful to get to know our youth in 7th grade, and watch them grow as individuals and in their faith. Registration opens on August 1. If you are interested in being a small group leader or would like more information, please reach out to Pastor Tori at tkraus@rosevillelutheran.org.

PARTICIPATE IN PRIDE WITH RLC

Walk in the Parade, or Work the Booth, June 29-30

June is Pride month and there is no better way to celebrate than to join the festivities in Downtown Minneapolis and in Loring Park! June 29-30, RLC will be participating in the Twin Cities Area Pride Festival by walking in the parade with other area Reconciling in Christ (RIC) churches on Sunday, June 30. We also might have a booth in Loring Park. (This is unknown at the time of printing). If you would like to walk with us in the parade or want to volunteer at the booth, please contact Pastor Marty at mwyatt@rosevillelutheran.org or call the church office at 651-487-7752 x224



RECONCILING in CHRIST

RLC MEN'S BREAKFAST GROUP

COFFEE AND CONVERSATION
8:30 AM, 1ST AND 3RD SATURDAYS

We continue to meet for bagels, coffee, and conversation at 8:30 am on the first and third Saturdays each month. Currently we are working our way through the Gospel According to Luke. Please join us! For more information contact Mike Dolan msdolan01@hotmail.com or Pastor Rolf Olson rolson@rosevillelutheran.org.

IMPORTANT FALL CYF DATES

Mark your calendars now with these important dates and events in our Children, Youth, and Family Ministry area at RLC.

- **August 1** - Confirmation Registration and Small Group Leader Registration Opens
- **September 11** - CRASH Course
- **September 15** - Beginning of RLC Kids
- **September 18** - Confirmation Leader Training
- **September 25** - Confirmation Parent/Student Orientation



OKTOBERFEST VOLUNTEERS!

HELP NEEDED FOR SEPTEMBER 27 EVENT

We are looking for a fine few folks to come together and help coordinate the efforts for this year's Oktoberfest, planned for Friday, September 27 from 5:00 - 8:00 pm. We need a team of dedicated volunteers in order to make this community event a reality. If you are excited about community, fellowship, and Oktoberfest, please contact Pastor Eric at elesher@rosevillelutheran.org to let him know that you're interested in serving on this team.

RLC CALENDAR HIGHLIGHTS

Find More Information at:
www.rosevillelutheran.org
(Or see listed pages in this TABLE)

Sunday, June 2

Adult Ed: Summer Psalms (p.4)

Monday, June 3

VBS Registration Deadline (p.4)

Sunday, June 9

Adult Ed: Summer Psalms (p.4)
Blessing of the Bikes (p.6)

Sunday, June 16

Adult Ed: Summer Psalms (p.4)

Sunday, June 23

Adult Ed: Summer Psalms (p.4)

June 24-28

Vacation Bible School (p.6)

June 29-30

Pride Festival/Parade (p.7)

July 13-16, 16-20

ELCA Youth Gathering
in New Orleans

Monday, July 15 at 12:00 noon

Annual Report Deadline (p.3)

July 28 - August 2

Youth at Camp Wapo

Monday, August 1

Confirmation Registration (p.7)

August 2-4

Youth at Seeds Camp

Monday, August 12

Lutheran Night at the Twins (p.6)

Friday, August 16

S'more Summer (p.7)

Sunday, August 25

[RLC Annual Meeting](#) (p.3)

Sunday, September 8

[ONE Worship at 10:00 am](#)
Welcome Weekend! (p.2)

Sunday, September 15

RLC Kids Begins (p.7)

Wednesday, September 18

Confirmation Leaders (p.7)

Wednesday, September 25

Confirmation Orientation (p.7)

Friday, September 27

Oktoberfest (p.7)

Mondays from Sept. 30 - Nov. 4

Just Move (p.4)



NON-PROFIT ORG
U.S. POSTAGE
PAID
TWIN CITIES MN
PERMIT NO. 2168

Vacation Bible School June 24-28 at RLC

Registration
Deadline is
June 3



www.rosevillelutheran.org/vbs

SUNDAY
AUGUST 25
9 am WORSHIP
10 am MEETING

- VOTE ON NOMINEES
- 2024-2025 BUDGET
- OTHER BUSINESS

ROSEVILLE
LUTHERAN CHURCH
ANNUAL MEETING

* * REPORT DEADLINE IS JULY 15 * *



PASTOR'S BIBLE STUDY: SUMMER 2024
MONDAYS AT 10:00 am - ROOM 40

Everyday CONTEMPLATIVE



Pastor's Summer Bible Study Starts June 3

Volunteers Needed for Sept. 27 Oktoberfest

Please contact Pastor Eric at elesher@rosevillelutheran.org if you are interested in being on the team to help organize this fantastic community event. Save the date: Sept. 27 from 5:00 - 8:00 pm!

This summer, our Pastor's Bible Study meets at 10:00 am in Room 40 on Mondays, starting June 3. We will be exploring our summer theme of "Everyday Contemplative" based on L. Roger Owen's book.