

RLC 2023 - 2024 ANNUAL REPORT



BRINGING GOODNESS INTO A WORLD IN NEED OF GOOD NEWS

Eric Leshar, Interim Senior Pastor

In the book of Titus, Paul remarks, "He (Jesus) gave his life to free us from every kind of sin, to cleanse us, and to make us his very own people, totally committed to doing good deeds."

It has been a joy during my interim to watch this verse come to fruition among you. Your deeds as God's people bring goodness into a world in need of good news. From Sunday morning to Wednesday evening and throughout the week countless numbers of people both members and non-members find sanctuary in this space we know as Roseville Lutheran. God's goodness continues to thrive here. It is good to see.

So, I leave you with some thoughts that you can ponder in the year ahead. Some defining values that I hope will help you continue being the good congregation that you already are:

LOVING SERVICE: Following Jesus' model for us, our calling is to serve and not be served, and give our lives to set others free from whatever may weigh them down.

Your commitment to serving the Roseville community is inspiring and I encourage you to look for new ways to serve our community as it changes in the years ahead.

GRACIOUS HOSPITALITY: Jesus created space for those on the margins, accepting them as they are, and gave them space to be made new. As his body in this world, we offer this same gracious hospitality to all who walk with us.

You are just at the beginning of understanding what Reconciled in Christ means for you. Continue this journey. Do not forget about all the hard work that went into where you are now. Use the resources that Reconciling Works provides you as you grow in your awareness as a RIC congregation.

INSPIRING WORSHIP: Jesus taught that we worship in spirit and truth. Worship comforts, challenges and changes us. We recognize that all of us are comforted, challenged and changed in a different way when it comes to worship.

Your classical and contemporary worship services are led by wonderful musicians who help all of us give praise to God. But remember that worship is expressed in many ways and one way is not any better than the other. Worship should never be a war but always a celebration.

COMPASSIONATE JUSTICE: Old Testament prophets remind us that God demands compassion and holiness, as we remember that all of us are made in God's image and therefore all of us have equal access to the abundant life that God desires for this world. So, we strive to follow the words of the prophet Hosea, "Do justice, love compassion, walk humbly with your God."

I would encourage you to continue growing in your understanding of community action. Come to know the justice issues that people of Roseville struggle with every day. You can become the voice of those with no voice.

JOYFUL GENEROSITY: We seek to look at our world through eyes of abundance and desire to give as we have received. God's abundance includes our time, talent and treasure. In joy we give out of the abundance we have received.

Your **pRAISE** event and your Organ Project are inspiring. Your capacity to raise ministry revenue is one that I have not been part of prior to my interim here. But I also encourage you to continue in your support of all the ministries that are active at Roseville Lutheran. Your thing is not the main thing but all that we do together glorifies God.

Also be aware that soon you will need to address a capital campaign to raise funds necessary for a ministry structure that needs your attention. You should also be aware of the opportunity to relocate your childcare into your main building. This can help sustain your preschool and offer a portal of entry into your congregation for young families who now call Roseville home.

INTENTIONAL COMMUNITY: It is in our life together where we learn, grow, and form relationships that inspire us to be followers of Jesus. Hebrews 10:24-25 says, "And let us consider how to provoke one another to love and good deeds, not neglecting to meet together, as is the habit of some, but encouraging one another, and all the more as you see the Day approaching."

You have awesome events that bring you together as a congregation throughout the year. Keep up the good work. But you should also commit yourselves to small group ministry as well. We need not only members willing to participate but we also need members willing to lead small groups. I know it sounds like something else to do in an already busy world, but small group experiences can be enlightening and invigorating. They are worth your time. Especially in a larger congregation.

God be with you as you move closer to calling your next senior pastor. These are exciting but also uncertain times. Know that God is in it all and actively leading you forward into God's preferred future for you. So, pay attention!

Shalom,

Rev. Eric Leshar

Eric Leshar
Interim Senior Pastor

LOVE GOD • LOVE
YOUR NEIGHBOR



ROSEVILLE LUTHERAN ANNUAL MEETING

10:00 am, Sunday, August 25, 2024
Immediately Following 9:00 am Worship

GROUNDING IN THE PROMISE

Marty Wyatt, Associate Pastor

Grace and Peace to you all in the name of Jesus!

Looking back over the past year, it is hard to believe all that has transpired. Every year brings with it change and growth, challenges and fun, sorrow and joy, and we have had all of that this year as a community at Roseville Lutheran. It is a joy and honor to travel with you all as one of your pastors on this journey of faith together as we strive to love God and our neighbor in this time and place.



We've done much over the past year, we've tried many things for the first time and we've been through lots of change. Almost a year ago now, we became a Reconciling in Christ congregation-publicly professing God's welcome and love for all people, and chose to live into this designation by participating in the Twin Cities Pride festival this June. We also did a Ministry Engagement Fair last fall on Welcome Sunday as a way to invite folks to get more involved with things going on here at church, and we tried a new contemplative-type service called "Spiritual Misfits."

Another new thing we're a part of is the Riverside Innovation Hub (RIH). This project works to get us outside of our comfort zones, and the RIH team is working hard to learn more about it in order to bring what we learn to the rest of the congregation-look for more information in their report.

We have been working hard to continue to welcome children and their families in worship and programming throughout the year as well. We started a new monthly learning time for elementary students and their adults called "Crash Course" that has been a chance for students to dive deep into biblical stories with fun activities as well. This new opportunity along with RLC Kids, Confirmation, Vacation Bible School, and other pop-up events have kept our children excited about church and engaged with what we're doing. It is wonderful to see them thinking about God and the world, and one of my greatest joys is the awesome questions kids ask.

We've also been engaged with our community this year. I've been working with the Roseville Area Schools Community Advisory Board-a group that has been talking about how we can partner with our schools and students so that all their needs are being met. During one of these meetings, I got to highlight our relationship with Central Park Elementary, which was a great joy! Mission and Outreach Partnerships is always working to strengthen our community bonds because how we show up in our neighborhood is indeed loving our neighbor as Jesus commanded us too.

A new and unexpected way we got to show up for our neighbors this year was through the Faithful Hospitality program of Interfaith Action. In March we hosted recent immigrant families overnight at church as part of a pilot program that is still ongoing.

We were also able to take our first group of RLC members to Guatemala this year, which was a very exciting step in this budding partnership. This group of eight were able to travel to Guatemala, help build a classroom, and provide scholarship money for students in more remote areas of Guatemala. We look forward to growing this partnership even more and continuing to work together with the folks we have connected with in Guatemala as a way of loving our neighbors but near and far.

Finally, we musn't forget the perhaps "less exciting" highlights, but the ones that are just as important anyway: the day-to-day operations of the church, the successful pRAISE campaign we held, the monthly and weekly meetings, and the meaningful worship each week that keeps us grounded in who we are and whose we are.

As we continue to navigate change and transition in the coming year, I encourage each of you to find something that helps you remain grounded in that promise that you are God's beloved child and God will never let you go and that will never change.

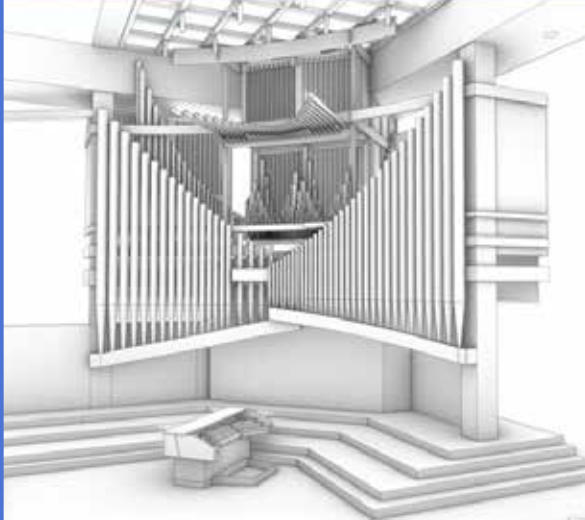
Peace,

Pastor Marty

Pastor Marty

RLC's
J.F. Nordlie
Opus #63
Pipe Organ

- 59 Ranks
- 3,351 pipes
- Completion
June 2025

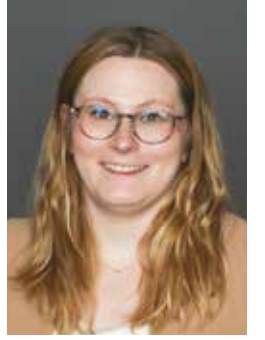


[Read more about the Pipe Organ Project on page 7](#)

GOD'S PRESENCE IS ABUNDANT AT RLC

Tori Kraus, Associate Pastor

What a year it has been. This summer our series was "Everyday Contemplative: The Way of Prayerful Living," based on the book by L. Roger Owens. This series was possible from the two-year long Contemplative Communities for Spiritual Transformation program, a grant opportunity through St. Catherine University that is funded by a Lilly Endowment Inc grant. RLC received this grant last July. As I have been focusing on spiritual practices this last year and as we have moved through this series, I am reminded of God's continuous presence in our lives and here at Roseville Lutheran Church.



This year has been one with many challenges and delights. Thinking back to all that has happened in the last year, I look at Roseville Lutheran Church with awe and amazement. The herculean year-long fundraising effort of the Organ Project Team and disassembly of the Holtkamp Organ in Birmingham, Alabama. A successful pRAISE 2024 campaign, all while not having three of the full-time staff members who ran it previously. The addition of Pastor Eric Leshner, Will Flores, Dustin McDonough, and Kathy Arveson, and their ability to jump in wholeheartedly to what we are doing at RLC. The retirement of Shelton Ingram and Laurel Hofeldt, who both served RLC faithfully for well over twenty years. The transition to new jobs and calls of Lucas Carlson, Rebecca Bedner, Connie Marchio, and Pastor Lauren Wrightsman. The beginning of a call process and transition. The strengthening of our children, youth, and family ministries alongside RLC preschool. The flourishing of our Guatemalan partnership and global ministry with the intent of returning in 2025 to continue developing and building relationships with our partners there. RLC's commitment to its local partners and support in their efforts, alongside supporting our own commitments and promises to our racial justice and inclusion work. And the many other wonderful connections, moments of loss and grief, hardships, and celebrations that are not mentioned here.

I reflect on this last year and see how God's presence is abundant at Roseville Lutheran Church. God meets us here at Roseville Lutheran Church and in our lives. Jesus meets us here at Roseville Lutheran church and in our lives. The Spirit meets us here at Roseville Lutheran Church and in our lives. When we start being intentional on how we view God's presence in our lives, that is when we tend to pay more attention to it and notice it more. Throughout this next year, I encourage you to continue paying attention and explore what God is up to here.

Tori Kraus

Pastor Tori

MY PRIVILEGE AND JOY

Rolf Olson, Visitation Pastor

As visitation pastor at RLC (now for almost seven years) I serve in numerous ways, but primarily I visit our homebound members and bring Christ's church to them. There are about 20-25 people on my list which ebbs and flows over the course of the year. An additional facet of my ministry is the Men's Breakfast and Bible Study which meets on Saturday mornings twice each month. We usually have 15-20 men who share Scripture, current events, and personal concerns. Occasionally I preach and officiate at funerals, as well as serve on several RLC committees and teams which live out Christ's command to "love one another."



- **The Care Team** reaches out to 20+ members to help with chores, share Holy Communion, buy groceries, chauffeur to doctor appointments, and serve as needed and able. We are grateful for the leadership of Ken Groth and Dave Risinger who organize, train, and support the Care Team members. This team also helped organize the monthly dementia-friendly worship services we offered in 2023. This effort is on sabbatical now during our time of transition, but it is still an interest of our team.
- **Our Prayer Team**, led by Pam McCulloch, serves to connect our entire ministry with the movement of the Holy Spirit. Regular updates and requests are shared with each other and our Lord as we see work in tandem with the more physical elements of service. Pam also coordinates our prayer shawl ministry which makes shawls to be distributed to people in special need.

It is a privilege and joy to serve RLC as visitation pastor.

A COMMUNITY
UNITED BY GRACE

A TRANSITIONAL YEAR

Val Velde, RLC Council President

This has been a transitional year for me personally and for us at RLC. As I reflect on the past year at RLC, I am so proud of what we did together as a congregation! Rereading the article written for the 2023 Annual Report, I am touched by how much change we have experienced. God's mission and vision for RLC have guided us throughout the year.



Here are some of our notable accomplishments:

- Launched Reconciling in Christ at RLC!
- Restructured Restricted and Designed Funds
- Hired our Interim Pastor
- Created and Completed our Ministry Site Profile
- Began our Call Committee work to seek our next Senior Pastor
- Rolled out organizational structure that aligns our committees, teams, projects and task forces with our mission, vision, and resources
- Worked within budget constraints and found strategies to continue our ministries with limited resources.
- Hosted wonderful community events!
- Successfully fundraised for the Organ Task Force
- Began work on moving the Holtkamp organ from Alabama to Roseville with a successful organ transplant mission
- Continued work towards our strategic plan including excellent work on our website redesign and volunteer registration process
- Hosted immigrants from South America for a month
- And so much more!

All of this while in the midst of weekly services that bring us closer to Christ and unify us as a community.

This year has been a challenge for me personally. Cancer is hard on individuals and families. It's hard to watch your kids worried for you when you go in for your first, second, and third surgeries. Or struggle with chemotherapy or pain; even when you try to hide it.

But this year has also been a blessing. I have learned a lot, prioritized what truly matters, and realized that most things are "little things." I've also seen the power of community. I'm writing this update having heard the word "remission", feeling good, getting my life back, and so very happy. I am so blessed to have experienced the amazing love of RLC. I can't thank you enough. I am out the other side of this journey and can't wait to pay forward.

I'm looking forward to our shared bright future at Roseville Lutheran Church!

Val Velde
Roseville Lutheran Church Council President



SHARING STORIES

Daniel Pederson, Communications Manager

Communication at RLC takes many forms: bulletins, mailed letters, FaceBook posts, eBlast, the TABLE newsletter, our livestream worship services, the Annual Report, special videos, our website, outdoor signs and banners. Did you know that YOU can help getting the word out about RLC? Share a FaceBook post, or check "Going" on a event. This helps multiply our efforts in reaching our neighbors and the wider community. Thanks for your help!



It's been a year filled with new activities, changes in staff, and work behind the scenes preparing for a new website. That work is in full swing this summer, with a roll out of the updated site planned for this fall. My thanks to Trupti Storlie, Rebecca Field, Sam Holsen, and Pastor Tori Kraus for your contributions early on in the process. The new website will have some new features, and we will have opportunities for hands-on training to demonstrate those to any who are interested. Look for those learning moments this fall.

I am also thankful for our great livestream team: Nick Clausen, Casey Eakins, Sam Larson, and Jeff Johnson. We're fortunate to have several folks which gives us great coverage when one needs to be gone.

AN IMPORTANT PHASE

Erik Storlie, RLC President Elect

As a Lutheran pastor's son, church was a given in my life. After high school and before having kids, spirituality and faith weren't priorities. Trupti and I decided to raise our kids in the church without a strong reason why, just following tradition. I think our family's story is pretty common. When I was asked to join the RLC Council, I said yes even though I already felt pressured by other obligations. As I step into this role as your council president, I wanted to reflect on why I said yes.



As a physician, my job is healing the body. Healthcare is recognizing that social connectedness is an integral part of good health. In May of 2023, the Surgeon General issued a report on the Epidemic of Loneliness and Isolation. In it the Surgeon General shared that 1 in 2 people reported experiencing loneliness prior to the COVID pandemic. 22% of high school students (SAMHSA, 2023) have contemplated suicide, increasing to 41% for LGBTQIA+ youth (*The Trevor Project*). A large and growing body of evidence establishes links between a range of chronic illnesses, like heart disease and dementia, with social isolation. Social isolation is as bad for your health as smoking 15 cigarettes per day.

How does this relate to faith, faith communities, and RLC? In the Surgeon General's report, the solutions presented relate to social connection and rebuilding the social fabric of our communities. Springtide Research found that young people who feel connected to a higher power are two and a half times more likely to say that they are flourishing. Roseville Lutheran Church's mission to Love God, Love Your Neighbor aligns with these elements. Love God reminds us of the importance of spiritual exploration. Love Your Neighbor encourages us to be in community with others. Becoming a Reconciling in Christ congregation makes us a safe space for anyone seeking God and community, whether for a morning or for a lifetime.

So I said yes because RLC is an important catalyst for relationships and faith formation. And that has been our family's experience at RLC.

We are at yet another important phase in the journey of our congregation. There is uncertainty as we fill open staff positions, most notably our Senior Pastor. There is concern about finances with increasing insurance costs, facilities maintenance needs, and changing giving patterns. Society as a whole is moving away from being part of any faith community, and this requires us to rethink how we grow and share faith. But there is so much cause for gratitude and excitement! Our pastors and staff are phenomenal. Our children and youth ministry is growing. New folks are coming every week seeking faith and community. We raised over \$850,000 for an incredible organ in under a year. We also had a successful *pRAISE* campaign, meeting our goal of \$110,000 in 100 hours to fund our general ministry. We have leaders of all ages, long time and new members, seeking to make RLC a place that feeds the soul and creates community.

What does the next year have in store for us? Strategic planning and yearly goals help organizations to get out of firefighting mode. Honestly, the last year has been challenging in this regard. Council will work to regain our traction in this area so that we can keep the big, long term goals advancing even as we attend to the near term concerns that arise as part of pastoral transition and the daily operations of the church.

We're soon calling a new Senior Pastor! We are well under way in this regard, and I trust that our faithful teamwork will lead us to a good fit that will help RLC to thrive in its mission in the coming years.

Facilities maintenance needs our thoughtful attention. (See Bob Zismer's report on p.5 for more details). Every time I drive into the parking lot, I cringe a little bit at the gravel and potholes. We have water leaks. Great work has been done as recently as 2019 on a facilities assessment. This needs to be revisited with fiscal planning that can address these needs on a reasonable timeline.

COMMITMENT

Importantly, our finances need our attention. Though we had successful campaigns this past year, we ended the fiscal year with a deficit. The success of our Organ Project is evidence of the enthusiasm and commitment within the congregation. We need that commitment to translate into sustained giving to the general fund in order to grow our programs and live out our mission.

On the next page of this annual report, you'll see some year-end financial statements. In a separate mailing you'll receive the proposed budget for 2024-2025. Look it over, and plan to attend our Aug. 20 Budget 101 meeting.

Thank you RLC community for the ways you've shaped my faith and impacted my family. This church plays an important role in the Roseville community because of the many ways that you say YES to our mission to Love God, Love Your Neighbor.

BUDGET 101

RLC's 2024-2025
Proposed Budget



7:00 pm

Tuesday, Aug. 20

Meeting on Zoom

ROSEVILLE LUTHERAN CHURCH - STATEMENT OF FINANCIAL POSITION

JUNE 30, 2024

	Operating Fund	Restricted/ Designated	Preschool/ Childcare	Endowment Fund	Total All Funds
Total Cash Assets	(93,629)	500,060	(95,371)	705,168	1,016,229
Total Fixed Assets	22,044,131	-	341,556	-	22,385,687
Total Assets	21,950,502	500,060	246,185	705,168	23,401,916
Total Liabilities	(1,215)	-	-	-	(1,215)
Total Fund Balance	21,951,717	500,060	246,185	705,168	23,403,131
Total Liab/Fund Balance	21,950,502	500,060	246,185	705,168	23,401,916
Cash Position	(93,629)	500,060	(95,371)	705,168	1,016,229
Temporarily Restricted by Donor		402,681			
Temporarily Restricted by Council		50,637			
Special Activities		46,742			
		500,060			

ROSEVILLE LUTHERAN CHURCH - STATEMENT OF CHURCH OPERATIONS (P&L)

JUNE 30, 2024 - OPERATING FUND

	2023-2024 (Actual)	2023-2024 (Budgeted)	2022-2023 (Actual)
RECEIPTS			
Offerings	1,199,023	1,285,000	1,281,313
Other Receipts	187,056	125,000	136,478
TOTAL RECEIPTS	1,386,080	1,410,000	1,417,791
EXPENSES			
Personnel Expenses/Compensation	938,720	1,010,225	1,073,696
Worship and Prayer	13,500	14,200	14,334
Mission and Outreach	54,963	57,570	42,080
Justice, Congregational Learning	3,693	6,650	0
Education and Children's Ministry	3,187	5,370	3,294
Youth and Family	4,300	18,500	3,416
Christian Life/Hospitality	35,004	30,750	60,237
Total Program Ministries	114,646	133,040	125,949
Business Management	285,692	137,820	133,299
Total Properties and Buildings	100,563	128,915	184,379
Total Sustaining Ministries	386,255	266,735	317,679
TOTAL EXPENSES	1,439,622	1,410,000	1,517,324
Receipts Over/(Under) Expenses	(53,542)	0	(99,533)

RLC FINANCES

Kathy Arveson,
Interim Director of Finance

Fiscal year 2023-2024 was a financially challenging year for Roseville Lutheran Church.

Offering and other receipts were \$1,386,080 (which is 2% below budget). Expenses were managed by staff, but ended up \$30,000 over budget (2%) largely due to an unexpected insurance expense. This means there was a \$53K operating deficit for the year. Backlogs in IRS processing meant that Employee Retention Credits or ERCs (partial refunds of employer-paid payroll taxes) were still not received during the 2023-2024 fiscal year. The good news is that RLC should receive \$135,000 in ERCs during the 2024-2025 fiscal year.

Please refer to the Statement of Financial Position, and Statement of Church Operations (P&L) on this page for a snapshot of our current financial situation. As a result of a significant unbudgeted expense, the operating fund is currently in a cash deficit position, meaning we are borrowing from ourselves (Designated Funds) for cashflow. The good news is that some "stale" Designated funds were released into the Operating Fund after discerning that we had paid for expenses from the Operating budget that met the restriction on the Designated funds.

Congratulations to Laurel Holfeldt on her March retirement! Her leaving left a significant gap which we are learning to fill -

LOVE GOD • LOVE YOUR NEIGHBOR

SUPPORTING THE VISION, MISSION, AND VALUES OF RLC

David Booms, Church Administrator

As the Church Administrator I and my staff support the vision, mission, core values, and all of the various ministries of the church in its day-to-day operations. Currently this is done via our Communications team, Office staff, Facilities team, Worship Support team, our Hospitality team and by many volunteers.



Let me introduce my staff Daniel Pederson - Communications Manager, Will Flores - Hospitality Manager, Mary Johnson - Administrative Assistant and Bob Zismer - Campus Lead. I recommend looking at the reports submitted by the Managers where they will outline the updates, additions, improvements, and hopes for the coming year for their areas.

Because I can be seen anywhere in the church at any given time doing any manner of things, I do not find it unusual for people to ask, "What specifically do you do?" Let me give you a taste. I work with staff, departments and other lay leadership to establish and implement church policies in line with the church's vision and county, city, state, and federal laws. Communicate with the senior pastor weekly and, upon request, with the council as needed. Maintain benefits coverage of all employees and files of all legal documents of the church. Work closely with ministry leaders in event planning to ensure all church policies are adhered to and the event is a success. Maintain master calendar of events/building use. (Which includes building use rentals.) Implement or delegate purchasing of furniture, computers and office supplies and equipment. Coordinate special projects at the request of senior pastor or council. Ensure that all ministry departments are adequately supported, staffed, funded, and participants are communicating with one another. Work with the Finance Director in monitoring the R&E of the congregation. Stay abreast of changing technology and other things that enhance the church's ability to achieve excellence in ministry. To round out this "short list" I also coordinate the funerals held here at Roseville Lutheran.

RLC has been blessed with dedicated volunteers, both individuals as well as groups. They are too numerous to name them all individually, especially as I would hate to miss a single one. Let me tell you of some of those activities that they do on your behalf. First there are those that are more visible to you, the Worship Volunteers. They are the fine people that read scripture, shake your hand at the doorway, and take care of you in the Worship Center by giving you a bulletin and collecting your gifts or serving you communion. I thank Mary Schultz who has taken our Lead Usher role. As our attendance numbers are increasing we need more volunteers to help. Please consider contacting Mary Johnson at 651-487-7752 to see how you can help.



Speaking of Sunday's let me acknowledge the work of some other behind the scenes people. First to Jeff Bowar and Jeff Johnson at the soundboard. Then to the team that has broadcast our 9:00 am worship services, Nick Clausen, Casey Eakins, Sam Larson and Jeff Johnson.

Like the proverbial iceberg, many of our volunteers are not normally seen by the congregation, but the results of their efforts are clearly visible. Two such teams are Kitchen Volunteers and the Lively Landscapers. Fewer and fewer churches are providing funeral luncheon any longer. We are blessed by individuals that continue to come forth to prepare food for the grieving. If you have come to enjoy the colorful plants and flowers at our entrances, our Lively Landscapers are to thank for that and many other landscaping improvements. I would be remiss if I did not acknowledge the leadership of Julie Wendland (a Kitchen Volunteer and Lively Landscaper), K.J. Bach, and Mike Dolan.

Lastly, let us talk of some numbers. At the beginning of this year we reported 2,165 individuals as official members of the church. Thirty-four new members joined RLC of which 17 were by baptism. Sixteen of our members have joined the Saints in heaven. Rounding off our total participants in worship, 126 individuals are on the rolls as active Friends. Together 2,291 individuals call Roseville Lutheran their faith home.

however, because of that gap the 2024/25 proposed budget is not completed as of this printing but will be made available prior to the annual meeting. This budget will address the need to fund the deficit from 2023/24 as well as start to build a reserve to handle these unexpected expenses in the future. Please prayerfully consider how you will increase, continue or begin your financial support of RLC's ministry.

If you have questions regarding the current financial status there are several ways for you to ask questions, provide input, and show support for the coming ministry year:

- Contact me via email at karveson@rosevillelutheran.org
- Attend the **Budget 101** in-depth discussion at **7:00 pm, Tuesday, Aug. 20 via Zoom.**
- Attend the **Annual Meeting** in person on **Sunday, August 25 at 10:00 am.**

Special thanks to Tammy Swanson, Roseville Lutheran Financial Assistant, for her continued work with accounts payable, payroll processing and online giving, as well as taking on new responsibilities with accounts receivable and contribution processing and posting.

Thank you, also, to all who generously donate on a regular basis to support the mission and ministry of Roseville Lutheran Church so that we may reach out with the love of Christ to the Roseville community and the world.



RLC WELCOME STATEMENT

Called by Jesus, Roseville Lutheran Church welcomes you with open arms, minds, and hearts. We are all beloved children of God, and we celebrate each other completely: all ages, abilities, races and ethnicities; all sexualities, gender identities and expressions; all family circumstances, and experiences.

RLC pledges our authentic welcome and hospitality. We commit to learn, to grow, and to undo oppressive norms that divide us, while we humbly strive to dismantle barriers to racial, social, and economic justice.

Following Christ's example, let us love God and our neighbor together.



CARING FOR AN AGING BUILDING

Bob Zismer, Campus Manager

- *When weather conditions bring moisture, will there be roof leaks and in how many places? Can the water be contained or will it cause a risk to injury? Will the water cause more damage to the flooring or paint? How many ceiling tiles will need to be changed out and are they accessible?*
- *When heating and cooling system fail, will parts be available and can repairs be made in-house or will outside services be needed?*
- *How costly will the window leakage be to the seasonal heating bill?*
- *Will the new regulations for operating our elevator go into effect next year or the year after? How will the upgrades to both the software and mechanics be supported (estimated between \$45k and \$100k). How much notice will RLC have before an inspector shows up at our door?*
- *Will the pot holes in the south parking continue to get worse and will this impede foot traffic for those using walkers, wheelchairs or canes?*
- *Will the equipment and structure that RLC congregation and visitors rely on to provide comfort and protection continue to do so and for how long?*



MAINTENANCE TO EQUIPMENT, BUILDING STRUCTURE, AND GROUNDS ARE BOTH STAFF- AND BUDGET-DEPENDENT.

RLC depends on preventative maintenance as a means of ensuring reliability to equipment. With a minimum amount of hours (about 7 hrs. per week) visual checks are performed on support equipment to identify any symptomatic problems like noise, vibration, temperature, or visual changes that may indicate a possible failure has or may occur. Filters, belt changes, lubrication is done based on OEM recommendations, or the results of inspections. Despite best efforts and intentions, catastrophic failure will occur.

Historically, support equipment dates back from the oldest building from 1943 and ending with the most recent, (the worship center) in 1996. Over that span of time, connecting buildings were built in 1948, 1955, and 1982. As needed, electrical, plumbing, and HVAC, along with structural modifications were added to unify the buildings into one complex.



While some sources vary on equipment life-expectancies, the facts remain:

- *The 1955 boiler which heats the preschool has had a great life, with around 69 years of faithful service. This will eventually fail.*
- *The boiler for the 1996 building has had 28 years of service and will eventually fail.*
- *Boilers typically last 25 to 30 years with an average life span of around 23 years.*

RLC has had a streak of dependable service that is inevitably going to fail. The question is when, and to what degree. If, for example, the boiler that heats the preschool fails in the dead of winter, supplemental heat will need to be provided while a replacement is sourced and installed. The cost of this replacement has many variables depending on urgency and weather conditions. While this report is not intended to be a forecast of probable failures, it hopefully serves to generate an awareness of the fact that the day is coming when critical failures within the infrastructure/building will occur.

I'm 100% certain of these impending failures.

SOME FURTHER EXAMPLES:

- *Roof top HVAC systems require a crane as a means of removing and replacing these units. Additionally, building trades will be needed like, roofers, pipe fitters, electricians, which drives the cost up even further.*
- *Windows – many of which don't function, and almost all don't seal well against the cold.*
- *Seam failures, age and wear to the roof needs the expertise and experience of a professional.*
- *The south lot is in such terrible condition that the previous contractor who operates a sweeping company gave notice he will no longer provide service due to the damage the holes and uneven surfaces have on his equipment. (Each year, I find deposits of fist size chunks of asphalt sprawled out on the east and south parking lots. This year, between 60 and 80 gallons of asphalt was properly deposited in some of the pot holes).*

Cost reductions have been my forte throughout my career that extends back many years. We were able to trim this year's maintenance budget compared to the previous year – substantially, which freed up significant cash flow to be used elsewhere in the general fund. However, these savings don't do anything to prepare for an inevitable catastrophic equipment failure the can cause disruption to the use of certain parts of the facility due to heating, cooling or roof leakage failures.

THERE ARE CHOICES:

- *Wait until a failure occurs and use situational management and react to circumstances*
- *make smart choices now before a catastrophic failure occurs.*

I prefer the latter.

EXAMPLES OF TYPICAL EQUIPMENT LIFE SPAN:

- *HVAC equipment: 15-20 years. (We have approximately 5 units in service.)*
- *Commercial Boilers: 15-20 years. (Two in operation.)*
- *Roofs: about 20 years, or until leaks or noticeable damage develops.*
- *Asphalt parking lots: 25-30 years, depending on weather, use, and care.*

RLC MUSIC MINISTRY - 2024

John Helgen, Director of Music

*Give thanks to the Lord and call upon God's name;
make known the deeds of the Lord among the peoples.
Sing to the Lord, sing praises, and speak of all God's marvelous works.*

– Psalm 105

Another year of music making has been completed at RLC - thanks to all the musicians of RLC: singers, ringers, and players of all ages and descriptions - for their participation in music and worship this year. Roseville Lutheran is greatly blessed by the gifts of its many musicians, who participate in numerous ensembles - RLC Choir, Jubilate Bell Choir, Bells of Praise, Joyful Ringers, 10:30 AM Worship Ensembles, Acoustic Band, RLC Brass Ensemble, and the RLC Jazz band.



The big event of the past year was the passage by the congregation (at the Annual Meeting in August, 2023) of a resolution to move forward with replacing the RLC pipe organ. RLC was able to acquire, free of charge, an excellent used pipe organ from St. Luke's Episcopal Church in Mountain Brook, Alabama, which will be re-furbished and incorporated into a new instrument now being built by the J.F. Nordlie Organ Company of Sioux Falls, South Dakota. It is estimated that the acquisition of this instrument is providing a cost savings to RLC of over \$500,000. The new RLC organ is scheduled for completion by summer 2025. Numerous events and information sessions were held throughout the past year, and we have now surpassed our fundraising goal of \$850,000!

In the fall of 2023, we kicked off the program year in September with a "One Worship" service led by the RLC Choir and the Brass Ensemble. In October, we hosted a concert by the Metropolitan Symphony Orchestra and celebrated Reformation Sunday with choral and brass music. November saw the start of Festival Choir rehearsals for Christmas, and we hosted a session called "Play the Pipe Organ" where individuals of all ages came and had a chance to play the organ. A Thanksgiving Eve worship service was held on November 22, and the Advent/Christmas mural was installed by our volunteer crew on the Friday following Thanksgiving Day. We hosted a holiday concert by the Northstar and Lake Country Choruses.



In December, the Greater Twin Cities Youth Symphonies presented a concert, and the RLC Christmas Festival Concert was presented on December 16 by choirs, brass, handbells, and chamber orchestra. Four worship services took place on Christmas Eve. On December 31, RLC Jazz presented another episode of "New Year's Eve with RLC Jazz" for a large and enthusiastic crowd.

In January we were visited by Luther College's Nordic Choir, which presented an evening concert on January 13 and then joined us for morning worship on January 14. A week later, the RLC worship space was filled with 450 singers as we hosted the National Lutheran Choir "Tune-Up". Over 40 local congregations sent singers. In February, we hosted concerts by the Minnesota Sinfonia and the Greater Twin Cities Youth Symphonies, and on February 14 we began the Lenten season with our Ash Wednesday worship.

In March, another "One Worship" service was held as we said farewell to Pastor Lauren Wrightsman as she moved to a new call in Madison, WI. The Festival Choir began rehearsing for Holy Week and Easter. A "meditation recital" of contemplative chamber music was presented by musicians playing violin, cello, and piano. Palm Sunday worship on March 24 moved us into Holy Week, and three festive Easter morning services were presented on March 31.

In April, we hosted a concert by piano artist Jacqueline Schwab, an award-winning performer whose playing can be heard on the soundtracks to numerous documentaries by filmmaker Ken Burns. RLC Jazz presented a concert for the beginning of RLC's "pRAISE 2024" initiative, and a community hymn sing was led by John Helgen along with the RLC Brass Ensemble.

In May, concerts were presented by the Twin Cities Women's Choir, and the RLC handbell choirs provided music on "Bell Weekend" under the leadership of Lori Haaland. RLC said farewell to custodian Shelton Ingram on May 12 and honored him for 26 years of service at RLC. A crew from the Nordlie Organ Company of Sioux Falls arrived to remove pipes from the RLC organ which will be utilized in our new instrument.



As summer began, a 10 person crew from RLC travelled to Mountain Brook, Alabama to dismantle the Holtkamp organ which was given to RLC by St. Luke's Episcopal Church. Over 3000 pipes were removed, cleaned, packed, and transported to South Dakota for inclusion in our new organ. A concert was presented by the Grand Symphonic Winds, and RLC Jazz performed once again for the "Taste of Rosefest" event to benefit Roseville parks.

FAITH, FELLOWSHIP, AND FOOD!

Will Flores, Hospitality Manager

In my first 6 months at Roseville Lutheran, I have been lucky enough to experience YOUR hospitality as you have welcomed my family and me into this community. For this I thank the entire congregation and especially thank the volunteers who have shown up for our shared Hospitality Ministry. It has truly been my pleasure to meet you all and I look forward to continuing to build upon our fellowship through food!



We started out hitting the ground running by providing food and comfort at funeral luncheons and strengthening our unified faith at Lenten suppers. We created a brunch service to bid Farewell and Godspeed to Pastor Lauren, and even hosted a few private food events. Building upon the experience from each opportunity, I have able to make small deliberate alterations with respect to the traditions in place here at RLC. We have reorganized the kitchen to create a safer food production area with respect to allergens and cross contamination, repurposed space to streamline and secure inventory procedures, and implemented new kitchen security protocols and rental policies to ensure our facility is used properly and will be in good working order for decades to come, to name a few.

Although I haven't been here that long, we have already had many moments that have created ripples upon the shores of Roseville and continued the tradition set forth by those before me while adapting to fit our current congregational needs. One of the first decisions made was to eliminate the need for as many disposable products. This was made possible through a new partnership with a national food distributor, Sysco, who provided professional technicians to get our commercial dishwasher and coffee system working properly. The new equipment was provided at no cost to us and professional upkeep will be provided by Ecolab technicians at no charge. This has the potential to save our ministry thousands of dollars (and thousands of pounds of trash) per year.

We experienced several equipment and kitchen issues that needed to be addressed, some minor freon leaks in the refrigeration units and a major failure in our main coffee machine were easily managed. The fire suppression system, and ventilation system, however, required coordination between me and Bob Zismer for a few months until everything was properly fixed and safe. Now that these issues have been overcome, we have been able to get our kitchen licensed with the state. This will give our ministry a much greater ability to generate revenue as well as provide a reasonably priced rental space for this community.

Now that our kitchen is fully licensed and operational, I am excited to continue with our plans for the year to come! I have started spreading some summer and fall seasonal menus for both outside catering and "in house" meals that I am excited to share with you all. I look forward to the income generation that this can provide RLC and thereby the positive impact this ministry can have.

I truly thank God for the opportunity to be here at RLC. I feel as though this position was an answered prayer for my family and I hope that I can provide an equivalent impact. The ability to impact this community through real, tangible efforts is immeasurably more rewarding than generating income at a consistent growth rate for the benefits of shareholders/investors. I see so much opportunity within these walls and outside these walls for our community to uplift others in the way of Jesus.

Let's continue to make a difference together through Faith, Fellowship, and Food!

Will Flores
Hospitality Coordinator

As we move into the heart of summer, we will be saying goodbye to one of our staff musicians, Lucas Carlson, who has served for three years as guitarist and vocalist in the 10:30 worship ensembles, as well as assisting with sound and video production. Lucas will be completing his educational training at Luther Seminary this year, and we thank him for his contributions to worship at RLC, and wish him well as he moves on to new adventures in ministry as a Lutheran pastor.



Thanks again to the many participants who gave their gifts of talent and time to RLC music ministry this year, not only with performing and leading music, but with setups and teardowns and buildouts and cleanups. Special thanks to our ensemble leaders - Lori Haaland, Joseph Husby, Lucas Carlson, Charles Scott; to Jeff Bowar, choral conductor; to our custodians; to our stage setup and teardown crews; to Jeff Bowar and Jeff Johnson and Nick Clausen in the sound booth and livestream studio; to Will Flores and Julie Wendland and the kitchen crew; to Pastors Marty, Tori, Rolf, and Eric; to all the office staff for their assistance; and for all other volunteers who helped in any way this year! Above all we thank God, who gives us life, and breath to sing praises.

RLC PIPE ORGAN REPLACEMENT PROJECT

Julie Henry, RLC Organ Task Force

It has been a big year for the RLC pipe organ project! One year ago, \$600,000 of the \$850,000 project goal had been raised, the congregation voted to move forward with the project and the contract with J.F. Nordlie Organ Builders was signed in September. The months that followed were full of major milestones:



- October 2023: Nordlie began work on the new organ console and wind reservoirs.
- April 2024: The design of our new organ, the J.F. Nordlie Opus 63, was revealed at the Meet the Pipe Organ Builder presentation. Joseph Brown, President and Owner of J.F. Nordlie Pipe Organ Company explained the vision for our organ and shared the architectural drawings of the new instrument. The entire presentation can be viewed at rosevillelutheran.org/organ/.
- May 2024: RLC volunteers of the Pipe Organ Transplant Team assisted Nordlie with the removal of the 85 pipe Contre Trompette 16' rank from our organ which is being refurbished in Ohio.
- June 2024: RLC's Pipe Organ Transplant Team assisted Nordlie with the 6-day effort to remove and pack up the entire 3000 pipe Holtkamp organ from St. Luke's Episcopal Church in Birmingham, Alabama and unload it safely at the Nordlie shop in Sioux Falls.
- July 2024: the fundraising goal of \$850,000 was accomplished!

FUNDRAISING SUCCESS!

The organ project is RLC's first legacy project in 27 years. It receives no funding from RLC's annual ministry budget and is financed only by RLC members and friends who have made contributions to the organ that are over and above their annual giving. Fundraising began in the fall of 2022 and the project goal was met in early July 2024.

The Organ Project Team has worked hard to be good stewards of the project to make sure:

1. RLC is getting the best possible pipe organ for the best value
2. Donations go directly to the new organ and associated refurbishing and installation costs
3. There are many ways volunteers can participate in the project



From refurbishing an instrument by a renowned organ builder to save RLC \$1 million, to RLC members donating over 1000 volunteer hours and paying their own expenses to travel to Birmingham and Sioux Falls, to managing logistics, lodging, work-site meals and shipping all saves RLC tens of thousands of dollars.

While we do not have a final fund total as of this printing, we do know that \$854,783 has been committed as of early July. By reaching the project goal at this time, a special gift by a generous donor has been released to fund two additional ranks of pipes that will be included with the organ installation. Any funds donated above the \$850,000 project goal will be used to establish a dedicated fund to ensure the care and maintenance of the new organ.



WHAT'S NEXT?

One year from now, our new organ will be completed. Here is the timeline for the remaining major milestones:

January 2025 - RLC's existing organ will be totally removed. Estimated work time is one week. The piano and various instrumental groups will support worship services.

March 2025 - Installation of the new organ begins at RLC. Estimated time is three weeks followed by about 10 weeks of tonal finishing and tuning.

June 2025 - New organ is completed!

Late 2025 or early 2026 - Organ dedication.

Blending the Holtkamp organ and the best pipes from our existing Möller organ honors the design and history of both organs. It will result in a unique new instrument that will be dynamic, versatile, exciting to play, inspiring to hear, and complimentary to RLC's worship center. The J.F. Nordlie Opus #63 will anchor and enrich our worship services for generations to come, provide many new possibilities to enhance our music ministry, and offer more occasions to invite our neighbors into our worship center for recitals and concerts.

To learn more about this project, visit the Organ Project webpage at rosevillelutheran.org/organ/. Scroll to the bottom of the webpage to access several videos and a thorough FAQ section.

ORGAN PROJECT TEAM

KJ Bach, John Helgen, Julie Henry, Scott Henry, Erik Storlie, Dorothy Tostengard, Dr. Greg Peterson

LOVE GOD • LOVE YOUR NEIGHBOR

LIVELY LANDSCAPERS

KJ Bach & Julie Wendland

As The Lively Landscapers are a small group of dedicated RLC members and friends who enjoy getting their hands dirty, and work to enhance the garden areas and rain gardens on the RLC Campus that brings a welcoming and colorful greeting to all who pass by and come into RLC. Here are a few highlights for 2023-24 activities:

- The Cross in the 'Cross Garden' by the North Lobby Entrance was completed renovated as well as the Preschool Garden with thanks to Mike Dolan & Dave Werner for removing the junipers & arborvitae. Thrivent Action Team grants funded these renovated gardens. The Preschool plant sale provided many Annuals for the RLC Gardens.
- Spring Cleanup was truly a kickstart to the ALL gardens in early May as a part of the 2024 pRAISE campaign, as well as the late 2023 Summer Cleanup event prior to Welcome Sunday. THANKS TO MANY HANDS and CLIPPERS!
- The Water Buddies once again kept the Flower POTS going through the HOT 2023 summer.
- The Easter Garden plants are transplanted into the RLC Gardens and continue to bloom beyond Easter. This is being good stewards of the donations to the Easter Garden plants.
- Transplanting happens on a regular basis amongst the 13 gardens, including plants gifted to the RLC Gardens by RLC members and friends. Thanks to Jim & Lorene Roste, Jeff Bowar, Kathi Bergenheier, & Julie Henry for plant gifting. Included in this donation were herbs planted in Marty's Garden (at the top of the south steps). Will Flores, Hospitality Director, is pleased to have access to fresh herbs onsite for his cooking.
- The ChildCare House gardens are often a challenge to keep weeded. The Childcare House Sign garden will be renovated in the Fall or next Spring with perennials.
- Julie Hanson has shared her geraniums for many years at the corner on Fernwood/Ryan.
- Mike Dolan took on the mowing duties for 2023 and 2024... as a VOLUNTEER!! Thank you, Mike for keeping the lawns mowed and trimmed.
- In May 2024, a few Lively Landscapers shared their expertise with the Preschool students helping them each plant a few seeds so they could watch them grow before taking their plants home at the end of the school year.
- As the RLC Gardens become more established, the challenge of splitting, weeding, & thinning of plants is upon us. The River Birch trees drop lots of sticks that are picked up by the Livey Landscapers on a regular basis to keep the RLC Gardens looking neat. Yard debris is regularly taken to the Midway Compost site.
- The North Office entrance has new blue pots for a splash of color at that entrance. The pots by the South and North Entrances & the large pot at the flagpole are planted with seasonal plants and decorations.

The Lively Landscapers have lovingly cared for the RLC Gardens since 2020. They are not funded by the RLC General Ministry Budget, but by individual contributions, RLC Endowment Fund grants or RLC member Thrivent Action Team grants.



PRESCHOOL AND CHILDCARE MINISTRY

Sher Noot, Director of RLC Preschool and Childcare

What an amazing 2023-2024 year we had at RLC Preschool and Childcare! RLC Preschool began on November 1st after a short pause, and I have to say it was worth the wait. We were able to provide families with a strong program, with solid, happy staff, and clean, inviting, refreshed spaces.

Preschool and Childcare connected with various ministries this year: Chapel time with Pastors Marty and Tori, and Jenna. We planted seeds with the Lively Landscapers. Jenna and I collaborated on both the Family Good Friday Service and the Earth Day Extravaganza which children and families from RLC Kids and RLC Preschool and Childcare attended. I connected with John Helgen, who is now providing music time for our kiddos. It's been an amazing year with amazing connections.

RLC Preschool and Childcare families were in strong attendance at the **pRAISE** Block Party with 81% of current families in attendance. We also had 3 new families (2024-2025 school year) join in the event as well.

The RLC Preschool families were included too: We performed our Christmas Program, accompanied by John Helgen, followed by our December Gingerbread House event in the Worship Center. We hosted "Someone Special Day" in February. Grown Ups and Goodies in both March and April. We also had families participate in "Mystery Readers." The Mystery Readers read over 2 dozen books to us. It was hard to tell who enjoyed this more, the readers or the kiddos. It is such a joy to be able to share our preschool with our families.

Our space is looking amazing – or, as one preschool parent stated, "Wow, we're really coming up in the world!" Our preschool space is refreshed and revived with new paint, a new parent check in shelf and new carpet in the hallway! A huge thank you to everyone who helped with these projects.



RLC Preschool and Childcare also has a new look! Daniel and I worked together to have a combined preschool and childcare page on the RLC website. Many families contacting us had no idea that RLC had BOTH programs. Daniel also was instrumental in helping design a new RLC Preschool and Childcare LOGO. You can see it on the preschool entrance as well as on the childcare front window! It's a logo that will make you smile!

The Lively Landscapers installed a beautiful garden outside of the preschool entrance. An Eagle Scout will be installing a "Friendship Bench" and a community member will be installing a "Little Free Library." All of this will help connect us better with the neighborhood, by being a beautiful welcoming family friendly place.

RLC Childcare is thriving! We are receiving numerous calls weekly from families looking for quality affordable childcare for their children. We have a strong program and our toddlers are more than ready to join RLC Preschool when they turn 3 years old. We had 6 families that had children that were dually enrolled in both our childcare and our preschool program. This is a great opportunity for families that need a longer day for their children.

RLC Preschool is growing. We have a wide variety of attendance options that meet the needs of our families. We have our mixed age classes (ages 3 years to kindergarten enrollment) that run Monday through Friday. Students can attend the Morning Program from 9:00 am - 12:00 pm, or stay for Lunch Bunch until 1:00 pm, or they are able to attend all day from 9:00 am - 3:00 pm, which includes our Morning Program, Lunch Bunch, Rest Time and then our Afternoon Program. The Afternoon Program has a small, concentrated feel, and really lets the teacher and the students dig deep and explore various curriculum and themes. We are also able to provide flexibility in the number of days that families can attend, with 2, 3 or 5 days per week.

I am grateful to be a part of the Childrens, Youth, and Family Ministry of RLC! Together we can accomplish great things and help to grow amazing humans!



PRESCHOOL AND CHILDCARE MINISTRY

Jenna Baccam, Director of Children's Ministry

So much has happened this year in children's ministry and we are so excited to share with you all! Having been my first full year in this position, I was excited to start some new events and change others to better reflect the talents and gifts of our kiddos.

Starting with a few of our education areas of children's ministry, RLC Kids was adapted this year to have a rotating sort of schedule. One week we would do a craft, the next week we would do a science project, then a game, and so on and so forth. This seemed to create a lot more interest in the lesson plans and faith formation than if we were to do the same kind of project each week.

We also added another education hour in the middle of the week for our kids who have a lot of questions about the bible and faith. Pastor Marty and I led Crash Course each week on Wednesday evening; choosing a specific topic from the bible and focusing on that for the hour (the story of Ruth and Naomi, the Ten Commandments, the Lord's Prayer, etc). Kids could ask questions freely and work together to fully understand the topic of the month. I wish you all could hear the things they say and ask, because it is incredible to see how invested they are into their faith already! We are excited to continue this program next year on the second Wednesday of every month starting in September!

On top of education and faith formation events, I have started adding more community time into our programming as well. There was a very obvious need that families wanted to connect with other families in our children's ministry program, but did not have a space to do so. A conversation happened through the Children's Ministry Task Force last fall, and Family Fellowship was created as a once a month hour for families who are involved in our children's ministry to connect with one another. This may include playing silly games, talking about our faith, and going to activities together. Two of my favorites have been when we went to the trampoline park and when the nature center came to church with their animals! Doing these activities to grow together as a community has proved to be an important part of this ministry and has been a personal favorite of mine as well.

Lastly, I want to highlight our two biggest programs we do once a year: the Christmas program and Vacation Bible School. From what I understand, the Christmas program was a major change from what has been done in previous years. The program was essentially stripped down to a simple story telling of the birth of Jesus with classic Christmas songs. I really wanted to highlight the talents of our kids during this time and they all shined so bright! I am looking forward to our program this next year and to learning more about the gifts of this group of kids.

VBS this year was titled 'Camp Firelight'. We focused on people from the bible who had a tough time trusting in God, but once they did, they grew to become a very important part of Jesus' story and very important in the bible! We had a lot of fun together this week and even made smores for snack to stay with the camping theme! Thanks to all our volunteers who made it possible for our kids to learn and grow in their faith!

Thank you all for supporting the children of this church. I am so excited that I get to continue in this ministry with all of you and your children. It is truly a gift to be able to spend time with these kiddos each week and watch them grow. Stay tuned for our CYF calendar coming out very soon for all the events happening in the fall!



YOUTH AND YOUNG ADULT REPORT

Tori Kraus, Associate Pastor

This year's theme for the ELCA Youth Gathering is "Created to Be" from Psalm 139:14, "for I am fearfully and wonderfully made." Each day of the ELCA Youth Gathering had a theme. The themes are "Created to Be": brave, authentic, free, disruptive, and disciples. To remember that the Holy One created us to be all of those things and to practice all of those things, while knowing that no matter what we are created by God to just be ourselves.

I have witnessed throughout this past year our youth being who God created them to be: brave, authentic, free, disruptive, and disciples. I have heard them talk openly about God and the Spirit at work in their lives. I have noticed many new faces joining our Confirmation program not knowing anyone in our congregation, but wanting to participate. I have seen them challenge and ask deep questions about their faith and life. I have seen them lean into and be unapologetic about who they are. I have watched them go to the ELCA Youth Gathering and to Camp Wapo. I have witnessed them be in community with one another in our church and outside of it.

Our youth know what it means to be created by God and created in the image of God. Knowing that no matter what they do, there is nothing that they can do to make God love them any more or any less than God already does.

I believe this is an important reminder for all of us too. That we are all created in the image of God, and we are all created to be brave, authentic, free, disruptive, and disciples. When it is too difficult for us to remember or too hard to follow Christ, we can look to our youth because they are doing it each and every day, and they can remind us that we too are created by God to be ourselves.



RIVERSIDE INNOVATION HUB

The Riverside Innovation Hub Team continues the work of becoming a vital neighbor to our immediate community. We recently wrapped up the official Accompaniment phase, which invites our team to deeply listen to our neighbors and their experiences and to connect with our neighbors by deepening relationships.

Our team used several ways to understand who our neighbors are in the Roseville community. Demographic data helped us understand some of the characteristics of the people living in our neighborhood; these characteristics included race, age, (dis)ability, ethnicity, family structures, and economics. We took a prayer ride together through our neighborhood to identify areas of consolation and desolation. We considered how one person might see desolation in an area, but another person, with different experience might see consolation. We are attending listening posts to hear community conversations first hand. Listening posts include school board meetings, library events, even coffee shops or local bars. What are people talking about? What is important to them? Where are they feeling despair? Finally, we are starting one-to-ones: conversations with individuals to hear their hopes and concerns, for themselves and our shared community.

The RIH team invites you to be part of this Accompaniment work too! Have you had a recent conversation with someone in our community that you would like to share with the team? Do you have someone you think should be part of our accompaniment one on one conversations? Is there a listening post you go to that we could attend with you? We invite and encourage everyone to be part of this humbling and exciting work.

We are now moving into the Interpretation phase of our learning, where we will work to connect what we have learned about our neighbors with our faith stories and values. Read on below to find out more.

BACKGROUND ABOUT RIVERSIDE INNOVATION HUB and THE PUBLIC CHURCH FRAMEWORK

In the fall of 2023, Roseville Lutheran Church joined the Riverside Innovation Hub (RIH), a learning cohort at Augsburg's Christensen Center for Vocation, to pursue God's call to become a vital neighbor in our community. RIH uses the Public Church Framework, developed by Augsburg University, as a structured approach to how a church can engage with its neighborhood and community more meaningfully.

ADULT EDUCATION

Sharon Swiglo, RLC Adult Education Chair

The Adult Education Committee continues to provide a variety of topics to help members learn about our Faith and opportunities to be aware of our neighbors and their needs. The focus of Love God, Love Our Neighbor is the guide we follow in looking for topics to present.

In September 2023 we heard about the 12-Step Programs from Dot Probst. The Organ Committee gave us an update on their progress on the last Sunday in September.

October brought information on Last Minute Instructions from Lorene Roste with a binder and pages to fill in for those who need to know your wishes when you cannot communicate yourself. On the second Sunday Thrivent brought information on Financial Foundations. David Wangaard and Karla Leitzman represented Lutheran Immigration and Refugee Services the third Sunday of October. The following Sunday brought a group from Edina who had traveled to El Paso telling of their experience with immigrants there.

Then, Pastor Rolf Olson updated information on Christian Nationalism. The second Sunday in November Dr. Jeffrey Nelson spoke about Difficult Decisions using concepts from his book "What Should I do?" Mary Jane Haemig returned for two weeks telling us about Advent and Luther's Neighbors.

In December, Pastor Marty reported on Guatemala, Kristin Anderson spoke on Advent in Art, and John Helgen taught us more about some Advent and Christmas hymns.

January was Mission and Outreach Month where we learned from Pastor Marty about "Why Partnerships?" and "Why Social Justice?" We also had a speaker from Synod and one from Lyngblomsten. The Dresser Build concluded the month, which helps to keep us informed about our contacts near and far.

February began with Tom Lund explaining the Legal Directives of Estate Planning to follow up on the Last-Minute Instructions from October's presentation. Nancy Koester spoke about Sojourner Truth including excerpts from Koester's recent book on the topic. Seema Pothini returned with an update on her work in helping people relate to one another on difficult topics. Dr. Will Healy presented ideas on Church in a changing community.

March began with an Organ Committee update. Jim Boyce then had three Sundays to present more information on the small book of Philemon and on I John where Christian Faith wrestles with issues of life in the world.

In April, Roberto Valdizon spoke movingly about his experiences as an immigrant. Next, Shari Seifert shared her first-person account as described in her book about George Floyd at the "Intersection of the Minneapolis Uprising" and the neighborhood response. The following Sunday Kristin Anderson examined Bible Women by Women artists.

In May Rolf Jacobson spoke on Divine Laughter, Humor, Theology and the Christian Faith. After that Kristin Anderson returned with her illustrated talk on the Sistine Chapel.

June's Summer of Psalms focus had presentations by Dot Probst, Chris Gehrz, and Kelli Hofmeister.

We hope the diverse offerings of the Adult Education time on Sunday mornings has given those who attend a firmer foundation in Faith and a desire to reach out to our neighbors when and where we meet them. The Adult Education Committee welcomes your suggestions as we continue to present meaningful Sunday morning topics.

The Public Church Framework has four phases that we cycle through, outlined below. While it can appear that the phases are distinct and separate, they often flow into one another and are less rigidly defined in real life than they are on paper. The phases are:

1. **Accompaniment:** This is about walking alongside others in the community, listening to their stories, and sharing experiences. It's not about imposing our views, rather it is understanding what the community is experiencing and how the church can walk alongside those experiences.
2. **Interpretation:** After listening, the church interprets what it has learned. This means looking at the information through the lens of our faith, our values, and the teachings of the Bible to understand how we can respond as a community of believers.
3. **Discernment:** This step involves making thoughtful decisions about how to act on what we've learned and interpreted. It's about prayerfully considering where God is leading our church in the context of the community's needs.
4. **Proclamation:** Finally, this is about sharing God's love and our church's mission through our actions and words. It means publicly living out our faith and the decisions we've made based on our accompaniment, interpretation, and discernment.

In practice, using the Public Church Framework at Roseville Lutheran Church is foremost about developing relationships with people and other organizations. However, it can inform current and future initiatives like our community outreach programs, partnerships with local schools or organizations or hosting of community forums. Each step of the framework helps the church's actions to be thoughtful, informed, and aligned with both our faith and the experiences of the community around us.

Interested in learning more? Reach out to our team members: Alice Neve, Leon Neve, Kris Olsen, Mary Peterson, Trupti Storlie, Tanner Wyatt, Pastor Marty Wyatt

MISSION AND OUTREACH PARTNERSHIP

Janelle Olson

The mission of the Mission & Outreach Partnership Team is to engage in ministries and partnerships that reflect RLC's mission and vision, and to encourage congregational support and engagement in these partnerships. This means recognizing that we are called to love as we are first loved. This is a commandment of action and is lived out in the ways in which we respond to our neighbors both locally and globally. "You shall love your neighbor as yourself." Matthew 22:39

During the past year, the RLC congregation has served our local partners in abundant ways through the Mission and Outreach Partnership Ministry:

- Central Park Elementary – 17 RLC Members provided year-long student support through tutoring; congregational Back to School school supply drive and winter clothing drive; Back to School breakfast for teachers.
- Every Meal – RLC volunteers serve at Central Park Elementary every other week to distribute backpacks packed with food from Every Meal.
- Dorothy Day Center - RLC volunteers prepare and serve a meal every month at the Dorothy Center; congregational Warm Toes and Tummies winter sock drive.
- Bridging - Dresser build - 40 dressers were built through the hard work of confirmation students and the congregation!
- Keystone - Financial support through the Angel Fund; spring food drive; RLC kids created hygiene kits
- Feed My Starving Children - Mobile pack in April in conjunction with Incarnation Lutheran Church

The Christmas Sharing Tree served many of these local partners, collecting goods and financial gifts for Central Park Elementary, Bridging, Keystone, and Every Meal.

Our global ministry partners receive financial support. Pastor Marty and a team from eight Roseville Lutheran traveled to Guatemala in February 2024 on the first trip to visit our new partners in Guatemala. During this trip, these folks were able to meet students who will be able to attend school because of scholarships provided by Roseville Lutheran and the group was also able to help construct a new classroom for a growing village school. The trip was meaningful for the folks from RLC and the community members in Guatemala who we were able to meet.

As we are called to do the work of Jesus in our community and the world, we are grateful for our local and global partners, and look with open hearts and minds to where Jesus calls RLC next to serve through the Mission and Outreach Partnership Team.

RLC OUR NEIGHBORS AND ME

Marilyn Shardlow, ONAM

Our Neighbors and Me (ONAM), RLC's racial justice team, works to heighten congregational awareness about past and present racial injustices in our community and beyond; advocates for the inclusion of Black, Indigenous, and People of Color (BIPOC) perspectives in all church discussions, supports RLC as a welcoming and supportive environment for all, and works to ground our church's decisions and actions in love for all our neighbors as Christ directs us.



- During October 2023, ONAM presented a display in the lower hallway that asked the question, "What does our faith say about the ways we relate to the other people's stories? Do we read them as windows into the lives of others, as mirrors of our own beliefs and traditions and do we react to them with open hearts and minds?" ONAM member Janet Risinger was instrumental in combining both verbal and visual elements in order to encourage RLC members to stop and contemplate why and how Christians should welcome the inclusion of all people's stories in contemporary fiction and non-fiction. The Project Team received many appreciative comments from RLC members and staff.
- On February 18th, 2024, Seema Pothini, educator and director of Ally Management at "Humanize My Hoodie," presented an Adult Education session which provided concrete tools to support bystanders in speaking up or responding effectively when microaggressions, bias or other negative moments occur in personal or professional conversations. Participants left feeling more prepared to recognize these moments of bias and to speak up in the moment instead of waiting for the next time or until it is too late to respond. This was Ms. Pothini's second visit to RLC, and we look forward to having her back next year.
- ONAM recently began securing funding and creating new relationships with area congregations to bring "Just Move for Churches: Tools for Interculturality and Antiracism" to Roseville Lutheran for six Monday night sessions beginning in October of 2024. (A special effort was made to contact BIPOC churches in the area.) RLC Endowment provided a grant of \$3300 for support. The Roseville Area Community Foundation provided a grant of \$2500. St. Michael's Lutheran and St. Timothy's Lutheran Churches have also provided funds. For further information, consult the September 2024 TABLE.
- Two members of ONAM attended the ELCA Minneapolis conference, Lutherans for Racial Justice (formerly known as European Descent Association for Racial Justice) in March of 2024. They brought their findings back to the committee at our April meeting. We consider it very important to see how the larger Lutheran community is growing in their understanding of diversity and inclusion.
- The ONAM Committee was very happy to welcome three new members this past spring: Arlene Skoor, Kathy Miller, and Joan Larson. They are added to the group which includes Heather Awad, Marilyn Shardlow, Nancy Olson, Pastor Marty, Leon Neve, Alice Neve, and Janet Risinger, bringing our number up to 10.

CARE AND SMALL GROUPS

Pam McCulloch, Council Liaison

Many groups continue to provide care to the members of Roseville Lutheran Church. The Care Team led by Pastor Olson, Ken Groth and Dave Risinger; Quilters led by Debbie Kay; Prayer Shawl Ministry and Prayer Team coordinated by Pam McCulloch provide direct personal and tangible ways to let members and those out side of RLC know that we are Loving God and our Neighbors. There are small groups that help members gather in different ways. The Men's Bible Study led by Pastor Olson, RLC Reads led by Bob Bergstrom, Pastors' Bible Study led by Pastors Eric, Marty and Tori and RLC Family Fun coordinated by Sarah Richter all meet regularly to bring members together in fellowship and learning.

Pastor Eric will help create a process for Small Groups where individuals can express interest in being in a small group. Individual interests and/or small group topic interests are identified and small groups are formed. A small group can be for a short length of time or an indefinite length of time depending on group interest and purpose. Stay tuned for more to come.



RLC QUILTERS

Debbie Kay

The RLC Quilters are happy to report a successful year of providing a warm quilt to our neighbors in need. Our small group of volunteers enjoy working with our supply of fabric and quilt tops to assemble over 150 quilts of various sizes so far this year. We have provided lap quilts to several local nursing homes, baby quilts to the Women's Care facility and many twin, regular, queen and king size quilts to Bridging.

We are grateful for the support the congregation provides for so many years to make this outreach ministry possible. Since the earliest beginnings of this church so many of our volunteers have donated their time, talent, wisdom and love of making quilts to meet our mission of Love God, Love your neighbor.



IMMIGRATION

Nancy Olson, Immigration Team

The Immigration Task Force had a vital ministry this past program year. We accomplished all our goals and await the last in August. Our list of accomplishments is the following:

EDUCATION – we hosted three adult education forums.

1. Lutheran Immigration and Education informed us of its national ministry which includes building a "Welcome Center" in Guatemala for those who are deported back to the country from the U.S. It will include job training, mental health services, and relocation services. LIRS also lobbies Congress and provides refugee and immigration services in the U.S.
2. A group from Edina community Lutheran Church reported on their trip to the southern border. While there they provided meals, visited refugee services in Mexico, and heard about the horrors of the Darien Gap. (One of the families RLC hosted walked with a child on the father's back through the 60-mile Gap.)
3. Jim and Sharon Boyce's son-in-law, Roberto, told his story of the stressful trip fleeing the repressive government in Peru in the '90s. In addition, he told of his work with the immigrant community here, setting them up for business ventures. (He is invited back in the fall to go more in depth.)

ADVOCACY—the congregation advocated the Minnesota legislature to pass the proposed legislation allowing immigrants to apply for a driver's license. This passed.

OUTREACH

1. RLC provided several carloads of school, hygiene, and cleaning supplies to Lutheran Social Services through a drive this winter.
2. The task force shopped for items for a household set-up for an immigrant family working with the International Institute of Minnesota. Set up should take place in August.

At times our work has seemed chaotic, but we pray that where there is chaos, the Holy Spirit will guide us.

List of Nominees to be voted upon at the Annual Meeting, Sunday, August 25, 2024

COUNCIL - Vice President - Naomi Tetzlaff (3 Years)

My name is Naomi Tetzlaff. My family and I have been members at RLC for 25 years. I have been involved as a confirmation leader and children's ministry. In February my husband and I had the opportunity to go to Guatemala with the team from RLC. I am looking forward to serving the congregation and community of RLC.



COUNCIL - Care and Small Groups - Pam McCulloch (2 years)

I have been a member of RLC for almost 41 years. During that time I have had the opportunity to be a part of children's and youth ministry, Bell Choir, church council (three times), endowment committee, call committee for Pastor Hans Jorgenson, nominating committee (twice), Small Group planning and a Small Group, Prayer Team, Prayer Shawl Ministry, Central Park Tutor, currently a member of a Small Group that started during Covid and continues weekly on zoom, Scripture reading and communion serving and other opportunities guided by the Holy Spirit. But more importantly I am a member of a community that has supported me in times of joy and times of sadness. My church family is very important to me and as the Council Liaison for Care and Small Groups I hope to continue to use gifts given me by our Heavenly Father to further the opportunities of RLC members to be a part of Care and Small Groups.



COUNCIL - Children, Youth, and Family - Nancy Brown (2 years)

My name is Nancy Brown, and my husband and I have been members at RLC for over 20 years. We have three sons who are 18, 16, and 13 years old. I am also an 8th grade math teacher. I was involved with RLC Kids when our children were young, and I have been involved in the Confirmation program for the past 6 years as a Confirmation Leader or Lenten mentor. I have really enjoyed getting to know the youth in our congregation and being a part of our youth program.



COUNCIL - Membership Engagement - Dot Probst (2 Years)

Hello Friends! Upon my arrival in the Commons in April of 2003, 21 years ago, I experienced piano jazz music. Enchanted and touched, I am still hanging around. I thoroughly enjoy our congregation's artists and those we invite, all our cooperative creative endeavors, and the progressive, servant nature of our people.

I have served in the following leadership roles: The Discipleship Task Force; The Beyond Damascus Lenten Devotional Challenge; Youth Mentorship; The Design Team for 12 years, (I designed the concept of the baptismal font, rendered the Facility Team's concept for the Coffee Café and wrote the grant for its furniture); Was a founding member of Our Neighbors and Me (ONAM); Served on the Mission and Outreach Team for 5 years; Presented several Adult Ed Hour talks; Created the concept for the Justice Festival, and I am a 2003 Luther Seminary MA Education Leadership graduate and Professional Architect. I have also had several essays published in Gather, the quarterly magazine of the ELCA Lutheran Women's Ministry.

I look forward to offering my service to our Congregation as a Council Member!



Finance Committee - Rebecca Field (3 Years)

My husband Brent and I, and our daughters Jaelyn and Kyrie have been members of RLC for just over 8 years. When we moved to Roseville we were looking for a family-friendly church, and we loved the mission and vision of RLC! With children, we appreciate the focus on serving our neighbors, and have enjoyed becoming involved in the church community. I have had the opportunity to be an instructor at VBS, serve on the Children, Youth and Family Ministry Team and the Development Strategy Task Force, and most recently served on the Executive Committee. I enjoy being active and you may catch me running around the streets of Roseville. My husband and I love to travel and spend time outside with family and friends. Professionally, I am a partner at CliftonLarsonAllen, a public accounting firm and have been there 20 years serving nonprofit organizations. I feel that my background and passion will allow me to make an impact within the Finance Committee to ensure our financial health can support the amazing work we are doing at RLC and I look forward to serving in this new capacity.



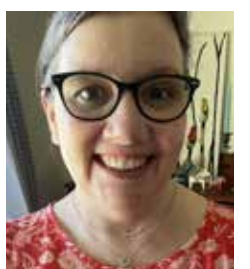
Endowment Committee - Carrie Hefte Hanton - (3 Years)

Carrie Hefte Hanton and her children have been members since 1988. She served on council from 2019 - 2021 and was council liaison to the Endowment Committee during that time. In 2021, she was elected to the Endowment Committee for a 3-year term and is currently serving as secretary. Carrie was a member of the Constitution and Bylaws Task Force in 2021- 2022. In 2023, she joined the RLC team that tutors at Central Park Elementary and thoroughly enjoyed her time tutoring kindergarteners this past school year. Professionally, Carrie graduated from the University of Minnesota Law School and after working at a law firm for five years, she spent the next 33 years in the law department at Wells Fargo practicing intellectual property law, retiring in 2022. Carrie would like to serve another 3 years on the Endowment Committee in order to work on increasing the congregation's awareness of the Endowment Fund and the many worthy projects that it funds.



Endowment Committee - Audra Engebretson - (3 Years)

Hello, I'm Audra Engebretson and I will be serving my second term on the Endowment Committee. I live in Roseville with my husband Brent and have two children Anders and Emma. We have been members since 2011.



Endowment Committee - Mona Lackore - (3 Years)

My husband (Ron Adkins) and I joined RLC about two years ago. We moved here from Willmar in 2021, after I retired from my career as a lawyer. My legal work focused on representing low-income individuals, first in civil work with Legal Services, and later in criminal, commitment, and child protection cases as a Public Defender. I was active in my church in Willmar (Bethel Lutheran), including singing in the choir, serving on church council, and serving on various committees. I look forward to getting more involved at Roseville Lutheran, as well!



Nominating Committee - Bob Bergstrom (2 Years)

Bob Bergstrom is a retired St. Paul Public Schools English teacher and has been a proud member of RLC since 2006 along with his wife, Marj. He enjoys being a regular at Men's Bible Study, coordinating RLC Reads, tutoring at Central Park Elementary, serving at the Lenten Soup Suppers, delivering Meals on Wheels, assisting at the Sunday services, serving on the Inclusion Task Force and Immigration Team, and tagging along as a choir groupie on their last two European tours. Bob was a part of the Nominating Committee several years ago, and it was so much fun he decided to try it again.



Nominating Committee - Brad Mennicke (2 Years)

My name is Brad Mennicke, our family (Michelle and Amelia) joined the RLC community about 10 years ago. I've been involved in some of the past Praise RLC campaigns, and other church activities. Our family really enjoys the strong youth program RLC has to offer, and has always appreciated the pastoral staff's engaging sermons. I'm a computer engineer helping develop the chips that go into Medtronic's pace makers. Some other things about me: we live in Como Park, I went to 12 years of Lutheran school, graduated from Concordia Academy, and I enjoy unique coffee beans. I look forward to serving on the nominating committee.



RLC ANNUAL MEETING

10:00 am
Sunday, August 25

Worship that Sunday will only be at 9:00 am. Childcare provided for the meeting.



NON-PROFIT ORG
U.S. POSTAGE
PAID
TWIN CITIES MN
PERMIT NO. 2168

RLC 2023-2024 ANNUAL REPORT

**SUNDAY
AUGUST 25**

- VOTE ON NOMINEES
- 2024-2025 BUDGET
- OTHER BUSINESS

**9 am WORSHIP
10 am MEETING**

ROSEVILLE
LUTHERAN CHURCH
ANNUAL MEETING

RLC ANNUAL MEETING PROPOSED AGENDA

10:00 am, Sunday, August 25, 2024

- Opening Prayer
- Meeting Rules and Etiquette
- Call to Order
- Approve Agenda
- Approve 2023 Annual Meeting Minutes
- President's Report
- President-Elect's Report
 1. Organ Project Team Report
 2. Transition Team Report
- Election of Lay Leadership and Vote
- 2024-2025 Budget Proposal and Vote
- Closing Prayer

BUDGET 101

RLC's 2024-2025
Proposed Budget

7:00 pm
Tuesday, Aug. 20
Meeting on Zoom

MINUTES OF 2023 RLC ANNUAL MEETING

Sunday, August 27, 2023

*** Draft ***

Presiding, Rebecca Field, Council President. Parliamentarian, Joe Zeigler. Secretary, Erik Storlie.

Call to Order, time: 10:10 AM

Establish Quorum: 165 members registered.

Opening prayer - Pastor Lauren Wrightsman.

Approve agenda. Motion - John Shardlow. 2nd. Approved.

Approval of 2022 Annual Meeting minutes. Motion - Mary Schultz. 2nd. Approved.

President's report—highlights of recent year.

- Nancy Olson - suggestion to amend wording of one goal around community to say "faith-based and non-faith based," to reflect our partnerships with organizations like Keystone and Bridging.
- KJ Bach - Thank you for developing a strategic plan that will take RLC far into the future. The key to our success is engagement and involvement.

President-Elect's message

Election of lay leadership and vote. Motion to vote for candidates to lay leadership - Erik Storlie. 2nd.

2023-2024 Budget proposal and vote. Motion to vote for proposed budget as written - Linda Nelson. 2nd.

Reconciling in Christ Congregation

- Inclusion Task Force Presentation
- Q and A
- Congregational vote. Motion to become a Reconciling in Christ congregation - Pam McCulloch. 2nd. Approved.

Pipe Organ Project

- Organ Task Force Presentation
- Q and A
- Tanner Wyatt - question regarding the ongoing annual maintenance costs of a new pipe organ. This would come out of the pipe organ fund.
- Congregational vote. Motion to move forward with the Pipe Organ Project by signing a contract with J.F. Nordlie Pipe Organ Company to take into possession, refurbish, and install the Holtkamp #1762 organ. The total project cost, including advertising and fundraising, is not to exceed \$850,000 - Erik Wolhowe. 2nd.
- Dave Hofeldt - friendly amendment: postpone formal voting on the pipe organ project until a community needs assessment, as laid out in the strategic plan, is completed. 2nd, Chad Hofmeister.
- Bill Metzger - money given to the organ is over and above annual giving and should not affect giving to budget.
- Mona - we should vote on the amendment before us.
- Bob Bach - we should move on with this vote.
- John Helgen - the organ needs have been discussed for 20 years and we should move forward with the project.
- Linda Nelson - this discussion has been happening for 1.5 years and it's time to move forward.
- Voice vote on the amendment motion: Nays have it.

Voting Results

- Lay Leadership approval: Yes 161, No 0
- 2023-24 Budget approval: Yes 157, No 3
- Become a Reconciling in Christ congregation: Yes 153, No 6
- Proceed with Pipe Organ project: Yes 148, No 17

Motion to adjourn - Joe Zeigler. 2nd. Approved.