



THE PEACE LUTHERAN

VOLUME 50, ISSUE No. 9

OCTOBER 2025

OCTOBER SCRIPTURE READINGS

October 5: **Seventeenth Sunday after Pentecost**
Habakkuk 1:1-4; 2:1-4; 2 Timothy 1:1-14; Luke 17:1-10

October 12: **Eighteenth Sunday after Pentecost**
Ruth 1:1-19a; 2 Timothy 2:1-13; Luke 17:11-19

October 19: **Nineteenth Sunday after Pentecost**
Genesis 32:22-30; 2 Timothy 3:14-4:5; Luke 18:1-8

October 26: **Reformation Day**
Revelation 14:6-7; Romans 3:19-28; John 8:31-36

THIRD PARTY CHECK DONATIONS TO PEACE



Please note that as of September 15, the church will no longer be able to accept third party check donations on behalf of other organizations such as Green Park Lutheran School, KFUD Radio (this does not include our Peace KFUD Live Broadcast Sponsorships), Feed My People, Pregnancy Help Center, Lutheran Hour Ministries, LCMS, etc. Check donations to other organizations should be made payable to the organization and mailed to the organization's address. This change ensures charitable donations are done in accordance with IRS requirements. The church will still accept donations for church related and dedicated funds such as LHSS/Green Park Scholarship Fund, St. Trinity, Alaska Mission, Social Ministry, Special Music, etc., as well as all other church related budget line items; General Budget, RFNG, Special Music, etc. This change is for external organizations only. If you would like a full list of General and Dedicated accounts, please contact the church office.

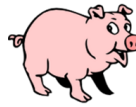
Any questions regarding this change, please contact Denise Grant via email at finance@peacelutheransti.org or by phone at 314-591-8207.

80TH ANNIVERSARY CELEBRATION



Join us as we celebrate **80** years of blessings at Peace with a special Anniversary Worship Service at 3:00PM, with Guest Preacher, Rev. Todd Wilken, followed by social hour and dinner at Andre's Banquet Center. Invitations can be found in your family mailbox with additional details and an RSVP form. **Reservations are due to the church office by October 12.** We hope you can join us as we celebrate and give thanks to God for our 80 years of blessings at Peace!

PEACE MEN'S CLUB 58TH ANNUAL SAUSAGE DINNER



Sunday, October 19

10:30AM - 5:00PM (Carry-out)

11:00AM - 5:00PM (Dine-in)

Tickets are on sale now at the Commons counter between services, or the Church Office. Adults are \$13, Children ages 5-12 are \$5.00, and children under five are free. Bulk Sausage also available for purchase.

Come enjoy some fresh sausage, mashed potatoes, green beans and sauerkraut! Desserts will be available for purchase, provided by LWML Ladies Guild. Watch the News and Notes for ticket sales and other information. All proceeds benefit various Peace programs and local charities.

Can you help at the Sausage Dinner? The sign-up sheet is located on the Commons Counter to volunteer for a shift. For more information, please contact John Hooss at 314-913-3072.

ALL SAINTS' DAY



Please join us on Saturday and Sunday, November 1/2, at the 5:00PM and 10:30AM services as we acknowledge those for whom Peace has conducted funerals in the course of the past twelve months. Everyone is welcome to attend as we contemplate the life in Christ of those who have gone on ahead of us in faith.

VOTERS' ASSEMBLY - NOVEMBER 10



Please join us for our upcoming Voters' Assembly, Monday, November 10, 7:00PM, in **Sanctuary Hall**. All Peace members ages 18 and older are invited to attend.



For more information or questions,
please contact Sandi Akers 314-638-7355

REV. DR. JON FURGESON, SENIOR PASTOR
314-601-1039
pastor.furgeson@peacelutheransti.org

REV. ROBERT BROWN, ASSOCIATE PASTOR
618-580-8817
pastor.brown@peacelutheransti.org

Got an Hour? Show God's Power.
Make an hour of YOUR life count for ALL life!

**LIFE CHAIN SUNDAY, OCTOBER 5
2:00-3:00PM**

Please join us for Life Chain. We will meet at Reinhold Flooring 5429 Telegraph Road at 1:45pm. Life Chain is a visual statement of support for the sanctity of human life from the moment of conception until natural death. During this hour we will silently display signs along Telegraph that promote life, prayer, and peace. Life Chain signs will be provided by the Life Ministry Team. You are welcome to bring a lawn chair if you are unable to stand for an hour.

Following Life Chain we will go to Oberweis for ice cream and fellowship!



OFFICIAL ACTS



BAPTISMS

August 31, 2025 - Henry David Dinkins
September 6, 2025 - *Luca Nash Parker
September 20, 2025 - *Julie Ann G'Sell
September 21, 2025 - Eleanor Katrin Johansson

WEDDING

September 5, 2025 - Ashley Amber Cross and
Tyler Joseph Sneed

FUNERALS

September 9, 2025 - *Mary Ellen Stewart, 99

*Non-Member

ALTAR FLOWERS



Altar Flower orders are received through the Church Office. Arrangements are \$25 each. Please contact the church office at least two weeks in advance.

HOLY COMMUNION WEEKENDS



Holy Communion is offered on the first, third and fifth Sundays of each month. Dates include the weekends of October 4/5, 18/19, and 25/26.

KFUO 2026 PEACE BROADCAST SPONSORSHIPS



Live KFUO broadcasts of the 8:00AM service will air in February, March and April of 2026. Open dates include: February 1, 8, 15; March 1, 22, 29; and April 5, 12, 19, 26. Each year we give our members the opportunity to sponsor the broadcasts in memory of a loved one, in honor of a special occasion, or just to the Glory of God.

Sponsorships are \$150.00 per Sunday. To sign up, please complete the following information and return to the church office. For more information, please contact Alan Hopfer at 314-846-4433.

(Place in offering plate, return to church office or mail)

Name: _____

Phone: _____

Would like to sponsor a service on: (choose date from above):

In honor of / In memory of / To the glory of God: (please circle choice and list name): _____

- Please attach check or cash payment of \$150, payable to Peace •

DIRECTOR OF PARISH MUSIC NOMINATIONS



Nominations are now being accepted for our Director of Parish Music. If you know of someone qualified for the position and would like to submit their information to the Call Committee, please complete one of the forms on the Commons counter and put it in the collection box located in the Commons.

SOCIAL MINISTRY NOTE

OAKVILLE ECUMENICAL BENEVOLENT COLLABORATIVE



Since February, a few churches in the area have gotten together to see how we could better meet the needs of people in the community. Staff and volunteers have met from Faith Lutheran Church, Saint Paul's United Church of Christ, and Peace

Lutheran Church. We discussed how to work together and communicate the needs of people in the area to more effectively assist them.

After working together to help individuals financially, we thought it may be beneficial to have a program for individuals. After months of planning, we recently completed a financial literacy program for individuals identified by Feed My People. The program consisted of four Thursdays, with sessions from 4:00-7:00PM.

- St. Paul's United Church of Christ was kind enough to host the program.
- Staff from Midwest Bank conducted the financial literacy presentations.
- We received a grant for the program's expenses from Lutheran Foundations.
- Child care was provided by church staff from St Paul's and Peace, so that parents could attend.
- After the class, dinner was provided and served by the churches, each church taking one to two sessions.
- Since this a the first-of-its-kind program, we decided to keep the group small; six families attended.
- If an individual attended all four classes, then \$400 would be paid towards a necessary expense, such as utilities or rent.

It was suggested, and decided that for the dinners, we would give each family a crockpot at our initial session. Then each week, we made and served a crockpot meal. We gave the attendees the recipe and all the ingredients to make the same meal at home. We also sent home other groceries like fruit, pasta, and spaghetti sauce, as suggested by Feed My People. All the families were very grateful for the meal, and the food that was sent home each week! During the dinner, we were also able to have discussions about the financial class and their lives in general. The conversations continued, even as we helped them carry their bags of food out to their cars.

Of particular interest was that one Mom brought her two teenage sons to the financial literacy class. It was very encouraging to see two generations being helped in one family. The oldest teenage boy was also very happy to tell me one week how he had made the crockpot meal from the previous week! He was open and talked about his plans for the future.

It was nice to experience working together with other churches, especially Pastor Brandon Boos, Laura, and Karen from Faith and Pastor Mike Roth, Jen, and Kathy from St. Paul's. Angela, from Feed My People was certainly an asset too.

I'm very grateful to those who were involved from our church. Jeanne Hooss, who did childcare and assisted me with providing and serving dinner every week! I also appreciate Jacque McElroy and Debby Stuckmeyer for their delicious contributions of food when Peace was in charge of a dinner.

Since this was a pilot program, lots of planning and effort went into fulfilling this idea. Everyone agreed that the outcome was very good; great financial discussions during the classes, and Christian fellowship during the dinner. As Pastor Mike Roth said, "real connections were made here". My prayer is that the attendees took away helpful financial info and that God's light shined!

-Lisa Santiago, Co-chair Social Ministry

BAPTISM CLASS

SUNDAY, NOVEMBER 16, 9:15 - 10:15AM

KITCHEN MEETING ROOM



Abby Reynolds, our Deaconess Intern will lead the Baptism Class and cover the basic teachings and logistics of baptisms at Peace. This class is designed for all expectant parents. To register, please see the "Sign-Up for Baptism Class" tab on the homepage of our website. If you are unable to attend this class, but desire to have your child baptized prior to November 16, please call the Church Office at 314-892-5610.

2026 Class Dates: February 1 and June 7

SUNDAY SCHOOL NEWS

ROOTED IN CHRIST



Our Sunday School year has been off to a great start! We are so grateful for our Sunday School teachers and substitute teachers who share God's love with our children every week. It has been amazing to see our Parent and Me and Preschool classes just busting at the seams! It is so wonderful to see God's Word being planted in the hearts of our young children.

Parents, you are such an important part of this process. We are excited to have more Family Sunday School days for families to grow in God's Word together! Mark your calendars for these Family Sunday School days coming up this fall:

- October 26 – Reformation Day Family Sunday School
- November 23 – Thanksgiving Family Sunday School

Parents and children 5th grade and under meet in the gym to start our time of learning and family activities. Middle School and High School will meet in their normal classrooms.

Now that the school year is in full swing, Advent will be here before we know it! This is a special time to prepare our hearts to celebrate the miracle of Jesus' birth. In October, your children will begin learning songs for our annual Children's Christmas Program on December 17. Keep an eye out for a sign-up for your child to participate in the Christmas Program! There will be speaking roles and costumed roles. We need parent help with arranging costumes and music practice. If you would be interested in helping, please email us at sundayschool@peacelutheranstl.org.

As a reminder, the Bible Bucks Store is open the first Sunday of the month. I apologize for the mistake in the handout that said the store was open every week! Keep working on your memory and enjoy the Bible Bucks Store!

Blessings in Christ,

Abby Reynolds
Deaconess Intern



SUNDAY SERVICE ON KFUE



Peace's Sunday service is rebroadcast on KFUE AM 850 every Saturday, from 4:00-5:00PM. Please share this information with your neighbors, friends, family, and especially our homebound members.

PEACE EARLY CHILDHOOD



Preschool Plus and Half Day Preschool

Helping the Church Grow by helping God's Children Grow

The school year is off to a fantastic start! Our classrooms are buzzing with excitement as we explore seasonal themes like Fire Safety, Farm Animals, Pumpkins, and the beauty of fall leaves.

During Jesus Time, we'll explore Bible stories that remind us how God rescues, cares for, and provides for His people. Through the stories of Daniel in the Lion's Den, Three Men in the Fiery Furnace, and Noah's Ark, children will discover God's unwavering love and protection.

We are excited to welcome the Mehlville Fire Department for a special visit this month. They will share the importance of fire safety and provide an opportunity for the children to see the Fire Trucks. We're looking forward to an exciting October!

To learn more about Peace Early Childhood programs or employment opportunities, please email Sara Watson at earlychildhood@peacelutheranstl.org or call the Early Childhood office at 314-892-8844.

LUTHERAN HOUR MINISTRIES - DAILY DEVOTIONS

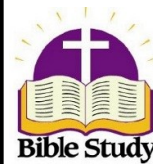
Does your morning coffee need a friend? Lutheran Hour Ministries offers the following ways to receive Daily Devotions.



- Read or listen online: lhm.org/dailydevotions
- Get the app: lhm.org/apps
- Listen on Spotify, Apple Podcasts, Google Podcasts, or iHeartRadio: lhm.org/podcasts

Would you like to receive Daily Devotions to your email every day? Please call LHM at 1-800-876-9880, or subscribe online at lhm.org/dailydevotions.

BIBLE STUDY INFORMATION



Men's Morning Bible Study meets every other Thursday morning (with the exception of holidays) at 7:00AM in Sanctuary Hall. Led by Pastor Brown. The class continues its study of the **Large Catechism**. Upcoming class dates are October 9 and 23. Future Bible study dates can be found on our church website calendar, or watch the weekend News and Notes.

Wednesday Evening Bible Study meets at 7:00PM in Sanctuary Hall. They are currently studying the **Book of Acts**.

Mary Martha Bible Class - Jesus is seeking us while we are seeking Him. Join us each Thursday, at 9:00AM, in the Kitchen Meeting Room for fellowship, with class beginning at 9:30AM, studying the Book of Romans. Learn to bring Him all your needs. God answers prayers. Hebrews 4:16



St. Trinity CEMETERY



Kyle Rieger
Superintendent

Non-Sectarian – Endowed Care
Owned and Operated by Peace Lutheran Church

2160 Lemay Ferry Road
(Lemay Ferry at Reavis Barracks)
St. Louis, MO 63125
314-892-3662

www.sttrinitycemetery.com

Monday – Friday 7:30 – 4:00

Saturday by Appointment Only

ST. TRINITY CEMETERY - ARCHIVES

January 1, 2026, will be the 15th anniversary of Peace Lutheran Church assuming ownership of St. Trinity Cemetery. As we approach this milestone, we will be taking a look at the history of the cemetery. The initial 10 acres of the cemetery purchased in 1863 were the Fredrick and Louis Stunkel farm. The superintendent at that time took up residence in the farmhouse on the property. When the cemetery purchased 25 acres of adjacent land from Albert and Anna Friedrich in 1924, the Stunkel house was wrecked and the superintendent then lived in the Friedrich house. This is the house pictured below, many years later during the Meyer family's tenure as superintendents, and the people pictured are Meyer family members. The house was located in the center of Section 4, in the middle of what is today the garden section. This house was torn down in 1953, and the current office was built just South of where the original Stunkel farm house stood. This change meant that the cemetery had six "old" sections, and now six "new" sections, offering many lot choices. We will look at additional changes to the property over the coming months.

Follow us on Facebook at St Trinity Cemetery or visit our website at www.sttrinitycemetery.com.



ALASKA MISSION DONATIONS & MORE

Did you know that our team collects items year-round to prepare for our summer mission trip? If you would like to help, please see the list of suggested items below. All donations can be placed in the Alaska Mission box in the Commons. Your donations are greatly appreciated.

ALASKA MISSION DONATIONS

ITEMS LISTED BELOW ARE COLLECTED YEAR
ROUND TO SUPPORT OUR JULY MISSION TRIP

*High Priority Needs

- | | |
|-----------------|------------------|
| *Toothbrushes | Bar Soap |
| *Toothpaste | Combs/Brushes |
| *Hats | Shampoo |
| *Gloves/Mittens | *Sewing Needles |
| *Socks | Wash Cloths |
| Ramen Noodles | Dish Towels |
| Band Aids | *McDonald's Toys |
| Chapstick | *Hot Wheels |

Also needed: Hard Candy (no chocolate)

PLEASE PLACE DONATIONS
IN THE ALASKA MISSIONS
BOX IN THE COMMONS

THANK YOU FOR YOUR
PRAYERS AND SUPPORT!

STONIE'S SAUSAGE SALES



Stonie's Sausage begin the weekend of October 4/5 between services and will continue through the end of the year. Watch for our Christmas basket sales coming in late November. All proceeds help us spread the word of Jesus in Hooper Bay, Alaska.

CHANGES TO OUR CAMPUS DOOR POLICY



As our county situation has shifted over the past few years regarding homeless persons, Peace has experienced a considerable uptick in persons off the street coming to the church to beg, loiter, sleep, steal, and even attempt to break into the garage and the campus. Men show up and loiter after services or toward the end of the workday. They show up and wander around outside the doors where parents are picking up their children from daycare to panhandle.

We have asked the County Police to scout our campus more often and they appear to have adopted that request. However, for the safety and security of the Church staff and the children of the Early Childhood Program, we have updated our policy regarding leaving our doors unlocked.

SOME HIGHLIGHTS

Unless other events are going on, the doors will be locked on Sundays until at least 5:30AM and locked again soon after the final service of the day. Likewise, on Saturdays, the doors will be locked until at least 3:00PM and locked again soon after the service is completed. During the weekdays, the East doors should only be opened from 8:00AM–5:00PM unless other activities require them to be open. If no one is on campus, the doors will be locked. For events and clubs, the doors should be unlocked only as long as the situation reasonably warrants. If our office personnel or other groups comprised of only females are present, they have the right to lock the exterior doors even during the weekday work hours. If you do not have a key and find the doors locked, please use the intercom to see if a person is in the office to let you in. All persons that we know with an assigned key to the church will receive a copy of the full door policy in their church mailbox. **This change is effective beginning October 1, 2025.**

-Peace Lutheran Church Council



COMING SOON!

THE 29TH ANNUAL BOAR'S HEAD CHRISTMAS FESTIVAL

2025 Festival Service Dates and Times

Thursday, December 4, 7:30PM

Friday, December 5, 7:30PM

Saturday, December 6, 7:30PM

Sunday, December 7, 2:30 and 6:00PM

FIRST-TIME VOLUNTEERS: Join with many of the veterans to use your God-given time, talents, and creativity! Remember, no task is too small—all are important in this ministry! We are always in need of Hostesses to serve wassail and cookies at the receptions after the services. Look for the Volunteer Form in your mailbox.

SEASONED VETERANS: We hope you will join us again this year. You know we count on you to be our foundation each year with your experience, and you are a tremendous help to newcomers!

FINANCIAL SUPPORT: Door contributions cover about half of the Festival costs. The rest of the Festival expenses are covered by the generous donations of our members. Please consider becoming a financial supporter by filling out the contribution form below. Again, we are deeply grateful to the many Peace members who make the Boar's Head Christmas Festival part of their giving each year. Please note: For your name to be listed in the program, please send in your donation by November 17.

SIX FREE TICKETS PER FAMILY will be available to Peace members after church services on the weekends of October 25/26 and November 1/2. Tickets will be offered to the general public Monday, November 3. Invite your family, friends, co-workers, and neighbors, as we share the good news of Jesus' birth!

Online ticket reservations will be available soon. Watch for a link on the Peace website or a QR Code on the Commons Counter to reserve your tickets beginning in late October!

**2025 Boar's Head
Christmas Festival Contribution Form**

I/we are pleased to make the following contribution:

Name: _____

Benefactor: \$_____ \$25

Ambassador: \$_____ \$50

Patron: \$_____ \$100

Special Gifts: \$_____ \$250

Name(s) as you would like it/them to appear in the program booklet: *(Please print)*

☐ **Please check this box if you DO NOT wish your name(s) to appear in the program booklet.**

To assure that you receive proper credit for your contribution, please enter your Member Envelope or Giving Number. *(optional)* _____

Please make checks payable to Peace Lutheran Church with **"Boar's Head Christmas Festival"** in the memo line. You may attach your check to this form and place it in the offering plate or bring to the church office. For more information, please contact Ralph & Grace Truemper at 314-544-0233. Thank you for your support!

MARRIED COUPLES CLUB

Come celebrate Oktoberfest Saturday, October 11, 6:00PM at church. Cost is \$10.00 per couple. We will provide brats, sauerkraut and beverages. We ask that you bring a side dish or dessert to share. Please also bring your lawn chairs, we are hoping to be outside. RSVP to Rick or Tammy Goodman at 314-546-9943 by October 8. Our November Event is Bunco Night on Saturday November 8, 6:00PM at Peace. Watch for more information in the News & Notes.

LADIES CLUB

If you have visited any doctor's office lately, you may have noticed signs in the patient rooms and restrooms giving you a number to report human trafficking. Did you know that human trafficking isn't just sexually related? Trafficking can also include housework, farming or other activities that the person is unable to safely leave, involving people of all ages. Last year, St. Louis was number one in human trafficking. We are now ranked four; and we have a long way to go!

Monarch Jewelry is a brilliant way to bring awareness to fight against human trafficking. Join us at Ladies Club, Tuesday, October 21, 7:00PM to hear their story, how they came about, and what they do daily to help these folks get out of a horrendous situation. Monarch will also have a huge variety of homemade jewelry and home décor for purchase. All proceeds goes to help fight human trafficking.

From September 27 - October 21, Ladies Club will be collecting old and broken costume jewelry (working or not), rings, and watches to benefit Monarch Jewelry. The jewelry will be repurposed to raise funds to work against sex trafficking and child sex exploitation. Donations may be placed in the basket located on the Commons counter.

Ladies Club is sponsoring a Sock Drive beginning October 11, and continuing through October 19. This collection is an effort to provide socks to Veterans and people in need. Any new socks for men, women or children will be greatly appreciated. All donations may be placed in the box located in the Commons.



PLASTIC MAT MAKING

Our group meets on the first and third Tuesdays each month, from 9:00AM to noon in Sanctuary Hall. We would love to have more helpers. If you don't crochet, you can help fold, cut or loop the plastic bags. Can't make it on Tuesdays? We can show you how to work from home! For more information, please contact Anita Thomas at 314-200-6753.

LWML-LADIES GUILD

Please join us Thursday, October 16, from 10:45AM to noon, in Sanctuary Hall for our monthly meeting. Our guest speaker is Deaconess Intern, Abby Reynolds. All women are welcome to join us for fellowship and for support of our mission projects.

NEWSLETTER SPONSORS

Many thanks to our members and friends for their sponsorship. If you would like sponsorship information, please contact the church office.

ADULT CO-ED VOLLEYBALL AT PEACE

Play will resume on Tuesday, September 30, from 6:00-8:00PM in the gymnasium. Co-Ed volleyball is open to anyone 18 years and older. For more information please contact Cameron Stinnett at 314-413-3412 or camstinn16@gmail.com.

PICKLEBALL OPEN PLAY AT PEACE

Adult co-ed Pickleball plays on Sunday evenings, 6:00-8:00PM in the gymnasium. The group is open to all levels of experience, ages 17 and older, with equipment and training provided. Please watch the church calendar for event conflicts to make sure we are playing. For more information please contact Jack Jeffcott at liporccarman@gmail.com or 314-856-5379.

SURVIVING SPOUSES BREAKFAST

Join us Thursday, October 8, 9:00AM at the Denny's on South Lindbergh. Our group meets on the second Thursday of each month. For more information, please contact Joyce Schutte at 314-267-7051.

QUILTERS CORNER



Please join us on Tuesdays from 9:00AM to 2:00PM in Sanctuary Hall. Bring a sack lunch, we'll provide fellowship and dessert! Please be sure to stop by and see us at our Annual Sale at the Sausage Supper, Sunday, October 19.

Please call Cheryl at 314-223-0744 if you have any questions.

Quilters know when to hold'em and when to fold'em!

MISSIONARY NEWS



The current newsletter from Pastor Jensen serving in Germany can be found on our Peace Website or the Bulletin Board in the Commons. If you would like to support the missionary efforts of Pastor Jensen, please direct your contributions to "Synodical Missionary Support" at Peace, or directly through the LCMS website.

MEN'S CLUB

Please join us Tuesday, October 28, at 6:00PM for our monthly meeting. Enjoy a great meal and fellowship, followed by our meeting. Men's Club is open to all men of Peace, 21 and up! For more information, please contact John Hooss at 314-913-3072.

PROPERTY - BUILDING KEY INVENTORY



The Property Team is taking an inventory of all church keys that have been handed out. If you are in possession of a church key, please contact John Hooss at 314-913-3072 so he can record your name and key number for our records. Thank you!

REFIT - LOOKING FOR A FUN WAY TO WORKOUT?

Come join us for FIT and Rev+Flo on Tuesday mornings at 9:00AM in the gym at Peace. FIT combines powerful moves and positive music to create a fun workout for all ages. Rev+Flow increases strength, builds muscle and mobility. See what your body can do - you will amaze yourself.



VOLUNTEER AT FEED MY PEOPLE!

Feed My People is a Christian organization right down the road from Peace that strives to show God's love and compassion to all people, particularly those in need. Feed My People offers several services to help those in need - whether homeless or low-income - including a food pantry, several thrift stores, and assistance with finding and interviewing for employment.



Our congregation continues to support and has been very generous with donations to Feed My People. Join us to volunteer in person, serving with our hands and feet to bring the love of Christ to those in our community. Pastor Brown and/or Abby Reynolds will be volunteering one Saturday morning each month and can bring a small group. Current planned dates are: October 18 and November 15. Please consider joining us! Sign up through the opportunities page on the church website or through the QR code above.

2025 LESA BREW IN THE LOU



The 2025 Brew in the Lou Festival, a Big Blue Spark Production, takes place on Saturday, October 11. Enjoy unlimited samples from nearly 80 tasting and vendor stations, featuring the best local, regional, and national craft breweries, Pfitzer Realty Group, Homebrew Horseshoe, distilleries, wineries, and restaurants—all set along the scenic banks of the beautiful Francis Park Lily Pond. Experience live music throughout the day, delicious food, and plenty of surprises! General Admission includes unlimited beer and food tastings (while supplies last) and a commemorative tasting glass to take home. Sign up today at <https://brewinthelou.com/>

The Lutheran Elementary School Association (LESA) equips Lutheran schools, families, and communities with resources to build God's kingdom. For the 2025-2026 school year, LESA will support 54 students at Green Park Lutheran School with a total of \$34,050 in tuition assistance. LESA is pleased to assist families with cost of tuition at Green Park and support the next generation of Christian leaders.

SOCIAL MINISTRY - 2025 ADOPT A FAMILY



Thank you to our Peace families for your many years of faithfully adopting families! We will once again be participating in the Feed My People Adopt-A-Family program. Your support of this program makes the holiday season bright by giving many a chance to acquire needed items and gifts for Christmas. This year, they are again asking for Gift Cards only. If you would like to participate, please contact Joyce Sorth at 314-435-2694, by November 1, and let her know what size family you would like to sponsor. The family size you adopt can be from one to seven plus. You will receive your family information in your church mailbox by mid-November. This will allow Feed My People the time to interview clients and make sure they have enough participants. Gift card drop off dates are December 1-3, 10:00AM to 3:00PM to Feed My People, 171 Kingston Drive.

On behalf of the Social Ministry Team at Peace, we thank you for your generosity and support!

LIFE MINISTRY— A MESSY LIFE



She reminded me of Princess Diana when I first met her: young, beautiful, with a radiant smile that lit up the room and a personality to match. That was before the accident. She miraculously survived a natural gas explosion that covered 90% of her body with third degree burns. Three dozen reconstructive surgeries over the years still left her massively scarred. But the deepest scars were mental and emotional. Over the years, she struggled with alcoholism, drug abuse and mental illness.

Like Princess Diana, her life was recently cut short by a car accident at age 57. Her funeral was on a beautiful August morning. The church was full of people who loved her and respected her courage to keep on going. Two beautiful daughters shared their memories of a mom who did her best for them, in spite of her shortcomings. Many friends from AA and Bible studies were there as well. She had a very messy life, full of pain and defeats as well as triumphs and joys. The celebration of her life was a testimony to the positive impact she had on so many people.

The same day as the funeral, I read an article stating that between 1997 and 2011, the Gen Z age group, 19.5 million babies were aborted. That's close to three in ten pregnancies. For every two young people between the ages of 14 to 28 years, another young person is missing. Their mothers did not want a messy life complicated by an unplanned pregnancy. They chose what appeared to be the easier path which allowed them freedom to pursue career or education plans while avoiding the expense and effort it takes to raise a child. Who wants a messy life?

We enjoy the energy, optimism and vitality that young people bring to our families and society. Unfortunately, we will never know the three in ten young people who lost their lives to abortion in this generation. There will never be a celebration of their lives, because their moms chose fulfillment or convenience over a messy life. One has to wonder what joys these women missed over the years. How would our society have been changed with these 19.5 million young people? We'll never know.

Jesus lived a messy life. He was born into poverty, with the stigma of illegitimacy. Many ridiculed him or accused him of being crazy or evil. He was abandoned by his closest companions, tortured and humiliated in the worst possible manner. Ultimately, he suffered God's full wrath against our sins and was abandoned by His Heavenly Father on that cross. It doesn't get any messier than that. But he chose to do so because we live in a messed-up world, full of people with messy lives. He loves us enough to share all of our failures and even use them to touch other people deeply. Thank God that He uses messy lives to touch others positively.

"Through the love of Jesus Christ the Life Ministry Team exists to equip Peace Lutheran Church to sanctify life at all stages"

Peace Life Ministry Team



Green Park is searching for a Director of Development and Donor Relations. The Director of Development and Donor Relations will play a vital role in advancing the mission and vision of Green Park Lutheran School by building and nurturing strong relationships with donors, alumni, church and community partners. This position is responsible for leading the school's donor development strategy,

including annual giving, major gifts, capital campaigns, alumni engagement, and donor stewardship. <https://greenparklutheralschool.org/were-hiring-director-of-development-and-donor-relations/>

- Our first Stay N Play of the school year is October 9, in the GPLS gym from 8:30-10:30AM. Free open gym play time for children 5 & under accompanied by an adult.
- Eat & Earn at Culver's South County on Tuesday, October 14 from 5:00-8:00PM and Qdoba on Tuesday, November 11, from 4:00-8:00PM.
- Come see our Middle School Play, Madhouse! Friday, October 17, 6:00PM in the GPLS gym.
- Viking Fest - Saturday, October 18, at GPLS

Find out what makes us the best private elementary school in South St. Louis County where our students are known, loved, and valued. Interested in a Christian education for your child? Private tours are scheduled year-round. To schedule a tour or for more information, please contact Katie Gaeta at katie.gaeta@greenparklutheralschool.org or call 314-544-4248. Be sure to follow us on Facebook and Instagram to see frequent updates about Green Park students and staff.



The mission of Green Park is to welcome and care for all families with the love of Jesus and to academically prepare children in a challenging and enriching environment.




Both the girls and the boys cross country teams had an impressive start to their season, bringing home two first-place plaques. On the boys' side, the team dominated the competition at the Sullivan Invitational with 1st, 2nd, 3rd and 9th place finishes. The girls' team secured a hard-fought victory, winning by just one point with finishes in 2nd, 4th, 7th, and 10th place. It was a strong showing for both teams and a great way to open the season.



New season, new look. Our football players have enjoyed our new and improved locker rooms this season!

Junior Mara Queen was selected for the All-Stars combo at Jazz St. Louis' JazzU program this year. JazzU places talented middle and high school musicians in small jazz ensembles to focus on improvisation, combo playing, jazz repertoire and music theory. The Jazz St. Louis All-Stars comprises the top students in the JazzU program. The ensemble will play at events throughout St. Louis and will tour as the Jazz St. Louis Ambassadors.



We are excited to be offering a new strings class this year! Students who play violin, viola, cello, or bass have the opportunity to make music together during the school day with the String Ensemble. They will perform alongside the LuSo choirs and bands at concerts throughout the school year.

Our cheerleaders performed at Busch Stadium before the Cardinals game last month!

Girls in kindergarten through 8th grade are invited to join the Lancerettes on Sunday, October 5, from 1:00-2:30PM. Mini Lancerettes will learn a dance routine to be performed during halftime of the Lutheran South varsity football game vs. MICDS on Friday, October 10, at 7:00PM. The cost is \$30 and includes a shirt to wear for the big performance. Register at <https://www.lslancers.org/events>.



Middle school girls and their families are invited to join us for a Dig Pink volleyball game at 6:00PM on Tuesday, October 9 vs. Rockwood Summit High School. Join us as we support breast cancer awareness. Please register your middle schooler for this free event to receive your Dig Pink T-shirt. <https://www.lslancers.org/events>.



TONY CABANELLAS RECORD DEALER

314.821.7466

Buys and Sells:

45s ~ 78s

Albums

Also buying Comic Books



IMPORT AUTO

Specializing in Toyota service.

Jim Nieters
General Partner

2200 Lemay Ferry Road • St. Louis, Missouri 63125
ph: 314 487 8338 • fax: 314 487 8773
www.importautocenter.com

WHAT'S A SECOND OPINION WORTH?



**THRIVENT
FINANCIAL®**

Connecting faith & finances for good.®

A lot—when it comes to your investments. As a Thrivent Financial Associate, I can look at your portfolio with fresh eyes to determine if it is aligned with your goals.

No matter which way the financial markets are going, together we'll determine whether any changes are needed to help keep your investment plan on track.

**Contact me today for a complimentary
portfolio analysis.**

**2015 WORLD'S MOST
ETHICAL
COMPANIES™**
WWW.ETHISPHERE.COM

Thrivent Financial was
named one of the "World's
Most Ethical Companies"
by Ethisphere Institute
2012-2015.



Nate Schmoll
Financial Associate
South St. Louis Group
12300 Old Tesson Road
St. Louis, MO 63128
314-330-8037



Andy Reinitz
Financial Advisor
South St. Louis Group
12300 Old Tesson Road
St. Louis, MO 63128
314-578-7005

Securities and investment advisory services are offered through Thrivent Investment Management Inc., 625 Fourth Ave. S., Minneapolis, MN 55415, a FINRA and SIPC member and a wholly owned subsidiary of Thrivent Financial, the marketing name for Thrivent Financial for Lutherans, Appleton, WI. Thrivent Financial representatives are registered representatives of Thrivent Investment Management Inc.

For additional important information, visit Thrivent.com/disclosures.

Appleton, Wisconsin • Minneapolis, Minnesota
Thrivent.com • 800-847-4836

28506 N7-15

VOLUNTEER & SIGN-UP OPPORTUNITIES



Looking for ways to volunteer and get involved? Please visit our Peace website and click on the "OPPORTUNITIES" button on the top banner of the homepage. It will take you to our Portal Page which details all of our upcoming events and sign-ups that we have available.

CURRENT SIGN-UPS AVAILABLE

- **Baptism Class**
- **Greeters**
- **Altar Guild**
- **Ushers**
- **Feed My People Volunteers**

For questions or assistance with sign-ups, please contact the church office.

Susie Sneed
Independent Beauty Consultant

www.marykay.com/SSneed2

314-882-2325

susiesmarykay@gmail.com

ADVANCED COLOR CONSULTANT

MARY KAY



Twin City TOYOTA

Todd Schutte, GM

twincitytoyota.com

636.931.0555

KUTIS

FUNERAL HOME INC.
SERVING ST. LOUIS COUNTY

Family Owned and Operated
PREARRANGED FUNERAL PLANS
CONVENIENT LOCATION TO SERVE YOU



5255 Lemay Ferry Rd. at Butler Hill Rd.
St. Louis, MO 63129

(314) 894-4500



MEMBERS OF
LOCALLY OWNED
FUNERAL HOMES

YOUR NEIGHBOR
IN SO. COUNTY

Join us for Fellowship Time

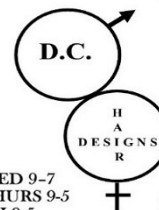
Every Sunday
at 9:00AM
in the
Commons



DENNY AND COMPANY
FAMILY HAIR CARE CENTER

HAIR DESIGNS BY
JAN MEISTER

20% Discount on all
services.



WED 9-7
THURS 9-5
FRI 9-5
SAT 9-3

4245 REAVIS BARRACKS RD
ST. LOUIS, MO 63125
PHONE: 314-631-5158

REAL NUTRITION REAL SIMPLE

juiceplus+



KRISTIN ENGLE

(314) 852-2200
Engle.JuicePlus.com



Interested in...

ONLINE GIVING?

Scan this QR code or click on
"Online Giving" on our
Peace website.



Questions? Contact
Denise Grant @ 314.591.8207
or email finance@peacelutheranatl.org



HOUSE CLEANING

By Debbie
"A Clean Home Is A Happy Home"

Debbie Laferney
314-240-5121

GENERAL HOUSE CLEANING - DUSTING - MOPPING - VACUUMING
KITCHENS - BATHROOMS - BEDROOMS - LAUNDRY
HELP WITH SPRING CLEANING & MUCH MORE

FREE ESTIMATES • DEPENDABLE, TRUSTWORTHY AND RELIABLE SERVICE • REFERENCES AVAILABLE

STEPPING OUT IN FAITH

An exercise
opportunity at Peace

Mondays & Fridays ~ 8:00 - 9:00AM

If the weather is nice, we walk outside - otherwise, we walk in the gym



It's time for the
LADIES GUILD

SALEM LUTHERAN
CHURCH AND SCHOOL



**TUESDAY,
OCTOBER 14, 2025
4 - 7 PM**

**-AND- WEDNESDAY, OCTOBER 15, 2025
8 AM - 3 PM**

IN THE FELLOWSHIP HALL OF
Salem Lutheran Church

8343 Gravois Road - Affton, MO 63123

Donations of rummage are welcome beginning September 29th
during normal business hours, 8 AM - 4 PM, Monday - Friday.

Call the church office at 314-352-4454 with any questions.

PEACE LUTHERAN CHURCH

737 Barracksview Road
Saint Louis, Missouri 63125
314.892.5610
office@peacelutheranstl.org

October 2025 Issue

SAUSAGE DINNER

Sunday, October 19

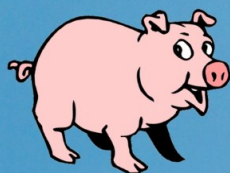
Carry-out starts at 10:30am

Dine-in starts at 11:00am

Serving ends at 5:00pm

Fresh, Cafeteria-Style
All You Can Eat Dinner

Adults - \$13.00 ~ Children (5-12) - \$5.00 ~ Under 5 - FREE



**COME AND ENJOY GOOD
FOOD AND FELLOWSHIP!**

