





THE BETHANY BROADCAST

 4644 Clark Ave.
Long Beach, CA 90808
 (562) 421-4711
 bethanylutheran.org
 Bethany.Long.Beach
 @BethanyLutheran
LongBeach

God's Comfort and Peace to

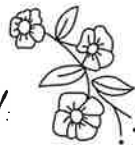


the family and friends of Roger Crabb who went home to his heavenly father on June 27th. His memorial service will be held Friday, July 18th at 11 am at Bethany Lutheran.

May the love of God surround you, offering comfort and peace in the midst of sorrow.

TODAY'S FLOWERS ARE GIVEN

to the glory of God:



In celebration of 50 years of marriage for Dan and Mary Kay Esswein

- from Krista & Aaron Ophaug, Julia & Cole and Matt & Sarah Esswein, Nora, Juniper, and Evie (and Brianna from the cloud of witnesses in heaven!)



May God bless your marriage today and always!

PLEASE PRAY FOR:

Julie Cole

Kevin Dart

David Gamble

Betty Greene

Tony Harman

Lynda Kernohan

Phyllis Lee

Larry Neasel

Christy Pierce

Mike Pierce

Suzanne Reed

Kat Totten

Eno Uti



Worshiping Faithfully Hebrews 10:25



SUNDAY MORNING WORSHIP AND BIBLE STUDY SCHEDULE

SERVICE SCHEDULE:

8 am • 9:30 am • 11 am

COMMUNION SCHEDULE:

1st Sunday: all services

2nd Sunday: 9:30 am only

3rd Sunday: all services

4th Sunday: 9:30 am only

BIBLE STUDY SCHEDULE:

"Lessons of the Day" will be taking a break for the summer. Look for it returning sometime in the Fall.

Women's and Men's studies will be led by congregational members at 10:45AM. Location varies. Please contact the church office for more information.

BETHANY CYPRESS CAMPUS (HOLY CROSS)

Exciting new updates: The chancel has been poured, altar, font, lectern are in the works. Patio cover is scheduled for installation this week and AV begins the end of June.



PASTORAL CALL *announcement!*



Nominations for the position of Associate Pastor of Connect Ministry transitioning to Senior Pastor are officially open. Please use the QR code or the URL below to submit your nomination (or a paper form can be found in the church office).

<https://bit.ly/pastoralnomform>

Please submit your form online or in-person by July 31st.



Serving Passionately Ephesians 2:10

Introducing:

SERVANT LEADER TEAM: SPIRITUAL LIFE

WHAT IS SLT: SL?

Bethany's restructured constitution revises elder responsibilities into a new model - the Servant Leader Team: Spiritual Life. This team supports ministry staff and congregational worship through spiritual service, training, and theological study.

2

YEARS OF COMMITMENT



VOLUNTEER
BASED / NOT
ELECTED

CHAIR:

APPOINTED
AFTER SPRING
VOTER'S
MEETING

CO-
CHAIR:

APPOINTED
(1 PER TEAM)

Gathered Connected Sent

team one:

ACC: ACOLYTE,
CRUCIFER,
COMMUNION

RESPONSIBILITIES

- assist in distribution of Communion (set up altar/table)
- assist in Baptism liturgy (prepare for the baptism)
- support and train acolytes and crucifers
- support worship staff with planning and logistics
- other duties assigned by worship leaders

4

MEETINGS
PER YEAR

75-90

MINUTES OF
TRAINING

ARRIVE
30

MINUTES BEFORE
ASSIGNED SERVICES



UNLIMITED
OPEN SLOTS

team two:

SOC: STUDY OF
CONFESSIONS

RESPONSIBILITIES

- read and discuss the Lutheran Confessions with pastoral staff
- support doctrinal clarity and theological growth
- be familiar with all Bible study opportunities of the congregation

6

MEETINGS
PER YEAR

75-90

MINUTES
(EACH MEETING)

20

MEMBERS
MAX



APPROVED
1-ON-1 WITH
PASTOR REQUIRED

team three:

PSM: PRAYER &
SUPPORT OF
MINISTRY
STAFF

RESPONSIBILITIES

- form 2-3 person groups to support a staff member
- commit to prayer, encouragement, and personal connection with assigned staff member
- team grows as staff grows

2

YEARLY TEAM
MEETINGS

2-4

YEARLY MEETINGS
WITH ASSIGNED
STAFF MEMBER

20-30

MEMBERS
NEEDED



APPROVED BY
SENIOR PASTOR

Thank you

TO OUR VBS VOLUNTEERS!



VBS Administrator:	Admin. Asst.	Elementary Coordinator:
Kayleigh Lopez	Aimee Coleman	Karl Fink (M & Tu)
Polar Pal Teams:		
Preschool & Kindergarten	Polar Pals Sticky Scripture	Primary Imagination Station
Director: Alissa Brege	Leader: Alicia Arzaga	Leader: Jeanne Ruiz
Closing Circle Leader: Alissa Brege	Asst: Nathan Haro/Lily Warentez	Asst: Robby Hernandez
Closing Circle Music: Mr. Frank	Guitar/Music: Mr. Frank	Helpers:
Tech Asst: Paul Brege		Jean Moyer
Assists: Jameson Steele/Emilee Torres		Susanne Kane
		Samuel Salazar
		Noah Wegman
		Liam Riordan
VBS Kinder (5 yr olds)		
Polar Bear Team		Polar Pals Snack Assistants
Team Leader: Grace DeJongh /	Polar Pals Exploration Station	Debbie Nelson
Lisa Porte (M, Tu)	Leader: Ruth Lopez	Pam Bessolo
Polar Bear Crew #1: Elizabeth Newell	Asst: Jamie Long	Olivia Alvarado
Polar Bear Crew #2: Jenna Wallenman	Asst: Carolyn Barbican	Vivian Wells
Polar Bear Crew #3: Ben Evans		
Polar Bear Crew #4: Jacob Murdoch	Polar Pals Bible Stories	VBS Office:
Helpers - Ezra Anoma / Daniel Evans	Leader: Kevin Kritzer (Wed-Carrie Evans)	Stacy DeVeny
	Asst: Reenie Long / Luke Gorne	Rose Crawford
		Carol Torres
VBS Preschool (4 yr olds)		
Grizzly Bear Team	Polar Pals Glacier Games	Primary Crews-Wild Bible Adventures
Team Leader: Martha Richards	Leader: Anna Erdmann	Leader: Shannon Morgensen
Grizzly Bear Crew #1: Hailey Avila	Asst: Christian Haro	Asst: Trevor Torres
Grizzly Bear Crew #2: Mia Gorne	Asst: Jameson Steele	Asst: Adam Mareniez
Grizzly Bear Crew #3: Anika Morgensen	Asst: Elias Gagne	
Grizzly Bear Crew #4: Fiona Khorrnam	Asst: Max Meir	
Helpers - Shelby Manzo	Bethany Preschool - Polar Pals	Media:
	Lead: Tammy Simpson	Opening/Closing Tech: Seth Moorman
		Tech: Noah Freeman
VBS Preschool (3 yr olds)		Asst: Tristan Duer
Brown Bear Team	2/3 yr olds - titarods Team	Spotlight Tech: Paul Brege
Team Leader: Sarah Belle	Crew Leaders: Bethany Preschool Staff	
Brown Bear Crew #1: Emilee Torres	Miss Erica D., Miss Kristy, Miss Erika R.	Special Thanks:
Brown Bear Crew #2: Katie Darjany	Miss Tabitha, Miss Alicia	Kasey Loya, Solia Erdmann
Helpers - Madison Lott	Miss Lauren, Miss Leticia	-Everyone who cut, glued & painted
	4/5 yr. olds - Huskies Team	things ahead of VBS week
	Crew Leaders: Bethany Preschool Staff	-All who donated materials, money
	Miss Vanessa, Miss Jenn,	-Everyone filling us in prayer
	Miss Elizabeth	THANK YOU!!
		as of 6/24/25 -Subject to changes.

Giving Proportionately Luke 21:1-4

WE GIVE HIM BUT HIS OWN

At Bethany we know that "our stuff is not our stuff!" All that we have, all that we are, is a gift from Him. We also know that giving is a spirit-given compulsion. For Jesus Christ, in whose likeness we are being transformed daily, is the ultimate giver. Your gifts fund ministry that give people Jesus. His words, His promises, His presence, His gifts, His comfort, His strength are given through the gifts you are now giving Him. We thank and honor you for these gifts, because they thank and honor Him! **Questions?** Contact Maraley Shaeffer at mshaeffer@bethanylutheran.org.

THERE ARE MULTIPLE WAYS TO GIVE TO BETHANY INCLUDING:

Online, Text to Give, Online Bill-Pay, US Mail, Offering Box, **and now Apple Pay, Google Pay, Venmo, and PayPal!**



CALLING ALL TECH SUPPORTERS!

Here's something you may not be thinking about: The broadcast and live-worship -aid tech equipment breaks down, goes obsolete, and needs upgrading. Whether you are an in-person-only congregant, an online-only worshipper, a sermon podcast listener-viewer, or a mix of all of them, you can help our in-person and online worship ministry continue to thrive through the gift of technology. You can give a one-time gift, or even choose to include a regular, recurring offering into the 'tech-giving fund!' Use the QR code to get to the online-giving site, or call Maraley in the church office for assistance! Thanks for being a Tech-Supporter!



SUMMER IS IN FULL SWING...

...are you continuing to earn a rebate for tuition or ministry? It is a great time to use gift cards for all of your summer activities - outdoors, sporting goods, movies, travel, eating out, Disney, reading books, streaming & gaming... and don't forget the gas and groceries you will need all summer long! Stop by the Scrip table on a Sunday morning between services or the school office (summer hours / M-F / 9am - 3pm). However, the easiest way to make an impact is to download the RaiseRight app and earn right from your phone with eGift cards and reloadable cards. Scan the QR code at the Scrip table and get started today!



TO LEARN MORE:

Ruth Lopez
BLS Scrip Coordinator
rlopez@bethanylutheran.org
562-420-7783 ext. 58

 RaiseRight.

Community Connections **Acts 2:44**

BETHANY LUTHERAN CHURCH IS *Hiring!*

DIRECTOR OF FINANCE AND OPERATIONS



Bethany Lutheran Church and School is seeking qualified candidates for the position of Director of Finance and Operations. This position will oversee the financial and human resources responsibilities of our organization for both the church and the school, along with overseeing some of our operational functions. This is a full-time benefitted position with an anticipated start date in late Spring 2025.

A full job description is available here:

<https://bit.ly/BethanyDPO>. If you are interested in this position please submit your name, email address, and a brief summary of your qualifications to **jobs@bethanylutheran.org**.

SAVE THE DATE!

BETHANY LUTHERAN FAMILY MINISTRY
KNOTT'S BERRY FARM
meet-up!



SUNDAY, AUGUST 17

TWO GATHERING TIMES:

12:30 - 1:30 pm

5:30 - 6:30 pm

We will meet for lunch and/or dinner breaks and then split off in groups of people who want to go on similar rides.

More info on tickets and meet-up locations to come. Questions? Contact Alissa at abrege@bethanylutheran.org.

CREATIVE CRAFTER'S *retreat!*

JULY 18 - 19

If you are a sewer, quilter, knitter, cross-stitcher, crocheter, scrapbooker, jeweler, painter, woodworker, or all-around crafter and you would love to have some uninterrupted time to finish a project or start something new...this is for you!

We will gather in the Parish Lounge of Friday and craft the day away starting at 10 am. Stay as long as you want but the lights will be on until 10 pm. We will return on Saturday morning from 8 am - 6 pm.

RSVP : Cindy Morlok

562-972-2747

cindylula@twc.com

Anita Armbrust

310-259-4766

dogbigredbear@yahoo.com



new!
**BETHANY
CAMPING
GROUP**

Are you an outdoor enthusiast looking for a group of friendly Lutherans to go camping with? Perfect! We are interested in putting together a Bethany camping group and if you would like to hear more and join in on the fun, please contact Phil Lopez or the church office. The first scheduled camping trip would be Bonelli RV Park in San Dimas - August 1-3, 2025.

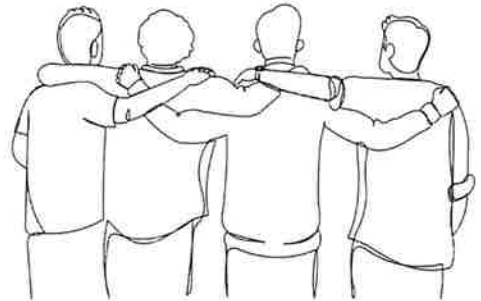
Congratulations **TO OUR GRANT RECIPIENTS!**

The Music Ministry of Bethany Lutheran announces Trinity Alwood & Anika Morgensen as this year's Music Ministry Grant Award recipients. Trinity will be a starting her K-12 Vocal and Choral Music Education student teaching this fall. Bethany has been blessed by her musical gifts in worship services on piano and vocals. She is also one of Bethany Music Academy's much-loved piano instructors. Anika will be entering her sophomore year at Millikan High School. She is a member of the Millikan Chamber Orchestra (violin), sings soprano in our Bethany Choir, and plays violin in Bethany's VBS band. God has filled Trinity and Anika with His good gifts of music; we are blessed to watch Him at work in each of them.

BETHANY LUTHERAN'S ANNUAL MEN'S RETREAT REGISTRATION IS NOW *open!*

A men's retreat is being planned for the weekend of October 3 - 5 at Luther Glen Retreat Center in Oak Glen. This is a wonderful facility that we have used before. The cost for this is \$275 which includes 2 nights and 5 meals. Bedding and towels are provided for our stay. Retreat starts with dinner on Friday and concludes with Worship on Sunday morning. Theme and program being planned. Should you only be able to join us for the day Saturday, cost is \$150 for the full day and 3 meals.

Last day to register is Sunday, September 21st at midnight.



QUESTIONS?

Contact Karl Fink -
kfink@bethanylutheran.org
562.421.4711, ext 19.



DID YOU KNOW THAT YOU CAN HAVE THE BETHANY BROADCAST™ DELIVERED STRAIGHT TO YOUR INBOX?

The Chimes and Bullet now officially share one name: The Bethany Broadcast™. While you may continue to pick up a copy of the print edition as you leave worship each week, an expanded e-edition is also available! This weekly capsule includes worship highlights and big information that your brain may or may not have 'downloaded' from the prior Sunday. The purpose is to bolster you in faith, build you up in the key Biblical themes shared in worship, to bring to mind the important issues on Bethany's plate, and to broaden your awareness of opportunities of service to your Lord, your church, and community.

SCAN ME



UPCOMING YOUTH GROUP DATES!

SCAN THE QR CODE TO LEARN MORE ABOUT OUR YOUTH MINISTRIES AND TO SEE A FULL LIST OF UPCOMING EVENTS!



SCAN ME



QUESTIONS?

CHILDREN & FAMILY MINISTRIES:

Alissa Brege
562.421.4711 ext. 13
abrege@bethanylutheran.org

YOUTH MINISTRIES:

Kayleigh Lopez
562.421.4711 ext.18
klopez@bethanylutheran.org

DO YOU HAVE A PRAYER REQUEST OR DESIRE INFORMATION ABOUT A MINISTRY, MEMBERSHIP, OR ONLINE GIVING?



WOULD YOU LIKE TO HEAR TODAY'S OR A PREVIOUS SERMON AGAIN?

You can hear them as podcasts at
bethanylutheran.org



WANT TO SEE IT AGAIN?

Today's 8 am service will be live-streamed on our YouTube channel:

