

# THE BETHANY BROADCAST

4644 Clark Ave.  
Long Beach, CA 90808  
(562) 421-4711  
bethanylutheran.org  
Bethany.Long.Beach  
@BethanyLutheran  
LongBeach

**THE CHURCH OFFICE  
WILL BE CLOSED**

*Monday, July 21st*



*God's Comfort and Peace to*



the family and friends of Matthew  
Bunnett, son of Tami Bunnett-Buma and  
grandson of Pastor Bob Bunnett, who  
went home to his heavenly father.

*May the love of God surround you, offering  
comfort and peace in the midst of sorrow.*

## **PASTORAL CALL** *announcement*



Nominations for the position of Associate Pastor of Connect Ministry transitioning to Senior Pastor are officially open. Please use the QR code or the URL below to submit your nomination (or a paper form can be found in the church office). *Please submit your form online or in-person by July 31st.*

<https://bit.ly/pastoralnomform>

### PLEASE PRAY FOR:

Nora Borg-Breen

Julie Cole

Kevin Dart

David Gamble

Betty Greene

Tony Harman

Lynda Kernohan

Phyllis Lee

Larry Neasel

Christy Pierce

Mike Pierce

Suzanne Reed

Mike Schliebe

Kat Totten



# *Worshiping Faithfully* Hebrews 10:25



## SUNDAY MORNING WORSHIP AND BIBLE STUDY SCHEDULE

### SERVICE SCHEDULE:

8 am • 9:30 am • 11 am

### COMMUNION SCHEDULE:

1st Sunday: all services  
2nd Sunday: 9:30 am only  
3rd Sunday: all services  
4th Sunday: 9:30 am only

### BIBLE STUDY SCHEDULE:

*"Lessons of the Day" will be taking a break for the summer. Look for it returning sometime in the Fall.*

**Women's and Men's studies** will be led by congregational members at 10:45AM. Location varies. Please contact the church office for more information.

## BETHANY CYPRESS CAMPUS NEWS (HOLY CROSS)

The campus transformation continues....Foundation has been poured, chancel and nave furniture ordered, carpet chosen and ordered, stain glass repairs underway, AV ordered, and wiring etc. installed. The room divider (with movable door and stain glass accents) is under construction and you can see the iron work posts in place below.



# Serving Passionately Ephesians 2:10

Dear Pastor Kritzer and the beloved saints at Bethany Lutheran,

Grace and peace to you from God our Father and from our Lord Jesus Christ.

With a full heart, I write to formally accept your call to serve as Associate Pastor at Bethany Lutheran Church. There are moments when the mercy of God is so evident that it stops us in our tracks. The call you have given to me for Associate Pastor of our church is one of them. It is not simply a new assignment or another chapter in pastoral service, but a gift. Through your call, God is granting me the joy of continuing in the ministry to which He set my hand 3 decades ago. I have anticipated service in the LCMS since I met to talk about the possibility as a 14-year-old with my pastor, Rev. Carl Fischer, at Trinity Lutheran in Bellingham, WA 37 years ago. To return now to the LCMS - to serve the Gospel not only as a pastor but as a son returned home - is something I have only imagined, but for which I give thanks beyond words.

That this call comes through Bethany makes it all the more dear. My family and I have been among you for nearly three years. In that time, you have welcomed us as your own, allowed us time to heal from past hurt, and given us all the opportunity to serve alongside you. During my year-long vicarage, I was not merely observed or instructed, but truly formed - by your worship, your hospitality, your humility, and your trust in God's Word. You've become family to us. To be asked now to serve as one of your pastors is a deepening of something already alive.

Through this call, you are sending me to serve in a broader field - the founding and leadership of Coastal Mission Society, a church planting effort within the Pacific Southwest District. Your willingness to share a pastor in order to extend the reach of the Gospel speaks of unusual generosity and courage. It shows that you do not see this ministry as something to be hidden, but multiplied. This posture of open-handedness, faithfulness, and eagerness for the Kingdom is one of the clearest signs of spiritual health a church can display.

As we step into this work together, I pray our shared ministry will be marked not only by sound teaching and faithful worship, but by zealous and active participation in the mission of Christ. To that end, there are a few hopes I carry:

First, I hope to see each of you embrace your daily vocations as holy callings - whether in the home, the workplace, the neighborhood, or places of recreation. Wherever the Lord has placed you, He sends you as His own for the sake of the Gospel - to serve, to speak, and to, by all means, save some, so that you might share with them in its blessing (Rom. 11:13ff, 1 Cor. 9:22).

Second, when God grants us opportunity, I hope we will not shy away from gathering and inviting those who are being attracted by the Holy Spirit to our message and friendship. I pray we'll patiently and joyfully walk with them, teach them the Word, baptize them in to Christ, guide them into the life of the Church and on toward participation in the Great Commission.

Third, I expect that we will keep our eyes on the horizon. The harvest is not behind us, but ahead. We must continue to encourage, support, and send out harvest workers who'll establish new mission congregations throughout Long Beach and Southern California.

Fourth, we must do all of this not as isolated outposts, but as partners in the Gospel - working together with other churches, pastors, and leaders across Southern California until the good news of Jesus is heard in every corner and by every soul.

Even then, the work is not finished. Not until He returns.

This is the purpose we've been given. Not a quiet retreat, but a shared mission. By the Spirit's power, we will press on together - faithful to the end.

The work has begun, and by God's grace, we will carry it forward together - in your pews and neighborhoods, and in places not yet reached with the good news of Christ.

Thank you for your trust. Thank you for your vision. Above all, thank you for bearing witness to the Gospel not only in what you believe, but in what you are willing to give.

Your in the service of our Risen King,  
John Alwood

# *Giving Proportionately* **Luke 21:1-4**

## **WE GIVE HIM BUT HIS OWN**

At Bethany we know that "our stuff is not our stuff!" All that we have, all that we are, is a gift from Him. We also know that giving is a spirit-given compulsion. For Jesus Christ, in whose likeness we are being transformed daily, is the ultimate giver. Your gifts fund ministry that give people Jesus. His words, His promises, His presence, His gifts, His comfort, His strength are given through the gifts you are now giving Him. We thank and honor you for these gifts, because they thank and honor Him! **Questions?** Contact Maraley Shaeffer at [mshaeffer@bethanylutheran.org](mailto:mshaeffer@bethanylutheran.org).

### **THERE ARE MULTIPLE WAYS TO GIVE TO BETHANY INCLUDING:**

Online, Text to Give,  
Online Bill-Pay, US  
Mail, Offering Box,  
**and now Apple Pay,  
Google Pay, Venmo,  
and PayPal!**



## **CALLING ALL TECH SUPPORTERS!**

Here's something you may not be thinking about: The broadcast and live-worship-aid tech equipment breaks down, goes obsolete, and needs upgrading. Whether you are an in-person-only congregant, an online-only worshipper, a sermon podcast listener-viewer, or a mix of all of them, you can help our in-person and online worship ministry continue to thrive through the gift of technology. You can give a one-time gift, or even choose to include a regular, recurring offering into the 'tech-giving fund'! Use the QR code to get to the online-giving site, or call Maraley in the church office for assistance! Thanks for being a Tech-Supporter!



## **SAVE ON BACK-TO-SCHOOL WITH RAISERIGHT!**

**Major bonus earnings are happening now! July 19 - August 1!**

Earn up to 23% on everything you need for back-to-school shopping. Check your email, the RaiseRight app, or RR on social media (Facebook and Instagram).

Check out the Back-to-School Shopping Guide to browse popular brands, find earning inspiration, and earn more with limited-time bonuses.



### **TO LEARN MORE:**

Ruth Lopez  
BLS Scrip Coordinator  
[rlopez@bethanylutheran.org](mailto:rlopez@bethanylutheran.org)  
562-420-7783 ext. 58



# Community Connections Acts 2:44

## BETHANY LUTHERAN CHURCH IS *Hiring!*

### DIRECTOR OF FINANCE AND OPERATIONS



Bethany Lutheran Church and School is seeking qualified candidates for the position of Director of Finance and Operations. This position will oversee the financial and human resources responsibilities of our organization for both the church and the school, along with overseeing some of our operational functions. This is a full-time benefitted position with an anticipated start date in late Spring 2025.

A full job description is available here:

<https://bit.ly/BethanyDPO>. If you are interested in this position please submit your name, email address, and a brief summary of your qualifications to [jobs@bethanylutheran.org](mailto:jobs@bethanylutheran.org).

## SAVE THE DATE!

BETHANY LUTHERAN FAMILY MINISTRY  
KNOTT'S BERRY FARM  
*meet-up!*



**SUNDAY, AUGUST 17**

**TWO GATHERING TIMES:**

**12:30 - 1:30 pm  
5:30 - 6:30 pm**

We will meet for lunch and/or dinner breaks and then split off in groups of people who want to go on similar rides.

More info on tickets and meet-up locations to come. Questions? Contact Alissa at [abrege@bethanylutheran.org](mailto:abrege@bethanylutheran.org).

## IMPORTANT ANNOUNCEMENT

**THERE WILL BE  
NO GAME DAY  
IN AUGUST.**

**IT WILL RESUME  
SEPTEMBER 2ND  
AT 11 AM IN THE  
PARISH LOUNGE.**

# FLOODING IN TEXAS

*Urgent Aid Needed*



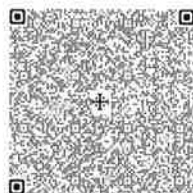
In the early hours of July 4, heavy rains caused the Guadalupe River in central Texas to rise by 25 feet in minutes. As a result, catastrophic flash flooding swept through the Texas hill country, devastating everything in its path. As of July 7, at least 80 people have died, and still more remain missing. The full scope of the damage is still unknown. What we do know is **hundreds of families are in urgent need** of basic supplies as they clean up, recover and navigate immense grief and loss. In these early days, your compassion is providing **Lutheran World Relief Quilts and Kits** as well as distributing emergency **food, water, tarps, clean up kits, hygiene supplies and clothing** to people whose homes were damaged or destroyed. Thanks to your quick compassion, **hundreds of families affected by the recent flooding in Texas had emergency supplies in their hands within 12 hours.**

LWR and our partners continue to assess needs and — with your generous support — will expand our response as we are able. When disaster strikes, we can always count on our generous donors to love your neighbors as Christ. Thank you for your compassion, generosity and continued prayer as relief efforts continue.

If you would like to make a donation to support relief efforts, please use the QR code.



**LUTHERAN  
WORLD RELIEF**



## THE LUTHERAN HOUR

*Updates!*

### LOOKING FOR WAYS TO ENGAGE YOUR CHILD IN FAITH?

Check out the *Gospel Adventures Show!* This kid's audio program uses songs, storytelling, and activities to help kids encounter clear and compelling Gospel themes. Learn more by scanning the QR or wherever you listen to podcasts.

Gospel  
Adventures!



Lutheran  
Hour App!



### HAVE YOU DOWNLOADED THE LHM APP YET?

You can access Lutheran Hour Ministries' Daily Devotions and sermons from **The Lutheran Hour®** (TLH Sermons) on your mobile device by using the LHM app!

- Inspirational Scripture-based messages at your fingertips every day
- Advent and Lenten devotions
- Read the devotion/sermon text or listen to the audio, all in the app
- Project Connect booklets, Bible studies and much more



*new!*  
**BETHANY  
CAMPING  
GROUP**

Are you an outdoor enthusiast looking for a group of friendly Lutherans to go camping with? Perfect! We are interested in putting together a Bethany camping group and if you would like to hear more and join in on the fun, please contact Phil Lopez or the church office. The first scheduled camping trip would be Bonelli RV Park in San Dimas - August 1-3, 2025.

Bethany Lutheran Family Ministries

# Beach Day

Sunday, July 27, 2025  
12:00, Noon at Seal Beach

Bring a picnic lunch and  
your favorite sand & ocean toys.

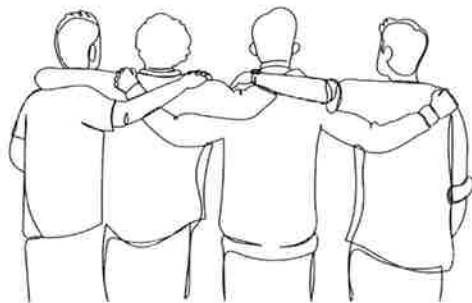
We will meet on the sand,  
just north of the pier.

Questions?  
Contact Alissa @ [albrage@bethanylutheran.org](mailto:albrage@bethanylutheran.org)

## BETHANY LUTHERAN'S ANNUAL MEN'S RETREAT REGISTRATION IS NOW *open!*

**A men's retreat is being planned for the weekend of October 3 - 5 at Luther Glen Retreat Center in Oak Glen.** This is a wonderful facility that we have used before. The cost for this is \$275 which includes 2 nights and 5 meals. Bedding and towels are provided for our stay. Retreat starts with dinner on Friday and concludes with Worship on Sunday morning. Theme and program being planned. Should you only be able to join us for the day Saturday, cost is \$150 for the full day and 3 meals.

Last day to register is Sunday, September 21st at midnight.



### QUESTIONS?

Contact Karl Fink -  
[kfink@bethanylutheran.org](mailto:kfink@bethanylutheran.org)  
562.421.4711. ext 19.



## DID YOU KNOW THAT YOU CAN HAVE THE BETHANY BROADCAST™ DELIVERED STRAIGHT TO YOUR INBOX?

The Chimes and Bullet now officially share one name: The Bethany Broadcast™. While you may continue to pick up a copy of the print edition as you leave worship each week, an expanded e-edition is also available! This weekly capsule includes worship highlights and big information that your brain may or may not have 'downloaded' from the prior Sunday. The purpose is to bolster you in faith, build you up in the key Biblical themes shared in worship, to bring to mind the important issues on Bethany's plate, and to broaden your awareness of opportunities of service to your Lord, your church, and community.



## UPCOMING YOUTH GROUP DATES!

SCAN THE QR CODE TO LEARN MORE ABOUT OUR YOUTH MINISTRIES AND TO SEE A FULL LIST OF UPCOMING EVENTS!



## QUESTIONS?

### CHILDREN & FAMILY MINISTRIES:

Alissa Brege  
562.421.4711 ext. 13  
abrege@bethanylutheran.org

### YOUTH MINISTRIES:

Kayleigh Lopez  
562.421.4711 ext.18  
klopez@bethanylutheran.org

DO YOU HAVE A PRAYER REQUEST OR DESIRE INFORMATION ABOUT A MINISTRY, MEMBERSHIP, OR ONLINE GIVING?



WOULD YOU LIKE TO HEAR TODAY'S OR A PREVIOUS SERMON AGAIN?

You can hear them as podcasts at  
[bethanylutheran.org](http://bethanylutheran.org)



WANT TO SEE IT AGAIN?

Today's 8 am service will be live-streamed on our YouTube channel:

