

THE BETHANY BROADCAST

📍 4644 Clark Ave.
Long Beach, CA 90808
☎️ (562) 421-4711
🌐 bethanylutheran.org
📘 Bethany.Long.Beach
📺 @BethanyLutheran
LongBeach

TODAY'S FLOWERS ARE GIVEN
to the glory of God:

IN CELEBRATION OF 45 YEARS OF MARRIAGE
FOR DICK & CAROLE ADAMS ON JULY 24TH
and

IN CELEBRATION OF 50 YEARS OF MARRIAGE
FOR ROY & PATTY DETWILER ON JULY 28TH

*May the Lord bless your
marriages today and in
all the years to come.*

PLEASE PRAY FOR:

Nora Borg-Breen
Julie Cole
Kevin Dart
David Gamble
Betty Greene
Tony Harman
Lynda Kernohan
Myrna Koenigsdorf
Phyllis Lee
Larry Neasel
Christy Pierce
Mike Pierce
Suzanne Reed
Mike Schliebe
Kat Totten
Eno Uti

PASTORAL CALL *announcement*



Nominations for the position of Associate Pastor of Connect Ministry transitioning to Senior Pastor are officially open. Please use the QR code or the URL below to submit your nomination (or a paper form can be found in the church office). *Please submit your form online or in-person by July 31st.*

<https://bit.ly/pastoralnomform>



Worshipping Faithfully Hebrews 10:25



SUNDAY MORNING WORSHIP AND BIBLE STUDY SCHEDULE

SERVICE SCHEDULE:

8 am • 9:30 am • 11 am

COMMUNION SCHEDULE:

1st Sunday: all services

2nd Sunday: 9:30 am only

3rd Sunday: all services

4th Sunday: 9:30 am only

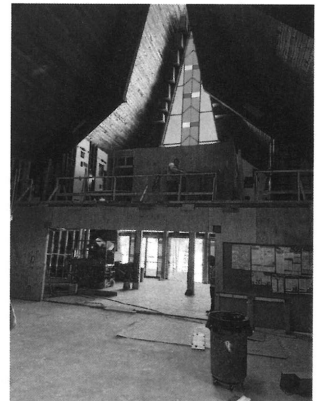
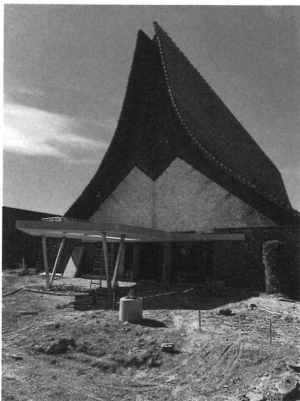
BIBLE STUDY SCHEDULE:

"Lessons of the Day" will be taking a break for the summer. Look for it returning some-time in the Fall.

Women's and Men's studies will be led by congregational members at 10:45AM. Location varies. Please contact the church office for more information.

BETHANY CYPRESS CAMPUS NEWS (HOLY CROSS)

The campus transformation continues....Foundation has been poured, chancel and nave furniture ordered, carpet chosen and ordered, stain glass repairs underway, AV ordered, and wiring etc. installed. The room divider (with movable door and stain glass accents) is under construction and you can see the iron work posts in place below.



Serving Passionately Ephesians 2:10

INSTALLATION OF PASTOR JOHN ALWOOD

Pastor John Alwood has accepted the call to serve as Associate Pastor of Bethany Lutheran Church deployed for the ministry of Coastal Mission Society.

**JOIN US FOR THE INSTALLATION OF PASTOR JOHN
ALWOOD ON SUNDAY EVENING, AUGUST 3RD AT 5:00PM.
DESSERT AND COFFEE RECEPTION TO FOLLOW.**

The work of Coastal Mission Society is carried out in partnership with the Pacific Southwest District for the purpose of raising and training church planters, for the planting of new constituted congregations, and for the establishment of new faith communities connected to existing congregations.

Coastal Mission Society serves as the PSD's church planting ministry along the Coast from the border to Santa Barbara. Bethany is a supporting congregation of Coastal and in partnership with the PSD is the calling congregation of the Director of Coastal Mission Society. The salary of the Director, Pastor Alwood, is funded by a district grant awarded to Bethany. As a supporting congregation, Bethany directs monthly mission support to Coastal and as the calling congregation, Bethany funds Pastor Alwood's Concordia Benefit Plan.

As Bethany's Associate Pastor (deployed for PSD's work-at-large of planting LCMS congregations along the Coast) Pastor Alwood will under the direction of the Sr. Pastor occasionally participate in worship on Bethany's campuses as a preacher or liturgist and potentially as an occasional Bible Study leader and training teacher.



VOLUNTEER OPPORTUNITY

with the Special Olympics of Southern California

WHAT LA County Bowling Competition
WHEN August 9, 2025
WHERE Cal Bowl
2500 E. Carson St.
Lakewood, CA 90713

SCHEDULE

7:30 AM Volunteer Check-in
8:30 AM Delegation Check-in
9:00 AM Opening Ceremony
9:30 AM - 2 PM Competition

AWARDS PRESENTED IMMEDIATELY AFTER COMPETITION

EVENTS OFFERED

Singles, Assisted Ramp, Ramp,
Team Bowling, Unified Team
Bowling

FOR MORE INFORMATION

GAMES INFO

Tracy Belloso
tbelloso@sosc.org
562-502-1123

VOLUNTEER INFO

Letisha Noyes
lnoyes@sosc.org
562-502-1077

FLOODING IN TEXAS

Urgent Aid Needed



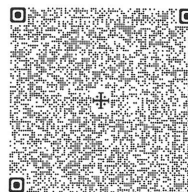
In the early hours of July 4, heavy rains caused the Guadalupe River in central Texas to rise by 25 feet in minutes. As a result, catastrophic flash flooding swept through the Texas hill country, devastating everything in its path. As of July 7, at least 80 people have died, and still more remain missing. The full scope of the damage is still unknown. What we do know is **hundreds of families are in urgent need** of basic supplies as they clean up, recover and navigate immense grief and loss. In these early days, your compassion is providing **Lutheran World Relief Quilts and Kits** as well as distributing emergency **food, water, tarps, clean up kits, hygiene supplies and clothing** to people whose homes were damaged or destroyed. Thanks to your quick compassion, hundreds of **families affected by the recent flooding in Texas had emergency supplies in their hands within 12 hours.**

LWR and our partners continue to assess needs and — with your generous support — will expand our response as we are able. When disaster strikes, we can always count on our generous donors to love your neighbors as Christ. Thank you for your compassion, generosity and continued prayer as relief efforts continue.

If you would like to make a donation to support relief efforts, please use the QR code.



**LUTHERAN
WORLD RELIEF**



Giving Proportionately **Luke 21:1-4**

WE GIVE HIM BUT HIS OWN

At Bethany we know that "our stuff is not our stuff!" All that we have, all that we are, is a gift from Him. We also know that giving is a spirit-given compulsion. For Jesus Christ, in whose likeness we are being transformed daily, is the ultimate giver. Your gifts fund ministry that give people Jesus. His words, His promises, His presence, His gifts, His comfort, His strength are given through the gifts you are now giving Him. We thank and honor you for these gifts, because they thank and honor Him! **Questions?** Contact Maraley Shaeffer at mshaefter@bethanylutheran.org.

THERE ARE MULTIPLE WAYS TO GIVE TO BETHANY INCLUDING:

Online, Text to Give, Online Bill-Pay, US Mail, Offering Box, **and now Apple Pay, Google Pay, Venmo, and PayPal!**



CALLING ALL TECH SUPPORTERS!

Here's something you may not be thinking about: The broadcast and live-worship-aid tech equipment breaks down, goes obsolete, and needs upgrading. Whether you are an in-person-only congregant, an online-only worshipper, a sermon podcast listener-viewer, or a mix of all of them, you can help our in-person and online worship ministry continue to thrive through the gift of technology. You can give a one-time gift, or even choose to include a regular, recurring offering into the 'tech-giving fund!' Use the QR code to get to the online-giving site, or call Maraley in the church office for assistance! Thanks for being a Tech-Supporter!



SAVE ON BACK-TO-SCHOOL WITH RAISERIGHT!

Major bonus earnings are happening now! July 19 - August 1!

Earn up to 23% on everything you need for back-to-school shopping. Check your email, the RaiseRight app, or RR on social media (Facebook and Instagram).

Check out the Back-to-School Shopping Guide to browse popular brands, find earning inspiration, and earn more with limited-time bonuses.



TO LEARN MORE:

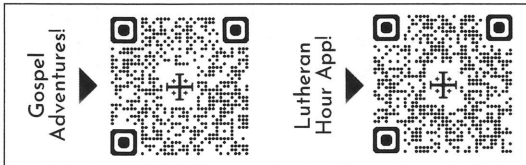
Ruth Lopez
BLS Scrip Coordinator
rlopez@bethanylutheran.org
562-420-7783 ext. 58



THE LUTHERAN HOUR *Updates!*

LOOKING FOR WAYS TO ENGAGE YOUR CHILD IN FAITH?

Check out the *Gospel Adventures Show!* This kid's audio program uses songs, storytelling, and activities to help kids encounter clear and compelling Gospel themes. Learn more by scanning the QR or wherever you listen to podcasts.



HAVE YOU DOWNLOADED THE LHM APP YET?

You can access Lutheran Hour Ministries' Daily Devotions and sermons from **The Lutheran Hour®** (TLH Sermons) on your mobile device by using the LHM app!

- Inspirational Scripture-based messages at your fingertips every day
- Advent and Lenten devotions
- Read the devotion/sermon text or listen to the audio, all in the app
- Project Connect booklets, Bible studies and much more

SAVE THE DATE!

BETHANY LUTHERAN FAMILY MINISTRY
KNOTT'S BERRY FARM



SUNDAY, AUGUST 17

TWO GATHERING TIMES:

**12:30 - 1:30 pm
5:30 - 6:30 pm**

We will meet for lunch and/or dinner breaks and then split off in groups of people who want to go on similar rides.

More info on tickets and meet-up locations to come. Questions? Contact Alissa at abrege@bethanylutheran.org.

**IMPORTANT
ANNOUNCEMENT**

**GAME DAY
WILL RESUME
SEPT. 2ND AT
11 AM IN THE
PARISH
LOUNGE.**

TODAY



Gathered



Connected



Sent



new!

**BETHANY
CAMPING
GROUP**

Are you an outdoor enthusiast looking for a group of friendly Lutherans to go camping with? Perfect! We are interested in putting together a Bethany camping group and if you would like to hear more and join in on the fun, please contact Phil Lopez or the church office. The first scheduled camping trip would be Bonelli RV Park in San Dimas - August 1-3, 2025.

Bethany Lutheran Family Ministries

Beach Day

Sunday, July 27, 2025
12:00, Noon at Seal Beach

Bring a picnic lunch and
your favorite sand & ocean toys.

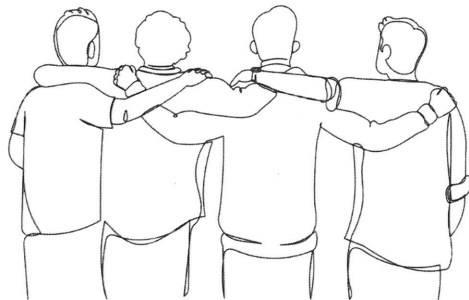
We will meet on the sand,
just north of the pier.

Questions?
Contact Alissa @ albrege@bethanylutheran.org

BETHANY LUTHERAN'S ANNUAL MEN'S RETREAT REGISTRATION IS NOW *open!*

A men's retreat is being planned for the weekend of October 3 - 5 at Luther Glen Retreat Center in Oak Glen. This is a wonderful facility that we have used before. The cost for this is \$275 which includes 2 nights and 5 meals. Bedding and towels are provided for our stay. Retreat starts with dinner on Friday and concludes with Worship on Sunday morning. Theme and program being planned. Should you only be able to join us for the day Saturday, cost is \$150 for the full day and 3 meals.

Last day to register is Sunday, September 21st at midnight.



QUESTIONS?

Contact Karl Fink -
kfink@bethanylutheran.org
562.421.4711. ext 19.



DID YOU KNOW THAT YOU CAN HAVE THE BETHANY BROADCAST™ DELIVERED STRAIGHT TO YOUR INBOX?

The Chimes and Bullet now officially share one name: The Bethany Broadcast™. While you may continue to pick up a copy of the print edition as you leave worship each week, an expanded e-edition is also available! This weekly capsule includes worship highlights and big information that your brain may or may not have 'downloaded' from the prior Sunday. The purpose is to bolster you in faith, build you up in the key Biblical themes shared in worship, to bring to mind the important issues on Bethany's plate, and to broaden your awareness of opportunities of service to your Lord, your church, and community.



UPCOMING YOUTH GROUP DATES!

SCAN THE QR CODE TO LEARN MORE ABOUT OUR YOUTH MINISTRIES AND TO SEE A FULL LIST OF UPCOMING EVENTS!



QUESTIONS?

CHILDREN & FAMILY MINISTRIES:

Alissa Brege
562.421.4711 ext. 13
abrege@bethanylutheran.org

YOUTH MINISTRIES:

Kayleigh Lopez
562.421.4711 ext. 18
klopez@bethanylutheran.org

DO YOU HAVE A PRAYER REQUEST OR DESIRE INFORMATION ABOUT A MINISTRY, MEMBERSHIP, OR ONLINE GIVING?



WOULD YOU LIKE TO HEAR TODAY'S OR A PREVIOUS SERMON AGAIN?

You can hear them as podcasts at
bethanylutheran.org



WANT TO SEE IT AGAIN?

Today's 8 am service will be live-streamed on our YouTube channel:

