






THE BETHANY BROADCAST

-  4644 Clark Ave.
Long Beach, CA 90808
-  (562) 421-4711
-  bethanylutheran.org
-  Bethany.Long.Beach
-  @BethanyLutheran
LongBeach

CHURCH OFFICE HOURS *Update!*

OUR OFFICE HOURS ARE CHANGING!

Starting Monday, August 25th our new hours will be:

MONDAY – THURSDAY 8 AM – 12 PM
CLOSED ON FRIDAYS



Please also note: The church office will
be closed the week of August 18 - 22.

Thank you for your understanding!

PLEASE PRAY FOR:

Nora Borg-Breen
Julie Cole
Kevin Dart
David Gamble
Betty Greene
Lynda Kernohan
Myrna Koenigsdorf
Phyllis Lee
Larry Neasel
Christy Pierce
Mike Pierce
April Pulliam
Suzanne Reed
Mike Schliebe
Kat Totten
Eno Uti

TODAY'S FLOWERS ARE GIVEN
to the glory of God:



IN CELEBRATION OF 27 YEARS OF MARRIAGE
FOR DOUGLAS AND ROSE CRAWFORD.

and

IN THANKSGIVING TO GOD FOR 31 YEARS OF
MARRIAGE FOR DAVID AND JANICE AKINS.

*May the Lord bless your marriages
today and in all the years to come.*



Worshiping Faithfully Hebrews 10:25



SUNDAY MORNING WORSHIP AND BIBLE STUDY SCHEDULE

SERVICE SCHEDULE:

8 am • 9:30 am • 11 am

COMMUNION SCHEDULE:

1st Sunday: all services

2nd Sunday: 9:30 am only

3rd Sunday: all services

4th Sunday: 9:30 am only

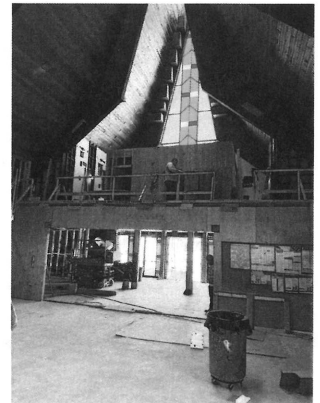
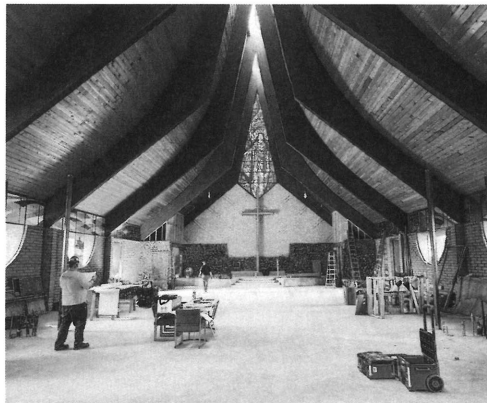
BIBLE STUDY SCHEDULE:

"Lessons of the Day" will be taking a break for the summer. Look for it returning sometime in the Fall.

Women's and Men's studies will be led by congregational members at 10:45AM. Location varies. Please contact the church office for more information.

BETHANY CYPRESS CAMPUS NEWS (HOLY CROSS)

The campus transformation continues....Foundation has been poured, chancel and nave furniture ordered, carpet chosen and ordered, stain glass repairs underway, AV ordered, and wiring etc. installed. The room divider (with movable door and stain glass accents) is under construction and you can see the iron work posts in place below.



Serving Passionately Ephesians 2:10

SERVANT LEADER TEAM: SPIRITUAL LIFE

Team Three!

PSM: PRAYER & SUPPORT OF MINISTRY STAFF

RESPONSIBILITIES

- form 2-3 person groups to support a staff member
- commit to prayer, encouragement, and personal connection with assigned staff member
- team grows as staff grows

2

YEARLY TEAM MEETINGS

2-4

YEARLY MEETINGS WITH ASSIGNED STAFF MEMBER

20-30

MEMBERS NEEDED



APPROVED
APPOINTED BY SENIOR PASTOR



SUNDAY MORNING NURSERY CHILDCARE POSITION OPENING

Do you love kids and love Jesus? We may have just the position for you!

We are seeking a childcare provider to serve the youngest of our Bethany family during our 8 & 9:30 am Sunday morning worship services.

Our nursery team serves in groups of two on Sunday mornings, welcoming our infants and preschoolers to the nursery and engages the kids in age-appropriate play & stories, sharing Jesus, while the service is livestreamed for everyone in the nursery to worship.

The hours are 7:45-10:45 am, approximately two Sunday mornings a month. Candidates must be 18 years old and satisfactorily complete the employment processes. **Please contact Alissa Brege at abrege@bethanylutheran.org for more info or to apply.**



Updates

FROM OUR LCMS MISSIONARIES

NEWS FROM THE RICKMAN FAMILY SERVING IN LATIN AMERICA

Dear Brothers and Sisters in Christ,

*"But grow in the grace and knowledge of our Lord and Savior Jesus Christ.
To him be the glory both now and to the day of eternity. Amen." -2 Peter 3:18*

Greetings in the name of our Lord Jesus Christ who sustains us with His grace as we grow each day in the fear and knowledge of Him. First of all, we want to begin by thanking all of you who invited us into your homes for meals or to spend the night (or many nights) and for all the congregations who invited us to share about God's work in Latin America. After more than five years since our family's last home service right before the pandemic, we really treasured the joyful reunions and time we spent in fellowship with many of you. Your prayers, encouragement and support mean more to us than we can express in words and unite us all in the important work God has set before us. Thank you!!! For those of you we were unable to visit this time, we would be happy to arrange a time to meet and share about God's work via Zoom.

Since returning to Panama the first week in June, things have been a bit of a blur as Arthur had a trip planned a few days after our return, and we scrambled to submit paperwork for the twins' residency visa. Arthur has returned to leading all the services at Redeemer, while Pastor Demetrio and Nuria take some vacation after covering for us while we were in the US. Eva has been preparing the curriculum and practicum for the third cycle of deaconess students who will begin their studies in September, and Arthur has been working on getting things ready to launch the program to all the students using a new online platform. Please pray that everything goes smoothly onboarding the students and that the ladies in all the countries have sufficient internet access to make use of this new tool for accessing their course material. It is a blessing for both of us to observe the growth that has taken place in theological education throughout the region, especially in the last decade with the formation of Concordia the Reformer Seminary, DR.

Rickman Family Update: One of the most amazing highlights of our visits in the USA was visiting Mission Central and getting to meet Mary Anna's pen pal, Mary. It was such a treat to have the opportunity to meet Mary and her family who drove several hours from Nebraska to Mission Central to make the visit possible. It is a joy to see her love for Jesus and her excitement to spread the Gospel. After, our time on the road and a bit of a break from school, our children have also jumped full force back into their studies. Please keep them in your prayers as they try to catch up from a bit of a late start to their school year (school in Panama is from Mar- Dec with a summer break from Jan-Feb).

*In Christ - Arthur and Eva, Bethany, Zoe, Noah, Nathaniel,
Mary Anna, Addy, and Hannah*

Giving Proportionately Luke 21:1-4

WE GIVE HIM BUT HIS OWN

At Bethany we know that "our stuff is not our stuff!" All that we have, all that we are, is a gift from Him. We also know that giving is a spirit-given compulsion. For Jesus Christ, in whose likeness we are being transformed daily, is the ultimate giver. Your gifts fund ministry that give people Jesus. His words, His promises, His presence, His gifts, His comfort, His strength are given through the gifts you are now giving Him. We thank and honor you for these gifts, because they thank and honor Him! **Questions?** Contact Maralee Shaeffer at mshaeffer@bethanylutheran.org.

THERE ARE MULTIPLE WAYS TO GIVE TO BETHANY INCLUDING:

Online, Text to Give, Online Bill-Pay, US Mail, Offering Box, **and now Apple Pay, Google Pay, Venmo, and PayPal!**



EARNING WHILE SHOPPING WITH RAISERIGHT

Summer is winding down but it's not too late to earn on all of your summer adventures when you buy gift cards, shop online through Bethany's RaiseRight program, and dine locally using a linked credit or debit card. The money you're already planning to spend on things like travel, gas, groceries, meals, clothing, and more can help you earn toward tuition or for Bethany ministries. Here's how to earn:

1. **Buy gift cards** from RaiseRight and use them to pay for your everyday expenses. Earn up to 20% back on every gift card purchase from RaiseRight.
2. **Shop online** through RaiseRight—log in to your RaiseRight account, click through to shop directly on a brand's website, and earn upon completing a purchase. Earn twice if you buy a gift card and use it as payment for your online purchase.
3. **Dine locally**—link a credit or debit card in the RaiseRight app and earn 5% every time you dine and pay with that linked card at thousands of restaurants nationwide.

(Tip! Add [RaiseRight's browser extension](#) to your browser so you can get earning reminders while shopping online!)

Haven't joined our RaiseRight program yet? Scan the QR code!



TO LEARN MORE:

Ruth Lopez
BLS Scrip Coordinator
rlopez@bethanylutheran.org
562-420-7783 ext. 58

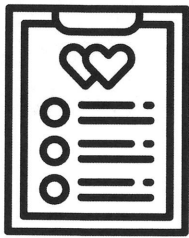


Community Connections: Acts 2:44

WEDDING COORDINATOR POSITION OPENING!

Are you organized, detail-oriented, and enjoy helping couples celebrate one of the most important days of their lives?

We are currently seeking a few people to join our Wedding Coordinator team (paid position). While we host weddings only a few times a year, each one requires thoughtful planning, coordination, and presence on the day of the ceremony.



Responsibilities include:

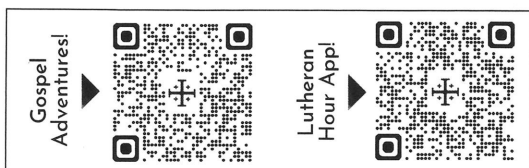
- Serving as the main point of contact for couples getting married at the church
- Coordinating rehearsal and wedding-day logistics
- Ensuring all church guidelines and policies are followed
- Overseeing setup, ceremony flow, and clean-up
- Leading and working alongside an assistant for each wedding

For more information, please contact the church office (kloya@bethanylutheran.org).

THE LUTHERAN HOUR *Updates!*

LOOKING FOR WAYS TO ENGAGE YOUR CHILD IN FAITH?

Check out the *Gospel Adventures Show*! This kid's audio program uses songs, storytelling, and activities to help kids encounter clear and compelling Gospel themes. Learn more by scanning the QR or wherever you listen to podcasts.



HAVE YOU DOWNLOADED THE LHM APP YET?

You can access Lutheran Hour Ministries' Daily Devotions and sermons from **The Lutheran Hour®** (TLH Sermons) on your mobile device by using the LHM app!

- Inspirational Scripture-based messages at your fingertips every day
- Advent and Lenten devotions
- Read the devotion/sermon text or listen to the audio, all in the app
- Project Connect booklets, Bible studies and much more

SAVE THE DATE!

BETHANY LUTHERAN FAMILY MINISTRY
KNOTT'S BERRY FARM

meet-up

SUNDAY, AUGUST 17



TWO GATHERING TIMES:

12:30 - 1:30 pm

5:30 - 6:30 pm

We will meet for lunch and/or dinner breaks and then split off in groups of people who want to go on similar rides.

More info on tickets and meet-up locations to come. Questions? Contact Alissa at abrege@bethanylutheran.org.

NEW GRIEFSHARE SERIES STARTING IN SEPTEMBER

DATES Sundays, starting September 14th

TIME 12:30 - 2:30 pm

PLACE Conference Room

LEADER Karl Fink

562-421-4711 ext. 19

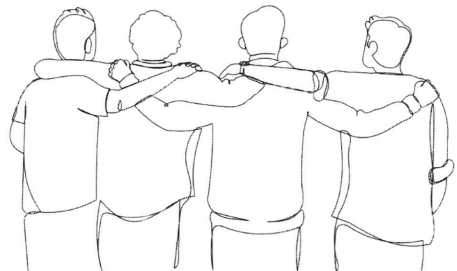
kfink@bethanylutheran.org

If you are experiencing grief in any way, shape, or form, or if your grief has been buried for quite some time, please make an effort to attend this series. There's a nominal fee for the materials, which will be discussed at the first meeting. Griefshare is a 13 week video based series where we watch and discuss as people feel comfortable. If you have questions or concerns, you may contact Karl Fink at the phone number or email listed above.

BETHANY LUTHERAN'S ANNUAL MEN'S RETREAT REGISTRATION IS NOW *open!*

A men's retreat is being planned for the weekend of October 3 - 5 at Luther Glen Retreat Center in Oak Glen. This is a wonderful facility that we have used before. The cost for this is \$275 which includes 2 nights and 5 meals. Bedding and towels are provided for our stay. Retreat starts with dinner on Friday and concludes with Worship on Sunday morning. Theme and program being planned. Should you only be able to join us for the day Saturday, cost is \$150 for the full day and 3 meals.

Last day to register is Sunday, September 21st at midnight.



QUESTIONS?

Contact Karl Fink -

kfink@bethanylutheran.org

562.421.4711. ext 19.



DID YOU KNOW THAT YOU CAN HAVE THE BETHANY BROADCAST™ DELIVERED STRAIGHT TO YOUR INBOX?

The Chimes and Bullet now officially share one name: The Bethany Broadcast™. While you may continue to pick up a copy of the print edition as you leave worship each week, an expanded e-edition is also available! This weekly capsule includes worship highlights and big information that your brain may or may not have 'downloaded' from the prior Sunday. The purpose is to bolster you in faith, build you up in the key Biblical themes shared in worship, to bring to mind the important issues on Bethany's plate, and to broaden your awareness of opportunities of service to your Lord, your church, and community.

SCAN ME



UPCOMING YOUTH GROUP DATES!

SCAN THE QR CODE TO LEARN MORE ABOUT OUR YOUTH MINISTRIES AND TO SEE A FULL LIST OF UPCOMING EVENTS!



SCAN ME



QUESTIONS?

CHILDREN & FAMILY MINISTRIES:

Alissa Brege
562.421.4711 ext. 13
abrege@bethanylutheran.org

YOUTH MINISTRIES:

Kayleigh Lopez
562.421.4711 ext.18
klopez@bethanylutheran.org

DO YOU HAVE A PRAYER REQUEST OR DESIRE INFORMATION ABOUT A MINISTRY, MEMBERSHIP, OR ONLINE GIVING?



WOULD YOU LIKE TO HEAR TODAY'S OR A PREVIOUS SERMON AGAIN?

You can hear them as podcasts at bethanylutheran.org



WANT TO SEE IT AGAIN?

Today's 8 am service will be live-streamed on our YouTube channel:

