

THE BETHANY BROADCAST

📍 4644 Clark Ave.
Long Beach, CA 90808
📞 (562) 421-4711
🌐 bethanylutheran.org
📘 Bethany.Long.Beach
📺 @BethanyLutheran
LongBeach

thank you

PRAYER CHAIN NEWS!

For several decades the Kramers, Reva and Rona, have faithfully facilitated Bethany's prayer chain. We join Jesus in saying, "well done good and faithful servants" as they "retire" from this service at the end of this month.

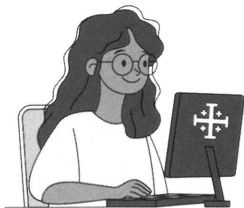


**STARTING IN SEPTEMBER, PRAYER
REQUESTS SHOULD BE SENT TO BOTH
OF THE FOLLOWING ADDRESSES:**

KFINK@BETHANYLUTHERAN.ORG AND
KKRITZER@BETHANYLUTHERAN.ORG

If you, desiring to offer up petitions, intercessions and thanksgivings, are a recipient of Bethany's prayer request emails you'll now be receiving them from kloya@bethanylutheran.org. And if you are not currently a recipient but would like to sign up please send your request to Kasey Loya at the same email.

CHURCH OFFICE HOURS *Update!*



OUR OFFICE HOURS HAVE CHANGED!

Starting tomorrow, Monday,
August 25th our new hours will be:

MONDAY – THURSDAY 8 AM – 12 PM
CLOSED ON FRIDAYS

Thank you for your understanding!

PLEASE PRAY FOR:

Nora Borg-Breen
Julie Cole
Kevin Dart
David Gamble
Betty Greene
Lynda Kernohan
Myrna Koenigsdorf
Phyllis Lee
Larry Neasel
Christy Pierce
Mike Pierce
April Pulliam
Suzanne Reed
Mike Schliebe
Kat Totten
Eno Uti



Worshiping Faithfully Hebrews 10:25



SUNDAY MORNING WORSHIP AND BIBLE STUDY SCHEDULE

SERVICE SCHEDULE:

8 am • 9:30 am • 11 am

COMMUNION SCHEDULE:

1st Sunday: all services

2nd Sunday: 9:30 am only

3rd Sunday: all services

4th Sunday: 9:30 am only

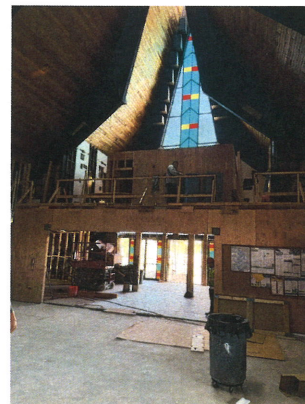
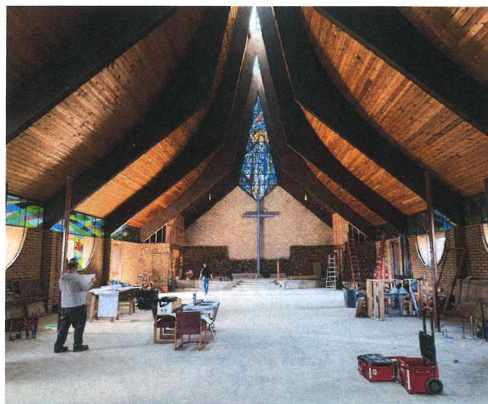
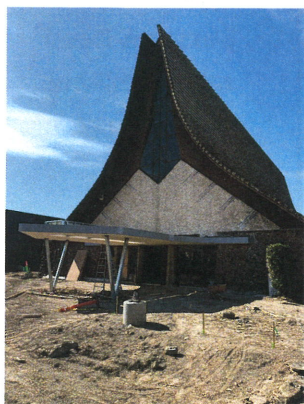
BIBLE STUDY SCHEDULE:

"Lessons of the Day" will be taking a break for the summer. Look for it returning sometime in the Fall.

Women's and Men's studies will be led by congregational members at 10:45AM. Location varies. Please contact the church office for more information.

BETHANY CYPRESS CAMPUS NEWS (HOLY CROSS)

The campus transformation continues....Foundation has been poured, chancel and nave furniture ordered, carpet chosen and ordered, stain glass repairs underway, AV ordered, and wiring etc. installed. The room divider (with movable door and stain glass accents) is under construction and you can see the iron work posts in place below.



Serving Passionately Ephesians 2:10

SERVANT LEADER TEAM: SPIRITUAL LIFE

Team Three!

PSM: PRAYER & SUPPORT OF MINISTRY STAFF

RESPONSIBILITIES

- form 2-3 person groups to support a staff member
- commit to prayer, encouragement, and personal connection with assigned staff member
- team grows as staff grows

2

YEARLY TEAM MEETINGS

2-4

YEARLY MEETINGS WITH ASSIGNED STAFF MEMBER

20-30

MEMBERS NEEDED



APPROVED BY SENIOR PASTOR



SUNDAY MORNING NURSERY CHILDCARE POSITION OPENING

Do you love kids and love Jesus? We may have just the position for you!

We are seeking a childcare provider to serve the youngest of our Bethany family during our 8 & 9:30 am Sunday morning worship services.

Our nursery team serves in groups of two on Sunday mornings, welcoming our infants and preschoolers to the nursery and engages the kids in age-appropriate play & stories, sharing Jesus, while the service is livestreamed for everyone in the nursery to worship.

The hours are 7:45-10:45 am, approximately two Sunday mornings a month. Candidates must be 18 years old and satisfactorily complete the employment processes. **Please contact Alissa Brege at abrege@bethanylutheran.org for more info or to apply.**

Giving Proportionately Luke 21:1-4

WE GIVE HIM BUT HIS OWN

At Bethany we know that “our stuff is not our stuff!” All that we have, all that we are, is a gift from Him. We also know that giving is a spirit-given compulsion. For Jesus Christ, in whose likeness we are being transformed daily, is the ultimate giver. Your gifts fund ministry that give people Jesus. His words, His promises, His presence, His gifts, His comfort, His strength are given through the gifts you are now giving Him. We thank and honor you for these gifts, because they thank and honor Him! **Questions?** Contact Maralee Shaeffer at mshaeffer@bethanylutheran.org.

THERE ARE MULTIPLE WAYS TO GIVE TO BETHANY INCLUDING:

Online, Text to Give, Online Bill-Pay, US Mail, Offering Box, **and now Apple Pay, Google Pay, Venmo, and PayPal!**



EARNING WHILE SHOPPING WITH RAISERIGHT

Summer is winding down but it's not too late to earn on all of your summer adventures when you buy gift cards, shop online through Bethany's RaiseRight program, and dine locally using a linked credit or debit card. The money you're already planning to spend on things like travel, gas, groceries, meals, clothing, and more can help you earn toward tuition or for Bethany ministries. Here's how to earn:

1. **Buy gift cards** from RaiseRight and use them to pay for your everyday expenses. Earn up to 20% back on every gift card purchase from RaiseRight.
2. **Shop online** through RaiseRight—log in to your RaiseRight account, click through to shop directly on a brand's website, and earn upon completing a purchase. Earn twice if you buy a gift card and use it as payment for your online purchase.
3. **Dine locally**—link a credit or debit card in the RaiseRight app and earn 5% every time you dine and pay with that linked card at thousands of restaurants nationwide.

(Tip! Add [RaiseRight's browser extension](#) to your browser so you can get earning reminders while shopping online!)

Haven't joined our RaiseRight program yet? Scan the QR code!



TO LEARN MORE:

Ruth Lopez
BLS Scrip Coordinator
rlopez@bethanylutheran.org
562-420-7783 ext. 58



HAVE YOU HEARD OF THE GRANTPARENT PROGRAM?

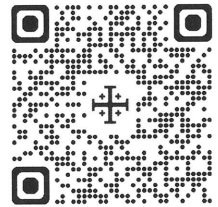
The Grantparent Program is a School Ministries mission project of the Pacific Southwest District of the Lutheran Church - Missouri Synod. The purpose of the Grantparent Program is to provide tuition assistance to students in urban communities so that they can receive an excellent Christian and academic education.

Many children living in urban communities need to hear the Good News of Jesus in a safe, nurturing environment, but they can't afford tuition to attend a Lutheran school.

That's where the Grantparent comes in!

Your tax deductible charitable donations enable children to attend a Lutheran school in an urban community and receive that excellent Christian and academic education! You can sponsor a student by making a donation of ANY amount!

For more information please contact anna.preus@psd-lcms.org.

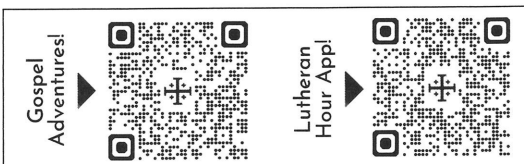


Community Connections: Acts 2:44

THE LUTHERAN HOUR *Updates!*

LOOKING FOR WAYS TO ENGAGE YOUR CHILD IN FAITH?

Check out the *Gospel Adventures Show!* This kid's audio program uses songs, storytelling, and activities to help kids encounter clear and compelling Gospel themes. Learn more by scanning the QR or wherever you listen to podcasts.



HAVE YOU DOWNLOADED THE LHM APP YET?

You can access Lutheran Hour Ministries' Daily Devotions and sermons from **The Lutheran Hour®** (TLH Sermons) on your mobile device by using the LHM app!

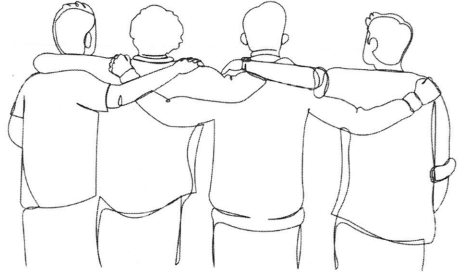
- Inspirational Scripture-based messages at your fingertips every day
- Advent and Lenten devotions
- Read the devotion/sermon text or listen to the audio, all in the app
- Project Connect booklets, Bible studies and much more

Community Connections: Acts 2:44

BETHANY LUTHERAN'S ANNUAL MEN'S RETREAT REGISTRATION IS NOW *open!*

A men's retreat is being planned for the weekend of October 3 - 5 at Luther Glen Retreat Center in Oak Glen. This is a wonderful facility that we have used before. The cost for this is \$275 which includes 2 nights and 5 meals. Bedding and towels are provided for our stay. Retreat starts with dinner on Friday and concludes with Worship on Sunday morning. Theme and program being planned. Should you only be able to join us for the day Saturday, cost is \$150 for the full day and 3 meals.

Last day to register is Sunday, September 21st at midnight.



QUESTIONS?

Contact Karl Fink -
kfink@bethanylutheran.org
562.421.4711. ext 19.

NEW GRIEF SHARE SERIES **STARTING IN SEPTEMBER**

DATES Sundays, starting September 14th

TIME 12:30 - 2:30 pm

PLACE Conference Room

LEADER Karl Fink

562-421-4711 ext. 19

kfink@bethanylutheran.org

If you are experiencing grief in any way, shape, or form, or if your grief has been buried for quite some time, please make an effort to attend this series. There's a nominal fee for the materials, which will be discussed at the first meeting. Griefshare is a 13 week video based series where we watch and discuss as people feel comfortable. If you have questions or concerns, contact Karl Fink at the phone number or email listed above.



**IMPORTANT
ANNOUNCEMENT**

**GAME DAY
WILL RESUME
SEPT. 2ND AT
11 AM IN THE
PARISH
LOUNGE.**

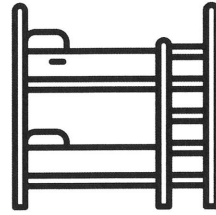
THE WOMEN'S THURSDAY MORNING BIBLE STUDY RESUMES IN SEPTEMBER!

The Women's Thursday Morning Bible Study will resume September 18 from 9:30 - 11 am in the Parish Lounge! We will be studying the attributes of God using the book, "The Knowledge of the Holy" by A.W. Tozer. You will learn and be inspired to think rightly about God. So, bring your Bible and "The Knowledge of the Holy," which can be ordered from Amazon or your favorite online store. Feel free to invite your friends who



want to learn more about our majestic God. Contact Meg Velez at (562) 426-4262 for more information.

See you there!



WHY HAVE ONE BED WHEN YOU COULD HAVE TWO?

Free bunk bed to a
Bethany family!

Interested?

Please contact Nola Seaman
at nola.seaman@yahoo.com
or **text only** to (562) 225-6620.

CONDO AND HOUSE *for rent!*



Looking for dependable, quiet renter for one-bedroom, one-bath condo unit in beautiful historical Carroll Park area, minutes from the beach. Great condition, well-kept surroundings, single-story, 846 square feet, new flooring and paint, bright and spacious, and ample storage. On-street parking. \$2000 per month. No pets please.



We also have a two-bedroom, one-bath house for rent at 1435 Ximeno for \$2900 per month. It's in a great neighborhood and close to shopping centers, laundromat, public transportation, and Cal State. There is driveway tandem parking. No pets please.

For more information: contact Debra Wasser at 562-619-1327.



DID YOU KNOW THAT YOU CAN HAVE THE BETHANY BROADCAST™ DELIVERED STRAIGHT TO YOUR INBOX?

The Chimes and Bullet now officially share one name: The Bethany Broadcast™. While you may continue to pick up a copy of the print edition as you leave worship each week, an expanded e-edition is also available! This weekly capsule includes worship highlights and big information that your brain may or may not have 'downloaded' from the prior Sunday. The purpose is to bolster you in faith, build you up in the key Biblical themes shared in worship, to bring to mind the important issues on Bethany's plate, and to broaden your awareness of opportunities of service to your Lord, your church, and community.

SCAN ME



UPCOMING YOUTH GROUP DATES!

SCAN THE QR CODE TO LEARN MORE ABOUT OUR YOUTH MINISTRIES AND TO SEE A FULL LIST OF UPCOMING EVENTS!



SCAN ME



QUESTIONS?

CHILDREN & FAMILY MINISTRIES:

Alissa Brege
562.421.4711 ext. 13
abrege@bethanylutheran.org

YOUTH MINISTRIES:

Kayleigh Lopez
562.421.4711 ext.18
klopez@bethanylutheran.org

DO YOU HAVE A PRAYER REQUEST OR DESIRE INFORMATION ABOUT A MINISTRY, MEMBERSHIP, OR ONLINE GIVING?



WOULD YOU LIKE TO HEAR TODAY'S OR A PREVIOUS SERMON AGAIN?

You can hear them as podcasts at bethanylutheran.org



WANT TO SEE IT AGAIN?

Today's 8 am service will be live-streamed on our YouTube channel:

