






# THE BETHANY BROADCAST

-  4644 Clark Ave.  
Long Beach, CA 90808
-  (562) 421-4711
-  bethanylutheran.org
-  Bethany.Long.Beach
-  @BethanyLutheran  
LongBeach

## JOIN US IN WELCOMING

*Pauline Svolos-Houck!*

Please join us in welcoming Pauline Svolos-Houck as Bethany's new Director of Finance and Operations. Pauline has an MBA in Finance and extensive experience as DOF at Westwood & Alta Colleges, St. Clair Law, and Intersource OEM. She is excited to serve the Lord, His people, and His Church by overseeing HR, Finance, and Facilities. After onboarding with Maraley Shaeffer, Pauline will fully assume her role as Maraley prepares for retirement.

Maraley will continue serving through January 2026 finish some specific projects for Bethany.

## PLEASE PRAY FOR:

- Jacob Bazz
- Nora Borg-Breen
- Kevin Dart
- David Gamble
- Betty Greene
- Lynda Kernohan
- Myrna Koenigsdorf
- Phyllis Lee
- Gary McDaniel
- Tony Mitchell
- Larry Neasel
- Christy Pierce
- Mike Pierce
- Suzanne Reed
- Joyce Rose
- Mike Schliebe
- Kat Totten
- Eno Uti

*Today We Celebrate the Holy Baptism of*



**EMERY SCHRADER**

*Daughter of Andrew and Amanda Schrader*

## PRAYER CHAIN *Updates*



**PRAYER REQUESTS SHOULD NOW BE SENT TO BOTH OF THE FOLLOWING ADDRESSES:**

**KFINK@BETHANYLUTHERAN.ORG AND**  
**KKRITZER@BETHANYLUTHERAN.ORG**

If you are already a recipient of Bethany's prayer request emails you'll now be receiving them from [noreply@simplechurchcrm.com](mailto:noreply@simplechurchcrm.com). If you would like to sign up, please send your request to Kasey Loya at [kloya@bethanylutheran.org](mailto:kloya@bethanylutheran.org). Please note that prayer requests will now only be sent out Monday - Friday 8 am - 4 pm.



---

# Worshiping Faithfully: Hebrews 10:25

---



## SUNDAY MORNING WORSHIP AND BIBLE STUDY SCHEDULE

---

### SERVICE SCHEDULE:

8 am • 9:30 am • 11 am

### COMMUNION SCHEDULE:

1st Sunday: all services

2nd Sunday: 9:30 am only

3rd Sunday: all services

4th Sunday: 9:30 am only

### WOMEN'S BIBLE STUDIES

**TIME** 10:45 am - 12 pm

**ROOMS** # 215 & Library

**LEAD BY** Mary Kay Esswein (215)  
Sheri Esswein (Library)

### MEN'S BIBLE STUDY

**TIME** 10:45 am - 12 pm

**ROOMS** Parish Lounge

**LEAD BY** Bob Lange & David Akins



## UNDER GRACE...

### BETHANY LUTHERAN CHURCH'S SUNDAY MORNING CHILDREN'S MINISTRY PROGRAM

---

Potty-trained 3 year olds through 2nd graders will start on **Sunday, September 14th** during 9:30 am worship. They will meet every Sunday except the last Sunday of the month. The kids will leave the worship area after the children's message with the kids' ministry team in the narthex (or lobby area in the back of the church) and should be picked up from the Parish Lounge (the glass double doors across the courtyard) at the conclusion of the service.

We are adding a new element for our 3rd, 4th, and 5th graders starting **Sunday, October 5th** during the 9:30 am service. On the 1st and 3rd Sundays of the month, they will also leave following the children's message with our kids' ministry team but will come back to Friendship Square to rejoin their families during fellowship, when worship concludes.

Parents, please fill out the yearlong permission form using the QR code in order for your child to come to any children's ministry program.



---

Questions? Contact Alissa Brege - Minister to Children & Families: 562-421-4711, ext. 13 or [abrege@bethanylutheran.org](mailto:abrege@bethanylutheran.org)

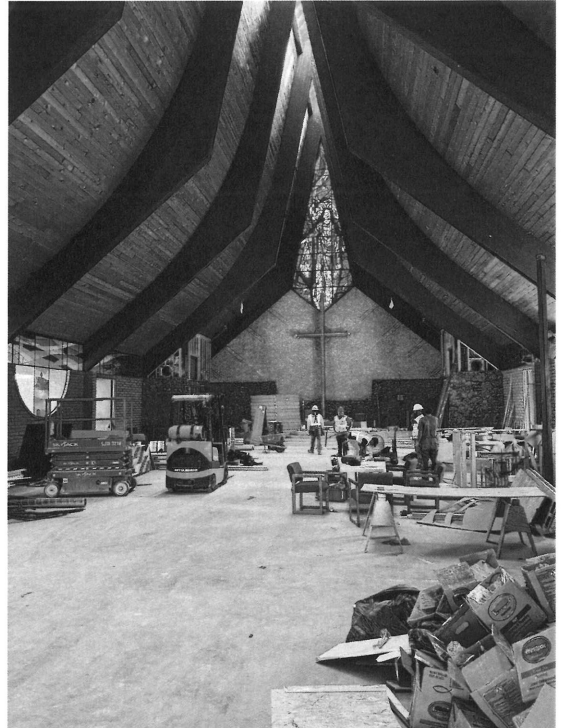
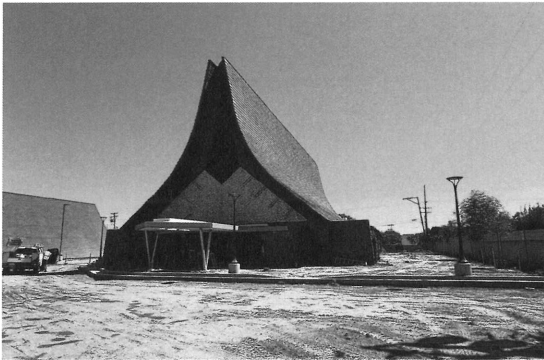
## BETHANY CYPRESS CAMPUS NEWS (HOLY CROSS)

In his journey through the Old Testament entitled Hitchhiking with the Prophets author Chad Bird reminds us that, “God wears no wristwatch and consults no calendar.” That in fact, “God is almost always late - often laughably and frustratingly, late.”

Yet, this God can be trusted to “make His promises come to pass, just not when we think they should...but according to His timetable.”

A commendable and enjoyable read, these few sentences are priceless for our understanding of God’s nature and our current situation during construction of our Cypress campus.

Construction has not been as speedy as many of us had hoped. Implementation of returning ministry and introduction of new ministries won’t begin immediately after the paint dries either. Yet, of this we can be certain, God will use our Cypress sanctuary, (In the same work Bird describes all sanctuaries as little Edens) to be a place where His promises are heralded, heard and harkened too; and a ministry that leads to a place where calendars and clocks hold no sway will be underway, at last, in His good time.



# Serving Passionately: Ephesians 2:10

*Introducing:*

## SERVANT LEADER TEAM: FACILITIES

### WHAT IS SLT: FACILITIES?

This team cares for the properties of the congregation as a sacred, legal, and equitable trust; takes all necessary actions to ensure that the properties are properly maintained, function as intended, and kept in good appearance at all times.



POSITIONS  
AVAILABLE +  
NO TERM  
LIMITS



VOLUNTEER  
BASED / NOT  
ELECTED

2-4

YEARLY TEAM  
MEETINGS

CHAIR &  
CO-CHAIR:

APPOINTED BY  
THE BOARD OF  
DIRECTORS



Gathered



Connected



Sent

### *option 1.* **ON-CALL VOLUNTEER**

#### RESPONSIBILITIES

Volunteers can opt to be "on-call" for all property care and maintenance issues such as:

- building repairs
- emergency maintenance
- safety inspections
- HVAC up-keep
- alarm testing
- landscaping
- leaks and other roofing issues
- classroom / office up-keep and repairs
- set-up / clean-up for events

### *option 2.* **SPECIFIC ROLE & SPECIAL EVENTS VOLUNTEER**

#### RESPONSIBILITIES

Volunteers can also opt for specific roles such as:

- landscaping
- irrigation
- cleaning
- electrical
- plumbing
- painting
- carpentry

Or special/annual events such as:

- decorating / un-decorating during holidays
- set-up / clean-up for Okto-bear-fest

### *interested?*

If you'd like to use your gifts and talents to join the SLT: Facilities team, please use the QR code or contact the church office for a form.



**Please note:** Most recent members of the Trustees or any group operating under their direction that are already serving do not need to fill out a form.



# CHRISTIAN OUTREACH *in Action!*

*Help COA Reach Their \$30,000 Goal through Long Beach Gives!*

At Christian Outreach in Action (COA), we are committed to providing essential support to our community members in need. Every day, we offer services such as hot meals, groceries, clothing, and more to ensure that individuals and families in Long Beach can meet their basic needs and thrive. But we can't do it alone—we need you to help us make a lasting impact.



**This year, we are excited to participate in Long Beach Gives, a 24-hour citywide giving event dedicated to raising funds for local nonprofits. Our goal is to raise \$30,000 so we can continue offering life-changing services to those who need it most. With your support, we can reach this goal and continue the work that helps so many in our community. If you would like to support COA with a donation, please use the QR code.**

*This year, Bethany will be collecting non-perishable food items on Reformation Sunday and at Okto-BEAR-fest for COA's Thanksgiving baskets!*

Planning to attend Okto-bear-fest or Trunk or Treat? Christian Outreach in Action is requesting the following items: Canned vegetables/yams, stuffing, instant mashed potatoes, gravy (packets), canned cranberry sauce, flour, cooking oil, tortillas, boxed baking items, sugar, energy/nutrition bars, pop-tarts, snack fruits, meat sticks/jerky, and wrapped cracker packets.



## A SEASONAL JOB

*with eternal purpose*

Work with Operation Christmas Child to process gift-filled shoeboxes for children around the world in Jesus' Name. Whether you're a people person or like working behind the scenes, we have a variety of seasonal employment openings — from assisting teams of volunteers to lifting cartons of shoeboxes or operating forklifts in our warehouse.



- Seasonal Employment (mid-November through mid-December) at the Operation Christmas Child facility in Fullerton, CA
- 40+ hours per week, Monday – Saturday (Thanksgiving Day off)
- Hourly pay rate of \$20 per hour for Customer Service and Warehouse Workers
- The joy of being part of a community of believers whose efforts are making a difference around the world



Updates

## FROM OUR LCMS MISSIONARIES

### NEWS FROM THE RICKMAN FAMILY SERVING IN LATIN AMERICA

Dear Brothers and Sisters in Christ,

*How great are his signs, how mighty his wonders! His kingdom is an everlasting kingdom, and his dominion endures from generation to generation. -Daniel 4:3*

Greetings in the name of our Lord Jesus Christ who remains faithful from generation to generation. This year for our missionary conference, we were blessed to have the opportunity to gather together with our colleagues serving throughout Latin America and the Caribbean (LAC) along with some of the former missionaries of LAC. Thanks to a wonderful display by Concordia Historical Institute and presentations by Dr. Rast and some current and former missionaries, we were able to learn more about the history of LCMS mission work in Latin America and celebrate 125 years of God's faithfulness as we reflected on the theme "Remember, Repent, Rejoice!" This past year, we were tasked with writing a history of the work in Panama, and Arthur had the opportunity to present it during the LAC leadership meetings prior to the conference. As current missionaries it is inspiring to hear stories of both the joys and challenges our predecessors faced and realize that we are not alone in our own joys and challenges as we continue to serve. Together, we can all rejoice in God's faithfulness "from generation to generation."

After the conference, we have been consumed with preparations for the new academic year. There is a new cohort of ladies beginning their studies to serve as deaconesses in ten countries throughout the region. While the trimester does not officially begin until next week, the last two weeks have been especially busy with orientations for the ladies and working on enrolling all the ladies in their classes using Canvas, an online platform, we are implementing for the first time with this new cycle of students. Arthur has been instrumental in launching this platform and the seminary is hoping to integrate its use into the other seminary programs as well. Additionally, last Saturday we began our first intensive class with the ladies here in Panama and will be finishing the remaining units of this course on Saturday Sept 20th. Please pray for all the deaconess and seminarians beginning a new academic year.

**Rickman Family Update:** One of the highlights of the conference was showing our children the campus of Concordia Seminary where we attended 20 years ago! History is one of their favorite subjects, so they enjoyed the presentations, hearing about the beginnings of LCMS mission work in Brazil and visiting Altenburg, MO, where some of the early German Lutherans settled in America. While, as missionaries, we still face some challenges with reliable mail and experience occasional outages with electricity, internet and water, it is nothing compared to the challenges experienced by those first missionaries in Brazil who had to ride days on horseback to reach their congregations!

*In Christ - Arthur and Eva, Bethany, Zoe, Noah, Nathaniel,  
Mary Anna, Addy, and Hannah*



# SUNDAY MORNING NURSERY CHILDCARE POSITION OPENING

**Do you love kids and love Jesus? We may have just the position for you!**

We are seeking a childcare provider to serve the youngest of our Bethany family during our 8 & 9:30 am Sunday morning worship services.

Our nursery team serves in groups of two on Sunday mornings, welcoming our infants and preschoolers to the nursery and engages the kids in age-appropriate play & stories, sharing Jesus, while the service is livestreamed for everyone in the nursery to worship.

The hours are 7:45-10:45 am, approximately two Sunday mornings a month. Candidates must be 18 years old and satisfactorily complete the employment processes. **Please contact Alissa Brege at [abrege@bethanylutheran.org](mailto:abrege@bethanylutheran.org) for more info or to apply.**



## YOUTH VOLUNTEER *Opportunities!*

### ACOLYTE AND CRUCIFER VOLUNTEER OPPORTUNITY!

We are once again interested in knowing which youth wish to acolyte for Sunday worship services (8 & 9:30 am)! Training is available to first-time acolytes. Please prayerfully consider this service opportunity and sign up on the google doc.

Questions? Please contact Karl Fink at [kfink@bethanylutheran.org](mailto:kfink@bethanylutheran.org).

To volunteer: [bit.ly/acolyte-and-crucifer](https://bit.ly/acolyte-and-crucifer)

### SUNDAY COFFEE & DONUT VOLUNTEERS NEEDED!

**OPEN TO YOUTH IN GRADES 8-12!**

This is a great way to interact with church members, hang out with other youth, and earn funds in your Youth Ministry Account to be used towards any Youth Ministry event.

Questions? Please contact Aimee Coleman at [acoleman@bethanylutheran.org](mailto:acoleman@bethanylutheran.org).

To volunteer: [bit.ly/coffee-and-donuts](https://bit.ly/coffee-and-donuts)

# Giving Proportionately Luke 21:1-4

## WE GIVE HIM BUT HIS OWN

At Bethany we know that “our stuff is not our stuff!” All that we have, all that we are, is a gift from Him. We also know that giving is a spirit-given compulsion. For Jesus Christ, in whose likeness we are being transformed daily, is the ultimate giver. Your gifts fund ministry that give people Jesus. His words, His promises, His presence, His gifts, His comfort, His strength are given through the gifts you are now giving Him. We thank and honor you for these gifts, because they thank and honor Him! **Questions? Contact Maraley Shaeffer at [mshaeffer@bethanylutheran.org](mailto:mshaeffer@bethanylutheran.org).**

### THERE ARE MULTIPLE WAYS TO GIVE TO BETHANY INCLUDING:

Online, Text to Give, Online Bill-Pay, US Mail, Offering Box, **and now Apple Pay, Google Pay, Venmo, and PayPal!**



## READY TO UP YOUR EARNING POTENTIAL?

**RaiseRight has four ways (in addition to gift cards) to help you earn more!**

1. **Shop Online** - Select the 'Shop Online' tab on the website or app; choose from over 450 brands; select 'Shop Now' on the brands detail page to visit their website and go shopping; complete a purchase on the brand's website to earn a rebate. For many brands you can also use a gift card from RaiseRight to earn even more on your purchase.
2. **RaiseRight Earnings Extension** - By adding the extension to your browser, you will be provided with real-time earning reminders while shopping online. The extension icon will glow with color when earnings are available for the brand - it will let you know if RR gift cards or the new shop online feature is available.
3. **Local Dining** - Dine and earn at your favorite local restaurant. Link a credit or debit card in your RaiseRight account; search for participating local restaurants in the app; dine and earn 5% when you pay with your linked card - includes tax and tip!
4. **Book Travel** - Save and earn by booking hotels and car rentals directly through RaiseRight! Visit the new 'Earn More' tab; select 'Book Today'; earn BIG on every booking. Use your credit or debit card - enjoy low prices and high earnings.



### TO LEARN MORE:

Ruth Lopez  
BLS Scrip Coordinator  
[rlopez@bethanylutheran.org](mailto:rlopez@bethanylutheran.org)  
562-420-7783 ext. 58





# Community Connections: Acts 2:44

## 2026 TOURNAMENT OF ROSES PARADE FLOAT

Building off the 2026 Tournament of Roses theme, *The Magic in Teamwork*, the Lutheran Hour Ministries Float Committee proudly presents its *Bringing Christ to the Nations* float. The float features a "Team Jesus" blimp flying over the world. Coming forth from the church, Jesus celebrates with 12 modern-day disciples, as it features the message ALL WELCOME. Riding on the float this year is a small representation of vocations Christ has called us for the building of His Church and furtherance of the Gospel message: a teacher, a missionary, a pastor, etc. Want to secure your spot to be a Petal Pusher? **Use the QR code to volunteer today!**



## Mom Co.

**Date:** second Tuesdays  
**Time:** 12:30 pm  
**Location:** LBX

A time for moms to connect with one another, have a time of devotion, learn & grow, build one another up & enjoy lunch together!

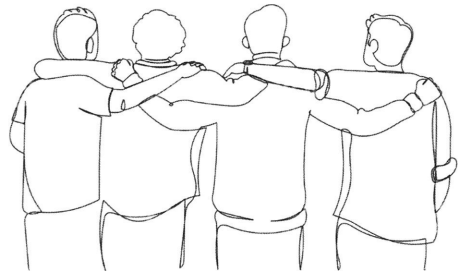
Questions? Contact Alissa Brege at [abrege@bethanylutheran.org](mailto:abrege@bethanylutheran.org).



## HAVE YOU REGISTERED FOR THE MEN'S RETREAT?

A men's retreat is being planned for the weekend of October 3 - 5 at Luther Glen Retreat Center in Oak Glen. This is a wonderful facility that we have used before. The cost for this is \$275 which includes 2 nights and 5 meals. Bedding and towels are provided for our stay. Retreat starts with dinner on Friday and concludes with Worship on Sunday morning. *This year's theme is: If you want to walk on water, you've got to get out of the boat.* Should you only be able to join us for the day Saturday, cost is \$150 for the full day and 3 meals.

**Last day to register is Wednesday, September 24th at midnight.**



### QUESTIONS?

Contact Karl Fink - [kfink@bethanylutheran.org](mailto:kfink@bethanylutheran.org)  
 562.421.4711. ext 19.



JOIN US  
**OCTOBER 26TH**  
AT BETHANY LUTHERAN

MUSIC PERFORMANCE BY: LADYHOSEN

**BEER**

**MUSIC**

**FOOD**

**FAMILY FUN**

# ORDER OF EVENTS

**TRUNK  
OR TREAT**

**4 - 5 PM**

JOIN US IN THE PARKING LOT FOR OUR ANNUAL TRUNK OR TREAT! ADMISSION IS 1 BAG OF CANDY + 1 CANNED FOOD ITEM.

**FOOD IS  
SERVED**

**4:30 - 6:30 PM**

MEET US ON THE FIELD FOR A TRADITIONAL GERMAN FEAST WITH ALL THE TRIMMINGS. USE THE QR CODE TO ORDER FOOD & DRINKS!

**OKTO-  
FEST**



**4 - 7 PM**

THE FUN CONTINUES UNDER THE TENT WITH OKTO-BEAR-FEST: LIVE MUSIC, GOOD FOOD, AND PLENTY OF FUN & FELLOWSHIP FOR THE ENTIRE FAMILY!

**SCAN TO REGISTER  
AND ORDER FOOD +  
DRINKS BY OCT. 21**



# SOCAL CONNECTS: *a SoCal LLL District mission gathering*

Join the So California LLL District mission gathering to learn how to *CONNECT* with people to share Jesus. Highlights include: guest speaker Rev. Dr. Chad Lakies, blitz ministry sessions, mission speed dating, mission projects, meet mission-minded people, and be encouraged by our collective service in SoCal.



**WHEN** Saturday, October 11, 2025

**CHECK IN** 8:30 AM | **START** 9:00 AM | **COMMISSIONING** 1:50 PM

**WHERE** St. Paul's Lutheran Church, Orange, CA

**Cost:** Free! (Donations accepted for lunch, float decorating, and LHM)

**USE THE QR CODE TO REGISTER TODAY!**

## HAVE YOU HEARD OF THE GRANTPARENT PROGRAM?

The Grantparent Program is a School Ministries mission project of the Pacific Southwest District of the Lutheran Church - Missouri Synod. The purpose of the Grantparent Program is to provide tuition assistance to students in urban communities so that they can receive an excellent Christian and academic education.

Many children living in urban communities need to hear the Good News of Jesus in a safe, nurturing environment, but they can't afford tuition to attend a Lutheran school.

### ***That's where the Grantparent comes in!***

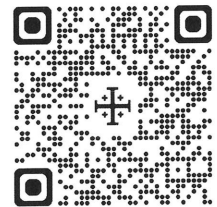
Your tax deductible charitable donations enable children to attend a Lutheran school in an urban community and receive that excellent Christian and academic education! You can sponsor a student by making a donation of ANY amount! In the 23 years of the Grantparent Mission Project, 1,125 students have been recipients of tuition assistance in urban LCMS school in the Pacific Southwest District.

### ***Words from those who have benefited from the Grantparent Mission Project of LCMS-Pacific Southwest District***

"Going to this (Lutheran) high school has given me the Christian environment along with a great education. In the last couple of months, my family has struggled to pay for school. Knowing that people care about my education is something I could never thank you enough for. You have been a true blessing of God that will stay with me forever." -High school Grantparent student

"You have shown me how God is faithful and provides for me and my daughter. Thank you for helping me obtain a Christian education for her. I honestly could not have done this without your help." -Parent of a Grantparent student

For more information please contact [anna.preus@psdlcms.org](mailto:anna.preus@psdlcms.org)





## DID YOU KNOW THAT YOU CAN HAVE THE BETHANY BROADCAST™ DELIVERED STRAIGHT TO YOUR INBOX?

The Chimes and Bullet now officially share one name: The Bethany Broadcast™. While you may continue to pick up a copy of the print edition as you leave worship each week, an expanded e-edition is also available! This weekly capsule includes worship highlights and big information that your brain may or may not have 'downloaded' from the prior Sunday. The purpose is to bolster you in faith, build you up in the key Biblical themes shared in worship, to bring to mind the important issues on Bethany's plate, and to broaden your awareness of opportunities of service to your Lord, your church, and community.



# UPCOMING YOUTH GROUP DATES!

SCAN THE QR CODE TO LEARN MORE ABOUT OUR YOUTH MINISTRIES AND TO SEE A FULL LIST OF UPCOMING EVENTS!



## QUESTIONS?

### CHILDREN & FAMILY MINISTRIES:

Alissa Brege  
562.421.4711 ext. 13  
abrege@bethanylutheran.org

### YOUTH MINISTRIES:

Kayleigh Lopez  
562.421.4711 ext.18  
klopez@bethanylutheran.org

DO YOU HAVE A PRAYER REQUEST OR DESIRE INFORMATION ABOUT A MINISTRY, MEMBERSHIP, OR ONLINE GIVING?



WOULD YOU LIKE TO HEAR TODAY'S OR A PREVIOUS SERMON AGAIN?

You can hear them as podcasts at [bethanylutheran.org](http://bethanylutheran.org)



WANT TO SEE IT AGAIN?

Today's 8 am service will be live-streamed on our YouTube channel:

