






THE WEEKLY
CHIMES
BETHANY LUTHERAN CHURCH

-  4644 Clark Ave.
Long Beach, CA 90808
-  (562) 421-4711
-  bethanylutheran.org
-  [Bethany.Long.Beach](https://www.facebook.com/Bethany.Long.Beach)
-  [@BethanyLutheranLongBeach](https://www.youtube.com/@BethanyLutheranLongBeach)

Yesterday We Celebrated the Holy Baptism of :



Mark Nicholas Vilter

Son of Nicholas and Caroline (née Holmquist) Vilter
Sponsors: John Holmquist and Jesse Allen



Happy Anniversary to Jim & Jan Coontz!

Congratulations to Jim and Jan Coontz who will be celebrating 59 years of marriage on February 5th! May God bless your marriage today and always.

BETHANY LUTHERAN IN CYPRESS,
Holy Cross Campus



The new members of Bethany, who have called Holy Cross their church home for years or even decades, will be worshipping, studying, fellowshiping and serving with us on our main campus during construction. **Welcome them!**

Delta Construction and Keltner Architecture Firm are our partners in construction. The historic pinnacle roof reaching to the heavens, the matching crosses in the chancel and exterior and the beautiful stained glass windows shall remain, the rest of the building is being updated and altered to house our entire ministry on our Cypress site (Holy Cross Campus) "under one roof." Though there will be a wonderful wrap around patio for gathering and connecting under blue skies and stars too.

Escrow is set to close in early February and construction "in full" is set to begin shortly thereafter. Some initial construction items: system designs, interior item removal and demo and the like is already underway.

PLEASE PRAY FOR:

- Michelle Bialorke
- Patt Demetri
- David Gamble
- Betty Greene
- Walter Greene
- Cristina LaSalvia
- Phyllis Lee
- Tom Mooney
- Larry Neasel
- Marsha Newell
- Suzanne Reed
- Marilyn Riordan
- Shirley Sisson
- Kat Totten
- Martin & Nancy Wastell
- Joyce Yocam



Worshiping Faithfully: Hebrews 10:25



IMPORTANT SUNDAY WORSHIP AND BIBLE STUDY SCHEDULE UPDATES!

Starting **today** Sunday, February 2nd, our multi-site congregation will temporarily be a singular site for our Sunday schedule. While Bethany's Holy Cross campus is undergoing transformation for future mission and ministry, our Sunday morning schedule will be completely on the main campus of Bethany.

SERVICE SCHEDULE:

8 am
9:30 am
11 am - **NEW!**

COMMUNION SCHEDULE:

1st Sunday: all services
2nd Sunday: 9:30 am only
3rd Sunday: all services
4th Sunday: 9:30 am only

BIBLE STUDY SCHEDULE:

"Lessons of the Day" will be led by a member of the ministry staff at 9:30AM in the Multi-Purpose Room (# 215) located at the top of the south side staircase in Freedom Square (school courtyard).

Women's and Men's studies will be led by congregational members at 10:45AM. Location varies.

Please contact the church office for more info.

NEW LIVESTREAM TIME:

Beginning February 2nd, we will begin livestreaming our 8:00AM service instead of our 9:30AM service. To watch live, please tune in at 8:00AM. As always, you may watch a recording of the Sunday service at any time on our YouTube channel.

MIDWEEK LENTEN GATHERINGS

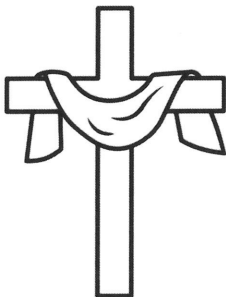
The Prophet & the palate. In both prophetic utterance and descriptive reflection The Prophet, Isaiah, employs meal metaphors when speaking of the rebellion of the Lord's people and the redemption and deliverance He has worked on their (our) behalf. So that we might again taste and see the goodness of the Lord, this Lent we will gather together, connect over a meal and conversation, and hear the Word of the Lord through the mouth of Isaiah: The Prophet & the palate.

The gym will open at 6pm on Wednesday evenings in Lent. We'll share a light meal, connect with our brothers and sister and then reflect upon a text of Isaiah, sing, pray, discuss and be heading home by 7:30pm.

If your small group or rooted group, buddies from Bible study or bunco, your service or ministry team, the group you sing or scout with, the group with which you toss darts or hit balls (golf or pickle)....you get the picture...would like to host one Lenten gathering let RevKev and our office administrator Kasey know. (RevKev: kkritzer@bethanylutheran.org / Kasey: kloya@bethanylutheran.org)

Hosting an evening includes picking up the entree, sides and drinks (we have a fund that is covering costs), setting up tables, chairs, table clothes, and food station and then participating in clean up. In good ole Bethany Lutheran fashion we'll count on those attending to help put up tables and chairs for a quick clean up.

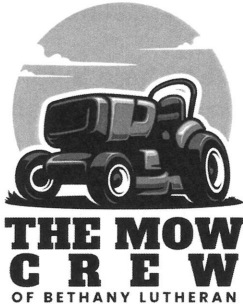
THE LENTEN SCHEDULE FOR "THE PROPHET & THE PALATE" IS:



- 3/12** Isaiah 5:1-7
"Good Grapes Planted...bad fruit yielded"
- 3/19** Isaiah 42:10-21
"The False Fast vs Factual Fasting"
- 3/26** Isaiah 25:1-7
"THE Death Eater"
- 4/2** Isaiah 55:1-7
"The Menu: wine, milk and bread"
- 4/9** Isaiah 12:1-6
"Belly Up to the Well of Salvation"

Serving Passionately Ephesians 2:10

HAVE YOU ALWAYS WANTED TO RUN A RIDING MOWER ?



We have a spot for you! We are looking for a few people to help out on the mow crew. The crew is responsible for mowing the back field and a couple hours a week is all it takes!

CONTACT PHILIP LOPEZ AT (562) 416-5960 TO FIND OUT MORE AND JOIN THE TEAM!

THE TECH TEAM NEEDS YOU!

We have been live streaming our worship services for a while now. It has been a blessing to our online community and to those who are not able to attend worship in person. **To keep this ministry going we are in need of volunteers who can help run the tech for the services.** Positions Include: Camera operator, in-house sound, live stream sound, and slide operator! No experience necessary and a training day will be scheduled.

Interested or know someone who might be? Contact Blake Flattley at bflattley@bethanylutheran.org.

Giving Proportionately Luke 21:1-4

YOUR 2024 GIVING STATEMENTS!

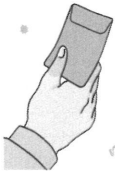
2024 Giving Statements were emailed on Friday, January 31st. If we do not have an email address for you, your statement will be mailed by the end of next week. Your generosity makes a significant impact on our ministry, and we are deeply grateful for your faithful support.

Please contact Maraley Shaeffer at mshaeffer@bethanylutheran.org with any questions or updates.

Giving Proportionately: Luke 21:1-4

WE GIVE HIM BUT HIS OWN

At Bethany we know that “our stuff is not our stuff!” All that we have, all that we are, is a gift from Him. We also know that giving is a spirit-given compulsion. For Jesus Christ, in whose likeness we are being transformed daily, is the ultimate giver. Your gifts fund ministry that give people Jesus. His words, His promises, His presence, His gifts, His comfort, His strength are given through the gifts you are now giving Him. We thank and honor you for these gifts, because they thank and honor Him! Questions? Contact Maraley Shaeffer at mshaeffer@bethanylutheran.org.



There are multiple ways to give to Bethany Lutheran Church including:

Giving Online, Text to Give, Online Bill-Pay, US Mail, Offering Box



NEED A GIFT CARD WE DON'T HAVE ON HAND?



It may help you to know when I am ordering. The ordering schedule for February: February 3 (order arrives Feb. 5 / last chance to order something special for Valentine's Day!), Feb. 18 (order arrives Feb. 20). Typically I order every other Monday. This month has a change due to the holiday. Monday orders come in on Wednesday.

PRODUCT UPDATES:

New Brand: Oura Ring - Shop the first-of-its-kind smart ring to unlock personalized health and wellness insights. Available in eGift cards from \$25 - \$1000 amounts with 10% earnings.

Update: IKEA - Now available in \$25, \$100 and \$250 physical cards with 5% earnings, in addition to the current offering of \$25 and \$100 eGift cards.



To learn more:

Ruth Lopez
BLS Scrip Coordinator
rlopez@bethanylutheran.org
562-420-7783 ext. 58



Community Connections: Acts 2:44

IT'S TIME FOR THE ANNUAL CAMPOUT RETREAT!



WHEN: February 14-17

WHERE: Mobiland RV Park, Ocotillo Wells

Bring your special dish for Saturday's pot luck supper, and Sunday evening hors d'oeuvres along with some firewood for the campfire. We will have a few optional outings throughout the week-end. A worship service will be held Sunday. For details or reservations, please call or text Philip Lopez at (562) 416-5960.

NEW GRIEFSHARE SERIES GOING ON NOW!

WHEN: Sundays at 12:30 pm

WHERE: Conference Room (off of the church parking lot)

LEADER: Karl Fink
(562) 421-4711 ext. 19
kfink@bethanylutheran.org



If you are experiencing grief in any way, shape, or form, or if your grief has been buried for quite some time, please make an effort to attend this

series. There's a nominal fee for the materials, which will be discussed at the first meeting. Griefshare is a 13 week video based series where we watch and discuss as people feel comfortable.

SAVE THE DATE FOR BETHANY LUTHERAN VACATION BIBLE SCHOOL!

JUNE 23-27, 2025

BETHANY'S CAMPUS

FREE FOR ALL PARTICIPANTS

THEME: TRUE NORTH!

This year, we're taking kids on the ultimate Alaskan adventure where northern lights glow over majestic mountains, racing rivers, and glistening glaciers. In a world where it's easy to lose sight of what's true, True North VBS will guide your kids to the one thing that never changes — Jesus, a faithful friend we can always trust. Get ready for a week of faith, fun, and unforgettable experiences! Stay tuned for more details in the coming months.



Blessings,
Kayleigh Lopez
Youth Minister /
VBS Director
309-397-6583

Bethany Lutheran Church presents
**THE BRIANNA ESSWEIN
MEMORIAL GOLF TOURNAMENT**
FRIDAY, MARCH 28, 2025

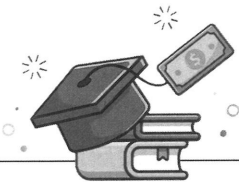


- **PRICE:** \$150 per golfer
- **WHERE:** Navy Golf Course at
5660 Orangetown Ave, Cypress, CA 90630
- **CHECK-IN BEGINS:** 6:30AM
- **EARLIER TIME: IN CARTS BY 7:45 AM!**
- **TEE TIME:** 8:00AM
- **BUFFET LUNCH:** 1:00PM
- **QUESTIONS:** Karl Fink - kfink@bethanylutheran.org

YOUR 2025 GOLF COMMITTEE:
**MARTY CALLOW, BOB NEWELL,
PHIL LOPEZ, CRAIG DEAN,
TED SPASEFF & MARTY PLATT**



***EARLY REGISTRATION ENDS @ MIDNIGHT ON
MONDAY, FEBRUARY 24, 2025.***
***AFTER FEB. 24TH THE PRICE IS \$175 PER GOLFER
(UNTIL SOLD OUT)***



BEUTEL SCHOLARSHIP GRANT APPLICATIONS HAVE ARRIVED!

Beutel Scholarship Grant Applications are now being accepted for academic year 2025-2026 and are available in the Church Office. These applications are for students attending a college or university of our Lutheran Church Missouri Synod in preparation for a full-time career as a pastor, teacher, deaconess, youth director, social worker, lay missionary worker, medical missionary, or parish worker. The purpose of the grant is to encourage our young people to pursue a career in church work and to give them assistance in reaching this goal. All scholarships are awarded on an annual basis. If a student needs scholarship help for the school term beginning in the fall of 2025, they must apply between January 15 and March 15 of this year. Application's are available in the Church Office for completion in a folder marked **BEUTEL SCHOLARSHIPS**.

IN ORDER FOR STUDENTS TO BE ELIGIBLE, THEY MUST RETURN APPLICATIONS TO THE CHURCH OFFICE (SPIRITUAL LIFE BOX) ON OR BEFORE SATURDAY, MARCH 15.

IF YOU HAVE ANY QUESTIONS, PLEASE CONTACT JIM SWICK AT (562) 714-3196.



LUTHERAN HOUR MINISTRIES SUNDAY 2025

CONNECTED

in Christ



[LHM.ORG/DISCOVERLHM](https://lhm.org/discoverlhm)

Connect with us!



WELCOME TO THE FAMILY!

Lutheran Hour Ministries (LHM) is a trusted resource in global media that equips and engages a vibrant volunteer base to passionately proclaim the Gospel with people around the world. We partner with churches and individuals like you to carry the Good News of Jesus into more than 60 countries, including places where foreign ministries cannot enter. Here at home, you can find our flagship broadcast, The Lutheran Hour, on radio stations nationwide, SiriusXM's Family Talk channel, or your favorite streaming provider.

We invite you to connect with us today and become part of something bigger...

Together. One family. Connected in Christ.



BETHANY LUTHERAN CHURCH PRESENTS:
**“ESTABLISH THE
WORK OF OUR HANDS”**
A WOMEN’S RETREAT
with special retreat leader
DR. CAROL McDANIEL

Friday, June 6 - Saturday, June 7
at Concordia University in Irvine

*Event begins with dinner on Friday
and ends after dinner on Saturday!*

**LESS THAN
20 SPOTS LEFT!
SEND YOUR
DEPOSIT SOON!**

**RETREAT COST
IS \$180**

**SAVE YOUR SPOT
WITH \$20 DEPOSIT!**

Use this QR
code to
Save your Spot
or
Fully Register



SAVE THE DATE!

**TAKE ME OUT TO
THE ANGELS GAME!**
WITH BETHANY LUTHERAN

**SUNDAY, MAY 4TH
1:07 PM GAME TIME
AT ANGEL STADIUM**

**COST: \$20 PER TICKET
TICKETS ARE LIMITED**

QUESTIONS? CONTACT ALISSA BREGE AT ABREGE@BETHANYLUTHERAN.ORG

SAVE THE DATE

YOUTH GATHERING

Live and Silent Auction



Mark your calendars for a night of fun, food, and festivities at the **LCMS Youth Gathering Auction** on **Saturday, April 5, 2025!**

WHERE: POA Park (behind Long Beach Town Center)

TIME: Check-in starts at 4:00 PM | Auction runs from 5:00–8:00 PM

This year's theme is **Mardi Gras**, celebrating our youth's journey to New Orleans this July! Enjoy the smooth tunes of **The Beach Dixieland Ramblers**, indulge in fresh **made-to-order beignets** and **Southern Creole cooking**, and join us in raising funds for an unforgettable spiritual formation experience for our youth.

TICKETS:

\$20 for adults

\$10 for kids (10 and under)

Tickets go on sale March 2 and close March 23, 2025.

DON'T MISS THIS EVENING OF JOY, COMMUNITY, AND PURPOSE!



JOIN US FOR COOK'S NIGHT OUT AT WAHOO'S!

Support our 8th graders going to Washington DC and get a night off from cooking on **Wednesday, February 26th.**

Come out to Wahoo's (4201 McGowen St. #205, Long Beach, CA 90808). Wahoo's will donate 20% of your entire purchase to help support Bethany Lutheran Church & School. Please bring or show flyer at the register. Flyers are available for pickup in the school office or follow the link provided in the Bethany Bullet. (Not receiving the Bullet yet? Scan the QR code to sign up!)



Valid for dine in and take out orders from 11:00AM to 8:00PM.



WINTER WARMTH DRIVE

Benefitting COA Homeless Assistance
Christian Outreach in Action, Long Beach

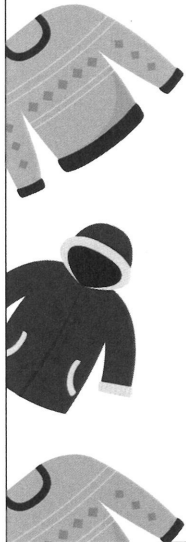
Help those in need with new or used blankets and jackets.



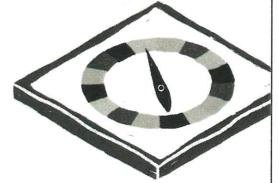
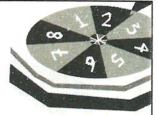
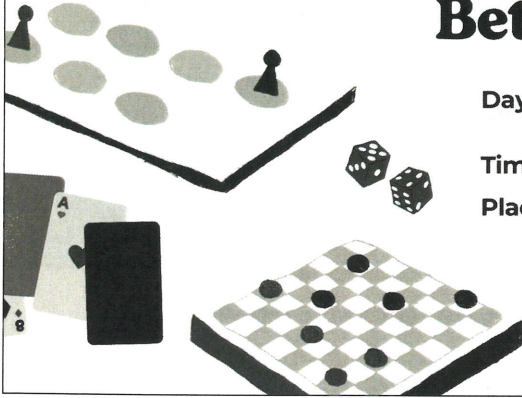
NEW Donation Deadline:
Friday, February 7, 2025



Drop-Off Locations:
School Office
Preschool Hallway



Join us for Game Day at Bethany Lutheran!



Day: First Tuesday of the month beginning February 4th

Time: 11:30 am - 1 pm

Place: Parish Lounge

Refreshments: snacks and drinks

Sponsored by: Joy, Marilyn, and Cheryl

Games donated by: The Kramers

ESTATE PLANNING WITH THE LCMS FOUNDATION

Putting an estate plan together presents many competing priorities around which to make decisions. Certainly, you wish to care for the family you love. Yet even families can present competing priorities. Maybe you are reaching the later part of earthly life and have no children. Is family inheritance still required, or expected? Might God have another plan for His resources in your life? Your LCMS Foundation Gift Planning Counselor can help you to begin discerning the right thing to do. Contact **Andrea Hyde - Gift Planning Specialist at andrea.hyde@lfn.org or 209-613-2125.**



Date: second Tuesdays of the month
Time: 8:30 - 9:30 am
Location: Youth Center

A time for moms to connect with one another, have a time of devotion, learn & grown, build one another up & snack on breakfast treats together.

Mom Co. questions!

Contact Alissa Brege at abrege@bethanylutheran.org.

DO YOU HAVE A PRAYER REQUEST OR DESIRE INFORMATION ABOUT A MINISTRY, MEMBERSHIP, OR ONLINE GIVING?



WOULD YOU LIKE TO HEAR TODAY'S OR A PREVIOUS SERMON AGAIN?

You can hear them as podcasts at bethanylutheran.org



WANT TO SEE IT AGAIN?

Today's 9:30 am service will be live-streamed on our YouTube channel:

