






THE WEEKLY
CHIMES
BETHANY LUTHERAN CHURCH

-  4644 Clark Ave.
Long Beach, CA 90808
-  (562) 421-4711
-  bethanylutheran.org
-  Bethany.Long.Beach
-  @BethanyLutheran
LongBeach

God's Comfort and Peace to:



the family and friends of Shirley Sisson who went home to her heavenly father on February 12, 2025.

May the love of God surround you, offering comfort and peace in the midst of sorrow.

**JOIN US TODAY FOR A
SPECIAL CONCERT EVENT!**

Bethany Lutheran welcomes the Concordia choir as they present their debut concert of the spring season. The choir, under the direction of Dr. Michael Busch, will be performing at 4:00 pm in our sanctuary. No tickets are required to attend this concert. A free-will offering will be collected by the choir.



CONCORDIA
UNIVERSITY
IRVINE

For more information,
please visit cui.edu/gomusic.

PLEASE PRAY FOR:

- Pastor Kyle Blake
- Lenore Chunko
- Pat Demetri
- Betty Greene
- John Lightle
- Phyllis Lee
- Vanessa Lee
- Marge Lorenz
- Tom Mooney
- Larry Neasel
- Suzanne Reed
- Kat Totten

IT'S GIRL SCOUT COOKIE TIME!



Get your Girl Scout Cookies between services now through March 9. There are 9 fantastic flavors to choose from! Thank you for supporting your Bethany Lutheran Girl Scout Troops in 1st, 3rd, 5th, 8th, 9th, and 11th grades!





IMPORTANT SUNDAY WORSHIP AND BIBLE STUDY SCHEDULE *Updates!*

Our multi-site congregation will temporarily be a singular site for our Sunday schedule. While Bethany's Holy Cross campus is undergoing transformation for future mission and ministry, our Sunday morning schedule will be completely on the main campus of Bethany.

SERVICE SCHEDULE:

8 am
9:30 am

COMMUNION SCHEDULE:

1st Sunday: all services
2nd Sunday: 9:30 am only
3rd Sunday: all services
4th Sunday: 9:30 am only

BIBLE STUDY SCHEDULE:

"Lessons of the Day" will be led by a member of the ministry staff at 9:30AM in the Multi-Purpose Room (# 215) located at the top of the south side staircase in Freedom Square.

Women's and Men's studies will be led by congregational members at 10:45AM. Location varies.

Please contact the church office for more info.

NEW LIVESTREAM TIME:

Beginning February 2nd, we will begin livestreaming our 8:00AM service instead of our 9:30AM service. To watch live, please tune in at 8:00AM. As always, you may watch a recording of the Sunday service at any time on our YouTube channel.



Ash Wednesday Worship Services **March 5, 2025**

"Savior, when in dust to Thee low we bow the adoring knee; When, repentant, to the skies scarce we lift our weeping eyes; O, by all Thy pains and woe suffered once for us below, Bending from Thy throne on high, Hear our penitential cry!"

With these words the hymnists bids us begin our Lenten pilgrimage to the Cross of Christ, our Savior and Lord. The journey begins annually on Ash Wednesday. **We will have two Ash Wednesday worship services this year: 1 pm and 6:30 pm. Our 9 am day school chapel service will also include the imposition of ashes. From 10 am – 11 am the sanctuary will be open for meditation, reflection, prayer, and private imposition of ashes.**

MIDWEEK LENTEN GATHERINGS

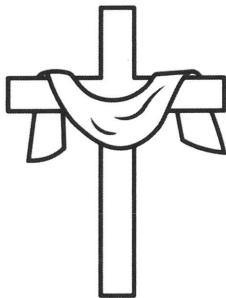
The Prophet & the palate. In both prophetic utterance and descriptive reflection The Prophet, Isaiah, employs meal metaphors when speaking of the rebellion of the Lord's people and the redemption and deliverance He has worked on their (our) behalf. So that we might again taste and see the goodness of the Lord, this Lent we will gather together, connect over a meal and conversation, and hear the Word of the Lord through the mouth of Isaiah: The Prophet & the palate.

The gym will open at 6pm on Wednesday evenings in Lent. We'll share a light meal, connect with our brothers and sister and then reflect upon a text of Isaiah, sing, pray, discuss and be heading home by 7:30pm.

If your small group or rooted group, buddies from Bible study or bunco, your service or ministry team, the group you sing or scout with, the group with which you toss darts or hit balls (golf or pickle).....you get the picture...would like to host one Lenten gathering let RevKev and our office administrator Kasey know. (RevKev: kkritzer@bethanylutheran.org / Kasey: kloya@bethanylutheran.org)

Hosting an evening includes picking up the entree, sides and drinks (we have a fund that is covering costs), setting up tables, chairs, table clothes, and food station and then participating in clean up. In good ole Bethany Lutheran fashion we'll count on those attending to help put up tables and chairs for a quick clean up.

THE LENTEN SCHEDULE FOR "THE PROPHET & THE PALATE" IS:



- 3/12** Isaiah 5:1-7
"Good Grapes Planted...bad fruit yielded"
- 3/19** Isaiah 42:10-21
"The False Fast vs Factual Fasting"
- 3/26** Isaiah 25:1-7
"THE Death Eater"
- 4/2** Isaiah 55:1-7
"The Menu: wine, milk and bread"
- 4/9** Isaiah 12:1-6
"Belly Up to the Well of Salvation"

BETHANY LUTHERAN IN CYPRESS,

Holy Cross Campus



The new members of Bethany, who have called Holy Cross their church home for years or even decades, will be worshipping, studying, fellowshiping and serving with us on our main campus during construction. **Welcome them!**

Delta Construction and Keltner Architecture Firm are our partners in construction. The historic pinnacle roof reaching to the heavens, the matching crosses in the chancel and exterior and the beautiful stained glass windows shall remain, the rest of the building is being updated and altered to house our entire ministry on our Cypress site (Holy Cross Campus) "under one roof." Though there will be a wonderful wrap around patio for gathering and connecting under blue skies and stars too.

Escrow is set to close in early February and construction "in full" is set to begin shortly thereafter. Some initial construction items: system designs, interior item removal and demo and the like is already underway.



SUNDAY MORNING NURSERY CARE:

We love kids here at Bethany! **We offer nursery care during both our 8:00 and 9:30AM services.** Infants through pre-school kids love connecting with friends & enjoy playing with the toys while listening to the service playing. We have a fantastic team that are highly qualified caretakers.

Drop off starts at 7:50AM for the 8:00AM service and at 9:20AM for the 9:30AM service. Please make your way across Friendship Square (the courtyard outside) to sign your little one in.



UNDER GRACE, UNDER 8:

Children ages two (and who are potty-trained) through second grade are invited to join us for songs, crafts, stories that help them to better understand Jesus abundant love for them and the grand adventures of the Bible!

Under Grace, Under 8 normally happens during our 9:30AM worship service. Kids will be invited from Children's Message to join in the fun and parents can pick up their kids just following the service at the Parish Lounge.

If you haven't filled out a Yearlong Permission Form this year yet, please use the QR code here. Questions? Contact Alissa Brege - Minister to Children & Families: 562-421-4711, ext. 13 or abrege@bethanylutheran.org



Serving Passionately: Ephesians 2:10

NEW VOLUNTEER OPPORTUNITY: *Offering Counter!*



Do you have computer skills? Basic accounting knowledge? Good organizational habits? If this sounds like you, then you'd be a perfect fit! Bethany Lutheran is looking for a few volunteers to come in once a month to count the Sunday donations and input them into our database. Currently, the counting is done Tuesday mornings at 9 am but the day and time is flexible.

If you are interested in volunteering or simply learning more about this volunteer opportunity, please contact Maraley Shaeffer at mshaeffer@bethanylutheran.org.

YOUTH VOLUNTEER *Opportunities!*



ACOLYTE AND CRUCIFER VOLUNTEER OPPORTUNITY!

We are once again interested in knowing which youth wish to acolyte for Sunday worship services (8 & 9:30 am)! Please prayerfully consider this service opportunity and sign up on the google doc where you will find all available openings. Contact Karl Fink at kfink@bethanylutheran.org with any questions.

To volunteer: bit.ly/acolyte-and-crucifer



SUNDAY MORNING COFFEE & DONUT VOLUNTEERS NEEDED!

OPEN TO YOUTH IN GRADES 8-12!

This is a great way to interact with church members, hang out with other youth, and earn funds in your Youth Ministry Account to be used towards any Youth Ministry event. Contact Aimee Coleman at acoleman@bethanylutheran.org for details.

To volunteer: bit.ly/coffee-and-donuts

Giving Proportionately **Luke 21:1-4**

BETHANY'S ALTAR FLOWER FUND!



Flowers are used to decorate the altar every Sunday and you are able to make two types of donations to support this ministry: a general donation and a special request with recognition.

- **A SPECIAL REQUEST WITH RECOGNITION**

This type of donation comes with a special message printed in the Weekly Chimes, Sunday Bulletin, and Bethany Bullet.* **Suggested donation of \$75.**

- **A GENERAL DONATION TO THE ALTAR FLOWER FUND**

* If you are making a **Special Request with Recognition**, please let us know two weeks in advance and specify which Sunday as well as the message you would like printed.

REFER A FRIEND GIVEAWAY

Now through February 28, participants can enter to win one of five \$100 gift cards by sharing their invite link with friends & family. Invitees can enroll and help earn for your organization. Participants will score an additional entry for every person who signs up through their link—the more they refer, the better their chances of winning!

Your personal invite link can be found at the top right of the home page when you open your app. It is the person-shaped icon. There will be a choice to send as either a text message or an email. Please do not share the link on public websites or social media pages. Doing so may expose our Scrip program to fraudulent activity.

To learn more:

Ruth Lopez
BLS Scrip Coordinator
rlopez@bethanylutheran.org
562-420-7783 ext. 58



RaiseRight



WE GIVE HIM BUT HIS OWN

At Bethany we know that “our stuff is not our stuff!” All that we have, all that we are, is a gift from Him. We also know that giving is a spirit-given compulsion. For Jesus Christ, in whose likeness we are being transformed daily, is the ultimate giver. Your gifts fund ministry that give people Jesus. His words, His promises, His presence, His gifts, His comfort, His strength are given through the gifts you are now giving Him. We thank and honor you for these gifts, because they thank and honor Him! Questions? Contact Maraley Shaeffer at mshaeffer@bethanylutheran.org.



There are multiple ways to give to Bethany Lutheran Church including:

Giving Online, Text to Give, Online Bill-Pay, US Mail, Offering Box



Community Connections: Acts 2:44



Mark your calendars for a night of fun, food, and festivities at the **LCMS Youth Gathering Auction** on **Saturday, April 5, 2025!**

WHERE: POA Park (behind Long Beach Town Center)

TIME: Check-in starts at 4:00 PM | Auction runs from 5:00–8:00 PM

This year's theme is **Mardi Gras**, celebrating our youth's journey to New Orleans this July! Enjoy the smooth tunes of **The Beach Dixieland Ramblers**, indulge in fresh **made-to-order beignets** and **Southern Creole cooking**, and join us in raising funds for an unforgettable spiritual formation experience for our youth.

TICKETS:

\$20 for adults

\$10 for kids (10 and under)

Tickets go on sale March 2 and close March 23, 2025.

DON'T MISS THIS EVENING OF JOY, COMMUNITY, AND PURPOSE!

WITH GOD BY MY SIDE:

A Bethany Lutheran Stepping Stones Event



FIRST GRADERS & THEIR PARENT (OR GRANDPARENT, GODPARENT, OTHER LOVING ADULT) ARE INVITED FOR A PIZZA DINNER & CHOCOLATE FOUNTAIN DESSERT WHILE DIVING INTO TOPICS OF FAITH, PRAYER, AND BLESSINGS. WE WILL ENJOY SOME FUN ACTIVITIES AND GAMES RELATED TO OUR TOPIC.

When: Sunday, February 23rd from 5:30 - 7 pm

Where: Youth Center

RSVP: by Wednesday, February 19th

Questions: Alissa Brege at abrege@bethanylutheran.org

TAKE ME OUT TO THE ANGELS GAME!

WITH BETHANY LUTHERAN

SUNDAY, MAY 4TH
1:07 PM GAME TIME
AT ANGEL STADIUM
COST: \$20 PER TICKET
TICKETS ARE LIMITED



QUESTIONS? CONTACT ALISSA BREGE AT ABREGE@BETHANYLUTHERAN.ORG

DON'T FORGET!
EARLY REGISTRATION ENDS FEB. 24*

Bethany Lutheran Church presents
THE BRIANNA ESSWEIN MEMORIAL GOLF TOURNAMENT
FRIDAY, MARCH 28, 2025

- **PRICE:** \$150 per golfer
- **WHERE:** Navy Golf Course at
5660 Orangewood Ave, Cypress 90630
- **CHECK-IN BEGINS:** 6:30AM
- **EARLIER TIME: IN CARTS BY 7:45 AM!**
- **TEE TIME:** 8:00AM
- **BUFFET LUNCH:** 1:00PM
- **QUESTIONS:** Karl Fink - kfink@bethanylutheran.org

YOUR 2025 GOLF COMMITTEE:
MARTY CALLOW, BOB NEWELL,
PHIL LOPEZ, CRAIG DEAN,
TED SPAEFF & MARTY PLATT



*** EARLY REGISTRATION ENDS AT MIDNIGHT ON FEB. 24TH. ON FEB. 25TH THE PRICE INCREASES TO \$175 PER GOLFER (UNTIL SOLD OUT).**

IT'S FRIENDSHIP GROUP TIME!

Friendship Group meets Wednesday, February 19th at 11:30 am in the Parish Lounge.

Please bring your lunch; coffee and tea will be available and dessert will be served. Karl Fink will have a devotion and then we will play bingo - a favorite of all! It's the month of love so we will continue the theme of Valentine's Day.

Join us for an afternoon of fun and fellowship!



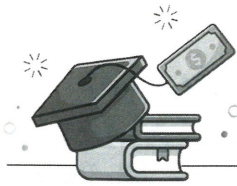
Mom Co.

Date: second Tuesdays
Time: 8:30 - 9:30 am
Location: Youth Center

A time for moms to connect with one another, have a time of devotion, learn & grow, build one another up & snack on breakfast treats together.

Questions? Contact Alissa Brege at abrege@bethanylutheran.org.





BEUTEL SCHOLARSHIP GRANT APPLICATIONS HAVE ARRIVED!

Beutel Scholarship Grant Applications are now being accepted for academic year 2025-2026 and are available in the Church Office. These applications are for students attending a college or university of our Lutheran Church Missouri Synod in preparation for a full-time career as a pastor, teacher, deaconess, youth director, social worker, lay missionary worker, medical missionary, or parish worker. The purpose of the grant is to encourage our young people to pursue a career in church work and to give them assistance in reaching this goal. All scholarships are awarded on an annual basis. If a student needs scholarship help for the school term beginning in the fall of 2025, they must apply between January 15 and March 15 of this year. Applications are available in the Church Office for completion in a folder marked **BEUTEL SCHOLARSHIPS**.

IN ORDER FOR STUDENTS TO BE ELIGIBLE, THEY MUST RETURN APPLICATIONS TO THE CHURCH OFFICE (SPIRITUAL LIFE BOX) ON OR BEFORE SATURDAY, MARCH 15.

IF YOU HAVE ANY QUESTIONS, PLEASE CONTACT JIM SWICK AT (562) 714-3196.

Creative All are welcome
Crafters Retreat
Come join us!

If you are a sewer, quilter, knitter, cross-stitcher, crocheter, scrapbooker, jeweler, painter, woodworker, or all-around crafter and you would love to have uninterrupted time to finish a project or start something new...this is for you!

Feb 21-22 We will gather in Bethany's Parish Lounge on Friday and craft the day away. Doors will open at 10 am. Stay as long as you want but the lights will be on until 10 pm. We will return on Saturday morning at 8 am until 8 pm.

2025

rsvp or questions to: Cindy Morlok [562-972-2747 or cindylula@twc.com] or Anita Armbrust [310-259-4766 or dogbigredbear@yahoo.com]

JOIN US FOR COOK'S NIGHT OUT AT WAHOO'S!

Support our 8th graders going to Washington DC and get a night off from cooking on **Wednesday, February 26th**.

Come out to Wahoo's (4201 McGowen St. #205, Long Beach, CA 90808). Wahoo's will donate 20% of your entire purchase to help support Bethany Lutheran Church & School. Please bring or show flyer at the register. Flyers are available for pickup in the school office or follow the link provided in the Bethany Bullet. (Not receiving the Bullet yet? Scan the QR code on the back page to sign up!)



Join us for Game Day at Bethany Lutheran!

Day: Tuesday, March 4th

Time: 11:30 am - 1:30 pm

Place: Parish Lounge

snacks
drinks

cards &
board games

Questions? Contact Cheryl at magicalviewcp@gmail.com.

BETHANY LUTHERAN CHURCH PRESENTS:

"ESTABLISH THE WORK OF OUR HANDS"

A WOMEN'S RETREAT

with special retreat leader
DR. CAROL McDANIEL

Friday, June 6 - Saturday, June 7
at Concordia University in Irvine

*Event begins with dinner on Friday
and ends after dinner on Saturday!*

**RETREAT COST
IS \$180**

**SAVE YOUR SPOT
WITH \$20 DEPOSIT!**

Use this QR
code to
Save your Spot
or
Fully Register



**LESS THAN
20 SPOTS LEFT!
SEND YOUR
DEPOSIT SOON!**

UPCOMING YOUTH GROUP

DATES

Scan the QR code to learn more about our children and youth ministries and to see a full list of upcoming events!



QUESTIONS?

Children & Family Ministries:
 Alissa Bregre
 562.421.4771 ext. 13
abregre@bethanylutheran.org

Youth & Young Adult Ministries:
 Kayleigh Lopez
 562.421.4771 ext. 18
klopez@bethanylutheran.org



HAVE YOU SIGNED UP FOR THE BETHANY BULLET?



The Bethany Bullet is a weekly capsule of worship highlights and big information that your brain may or may not have 'downloaded' from the prior Sunday. The purpose is to bolster you

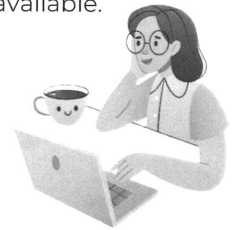
In faith, build you up in the key Biblical themes shared the previous Sunday in worship, to bring to mind the important issues on Bethany's plate and to broaden your awareness of opportunities of service to your Lord, your church, and community.

DO YOU HAVE AN ARTICLE FOR THE CHIMES?

Please submit all articles by **Wednesday** to kloya@bethanylutheran.org to be printed the following Sunday's Chimes. Please note: Articles may be reformatted in order to fit within the space available.

Thank you for your understanding.

*Blessings,
Kasey Loya*



DO YOU HAVE A PRAYER REQUEST OR DESIRE INFORMATION ABOUT A MINISTRY, MEMBERSHIP, OR ONLINE GIVING?



WOULD YOU LIKE TO HEAR TODAY'S OR A PREVIOUS SERMON AGAIN?

You can hear them as podcasts at bethanylutheran.org



WANT TO SEE IT AGAIN?

Today's 8 am service will be live-streamed on our YouTube channel:

