





THE WEEKLY
CHIMES
BETHANY LUTHERAN CHURCH

 4644 Clark Ave.
Long Beach, CA 90808
 (562) 421-4711
 bethanylutheran.org
 Bethany.Long.Beach
 @BethanyLutheran
LongBeach

TODAY

IT'S EGGS-TRAVAGANZA TIME!



Join us today at 11 am in the gym for our annual Easter EGGS-travaganza... We'll have an egg hunt, crafts, snacks, and a devotion!

See you there!

God's Comfort and Peace to



the family and friends of Jerry Swanson who went home to his heavenly father on April 6, 2025.

May the love of God surround you, offering comfort and peace in the midst of sorrow.

A Memorial Service for Dorothy Stauch



Dorothy was a member of the Holy Cross Community for nearly 50 years prior to moving to Idaho.

Those who knew her and her family rejoice in her transfer to the church triumphant and can join together in affirmation of that hope at her memorial service on Saturday, May 3rd at 11 am at Bethany Lutheran Church.

PLEASE PRAY FOR:

Kevin Dart
Pat Demetri
David Gamble
Betty Greene
Lynda Kernahan
John Lightle
Phyllis Lee
Vanessa Lee
Marge Lorenz
Tom Mooney
Larry Neasel
Christy Pierce
Mike Pierce
Suzanne Reed
Kat Totten
Eno Uti



Worshipping Faithfully Hebrews 10:25



IMPORTANT SUNDAY WORSHIP AND BIBLE STUDY SCHEDULE *Updates!*

SERVICE SCHEDULE:

8 am
9:30 am
11 am

COMMUNION SCHEDULE:

1st Sunday: all services
2nd Sunday: 9:30 am only
3rd Sunday: all services
4th Sunday: 9:30 am only

BIBLE STUDY SCHEDULE:

"Lessons of the Day" will be led by a member of the ministry staff at 9:30AM in the Multi-Purpose Room (# 215) located at the top of the south side staircase in Freedom Square.

Women's and Men's studies will be led by congregational members at 10:45AM. Location varies. Please contact the church office for more information.

SUNDAY MORNING NURSERY CARE:

We love kids here at Bethany! **We offer nursery care during both our 8:00 and 9:30AM services.** Infants through pre-school kids love connecting with friends & enjoy playing with the toys while listening to the service playing. We have a fantastic team that are highly qualified caretakers.

Drop off starts at 7:50AM for the 8:00AM service and at 9:20AM for the 9:30AM service. Please make your way across Friendship Square (the courtyard outside) to sign your little one in.

UNDER GRACE, UNDER 8:

Children ages two (and who are potty-trained) through second grade are invited to join us for songs, crafts, stories that help them to better understand Jesus abundant love for them and the grand adventures of the Bible!

Under Grace, Under 8 normally happens during our 9:30AM worship service. Kids will be invited from Children's Message to join in the fun and parents can pick up their kids just following the service at the Parish Lounge.

If you haven't filled out a Yearlong Permission Form this year yet, please use the QR code here. Questions? Contact Alissa Brege - Minister to Children & Families: 562-421-4711, ext. 13 or abrege@bethanylutheran.org



HOLY WEEK WORSHIP SERVICES

at Bethany Lutheran Church

PALM SUNDAY WORSHIP SERVICES:

Sunday, April 13th at 8 and 9:30, and 11 am

MAUNDY THURSDAY WORSHIP SERVICE:

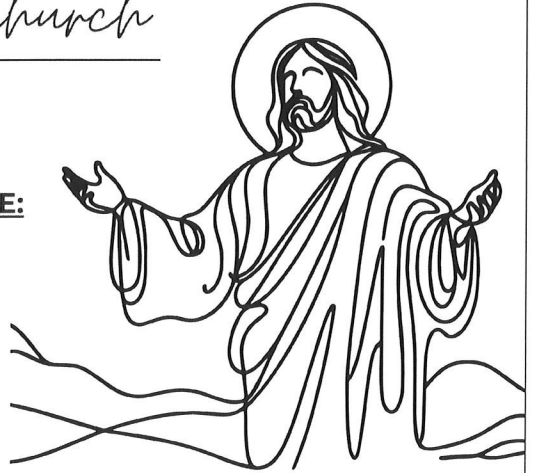
Thursday, April 17th at 6:30 pm

GOOD FRIDAY WORSHIP SERVICE:

Friday, April 18 at 1 pm OR 6:30 pm

EASTER FESTIVAL WORSHIP SERVICES:

Sunday, April 20th at 8, 9:30, and 11 am



JOIN US FOR THE WAY OF THE CROSS!

Bethany Lutheran's middle school students will be leading a special chapel service on Wednesday, April 16th. "The Way of the Cross" follows Jesus through Holy Week and His journey to the cross for us.

Guests are welcome to join the 9:00 AM group which starts at the lunch tables and takes a guided walk around campus while visiting stations from Palm Sunday through Christ's victorious resurrection. The walk takes 30-40 minutes.

"It's hard to believe isn't it? First a hero in a parade and in a few short days a man hated by all and punished unjustly...for you and me. Let's take a walk down the way Jesus took for us...THE WAY OF THE CROSS."



FRIENDSHIP GROUP!

Bethany's middle school would love to invite you to join their "The Way of the Cross" chapel service on Wednesday, April 16th!

Where: starting at the lunch tables

When: 9:00, 9:05, or 9:10 am



BETHANY LUTHERAN IN CYPRESS,

Holy Cross Campus update!



TO SEE
PICTURES OF
THE CAMPUS,
SCAN ME!



Construction in Cypress is making significant progress! Interior demo is complete . Exterior demo is underway. Forming for new chancel is beginning and interior decor is nearly selected.

Our multisite (location) congregation is getting closer to completion daily; continue to pray fervently that through our ministry the Lord, Gathers, Connects and Sends into Long Beach, Cypress, our neighboring communities and beyond.

Serving Passionately **Ephesians 2:10**

YOUTH VOLUNTEER *Opportunities!*



ACOLYTE AND CRUCIFER VOLUNTEER OPPORTUNITY!

We are once again interested in knowing which youth wish to acolyte for Sunday worship services (8 & 9:30 am)! Please prayerfully consider this service opportunity and sign up on the google doc where you will find all available openings. Contact Karl Fink at kfink@bethanylutheran.org with any questions.

To volunteer: bit.ly/acolyte-and-crucifer



SUNDAY MORNING COFFEE & DONUT VOLUNTEERS NEEDED!

OPEN TO YOUTH IN GRADES 8-12!

This is a great way to interact with church members, hang out with other youth, and earn funds in your Youth Ministry Account to be used towards any Youth Ministry event. Contact Aimee Coleman at acoleman@bethanylutheran.org for details.

To volunteer: bit.ly/coffee-and-donuts

Giving Proportionately **Luke 21:1-4**

WE GIVE HIM BUT HIS OWN

At Bethany we know that “our stuff is not our stuff!” All that we have, all that we are, is a gift from Him. We also know that giving is a spirit-given compulsion. For Jesus Christ, in whose likeness we are being transformed daily, is the ultimate giver. Your gifts fund ministry that give people Jesus. His words, His promises, His presence, His gifts, His comfort, His strength are given through the gifts you are now giving Him. We thank and honor you for these gifts, because they thank and honor Him! Questions? Contact Maraley Shaeffer at mshaeffer@bethanylutheran.org.

THERE ARE MULTIPLE WAYS TO GIVE TO BETHANY INCLUDING:

Giving Online, Text to Give, Online Bill-Pay, US Mail, Offering Box, **and now Apple Pay, Google Pay, Venmo, and PayPal!**



CALLING ALL TECH SUPPORTERS!

Here's something you may not be thinking about: The broadcast and live-worship -aid tech equipment breaks down, goes obsolete, and needs upgrading. Whether you are an in-person-only congregant, an online-only worshipper, a sermon podcast listener-viewer, or a mix of all of them, you can help our in-person and online worship ministry continue to thrive through the gift of technology. You can give a one-time gift, or even choose to include a regular, recurring offering into the 'tech-giving fund'! Use the QR code to get to the online -giving site, or call Maraley in the church office for assistance with Tech-Giving! Thanks for being a Tech-Supporter!



ADD SOME FLAVOR TO YOUR EARNING POTENTIAL!

Now you can earn by dining at your favorite local restaurants. Local dining brings thousands of new earning opportunities to RaiseRight—outside of gift cards and shopping online. Log in to the RaiseRight app to search restaurants near you and get started.

How it works:

1. Link a credit or debit card in your RaiseRight account.
2. Search for participating local restaurants in the app (some restaurants have limited days when earning is available)
3. Dine and earn 5% when you pay with your linked card.

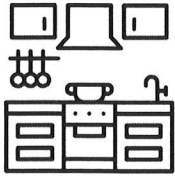
To learn more:

Ruth Lopez
BLS Scrip Coordinator
rlopez@bethanylutheran.org
562-420-7783 ext. 58



RaiseRight





BETHANY'S KITCHEN REMODEL

Updates!

Under Construction: That's right, Bethany's kitchen is indeed under construction. A generous thank offering from a family, the gifts given by many on "Giving Tuesday," and our continued generosity to the Renaissance line item is funding our kitchen remodel.

In 2017 when Bethany engaged in a capital campaign for a "Renaissance" of our campus, we accomplished a great deal of needed enhancing, updating and refining of our facilities. Our kitchen however was not addressed due to a lack of funding. Our continued giving to the Renaissance results in the ability for our facilities team to address campus needs. While most of the cost of our kitchen remodel is being covered by a generous thank offering and our "Giving Tuesday" gifts, your continued generous funds directed to the Renaissance fund is covering the rest of the expenses. The Renaissance fund remains in place, and will retain its title and purpose as it enables our Servant Leader Team: Facilities (the artists formerly known as Trustees) to tackle campus projects outside and beyond our budget.

Thank you for your continued generosity!

Community Connections **Acts 2:44**

New **WOMEN'S BIBLE STUDY!** Starting Sunday, April 27th • 10:45 am in Room 217



THE SCANDAL
OF THE
KINGDOM

WORKBOOK

BASED ON THE BOOK BY
DALLAS WILLARD
WRITTEN BY JAN JOHNSON



The Scandal of the Kingdom Workbook: How the Parables of Jesus Revolutionize Life

A runaway son. A frantic search for a coin. A farmer paying for hired help. Jesus used ordinary situations like these to teach extraordinary truths about following Him. Come explore Jesus' parables with us:

- Hearing What Jesus Said: The truths that Jesus was revealing
- Thinking About What Jesus Said: How those truths apply to you
- Responding to What Jesus Said: What actions to take

Order WORKBOOK by Jan Johnson online and we will discuss the introduction the first week. For more info, please contact Mary Kay Esswein through the church office - 562-421-4711 ext. 12.

BETHANY LUTHERAN CHURCH & SCHOOL IS *Hiring!*

DIRECTOR OF FINANCE AND OPERATIONS



Bethany Lutheran Church and School is seeking qualified candidates for the position of Director of Finance and Operations. This position will oversee the financial and human resources responsibilities of our organization for both the church and the school, along with overseeing some of our operational functions. This is a full-time benefitted position with an anticipated start date in late Spring 2025.

A full job description is available here: <https://bit.ly/BethanyDPO>. If you are interested in this position please submit your name, email address, and a brief summary of your qualifications to jobs@bethanylutheran.org.

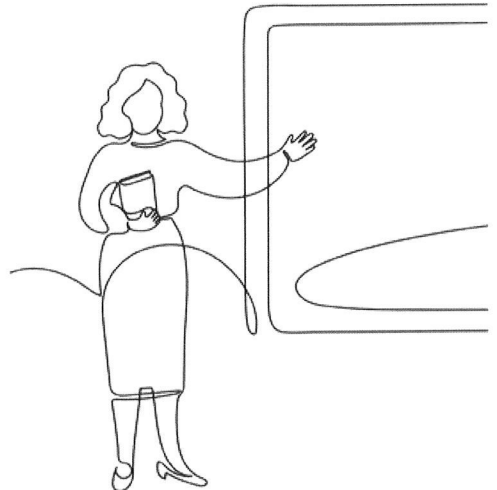
We are sad to lose our beloved Kindergarten teacher, Mrs. Blake, but we wish her God's blessings in Texas! Now we are praying and looking for Bethany's next Kindergarten teacher:

POSITION DESCRIPTION:

Teach full-day Kindergarten, providing a classroom environment that is Christ-centered, engaging and developmentally appropriate. Develop strong relationships with TK teachers and students/families to build a smooth transition from preschool to K-8 school.

Candidates must possess excellent communication and collaboration skills, the desire to work cooperatively with team-mates (including a full-day aide) and a whole-parish understanding of ministry. Teaching credential a must. A rostered teacher is preferred. **Contact: Mary Fink at mfink@bethanylutheran.org.**

KINDERGARTEN TEACHER





JOIN OUR VBS TEAM IN AN ULTIMATE ALASKAN ADVENTURE AS WE EXPLORE THE FAITHFUL FRIENDSHIP OF JESUS!

Vacation Bible School is June 23-27, 2025

Volunteers for those entering 7th grade - Adults Needed!

IMPORTANT - The VBS Program runs 8:30AM to Noon June 23-27; but **we ask for volunteers to arrive by 8:00AM each day.** Coffee & treats will be available every morning.

VBS Staff Training -

- We have two dates for you to choose from for **In-Person Training Dates: Tuesday, May 20 from 5:30-6:30PM** and **Wednesday, May 28 from 5:30-6:30PM** in the Youth Room.
- **If you are 18 years or younger**, you need to make every effort to attend In-Person Training!
- If you are unable to make the In-Person Training, there will be an online training option for ALL roles.

VBS WORKDAY & SET-UP - Mark your calendars for **Saturday, June 21 from 9:00AM to 1:00pm** to help decorate and set up for our VBS week! More hands make for lighter work. We could really use your help.

VBS Volunteer Staff Commissioning - Sunday, June 22 at each of the morning services on Bethany's campus. The commissioning will happen at the beginning of the service. Volunteers will be invited forward at whichever service they plan to attend.

Questions? Contact Kayleigh Lopez at klopez@bethanylutheran.org or 309-397-6583.



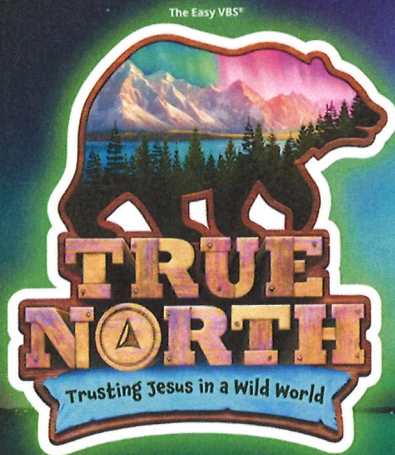
Gathered



Connected



Sent



JOIN US FOR AN AMAZING WEEK!

BETHANY LUTHERAN CHURCH
4644 CLARK AVENUE, LONG BEACH, CA
90808

JUNE 23-27, 2025, 8:30A.M.-NOON

THIS **FREE** VBS IS FOR AGES
3 YEARS OLD AND POTTY-TRAINED
THROUGH ENTERING 6TH GRADE.

REGISTRATION IS OPEN
APRIL 13TH THRU JUNE 20TH

TAKE ME OUT TO THE ANGELS GAME!

WITH BETHANY LUTHERAN

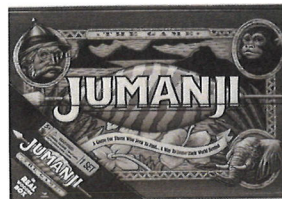
SUNDAY, MAY 4TH
1:07 PM GAME TIME
AT ANGEL STADIUM
COST: \$20 PER TICKET
TICKETS ARE LIMITED



QUESTIONS?
CONTACT ALISSA BREGE AT
ABREGE@BETHANYLUTHERAN.ORG

SAVE THE DATE FOR FUN GAME DAY *ONCE AGAIN* May 6, 2025

Bethany Parish Lounge 11:30 to 1:30
food drinks and snacks and pie



A NEW GAME FOR YOU TO TRY

BETHANY *on the go!*

A 7-NIGHT ALASKAN CRUISE

DEPARTING JUNE 23, 2026

Bethany has had a rich heritage of traveling together to all parts of the globe through it's travel group. A final choice for the 2026 trip has been made!



Join us for 7- Night Cruise **from \$3,650**

COMPLIMENTARY SERVICES & AMENITIES

- Welcome bottle of champagne
- Butler Service in every suite and guest room
- 24-Hour in-suite dining
- Unlimited beverages* (alcohol and soft drinks)
- Specialty Dining at Umi Uma and Osteria d'Ovidio*
- Turndown service
- Shoeshine service
- Assistance with packing and unpacking
- Pillow menu
- Unlimited standard wifi
- And more

*Restrictions apply.

We're thrilled to invite you on a breathtaking journey through the untouched, majestic landscapes of Alaska aboard the luxurious Crystal Symphony. Set sail on June 23, 2026, and experience nature like never before, with Crystal's renowned all-inclusive amenities ensuring your voyage is nothing short of extraordinary.

We have secured group rates aboard this sailing averaging \$1000 off per person when compared to current pricing.

This isn't just a cruise, it's a call to find your wander in the captivating embrace of Alaska. Stay tuned during the booking process for details on our optional land extension to Denali National Park. Scan the QR for more info.





GREAT NEWS...VENUE CHANGE!

“ESTABLISH THE WORK OF OUR HANDS”

A WOMEN’S RETREAT

with special retreat leader
DR. CAROL McDANIEL

Friday, June 6 - Saturday, June 7
at Bethany Lutheran Church

Event begins at 5 pm on Friday evening. Then join us for breakfast on Saturday morning as the women’s retreat fun continues! We will wrap up at 5 pm on Saturday evening.

**RETREAT COST
IS NOW \$85.**

**CONSIDER JOINING THE
50 WOMEN WHO HAVE
ALREADY REGISTERED!**



*Registration
closes at
midnight on
May 16th.*

IT’S FRIENDSHIP GROUP TIME!

**Friendship Group meets
Wednesday, April 16th at
11:30 am in the Parish Lounge.**

Our theme will be Easter! Please bring your lunch; coffee and dessert will be served. This month Pastor Kyle will have a devotion and then we will play bingo - a favorite of all!

Join us for an afternoon of fun and fellowship!



Mom Co.

Date: second Tuesdays
Time: 8:30 - 9:30 am
Location: Youth Center

A time for moms to connect with one another, have a time of devotion, learn & grown, build one another up & snack on breakfast treats together.

Questions? Contact Alissa Brege at abrege@bethanylutheran.org.



UPCOMING YOUTH GROUP DATES

Scan the QR code to learn more about our youth ministries and to see a full list of upcoming events!



QUESTIONS?

Children & Family Ministries:

Alissa Brege
562.421.4711 ext. 13
abrege@bethanylutheran.org

Youth & Young Adult Ministries:

Kayleigh Lopez
562.421.4711 ext. 18
klopez@bethanylutheran.org



HAVE YOU SIGNED UP FOR THE BETHANY BULLET?



The Bethany Bullet is a weekly capsule of worship highlights and big information that your brain may or may not have 'downloaded' from the prior Sunday. The purpose is to bolster you

In faith, build you up in the key Biblical themes shared the previous Sunday in worship, to bring to mind the important issues on Bethany's plate and to broaden your awareness of opportunities of service to your Lord, your church, and community.

DO YOU HAVE AN ARTICLE FOR THE CHIMES?

Please submit all articles by **Wednesday** to kloya@bethanylutheran.org to be printed the following Sunday's Chimes. *Please note: Articles may be edited and reformatted in order to fit within the space available and all submissions will be sent to a pastor for final approval. Thank you for your understanding.*

*Blessings,
Kasey Loya*



DO YOU HAVE A PRAYER REQUEST OR DESIRE INFORMATION ABOUT A MINISTRY, MEMBERSHIP, OR ONLINE GIVING?



WOULD YOU LIKE TO HEAR TODAY'S OR A PREVIOUS SERMON AGAIN?

You can hear them as podcasts at bethanylutheran.org



WANT TO SEE IT AGAIN?

Today's 8 am service will be live-streamed on our YouTube channel:

