

THE WEEKLY  
**CHIMES**  
BETHANY LUTHERAN CHURCH

📍 4644 Clark Ave.  
Long Beach, CA 90808  
☎ (562) 421-4711  
🌐 bethanylutheran.org  
f Bethany.Long.Beach  
📺 @BethanyLutheran  
LongBeach

TODAY'S FLOWERS ARE GIVEN

*to the glory of God:*

IN CELEBRATION OF 40 YEARS OF MARRIAGE  
FOR JEFF AND DIANA ORR

*May God bless your marriage  
today and always.*

PLEASE PRAY FOR:

Kevin Dart  
David Gamble  
Betty Greene  
Lynda Kernahan  
John Lightle  
Phyllis Lee  
Vanessa Lee  
Marge Lorenz  
Tom Mooney  
Larry Neasel  
Christy Pierce  
Mike Pierce  
Suzanne Reed  
Kat Totten  
Eno Uti

*God's Comfort and Peace to:*



the family and friends of Patt Demetri who went  
home to her heavenly father on April 12, 2025.

*May the love of God surround you, offering  
comfort and peace in the midst of sorrow.*

*A Memorial Service for Dorothy Stauch*

Dorothy was a member of the Holy Cross Community for  
nearly 50 years prior to moving to Idaho. Those who knew  
her and her family rejoice in her transfer to the church  
triumphant and can join together in affirmation of that  
hope at her memorial service on Saturday, May 3rd at 11  
am at Bethany Lutheran Church.



# Worshipping Faithfully: Hebrews 10:25



## SUNDAY MORNING WORSHIP AND BIBLE STUDY SCHEDULE

### SERVICE SCHEDULE:

8 am • 9:30 am • 11 am

### COMMUNION SCHEDULE:

1st Sunday: all services

2nd Sunday: 9:30 am only

3rd Sunday: all services

4th Sunday: 9:30 am only

### BIBLE STUDY SCHEDULE:

**"Lessons of the Day"** will be led by a member of the ministry staff at 9:30AM in the Multi-Purpose Room (# 215) located at the top of the south side staircase in Freedom Square.

**Women's and Men's studies** will be led by congregational members at 10:45AM. Location varies. Please contact the church office for more information.



## SUNDAY MORNING CHILDREN'S MINISTRY

### NURSERY CARE:

We love kids here at Bethany! **We offer nursery care during both our 8:00 and 9:30AM services.** Infants through pre-school kids love connecting with friends & enjoy playing with the toys while listening to the service playing. We have a fantastic team that are highly qualified caretakers.

Drop off starts at 7:50AM for the 8:00AM service and at 9:20AM for the 9:30AM service. Please make your way across Friendship Square (the courtyard outside) to sign your little one in.

### UNDER GRACE, UNDER 8:

**Children ages two (and who are potty-trained) through second grade** are invited to join us for songs, crafts, stories that help them to better understand Jesus abundant love for them and the grand adventures of the Bible!

**Under Grace, Under 8 normally happens during our 9:30AM worship service.** Kids will be invited from Children's Message to join in the fun and parents can pick up their kids just following the service at the Parish Lounge.

If you haven't filled out a Yearlong Permission Form this year yet, please use the QR code here. Questions? Contact Alissa Brege - Minister to Children & Families: 562-421-4711, ext. 13 or [abrege@bethanylutheran.org](mailto:abrege@bethanylutheran.org)





## BETHANY LUTHERAN IN CYPRESS,

*Holy Cross Campus update!*



TO SEE  
PICTURES OF  
THE CAMPUS,  
SCAN ME!



Construction in Cypress is making significant progress! Interior demo is complete. Exterior demo is underway. Forming for new chancel is beginning and interior decor is nearly selected.

Our multisite (location) congregation is getting closer to completion daily; continue to pray fervently that through our ministry the Lord, Gathers, Connects and Sends into Long Beach, Cypress, our neighboring communities and beyond.

*Serving Passionately* Ephesians 2:10



## YOUTH VOLUNTEER Opportunities!

### ACOLYTE AND CRUCIFER VOLUNTEER OPPORTUNITY!

We are once again interested in knowing which youth wish to acolyte for Sunday worship services (8 & 9:30 am)! Please prayerfully consider this service opportunity and sign up on the google doc where you will find all available openings. Contact Karl Fink at [kfink@bethanylutheran.org](mailto:kfink@bethanylutheran.org) with any questions.

To volunteer: [bit.ly/acolyte-and-crucifer](https://bit.ly/acolyte-and-crucifer)

### SUNDAY COFFEE & DONUT VOLUNTEERS NEEDED!

**OPEN TO YOUTH IN GRADES 8-12!**

This is a great way to interact with church members, hang out with other youth, and earn funds in your Youth Ministry Account to be used towards any Youth Ministry event. Contact Aimee Coleman at [acoleman@bethanylutheran.org](mailto:acoleman@bethanylutheran.org) for details.

To volunteer: [bit.ly/coffee-and-donuts](https://bit.ly/coffee-and-donuts)

# *Giving Proportionately* **Luke 21:1-4**

## **WE GIVE HIM BUT HIS OWN**

At Bethany we know that "our stuff is not our stuff!" All that we have, all that we are, is a gift from Him. We also know that giving is a spirit-given compulsion. For Jesus Christ, in whose likeness we are being transformed daily, is the ultimate giver. Your gifts fund ministry that give people Jesus. His words, His promises, His presence, His gifts, His comfort, His strength are given through the gifts you are now giving Him. We thank and honor you for these gifts, because they thank and honor Him! Questions? Contact Maralee Shaeffer at [mshaeffer@bethanylutheran.org](mailto:mshaeffer@bethanylutheran.org).

### **THERE ARE MULTIPLE WAYS TO GIVE TO BETHANY INCLUDING:**

Giving Online, Text to Give, Online Bill-Pay, US Mail, Offering Box, **and now Apple Pay, Google Pay, Venmo, and PayPal!**



## **CALLING ALL TECH SUPPORTERS!**

Here's something you may not be thinking about: The broadcast and live-worship -aid tech equipment breaks down, goes obsolete, and needs upgrading. Whether you are an in-person-only congregant, an online-only worshipper, a sermon podcast listener-viewer, or a mix of all of them, you can help our in-person and online worship ministry continue to thrive through the gift of technology. You can give a one-time gift, or even choose to include a regular, recurring offering into the 'tech-giving fund'! Use the QR code to get to the online -giving site, or call Maralee in the church office for assistance with Tech-Giving! Thanks for being a Tech-Supporter!



## **MAJOR EARNINGS ARE JUST AROUND THE CORNER!**

Get ready to earn up to 23% from 125+ brands perfect for spring gifting, everyday expenses, travel plans and more.

- April 26 - May 9: Mother's Day bonuses
- 60+ brands, earnings up to 23%
- Bonuses on all card types
- May 2 - 5: Raise Days
- 60+ MORE brands, earnings up to 18%
- Bonuses on eGift cards and reloaded gift cards only
- Four days to shop instead of the usual two

Haven't started earning yet? Get started at [raiserright.com/m/startearning](https://raiserright.com/m/startearning) today!

### **To learn more:**

Ruth Lopez  
BLS Scrip Coordinator  
[rlopez@bethanylutheran.org](mailto:rlopez@bethanylutheran.org)  
562-420-7783 ext. 58



**RaiseRight.**



# Community Connections: Acts 2:44



## MINISTRY OF MUSIC GRANT APPLICATIONS *Available Now!*

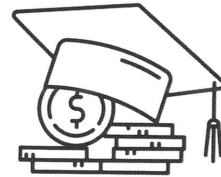
The Music Ministry of Bethany Lutheran is offering grants to qualified applicants who plan on taking some type of music lessons or are majoring/minoring in music at the college level.

Music Ministry Grant Applications can be picked up in the church office. **All applications must be received by May 15th**; grant awards will be announced on May 18th.

Questions? Please call the church office and speak with Mara Widmann at 562-421-4711 ext. 55.

## *Congratulations* TO THE BEUTEL GRANT RECIPIENTS!

The Beutel Scholarship Grant awards for academic year 2025-2026 have been awarded to Caleb O'Conner, Grace DeJongh, Lilian Alwood and Soren Widmann. God has called each of these Bethany young adults to do His work in our church, and we look forward to watching His good plan unfold in each of them.



## *New* WOMEN'S BIBLE STUDY! Starting Sunday, April 27th • 10:45 am in Room 217



### THE SCANDAL OF THE KINGDOM

### WORKBOOK

BASED ON THE BOOK BY  
DALLAS WILLARD  
WRITTEN BY JAN JOHNSON



## The Scandal of the Kingdom Workbook: How the Parables of Jesus Revolutionize Life

*A runaway son. A frantic search for a coin. A farmer paying for hired help. Jesus used ordinary situations like these to teach extraordinary truths about following Him. Come explore Jesus' parables with us:*

- Hearing What Jesus Said: The truths that Jesus was revealing
- Thinking About What Jesus Said: How those truths apply to you
- Responding to What Jesus Said: What actions to take

Order WORKBOOK by Jan Johnson online and we will discuss the introduction the first week. For more info, please contact Mary Kay Esswein through the church office - 562-421-4711 ext. 12.



## ROOTED 2025 CELEBRATION REPORT

Over the past three years, 143 adults have shared the ROOTED experience in small groups together at Bethany! That's 28% of our congregation - growing deeper connections with the Lord and each other and sharing Jesus with the community! Last week, 36 of us celebrated God's amazing work in our lives by sharing faith stories, carboard testimonies, reports on service projects, adult baptism and a festive luncheon!

Special thanks to group facilitators Scott Andersen, Bronwyn Estephan, Sue Swick, Mike and Debbie Castlen (couple's group); Assistants Linda Stacker, Denyne Oliver, Linda Tysol and Mary Kay Esswein and to Felix and Elsie Rivera for video & tech support! Don't miss your chance to experience ROOTED next spring in 2026!!



Mary Kay Esswein, Scott Andersen, Emily Chartier, Nola Seaman, Phil Lopez

**Your Rooted Administration Team**



### 2002 HONDA ODYSSEY

- **GOOD CONDITION**
- **LOW MILEAGE**
- **\$12,000 OBO**

INTERESTED? CONTACT MARYELLEN CRABTREE AT (714) 309-7190.

*Thank you*

Dear Bethany Lutheran Church,

We want to thank you for being such a BLESSING on Saturday. We loved having you. Thank you for the food, games, toilet paper, baby wipes, paper towels, diapers, and all the love you displayed. You all are AMAZING!

God Bless You,

Rebecca  
Younger

*and*

New Life  
Beginnings



# BETHANY LUTHERAN CHURCH & SCHOOL IS *Hiring!*

## DIRECTOR OF FINANCE AND OPERATIONS



Bethany Lutheran Church and School is seeking qualified candidates for the position of Director of Finance and Operations. This position will oversee the financial and human resources responsibilities of our organization for both the church and the school, along with overseeing some of our operational functions. This is a full-time benefitted position with an anticipated start date in late Spring 2025.

A full job description is available here:

**<https://bit.ly/BethanyDPO>**. If you are interested in this position please submit your name, email address, and a brief summary of your qualifications to **[jobs@bethanylutheran.org](mailto:jobs@bethanylutheran.org)**.

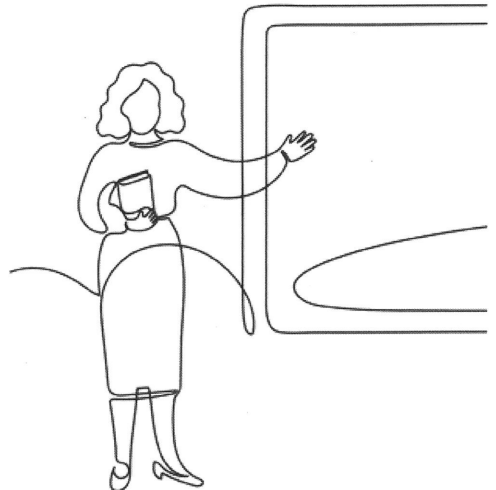
*We are sad to lose our beloved Kindergarten teacher, Mrs. Blake, but we wish her God's blessings in Texas! Now we are praying and looking for Bethany's next Kindergarten teacher:*

### POSITION DESCRIPTION:

Teach full-day Kindergarten, providing a classroom environment that is Christ-centered, engaging and developmentally appropriate. Develop strong relationships with TK teachers and students/families to build a smooth transition from preschool to K-8 school.

Candidates must possess excellent communication and collaboration skills, the desire to work cooperatively with team-mates (including a full-day aide) and a whole-parish understanding of ministry. Teaching credential a must. A rostered teacher is preferred. **Contact: Mary Fink at [mfink@bethanylutheran.org](mailto:mfink@bethanylutheran.org).**

## KINDERGARTEN TEACHER





**JOIN OUR VBS TEAM IN AN ULTIMATE ALASKAN ADVENTURE  
AS WE EXPLORE THE FAITHFUL FRIENDSHIP OF JESUS!**

**Vacation Bible School is June 23-27, 2025**

**Volunteers for those entering 7th grade - Adults Needed!**

**IMPORTANT** - The VBS Program runs 8:30AM to Noon June 23-27; but **we ask for volunteers to arrive by 8:00AM each day.** Coffee & treats will be available every morning.

**VBS Staff Training -**

- We have two dates for you to choose from for **In-Person Training Dates: Tuesday, May 20 from 5:30-6:30PM** and **Wednesday, May 28 from 5:30-6:30PM** in the Youth Room.
- **If you are 18 years or younger**, you need to make every effort to attend In-Person Training!
- If you are unable to make the In-Person Training, there will be an online training option for ALL roles.

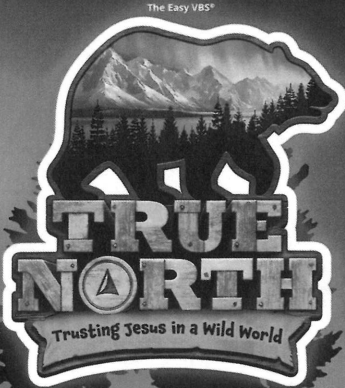
**VBS WORKDAY & SET-UP** - Mark your calendars for **Saturday, June 21 from 9:00AM to 1:00pm** to help decorate and set up for our VBS week! More hands make for lighter work. We could really use your help.

**VBS Volunteer Staff Commissioning - Sunday, June 22** at each of the morning services on Bethany's campus. The commissioning will happen at the beginning of the service. Volunteers will be invited forward at whichever service they plan to attend.

**Questions?** Contact Kayleigh Lopez at [klopez@bethanylutheran.org](mailto:klopez@bethanylutheran.org) or 309-397-6583.

# JOIN US FOR AN AMAZING WEEK!

BETHANY LUTHERAN CHURCH  
4644 CLARK AVENUE  
LONG BEACH, CA 90808



JUNE 23-27, 2025  
8:30 A.M. - NOON

THIS FREE VBS IS FOR  
AGES 3 YEARS OLD  
AND POTTY-TRAINED -  
ENTERING 6TH GRADE.



## TAKE ME OUT TO THE ANGELS GAME!

WITH BETHANY LUTHERAN

SUNDAY, MAY 4TH  
1:07 PM GAME TIME  
AT ANGEL STADIUM  
COST: \$20 PER TICKET  
TICKETS ARE LIMITED



QUESTIONS?  
CONTACT ALISSA BREGE AT  
ABREGE@BETHANYLUTHERAN.ORG

## SAVE THE DATE FOR FUN GAME DAY ONCE AGAIN

**Tuesday  
May 6, 2025**

Bethany Parish Lounge 11:30 to 1:30

NEW GAME OR BRING  
YOUR OWN FOR US TO TRY



food drinks and snacks and delicious PIE

# BETHANY *on the go!*

## A 7-NIGHT ALASKAN CRUISE

**DEPARTING JUNE 23, 2026**

Bethany has had a rich heritage of traveling together to all parts of the globe through it's travel group. A final choice for the 2026 trip has been made!



Join us for 7- Night Cruise **from \$3,650**

### COMPLIMENTARY SERVICES & AMENITIES

- Welcome bottle of champagne
- Butler Service in every suite and guest room
- 24-Hour in-suite dining
- Unlimited beverages\* (alcohol and soft drinks)
- Specialty Dining at Umi Uma and Osteria d'Ovidio\*
- Turndown service
- Shoeshine service
- Assistance with packing and unpacking
- Pillow menu
- Unlimited standard wifi
- And more

\*Restrictions apply.

We're thrilled to invite you on a breathtaking journey through the untouched, majestic landscapes of Alaska aboard the luxurious Crystal Symphony. Set sail on June 23, 2026, and experience nature like never before, with Crystal's renowned all-inclusive amenities ensuring your voyage is nothing short of extraordinary.

We have secured group rates aboard this sailing averaging \$1000 off per person when compared to current pricing.

This isn't just a cruise, it's a call to find your wander in the captivating embrace of Alaska. Stay tuned during the booking process for details on our optional land extension to Denali National Park. Scan the QR for more info.





**GREAT NEWS...VENUE CHANGE!**

# **“ESTABLISH THE WORK OF OUR HANDS”**

**A WOMEN’S RETREAT**  
with special retreat leader  
**DR. CAROL McDANIEL**

**Friday, June 6 - Saturday, June 7**  
**at Bethany Lutheran Church**

*Event begins at 5 pm on Friday evening. Then join us for breakfast on Saturday morning as the women’s retreat fun continues! We will wrap up at 5 pm on Saturday evening.*

**RETREAT COST  
IS NOW \$85.**

**CONSIDER JOINING THE  
50 WOMEN WHO HAVE  
ALREADY REGISTERED!**



*Registration  
closes at  
midnight on  
May 16th.*

## **CHANGES TO THE LUTHERAN HOUR BROADCAST ARE COMING TO OUR AREA**

As good stewards of the resources God provides, Lutheran Hour Ministries (LHM) works to be strategic in the allocation of those resources. The final broadcast of **The Lutheran Hour®** on KBRT 740 AM will be on April 27, 2025. To find other airings near you, check the broadcast guide at [lhm.org/guide](http://lhm.org/guide).

The Lutheran Hour is available today in many other ways beyond traditional radio. From the American Forces Network, Sirius XM satellite radio, [lutheranhour.org](http://lutheranhour.org), the Connected by LHM mobile app, Amazon Alexa, Spotify, iHeartRadio, YouTube, dialing in on your phone, and more, listeners can hear the weekly sermons whenever and wherever they are.

For more information about Lutheran Hour Ministries, visit [lhm.org](http://lhm.org).



# UPCOMING YOUTH GROUP DATES

Scan the QR code to learn more about our youth ministries and to see a full list of upcoming events!



## QUESTIONS?

**Children & Family Ministries:**

Alissa Brege  
562.421.4771 ext. 13  
abrege@bethanylutheran.org

**Youth & Young Adult Ministries:**

Kayleigh Lopez  
562.421.4771 ext. 18  
klopez@bethanylutheran.org



## HAVE YOU SIGNED UP FOR THE BETHANY BULLET?



**The Bethany Bullet** is a weekly capsule of worship highlights and big information that your brain may or may not have 'downloaded' from the prior Sunday. The purpose is to bolster you

In faith, build you up in the key Biblical themes shared the previous Sunday in worship, to bring to mind the important issues on Bethany's plate and to broaden your awareness of opportunities of service to your Lord, your church, and community.

## DO YOU HAVE AN ARTICLE FOR THE CHIMES?

Please submit all articles by **Wednesday** to [kloya@bethanylutheran.org](mailto:kloya@bethanylutheran.org) to be printed the following Sunday's Chimes. *Please note: Articles may be edited and reformatted in order to fit within the space available and all submissions will be sent to a pastor for final approval. Thank you for your understanding.*

*Blessings,  
Kasey Loya*



## DO YOU HAVE A PRAYER REQUEST OR DESIRE INFORMATION ABOUT A MINISTRY, MEMBERSHIP, OR ONLINE GIVING?



## WOULD YOU LIKE TO HEAR TODAY'S OR A PREVIOUS SERMON AGAIN?

You can hear them as podcasts at [bethanylutheran.org](http://bethanylutheran.org)



## WANT TO SEE IT AGAIN?

Today's 8 am service will be live-streamed on our YouTube channel:

