

THE WEEKLY
CHIMES
BETHANY LUTHERAN CHURCH

📍 4644 Clark Ave.
Long Beach, CA 90808
☎ (562) 421-4711
🌐 bethanylutheran.org
f Bethany.Long.Beach
📺 @BethanyLutheran
LongBeach

TODAY'S FLOWERS ARE GIVEN
to the glory of God:



IN LOVING MEMORY OF OUR BELOVED
MOTHER, GRANDMOTHER, AND FRIEND,
DOROTHY STAUCH BY THE STAUCH FAMILY

*May the love of God surround you,
offering comfort, peace, and joy in
their memory.*

IN THANKFULNESS AND CELEBRATION TO
GOD WHO HAS GRACIOUSLY BLESSED
MARJORIE LORENZ WITH 100 YEARS OF
LIFE AND LOVE BY DONALD AND CAROL
DOSS. HAPPY BIRTHDAY MOM!

*May the light of the Lord
shine upon you and grant you
happiness on this birthday
and in the years to come!*

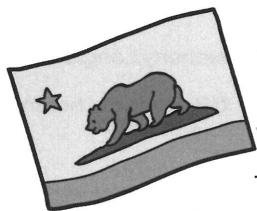


PLEASE PRAY FOR:

Kevin Dart
David Gamble
Betty Greene
Lynda Kernahan
John Lightle
Phyllis Lee
Vanessa Lee
Marge Lorenz
Tom Mooney
Larry Neasel
Christy Pierce
Mike Pierce
Suzanne Reed
Kat Totten
Eno Uti



Worshipping Faithfully Hebrews 10:25



FAREWELL TO THE *Blake Family*

At Bethany, and *The Gathering before Bethany*, the Lord has blessed us with the ministry partnership of Pastor Kyle and Kendell Blake. As the Lord has called them to a new ministry field in the Lone Star State we prepare to say farewell, celebrate the time we've shared and pray God's speed upon them in their new field. Sunday, June 1st will be Pastor Kyle's last Sunday and we will recognize the Blakes congregationally. Throughout the month of May a box will remain in the narthex where we can individually leave them a card of thanks and blessing in recognition that at Bethany He blesses us, and He has certainly done so through their presence.



SUNDAY MORNING WORSHIP AND BIBLE STUDY SCHEDULE

SERVICE SCHEDULE:

8 am • 9:30 am • 11

COMMUNION SCHEDULE:

1st Sunday: all services
2nd Sunday: 9:30 am only
3rd Sunday: all services
4th Sunday: 9:30 am only

BIBLE STUDY SCHEDULE:

"Lessons of the Day" will be led by a member of the ministry staff at 9:30AM in the Multi-Purpose Room (# 215) located at the top of the south side staircase in Freedom Square.

Women's and Men's studies will be led by congregational members at 10:45AM. Location varies. Please contact the church office for more information.



BETHANY CYPRESS CAMPUS (HOLY CROSS)

Construction in Cypress is making significant progress! Interior demo is complete. Exterior demo is underway. Forming for new chancel is beginning and interior decor is nearly selected.

Our multisite (location) congregation is getting closer to completion daily; continue to pray fervently that through our ministry the Lord, Gathers, Connects and Sends into Long Beach, Cypress, our neighboring communities and beyond.

**TO SEE PICTURES
OF THE CAMPUS,
SCAN ME!**



Serving Passionately **Ephesians 2:10**

COMMUNION VOLUNTEERS NEEDED



The church office is looking for a few volunteers to assist with communion prep on the first weekend of each month. The position consists of the set-up and filling of communion cups on Saturday and/or clean-up after services on Sunday.

If you would like to be part of this ministry (or hear more about it), please contact Kasey in the church office at kloya@bethanylutheran.org or 562-421-4711, ext. 12.



Bethany Lutheran Church

LEAD BY SERVING



Gathered



Connected



Sent



FOUNDATION

New constitution
and by-laws
approved by Voters.



BOARD OF DIRECTORS: ELECTED LEADERSHIP

- 7 elected members
- Spring annual elections
- **Spring 2026** – alternating elections of 2-3 members for 3-year terms



SERVANT LEADER TEAMS (FORMERLY "BOARDS")

- Team chairs and co-chairs appointed by Board of Directors
- Team member opportunities:



Spiritual Life



Finance



Facilities



Schools



**Cypress Mission
and Ministry**



TASK FORCES

Definition: a group
that comes together
for a specific
purpose/task.

- Could be *weekly* (count offerings, deliver flowers)
- Could be *annually* for an event (OktoBEARfest or Operation Christmas Child)
- Could be an *ongoing* ministry group



DATES & OPPORTUNITIES

- **June 8 Voter's Meeting:** Budget Approval and Board Elections
 - Nominations close May 25
 - Six current Board members willing to stand for re-election

Interested in serving on the Board of Directors? Contact any current Board member:

- Joey Cerulle
- Bob Lange
- Bob Petrillo
- Josette Utke
- Jeremy O'Conner
- John Holmquist

A Task Force can be formed by a staff member or congregation members who see a need, have a desire to serve and have a staff member or member of BoD for support.

Giving Proportionately **Luke 21:1-4**

CALLING ALL TECH SUPPORTERS!

Here's something you may not be thinking about: The broadcast and live-worship -aid tech equipment breaks down, goes obsolete, and needs upgrading. Whether you are an in-person-only congregant, an online-only worshipper, a sermon podcast listener-viewer, or a mix of all of them, you can help our in-person and online worship ministry continue to thrive through the gift of technology. You can give a one-time gift, or even choose to include a regular, recurring offering into the 'tech-giving fund'! Use the QR code to get to the online -giving site, or call Maralee in the church office for assistance with Tech-Giving! Thanks for being a Tech-Supporter!



MAJOR EARNINGS ARE JUST AROUND THE CORNER!

Get ready to earn up to 23% from 125+ brands perfect for spring gifting, everyday expenses, travel plans and more.

- April 26 - May 9: Mother's Day bonuses
 - 60+ brands, earnings up to 23%
 - Bonuses on all card types
- May 2 - 5: Raise Days
 - 60+ MORE brands, earnings up to 18%
 - Bonuses on eGift cards and reloaded gift cards only
 - Four days to shop instead of the usual two

Haven't started earning yet? Get started at raiserright.com/m/startearning today!

To learn more:
 Ruth Lopez
 BLS Scrip Coordinator
rlopez@bethanylutheran.org
 562-420-7783 ext. 58



RaiseRight.



WE GIVE HIM BUT HIS OWN

At Bethany we know that "our stuff is not our stuff!" All that we have, all that we are, is a gift from Him. We also know that giving is a spirit-given compulsion. For Jesus Christ, in whose likeness we are being transformed daily, is the ultimate giver. Your gifts fund ministry that give people Jesus. His words, His promises, His presence, His gifts, His comfort, His strength are given through the gifts you are now giving Him. We thank and honor you for these gifts, because they thank and honor Him! Questions? Contact Maralee Shaeffer at mshaefter@bethanylutheran.org.

THERE ARE MULTIPLE WAYS TO GIVE TO BETHANY INCLUDING:

Online, Text to Give, Online Bill-Pay, US Mail, Offering Box, **and now Apple Pay, Google Pay, Venmo, and PayPal!**



Community Connections **Acts 2:44**



Mom Co.

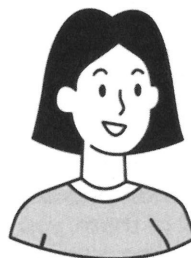
Date: second Tuesdays

Time: 8:30 - 9:30 am

Location: Youth Center

A time for moms to connect with one another, have a time of devotion, learn & grow, build one another up & snack on breakfast treats together.

Questions? Contact Alissa Brege at abrege@bethanylutheran.org.



2002 HONDA ODYSSEY

- **GOOD CONDITION**
- **LOW MILEAGE**
- **\$12,000 OBO**

INTERESTED? CONTACT MARYELLEN CRABTREE AT (714) 309-7190.

New **WOMEN'S BIBLE STUDY!**

Starting Sunday, April 27th • 10:45 am in Room 217



THE SCANDAL OF THE KINGDOM WORKBOOK

BASED ON THE BOOK BY
DALLAS WILLARD
WRITTEN BY JAN JOHNSON



The Scandal of the Kingdom Workbook: How the Parables of Jesus Revolutionize Life with God

A runaway son. A frantic search for a coin. A farmer paying for hired help. Jesus used ordinary situations like these to teach extraordinary truths about following Him. Come explore Jesus' parables with us:

- Hearing What Jesus Said: The truths that Jesus was revealing
- Thinking About What Jesus Said: How those truths apply to you
- Responding to What Jesus Said: What actions to take

Order WORKBOOK by Jan Johnson online and we will discuss the introduction the first week. For more info, please contact Mary Kay Esswein through the church office - 562-421-4711 ext. 12.

BETHANY LUTHERAN CHURCH & SCHOOL IS *Hiring!*

DIRECTOR OF FINANCE AND OPERATIONS



Bethany Lutheran Church and School is seeking qualified candidates for the position of Director of Finance and Operations. This position will oversee the financial and human resources responsibilities of our organization for both the church and the school, along with overseeing some of our operational functions. This is a full-time benefitted position with an anticipated start date in late Spring 2025.

A full job description is available here: <https://bit.ly/BethanyDPO>. If you are interested in this position please submit your name, email address, and a brief summary of your qualifications to jobs@bethanylutheran.org.

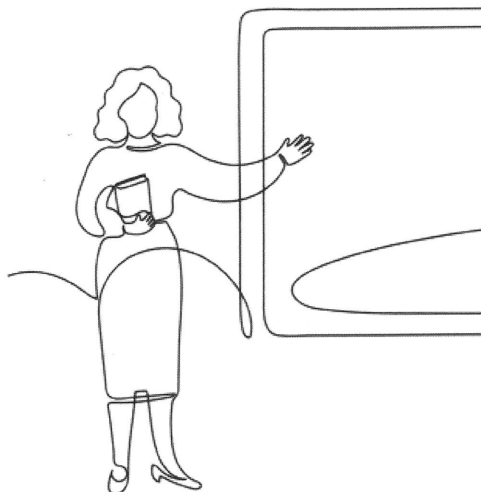
We are sad to lose our beloved Kindergarten teacher, Mrs. Blake, but we wish her God's blessings in Texas! Now we are praying and looking for Bethany's next Kindergarten teacher:

POSITION DESCRIPTION:

Teach full-day Kindergarten, providing a classroom environment that is Christ-centered, engaging and developmentally appropriate. Develop strong relationships with TK teachers and students/families to build a smooth transition from preschool to K-8 school.

Candidates must possess excellent communication and collaboration skills, the desire to work cooperatively with team-mates (including a full-day aide) and a whole-parish understanding of ministry. Teaching credential a must. A rostered teacher is preferred. **Contact: Mary Fink at mfink@bethanylutheran.org.**

KINDERGARTEN TEACHER





**JOIN OUR VBS TEAM IN AN ULTIMATE ALASKAN ADVENTURE
AS WE EXPLORE THE FAITHFUL FRIENDSHIP OF JESUS!**

Vacation Bible School is June 23-27, 2025

Volunteers for those entering 7th grade - Adults Needed!

IMPORTANT - The VBS Program runs 8:30AM to Noon June 23-27; but **we ask for volunteers to arrive by 8:00AM each day.** Coffee & treats will be available every morning.

VBS Staff Training -

- We have two dates for you to choose from for **In-Person Training Dates: Tuesday, May 20 from 5:30-6:30PM** and **Wednesday, May 28 from 5:30-6:30PM** in the Youth Room.
- **If you are 18 years or younger**, you need to make every effort to attend In-Person Training!
- If you are unable to make the In-Person Training, there will be an online training option for ALL roles.

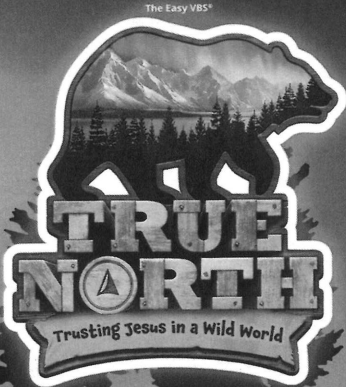
VBS WORKDAY & SET-UP - Mark your calendars for **Saturday, June 21 from 9:00AM to 1:00pm** to help decorate and set up for our VBS week! More hands make for lighter work. We could really use your help.

VBS Volunteer Staff Commissioning - Sunday, June 22 at each of the morning services on Bethany's campus. The commissioning will happen at the beginning of the service. Volunteers will be invited forward at whichever service they plan to attend.

Questions? Contact Kayleigh Lopez at klopez@bethanylutheran.org or 309-397-6583.

JOIN US FOR AN AMAZING WEEK!

BETHANY LUTHERAN CHURCH
4644 CLARK AVENUE
LONG BEACH, CA 90808



JUNE 23-27, 2025
8:30 A.M. - NOON

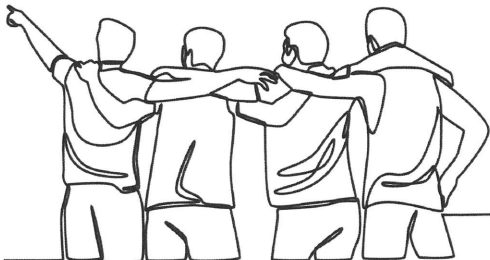
THIS FREE VBS IS FOR
AGES 3 YEARS OLD
AND POTTY-TRAINED -
ENTERING 6TH GRADE.



SAVE THE DATE FOR THE

Men's Retreat!

Bethany's annual Men's retreat will be held the weekend of **October 3-5** in our usual place, the Luther Glen Farm Retreat Center in Oak Glen. Get this in your calendars **NOW!** We are looking forward to a great time, as always!



Don't Forget Us

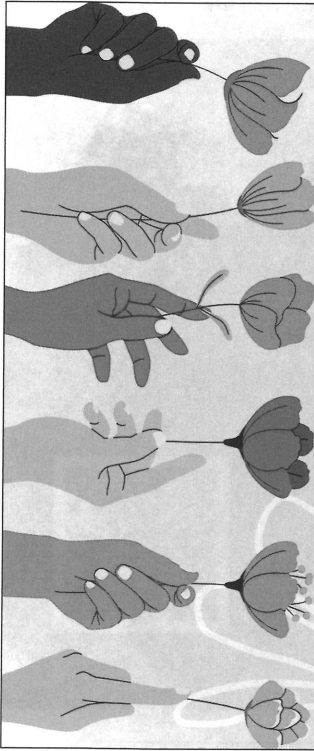
GAME DAY ONCE AGAIN

Tuesday May 6, 2025

Bethany Parish Lounge 11:30 to 1:30
food drinks

NEW GAME OR BRING
YOUR OWN FOR US TO TRY





NEW TITLE AND RETREAT LEADER!

“REST ASSURED”

A WOMEN'S RETREAT
WITH NEW RETREAT LEADER

Garah Galtzberg

Friday, June 6 - Saturday, June 7

at Bethany Lutheran Church

Event begins at 5 pm on Friday evening. Then join us for breakfast on Saturday morning as the women's retreat fun continues! We will wrap up at 5 pm on Saturday evening.

**RETREAT COST
IS NOW \$85.**

**CONSIDER JOINING THE
50 WOMEN WHO HAVE
ALREADY REGISTERED!**



*Registration
closes at
midnight on
May 16th.*

THE LUTHERAN HOUR *Updates!*

CHANGES TO THE LUTHERAN HOUR BROADCAST

The final broadcast of **The Lutheran Hour®** on KBRT 740 AM was April 27, 2025. To find other airings near you, check the broadcast guide at lhm.org/guide. The Lutheran Hour is available today in many other ways beyond traditional radio. From the American Forces Network, Sirius XM satellite radio, lutheran-hour.org, the Connected by LHM mobile app, Amazon Alexa, Spotify, iHeartRadio, YouTube, dialing in on your phone, and more, listeners can hear the weekly sermons whenever and wherever they are.

CHECK OUT OUR SELECTION OF PROJECT CONNECT BOOKLETS

Lutheran Hour Ministries' booklet ministry, **Project Connect**, is designed to provide down-to-earth insight about things people deal with every day—grief, stress, prayer, relationships—and more. You can share **Project Connect** booklets with friends and neighbors, and use them for your own encouragement and enlightenment. Bethany maintains a **Project Connect** booklet carousel in the narthex. Please visit the carousel, browse the booklets available, and take any that are of interest to you.

For more information about Lutheran Hour Ministries, visit lhm.org.

BETHANY *on the go!*

A 7-NIGHT ALASKAN CRUISE

DEPARTING JUNE 23, 2026

Bethany has had a rich heritage of traveling together to all parts of the globe through it's travel group. A final choice for the 2026 trip has been made!



Join us for 7- Night Cruise **from \$3,650**

COMPLIMENTARY SERVICES & AMENITIES

- Welcome bottle of champagne
- Butler Service in every suite and guest room
- 24-Hour in-suite dining
- Unlimited beverages* (alcohol and soft drinks)
- Specialty Dining at Umi Uma and Osteria d'Ovidio*
- Turndown service
- Shoeshine service
- Assistance with packing and unpacking
- Pillow menu
- Unlimited standard wifi
- And more

*Restrictions apply.

We're thrilled to invite you on a breathtaking journey through the untouched, majestic landscapes of Alaska aboard the luxurious Crystal Symphony. Set sail on June 23, 2026, and experience nature like never before, with Crystal's renowned all-inclusive amenities ensuring your voyage is nothing short of extraordinary.

We have secured group rates aboard this sailing averaging \$1000 off per person when compared to current pricing.

This isn't just a cruise, it's a call to find your wander in the captivating embrace of Alaska. Stay tuned during the booking process for details on our optional land extension to Denali National Park. Scan the QR for more info.



UPCOMING YOUTH GROUP DATES

Scan the QR code to learn more about our youth ministries and to see a full list of upcoming events!



QUESTIONS?

Children & Family Ministries:

Alissa Brege
562.421.4711 ext. 13
abrege@bethanylutheran.org

Youth & Young Adult Ministries:

Kayleigh Lopez
562.421.4711 ext. 18
klopez@bethanylutheran.org



HAVE YOU SIGNED UP FOR THE BETHANY BULLET?



The Bethany Bullet is a weekly capsule of worship highlights and big information that your brain may or may not have 'downloaded' from the prior Sunday. The purpose is to bolster you

In faith, build you up in the key Biblical themes shared the previous Sunday in worship, to bring to mind the important issues on Bethany's plate and to broaden your awareness of opportunities of service to your Lord, your church, and community.

DO YOU HAVE AN ARTICLE FOR THE CHIMES?

Please submit all articles by **Wednesday** to kloya@bethanylutheran.org to be printed the following Sunday's Chimes. *Please note: Articles may be edited and reformatted in order to fit within the space available and all submissions will be sent to a pastor for final approval. Thank you for your understanding.*

*Blessings,
Kasey Loya*



DO YOU HAVE A PRAYER REQUEST OR DESIRE INFORMATION ABOUT A MINISTRY, MEMBERSHIP, OR ONLINE GIVING?



WOULD YOU LIKE TO HEAR TODAY'S OR A PREVIOUS SERMON AGAIN?

You can hear them as podcasts at bethanylutheran.org



WANT TO SEE IT AGAIN?

Today's 8 am service will be live-streamed on our YouTube channel:

