

THE WEEKLY
CHIMES
BETHANY LUTHERAN CHURCH

4644 Clark Ave.
Long Beach, CA 90808
(562) 421-4711
bethanylutheran.org
Bethany.Long.Beach
@BethanyLutheran
LongBeach

TODAY'S FLOWERS ARE GIVEN

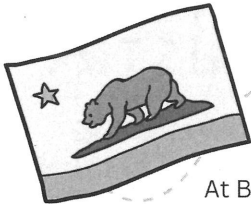
to the glory of God:

IN CELEBRATION OF 8 YEARS OF MARRIAGE
FOR RICK AND NICKY OLIVER

*May God bless your marriage
today and always!*

PLEASE PRAY FOR:

Julie Cole
Jim Coontz
Kevin Dart
David Gamble
Betty Greene
Lynda Kernahan
John Lightle
Phyllis Lee
Vanessa Lee
Marge Lorenz
Tom Mooney
Larry Neasel
Christy Pierce
Mike Pierce
Suzanne Reed
Kat Totten
Eno Uti



FAREWELL TO THE
Blake Family

At Bethany, and The Gathering before Bethany, the Lord has blessed us with the ministry partnership of Pastor Kyle and Kendell Blake. As the Lord has called them to a new ministry field in the Lone Star State we prepare to say farewell, celebrate the time we've shared and pray God's speed upon them in their new field. Sunday, June 1st will be Pastor Kyle's last Sunday and we will recognize the Blakes congregationally. Throughout the month of May a box will remain in the narthex where we can individually leave them a card of thanks and blessing in recognition that at Bethany He blesses us, and He has certainly done that through their presence.



Worshiping Faithfully Hebrews 10:25



SUNDAY MORNING WORSHIP AND BIBLE STUDY SCHEDULE

SERVICE SCHEDULE:

8 am • 9:30 am • 11 am

COMMUNION SCHEDULE:

1st Sunday: all services

2nd Sunday: 9:30 am only

3rd Sunday: all services

4th Sunday: 9:30 am only

BIBLE STUDY SCHEDULE:

"Lessons of the Day" will be led by a member of the ministry staff at 9:30AM in the Multi-Purpose Room (# 215) located at the top of the south side staircase in Freedom Square.

Women's and Men's studies will be led by congregational members at 10:45AM. Location varies. Please contact the church office for more information.



SUNDAY MORNING CHILDREN'S MINISTRY

NURSERY CARE:

We love kids here at Bethany! **We offer nursery care during both our 8:00 and 9:30AM services.** Infants through preschool kids love connecting with friends & enjoy playing with the toys while listening to the service playing. We have a fantastic team that are highly qualified caretakers.

Drop off starts at 7:50AM for the 8:00AM service and at 9:20AM for the 9:30AM service. Please make your way across Friendship Square (the courtyard outside) to sign your little one in.

UNDER GRACE, UNDER 8:

Children ages two (and who are potty-trained) through second grade are invited to join us for songs, crafts, stories that help them to better understand Jesus abundant love for them and the grand adventures of the Bible!

Under Grace, Under 8 normally happens during our 9:30AM worship service. Kids will be invited from Children's Message to join in the fun and parents can pick up their kids just following the service at the Parish Lounge.

Questions? Contact Alissa Brege - Minister to Children & Families: 562-421-4711, ext. 13 or abrege@bethanylutheran.org



BETHANY CYPRESS CAMPUS (HOLY CROSS)

Our Cypress campus is making great progress inside the building. Internal framing for offices, workspaces, chancel and balcony is complete. Plumbing and electrical lines are nearing completion and concrete is soon to be poured. Stained glass panels for internal room divider is in design phase, and chancel design is nearing completion. Wiring for phone lines, internet and security is underway.

Stay tuned for more updates!

TO SEE PICTURES
OF THE CAMPUS,
SCAN ME!



Serving Passionately Ephesians 2:10



YOUTH VOLUNTEER Opportunities!

ACOLYTE AND CRUCIFER VOLUNTEER OPPORTUNITY!

We are once again interested in knowing which youth wish to acolyte for Sunday worship services (8 & 9:30 am)! Training is available to first-time acolytes. Please prayerfully consider this service opportunity and sign up on the google doc.

Questions? Please contact Karl Fink at
kfink@bethanylutheran.org.

To volunteer: **bit.ly/acolyte-and-crucifer**

SUNDAY COFFEE & DONUT VOLUNTEERS NEEDED!

OPEN TO YOUTH IN GRADES 8-12!

This is a great way to interact with church members, hang out with other youth, and earn funds in your Youth Ministry Account to be used towards any Youth Ministry event.

Questions? Please contact Aimee Coleman at
acoleman@bethanylutheran.org.

To volunteer: **bit.ly/coffee-and-donuts**



Bethany Lutheran Church

LEAD BY SERVING



Gathered



Connected



Sent



FOUNDATION

New constitution
and by-laws
approved by Voters.



BOARD OF DIRECTORS: ELECTED LEADERSHIP

- 7 elected members
- Spring annual elections
- **Spring 2026** – alternating elections of 2-3 members for 3-year terms



SERVANT LEADER TEAMS (FORMERLY "BOARDS")

- Team chairs and co-chairs appointed by Board of Directors
- Team member opportunities:



Spiritual Life



Finance



Facilities



Schools



**Cypress Mission
and Ministry**



TASK FORCES

Definition: a group
that comes together
for a specific
purpose/task.

- Could be *weekly* (count offerings, deliver flowers)
- Could be *annually* for an event (OktoBEARfest or Operation Christmas Child)
- Could be an *ongoing* ministry group



DATES & OPPORTUNITIES

- **June 8 Voter's Meeting:** Budget Approval and Board Elections
 - Nominations close May 25
 - Six current Board members willing to stand for re-election

Interested in serving on the Board of Directors? Contact any current Board member:

- Joey Cerulle
- Bob Lange
- Bob Petrillo
- Josette Utke
- Jeremy O'Conner
- John Holmquist

A Task Force can be formed by a staff member or congregation members who see a need, have a desire to serve and have a staff member or member of BoD for support.



SUNDAY MORNING NURSERY CHILDCARE POSITION OPENING

Do you love kids and love Jesus? We may have just the position for you! We are seeking a childcare provider to serve the youngest of our Bethany family during our 8 & 9:30 am Sunday morning worship services.

Our nursery team serves in groups of two on Sunday mornings, welcoming our infants and preschoolers to the nursery and engages the kids in age-appropriate play & stories, sharing Jesus, while the service is livestreamed for everyone in the nursery to worship.

The hours are 7:45 - 10:45 am, approximately two Sunday mornings a month. Candidates must be 18 years old and satisfactorily complete the employment processes. **To apply or for additional information, please contact Alissa Brege at abrege@bethanylutheran.org.**

Giving Proportionately Luke 21:1-4

CALLING ALL TECH SUPPORTERS!

Here's something you may not be thinking about: The broadcast and live-worship -aid tech equipment breaks down, goes obsolete, and needs upgrading. Whether you are an in-person-only congregant, an online-only worshipper, a sermon podcast listener-viewer, or a mix of all of them, you can help our in-person and online worship ministry continue to thrive through the gift of technology. You can give a one-time gift, or even choose to include a regular, recurring offering into the 'tech-giving fund'! Use the QR code to get to the online -giving site, or call Marelly in the church office for assistance with Tech-Giving! Thanks for being a Tech-Supporter!



THE SUMMER OF RAISERIGHT!

Summer is just around the corner. Make the most of it with RaiseRight! Enjoy all of your summer activities and keep earning a rebate for next school year - use gift cards to pay for all of your summer fun! There are so many eGift card options you can purchase and use right from your phone on the RaiseRight app making it easier than ever to incorporate gift cards into your purchasing routine.

Rebates aren't just for tuition - you can support Student Success, music, youth, or general ministry!

To learn more:
Ruth Lopez
BLS Scrip Coordinator
rlopez@bethanylutheran.org
562-420-7783 ext. 58



RaiseRight



WE GIVE HIM BUT HIS OWN

At Bethany we know that “our stuff is not our stuff!” All that we have, all that we are, is a gift from Him. We also know that giving is a spirit-given compulsion. For Jesus Christ, in whose likeness we are being transformed daily, is the ultimate giver. Your gifts fund ministry that give people Jesus. His words, His promises, His presence, His gifts, His comfort, His strength are given through the gifts you are now giving Him. We thank and honor you for these gifts, because they thank and honor Him!

Questions? Contact Maraley Shaeffer at mshaeffer@bethanylutheran.org.

THERE ARE MULTIPLE WAYS TO GIVE TO BETHANY INCLUDING:

Online, Text to Give, Online Bill-Pay, US Mail, Offering Box, **and now Apple Pay, Google Pay, Venmo, and PayPal!**



DONATE TO BETHANY'S ALTAR FLOWER FUND!

Flowers are used to decorate the altar every Sunday, for special seasons such as Christmas and Easter, as well as other important dates during the year. You are able to make two types of donations to the Altar Flower Fund: a general donation and a special request with recognition.



- **A SPECIAL REQUEST WITH RECOGNITION*** is a special type of Altar Flower donation. This request will be printed in the bulletin. For example, it could be given in memory of a person who has gone before us, for a wedding anniversary, baptismal birthday or a birthday celebration, etc. **This recognition has a suggested donation of \$75.**
- **A GENERAL DONATION TO THE ALTAR FLOWER FUND** enables Bethany to have flowers in worship and for our shut-in and hospitalized members to receive flowers from our flower ministry team, even when no one has ordered flowers for Sunday. **This General Donation is for any amount you wish .**

*If you are making a **Special Request with Recognition**, please use this form to let us know of your donation **for a specific Sunday date** and what the significance of that donation is towards. **IMPORTANT:** Please complete this form at least **2 weeks prior** to that date, so that information regarding your donation can be printed in the Sunday bulletin for the date requested.



Community Connections: Acts 2:44

PLEASE JOIN US IN WELCOMING

We're thrilled to welcome Madison Ruiz to Bethany Lutheran as our new Kindergarten teacher! Mrs. Ruiz brings valuable teaching experience, creativity, and a heart for young learners to this role. She is a graduate of Concordia University-Irvine and, along with her husband Austin, is a member of Bethany Lutheran Church. Mrs. Ruiz joins us from Christ Lutheran School in Costa Mesa, where she taught Kindergarten and held leadership roles on staff. Her passion for education extends beyond the classroom—she has also served as an *Under Grace - Under Eight* leader and a Vacation Bible School team leader here at Bethany, sharing her faith and love of learning with children of all ages. Mrs. Ruiz is looking forward to partnering with families and the Bethany team to help each child grow academically, socially, and spiritually. Please join us in giving her a warm welcome to our school family!

Madison Ruiz!



BETHANY LUTHERAN CHURCH IS *Hiring!*

DIRECTOR OF FINANCE AND OPERATIONS



Bethany Lutheran Church and School is seeking qualified candidates for the position of Director of Finance and Operations. This position will oversee the financial and human resources responsibilities of our organization for both the church and the school, along with overseeing some of our operational functions. This is a full-time benefitted position with an anticipated start date in late Spring 2025.

A full job description is available here:

<https://bit.ly/BethanyDPO>. If you are interested in this position please submit your name, email address, and a brief summary of your qualifications to **jobs@bethanylutheran.org**.



JOIN OUR VBS TEAM IN AN ULTIMATE ALASKAN ADVENTURE AS WE EXPLORE THE FAITHFUL FRIENDSHIP OF JESUS!

Vacation Bible School is June 23-27, 2025

Volunteers for those entering 7th grade - Adults Needed!

IMPORTANT - The VBS Program runs 8:30AM to Noon June 23-27; but **we ask for volunteers to arrive by 8:00AM each day.** Coffee & treats will be available every morning.

VBS Staff Training -

- We have two dates for you to choose from for **In-Person Training Dates: Tuesday, May 20 from 5:30-6:30PM** and **Wednesday, May 28 from 5:30-6:30PM** in the Youth Room.
- **If you are 18 years or younger**, you need to make every effort to attend In-Person Training!
- If you are unable to make the In-Person Training, there will be an online training option for ALL roles.

VBS WORKDAY & SET-UP - Mark your calendars for **Saturday, June 21 from 9:00AM to 1:00pm** to help decorate and set up for our VBS week! More hands make for lighter work. We could really use your help.

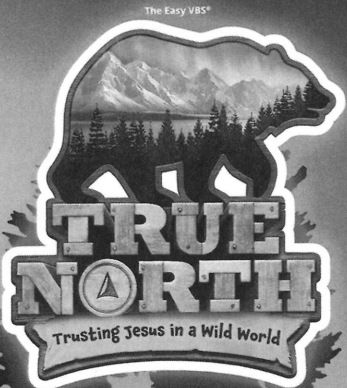
VBS Volunteer Staff Commissioning - Sunday, June 22 at each of the morning services on Bethany's campus. The commissioning will happen at the beginning of the service. Volunteers will be invited forward at whichever service they plan to attend.

Questions? Contact Kayleigh Lopez at klopez@bethanylutheran.org or 309-397-6583.

JOIN US FOR AN AMAZING WEEK!

BETHANY LUTHERAN CHURCH
4644 CLARK AVENUE
LONG BEACH, CA 90808

JUNE 23-27, 2025
8:30 A.M. - NOON



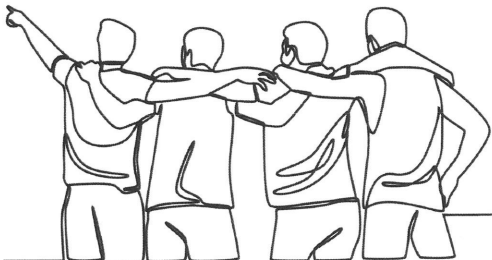
THIS FREE VBS IS FOR
AGES 3 YEARS OLD
AND POTTY-TRAINED -
ENTERING 6TH GRADE.



SAVE THE DATE FOR THE

Men's Retreat!

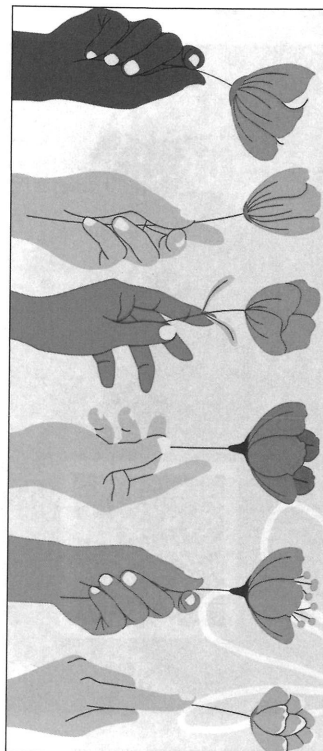
Bethany's annual Men's retreat will be held the weekend of **October 3-5** in our usual place, the Luther Glen Farm Retreat Center in Oak Glen. Get this in your calendars **NOW!** We are looking forward to a great time, as always!



2002 HONDA ODYSSEY

- GOOD CONDITION
- LOW MILEAGE
- \$12,000 OBO

INTERESTED? CONTACT MARYELLEN
CRABTREE AT (714) 309-7190.



NEW TITLE AND RETREAT LEADER!

“REST ASSURED”

A WOMEN'S RETREAT
WITH NEW RETREAT LEADER

Garah Galsberg

Friday, June 6 - Saturday, June 7

at Bethany Lutheran Church

Event begins at 5 pm on Friday evening. Then join us for breakfast on Saturday morning as the women's retreat fun continues! We will wrap up at 5 pm on Saturday evening.

**RETREAT COST
IS NOW \$85.**

**CONSIDER JOINING THE
50 WOMEN WHO HAVE
ALREADY REGISTERED!**



*Registration
closes at
midnight on
May 16th.*

THE LUTHERAN HOUR

Updates!

CHANGES TO THE LUTHERAN HOUR BROADCAST

The final broadcast of **The Lutheran Hour®** on KBRT 740 AM was April 27, 2025. To find other airings near you, check the broadcast guide at lhm.org/guide. The Lutheran Hour is available today in many other ways beyond traditional radio. From the American Forces Network, Sirius XM satellite radio, lutheran-hour.org, the Connected by LHM mobile app, Amazon Alexa, Spotify, iHeartRadio, YouTube, dialing in on your phone, and more, listeners can hear the weekly sermons whenever and wherever they are.

CHECK OUT OUR SELECTION OF PROJECT CONNECT BOOKLETS

Lutheran Hour Ministries' booklet ministry, **Project Connect**, is designed to provide down-to-earth insight about things people deal with every day—grief, stress, prayer, relationships—and more. You can share **Project Connect** booklets with friends and neighbors, and use them for your own encouragement and enlightenment. Bethany maintains a **Project Connect** booklet carousel in the narthex. Please visit the carousel, browse the booklets available, and take any that are of interest to you.

For more information about Lutheran Hour Ministries, visit lhm.org.



Gathered



Connected



Sent

BETHANY *on the go!*

A 7-NIGHT ALASKAN CRUISE

DEPARTING JUNE 23, 2026

Bethany has had a rich heritage of traveling together to all parts of the globe through it's travel group. A final choice for the 2026 trip has been made!



Join us for 7- Night Cruise **from \$3,650**

COMPLIMENTARY SERVICES & AMENITIES

- Welcome bottle of champagne
- Butler Service in every suite and guest room
- 24-Hour in-suite dining
- Unlimited beverages* (alcohol and soft drinks)
- Specialty Dining at Umi Uma and Osteria d'Ovidio*
- Turndown service
- Shoeshine service
- Assistance with packing and unpacking
- Pillow menu
- Unlimited standard wifi
- And more

*Restrictions apply.

We're thrilled to invite you on a breathtaking journey through the untouched, majestic landscapes of Alaska aboard the luxurious Crystal Symphony. Set sail on June 23, 2026, and experience nature like never before, with Crystal's renowned all-inclusive amenities ensuring your voyage is nothing short of extraordinary.

We have secured group rates aboard this sailing averaging \$1000 off per person when compared to current pricing.

This isn't just a cruise, it's a call to find your wander in the captivating embrace of Alaska. Stay tuned during the booking process for details on our optional land extension to Denali National Park. Scan the QR for more info.



UPCOMING YOUTH GROUP DATES

Scan the QR code to learn more about our youth ministries and to see a full list of upcoming events!



QUESTIONS?

Children & Family Ministries:

Alissa Brege
562.421.4711 ext. 13
abrege@bethanylutheran.org

Youth & Young Adult Ministries:

Kayleigh Lopez
562.421.4711 ext. 18
klopez@bethanylutheran.org



HAVE YOU SIGNED UP FOR THE BETHANY BULLET?



The Bethany Bullet is a weekly capsule of worship highlights and big information that your brain may or may not have 'downloaded' from the prior Sunday. The purpose is to bolster you

In faith, build you up in the key Biblical themes shared the previous Sunday in worship, to bring to mind the important issues on Bethany's plate and to broaden your awareness of opportunities of service to your Lord, your church, and community.

DO YOU HAVE AN ARTICLE FOR THE CHIMES?

Please submit all articles by **Wednesday** to kloya@bethanylutheran.org to be printed the following Sunday's Chimes. *Please note: Articles may be edited and reformatted in order to fit within the space available and all submissions will be sent to a pastor for final approval. Thank you for your understanding.*

*Blessings,
Kasey Loya*



DO YOU HAVE A PRAYER REQUEST OR DESIRE INFORMATION ABOUT A MINISTRY, MEMBERSHIP, OR ONLINE GIVING?



WOULD YOU LIKE TO HEAR TODAY'S OR A PREVIOUS SERMON AGAIN?

You can hear them as podcasts at bethanylutheran.org



WANT TO SEE IT AGAIN?

Today's 8 am service will be live-streamed on our YouTube channel:

