




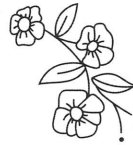


THE WEEKLY
CHIMES
BETHANY LUTHERAN CHURCH

 4644 Clark Ave.
Long Beach, CA 90808
 (562) 421-4711
 bethanylutheran.org
 Bethany.Long.Beach
 @BethanyLutheran
LongBeach

TODAY'S FLOWERS ARE GIVEN

to the glory of God:



IN CELEBRATION OF MORGYN BACA'S 2ND
BIRTHDAY ON JUNE 2ND BY HER GRANDPA
AND GRAMMY

*Happy Birthday to our
Beautiful Granddaughter!*

IN CELEBRATION OF 49 YEARS OF MARRIAGE
FOR MIKE & MARILYN RIORDAN ON JUNE 4TH

*May God bless your marriage
today and always!*



PLEASE PRAY FOR:

Julie Cole
Kevin Dart
David Gamble
Betty Greene
Lynda Kernohan
John Lightle
Phyllis Lee
Tom Mooney
Larry Neasel
Christy Pierce
Mike Pierce
Suzanne Reed
Kat Totten
Eno Uti



PASTORAL CALL ANNOUNCEMENT



Nominations for the position of Associate Pastor of Connect Ministry transitioning to Senior Pastor are officially open now through July 31st. Nomination forms can be found in the church office.



INTRODUCING: THE BETHANY BROADCAST

Whether you pick up a copy of Chimes upon leaving worship or read the Bullet when it arrives in your inbox during the week, you are reading one of the primary means of information delivery at Bethany. While they differ in some ways and are not identical across the board, if you've read both you know that they have the same core congregational announcements and information.

Starting in July therefore, our two primary congregational means of communication, while retaining their uniqueness, will share a name:

The Bethany Broadcast: *print edition*

The Bethany Broadcast: *electronic edition*

Worshiping Faithfully Hebrews 10:25



SUNDAY MORNING WORSHIP AND BIBLE STUDY SCHEDULE

SERVICE SCHEDULE:

8 am • 9:30 am • 11 am

COMMUNION SCHEDULE:

1st Sunday: all services

2nd Sunday: 9:30 am only

3rd Sunday: all services

4th Sunday: 9:30 am only

BIBLE STUDY SCHEDULE:

"Lessons of the Day" will be taking a break for the summer. Look for it returning sometime in the Fall.

Women's and Men's studies will be led by congregational members at 10:45AM. Location varies. Please contact the church office for more information.

BETHANY CYPRESS CAMPUS (HOLY CROSS)

Exciting new updates: The chancel has been poured, altar, font, lectern are in the works. Patio cover is scheduled for installation this week and AV begins the end of June.



VOTER'S MEETING TODAY!



We will have our Spring Voters Meeting TODAY, Sunday, June 8 at 12:30 pm in the choir room. Below are the three motions from the Board of Directors that will be presented at the meeting. See next page for an overview of the proposed budget and copies of the fully detailed proposed budget are available in the church office.

MOTIONS

1. Move to approve the proposed 2025-2026 budget.
2. Move to elect the following people to the Board of Directors for the specified terms beginning July 1, 2025.
 - 3 year terms - Joey Cerulle, Bob Lange
 - 2 year terms - Josette Utke, Kellie Plater, Jeremy O'Conner
 - 1 year terms - John Holmquist, Bob Petrillo
3. Move to extend a Call to John Alwood as Asst. Pastor deployed as Director of Coastal Missions.



CONGREGATIONAL DATA

WORSHIP ATTENDANCE:

Average weekly worship attendance Easter Season 2024: 430 per Sunday
Average weekly worship attendance Easter Season 2025: 460 per Sunday
Average weekly worship attendance May 2024: 396 per Sunday
Average weekly worship attendance May 2025: 470 per Sunday

BUDGET:

Year to date (April '25) actual offerings: \$1,179,533.49
 - Same period last year: \$1,047,899.76
Year to date (April '25) actual congregational income: \$3,521,866.16
 - Same period last year: \$3,200,290.5
Year to date (April '25) actual expenses: \$3,492,912.04
 - Same period last year: \$3,202,201.53
Year to date (April '25) actual income vs. expense: \$28,954.12
 - Same period last year: (\$1,911.01)

Bethany Lutheran Church

Proposed Fiscal Year 25/26 Budget

	BUDGET Fiscal Year 24/25	BUDGET Fiscal Year 25/26
Income		
Offering Income		
400 Offerings-Envelopes	1,424,280.00	1,554,670.00
401 Offerings-Loose Plate	13,000.00	13,000.00
Offering Income Totals:	<u>1,437,280.00</u>	<u>1,567,670.00</u>
Tuitions & Fees		
402 Tuition/Fees K-8 School	1,507,422.00	1,559,617.00
403 Tuition/Fees-Pre-School	824,250.00	840,735.00
404 Tuition/Fees EDC/Summer Camp	152,500.00	159,375.00
405 Tuition/Fees Student Success Program	24,500.00	25,000.00
Tuitions & Fees Totals:	<u>2,508,672.00</u>	<u>2,584,727.00</u>
Misc. Income		
409 Class Room Rental	3,125.00	4,000.00
407 Miscellaneous	-	
410 Offering Special/Designated	51,348.00	45,626.50
411 Misc Income - Salary Inc - ERC+Other 2023/24	61,240.00	
Misc Income - Salary Inc - ERC+Other 2024/25	220,610.00	
Misc Income - Salary Inc - Fund 909, GF Allocation		177,220.00
440 School Support for SSP	(60,000.00)	(60,000.00)
441 SSP Support from School	60,000.00	60,000.00
442 Transfer from/to SSP Fund #935	62,240.00	80,170.00
445 Church Support of School / #5518	45,000.00	45,000.00
Misc. Income Totals:	<u>443,563.00</u>	<u>352,016.50</u>

3.5% inc + Bethany Cypress

Income Totals:		<u><u>4,389,515.00</u></u>	<u><u>4,504,413.50</u></u>
Expense			
Admin/Finance Totals:		1,391,415.00	1,523,675.00
Worship Totals:		8,990.00	11,940.00
Music Ministry		40,300.00	51,765.00
Facilities Totals:		142,650.00	145,900.00
School Totals:		1,576,875.00	1,604,124.00
Pre School Totals:		883,510.00	831,810.00
Ext.Day Care/Summer Camp Totals:		162,350.00	138,499.50
SSP Totals:		150,250.00	165,170.00
Youth Totals:		30,890.00	29,245.00
Spiritual Life Totals:		1,235.00	1,235.00
Community Connections Totals:		1,050.00	1,050.00
Expense Totals		<u><u>4,389,515.00</u></u>	<u><u>4,504,413.50</u></u>
Income - Expense		<u><u>-</u></u>	<u><u>-</u></u>

Notes:

- Bethany Cypress Update: Funds spent on ministry, facility and staffing will not exceed 10% of the funds set up for Site Ministry Fund and Staffing Fund.
- Update Website (Church & Schools) \$15,000
 - 24/25 Use Growth Fund/or other fund sources
 - 25/26 Use Growth Fund/or other fund sources

Budget Assumptions:

- 8% inc CHP effective 1/1/2026
- Continued support for Salary Increases in 25/26

Serving Passionately Ephesians 2:10

COMMUNION VOLUNTEERS NEEDED



The church office is looking for a few volunteers to assist with communion prep on the first weekend of each month. The position consists of the set-up and filling of communion cups on Saturday and/or clean-up after services on Sunday.

If you would like to be part of this ministry (or hear more about it), please contact Kasey in the church office at 562-421-4711 (ext. 12) or kloya@bethanylutheran.org.



Updates

FROM OUR LCMS MISSIONARIES

NEWS FROM THE ODEMBA FAMILY SERVING IN KENYA

In April, I had the opportunity to attend our Project 24 Catechetical Club Competition. It was a special occasion, as our newest site hosted the event for the very first time. Students from the other sites not only enjoyed reconnecting with friends, but also had the chance to learn about a different Kenyan tribe unfamiliar to most of them. Along the way, they were delighted to see a variety of African wildlife, which added to the excitement of the trip. The competition itself was a success. The children performed a range of songs, including hymns, and recited sections of the Small Catechism. One of the highlights was their dramatization of the Fall of Man, where they creatively acted out the story of Adam and Eve's fall into sin. The drama segment is always a favorite, showcasing the students' imagination and use of props. We are truly grateful for this meaningful event and the opportunity it gave the children to explore and appreciate different parts of Kenya.

Since the birth of my daughter Rael, I have been a member of the T21 Family Support Organization—a network of mothers across Kenya who support one another in raising children with Down syndrome. What began as a small group of ten has now grown to over 400 members. We share experiences, resources, and milestones in our children's lives. Twice a year, we meet in person to commemorate World Down Syndrome Day and Down Syndrome Awareness Month. These gatherings offer a meaningful opportunity to connect, share our stories, and build a sense of community. I am honored to serve on the organization's leadership committee. This past week, we met to develop strategic plans for the year ahead, with a focus on raising awareness and reducing the stigma surrounding Down syndrome. We left the meeting encouraged and committed to making a positive impact in our communities.

In His Grip - Britt, Micah, Rael, and Silas

Giving Proportionately: Luke 21:1-4

WE GIVE HIM BUT HIS OWN

At Bethany we know that “our stuff is not our stuff!” All that we have, all that we are, is a gift from Him. We also know that giving is a spirit-given compulsion. For Jesus Christ, in whose likeness we are being transformed daily, is the ultimate giver. Your gifts fund ministry that give people Jesus. His words, His promises, His presence, His gifts, His comfort, His strength are given through the gifts you are now giving Him. We thank and honor you for these gifts, because they thank and honor Him! **Questions?** Contact Maraley Shaeffer at mshaefter@bethanylutheran.org.

THERE ARE MULTIPLE WAYS TO GIVE TO BETHANY INCLUDING:

Online, Text to Give, Online Bill-Pay, US Mail, Offering Box, **and now Apple Pay, Google Pay, Venmo, and PayPal!**



MAKE THE MOST OF SUMMER WITH RAISERIGHT!

Enjoy all of your summer activities and keep earning a rebate for next school year - use gift cards to pay for all of your summer fun! There are so many eGift card options you can purchase and use right from your phone on the RaiseRight app making it easier than ever to incorporate gift cards into your purchasing routine. Don't forget the newer options like shopping online through RaiseRight and earn 5% on local dining. Check the RaiseRight website for details or give me a call! *Remember - Rebates are not just for tuition - your rebate can go towards Student Success, youth ministry, music, and general ministry!*

FOR FATHER'S DAY: 100+ BONUSES ON BRANDS FOR DAD

Whether you're shopping for a Father's Day gift or thinking of ways to spend quality time together, earn extra with limited-time bonuses up to 23%. Shop sporting goods, restaurants, keepsake gifts, and more brands to show Dad you care. (June 1 -13)

TO LEARN MORE ABOUT RAISERIGHT:

Ruth Lopez
BLS Scrip Coordinator
rlopez@bethanylutheran.org
562-420-7783 ext. 58



RaiseRight.



Community Connections **Acts 2:44**

BETHANY LUTHERAN CHURCH IS *Hiring!*

DIRECTOR OF FINANCE AND OPERATIONS



Bethany Lutheran Church and School is seeking qualified candidates for the position of Director of Finance and Operations. This position will oversee the financial and human resources responsibilities of our organization for both the church and the school, along with overseeing some of our operational functions. This is a full-time benefitted position with an anticipated start date in late Spring 2025.

A full job description is available here:

<https://bit.ly/BethanyDPO>. If you are interested in this position please submit your name, email address, and a brief summary of your qualifications to **jobs@bethanylutheran.org**.

SAVE THE DATE!

BETHANY LUTHERAN FAMILY MINISTRY
KNOTT'S BERRY FARM
meet-ups!



SUNDAY, AUGUST 17

TWO GATHERING TIMES:

12:30 - 1:30 pm

5:30 - 6:30 pm

We will meet for lunch and/or dinner breaks and then split off in groups of people who want to go on similar rides.

More info on tickets and meet-up locations to come. Questions? Contact Alissa at abrege@bethanylutheran.org.

CREATIVE CRAFTER'S *retreat!*

JULY 18 - 19

If you are a sewer, quilter, knitter, cross-stitcher, crocheter, scrapbooker, jeweler, painter, woodworker, or all-around crafter and you would love to have some uninterrupted time to finish a project or start something new...this is for you!

We will gather in the Parish Lounge of Friday and craft the day away starting at 10 am. Stay as long as you want but the lights will be on until 10 pm. We will return on Saturday morning from 8 am - 6 pm.

RSVP : Cindy Morlok

562-972-2747

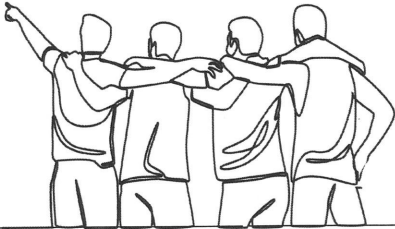
cindylula@twc.com

Anita Armbrust

310-259-4766

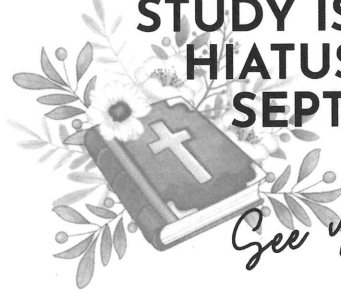
bigdogredbear@yahoo.com

MEN'S RETREAT *Coming!*



A men's retreat is being planned for the weekend of October 3 - 5 at Luther Glen Retreat Center in Oak Glen. This is a wonderful facility that we have used before. The cost for this is \$275 which includes 2 nights and 5 meals. Bedding and towels are provided for our stay. Retreat starts with dinner on Friday and concludes with Worship on Sunday morning. Theme and program being planned. Plenty of time for fellowship. Should you only be able to join us for the day Saturday, cost is \$146 for the full day and 3 meals. More information to come in the following weeks. Any questions please contact Karl Fink using his email kfink@bethanylutheran.org or call his office at 562.421.4711. ext 19.

WOMEN'S THURSDAY MORNING BIBLE STUDY IS ON HIATUS UNTIL SEPTEMBER.



See you then!



NEW BETHANY CAMPING GROUP!

Are you an outdoor enthusiast looking for a group of friendly Lutherans to go camping with? Perfect! We are interested in putting together a Bethany camping group and if you would like to hear more and join in on the fun, please contact Phil Lopez or the church office. The first scheduled camping trip would be Bonelli RV Park in San Dimas - August 1-3, 2025.

LUYBEN DILDAY DINE & LEARN EVENT

Luyben Dilday Mortuary is hosting a complimentary dinner and informative discussion about funeral planning, cremation, veteran benefits, and more!



WHEN Thursday, June 26th at 6pm
WHERE Black Angus Steakhouse
 5000 Candlewood St. Lakewood
RSVP (562) 362-3468
 or scan the QR code



Bethany Lutheran Family Ministries

Beach Day

Sunday, July 27, 2025
12:00, Noon at Seal Beach

Bring a picnic lunch and
your favorite sand & ocean toys.

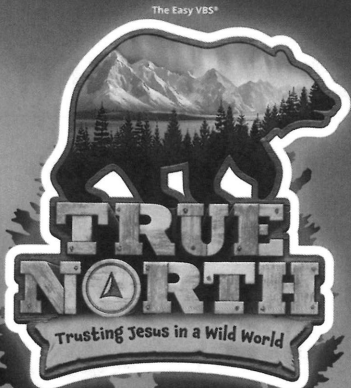
We will meet on the sand,
just north of the pier.

Questions? Contact Alissa @ albrege@bethanylutheran.org

JOIN US FOR AN AMAZING WEEK!

BETHANY LUTHERAN CHURCH
4644 CLARK AVENUE
LONG BEACH, CA 90808

JUNE 23-27, 2025
8:30 A.M. - NOON

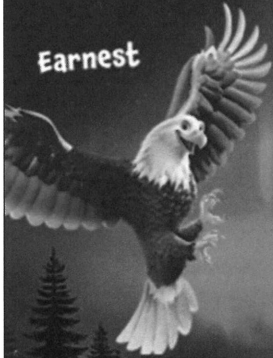


THIS FREE VBS IS FOR
AGES 3 YEARS OLD
AND POTTY-TRAINED -
ENTERING 6TH GRADE.





Earnest



Volunteers

WE NEED YOUR HELP!

**VBS VOLUNTEER REGISTRATION
IS NOW OPEN!**



HELP US POINT KIDS TO TRUE NORTH!

Vacation Bible School is almost here, and we're charting a course for adventure with **True North VBS, running June 23–27!** To make this an unforgettable week full of faith, fun, and discovery, we need your help stocking up on supplies. From snacks to crafts to decorations that fit our northern adventure theme, every donation makes a difference.

**Please bring all donations to the Youth Office
by June 13.**

Thank you for your generosity!

Check out our Amazon Wish List:

<https://bit.ly/Amazonvbs25>

Or scan the QR code to view and donate easily!



SCAN ME

GOT A CHRISTMAS TREE WE CAN BORROW?

As part of our staging for the “True North” theme, we’re looking to borrow artificial Christmas trees to help transform our space into a northern wilderness! If you’re willing to lend us a tree, please label it clearly with your **LAST NAME**.

Don’t worry—children will not be touching the trees, and they’ll be returned to you by the second Sunday after VBS ends.

Thank you for helping us create a meaningful and memorable VBS experience!

UPCOMING YOUTH GROUP

DATES

Scan the QR code to learn more about our youth ministries and to see a full list of upcoming events!



QUESTIONS?

Children & Family Ministries:

Alissa Brege
562.421.4711 ext. 13
abrege@bethanylutheran.org

Youth & Young Adult Ministries:

Kayleigh Lopez
562.421.4711 ext. 18
klopez@bethanylutheran.org



HAVE YOU SIGNED UP FOR THE BETHANY BULLET?



The Bethany Bullet is a weekly capsule of worship highlights and big information that your brain may or may not have 'downloaded' from the prior Sunday. The purpose is to bolster you

In faith, build you up in the key Biblical themes shared the previous Sunday in worship, to bring to mind the important issues on Bethany's plate and to broaden your awareness of opportunities of service to your Lord, your church, and community.

DO YOU HAVE AN ARTICLE FOR THE CHIMES?

Please submit all articles by **Wednesday** to kloya@bethanylutheran.org to be printed the following Sunday's Chimes. *Please note: Articles may be edited and reformatted in order to fit within the space available and all submissions will be sent to a pastor for final approval. Thank you for your understanding.*

*Blessings,
Kasey Loya*



DO YOU HAVE A PRAYER REQUEST OR DESIRE INFORMATION ABOUT A MINISTRY, MEMBERSHIP, OR ONLINE GIVING?



WOULD YOU LIKE TO HEAR TODAY'S OR A PREVIOUS SERMON AGAIN?

You can hear them as podcasts at
bethanylutheran.org



WANT TO SEE IT AGAIN?

Today's 8 am service will be live-streamed on our YouTube channel:

