

THE WEEKLY
CHIMES
BETHANY LUTHERAN CHURCH

4644 Clark Ave.
Long Beach, CA 90808
(562) 421-4711
bethanylutheran.org
Bethany.Long.Beach
@BethanyLutheran
LongBeach

A Memorial Service for John Lightle

A service for John Lightle is scheduled for today, June 22 at 2 pm at Bethany Lutheran.



PLEASE PRAY FOR:

Julie Cole
Roger Crabb
Kevin Dart
David Gamble
Betty Greene
Lynda Kernohan
Phyllis Lee
Marjorie Lightle
Tom Mooney
Larry Neasel
Christy Pierce
Mike Pierce
Suzanne Reed
Kat Totten
Eno Uti



PASTORAL CALL *announcement!*

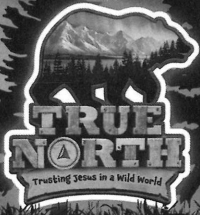


Nominations for the position of Associate Pastor of Connect Ministry transitioning to Senior Pastor are officially open. Nomination forms can be found in the church office or online -

<https://bit.ly/PastoralNominationForm>.

Please return your completed form to the church office by July 31st.

VACATION BIBLE SCHOOL STARTS TOMORROW!



JUNE 23-27, 2025
8:30AM - NOON

THIS FREE VBS IS FOR
AGES 3 YEARS OLD AND
POTTY-TRAINED THROUGH
ENTERING 6TH GRADE.





INTRODUCING: THE BETHANY BROADCAST

Whether you pick up a copy of Chimes upon leaving worship or read the Bullet when it arrives in your inbox during the week, you are reading one of the primary means of information delivery at Bethany. While they differ in some ways and are not identical across the board, if you've read both you know that they have the same core congregational announcements and information.

Starting in July therefore, our two primary congregational means of communication, while retaining their uniqueness, will share a name:

The Bethany Broadcast: *print edition*

The Bethany Broadcast: *electronic edition*

Worshiping Faithfully Hebrews 10:25



SUNDAY MORNING WORSHIP AND BIBLE STUDY SCHEDULE

SERVICE SCHEDULE:

8 am • 9:30 am • 11 am

COMMUNION SCHEDULE:

1st Sunday: all services

2nd Sunday: 9:30 am only

3rd Sunday: all services

4th Sunday: 9:30 am only

BIBLE STUDY SCHEDULE:

"Lessons of the Day" will be taking a break for the summer. Look for it returning sometime in the Fall.

Women's and Men's studies will be led by congregational members at 10:45AM. Location varies. Please contact the church office for more information.

BETHANY CYPRESS CAMPUS (HOLY CROSS)

Exciting new updates: The chancel has been poured, altar, font, lectern are in the works. Patio cover is scheduled for installation this week and AV begins the end of June.



Serving Passionately Ephesians 2:10

Introducing:

SERVANT LEADER TEAM: SPIRITUAL LIFE

WHAT IS SLT: SL?

Bethany's restructured constitution revises elder responsibilities into a new model - the Servant Leader Team: Spiritual Life. This team supports ministry staff and congregational worship through spiritual service, training, and theological study.

2

YEARS OF COMMITMENT



VOLUNTEER
BASED / NOT
ELECTED

CHAIR:

APPOINTED
AFTER SPRING
VOTER'S
MEETING

CO-CHAIR:

APPOINTED
(1 PER TEAM)

Gathered Connected Sent

team one:

ACC: ACOLYTE, CRUCIFER, COMMUNION

RESPONSIBILITIES

- assist in distribution of Communion (set up altar/table)
- assist in Baptism liturgy (prepare for the baptism)
- support and train acolytes and crucifers
- support worship staff with planning and logistics
- other duties assigned by worship leaders

4

MEETINGS PER YEAR

75-90

MINUTES OF TRAINING

ARRIVE
30

MINUTES BEFORE ASSIGNED SERVICES



UNLIMITED OPEN SLOTS

team two:

SOC: STUDY OF CONFESSIONS

RESPONSIBILITIES

- read and discuss the Lutheran Confessions with pastoral staff
- support doctrinal clarity and theological growth
- be familiar with all Bible study opportunities of the congregation

6

MEETINGS PER YEAR

75-90

MINUTES (EACH MEETING)

20

MEMBERS MAX



APPROVED
1-ON-1 WITH PASTOR REQUIRED

team three:

PSM: PRAYER & SUPPORT OF MINISTRY STAFF

RESPONSIBILITIES

- form 2-3 person groups to support a staff member
- commit to prayer, encouragement, and personal connection with assigned staff member
- team grows as staff grows

2

YEARLY TEAM MEETINGS

2-4

YEARLY MEETINGS WITH ASSIGNED STAFF MEMBER

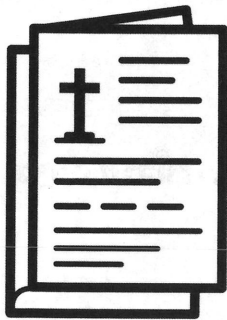
20-30

MEMBERS NEEDED



APPROVED
APPOINTED BY SENIOR PASTOR

EXCITING NEW VOLUNTEER OPPORTUNITY!



Looking for something fun to do on a Friday morning? We are seeking helping hands and happy hearts to join our Friday bulletin folding crew.

Time: 9:00-10:00 am

Place: Conference room in the church office

Point of Contact: Mara Widmann -
mwidmann@bethanylutheran.org

Giving Proportionately Luke 21:1-4

WE GIVE HIM BUT HIS OWN

At Bethany we know that "our stuff is not our stuff!" All that we have, all that we are, is a gift from Him. We also know that giving is a spirit-given compulsion. For Jesus Christ, in whose likeness we are being transformed daily, is the ultimate giver. Your gifts fund ministry that give people Jesus. His words, His promises, His presence, His gifts, His comfort, His strength are given through the gifts you are now giving Him. We thank and honor you for these gifts, because they thank and honor Him! *Questions? Contact Maralee Shaeffer at mshaeffer@bethanylutheran.org.*

THERE ARE MULTIPLE WAYS TO GIVE TO BETHANY INCLUDING:

Online, Text to Give,
Online Bill-Pay, US Mail,
Offering Box, **and now**
Apple Pay, Google Pay,
Venmo, and PayPal!



SUMMER IS IN FULL SWING...

...are you continuing to earn a rebate for tuition or ministry? It is a great time to use gift cards for all of your summer activities - outdoors, sporting goods, movies, travel, eating out, Disney, reading books, streaming & gaming... and don't forget the gas and groceries you will need all summer long! Stop by the Scrip table on a Sunday morning between services or the school office (summer hours / M-F / 9am - 3pm). However, the easiest way to make an impact is to download the RaiseRight app and earn right from your phone with eGift cards and reloadable cards. Scan the QR code at the Scrip table and get started today!



TO LEARN MORE:

Ruth Lopez
BLS Scrip Coordinator
rlopez@bethanylutheran.org
562-420-7783 ext. 58



Community Connections **Acts 2:44**

BETHANY LUTHERAN CHURCH IS *Hiring!*

DIRECTOR OF FINANCE AND OPERATIONS



Bethany Lutheran Church and School is seeking qualified candidates for the position of Director of Finance and Operations. This position will oversee the financial and human resources responsibilities of our organization for both the church and the school, along with overseeing some of our operational functions. This is a full-time benefitted position with an anticipated start date in late Spring 2025.

A full job description is available here:

<https://bit.ly/BethanyDPO>. If you are interested in this position please submit your name, email address, and a brief summary of your qualifications to **jobs@bethanylutheran.org**.

SAVE THE DATE!

BETHANY LUTHERAN FAMILY MINISTRY
KNOTT'S BERRY FARM

meet-up!



SUNDAY, AUGUST 17

TWO GATHERING TIMES:

12:30 - 1:30 pm

5:30 - 6:30 pm

We will meet for lunch and/or dinner breaks and then split off in groups of people who want to go on similar rides.

More info on tickets and meet-up locations to come. Questions? Contact Alissa at abrege@bethanylutheran.org.

CREATIVE CRAFTER'S *retreat!*

JULY 18 - 19

If you are a sewer, quilter, knitter, cross-stitcher, crocheter, scrapbooker, jeweler, painter, woodworker, or all-around crafter and you would love to have some uninterrupted time to finish a project or start something new...this is for you!

We will gather in the Parish Lounge of Friday and craft the day away starting at 10 am. Stay as long as you want but the lights will be on until 10 pm. We will return on Saturday morning from 8 am - 6 pm.

RSVP : Cindy Morlok

562-972-2747

cindylula@twc.com

Anita Armbrust

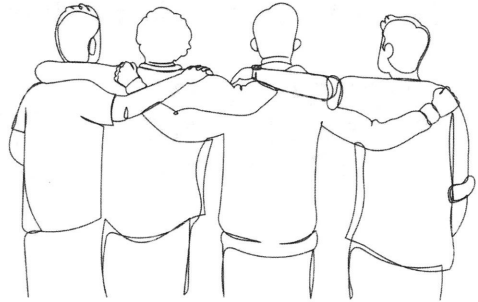
310-259-4766

bigdogredbear@yahoo.com

BETHANY LUTHERAN'S ANNUAL MEN'S RETREAT REGISTRATION IS NOW *open!*

A men's retreat is being planned for the weekend of October 3 - 5 at Luther Glen Retreat Center in Oak Glen. This is a wonderful facility that we have used before. The cost for this is \$275 which includes 2 nights and 5 meals. Bedding and towels are provided for our stay. Retreat starts with dinner on Friday and concludes with Worship on Sunday morning. Theme and program being planned. Should you only be able to join us for the day Saturday, cost is \$150 for the full day and 3 meals.

Last day to register is Sunday, September 21st at midnight.



QUESTIONS?

Contact Karl Fink -
kfink@bethanylutheran.org
562.421.4711. ext 19.



Are you an outdoor enthusiast looking for a group of friendly Lutherans to go camping with? Perfect! We are interested in putting together a Bethany camping group and if you would like to hear more and join in on the fun, please contact Phil Lopez or the church office. The first scheduled camping trip would be Bonelli RV Park in San Dimas - August 1-3, 2025.

LUYBEN DILDAY DINE & LEARN EVENT

Luyben Dilday Mortuary is hosting a complimentary dinner and informative discussion about funeral planning, cremation, veteran benefits, and more!

WHEN Thursday, June 26th at 6pm

WHERE Black Angus Steakhouse
5000 Candlewood St.
Lakewood 90712

RSVP (562) 362-3468
or scan the
QR code



Bethany Lutheran Family Ministries

Beach Day

Sunday, July 27, 2025
12:00, Noon at Seal Beach

Bring a picnic lunch and
your favorite sand & ocean toys.

We will meet on the sand,
just north of the pier.

Questions? Contact Alissa @ albrege@bethanylutheran.org

THE LUTHERAN HOUR *Updates!*

CHANGES TO THE LUTHERAN HOUR BROADCAST

The final broadcast of **The Lutheran Hour®** on KBRT 740 AM was April 27, 2025. To find other airings near you, check the broadcast guide at lhm.org/guide. The Lutheran Hour is available today in many other ways beyond traditional radio. From the American Forces Network, Sirius XM satellite radio, lutheran-hour.org, the Connected by LHM mobile app, Amazon Alexa, Spotify, iHeartRadio, YouTube, dialing in on your phone, and more, listeners can hear the weekly sermons whenever and wherever they are.

CHECK OUT OUR SELECTION OF PROJECT CONNECT BOOKLETS

Lutheran Hour Ministries' booklet ministry, **Project Connect**, is designed to provide down-to-earth insight about things people deal with every day—grief, stress, prayer, relationships—and more. You can share **Project Connect** booklets with friends and neighbors, and use them for your own encouragement and enlightenment. Bethany maintains a **Project Connect** booklet carousel in the narthex. Please visit the carousel, browse the booklets available, and take any that are of interest to you.

For more information about Lutheran Hour Ministries, visit lhm.org.

HAVE YOU SIGNED UP FOR THE BETHANY BULLET?



The Bethany Bullet is a weekly capsule of worship highlights and big information that your brain may or may not have 'downloaded' from the prior Sunday. The purpose is to bolster you

In faith, build you up in the key Biblical themes shared the previous Sunday in worship, to bring to mind the important issues on Bethany's plate and to broaden your awareness of opportunities of service to your Lord, your church, and community.

DO YOU HAVE AN ARTICLE FOR THE CHIMES?

Please submit all articles by **Wednesday** to kloya@bethanylutheran.org to be printed the following Sunday's Chimes. *Please note: Articles may be edited and reformatted in order to fit within the space available and all submissions will be sent to a pastor for final approval. Thank you for your understanding.*

*Blessings,
Kasey Loya*



UPCOMING YOUTH GROUP DATES

Scan the QR code to learn more about our youth ministries and to see a full list of upcoming events!



QUESTIONS?

**Children &
Family Ministries:**

Alissa Brege
562.421.4711 ext. 13
abrege@bethanylutheran.org

**Youth & Young
Adult Ministries:**

Kayleigh Lopez
562.421.4711 ext. 18
klopez@bethanylutheran.org



**DO YOU HAVE A PRAYER
REQUEST OR DESIRE
INFORMATION ABOUT A
MINISTRY, MEMBERSHIP,
OR ONLINE GIVING?**



**WOULD YOU LIKE TO
HEAR TODAY'S OR A
PREVIOUS SERMON
AGAIN?**

You can hear them
as podcasts at
bethanylutheran.org



WANT TO SEE IT AGAIN?

Today's 8 am service will be
live-streamed on our
YouTube channel:

