



# *The Clarion*

September

2024

Vol. 38, Issue 8

**WELCOME TO  
CLAIREMONT LUTHERAN/IGLESIA LUTERANA**



**Worship Services  
Sunday at 9:30 (English)  
Domingos at 11:30 (Español)**

## **CALL COMMITTEE REPORT**

After months of meetings, discernment and guidance by the Holy Spirit your Call Committee is pleased to report that a person was recommended to be the Senior Pastor of CLCILC. The Church council approved that recommendation.

We cannot identify that person right now until some logistics are finalized (checking recommendations, negotiating a compensation package, identifying appropriate housing). When those items are resolved there will be a congregational reception where you will get to meet and talk with the candidate.

Then there will be a congregational meeting where all members will get to vote on the Call and the compensation package.

Thank you for your patience.

Bill Fredericks

**OCTOBER**

**CLARION DEADLINE**

Friday, September 20 @ 4 p.m.

harrietmorris@cox.net

Associate Pastor: Elena Enriquez  
Cell: 858-248-7898  
iglesialuterana@clairemontlc.org

Church Office: Tanya Buchanan  
Office: 858-273-7423  
clc@clairemontlc.org

## SYMBOLISM IN OUR SANCTUARY

Many, if not most, Christians know that the Holy Spirit is active in their lives, often in a quiet unobtrusive way but other times in an active, undeniable way. We report that, “It was certainly the work of the Spirit.” I can report that the Holy Spirit was active yesterday.

Last week you heard reports about needed roof repairs and leaking stained glass windows. You also heard that a company that is expert in Dalle de Verre glass was hired to evaluate the situation. Yesterday, via a Zoom meeting, your executive committee met with the experts to hear their report.

Here I must interject some background information. For the better part of a year there has been an ongoing review of Church records and boxes of documents that were filed away. I knew that somewhere there was a document that explained the meaning of our beautiful, unique Dalle de Verre windows. I knew that the document existed, but I didn’t know where it could be found. It seemed a hopeless quest. Then the Holy Spirit entered in in a very tangible way.

Now back to the Zoom meeting. Much good information was exchanged. Questions were asked and answered both by your Executive Committee and by the experts. Near the end of the meeting one of the experts asked whether we knew the name of the architect who designed the Sanctuary. I knew I had the answer. I just had to find the flyer that accompanied the La Jolla Historical Society tour last month of Clairemont Churches. On the table just to my left was the pictorial directory from 1984. I had it out for another project. I opened the directory looking for the flyer and landed on a page headlined as, “Symbolism In Our Sanctuary,” exactly the document I was seeking all these months. I know that the Holy Spirit placed the directory where it was and guided me to open it as I looked for the other information requested. So, for those who don’t have a 1984 pictorial directory, here is the symbolism of our Dalle de Verre windows.

### THE FACETED WINDOWS

The Windows throughout the Church speak a symbolic message through colors. The [predominate](#) blue color signifies the Word of God throughout.

**Arch #1:** (Narthex end) “The Creation of the World. The window signifies the creation of the world brought about by the Word of God – hence a wide mixture of color climaxed by a “sun-burst” symbol in the first horizontal window.



(Continued on Page 3)

## THE FACETED WINDOWS

**Arch #2:** The creation of humankind and the appearance of Christ. A white flesh tone line is seen weaving its way through the window. Again, a great deal of blue is seen, meaning the Word of God. This arch is climaxed and tied to the next one by the second horizontal window, the symbol for Christ; the Fish.



**Arch #3:** The Ministry and Crucifixion of Christ. Large sections of Blue are seen, signifying the preaching of Christ. Red becomes more prominent signifying Christ's suffering and the arch ends in profusion of red with a spot of brown signifying the climax of Christ's suffering on the cross of crucifixion. This theme is further emphasized by the third horizontal window – the Cross.



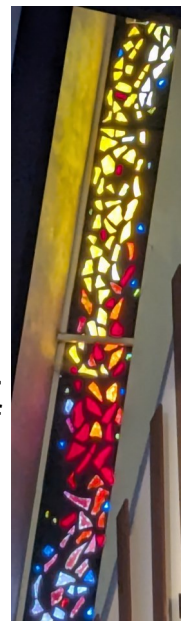
**Arch #4:** The Resurrection. The predominant color of this arch is purple, which is the kingly color signifying Christ the King who was raised from the dead and lives and reigns to all eternity. The fourth horizontal window carries out this theme with the symbol of the Crown.

**Arch #5:** The Eternal Life. (Not seen from inside the Church). This arch is predominantly amber in color which signifies the glory of God and humankind's eternal life with God in glory. The fifth horizontal window crowns the whole story with the symbol of the Trinity – Father, Son and Holy Spirit.

**The Vertical Window:** rising into the highest point of the building ties all the rest of the windows together with a flow of colors. The colors of the lowest point, not seen from the sanctuary, are greens and olives signifying creation. The color then progresses through the blues signifying the Word of God, the reds of suffering and crucifixion, the purples of resurrection and the final amber of eternal life.

The architect was Robert Des Lauriers. John Sigurdson, his partner, was the lead designer.

Bill Fredericks







# Church Business

May, June, July



Financial Report 2024								
Income					Expenses			
	Actual	Budget	Actual Year to Date	YTD Budget	Actual	Budget	Actual Year to Date	YTD Budget
May	\$28,603	\$31,203	\$195,277	\$163,567	\$32,715	\$38,063	\$190,438	\$199,314
June	\$77,576	\$46,203	\$275,193	\$209,770	\$42,440	\$38,063	\$235,218	\$237,378
July	\$29,329	\$31,203	\$304,321	\$240,973	\$30,311	\$38,213	\$265,529	\$275,591
July	net income -\$982				2024 YTD Net income*		\$38,992	
					*net income includes Roof Repair funds from June			

## WHY WE HAD A HOLE IN THE FRONT LAWN

The basement flooded through a broken clean-out in the children’s bathroom. Once everything and everyone was not in the way, drain construction plumbers were able to finally trace the sewer line and determine the cause of the backup – pine tree roots. The sewer line is cast iron underneath the church and is joined to a clay pipe in the lawn which runs under the pine trees to a city sewer manhole in the frontage road in front of the church.

This junction point is twelve feet down. The plumbers removed the tree roots from the clay pipe. From the outside, they saw the cast iron pipe that goes out to the lawn was in poor shape, put a camera down through the clean-out in the adult choir room and determined that a section of cast iron pipe should be lined, also. They have installed a clean-out in the lawn to facilitate future cleaning. (They mentioned to never put Drano or any other caustic base drain cleaner down cast iron pipes, it eats away the cast iron.)

Forty-five feet of clay pipe and fifty-five feet of cast iron pipe have been lined with PVC, and both clean-outs in the basement have been repaired.

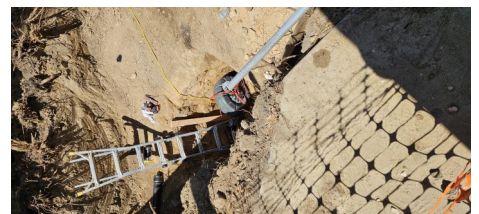
These two pictures are from the first day.”

The small gray pipes are lawn irrigation pipes which were crushed by pine tree roots, so I told the plumbers to go ahead and cut them. I’m getting estimates to get them repaired, (No wonder Francisco has been watering the lawn by hand.)



### Work in progress:

They are working on putting the clean-out in for the lawn between the clay and cast iron piping.



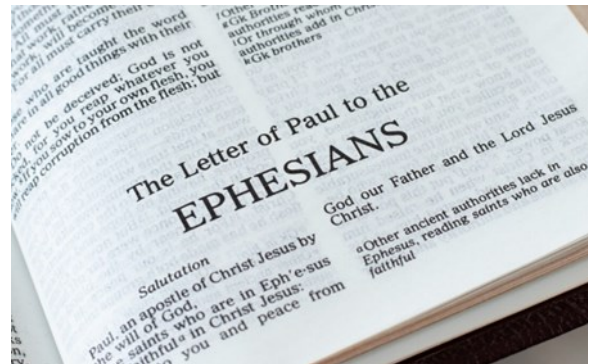


**GATHER MAGAZINE  
BIBLE STUDY**

**Fall 2024 “Receiving grace: A study of Ephesians”  
by the Rev. Heidi Haverkamp**

**SEPTEMBER - Session One: Is grace real?**

We often focus on how we fall short and deserve God’s judgment. What if, instead, we remember God’s continual gift of grace? God invites us to lead lives of love and wholeness. What is grace, exactly? Grace does not take away the sin and suffering of this life. Yet grace offers us a way to live from love despite hardship.



ALL are invited to attend the *Gather* Bible Study:

**Patience Bible Study:** Monday, September 9 at 12:30 p.m. in Room 4.

**Ruth Bible Study:** Thursday, September 12 at 10:00 a.m. in Room 1. Bible Study Leader is Janet Wood

**COMING IN OCTOBER:**

**Sunday, October 6**

Thankoffering Sunday with annual Mission Quilt Blessing.

**October 18-19 – Pacifica Women of the ELCA Annual Gathering.**

Spirit of Our Savior Lutheran Church, San Bernardino

**MISSION QUILTERS**

**Mission Quilters** continue to meet at the home of Ruth Andersen. ALL are welcome. For information on which Saturdays and time we are quilting, contact Ruth Andersen at 858-408-5194. Come all day, for an hour or two, for lunch around Noon, or just stop by to say “Hi” and see what we do.

**Calling all Bunco players!**

**When: 2nd Friday every month.**

**Where: Narthex**

**Time: 1:00 p.m.**

**\$5.00 Donation for charity and prizes.**

**All are welcome.**

**September 13 at 1:00 p.m.**



# S E P T E M B E R 2024

Sun                      Mon                      Tue                      Wed                      Thu                      Fri                      Sat

<p>1 9:30am Worship Service 10:30am Sept. Birthday cake will be served.</p> <p><i>Labor Day weekend</i></p>	<p>2 <b>Office closed</b></p> <p>1:00pm AA 8:00pm AA Meeting</p>	<p>3 1:00pm AA 6:30pm Handbell rehearsal 6:30pm Cub scouts 7:00pm Al-Anon</p>	<p>4 4:00pm Stephen min.</p>	<p>5 8:00am Sandwich Min. 1:00pm AA Meeting 2-3:30pm Southern Care group</p>	<p>6 12:00pm Food Distribution 1:00pm AA 6:00pm Al-Anon</p>	<p>7 7:00am SA Jack Volkmann Memorial at The Shepard of the Valley @ 11am. 4-6pm Choir workshop</p>
<p>8 9:30am Worship Service 11:30am Servicio de Adoración en Español, 12:30 - 6pm Iglesia Luterana fellowship</p>	<p>9 1:00pm AA 12:30pm Patience bible study 6:30pm Scouts 6-7pm Esperanza Youth Choir 7:30- 9pm Sanctuary Choir</p>	<p>10 1:00pm AA 4:30pm Evangelism team 6:30pm Handbell rehearsal 6:30pm Executive Team 6:30pm Cub scouts 7:00pm Al-Anon 7:15pm Council Meeting</p>	<p>11 12-2:30pm Southern Care group</p>	<p>12 8:00am Sandwich Min. 1:00pm AA Meeting 10:00am Ruth's bible study 2-3:30pm Southern Care group</p>	<p>13 12:00pm Food Distribution 1:00pm Bunco 1:00pm AA 6:00pm Al-Anon</p>	<p>14 7:00am SA</p>
<p>15 9:30am Worship Service 11:30am Servicio de Adoración en Español, 1:15pm Rise &amp; shine 12:30 - 6pm Iglesia Luterana fellowship</p>	<p>16 1:00pm AA 6:30pm Scouts 6-7pm Esperanza Youth Choir 7:30- 9pm Sanctuary Choir</p>	<p>17 1:00pm AA 6:30pm Handbell rehearsal 6:30pm Cub scouts 7:00pm Al-Anon</p>	<p>18 4:00pm Stephen min.</p>	<p>19 8:00am Sandwich Min. 1:00pm AA Meeting 2-3:30pm Southern Care group</p>	<p>20 12:00pm Food Distribution 1:00pm AA 6:00pm Al-Anon</p>	<p>21 7:00am SA</p>
<p>22 9:30am Worship Service 11:30am Servicio de Adoración en Español, 1:15pm Rise &amp; shine 12:30 - 6pm Iglesia Luterana fellowship</p>	<p>23 1:00pm AA 4:00pm Gospel Study, 6:30pm Scouts 6-7pm Esperanza Youth Choir 7:30- 9pm Sanctuary</p>	<p>24 1:00pm AA 6:30pm Handbell rehearsal 6:30pm Cub scouts 7:00pm Al-Anon</p>	<p>25 12-2:30pm Southern Care group</p>	<p>26 8:00am Sandwich Min. 1:00pm AA Meeting 2-3:30pm Southern Care group</p>	<p>27 12:00pm Food Distribution 1:00pm AA 6:00pm Al-Anon</p>	<p>28 7:00am SA</p>
<p>29 9:30am Worship Service 11:30am Servicio de Adoración en Español, 1:15pm Rise &amp; shine 12:30 - 6pm Iglesia Luterana fellowship</p>	<p>30 1:00pm AA 4:00pm Gospel Study, 6:30pm Scouts 6-7pm Esperanza Youth Choir 7:30- 9pm Sanctuary Choir</p>		<p><b>Food, Faith, &amp; Fellowship will start up October 4th at 5:00pm</b></p>			



# CLC Volunteer Schedule - September 2024

## Lay Readers

- 9/1 Bev Covey
- 9/8 Karen Creusere
- 9/15 Lynn Ten Eyck
- 9/22 Susan Gjerset
- 9/29 Gary Lange



## Communion Assistants

- 9/1 Holly Boyle, Rita Leatherman, Pam Allen
- 9/8 Gary Lange, Peggy Ritchie, Harriet Morris
- 9/15 Carol Nichols, Bonita Martinez, Rita Leatherman
- 9/22 Lewis TenHulzen, Gary Jaus, Aida Jaus
- 9/29 Pam Allen, Holly Boyle, Gary Lange



## Welcome Team

- 9/1 Pam Allen, Sandra Logan, Curtis Cline
- 9/8 Janet Wood, Emilie Lauchmen, Gary Lange
- 9/15 Karen Creusere, Kathy Reed, Janet Wood
- 9/22 Renee Shepard, Harriet Carmona, Rita Leatherman
- 9/29 Pam Allen, Emilie Lauchmen, Sandra Logan



- 9/1
- 9/8
- 9/15 Bev Covey
- 9/22 LeRoy Bannach
- 9/29

## Media

- 9/1 Lewis John TenHulzen
- 9/8 Lewis John TenHulzen
- 9/15 Lewis John TenHulzen
- 9/22 Lewis John TenHulzen
- 9/29 Lewis John TenHulzen



Lana	Neuman	9/3
Laura	Garcia	9/5
Debra	Pursel	9/10
David	Olson	9/12
Kimberly	Leatherman	9/12
Giselle	Mendoza	9/13
MariChuy	Valentan	9/13
Joanie	Maske	9/13
Terry	Beckmyer	9/17
Manfred	Dittmann	9/17
Becky	Prem	9/20
Clohe	Balderrama	9/20
Lewis	TenHulzen	9/22
Lesile	Timms	9/22
Elsie	Brady	9/25
Maria	Medrano	9/28
Lorri	Carlsen	9/28



**Altar Guild**  
**Rita Leatherman**  
 &  
**Sandra Logan**



*If you are not on this list and celebrate a birthday in September please contact the office to update our info.*