

# Current

GET PLUGGED IN!



**COMMUNITY  
-of GRACE-**  
LUTHERAN CHURCH

[gracepeople.church](http://gracepeople.church)

A COMMUNITY OF *Disciples*  
ON A MISSION OF *Grace*

**JUNE-JULY 2025**

# HELLO

## PRACTICING THE WAY

by Senior Pastor Darrin Vick

Did you know that the earliest followers of Jesus didn't call themselves Christians? They referred to themselves as people of the "Way." In fact, the term "Christian" was first attributed to early followers of Jesus by the Gentiles in Antioch and was possibly meant as an insult.

So what was the significance of the disciples of Jesus saying they belonged to the "Way?" There are two reasons: First, Jesus himself said in John 14:6, "I am the way and the truth and the life." To be a disciple of the Way meant that they were following Jesus. But it also meant that they were living the way Jesus lived! That is a serious challenge that does not come naturally to any of us. It is only possible through the supernatural power of the Holy Spirit and by practice.

This fall, we will introduce a book and small group course called "Practicing the Way" by John Mark Comer. It is a wonderful book, and it aligns beautifully with our formational values of Knowing,



Trusting, Imitating, and Speaking Jesus. Our staff has already completed the eight-week course, and I can assure you that it is a rich experience that has challenged me to the core. I can also say a spirit of grace permeates this course.

It is my hope that you will seriously consider participating in Practicing the Way this fall. Whether it's in a small group or just reading the book, I believe you will grow closer to Jesus. Find a way to practice the Way!

By Grace Alone,

**The Deadline for the August/September Current is July 10.**

4000 LINDEN STREET  
WHITE BEAR LAKE, MN 55110

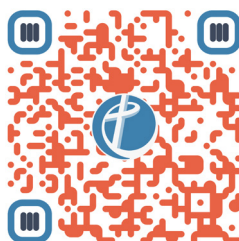
651.429.5349

[gracepeople.church](http://gracepeople.church)

[hello@gracepeople.church](mailto:hello@gracepeople.church)

[gracepeople.live](http://gracepeople.live)

## EASY ONLINE GIVING!



Scan this  
code with  
your device.

Simple.  
Safe.  
Secure.

## CONNECT

**DARRIN VICK**  
SENIOR PASTOR  
[darrin@gracepeople.church](mailto:darrin@gracepeople.church) x7315

**ANGIE WAY**  
ASSOCIATE PASTOR  
[angie@gracepeople.church](mailto:angie@gracepeople.church) x7306

**MARY ELLEN STEINKRAUS**  
VISITATION PASTOR  
[maryellen@gracepeople.church](mailto:maryellen@gracepeople.church) x7309

**ANDREW KELLY**  
STUDENT MINISTRIES &  
WORSHIP ASSOCIATE  
[andrew@gracepeople.church](mailto:andrew@gracepeople.church) x7312

**BRITTA MALY**  
KIDS MINISTRY DIRECTOR  
[britta@gracepeople.church](mailto:britta@gracepeople.church) x7308

**DAN LUGO**  
DIRECTOR OF DISCIPLESHIP  
[dan@gracepeople.church](mailto:dan@gracepeople.church) x7316

**HANNAH COLLINS**  
DIRECTOR OF CONNECTIONS  
& SERVICE  
[hannah@gracepeople.church](mailto:hannah@gracepeople.church) x7303

**JEANNE FILKINS**  
MARKETING & COMMUNICATIONS  
DIRECTOR  
[jeanne@gracepeople.church](mailto:jeanne@gracepeople.church) x7313

**KEITH NELSON**  
CONTRIBUTIONS COORDINATOR  
[keith@gracepeople.church](mailto:keith@gracepeople.church) x7311

**MARK HANSON**  
EXECUTIVE ADMINISTRATIVE ASS'T  
ORGANIST / CHOIR DIR.  
[mark@gracepeople.church](mailto:mark@gracepeople.church) x7325

**MELINDA KERN**  
STUDENT MINISTRIES DIRECTOR  
[melinda@gracepeople.church](mailto:melinda@gracepeople.church) x7302

**MIKE MATHISEN**  
EXECUTIVE DIRECTOR OF  
ADMINISTRATION  
[mike@gracepeople.church](mailto:mike@gracepeople.church) x7314

**PAUL WETTERLING**  
FACILITIES MANAGER  
[paul@gracepeople.church](mailto:paul@gracepeople.church) x7301

**SHANE STAMBAUGH**  
WORSHIP TECH COORDINATOR  
[tech@gracepeople.church](mailto:tech@gracepeople.church) x7320

**SUE QUINN**  
ACCOUNTS PAYABLE  
[sue@gracepeople.church](mailto:sue@gracepeople.church) x7310

**VICTORIA MATHISEN**  
KIDS MINISTRY ASSOCIATE  
[victoria@gracepeople.church](mailto:victoria@gracepeople.church) x7307



# WORSHIP

## TWO STYLES

Whoever you are, whatever your story, you are welcome here.

We invite you to slow down, breathe deeply, and open your heart to God. Contemporary Services are modern, informal, and band-led. Our Traditional Services include time-honored hymns and rich liturgical texts.

## SUNDAY WORSHIP

### CONTEMPORARY SERVICES

9 & 10:30 a.m.\* | Fellowship Hall

(Communion is served on the **First Sunday** of each month)

### TRADITIONAL SERVICE WITH COMMUNION

9 a.m. | Sanctuary\*

**\*STREAM LIVE OR LATER**

[gracepeople.live](https://gracepeople.live)



## "LISTEN UP!" *How Jesus Speaks to the Churches*

### SERMON SERIES BEGINS JUNE 15

Can you imagine what Jesus might say if he were to write a letter to our congregation?

We don't know for sure but we can learn a lot by listening to the way he addressed seven different churches in the book of Revelation.

Join us for our summer sermon series "Listen Up!" How Jesus Speaks to the Churches.

## LAKE BAPTISMS

### SUNDAY | AUGUST 10

1 p.m. | Memorial Beach, WBL

Are you interested in being baptized or affirming your baptism this summer? You have an opportunity in a real lake. **Reach out to one of our pastors by July 27 to show your interest.**

## PRAYER AFTER WORSHIP

Each Sunday, you have the opportunity to receive prayer from trained prayer ministers in the Prayer Chapel.

On the second Sunday of each month, prayer ministers will come to you. Please indicate your desire by staying seated after worship.

## NEW MEMBERS OF COMMUNITY OF GRACE

We are blessed to have sixteen new members after our Spring Catalyst discussion group! God continues to bless CGLC with wonderful people committed to serving the church and our community.

**Brian & Rachel Rosales**

**Becky Tanner**

**Anthony & Alisha Korpi**

**Arlene Yunker**

**Ben & Rachael Stassen**

**Tyler & Anne Wheeler**

**Allan & Nancy Boucher**

**Elaine & Bud Benson**

**Gordy & Wilma Leema**

## GREET & EAT!

**SUNDAYS | JUNE 22, JULY 20, & AUGUST 31**

Noon | Joe & Lisa Ehrman Home

Would you like to learn more about CGLC, but the next membership discussion group is too far away? Plan to attend one of these gatherings. Children are welcome. Please RSVP.

**Contact: Lisa Ehrman**

**Text: 651.230.4350 or Email: [leehrman@yahoo.com](mailto:leehrman@yahoo.com)**

## FALL CATALYST

**SUNDAYS | BEGINS OCTOBER 12**

**11:45 a.m.-1:15 p.m. | LL9**

Our four-week Catalyst Discussion Group is an opportunity to grow as a follower of Jesus and learn more about getting connected to our Community of Grace. A light lunch and child care are provided.

**Contact: Hannah Collins**

**[hannah@gracepeople.church](mailto:hannah@gracepeople.church)**



## SENIOR SERVICES AROUND TOWN

### FIRST WEDNESDAYS:

10 a.m. White Pine

Ecumenical Service of the Word

### THIRD WEDNESDAYS:

2 p.m. Boulders

Communion Service

### FOURTH THURSDAYS:

10 a.m. Waters of White Bear Lake

Ecumenical Service of the Word

### FOURTH THURSDAYS:

1:30 p.m. Cerenity

Ecumenical Service of the Word

### TWO SUNDAYS PER QUARTER:

4 p.m. Waverly Gardens

Ecumenical Service of the Word

**Contact: Pastor Mary Ellen**

**[maryellen@gracepeople.church](mailto:maryellen@gracepeople.church)**

# KIDS

## GRACE KIDS

Grace Kids is the umbrella for our Children's Ministry where children will grow in faith and learn the heart of God.

Grace Kids serves infants through fifth grade. **Grace Kids Sundays** are the main event and drop-ins are always welcome.

**Contact: Britta Maly**  
[britta@gracepeople.church](mailto:britta@gracepeople.church)

## GRACE KIDS SUNDAY SCHOOL

Mark your calendar for Grace Kids Sunday School to return September 7th.

**Contact: Britta Maly**  
[britta@gracepeople.church](mailto:britta@gracepeople.church)

*Make New Friends!* **PARENTS** *Snacks Provided!*  
*on the*  
**PLAYGROUND**  
**SUMMER SUNDAYS | 10:30 A.M.**

## PARENTS ON THE PLAYGROUND

**SUNDAYS | JUNE 1- AUGUST 24**

**10:30 a.m. | CGLC Playground**

Join us for this time of connection during the 10:30 a.m. service hour.

We will convene outside while our kids play on the church playground. Snacks are provided.

**Please bring your own lawn chair.**



## RETURN OF THE MYSTERY BOX

**SUNDAYS BEGINNING JUNE 1**

**9 & 10:30 a.m. | Worship Venues**

Each Sunday a different child from the church brings in a mystery item and one of our leaders is on the spot giving a message about the unexpected item.



## VACATION BIBLE SCHOOL (VBS)

**MON-THURS | JUNE 23-26**

**9-Noon | CGLC**

Vacation Bible School (VBS) is a week of faith and fun. Be sure to sign up soon. We have plenty of space for kids in kindergarten through 5th grade.

## VBS TRAINING

**WEDNESDAY | JUNE 11  
OR TUESDAY | JUNE 17**

**6-7:30 p.m. | CMC**

Training for all VBS ministry volunteers. Help us make memories. Sign up on Church Ctr.



## KIDS IN WORSHIP

**SUMMER SUNDAYS**

**9 & 10:30 a.m.**

Grace Kids are in Worship on Sundays throughout the summer. We have a special message just for them. Find activity bags at worship venue entryways. A family room is available near the skylight in the Commons.

## ART CAMP: ALL CREATURES (GR 1-5)

**MON-THURS | JULY 28-31**

**9-11:30 a.m. or 1-3:30 p.m.**  
(morning session has limited space)

In this year's art camp, we will expand our creativity by using many different mediums: textiles, yarns, pressed flowers, paper, and paint.  
**Cost: \$75 per camper.**

**Contact: Erika Lambert**  
[sawyer.erika01@gmail.com](mailto:sawyer.erika01@gmail.com)



Scan to find online registrations for summer camps and activities.

## SUMMER NURSERY

Nursery is available for infants through three year olds during 9 & 10:30 a.m. services. Check in at the north end of the Commons.

**Contact: Victoria Mathisen**  
[victoria@gracepeople.church](mailto:victoria@gracepeople.church)

# STUDENTS

## REFUGE & CONFIRMATION

**WEDNESDAYS  
SEPTEMBER-MAY**

**Refuge** is the umbrella for activities for students in grades 6-12. It is a safe place for teens to connect and learn how to live by biblical principles.

**Confirmation** is a faith formation pathway within Refuge. When you choose to be confirmed, you demonstrate your desire to follow Christ!

**Contact Student Ministries  
Director Melinda Kern at  
[melinda@gracepeople.church](mailto:melinda@gracepeople.church).**



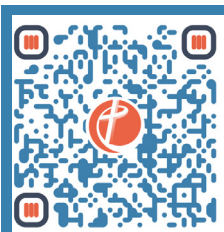
## BRNC FUN LAB

**THURSDAY | JUNE 12**

**6-9 p.m. | The Fun Lab in Blaine**

There will be unlimited laser tag, bumper cars, virtual reality, arcade games and more, plus pizza and pop. See the sign up on Church Center for more details about transportation.

**For students that have completed 5th-12th grade.**



Scan to find online registrations for summer camps and activities.

## SUMMER BLAST

**MONDAY-THURSDAY | JUNE 23-26**

**8 a.m.-5 p.m. | CGLC**

You won't want to miss it! Each day we serve at Vacation Bible School then enjoy lunch and an offsite activity like Grand Slam or Bunker Beach. **For students who have completed 5th-10th grades.** Space is limited.



## HS SUMMER CAMP

**SUNDAY-FRIDAY | JUNE 22-27**

**Faith Haven Camp, Battle Lake**

We will join Redeemer Lutheran for this fun week of camp together. Each day we will experience worship, powerful messages, Bible study, lake activities, campfires, and more!

**For students who have completed 8th-12th grades.**



## WILD MOUNTAIN

**WEDNESDAY | JULY 23**

**10 a.m.-5 p.m. | Taylors Falls, MN**

Enjoy go karts, alpine slides, a waterpark and more. Bring your swimsuit, towel, sunscreen, water bottle, and extra spending money for food and games. Bring a bag lunch if you don't plan to buy lunch.

**For students that have completed 6-12th grade. Please sign up by July 16. Cost: \$35 (includes transportation & admission).**



## REFUGE RISE & SHINE BRUNCH

**SUNDAY | JUNE 29**

**SUNDAY | JULY 27**

**10-11 a.m. | CGLC Fireside Room**

You have two chances to experience RRS over the summer! Bring a breakfast item to share.

**For students who have completed 5-12th grade. No RSVP required.**



## SUMMER ON MISSION

**SUNDAY-FRIDAY | AUGUST 3-8**

**North Heights Church, Arden Hills**

We're on mission locally this summer to make a difference for God's Kingdom in our own back yard. We are joining 5 other churches through the BRNC Network to work together for this mission week.

**For students who have completed 8th-12th grades by August. Please sign up by July 8.**





# ADULTS



## LET'S CELEBRATE YOU!

WEDNESDAY | MAY 28

6:30-8 p.m. | CGLC.

Let's get together to celebrate our ministry year and all who help to make it happen. Whether you send birthday cards to our homebound members, usher for Contemporary Worship, man the dishwasher after funeral receptions, or are part of the Pickup Choir, we want to celebrate you. Everyone is encouraged to attend. Who knows, you may become part of the program.

Fun and fine desserts for everyone!



## PRAYER & PRAISE

TUESDAYS | JUNE 10 & JULY 8

6:30-7:30 p.m. | Sanctuary

Join us for a night of prayer and praise. We will gather to share scripture, our favorite hymns and songs, and talk about where you're seeing the Lord at work. Please sign up at the Information Desk.

Contact: Angie Way  
[angie@gracepeople.church](mailto:angie@gracepeople.church)

## ROMEO

THURSDAYS | JUNE 5 & JULY 3

9 a.m. | Perkins on County Rd E

Retired Old Men Eating Out meets every first Thursday of the month.

Contact: Curt Schneider  
[curtisschneider@comcast.net](mailto:curtisschneider@comcast.net)

## JULIET

MONDAY | JUNE 2

11:30 a.m. | Blue Heron Grill, Hugo

MONDAY | JULY 7

11:30 a.m. | Cabin 61, WBL

Join us for these casual gatherings at a different location each month.

Sign up at the Information Desk or on Church Center.

Contact: Angie Way  
[angie@gracepeople.church](mailto:angie@gracepeople.church)



## PASTOR ANGIE'S BIBLE STUDY

WEDNESDAYS | JUNE 4 & 11

(THEN BREAK UNTIL SEPTEMBER)

4 p.m. | Prayer Chapel

Pastor Angie Way leads the discussion around the weekly study in the chapel.

Find the discussion guide on the Sermons page of our website:  
[gracepeople.church/worship/sermons](http://gracepeople.church/worship/sermons).

## LADIES' NIGHT OUT

MONDAY | JUNE 16

6:30 p.m. | Boca Chica (St. Paul)

THURSDAY | JULY 24

4:30 p.m. | Sak's Patio (WBL)

Sign up on Church Center.



## FARE FOR ALL (FFA)

FRIDAY | JUNE 13

FRIDAY | JULY 11

1-3 p.m. | CGLC Commons

Stretch your grocery dollars right here on the CGLC campus. FFA is able to offer groceries at a 30 to 40 percent discount.

No income restrictions.



## GS TRAINING EVENT

SUNDAY | JUNE 8

10:30 a.m. | Large Choir Room

All hands on deck for this thirty-minute training event. Come for the doughnuts and leave prepared for the big event. Please attend whether you are new to the sale or a seasoned volunteer.

## COMMUNITY GARAGE SALE

SATURDAY | JUNE 14

8 a.m.-1 p.m. | CGLC Parking Lot

The Community Garage Sale is a great way to help kick off Manitou Days in the second half of June. CGLC has hosted this event for 25 years as a way to bless our community! Vendors love the affordability of the sale and the amount of traffic strolling by their wares. Some have been here every year to sell their treasures.



# ADULTS



## MINISTRY FUNDING UPDATE

Results as of 4/30/2025

**YTD RECEIPTS: \$466,209**

Receipts are below plan by \$115,591

**YTD EXPENSES: \$551,543**

Expenses are \$29,924 below plan.

### NUMBERS THROUGH APRIL 30

CGLC giving is down \$52,023 in 2025 compared to 2024 and is behind our YTD Ministry Funding Plan (MFP) of \$581,800. We continue to manage our expenses and are **currently \$29,924 below our YTD MFP expenses of \$581,467**. This is great news, but history suggests our expenses will catch up to plan in the last half of the year. **Thank you for your continued support of CGLC and funding our ministry.**

Contact: Mike Mathisen [mike@gracepeople.church](mailto:mike@gracepeople.church)



### SCHOOL TOOLS

**JULY 6-AUGUST 10**

Drop Off in the  
CGLC Commons

We are collecting  
school tools for  
distribution to  
White Bear Lake

area schools and through Lutheran  
World Relief. A table is in the  
Commons during these five weeks  
with lists of needed items.

We are also looking for someone to  
spearhead shopping efforts with the  
monetary donations we receive.

Contact: Hannah Collins  
[hannah@gracepeople.church](mailto:hannah@gracepeople.church)



### ORGAN FUNDRAISER

**INSTALLATION: AUGUST 17-23**

CGLC is fortunate to offer rich  
Traditional Worship with a strong  
emphasis on time-honored music.  
Unfortunately, our organ is aging,  
so the Council has approved  
purchase of a 2-year old instrument  
from Minnesota Orchestra Hall.

The official price is \$120,000 which  
comes from CGLC reserves. We  
would like to replenish our reserves  
by raising at least \$60,000.

Please prayerfully consider how  
you can help us "fill the ranks."

Contact: Council VP Andy Hennig  
[aphennig@hotmail.com](mailto:aphennig@hotmail.com)

### PICKUP CHOIR FOR PENTECOST

**SUNDAY | JUNE 8**

9 a.m. | Sanctuary

The Pickup Choir will sing once  
this summer. If you would like to  
sing for Pentecost Sunday and can  
commit to one rehearsal, we'd love  
to have you join us. We will sing  
"Spirit of God, Descend." **Join us  
for rehearsal on Wednesday, June  
4, 6:30 p.m.**

Contact: Mark Hanson  
[mark@gracepeople.church](mailto:mark@gracepeople.church)

### FREE PRODUCE MARKETS RETURN

**THURSDAYS | JUNE-SEPTEMBER**

10 a.m. to Noon | CGLC Parking Lot

Our mission partner White Bear  
Area Food Shelf is bringing back  
free produce this summer.

June 19, July 17, August 15, &  
September 18.

Find more information at:  
[whitebearfoodshelf.org](http://whitebearfoodshelf.org)

### ENJOY SEWING? ANYTIME

Thank you to all who have helped  
sew bags for the Ronald McDonald  
House (RMH) and Lutheran World  
Relief (LWR).

The need continues. The LWR  
school bags are used for our school  
supply collection and go to children  
overseas. Pick up precut kits at the  
Information Desk.

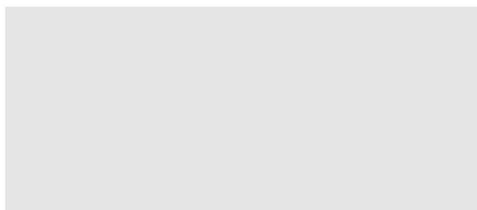
Contact: Burnette Foss  
(651) 429-1065

4000 Linden Street  
White Bear Lake, MN 55110  
(651) 429-5349

[gracepeople.church](http://gracepeople.church)  
[hello@gracepeople.church](mailto:hello@gracepeople.church)  
livestream at: [gracepeople.live](http://gracepeople.live)



Scan this code  
to find event  
sign-ups!



A COMMUNITY OF *Disciples*  
ON A MISSION OF *Grace*

## JOIN US OFF CAMPUS THIS SUMMER



### MI GOLF OUTING

**MONDAY | JUNE 23**

**9 a.m.-Noon | Royal Golf Club**

Help support our partner seminary! Join us for this great event with amazing golf, hospitality, and prizes.

The Royal Club is now a private club, so this may be one of the few opportunities you have to play this amazing course this year.

**Contact: Mike Mathisen**  
[mike@gracepeople.church](mailto:mike@gracepeople.church)

### JOIN THE PROJECT HOME MOVING TEAM

**Project Home, Bandana Square**

Opportunities to assist Project Home are increasing with their purchase of a new facility. CGLC has committed to pay for 40 TV mounts for the new location. If you want to join the list of handy people, please sign up on Church Ctr and we will be in touch.

**Contact: Hannah Collins**  
[hannah@gracepeople](mailto:hannah@gracepeople)



### MT. CARMEL RETREAT

**MONDAY-FRIDAY | AUG 11-15**

**Mt. Carmel, Alexandria**

Join Pastor Angie and friends from church at a 5-day adult retreat. Pastor Angie is the preacher for the week while Dr. Dan Liroy teaches on Galatians: Freedom in Christ.

**Call the camp today at 320-846-2744 to register!**

Register online at [mountcarmelministries.com](http://mountcarmelministries.com)