



**Selwyn Avenue**  
PRESBYTERIAN CHURCH

**The Nell Bates Society for Legacy Giving**



[www.selwynpres.org](http://www.selwynpres.org)



704-372-3836



2929 Selwyn Ave Charlotte, NC 28209





# BUILDING A LEGACY

## *for the enduring witness of Selwyn Avenue Presbyterian Church*

---

In 2008 Selwyn member, Nell Bates blessed Selwyn in her will with a gracious legacy gift that enabled the congregation to renovate the home next door to expand SAPC's footprint and mission for generations to come.

As Co-chairs of the Nell Bates Society, we invite you to learn more about the *Nell Bates Society for Legacy Giving* by reading through this booklet and engaging in further conversations about this exciting opportunity to sustain the growth and future of Selwyn Avenue Presbyterian Church.

Gratefully,

Deni Pifer and Ed Thomas





# THE SELWYN SPIRIT

Eighty-three years ago 42 faithful members organized Selwyn Avenue Presbyterian on January 11<sup>th</sup>, 1942. Seven months later a new church building welcomed 128 for Sunday School and 160 for morning worship. The "Selwyn Spirit" was born! War-time restrictions created the necessity for improvisations.



An old chicken coop was purchased, moved, cleansed, renovated and used for more than fifty years by the Weekday School, Men's Bible Class and Boy Scouts. By 1950 the church's membership had grown to over 300. The educational building, with classrooms on the lower level, the fellowship hall and kitchen were erected. The sanctuary was finished in 1954, and the addition known as the Bowman Building was completed in 1965. In 1998, the chicken coop was removed and a columbarium was built. In 2007 the Nell Bates house was acquired, and in 2020, a major renovation of Selwyn's gathering spaces was complete. Since then, Selwyn's leadership has been working diligently to strengthen Selwyn's financial scaffolding and administrative framework to ensure Selwyn's witness and mission on Selwyn Avenue remains stable and secure for generations to come.

Today, 600 members worship on the Selwyn campus along with more than 140 children. At a time when many faith communities are closing their doors, Selwyn has welcomed 100 new members in the last three years, and another 100 who worship on the Park Road campus since our merger with Quail Hollow Presbyterian Church earlier this year. Over these many years, love for this church and its existence has been evidenced through countless gifts of gratitude and in response to God's call through Selwyn's mission within and beyond our walls. Selwyn's history is rich in deeds, but more than that, it is rich in the people who have been taught and nurtured by the Selwyn Spirit. The dedication of those who had a vision more than eighty years ago lives on today.

Now, the Nell Bates Society for Legacy Giving draws us into a community intent on celebrating, claiming, and ensuring our shared love and hope for Selwyn Avenue Presbyterian Church. Together, our legacy gifts transcend and extend far beyond our individual efforts as we proclaim the promises of resurrection on earth as it is in heaven! In this way, joining the Bates Society is a spiritual and theological statement of faith more than a financial decision.

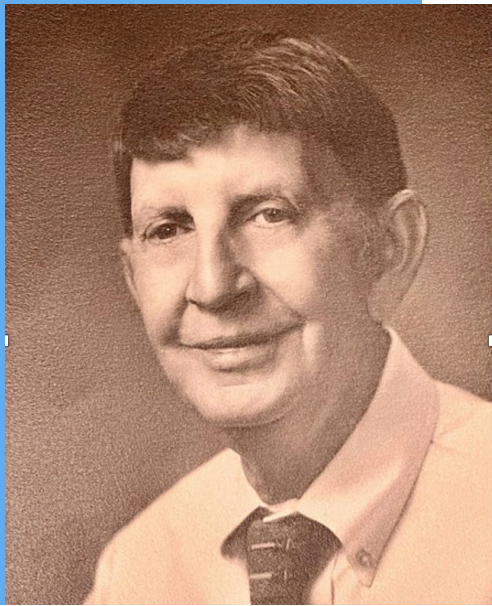
I give thanks to the many leaders and elders who, through extensive and careful planning, have created a clear and trustworthy pathway for those of us who would like to consider the various ways we can help create legacy through our planned giving. Their efforts and your faithfulness remind us of the eternal truth captured in Isaac Watt's hymn from the early 18<sup>th</sup> century.

May it be so! *Rev. Lori A. Laible*

O GOD, OUR HELP  
IN AGES PAST,  
OUR HOPE FOR YEARS  
TO COME,  
OUR SHELTER FROM  
THE STORMY BLAST,  
AND OUR  
ETERNAL HOME



# A JOYFUL ALLELUIA!



Over 60 years ago Dean Ferguson joined Selwyn Avenue Presbyterian Church as a young adult. While Dean's quiet faithfulness to God in Christ was rooted in his steady presence among us in worship and fellowship, his discipleship was intentionally inconspicuous. Dean quietly included Selwyn Avenue in his estate plan, ensuring his legacy gift would maintain the church he loved. Through planned giving, Dean knew his gift would impact Selwyn's congregation and expand SAPC's mission for decades to come.

With careful discernment, Dean stipulated how his financial gift should support the ministries and mission of SAPC. While a majority of Dean's legacy gift will root SAPC's general endowment fund, his love for SAPC impacts all of us right now. As you approach Selwyn's campus, lift your eyes to the Spire. Rotted wood, peeling paint, and a nest of angry hornets have been removed with some tender loving care!



While Dean was fiercely private, we cannot help but shine a light on how God's faithfulness is magnified through one of us who bears witness to God's grace with gratitude and generosity. For this reason, estate planning calls us to shout *Alleluia* with courage, even as we consider our own death! In this way, our legacy gifts, no matter how large or small proclaim the resurrection on earth as it is in heaven.





# PLEASE JOIN US

*As inaugural members of the Bates Society Katy and Raleigh Shoemaker, like Nell Bates, have a strong commitment to the stability and growth of Selwyn Avenue Presbyterian Church for future generations. Now, they invite you to join them in celebration of God's faithfulness from generation to generation.*



"Selwyn Avenue Presbyterian Church has been an integral part of our lives for many years. Katy was baptized here as an infant and Raleigh has been a member for over 50 years. We were also married at the church nearly 60 years ago. The church's spire was lit in memory of Katy's younger brother, Jimmy, who died in 1955. Our two children, Lindsay and Raleigh Jr. were also baptized and raised in the church.

Because we have a strong desire for Selwyn to continue its mission for generations to come, we have decided to become members of the Bates Society and hope others will as well."







# LET'S TALK



## > **ED THOMAS** The Bates Society Co-Chair

"It has been a blessing to have been a lifelong member of Selwyn. One of the constants present within this body of faithful believers is the giving spirit of our congregation. The Bates Society is a manifestation of that spirit at Selwyn. Membership in the society means the participants know how important it is that Selwyn sustains itself as a source of strength for this and future generations. My family and I are blessed to have Selwyn in our lives and to be a member of the Bates Society!"



## > **DENI PIFER** The Bates Society Co-Chair

"My husband and I have been members of SAPC for almost twenty years. Both of our children attended daycare and were baptized and confirmed at our church. SAPC's unique warmth and community in our members puts a smile on my face. I have served on session twice and during my first tenure, Nell Bates passed away and left a generous bequest to SAPC. Since then, in my role as an estate attorney, I have helped with many bequests to SAPC. I am thrilled to be a part of the Nell Bates Society which organizes those bequests and gives our members guided choices. I am very excited for the future of SAPC!"



## > **TINA WEINBERG** Chair of the Endowment Committee

"Planned giving and endowments offer members and friends of Selwyn Avenue Presbyterian Church the opportunity to leave a legacy of faith for future generations. Legacy gifts and bequests enhance the Church's ministry and witness to the love of God by providing continuity through the years for participation in the benevolence, worship, education and mission work of the Church. These gifts can truly transform our church by providing funding for projects and needs not included in the annual operating budget. They are making a difference in our church today by funding special music, repairs to the steeple, signage, church-wide retreats and the launch of a more robust Children's Chapel and Christian Formation Program."



# WHAT IS ESTATE PLANNING?



Estate planning is the process of making decisions about the future distribution of your material assets. It is a statement of both faith and finance, reflecting your desire to allocate a portion of your earthly assets to the church.

An estate plan will also include important information about end-of-life decisions that will ease the burden on your loved ones. A will is the cornerstone of a sound plan, but on its own does not make an estate plan.

**In addition to asset distribution,  
a good estate plan should include:**

**Decisions regarding guardianship  
for dependent children.**

**Power of attorney for your finances,  
should you become incapacitated.**

**A healthcare proxy responsible for  
making medical decisions on your  
behalf, if necessary.**

- A living will directive stating your wishes for life support should also be considered to offer guidance to your loved ones during this difficult time.
- Reducing estate and probate taxes may also be a consideration when planning your estate, allowing you to pass along more of your estate to your heirs and designees.

## KEY CONSIDERATIONS IN ESTATE PLANNING

- Will
- Durable power of attorney
- Healthcare proxy
- Tax reduction plans
- Guardianship for dependents
- Ownership of assets
- Living will directive
- Trusts

## STEWARDSHIP IS...

a fundamental act of worship for Christians. We know that all that we have comes from God; we know that God entrusts us with resources to advance the kingdom on earth through our lives, our families, our work, and our faith.

This Christian approach to estate planning — the process of making faith-based decisions about your final act of stewardship — can be fraught with emotion, fear, and anxiety.

But it can — and should — also be a time of reflection, joy, and purpose.



# GIVE WITH CONFIDENCE



The Session reconstituted the oversight of an Endowment Committee, and realigned SAPC's investment strategy with New Covenant Trust of the Presbyterian Foundation. As a member of the Bates Society you can be confident your legacy gift through planned giving will be managed and honored with integrity.

With clarity of purpose, parameters and vision, SAPC invites you to become a member of the Bates Society for Planned Giving. Thanks to the dynamic leadership of Selwyn's Finance and Endowment committees, Selwyn has updated and streamlined four designated endowment funds in keeping with their original intent and added two new funds.



**impact SAPC for years to come**

**sustain SAPC's foundational integrity**

**support growth initiatives beyond the annual budget**

**be managed according to your hope and intent**

## SAPC Endowment Funds

### The Selwyn Fund

*An undesignated fund supporting the general well-being and growth of SAPC.*

### The Building Fund

*A designated fund maintaining the integrity of SAPC's campus and buildings.*

### The Turner Fund

*A designated fund supporting crisis assistance, elder and youth initiatives, and benevolences.*

### The Parker Fund

*A designated fund for spiritual enrichment, growth, and renewal.*

### The Ferguson Music Fund

*A designated fund providing special music in worship.*





# LEGACY PATHWAYS

The Bates Society invites every household, and welcomes every gift large and small. Each impacts the legacy of Selwyn Avenue Presbyterian Church. There are many vehicles and options for donors and churches to use to manage funds over time. It is important to consult with a qualified financial and legal advisors on the appropriate process for moving forward.

## **A Bequest in Your Will**

*Bequests can be made directly to SAPC or through The Presbyterian Foundation.*

## **Life Insurance Beneficiary**

*Naming SAPC as a beneficiary for a policy no longer needed or serving its original intent can allow the donor to establish an endowment gift.*

## **Donor Advised Funds (DAF)**

*DAF's are like online charitable checkbooks of which the donor can manage and guide.*

## **Pooled Income Fund**

*Gifts pooled and invested under professional management where the donor receives a portion of the net income and designates those shares upon death.*

## **Retirement Plan Beneficiary**

*Funds such as IRAs, 401(k)/403(b), Keogh and others can be designated. Also, a charitable trust can be established using assets from retirement accounts.*

## **Proceeds from the Sale of Property or Real Estate**

*Property no longer used or the donor does not wish to manage, or a real estate gift made while donor still retains the use of it during one's lifetime.*

## **Charitable Remainder Trust**

*Allows donors to make a future gift while receiving income during one's lifetime.*

## **Charitable Lead Trust**

*A church as a beneficiary receives payments from the trust, usually for a set term. Assets are then returned to the donor's estate or heirs.*



Whether you are in your 20's or 90's,  
preparing for the future requires careful planning over time.  
To learn more contact The Presbyterian Foundation.  
Call 800-858-6127 or visit [www.presbyterianfoundation.org](http://www.presbyterianfoundation.org)





## GIVING THANKS



*Thank you for your care and commitment to Selwyn Avenue Presbyterian Church.*

You are invited to learn more about The Bates Society for Legacy Giving during one of our upcoming socials. Our leaders will share more about the vision and mission of Selwyn Avenue Presbyterian Church, will and estate planning, and the variety of ways The Bates Society impacts SAPC.



Members of the Bates Society will gather yearly to receive an update on the impact of our shared commitment, and give thanks for God's abundance from generation to generation.





# GLOSSARY



<b>Estate Planning</b>	<i>The planning, administration, and distribution of your assets during incapacity or death.</i>
<b>Will</b>	<i>A legal document that specifies how a person's property or estate will be distributed after death.</i>
<b>Bequest</b>	<i>A term for something, usually personal property, that is given or left by a person's will to another person or organization.</i>
<b>Trust</b>	<i>A fiduciary agreement that is part of an estate plan. Traditionally, trusts are used to hold assets for one or more beneficiaries.</i>
<b>Charitable Remainder Trust</b>	<i>A "split-interest" giving vehicle that enables people to pursue philanthropic goals while still generating income.</i>
<b>Charitable Lead Trust</b>	<i>An irrevocable trust designed to provide financial support to one or more charities for a period of time, with remaining assets eventually going to family members or other beneficiaries.</i>
<b>Endowment</b>	<i>A donation of money or property to a nonprofit organization which uses the resulting income for a specific purpose; the principal is never touched, and only the income is used, making this a gift in perpetuity.</i>
<b>Donor Advised Funds</b>	<i>DAFs are a fund or account maintained and operated by a public charity or a third-party entity. It receives contributions from individual, family, or organization donors who can advise on how to disburse the donations to IRS-qualified charities.</i>
<b>Appreciated Securities</b>	<i>Those securities worth more today than when they were acquired.</i>

*The information in this booklet is for general educational purposes only and does not constitute legal advice. Estate planning is complex and varies greatly depending on individual circumstances and applicable laws. Please consult with a qualified legal professional for advice tailored to your specific situation.*



# Selwyn Avenue

PRESBYTERIAN CHURCH



Lord, You have been our dwelling place in all generations.  
Before the mountains were brought forth or ever  
You had formed the earth and the world,  
from everlasting to everlasting  
You are God.  
Psalm 90