

KIVA

NEWSLETTER

December 2025



Sunday Worship

The Seasons of Advent and Christmas are upon us. You are invited to join us throughout for worship as we explore the theme: How did they know? Pastor Steve will be exploring characters around Jesus and wonder “how did they know who Jesus really was.” We hope you will join us in person, as the music of these seasons is always so amazing. But we are always online:

www.cpctucsonaz.org (scroll to the bottom of the homepage)

[www.Facebook.com/ChristPresbyterianTucson](https://www.facebook.com/ChristPresbyterianTucson)

www.YouTube.com/cpctucsonaz

8:30 a.m. Worship in/from the Fellowship Hall (with the band)

10:45 a.m. Worship in/from the Sanctuary (with the choirs)

Children are welcome in worship. Blue activity bags are available. Those who choose can use our two professional childcare staff in the Nursery.

December 7: Communion

Scripture: Luke 1:39-45

Characters: Zechariah and Elizabeth

December 14:

Scripture: Luke 2:8-20

Characters: The Shepherds

December 21: Journey to Bethlehem Event

No 8:30 a.m. service

9-10:30 a.m. Activities, food, music, petting zoo

10:45 a.m. Worship in the Sanctuary with the Pageant

Characters: The Magi

Wednesday, December 24: Christmas Eve

5 p.m. in/from the Fellowship Hall

Matthew 2:1-12 The Magi

8 p.m. in/from the Sanctuary

Matthew 2:1-12 Herod

December 28:

Whoa, how do we recover from Christmas,
And prepare for the New Year!

Journey to Bethlehem

Celebrate Christmas with Us

Sunday, December 21, 2025

**9-10:30 AM: Continental Breakfast,
Music, Petting Zoo & Christmas Games**

10:45 AM: Pageant in Worship

Free & Open to ALL

**Christ Presbyterian Church
6565 E. Broadway (East of Wilmot)**

www.cpctucsonaz.org

Christmas Eve Worship

5 p.m. Fellowship Hall

Matthew 2:1-12 The Magi

8 p.m. Sanctuary

Matthew 2:1-12 Herod

**Both services will be
live streamed.**



Greetings Saints!

So, the season is upon us. And while we try to keep it simple, to remember “the reason for the season,” we often get caught up in the busyness of Christmas. My goodness, the stores were decorated for Christmas one day after Halloween! I don’t know about all of you, but it makes me crazy!

To that end, Journeys in Faith will not be meeting in December, giving your instructor a bit of a break.

However, the Adult Bible Study group will continue to meet, at least for a few Sundays, with a DVD study of “Suffering and the Sovereignty of God.” They meet in classroom A/B at 9:30 a.m. (in person only)

Remember:

December 14 at 9:30 a.m., we have our congregational meeting. And on December 21 at 10:45 a.m., we present our annual Christmas pageant.

May the blessing of joy abide within you, and the blessing of peace rest upon you. May the blessing of love flow out through you, and may all the blessings of the Lord be yours at Christmas and in the new year. Amen

SHALOM,

Pastor Lesley

2-4 Youth Fellowship meets on the 2nd and 4th Sundays of each month, 5-6:30 p.m. All youth in grades 6-12 are welcome.



We have a great time together, and we grow in our faith at the same time!

December 14: Christmas Party!

December 28: No meeting



Talk About it Tuesday

Tuesdays at Noon Zoom ID 839 0008 2868

Every Tuesday at Noon (Tucson Time) Pastor Steve hosts a Zoom conversation about the previous Sunday's worship and sermon theme. Join with others as we take our faith deeper.

Wednesday Message

Most Wednesdays Pastor Steve sends out a special email just for a little faith thought and inspiration in the middle of the week. This is a special group mailing, so if you would like to be a part of it, email him a request to be put on the Wednesday Message list:

PastorSteveMelde@gmail.com

Faith Filled Fridays

Each Friday at Noon (Tucson time), Pastor Steve broadcasts a few moments of faith and inspiration. Join him on any of our three broadcast sites (just like Sunday mornings)

www.cpctucsonaz.org (scroll to the bottom of the homepage)

www.YouTube.com/cpctucsonaz

www.Facebook.com/ChristPresbyterianTucson

Sunday Funday



November's Sunday Funday saw the children and youth working together to thank veterans for their service. They made posters for the VA center. We also finished up our rotation on Jesus feeding the 5,000. We baked bread, played games, and had a picnic lunch as we dived into the story.

December will see us learning about the birth of Jesus as we prepare for the Journey to Bethlehem. Please try to be in Sunday Funday School every Sunday from 9:30-10:30 a.m. as we practice our parts and learn Away in a Manger. We will have a dress rehearsal on December 13th at 1 p.m. and the Journey to Bethlehem will be on December 21st. Thank you for your support.



CPC Women's ADVENT EVENT

Saturday, December 6, 2025

We are so excited to once again embrace the Christmas spirit. We hope you'll join us and invite your friends as well! Here are the details:

- The **Craft, Cookie, and Candy Sale** will be open on the Patio 9:00-10:45 a.m. Cash, checks, and credit cards (with \$10 minimum) will all be accepted at the sale. Refer to the Crafty Ladies' Kiva article if you'd like to donate baked goods or pre-order Hershey Snow Friends or Nutcrackers.
- The **Buffet** is open seating in Fellowship Hall between 9:00 and 10:45 a.m. so folks may eat/sit at their leisure. We will have a small number of 'reserved' tables available in Room E-F for parties of 6 or more. Inquire when buying tickets.
- The **Program** will start at 11:00 am in the Sanctuary and include music, laughter, and inspiration as we prepare our hearts and minds for Christmas. Our speaker is CPC's Ingrida Cazars and, yes, the Bobs will also be with us!
- **Tickets** continue to be just \$10 and will be on sale on the patio before and between services on Sundays, Nov 16, 23, and 30. Payment should be in cash or check made out to CPC with WAE in the memo line. If you're unable to be at worship, folks can also purchase tickets through noon Monday, Dec 1, by contacting Julie (see info below). Upon arrival at the event, please first stop at the Welcome Table to get your pre-printed name tag. No need to bring your ticket with you.
- **Men**, this event doesn't happen without you! Please sign up to participate as greeters/helpers and as part of the "Bobs" on the patio during ticket sales or by reaching out to Julie at misbehavinswings@yahoo.com. Plan to wear a white (or other solid color) button down shirt and black pants if you have them. Stop to get your red bow tie in room A/B behind the kitchen and meet in the Sanctuary at 8:15 for 'rehearsal' and instructions. As we continue to 'step up our game', we will have an additional non-mandatory but encouraged rehearsal on Sunday, Nov 30, at 11:45 a.m. in the sanctuary.
- For those of you unable to be with us in person at the Women's Advent Event, the program will be available for viewing on the CPC website and Facebook pages; and the Craft/Cookie/Candy Sale will continue on the patio on Sunday, Dec 7, between worship services.

We look forward to celebrating Advent with you!

Julie McCrea: 520-861-8131 or misbehavinswings@yahoo.com

Pam Cullop: 520-271-6678 or pjcullop@gmail.com





CPC Missions CORNER

It has become a tradition at Christ Presbyterian Church to donate much-needed items to non-profit organizations in memory of or in honor of loved ones, rather than flowers, at Christmas and Easter. This Christmas, the Mission Team chose St. Luke's Home.

St. Luke's has been providing low-income, senior housing for over 100 years. The residents are on fixed incomes, some as low as \$800 a month. By contributing necessary items to the residents and facility, we are helping alleviate some of their monthly financial burdens. Instead of dedicating poinsettias, we are asking for essential items or cash donations of \$20 or more.

We will collect donations from December 7 to December 21. Please drop off your donations in Fellowship Hall or the Sanctuary. If you are dedicating the donation in honor of someone, forms will be available to provide the necessary information. The dedication information must be submitted by December 21 to be included in the special memorial bulletin. The donations will be blessed on Christmas Eve.

Items needed:

Paper products, large and extra-large adult pull-up diapers, stick deodorant, travel-size mouthwash, toothpaste, body lotion, shampoo, bar soap, white twin-size bed sheets, laundry detergent, bleach, laundry hampers with lids, small packs of dog treats, Premier Protein or other high protein shakes, granola bars, crackers or high protein snacks, canned vegetables, fruit, sauces and meat, peanut butter, jam, rice, oats, cereal, coffee, tea bags, oil, baking soda, dried fruit, pasta, nuts, flour, pudding.

Thank you for your generosity. St. Luke's is very appreciative of CPC's support.

Merry Christmas! Christ Presbyterian Mission Team

St. Luke's Home Christmas Memorial

Honor your loved ones with a donation of necessary items for the residents of St. Luke's. If you can't shop, a \$20 donation will be used to purchase items. The deadline to submit names for the Christmas memorial bulletin is December 21.

In memory of (deceased)_____

In honor of (living)_____

Given by_____

Amount paid \$_____ check_____ cash_____ I donated items_____



COMMUNITY
FOOD BANK
OF SOUTHERN ARIZONA

GET INVOLVED. MAKE A DIFFERENCE

We're bringing a group of 10-12 folks to volunteer at the Community Food Bank of Southern Arizona on **Saturday, December 13th from 9-Noon**. Hopefully, we'll carpool from church.

Our help is needed to pack emergency food boxes and bags for families and seniors across southern Arizona. We'll participate in an assembly-line activity and work together to pack non-perishable food items and more for those in need. It's actually a lot of fun and a great team-building opportunity.

SOME RULES:

Please note that the warehouse assembly line does get hot and is in a limited space.

BUT: No tank tops, crop tops, short shorts, or sandals/flipflops.

No politically affiliated clothing.

All shoes must be closed-toe. Sneakers are fine.

Sign-up will be November 30 and December 7

Stewardship and Finance News

Thank you. Thank you to all of you who have given so generously to the General Fund and to Special funds this year. Together, we have done some faithful work in the name of Christ. As the year comes to an end, we hope your giving will continue. For tax purposes, we are asking that your 2025 giving be into the church office by Sunday, December 28th. That will allow our bookkeeper and tellers to make sure that your gift is recorded as a part of this year's giving.

As you know, we continue into 2026. The New Year will bring us continued work in ministries and missions that we've already been a part of, and it will provide opportunities to join God in some new ways. We invite you to be as active a part of our congregation as you can be, giving of your financial support, as well as your personal support through prayer, volunteer time, talents, and ideas.

Together, we are getting ready to celebrate our 70th Birthday as a congregation. We're still a very vital and active congregation, sharing in the call of God through Christ to worship, learn, live, and share all in the Christian faith.

Thank you for your part in it.

Your Stewardship and Finance Team.

Congregational Meeting Sunday, December 14,
9:30 a.m. in Fellowship Hall or on Zoom
(ID 860 1777 8648)

Elders and Deacons will be elected, the salary for
Pastor Melde will be approved.

SANDS Walk

A team of 20 friends and family members of CPC walked at the Southern Arizona Network for Down Syndrome (SANDS) on Saturday, November 15. Besides enjoying the many activities – dancing, arcades, vendors offering resources, food trucks - they raised over \$ 2,600. **THANKS CPC for your support!**



Presbyterian Women of CPC



Craft News

The annual Craft and Cookie fundraising sale will take place in conjunction with the annual Women's Advent Event on Saturday, December 6. The craft and cookie sales will continue into Sunday, December 7, before and after each service for those not attending the Women's Event.

Please take some time to explore and shop from the huge variety of handcrafted, sewn, crocheted, knitted, and donated treasures. The annual Hershey Bar creations include our newest Angelina the Angel and our returning Snow Friend. Lianne's bakers have been creating some beautiful Christmas Cookies and will have other delightful goodies to purchase. Renelle will put out a variety of live plants in lovely pots. The microwave cozies, dish towels for hanging, aprons, table runners, Christmas ornaments, cards, and decorations in abundance, and SO MUCH MORE will be available for you to purchase.

The net proceeds from all craft sales are given to various organizations (mostly local) in the community, with special attention to those who provide services to women and children. Thanks to your support, we were able to disburse \$7,150 last year in various amounts to the following organizations:

- Interfaith Community Services
- Menaul Historical Library of the Southwest
- Sister Jose's Women's Center
- Frontero de Cristo
- TMM Family Services
- Angel Heart Program
- Tucson Family Food Project
- Presbyterian Church in Sells – Food Pantry



While the organizations we select to support may change from year to year depending on community needs, we keep support for women and children as our premier priority.

After the sale, the Craft Group will not have regular meeting events in the month of December. We will spend the remaining two Wednesday meeting days reorganizing after the event and having our annual Craft luncheon, and then take a break until after the new year. In 2026, we meet on Wednesday, Jan 7.

The “Crafty Ladies,” as we call ourselves, meet regularly each Wednesday, from 9 a.m. to 12 p.m. in classrooms A/B. We break around 10:30 for a light snack or to celebrate a birthday for one (or more) of our group. Join us! Feel free to bring a craft or sewing project of your own, or help to color the hand-stamped cards, or even create new ones from recycled cards. We have all the supplies needed for almost any project.

Some, especially those who sew, do so at home and also attend the Wednesday meeting to enjoy the camaraderie (and snacks). Pop in some day and see if you’d like to stay.

Crafts may be purchased on Wednesdays during our meetings or on most Communion Sundays, when mostly seasonal items are on sale in Fellowship Hall. November 2 is the next monthly sale date.

*The PW Craft group is the fundraising branch of the Presbyterian Women of Christ Presbyterian Church’s mission projects. The money collected from the sale of our handcrafted items and cookies at the Christmas sale is donated to various (mostly local) organizations that support women and children.

For questions, call or text Pam Cullop: 520-271-6678 or send me an email: pjcullop@gmail.com.

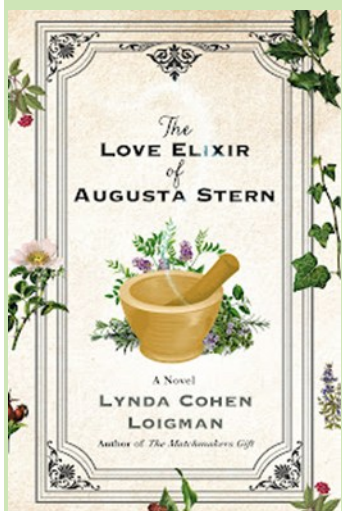
VIRTUAL BOOK CLUB

Tuesday, January 20, 1 p.m.

Zoom ID 813 6830 2106

TIME TO READ A GOOD BOOK!

The CPC Virtual Book Club will be taking time off in December, meeting again on January 20 at 1:00 when we'll be reading something fun:



The Love Elixir of Augusta Stern by Lynda Cohen Loigman.

On the cusp of turning eighty, newly retired pharmacist Augusta Stern is adrift. When she relocates to Rallentando Springs—an active senior community in southern Florida—she unexpectedly crosses paths with Irving Rivkin, the delivery boy from her father's old pharmacy—and the man who broke her heart sixty years earlier.

A Story with sweetness, charm and an ode to second chances.

MEXICAN TRAIN

DOMINOES 1 p.m.

Wednesdays, December 3 & 17
in A/B

Join us on the first, third, and sometimes fifth Wednesday of the month. Have fun playing this challenging game of dominoes. If you don't know how to play, we will teach you!



FELLOWSHIP



MEN OF FAITH BREAKFAST

Wednesday, December 17, 7:30 a.m.

All the men of the church are invited to gather for breakfast. We meet on the third Wednesday of each month at Biscuits Café at 7026 E. Broadway Blvd. We pay our own way and have a lively faith discussion.

CASA MARIA MINISTRY

Tuesday, December 23, 8 a.m.

The Casa Maria Lunch Ministry meets the fourth Tuesday of each month to put together 200 lunches for the Casa Maria Soup Kitchen. If you would like to join them, contact Cindy at ridingsc@comcast.net.

Drop off your sandwich donations before the next meeting is Tuesday, September 23, 8 a.m. in Fellowship Hall Kitchen.



RAINBOW FAITH FELLOWSHIP

Thursday, December 11, 6:30 p.m. in Patio Room

Do you consider yourself an Ally? Do you want to know what an Ally is and how to be one? Are you a part of our beloved 2SLGBTQIA+ community and would love to have a brave space to gather in fun and fellowship? We meet monthly to do just that. Together in the Peace of Christ, we will use Biblical and community resources to support and grow together while navigating the world and our lives, knowing that we are never alone. If you are ready for conversation and connection, you know where to find us! Lhasa Compton leads.



Flea Market News

No December Secondhand - we will take the month of December off in order to fully celebrate all the activities and special days of the Holy season. We hope you can help us process the donations at hand so we may restart in January with an empty and clean closet. Please note that **donations will continue to be collected in December, but drop-offs must be coordinated with Claudia Howell or Pam Cullop**, whose contact info listed below.

We so appreciate all who came to help sort, clean, price, and box the overwhelming amount of donations collected in November. You are an awesome group of volunteers!!!

2nd 🖐️ schedules:

Saturday: 9 a.m. to 2 p.m.. Lunch provided. Donations accepted until 2 p.m..

Sunday: 9:30 a.m. to 2 p.m. Lunch provided. Donations accepted only until noon in order to allow for processing by the end of the same day.

In an effort to decrease the number of discarded plastic water bottles on the planet, we now have a water dispenser set up in the MPR kitchen for refilling our personal bottles.

Flea Market Donation reminders:

- We no longer pick up donations. See the pink box about Pink Pick Ups Furniture Taxi
- When donating electronic items, please include and attach all necessary cords, transformers, remotes, and accessories to the item being donated.
- We sell only items that are clean and in good working order. Please wash or dust the donated items before bringing them in.
- Clothes and linens that are stained, ripped, faded, or worn out are not included in the sale.
- We no longer accept non-flat screen TVs, mattresses, large appliances, pianos or organs, items with broken or missing pieces (including furniture), paint, flammable or poisonous items.

Pink Pick Ups Furniture Taxi

The Flea Market Team hires Pink Pick Ups to move boxes after Secondhand Weekends and to work at the Flea Market each March. Consider contacting owner Nathan Heuser for a free estimate. He charges hourly, with a one-hour minimum of \$125-\$150, depending on the volume and distance. He prefers texting at **520-268-5670**. Please plan ahead and allow 2-3 days for a callback.



PRESBYTERIAN WOMEN

Accepting donations of the following:

Ronald McDonald House: Pop tabs, disinfectant wipes, and chemo caps.

Lions Club Glasses: Lenses, frames and any glasses.

Pima Animal Care Center (PACC): Prescription medicine bottles with caps. The veterinarians need the bottles to send medicine home with animals when needed. Please remove the labels before submitting.

Banco de Tapitas A.C.: Bottle caps to assist children with cancer who are unable to cover the cost of their treatment. All caps are acceptable as long as they are plastic.

Please put donations in the Patio Room (by the Sanctuary) inside the metal collection closet on the north wall. Plastic bins are labeled for each item.

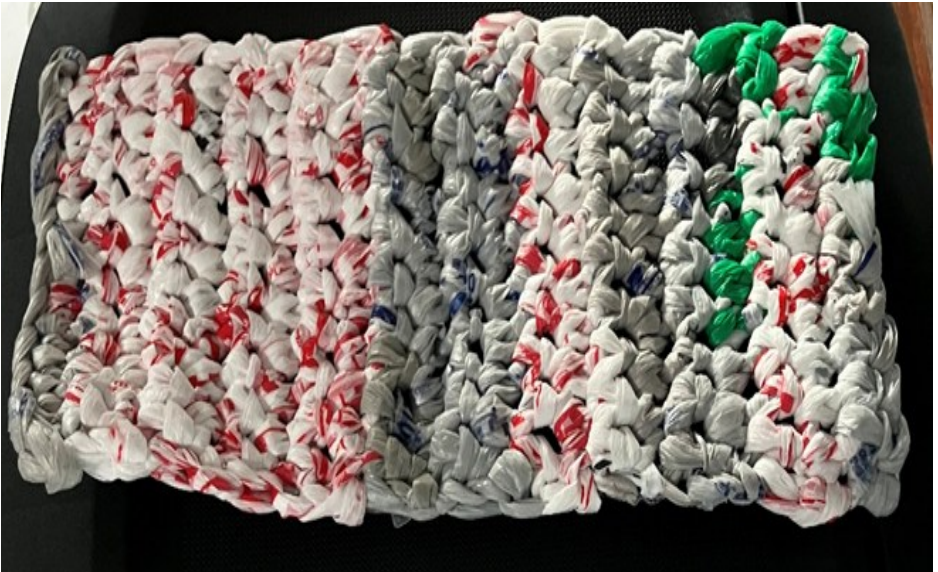


Plastic Grocery Bag Collection

Mat-Makers weave plastic grocery bags into sleeping mats. It takes approximately 600-700 bags to make a mat measuring 30" x 60". They donate the mats to Sister Jose Women's Shelter, who distribute them to the unhoused.

Please bring your plastic grocery bags and place them in the container located in or near the Patio room.

Thank you for caring and repurposing your bags!



Our December Birthdays!

| | |
|--------------------|---------------------------|
| 1 Luke Hopkins | 18 Becky Hodges Burdeshaw |
| 4 Bob Burdeshaw | 18 Luke Miller |
| 4 Conner Cech | 20 Sheri Goddard |
| 4 Susan Hein | 21 Bill Street |
| 4 Janet Rowe | 22 Chris Crowder |
| 8 Edwin Hopkins | 22 Laura Manning |
| 8 Jonah Valentine | 23 Christine McCleery |
| 11 Sagan Friskey | 24 Dave Koch |
| 11 Scarlett Miller | 26 Kenna Hopkins |
| 13 De-De Chandler | 26 Sunny McFarren |
| 14 Nicole Melde | 27 Donnie Luther |
| 16 Clover Compton | 30 Emily Beck |
| 16 Shelby Gaither | 30 Steve Melde |
| 16 Wyatt Hodges | 30 Susan Simpson |
| 17 Tyler Dittmann | 31 Zach Hodges |
| 17 Katelyn Murphy | |



January KIVA

Because December has shorter days and is a busier month, the deadline for submissions is earlier: Monday, December 8.

Don't get left out!
Get your news in on time!



CHRIST PRESBYTERIAN CHURCH

6565 E. BROADWAY • TUCSON, ARIZONA 85710

Member of the Presbyterian Church (USA) & Presbytery de Cristo

The Rev. Steven P. Melde, Pastor
(PastorSteveMelde@gmail.com)

Steve Brownson, AV Coordinator
(sbrownson52@gmail.com)

Robin Gilbert, Director of Children's Christian Ed
(robbert77@juno.com)

Luke Diamond, Director of Music
(La24diamondcpc@gmail.com)

Susan Simpson, Accompanist
(susanannsimpson@hotmail.com)

Stella Lopez, Office Manager
(office@cpctucsonaz.org)

Doug Wingert, Bookkeeper
(bookkeeper@cpctucsonaz.org)

Cathy Wade, Facility Monitor
(cawhaw421@gmail.com)

Tara Luther, Childcare
(tlbohrer17@yahoo.com)

Church Office Hours

Monday - Friday 9 a.m. - 3 p.m.

(Closed for lunch 12 - 1 p.m.)

Phone: 520-886-5535

www.cpctucsonaz.org

Deadlines

KIVA January 2026 articles
due by 12 p.m. on Monday,
December 8, 2025

**Weekly Bulletins and Friday
News, requests for flyers or
inserts**

Please submit your articles and
requests by **Wednesday at
noon!**



Facebook.com/ChristPresbyterianTucson



Twitter, Snapchat, Instagram, Youtube:
@CPCTucsonAZ