

KIVA

NEWSLETTER

February 2025



Sunday Worship

Join us each Sunday for worship.

8:30 a.m. in/from the Fellowship Hall, led by the Band

10:45 a.m. in/from the Sanctuary, led by our choirs

If you can't be in person, join us online:

www.cpctucsonaz.org (scroll to the bottom of the homepage)

www.YouTube.com/cpctucsonaz

www.Facebook.com/ChristPresbyterianTucson

Children are always welcome in worship. Blue activity bags are available in both worship spaces.

February 2nd: Communion

Preacher: Pastor Steve Melde

Liturgist: Fred Hubbard

February 9th:

Preacher: Lesley Abrams

Liturgist: Kenna Hopkins family

February 16th:

Preacher: John Arbuckle

Liturgist: Liam Street

February 23rd:

Preacher: Monica Russell

Liturgist: Tara Luther

Faith Studies on Sunday Mornings



Greetings Saints!

Guess what the Adult Bible Study folks are reading? REVELATION.

Guess where and when they meet? 9:30 every Sunday in Room E/F

Guess what's up with *Journeys in Faith* which meets most Sundays at 9:30 in E/F?

Guess the *Journeys in Faith* Zoom ID (868 3291 1993)

February 2: Reparations Part 2: How do we right the wrongs of history?

February 9: Who is God?

February 16: Christian Nationalism

February 23: The Four Agreements

May you expand your horizons with our Adult Education offerings at CPC.

Shalom, Lesley

P.S. SAVE THE DATE

I know...I know. March is all about Ash Wednesday (March 5), Lent and our Flea Market (March 13-15). But allow me to mark one more important date on the calendar:



WORLD DAY OF PRAYER – March 7

We'll be opening up our sanctuary for folks to explore new ways to pray. Prayer stations will allow you (as well as community members) to learn how prayer can be more than Grace before the meal or Prayers at bedtime. Did you know a penny can inspire new ways of thinking about God? Or that a world map will allow you to join others in praying for a more peaceful planet? More details in next month's Kiva. But in the meantime, please plan to participate in this meaningful opportunity.

Sunday Funday

Kids K-6th Grade

Summer Camp at Christ Presbyterian Church!

June 30-July 3rd from 9 a.m.-noon.

Summer camp is coming! We will be digging into the Bible through science. We are looking for volunteers to help with activities.

Easter is on the way! We will be having face painting, games and crafts in the multipurpose room plus an Easter egg hunt. We are looking for volunteers to run the games and activities. We need donations of filled plastic Easter eggs.

If you can help or if you have any questions, please reach out to Ms. Robin at robbert77@juno.com

You could be a great worship leader!

Laura Manning recruits folks from within our congregation to help lead worship. Usually, the Liturgist for the day leads the Call to Worship, the opening prayer, the Scripture Reading, and blesses the offering. We can help you with all of that. If you're interested in being a liturgist, let us know through the church office, and we will get you in touch with Laura. You could be a great worship leader!

Sabbatical News for Pastor Melde

At the recommendation of the Personnel Team, the Session Leadership Team has approved a special Sabbatical Leave for Pastor Steve Melde. It's customary to offer a three-month Sabbatical every 7 years for a pastor to do some deeper study and break the routine of daily pastoral leadership for a while, which helps to rejuvenate the leader.

Pastor Melde has been approved to begin that Sabbatical process this year. In 2025, he will take four of the allotted twelve weeks. Then, he will take two weeks of Sabbatical leave over the following four years each. That way, he can have some extended time for study and growth over these next several years. This will help the church not to have such a long absence from our pastor, and yet, make the Sabbatical process possible.

To that end, Pastor Melde will be away for three weeks starting February 3rd, and returning to CPC on February 25th. He's saving one week of Sabbatical leave for the late fall to help plan the Christmas holiday season.

He has already recruited some really great preachers and worship leaders from within our congregation.

Also, while he is away Steve Brownson and other church leaders will be available for pastoral care. Just call the church office as needed. Let's keep him in our prayers so that he's filled with the Spirit to share with us when he returns.



Outreach & Communication Team

Tell us about a moment or way that CPC has helped you feel closer to God.

We hope to help you share your faith and Make God Known in the World (our 2025 Stewardship Theme). We invite you to give of your time and faith and to invite others to join you in the journey. We are looking for volunteers to create a minute of faith video that we can use in worship and our social media. We want to know how your participation in the life of CPC has helped you feel closer to God.

Get specific, be brief, and we'll take care of the rest. Maybe there was a moment in worship, or in a faith study, or in fellowship, or at a critical time in your life... where being a part of CPC really helped you in your life and faith in God. Maybe there have been several. Maybe it's just the way people or pastors have helped you. Whatever it is, we'd like to hear about it, help you share it, and invite others to experience it too by joining you in our congregation.

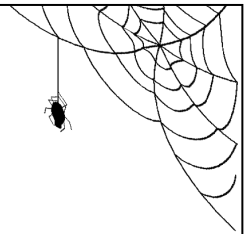
Contact Pastor Steve Melde to set up a time and space for you to share and be videotaped. PastorSteveMelde@gmail.com or through the church office (520-886-5535)

All Church Campus Work Day

February 1, 9 a.m. - 1 p.m.

Help us with projects around the campus such as:

- Organize the tool shop and outside landing
- Get the cobwebs around the building
- Tear out shelves and old water heater in bathrooms by choir room
- Refresh flower pots by cactus fountain (and along Broadway)
- Patch drywall in the office attic
- Pressure wash sidewalks
- Wash windows
- Oil squeaky hinges on doors
- Oil the wood in the Narthex entryway to the Sanctuary





CPC Missions **CORNER**

Beach Blanket Bee-Bop - Gaslight Theater

It's back! Save the date. Sunday, April 6, 3 p.m. Matinee. This is our annual fundraiser with proceeds going to Montlure Camp.

Tickets go on sale Sunday, January 26 on the patio before and after the 8:30 a.m. service. All tickets will be \$33 per person. Please pay in cash or check. Get your tickets early as three other Presbyterian churches begin sales on February 2. Ticket sales will continue until the theater sells out, which it always does!

Contact Claudia Howell for questions at 520-850-0637

Haven't filed your taxes yet? Your donation matters to Exodus Community Services and is a way to get a state tax break dollar-for-dollar credit on your state taxes (single filers, \$470; married \$938.) Exodus residents help with the heavy lifting at the Flea Market. Exodus Community Services provides a safe haven for individuals struggling with addiction. The program requires participants to find work, pay rent, attend 12-Step meetings, and get a sponsor. Arizona state funding is being cut, and Exodus Community Services could use our help. The Qualifying Charitable Organization (QCO) code for Exodus is 20079.

Market on the Move Saturday, February 1 **7 a.m. Volunteer Set-up 8-10 a.m. Sale**

Help CPC feed Tucson! On the first Saturday of the month (January-June) CPC will be a host site for Market on the Move. Rescued food from large distributors is sold to the public for \$10. It's a varied and large supply of fresh produce and whatever else is rescued. LOTS of people come to CPC for this monthly event. You're welcome to get in line and buy food, too.

ORRRRRR... you could come early and volunteer to help serve. Volunteers arrive at 7 a.m. to organize and set out the food for the day. Contact Cheryll for more information.

cdunafon@gmail.com

Congregational Care Corner



Congregational Care comes in many forms: spiritual, emotional, and physical.

The Coordinator for Congregational Care is Steve Brownson, who is always available to take your call. Here are the variety of ministries that CPC offers to give care and support to its members:

Pastoral Care (visits, calls, and prayers) Pastor Steve Melde and Steve Brownson visit congregants in their homes, the hospital, and other care facilities. Both Steves can be contacted by calling or texting them on their cell phones, emailing, or calling the church office and leaving a message.

The Compassion Connection Team are CPC members with hearts for ministering to those in need. Team members visit church members who can't attend worship and other church functions regularly due to ill health or physical challenges. They also send cards, call church members, and deliver home communion every month. The Compassion Connection Team is always looking for volunteers to join this ministry.

The CPC Prayer Chain is a prayer chain conducted by church deacons via email. You may request prayers for anyone for any reason that you may desire prayer, be it a spiritual, physical, or psychological concern. To request prayer, email cpctucsonprayers@gmail.com or contact Steve Brownson.

The CPC Prayer Shawl Ministry consists of church members who knit and crochet prayer shawls (for all ages and sizes), baby blankets, fleece shawls, and other similar items for church members. These knitted and crocheted items are blessed during worship services and presented to church members, their family, and friends of church members who are experiencing life challenges, such as a the loss of a loved one or illness. Prayer shawls may be requested by completing the Prayer Shawl Request form located in the office. Contact Steve Brownson or Pastor Melde if you need assistance requesting a prayer shawl.

Helping Hands Meals – There may be a time when you need help with meals following surgery or during an illness. If you would like to have an evening meal delivered for yourself and your immediate family, contact Steve Brownson or Pastor Melde who will then put out a request to the congregation for help. While there are no guarantees, this congregation has always been very generous in helping one another this way.

Needy Family Fund – Financial challenges pile up and are overwhelming, especially when we have a financial emergency. When that happens, CPC can provide help through its Needy Family Fund. If you need financial assistance, contact Pastor Melde or Steve Brownson.

Talk About it Tuesday

Tuesdays at Noon Zoom ID 839 0008 2868

Every Tuesday at Noon (Tucson Time) Pastor Steve hosts a Zoom conversation about the previous Sunday's worship and sermon theme. Join with others as we take our faith deeper.

Wednesday Message

Most Wednesdays Pastor Steve sends out a special email just for a little faith thought and inspiration in the middle of the week. This is a special group mailing, so if you would like to be a part of it, email him a request to be put on the Wednesday Message list:

PastorSteveMelde@gmail.com

Faith Filled Fridays

Each Friday at Noon (Tucson time), Pastor Steve broadcasts a few moments of faith and inspiration. Join him on any of our three broadcast sites (Just like Sunday mornings)

www.cpctucsonaz.org (scroll to the bottom of the homepage)

www.YouTube.com/cpctucsonaz

www.Facebook.com/ChristPresbyterianTucson

Because Pastor Melde will be away in February, the above opportunities will not be held but will return in March.



CPC's Book Club meets on the second Tuesday of each month. The next meeting is February 11 at 1 p.m. in the Patio Room. All are welcome.

February's selection is
The Memory of Lavender by
Aimke Runyan

Perhaps the secrets of her mother's past in this tiny French town hold the key to her own future. . .

Food critic Tempèsta Luddington has always felt like the odd person out in her family, ever since she lost her beloved mother at the tender age of thirteen. When her workaholic father passes fifteen years later, Tempèsta is not surprised that the majority of the considerable family money will pass to her dutiful younger brother, Wal. Still, she is left a modest remembrance from her mother, and for the first time Tempèsta has a world of choices before her.

Lost in grief and hoping to reconnect with her memories and her mother's past, she uses the money to buy a ramshackle manor house in Sainte-Colombe, a small village in Provence, where her mother had grown up. But she is greeted with more questions than answers. Her welcome, especially by the town's stodgy mayor, is cold at best, and she finds herself wondering if the entire experiment was a mistake.

Yet she stays, stubbornly sticking it out, slowly learning that her mother's legacy was more than just a nest egg. Through her mother and the village, Tempèsta learns the value of community and friendship, the importance of self-confidence, and the power of love and trust. What's more, she sees for herself that there is magic and beauty in the everyday—even something as simple as a sprig of lavender and sage

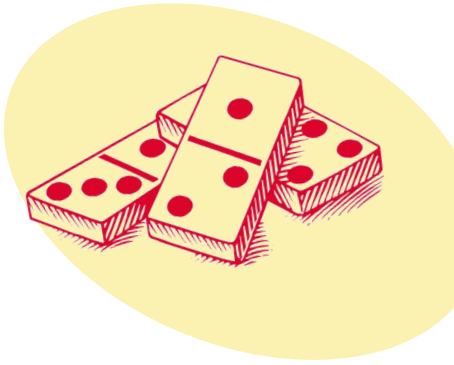
FELLOWSHIP

Mexican Train Dominoes

Join us on Wednesdays,
February 5 & 19
in A/B

Have fun playing this challenging game of dominoes. We will teach you!

First, third, and sometimes fifth Wednesday of the month.



Casa Maria Lunches

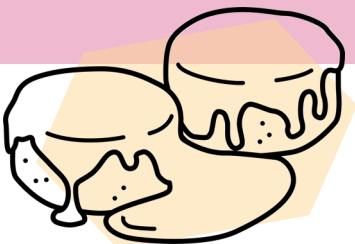
The Casa Maria Lunch Ministry meets the fourth Tuesday of each month to put together 200 lunches for the Casa Maria Soup Kitchen. If you would like to join them, contact Cindy at ridingsc@comcast.net. The next meeting is Tuesday, February 25, 8 a.m. in Fellowship Hall Kitchen. Drop off your sandwich donations in Fellowship Hall kitchen.



Men of Faith Breakfast

Wednesday February 19, 7:30 a.m.

All the men of the church are invited to gather for breakfast. This month we meet at CPC as John Arbuckle cooks his annual West Virginia Biscuits and Gravy breakfast.



Flea Market News

The final Secondhand Weekend for the 2025 Flea Market is here:



Saturday, February 8 is the LAST DAY donations will be accepted, 9 a.m. - 2 p.m.

Sunday, February 9, from 9 a.m. - 2 p.m. (processing day only)

And as our big event approaches rapidly, **volunteer recruiting begins on February 1**, in person at CPC and electronically through SignUp Genius. We promise our blessed volunteers great fellowship and a wonderful opportunity to welcome and invite the public to our fabulous church.

So, find us at the recruiting table on Sundays and receive a SignUpGenius email to select how you will help get CPC's biggest fundraising activity up and running.

Setup: We will need many volunteers from February 27 through March 12 to set up, unpack, lift, and stage merchandise.

Sale: From March 13 to 15, there will be a variety of positions and two shifts per day on the sale days. Please select as many as your schedule and abilities allow.

Cleanup: Finally, after all the fun is over, we'll need to tidy up starting on March 15 in the afternoon and continuing daily until we return the campus to its standard condition, no later than March 18. The task list is long, but many hands make for light work.

We also ask you to **help us share our social media posts and printed flyers**. They will get the word out and build enthusiasm. The flyers, available at CPC, can be given to friends, neighbors, and relatives, and they can be placed at shops you frequent- gyms, hairdressers, nail salons, grocery stores, libraries, and the list goes on.

Let's make this the biggest and best Flea Market to date! Oh, the difference we could make in so many lives!

Donation questions call or text: Claudia Howell at 520-850-0637.

General questions, call or text: Pam Cullop at 520-271-6678.

The Flea Market Lead Team
Pam Raines, Claudia Howell, Jan Marshall, & Pam Cullop

About Pink Pick-Ups Furniture Taxi

(520-268-5670). They are an independently owned moving company that will move your donations to CPC or your entire household to any location. The Flea Market Team hires them to store boxes after Secondhand Weekends and to do heavy lifting for the Flea Market each March. Since we don't collect donations, we encourage you to call the owner, Nathan Heuser for a free estimate. He charges hourly, with a one-hour minimum of \$125-\$150, depending on the volume and distance.

FLEA MARKET FOOD TEAM WANTS YOU!

The Food Team is looking for a few good women and men who want to provide food for our Flea Market volunteers: and we know that CPC has lots of good women and men. The dates are as follows:

Friday, February 28

Saturday, March 1

Sunday, March 2

On the above dates, we will be feeding 30-35 people.

Sunday, March 9, 25-30 people

Monday, March 10, 25-30 people

Tuesday, March 11, 30-35 people

Sunday, March 16, 25-35 people

Monday, March 17, 15-20 people

The lunch hour for each meal is 11:30 to noon. The meal should consist of an entrée and a dessert. It could be something that you prepare or food that you purchase. The possibilities are only limited by your imagination.

If you cannot work the flea market, you may want to consider providing a meal or two as your contribution. We need help to feed our volunteers, and we ask you to prayerfully consider helping with this important project. Please call Cheryll Dunafon (520-390-6427) or John Arbuckle (304-520-2217) to volunteer. Thank you.

Presbyterian Women of CPC

The Presbyterian Women's 'Crafty Ladies' are pleased to announce that we finished 2024 with an outstanding account balance, allowing us to provide funds to ministries (primarily in local areas) whose main focus is taking care of women and children in need. This year, we have \$7150 to donate which will be divided as follows:

Interfaith Community Services - \$500
Menaul Historical Library of the Southwest - \$150
Sister Jose Women's Center - \$1000
Frontera De Cristo - \$1000
TMM Family Services - \$500
Angel Heart Pajama Project - \$500
I Am You 360 - \$1000
Tucson Family Food Project - \$2000
Outlying Food Bank (possibly Sells, Ajo, or another community in dire need) - \$500

We are blessed by the continued support of our congregation throughout the year and the attendees of the annual Women's Advent Event. Our talented Crafty Ladies have created crafts at an elevated level. Bakers, under the leadership of Lianne Puzzo, continue to please and amaze everyone with their delicious contributions to sell during the annual Craft & Cookie Sale.

Thank you all – contributors and customers of this ongoing fundraiser for the PW Mission projects.

In the upcoming year, we hope sell seasonal crafts, sewn, items, and cards, on Communion Sundays from the Fellowship Hall as we did during October and November.

If you want to attend our meetings or purchase our crafts, we meet most Wednesdays from 9 a.m.-12 p.m., in north wing classroom A/B. New ideas and suggestions are always welcome. Breaktime is typically around 10:30 when we pause for a light snack and coffee or tea. This is a relaxed crowd of ladies who enjoy laughter and exchanging funny and heartfelt stories just as much as they do creating things. Join us some time and see if what we do is a good fit for you!

Please Note: The Crafty Ladies will not meet on March 5, 12, or 19, due to the annual Flea Market Sale and clean up.



Our February Birthdays!

3 Gordon Custis

5 Bob Powers

7 Steve Bryan

8 Juanita Garcia

8 Sheri Hopkins

9 Kendall Klym

11 Dawn Custis

11 Charlene Hower

12 Sally Lanyon

13 Vera Schlichter

14 Ken Byrum

14 Andrea Heck

14 Carolyn Monjoi

16 Jim Cech

16 Laurel Reilly

17 Darby Cech

18 Dale Stevens

19 Kean Nordbrock

19 Julia Potter

19 Ruth Richards

19 Doug Wingert

20 Clint Compton

21 Mary Jean Koch

21 John Yauch

22 Luke Nagele

22 Tammy Gonzales

24 Linda Tillema

25 Kathleen Graler

26 Dinah Bowers

27 Sherrie Sink

28 Cindy McNown Perry

28 Nancy Schneider

If we've missed your birthday,
please let us know.



PRESBYTERIAN WOMEN

Accepting donations of the following:

Ronald McDonald House: Pop tabs, disinfectant wipes, and chemo caps.

Lions Club Glasses: Lenses, frames and any glasses.



CHRIST PRESBYTERIAN CHURCH

6565 E. BROADWAY • TUCSON, ARIZONA 85710

Member of the Presbyterian Church (USA) & Presbytery de Cristo

The Rev. Steven P. Melde, Pastor
(PastorSteveMelde@gmail.com)

Steve Brownson, Coordinator of Congregational Care
(sbrownson52@gmail.com)

Robin Gilbert, Director of Children's Christian Ed
(robbert77@juno.com)

Luke Diamond, Director of Music
(La24diamondcpc@gmail.com)

Susan Simpson, Accompanist
(susanannsimpson@hotmail.com)

Stella Lopez, Office Manager
(office@cpctucsonaz.org)

Doug Wingert, Bookkeeper
(bookkeeper@cpctucsonaz.org)

Cathy Wade, Facility Monitor
(cawhaw421@gmail.com)

Tara Luther, Childcare
(tlbohrer17@yahoo.com)



Church Office Hours

Monday - Friday 9 a.m. - 3 p.m.

(Closed for lunch 12 - 1 p.m.)

Phone: 520-886-5535

www.cpctucsonaz.org

Deadlines

KIVA March 2025

Articles due by 12 p.m. on Friday,
February 14, 2024

**Weekly Bulletins and Friday
News, requests for flyers or
inserts**

Please submit your articles and
requests by **Wednesday at
noon!**



Facebook.com/ChristPresbyterianTucson



Twitter, Snapchat, Instagram, Youtube:
@CPCTucsonAZ