

# KIVA

## NEWSLETTER

May 2025



# Sunday Worship

Join us every Sunday, in person, or online to celebrate God's grace in worship. CPC welcomes all in worship, including children. Blue bags containing activities for them are available. We also offer professional childcare in our nursery.

Online Sources:

[www.cpctucsonaz.org](http://www.cpctucsonaz.org) (scroll to bottom of homepage)

[www.Facebook.com/ChristPresbyterianTucson](https://www.Facebook.com/ChristPresbyterianTucson)

[www.YouTube.com/cpctucsonaz](https://www.YouTube.com/cpctucsonaz)

**8:30 a.m.** Sundays in/from the Fellowship Hall

Music led by the Band

**10:45 a.m.** Sundays in/from the Sanctuary

Music led by the Choirs

**May 4:** Communion

Join us as the Rev. Dr. Brad Munroe leads  
(Presbytery Pastor)

Liturgist: Susan Simpson

**May 11:** Mother's Day and Celebrate the Gifts of Women

Scripture: John 19:25b-27

Sermon: The Church And Moms (video by Pastor Melde)

Liturgist: Fred Hubbard

**May 18:** Graduation/Youth Sunday

Liturgist: The Youth of CPC

**May 25:** Memorial Day Weekend Celebration

9:30 a.m. One Service

Musical Celebration led by the Choir and special  
instrumentalists

Remembering Our Military Service Loved Ones

Remembering the Saints of CPC

## *Memorial Day Weekend Worship*

On Sunday, May 25<sup>th</sup>, we will celebrate worship in a special way and time. We will gather for one service only at 9:30 a.m. Our Choir will be leading us in a memorable musical worship experience as we honor Memorial Day and the men and women who have served in the U.S. Military and who have passed away.

You are invited to email us a picture of your loved one (who has passed away and served in the military). Photos must be submitted by Monday, May 19<sup>th</sup>, to be included in the worship slide presentation. In the email, attach the photo, give us the name and military rank, and your relationship to the deceased. Send them to: [PastorSteveMelde@gmail.com](mailto:PastorSteveMelde@gmail.com)

This will be a worship service that is best experienced in person. We will broadcast online, but the sights and sounds won't be as good online. So, if you are can, join us in person.

We will also be honoring the Saints of Christ Presbyterian Church who have passed away since the last Memorial Day.

### *Potluck May 25th*



Join us after worship for an all-church potluck. CPC's Worship Team will have chicken (both baked and fried) for all of us, and **you are asked to bring a side dish or dessert to feed 12-15 people.**

Let's have some Memorial Day Weekend fun together: Sunday, May 25<sup>th</sup>, following the 9:30 a.m. service.

This is a great day and event to invite your friends to join you. Introduce them to Christ Presbyterian Church and our church family. Invite them to sit it with you in worship, introduce them to others, and join you at your table during the potluck.



# Greetings and Happy Spring!

Beginning on May 25, there will be one worship service at 9:30 a.m. until August, when the two-service schedule resumes. The folks who regularly attend our Sunday morning Adult Education offerings need to decide: Are we going to meet at 8:30 a.m.? Or 10:30 a.m.? Or are we going to take a summer-long break from our classes?

The Bible Study folks continue to forge ahead with their in-depth study of Revelation. Bonnie Sloan reports that they will most likely be digging into Revelation through the summer months. And if I know anything about this group, I know they will choose to continue meeting through June and July.

Journeys in Faith (JIF) has one leader only (me!), so my vacation time will dictate when we have classes. To that end, there will be no JIF in July. I hope we can meet at 8:30 a.m. on the other Sundays as this class is one of the highlights of my week, every week.

Here is the JIF schedule for May:

May 4 - No JIF - Lesley on vacation

May 11 - Our Border with Mexico

May 18 - Ten Commandments (Revisited)

May 25 - A Great Sermon About Christian Nationalism

**JIF Zoom ID 868 3291 1992**

I do hope we will all continue to meet as our schedules allow.

Shalom,  
Pastor Lesley

# Sunday Funday

The last day for the Sunday Funday schools will be May 18th. We will return on August 3rd with our annual kick-off activities for the whole family, and our new rotations will start on August 10th. Have a great summer!

## Summer Camp



### CPC's Summer Camp

Join us for Power Lab Summer Camp as we discover Jesus' Miraculous Power, 9 a.m.- noon, June 30- July 3 at CPC. It is open to children entering kindergarten to 6th grade. Youths in 8th grade and older are encouraged to volunteer to help run activities. The cost is \$15 for the four days. Please use this link to sign up:

[signupgenius.com/go/9040F4EABAD2AABF58-55773572-power](https://signupgenius.com/go/9040F4EABAD2AABF58-55773572-power)

### Other Camps:

Immanuel Presbyterian Church is hosting a VBS for pre-k through 6 graders June 9 -13th from 9 a.m. - noon. Please visit their website for more information. [www.immanuelpc.org](http://www.immanuelpc.org)

### Montlure Overnight Camp

For children and youth 4th grade through 12th grade. Montlure is an amazing experience for growing your faith as you connect with others in a beautiful location. Visit their website for camp dates, prices, scholarship information, and to register. CPC also offers some scholarships to help our children and youth attend. If you would like to help someone attend camp, please contact Ms.

Robin. <https://www.montlure.org/overnight-camp/>

**We're looking for a few awesome volunteers** to help make the Montlure camp magic happen. Right now, we need: Dispatchers – Just a quick 2-hour commitment; Bus Chaperones – A full-day adventure that's totally worth it! Ask any camper and you'll find camp really begins and ends on the bus. So, grab a friend, hop aboard, and make it a road trip to Greer! (You'll even get a tour of the Montlure site, which reopened last summer.) Sign up here: <https://signup.com/go/wvUcxOf>

The dates are June 8, 13, 16, 21, 23, 28 and July 7 & 11

# Welcome our New AV Coordinator

As of June 1<sup>st</sup>, we will welcome our new AV Coordinator, Steve Brownson.

We all know Steve as our Coordinator of Congregational Care, but he is stepping away from that position to take on the role of coordinating our Sunday worship AV systems. This will be a transition for all of us.

As of June 1<sup>st</sup>, we will no longer call on Steve Brownson for pastoral care and visitation. He will be prepping the Sunday projection and overseeing all the broadcasting of our worship, as well as all the lighting and sound for in-person worship.

We are very excited about this new adventure. Steve Brownson knows us, worship at Christ Presbyterian, and our system and has been learning more about it all behind the scenes since the beginning of the new year.

Steve will be working part time, once during the week, and also on Sunday mornings. This will allow Steve to enjoy more of his retirement, and still be connected to and leading us at CPC.





**We are looking for volunteers to help out on Sunday mornings in our AV booths.** If you might be willing to receive some training on running lights, sound, and projection, please contact Steve Brownson through the church office or email: [Sbrownson52@gmail.com](mailto:Sbrownson52@gmail.com)

Pastor Melde will continue to receive pastoral calls and emergencies and will step into helping lead our Compassion Connections Team. Personnel will be working with him to make sure other duties and things he does are changed to release more time for visitations and pastoral care of our congregation. You can contact him through the church office, or in an emergency on his cell phone. The church will send that out to the church directory.

## THANK YOU!

The Veterans Administration Staff was overwhelmed by Christ Presbyterian Church's generous support of the Southern Arizona Patriot Pantry. Several folks stayed to help box up the items after Easter services; others helped deliver the 25 boxes on April 21. More details on the donations will be provided soon.



# Congregational Care Corner



Congregational Care comes in many forms: spiritual, emotional, and physical.

The Coordinator for Congregational Care is Pastor Steve Melde, who is always available to take your call. Here are the variety of ministries that CPC offers to give care and support to its members:

**Pastoral Care** (visits, calls, and prayers) Pastor Steve Melde visits members in their homes, the hospital, and other care facilities. Pastor Steve can be contacted by calling or texting him on his cell phones, emailing, or by leaving a message at the church office.

**The Compassion Connection Team** are CPC members with hearts for ministering to those in need. Team members visit church members who can't attend worship and other church functions regularly due to ill health or physical challenges. They also send cards, call church members, and deliver home communion every month. The Compassion Connection Team is always looking for volunteers to join this ministry.

**The CPC Prayer Chain** is a prayer chain conducted by church deacons via email. You may request prayers for anyone for any reason that you may desire prayer, be it a spiritual, physical, or psychological concern. To request prayer, email [cpctucsonprayers@gmail.com](mailto:cpctucsonprayers@gmail.com) or contact Steve Melde.

**The CPC Prayer Shawl Ministry** are church members who knit and crochet prayer shawls (for all ages and sizes), baby blankets, fleece shawls, and other similar items for church members. These knitted and crocheted items are blessed during worship services and presented to church members, their family, and friends of church members who are experiencing life challenges, such as the loss of a loved one or illness. Prayer shawls may be requested by completing the Prayer Shawl Request form located in the office. Contact Pastor Melde if you need assistance requesting a prayer shawl.

**Helping Hands Meals** – There may be a time when you need help with meals following surgery or during an illness. If you would like to have an evening meal delivered to you and your immediate family, contact Pastor Melde. They will put out a request to the congregation for help. While there are no guarantees, this congregation has always been very generous in helping one another this way.



## Talk About it Tuesday

### **Tuesdays at Noon** Zoom ID 839 0008 2868

Every Tuesday at Noon (Tucson Time) Pastor Steve hosts a Zoom conversation about the previous Sunday's worship and sermon theme. Join with others as we take our faith deeper.

## Wednesday Message

Most Wednesdays Pastor Steve sends out a special email just for a little faith thought and inspiration in the middle of the week. This is a special group mailing, so if you would like to be a part of it, email him a request to be put on the Wednesday Message list:

PastorSteveMelde@gmail.com

## Faith Filled Fridays

Each Friday at Noon (Tucson time), Pastor Steve broadcasts a few moments of faith and inspiration. Join him on any of our three broadcast sites (Just like Sunday mornings)

[www.cpctucsonaz.org](http://www.cpctucsonaz.org) (scroll to the bottom of the homepage)

[www.YouTube.com/cpctucsonaz](http://www.YouTube.com/cpctucsonaz)

[www.Facebook.com/ChristPresbyterianTucson](https://www.Facebook.com/ChristPresbyterianTucson)

The above activities will resume the week of May 13th when Pastor Melde returns from vacation.

## ***MARKET ON THE MOVE*** **SATURDAY, May 3, 7 - 9 A.M.**



Produce and other items rescued from large distributors are sold to the public for just \$10!

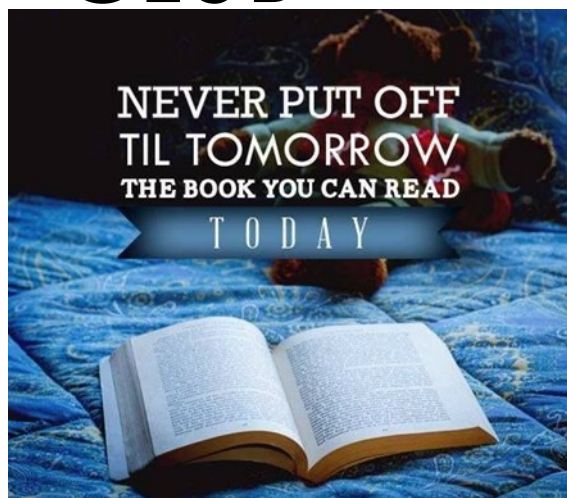
Come to buy or come to help on Saturday, April 5th as we host another Market on the Move.

**6 a.m. Volunteers** arrive in the north parking lot (under the solar structure) to set up and organize the fresh produce that will be distributed for the day.

This will be the last one of the season.

# FUN BOOK CLUB

and

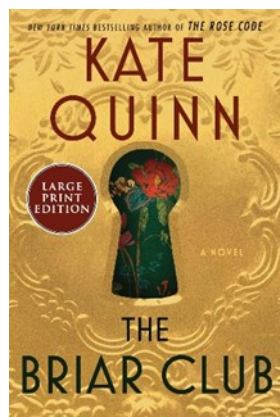


Adult Education is proud to re-launch the CPC BOOK CLUB – Zoom version.

We know that some of our Winter Residents and/or those with mobility limitations love to read. And we know that our local folks are always looking for ways to be engaged with one another.

We take our new Mission Statement seriously: “The purpose of Christ Presbyterian Church is to help people build a relationship with God through Jesus Christ, and grow in faith, whether in person **or online.**”

We’re hoping that more of you will choose to participate in the CPC Book Club if we move it online. From now on, we’ll meet virtually on the third Tuesday of every month, giving everyone a longer chance to read the book once the announcement comes out in the monthly Kiva.



On May 20, at 1:00 p.m., we’ll meet via Zoom to discuss *The Briar Club* by Kate Quinn. It’s the story of a Washington DC boardinghouse and the people who live there during the 1950s paranoia of the McCarthy era. It’s about how friendships form and fray, with a great mystery at its center. To enter the meeting, download Zoom onto your computer, tablet, or phone. Open Zoom and enter the Meeting ID: 813 6830 2106. This will be the same ID for each meeting.

# FELLOWSHIP



## MEN OF FAITH BREAKFAST

**Wednesday May 21, 7:30 a.m.**

All the men of the church are invited to gather for breakfast. We meet on the third Wednesday of each month at Biscuits Café at 7026 E. Broadway Blvd. We pay our own way and have a lively faith discussion.

## CASA MARIA LUNCH MINISTRY

The Casa Maria Lunch Ministry meets the fourth Tuesday of each month to put together 200 lunches for the Casa Maria Soup Kitchen. If you would like to join them, contact Cindy at [ridingsc@comcast.net](mailto:ridingsc@comcast.net).

The next meeting is Tuesday, May 27, 8 a.m. in Fellowship Hall Kitchen. Drop off your sandwich donations in Fellowship Hall Kitchen.



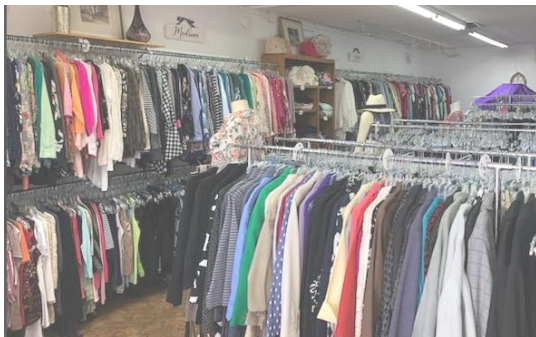
## MEXICAN TRAIN DOMINOES

Join us on Wednesdays, May 7 & 21 in A/B

Have fun playing this challenging game of dominoes. We will teach you! We meet on the first, third, and sometimes fifth Wednesday of the month.



## CPC Missions **CORNER**



**Eagles Wings of Grace.** Over the past 10+ years, Nancy Schneider has volunteered at Eagles Wings of Grace, which provides clothing to women to improve their lives. Six to eight women, referred by over 70 local non-profit groups, are scheduled five days a week to receive one-on-one help finding the clothing they need to move forward. Donations are plentiful and are reviewed for appropriate items. Other items are sent to Big Brothers/Big Sisters. Each item is sprayed, hung up, and steamed before it goes out on the floor.

Eagles Wings has one paid staff member and is looking for volunteers to help in various ways. Nancy steams for three hours each Friday. If you have two or three hours of free time, more volunteers are needed, and your help would be greatly appreciated. Nancy would love to discuss why she enjoys volunteering at Eagles Wings and gladly give you a tour of the space.



Eagles Wings of Grace is located at 2925 N. Country Club and is open for sales to the public on Thursday with prices between \$5 and \$10 for boutique items.

Contact Nancy for more info:  
[nancyss@cox.net](mailto:nancyss@cox.net) or  
520-954-5704.



# Flea Market News

## The 2025 Flea Market Recipient Check Presentations

During the May 25 Sunday service, when we celebrate Memorial Day, representatives from the following organizations will receive a check from the 2025 Flea Market Profits:

Tucson Family Food Project  
Candlelighters  
Courtney's Courage  
Montlure Camp

## 2026 Collections and Secondhand Weekends Resumed!

Due to Mother's Day falling during the second week of **May**, we will meet to sort and price on May 17 & 18.

Secondhand volunteer schedules:

**Saturday: 9 a.m. - 2 p.m.** Lunch provided. Donations accepted until 2 p.m.

**Sunday: 9:30 a.m. - 2 p.m.** Lunch provided. Donations accepted until 12 p.m. to allow for processing by the end of the day.

Beginning this year, we are hoping to find volunteers who will be willing to participate in Secondhand Weekends by feeding the volunteers lunch. If you want to help or learn more, please contact our meal coordinator Janis Parks, 520-403-4526.

**Donation questions: Claudia Howell 520-850-0637.**

**General Flea Market questions: Pam Cullop 520-271-6678.**

## Pink Pick Ups Furniture Taxi

Pink Pick Ups Furniture Taxi is an independently owned moving company. The Flea Market Team hires them to store boxes after Secondhand Weekends and to work at the Flea Market each March. Since we don't collect donations, consider calling owner Nathan Heuser for a free estimate. He charges hourly, with a one-hour minimum of \$125-\$150, depending on the volume and distance. Call: **520-268-5670**

# Presbyterian Women of CPC

## Craft News

The Craft Group meets regularly each Wednesday, from 9 a.m.-noon, in classrooms A/B. No one is required to attend the full three hours, nor each meeting. We meet to enjoy fellowship, lots of laughter, and share stories while doing something crafty to pass the time. We break around 10:30 for a light snack or to celebrate a birthday for one (or more) of our group. You are free to bring a craft or sewing project of any type you might like to work on, or help color the hand-stamped cards, or even create others from recycled cards we have on hand... the list of projects is only limited by one's imagination.

The Crafts Group is the fundraising branch of the PW for Christ Presbyterian Church. All the profits generated by this group are donated to various organizations, mainly to those who support women and children.

If you want to buy something from our collections, you can do so during our Wednesday meetings. We will also have seasonal crafts to sell before and after the first service on most Communion Sundays in the Fellowship Hall. The next Communion Sunday is May 4.

Mother's Day (May 11 this year) is the day that CPC sets aside to celebrate the Presbyterian Gifts of Women with a special combined offering that includes a Birthday, a Thank Offering, and the Gift Offering. This special offering, which is approved by two national-level Presbyterian synods, is used for women in need or crisis both locally and nationally. On that Sunday, you will find a few "Gifts of Women" envelopes on each table in the fellowship hall, and on most pew seats around the sanctuary if you wish to contribute. Of course, as with all donations, you can remit electronically or by mail, and reference PW Gifts of Women with your gift.

So, if you would like to spend an enjoyable morning with women who like to laugh while they craft, sew, fold paper, bead, color cards, and more, consider stopping by some Wednesday to see if you would like to join us.

For questions, call or text Pam Cullop: 520-271-6678 or email: [pjcullop@gmail.com](mailto:pjcullop@gmail.com).





# Our May Birthdays!

1 Christi Friskey  
1 Lynda Hendrell  
2 Lynn Price  
3 Judy Hamlet  
4 Tracie Couzens  
9 Joy Childress  
11 Chuck Hummel  
11 Ann Larrabee  
12 Claudia Howell  
12 Bob Jones  
14 Skip Werner  
16 Elaine Murphey  
16 Kenda Parkey  
17 Phil Puzzo  
18 Stephanie Hernandez

19 Justin Friskey  
19 Linda Carpenter  
21 George Alford  
21 Debby Anderson  
21 Craig Hagood  
22 Lisa Robinson  
24 Isaac Harroun  
28 Ben Thurston  
28 Pamela Hershey  
29 Amy Harroun  
30 Laura Bradley  
30 Jeff Hahn  
30 Linda Ffolliott  
31 Kathi Rector



If we've missed your birthday,  
please let us know.



## PRESBYTERIAN WOMEN

### Accepting donations of the following:

Ronald McDonald House: Pop tabs, disinfectant wipes, and chemo caps.

Lions Club Glasses: Lenses, frames and any glasses.



# CHRIST PRESBYTERIAN CHURCH

6565 E. BROADWAY • TUCSON, ARIZONA 85710

**Member of the Presbyterian Church (USA) & Presbytery de Cristo**

**The Rev. Steven P. Melde, Pastor**  
(PastorSteveMelde@gmail.com)

**Steve Brownson, AV Coordinator**  
(sbrownson52@gmail.com)

**Robin Gilbert, Director of Children's Christian Ed**  
(robbert77@juno.com)

**Luke Diamond, Director of Music**  
(La24diamondcpc@gmail.com)

**Susan Simpson, Accompanist**  
(susanannsimpson@hotmail.com)

**Stella Lopez, Office Manager**  
(office@cpctucsonaz.org)

**Doug Wingert, Bookkeeper**  
(bookkeeper@cpctucsonaz.org)

**Cathy Wade, Facility Monitor**  
(cawhaw421@gmail.com)

**Tara Luther, Childcare**  
(tlbohrer17@yahoo.com)



## Church Office Hours

Monday - Friday 9 a.m. - 3 p.m.

(Closed for lunch 12 - 1 p.m.)

**Phone: 520-886-5535**

**[www.cpctucsonaz.org](http://www.cpctucsonaz.org)**

## Deadlines

**KIVA** June 2025 articles due  
by 12 p.m. on Friday, May 16,  
2025

**Weekly Bulletins and Friday  
News, requests for flyers or  
inserts**

Please submit your articles and  
requests by **Wednesday at  
noon!**



**[Facebook.com/ChristPresbyterianTucson](https://www.facebook.com/ChristPresbyterianTucson)**



**Twitter, Snapchat, Instagram, Youtube:  
@CPCTucsonAZ**