

SAGEMONT
CHURCH

BUDGET

2025 - 2026

A LETTER FROM PASTOR LEVI

Dear Sagemont Church Family,

We stand on the cusp of a new fiscal year, and I am filled with gratitude for each of you—your faith, your generosity, and your unwavering commitment to the mission God has placed before us. Together, we have seen His hand at work in remarkable ways, and I am excited to share with you our vision for stewardship in 2025-26. This is not just a budget; it's a bold step forward into the incredible opportunities God is preparing for us!

Looking back, 2024-25 has been a testament to His faithfulness. Through your prayers and support, we've welcomed new faces into our family, served our community, and focused on taking our next steps in following Jesus. Now, as we plan for 2025-26, we're dreaming big—because we serve a God who does exceedingly abundantly more than we could ever ask or imagine!

Our proposed budget for 2025-26 reflects a season of vibrant ministry. It's a plan to nurture our children and youth with programs that spark faith and joy, to expand our outreach so more people can experience the love of Jesus and hear His Good News, and to strengthen our worship and discipleship opportunities right here at Sagemont. We're investing in resources to equip our volunteers, enhance our facilities, and ensure that every ministry thrives as we shine His light brighter than ever before.

I am confident that as we step into this season together, He will supply every need according to His riches in glory. Your generosity has always been the heartbeat of this church, and I am so encouraged by the way you give—not just of your resources, but of your time, talents, and prayers.

I invite you to join us as we celebrate what's ahead, ask questions, and pray over this mission. Let's lift this budget up to the Lord with expectation, knowing that He is already paving the way for great things in our midst!

Thank you for being the vibrant, faithful family that makes Sagemont Church a beacon of hope. I can't wait to see what God does through us in this next chapter. Together, let's embrace this season with enthusiasm and unity, ready to see His kingdom grow!

With joy and anticipation,



Pastor Levi



WORSHIP is at the heart of Sagemont Church as we gather together to meet with Jesus.

This section of our budget supports the ministries that make our gatherings possible and impactful: **COMMUNICATIONS, MUSIC, PRODUCTION**, and **ONLINE**. From inspiring worship music and dynamic teaching to seamless audiovisual production and digital outreach, these ministries work together to create meaningful, spirit-filled experiences—whether in-person or online.

Your generosity ensures that we can continue to help people take their **NEXT STEP** following Jesus.



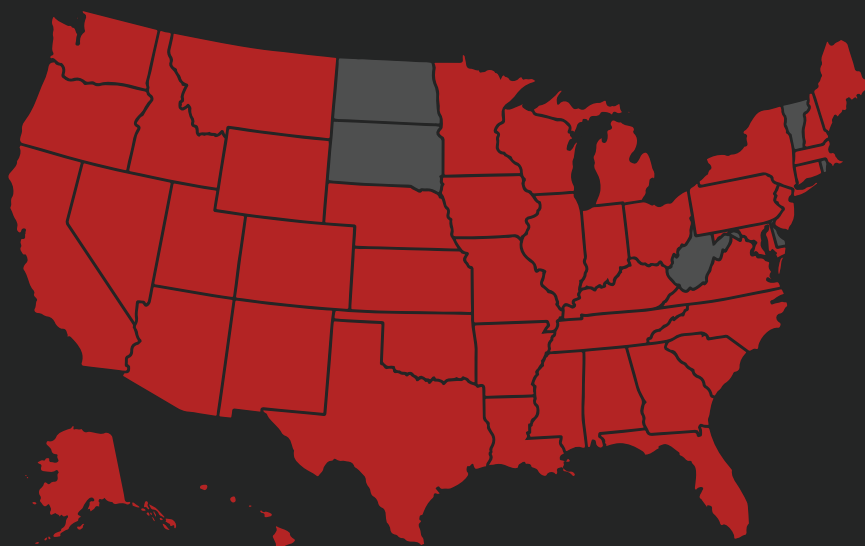
 **3,866**

WEEKLY IN-PERSON ATTENDANCE

44 STATES
WITH ONLINE VIEWERS
EACH WEEK


657

AVERAGE WEEKLY
ATTENDANCE
GROWTH



24 COUNTRIES
WORLDWIDE
WITH ONLINE VIEWERS
EACH WEEK

867
LIVESTREAM
WORSHIP
DEVICES*

10
ONLINE
SMALL
GROUPS

1,474
ESTIMATED
ONLINE
VIEWERS*

4,099
LIVESTREAM +
ON-DEMAND
VIEWERS*

* PER WEEK

WORSHIP - \$1,823,748

'25-'26 BUDGET - \$14,300,000



We were created for community, and our **CONNECT** ministries help people plug into life-giving relationships.

Through **CONNECT GROUPS, MEN'S, WOMEN'S, 55+, COLLEGE, STUDENTS, KIDS, and FAMILY MINISTRIES**, we provide opportunities for every age and life stage to build meaningful connections, grow in faith, and support one another.

Your generosity makes it possible for people to take their **NEXT STEP** and find belonging, encouragement, and spiritual growth.



CONNECT GROUPS

1,378 Average Weekly Attendance



VBS (Vacation Bible School)



1,150 ATTENDANCE



30 SALVATIONS



554 FIRST TIME GUESTS



100+ BIBLES GIVEN OUT

2025 IN ATTENDANCE

172 GOSPEL CONVERSATIONS



JOURNEY



385 STUDENTS ATTENDED

35 HOST HOME FAMILIES

21 SALVATIONS

53 BABIES DEDICATED



COFFEE HOUSE EVENT

104 FRIENDS INVITED

17 SALVATIONS



CONNECT - \$2,633,856

'25-'26 BUDGET - \$14,300,000

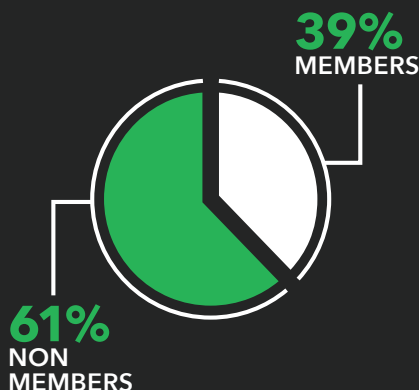
Discipleship is at the core of our mission, and our **GROW** ministries train disciples to make disciples.

Through **COUNSELING**, the **EXECUTIVE PASTORS**, the **LEAD PASTOR**, and **PASTORAL CARE**, we provide spiritual guidance, leadership training, and pastoral support to nurture a thriving church family.

Your generosity helps develop strong leaders, care for those in need, and create opportunities for deeper spiritual growth, helping people take their **NEXT STEP** following Jesus.



6,976
COUNSELING
SESSIONS



750 NEW
COUNSELING
CLIENTS

[11% of sessions]



Counseling outreach extends to **31 LOCAL CHURCHES** that send people for counseling.

2,054

benefitted from benevolence
(29% of sessions)

2,855

attended a Support Group

225

GROW GROUP
PARTICIPANTS



1,511

VOLUNTEERS
SERVING



1,803

MIDWEEK PARTICIPANTS

GROW - \$2,165,885

'25-'26 BUDGET - \$14,300,000

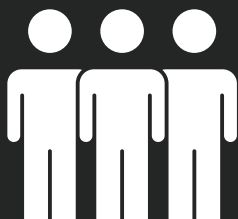


Through **GO**, we are called to be the hands and feet of Jesus, reaching beyond our walls to serve the body, share the Gospel, and support His mission.

MISSIONS, HELPING HANDS, HOSPITALITY, MOBILIZATION, and SPANISH MINISTRIES help provide care for those in need, extend hospitality to newcomers, and take the Gospel into our community and beyond.

Your generosity fuels these efforts, enabling us to make a tangible impact for Christ—both locally and globally.

3,626
FIRST-TIME GUESTS



506
NEW MEMBERS

469
TOTAL BAPTISMS



2,251
FOOD BOXES
DISTRIBUTED



1,355
BACKPACKS
DISTRIBUTED



409
FAMILIES
RECEIVED
CLOTHING

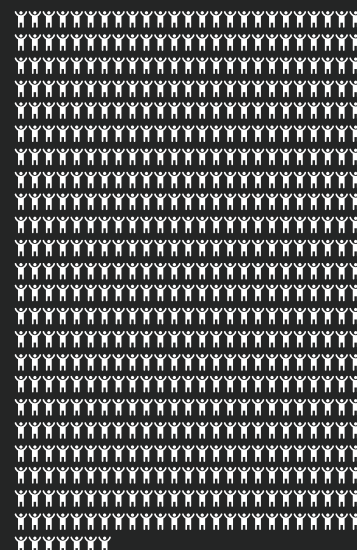


131
FINANCIAL
REQUESTS
FULFILLED

DISCOVER
SAGEMONT
LUNCH

ATTENDEES

568



743
SALVATIONS

10 MISSION TRIPS
149

people going
on Mission Trips



INTERNATIONAL
CHURCH
PLANTS

\$100,000

NATIONAL
CHURCH
PLANTS

\$200,000

SBC
COOPERATIVE
PROGRAM

\$300,000

GO - \$1,520,848

'25-'26 BUDGET - \$14,300,000

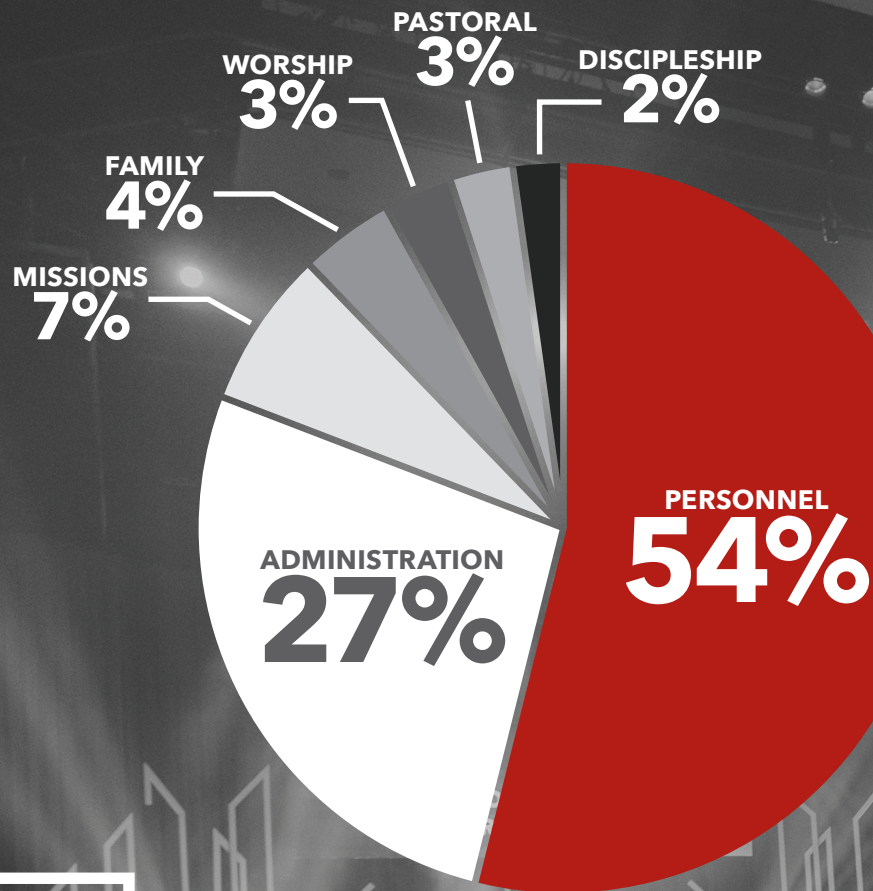
BUDGET COMPARISON

2024-25

2025-26

MISSIONS	\$ 953,009	\$ 955,689
1000 Missions	\$ 657,135	\$ 657,607
1100 Mobilization	\$ 100,000	\$ 100,000
1500 Spanish Ministry	\$ 63,170	\$ 63,455
3100 Helping Hands	\$ 132,704	\$ 134,627
PASTORAL MINISTRIES	\$ 356,799	\$ 356,112
1200 Lead Pastor	\$ 130,000	\$ 127,545
1300 Sr. Exec Pastor Discipleship / Worship	\$ 83,670	\$ 47,941
1400 Sr. Exec Pastor Outreach / Operations	\$ --	\$ 24,360
3200 Pastoral Care	\$ 28,694	\$ 25,189
3300 Counseling Center	\$ 114,435	\$ 131,077
DISCIPLESHIP / ADULT	\$ 249,214	\$ 265,345
1700 Discipleship Ministry	\$ 80,795	\$ 83,283
1742 Men's Ministry	\$ 44,150	\$ 34,074
1745 Online Ministry	\$ --	\$ 20,449
2200 Women's Ministry	\$ 34,809	\$ 29,730
2300 Senior Adult Ministry	\$ 10,390	\$ 7,441
3000 Hospitality / Membership	\$ 79,070	\$ 90,368
FAMILY MINISTRIES	\$ 597,414	\$ 605,453
2400 Family Ministry	\$ 9,205	\$ 1,299
2450 Preschool	\$ 14,000	\$ 15,000
2500 Mother's Day Out	\$ (8,390)	\$ (4,921)
2560 Childcare	\$ 143,868	\$ 211,649
2600 Kid's Ministry	\$ 150,784	\$ 125,047
2700 Student Ministry	\$ 196,322	\$ 199,568
2800 College Ministry	\$ 91,625	\$ 57,811
WORSHIP MINISTRIES	\$ 407,265	\$ 402,729
3400 Worship Music	\$ 197,200	\$ 190,179
3550 Communications	\$ 123,005	\$ 124,186
3900 Worship Production	\$ 87,060	\$ 88,364
ADMINISTRATION	\$ 11,036,299	\$ 11,714,672
3602 Cafe	\$ (38,633)	\$ (42,713)
3605 Library	\$ 10,445	\$ 7,607
3610 Landscaping	\$ 138,750	\$ 138,720
3615 Security	\$ 349,250	\$ 373,454
3625 Information Technology	\$ 210,619	\$ 235,370
3630 Capital Expenditures	\$ 100,000	\$ 600,000
3636 Facilities	\$ 2,490,951	\$ 2,293,971
3650 Admin Conferences	\$ 10,800	\$ 7,427
3670 Admin Meetings	\$ 10,560	\$ 6,610
3680 Admin Office	\$ 355,316	\$ 347,610
3700 Danbury Lodge	\$ 81,632	\$ 69,220
3800 Personnel	\$ 7,316,609	\$ 7,677,396
TOTAL EXPENSES	\$ 13,600,000	\$ 14,300,000

2024-25



**BUDGET
BREAKDOWN**

2025-26

