

FBC Allen

Church Profile

PREPARED BY
Pastor Search Committee

LAST REVIEWED ON
09/24/2024

Overview

FBC Allen is not an institution or a building. Our church is a gathering of people seeking to know, love, obey and make known our Lord and Savior Jesus Christ. Our biblical mission sometimes involves gathering together inside our walls for spiritual growth, encouragement, prayer, and fellowship. Sometimes that biblical mission calls us outside our walls to care and share the Good News of Jesus in our community and to the ends of the earth. The identity of a church is found in the beliefs and actions of its people.

MISSION	We are a fellowship of believers under the authority of God’s Word, following Jesus’ example, living in the power of the Holy Spirit, seeking to make disciples of all nations.
STRATEGY	Our desire is to create spiritual environments and opportunities for the development of fully devoted followers of Christ.

Core Values

Biblical Authority	The Bible is our guidebook for living in relationship to God and our plumb line for measuring our approach to life and ministry. (2 Timothy 3:15-17)
Exclusivity of Christ	Salvation is by grace through faith in Christ alone. (John 14:6)
Power of Prayer	Prayer must be the first, last and constant activity in every area of our lives and in our church. (Colossians 4:2)
Grace-Filled Community	Christ-followers grow best in the context of committed relationships to one another. (Hebrews 10:24-25)

Doctrinal Statement: First Baptist Church Allen affirms the doctrinal statement of the Southern Baptist Convention, *The Baptist Faith & Message*, as adopted by the SBC in 2000.

Church History

The origins of First Baptist Church Allen can be traced back to 1878, when a small group of 48 charter members met at the schoolhouse near the Allen train station with Reverend E.S. Haynes as the first pastor. By 1880, the first meeting was held in a newly consecrated church building on the site of today's worship center.

Under the leadership of Reverend T.C. Jester, the church built the first of its brick structures. That building stood until 1956 when it was demolished to build a new sanctuary that faced West on Birch Street. In January 1966, under the leadership of Pastor Leon Chumley, ground was broken for a two-story education building that was used mainly for children but that has since housed a youth center, church offices and now provides space for special friends, offices and adult classrooms.

In 1969, FBCA called Dick Center as pastor. He and a part-time secretary were the only employees of the church. In 1978, under Center's leadership, FBCA built another building meant to serve as an interim sanctuary and education building. In 1985, the children's building was constructed. Sadly, the Birch Street building, which served the congregation for almost 40 years and held so many memories, burned before Christmas in 1994, thus making the interim sanctuary the main worship Center for another six years.

In 1997, FBCA called Chad Selph to serve as its 40th pastor. Chad's tenure was marked by significant growth in membership, acquisition of property and expansion of facilities, including the current worship center in 2001 and renovation of the fellowship hall and children's buildings in 2003. His faithful service ended in December 2023 as the Lord called him home following a long illness.

Today, the church campus comprises approximately 14 acres of land, and FBCA is one of the largest landowners in Allen's Central Business District. The baptismal garden was completed in 2008 as part of the church's bridge to the future plan along with additional parking along Cedar Street. In 2010, Building E was renovated for use by our Senior Adults ministry.

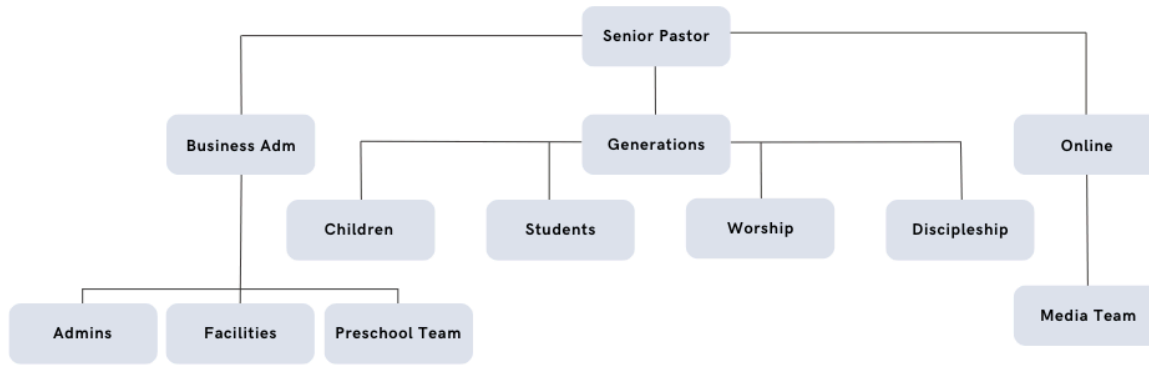
FBCA is strategically positioned for growth in ministry to future generations. We engage in Kingdom work locally through affiliations with the Baptist General Convention of Texas, Collin County Baptist Association, Mission churches that meet on our campus, and the Allen Ministerial Alliances. FBCA is a member of the Southern Baptist Convention. Additionally, FBCA partners with international non-profit organizations such as Compassion International and Samaritan's Purse.

We believe that the 48 pioneers who planted our church would be pleased that what they enthusiastically began in 1878 to strengthen and support the believers in Allen has been a place hope and worship for nearly 150 years. Our city has grown dramatically, but the Gospel remains the same timeless and hope-filled message of Jesus' victory over sin and death and the advance of His Kingdom.

The deep roots and long history of FBCA are a testament to our ongoing commitment to being visibly active in serving the community. The church's leadership and members desire to be a place where people commit to serving Christ and His Kingdom. We envision a future of disciples making disciples for His glory.

Ministries Overview

Organizational Chart



Preschool & Children's	Youth	Special Friends	Adults	Senior Adults
<i>Bible Fellowship Groups</i>	<i>Bible Fellowship Groups</i>	<i>Bible Fellowship Groups</i>	<i>Bible Fellowship Groups</i>	<i>Bible Fellowship Groups</i>
<i>Mid-Week Children's Activities</i>	<i>Mid-Week Student Activities</i>	<i>Parents Night Out</i>	<i>Seasonal Bible Studies and Activities</i>	<i>Cornerstone Fellowship Opportunities</i>
<i>Vacation Bible School</i>	<i>Summer camps and activities like Mission Arlington</i>	<i>Vacation Bible School</i>	<i>Worship Ministry</i>	<i>Deacon ministry to homebound seniors</i>
<i>Bible Drill</i>	<i>Bible Drill</i>		<i>Marriage Enrichment</i>	<i>Homebound Transport</i>

This overview is not all-encompassing. A variety of other classes and group studies exist which support demographic groups such as young adults, widows, women's and men's ministry, etc.

Outreach & Missions

Discovery Days Preschool	<i>State-licensed childcare center offering preschool classes for children ages 18 months through kindergarten</i>
Food Pantry	<i>Providing weekly access to food and household items for food insecure Allen, Fairview and Lucas residents</i>
ESL Ministry	<i>Weekly classes for community members offered throughout the year.</i>
GriefShare	<i>Community small group ministry for those experiencing grief.</i>
Foreign Language Churches	<i>Four partner churches meet on our campus and conduct ministry in Chinese, Korean, Vietnamese and Spanish.</i>
Compassion International Partnership	<i>Supporting two church plants/centers in Haiti and Peru financially and through mission trips. Funded in partnership with Compassion.</i>
International Commission Partnership	<i>Sends mission teams of FBC Allen members to advance the Gospel. Supports National to National outreach efforts in closed countries.</i>
Timothy Initiative Partnership	<i>Funds church planting in hard to reach areas of the world that may be hostile to the Gospel.</i>
Missionary Support	<i>Supporting the work of foreign missionaries in China, Cambodia and Malaysia. These missionaries are personally connected to FBC Allen.</i>
Chainsaw Ministry	<i>Volunteer team providing as needed disaster relief and tree-cutting service.</i>
School District	<i>Backpack ministry providing weekend nutrition to food insecure students; as well as Silver Eagles (Seniors) Study Buddies reading support volunteers</i>
Samaritan's Purse	<i>Church-wide giving projects connecting members with opportunities to share Christ's love across the globe</i>
Angel T-Ball	<i>Special needs T-ball league served by youth volunteers in partnership with Kiwanis Club</i>

About Allen

Allen is located about 25 miles north of downtown Dallas and is one of the 10 largest cities in Collin County. Recognized nationally for its exciting developments and parks, excellent education system, and innovative projects, Allen is a gem in the Dallas-Fort Worth Metroplex. Once a small town along US 75, Allen was incorporated as a city in 1953 and has evolved into a vibrant community known for its diverse shopping and dining options, recognized and expanding parks and trails system, and numerous entertainment offerings. Allen is recognized as the top-ranked city in Texas and 59th in the nation for quality of life according to cityofallen.org.

Demographics and Population Growth

- Current population: 210,639
- Projected 215,000 by 2028
- Median age 36.0 years
- Average household size is 2.8

Education System

Allen Independent School District is a nationally recognized public school district serving the majority of the city as well as parts of Parker and McKinney. Ranked 11th in Texas by Niche.com in 2023, Allen ISD supports more than 21,000 students from prekindergarten to 12th grade. The district includes one early childhood school, 16 elementary schools, three middle schools, one freshman center, and one high school. AISD's STEAM Center offers interactive learning in science, technology, engineering, art, and mathematics.

About Allen High School

- 97% graduation rate
- 90% of graduates pursue further education
- 27 National Merit finalists in 2023
- Significant participation in Advanced Placement and International Baccalaureate programs.
- Widely recognized Fine Arts Department and the Athletics Department, with students receiving numerous accolades in music, sports, and other extracurricular activities.
- Highest participation in UIL of any high school statewide

Economic Overview

- Allen's median household income is \$101,688
- 7,693 Allen based businesses employing 78,677 people

Employment

- Workforce is predominantly in white-collar jobs (78%), with 11% in blue-collar and 11% in services.
- Unemployment rate stands at 3.7%.
- The workforce in Allen experiences a range of commute times. Approximately 15.6% of workers have a travel time of 35-39 minutes, while 15.5% commute for 25-29 minutes. A significant portion of the population, 14.1%, spends 30-34 minutes traveling to work. Only a small percentage, 1.2%, endure a commute of 90 minutes or more.
- Overall, the majority of residents have moderate commute times, which contributes to the city's appeal as a residential area with access to employment opportunities both locally and in nearby Dallas.

Housing and Living Costs

- Median home value in Allen is \$395,590, with an average annual expense of \$17,702 for mortgage and basic living costs.
- Median contract rent is \$1,391.
- 4,276 households are below the poverty level.

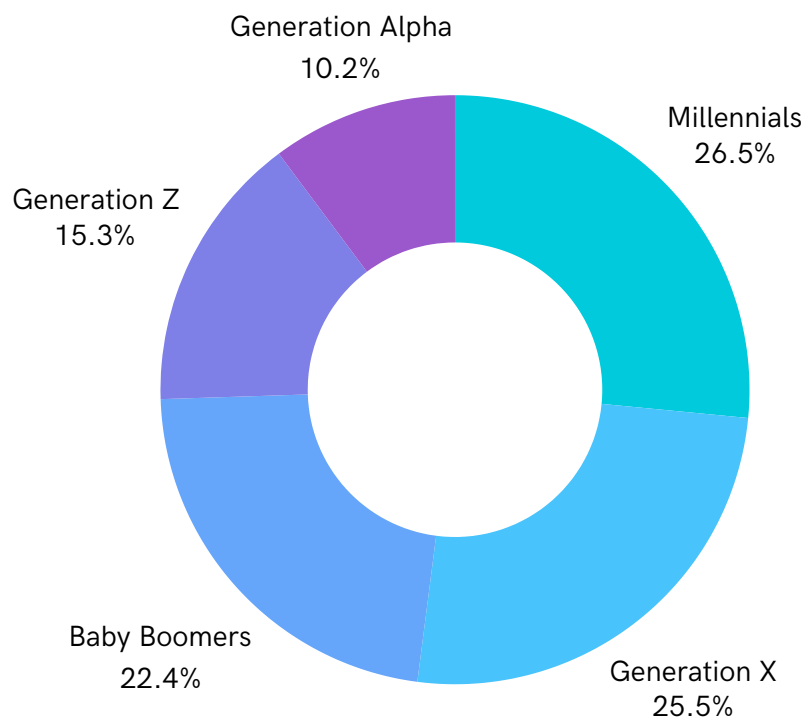
Demographic Information

Marriage and Family

- Approximately 60% of adults in Allen are married. About 28% have never married, and 9% are divorced. The city has 22,390 households with married couples and children.

Racial and Ethnic Diversity

- Diverse racial and ethnic population: 46% White, 18% Black, 15% Asian, 11% Hispanic, and 10% identifying as Two or More Races. 55 different languages are known to be spoken throughout the community. Median age in Allen was 40.5 in 2020.



At-Risk Populations

- Allen has approximately 4,362 unemployed individuals aged 16 and older
- 22,893 residents ages 65 and older.
- 11,044 households have a person with a disability.
- 1,940 households do not have a vehicle.

Community Engagement and Religion

- 19% of Allen residents said they volunteered for charitable organizations.
- 27% said they contribute to religious organizations in the past year.
- 46% of residents said they attend religious services regularly.

Sources: BGTC, KYC Profile (Church Answers.com), U.S. Census Bureau and the City of Allen.

Pastor Candidate Profile

First Baptist Church Allen seeks an energetic pastor who connects naturally with members in an intergenerational church context. After the long and faithful ministry of our previous Senior Pastor, we seek an individual who desires to plant roots in Allen and serve for a long season. He must be a leader, a vision caster, a solid bible teacher and a loving shepherd.

As a long established church, FBC Allen celebrates its significant history in the Collin County community. We therefore desire a Senior Pastor who helps set a fresh vision for the future and who generates a passion for FBC Allen to be a place of hope and redemption. We desire to be a church where community members grow in their understanding of what it means to follow Jesus and to live as citizens of His Kingdom. Because FBC Allen is a multi-generational church, the Senior Pastor must be humble, gentle and patient in his approach to implementing necessary change.

In addition to the church's focus on discipleship through Bible Fellowship Groups, FBC Allen is looking for a well-educated and faithful Bible teacher who brings Scripture to life both from the pulpit and at a variety of events that occur in the church and the community. Moreover, FBC Allen desires a pastor — a true shepherd who cares for the members and leads both staff and lay ministry leaders with gentleness, love and grace.

Ministry Priorities

- Possess a commitment to expository teaching and preaching vs. topical sermon presentations (i.e. politics, cultural trends, non-Biblical holiday themes, etc.)
- Preach biblically faithful sermons relevant to people's lives and focused on producing spiritual growth.
- Cast vision that strategically leads FBC Allen into a fruitful and gospel-inspired future.
- Possess strong communication skills, emotional intelligence and personal humility.
- Empower and develop ministry staff and set a culture of discipleship for lay leadership.
- Commit to being a personal soul-winner and disciple of Jesus who leads by example.
- Commit to serving the community of Allen for a significant season.
- Connect well with young families in particular and all generations in general.
- Serve with authenticity, passion and energy.
- Engage in pastoral visitation and care as appropriate.

Position Requirements

- Education: Master of Divinity (MDiv) degree or its equivalent required; a doctoral degree (DMin or PhD) in Bible or ministry is preferred.
- Education must include a Baptist connection.
- Ten years pastoral experience in a multi-staff church preferred.
- Demonstrable leadership qualities evident from current and previous ministry positions.
- Commitment to serve within the church's current denominational relationships (BGCT, SBC, and related partnerships).
- Commitment to evangelism and outreach in an increasingly diverse community.

- Commitment to serve the church and its community as a first priority.
- Evidence of an unequivocal call to the ministry of as a lead pastor.
- A lifestyle congruent with the biblical requirements for leaders (Acts 20:28; 1 Tim. 3:1-7; 2 Tim. 2:1-3; 4:2; Titus 1:6-9; etc.).
- A commitment to continued spiritual and personal growth.
- Must agree to and pass state and federal criminal, financial and sexual misconduct background checks as well as a review of social media profiles.

Primary Responsibilities

- Provide overall vision for the direction of the church.
- Serve as the spiritual leader of the church.
- Operate as the church's primary Bible teacher and preacher, responsible for the regular Bible-teaching ministry of the church.
- Collaborate with the worship leader to plan the weekly worship services.
- Provide consistent leadership to church staff in execution of strategic planning and vision casting.
- Conduct weddings, funerals and baptisms as needed in accordance with FBCA's doctrinal commitments.
- Officiate the Lord's Supper on a regular basis.
- Spend an appropriate amount of time in study and prayer for personal growth and in preparation for preaching and teaching opportunities.
- Serve as a role-model leader in personal discipleship, stewardship and evangelism.
- Meet regularly with the church staff and other ministry leaders to disciple and train them in ministry.
- Meet with the church's deacons and lay leaders on a regular basis to report on the spiritual, organizational and financial health of the congregation.
- Develop and maintain strategic relationships with other churches and organizations in our community consistent with our church's mission and values.
- Conduct spiritual counseling with church members/families when needed.
- Serve as an ex-officio member of all church committees and teams.
- Ensure an ongoing ministry to church members who are homebound or nursing-home residents.
- Other duties as they arise.