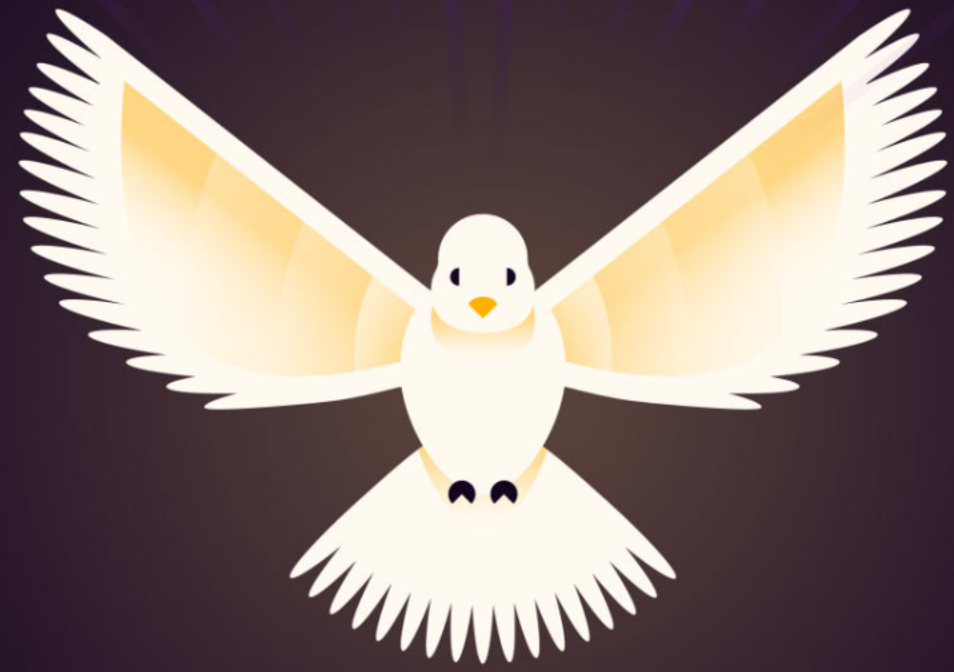




SCRIPTURE READING
JOHN 15:9–13

THE GOSPEL ACCORDING TO



— JOHN —



P O I N T 1

**Our Love is
Divine**

Christ Loves Us

The diagram consists of three text elements arranged in a triangle, connected by three curved purple arrows forming a clockwise cycle. The top element is 'Christ Loves Us', the bottom-left is 'Abiding in Christ's Love', and the bottom-right is 'We Love Others'. The entire diagram is enclosed in a purple double-line border with decorative orange sun-like symbols in each corner.

**Abiding in
Christ's Love**

We Love Others



P O I N T 2

**Love is
Cross-Shaped**



P O I N T 3

**Love is
Ordinary**

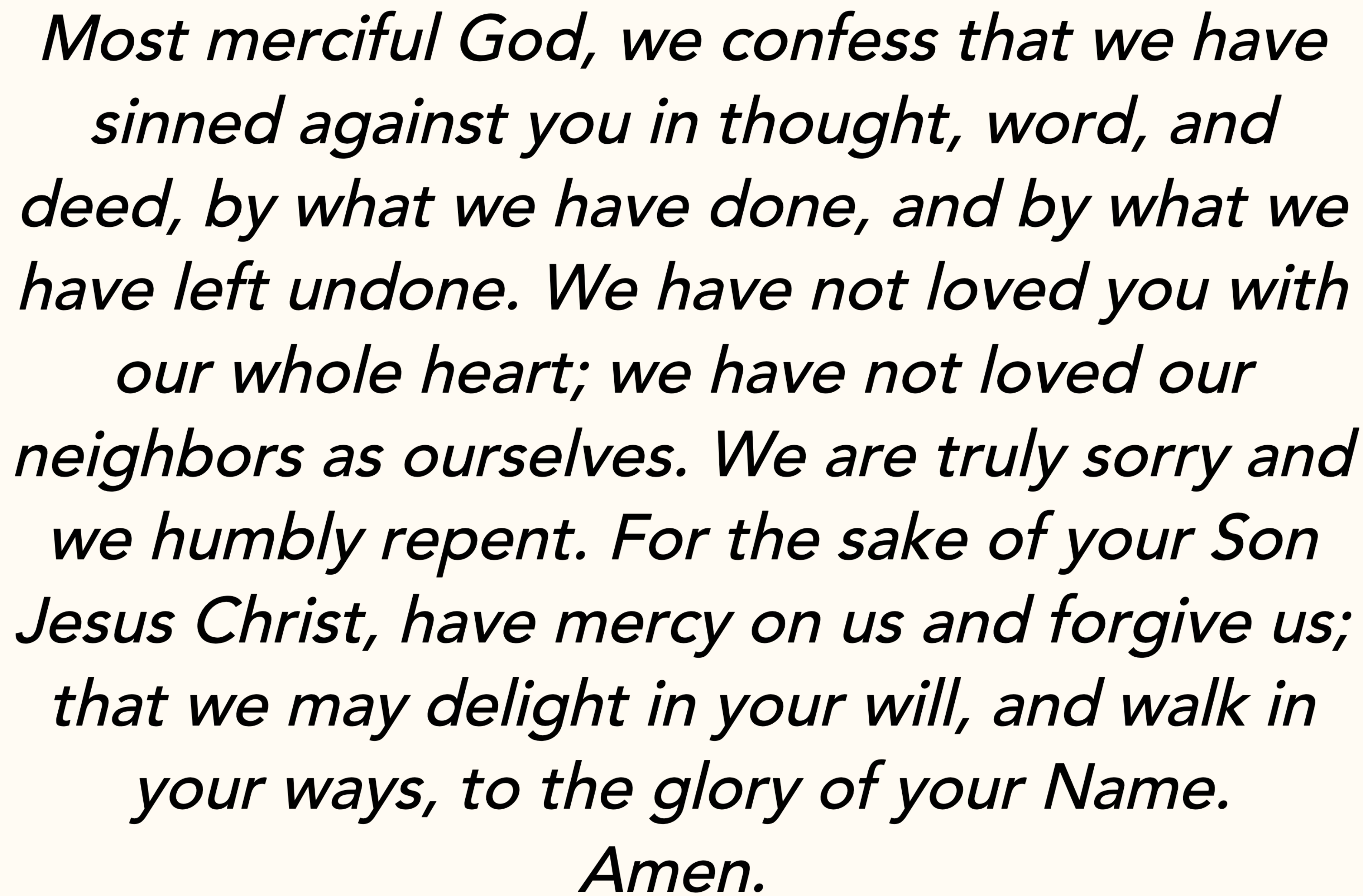


P O I N T 4

**Love is
Extraordinary**

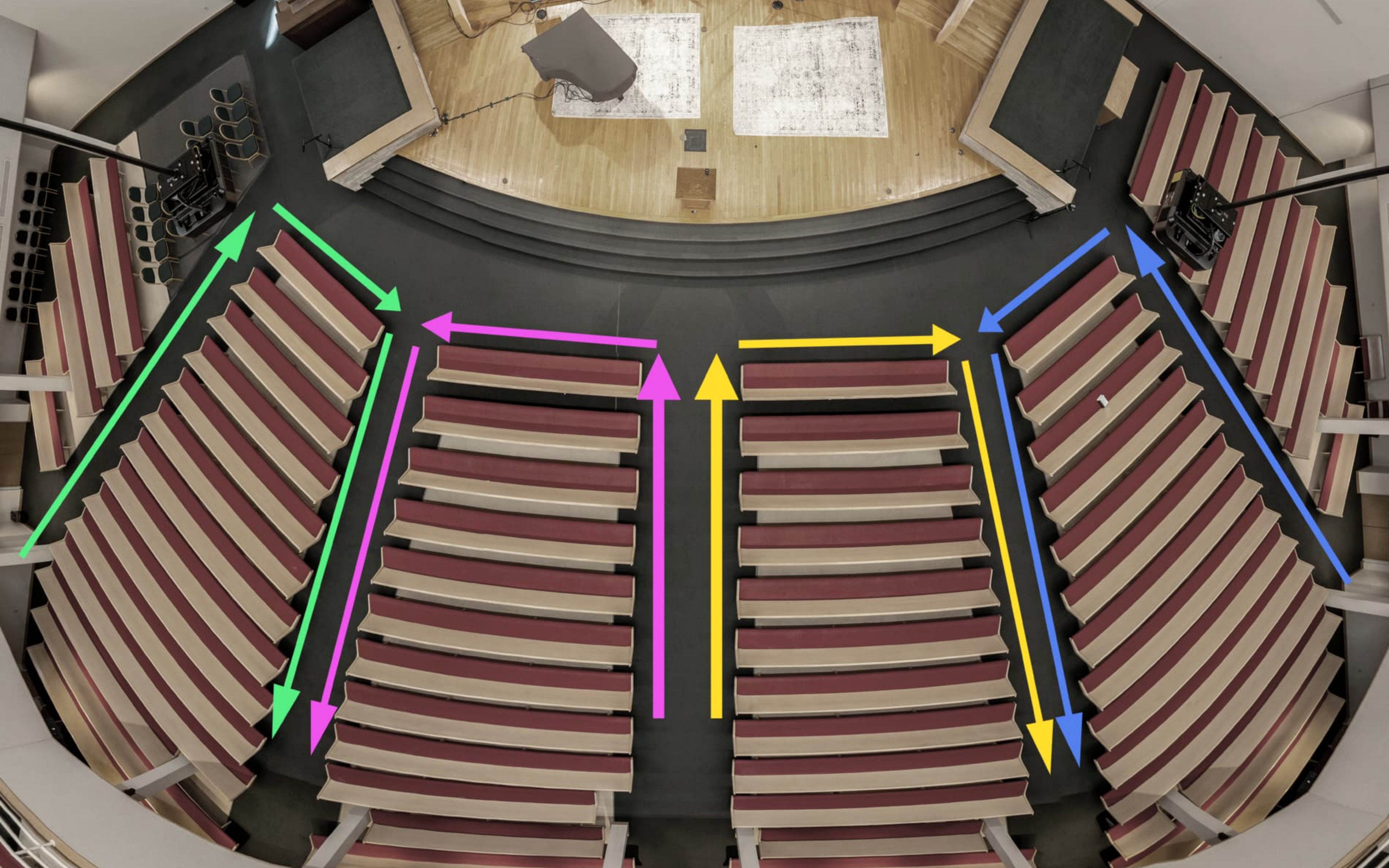


**Our Love is
Divine**

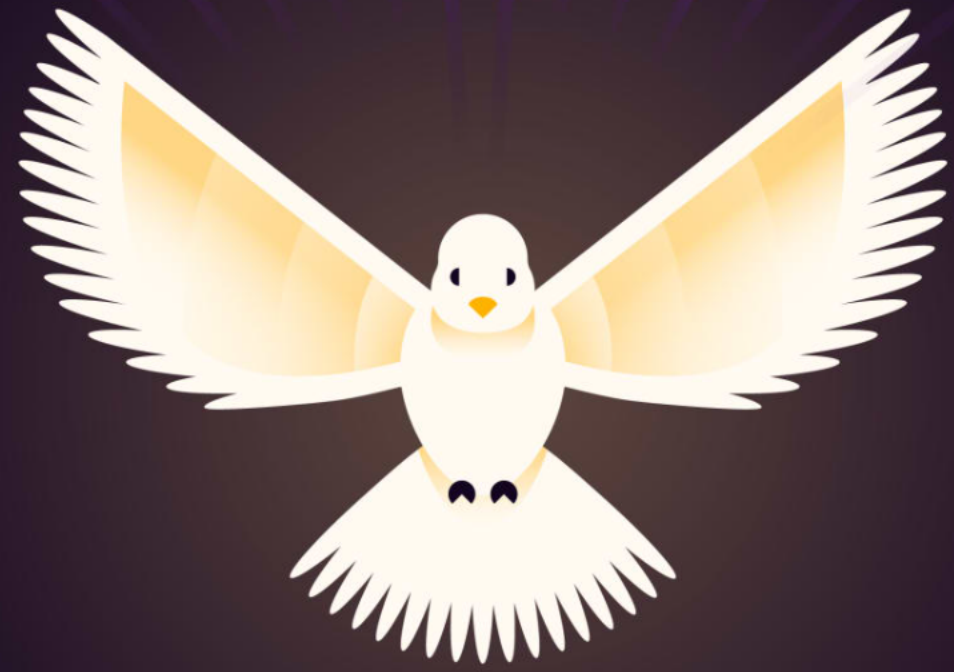


Most merciful God, we confess that we have sinned against you in thought, word, and deed, by what we have done, and by what we have left undone. We have not loved you with our whole heart; we have not loved our neighbors as ourselves. We are truly sorry and we humbly repent. For the sake of your Son Jesus Christ, have mercy on us and forgive us; that we may delight in your will, and walk in your ways, to the glory of your Name.

Amen.



THE GOSPEL ACCORDING TO



— JOHN —