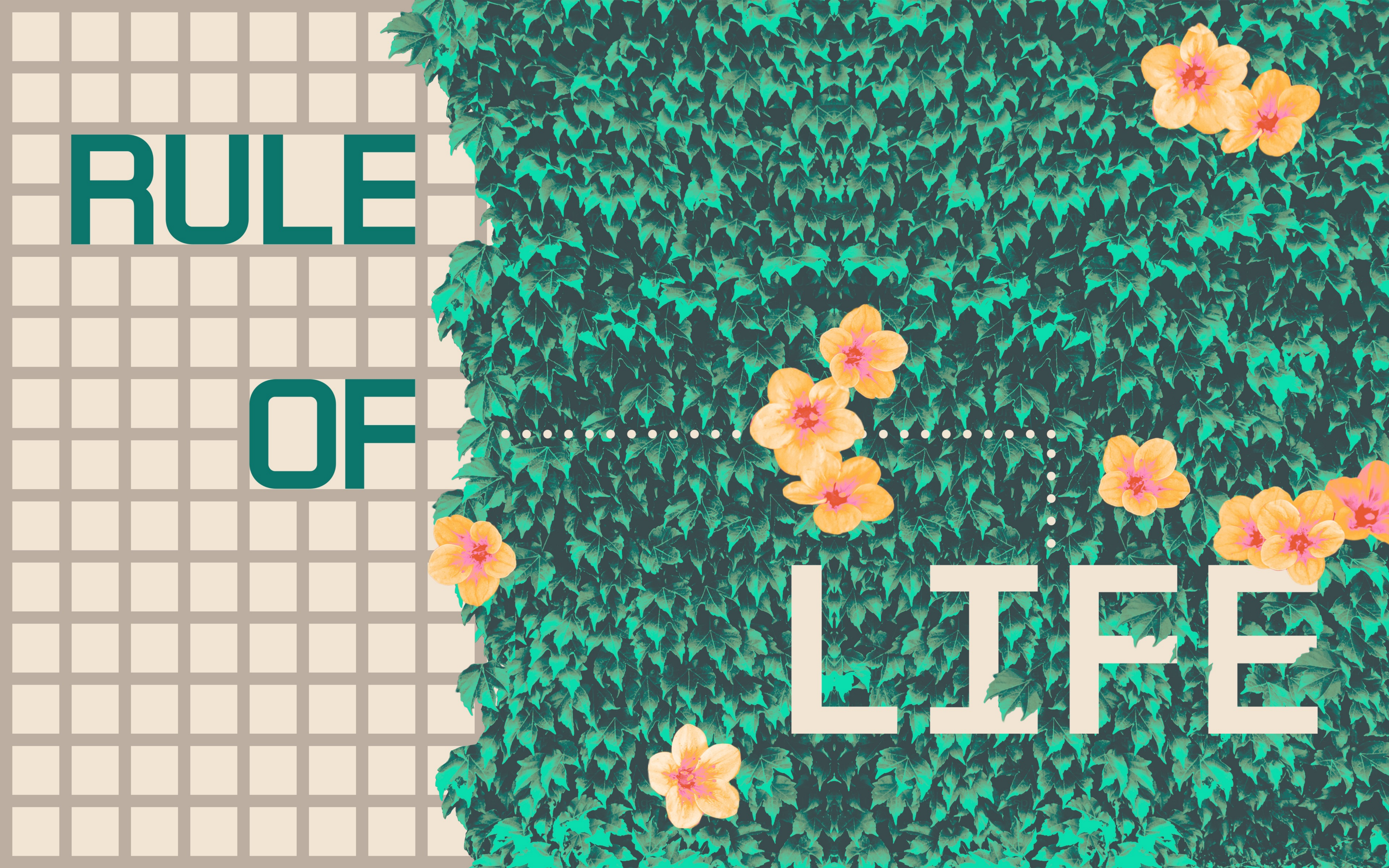


RULE

OF

LIFE





Figs not Stones

Mark 11:12-26



Memory Verse

**Whoever claims to
abide in Him must walk
as Jesus walked.**

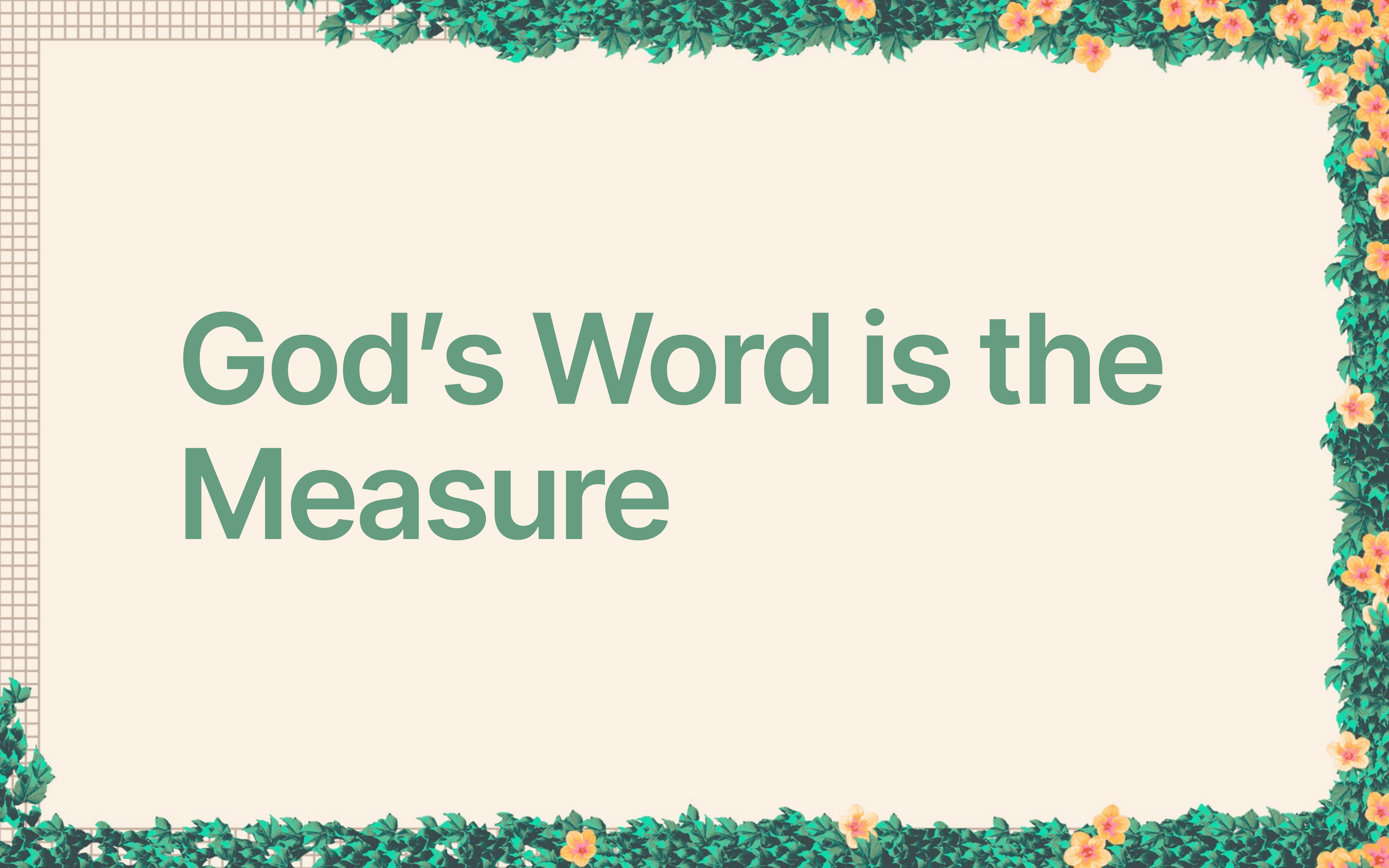
1 John 2:6





A decorative border with green leaves and yellow flowers frames the top, bottom, and right sides of the page. The top-left corner features a grid pattern.

Stability Isn't Holiness

A decorative border with green leaves and yellow flowers frames the top, bottom, and right sides of the page. The top-left corner features a grid pattern.

God's Word is the Measure

A decorative border with green leaves and yellow flowers runs along the top, bottom, and right edges of the page. The top-left corner features a small grid pattern.

**Fruit that Tastes
like God**

A decorative border with green leaves and yellow flowers runs along the top, bottom, and right edges of the page. The top-left corner features a grid pattern.

Keep Watch

RULE

OF

LIFE

