

# SHINE

Hope + Peace + Joy + Love



# First Sunday of Advent

December 1, 2024

8:30 a.m. and 10:45 a.m.

GATHERING MUSIC

Larry Landusky

WELCOME AND ANNOUNCEMENTS

Annie Bray

Break forth, O beautiful, heavenly light to herald our salvation.  
He stoops to earth—the God of might our hope and expectation.  
The King shall come when morning dawns and light and beauty brings.  
Hail, Christ the Lord! Your people pray, come quickly, King of kings.

The Lord be with you.  
And also with you.

\* *Arise, Your Light Has Come*

FESTAL SONG



1. A - rise, your light is come! The Spir - it's call o - bey;  
2. A - rise, your light is come! Flight wide the pris - on door;  
3. A - rise, your light is come! All you in sor - row born.  
4. A - rise, your light is come! The moun - tains burst in song!

Show forth the glo - ry of your God Which shines on you to - day.  
Pro - claim the cap - tive's lib - er - ty Good tid - ings to the poor.  
Bind up the bro - ken - heart - ed ones And com - fort those who mourn.  
Rise up like ea - gles on the wing. God's pow'r will make us strong.

Words and Music by Ruth Duck | William H. Walker

Words: ©1974 by Ruth Duck Music: Public Domain | Used by Permission. CCLI License #2282686 All Rights Reserved

\*Please stand if it is comfortable to do so

## \*CALL TO WORSHIP

Annie Bray

How can we prepare this house for the coming of Jesus, the King?

**With garlands and wreaths of evergreens,**

**Whose leaves are ever living, ever green.**

How shall we prepare this house for the coming of Jesus, the Son of God?

**By hearing again the words of the prophets**

**who foretold the saving work of God.**

For God did not send His Son into the world to condemn the world,

But that the world through Him might be saved.

*All Glory to God in the highest!*

## \*PASTORAL PRAYER

Charles Johnson

## ADVENT VIDEO

### *The Advent Wreath*

The **Advent Wreath** is a vivid symbol of preparation. The circle of evergreens reminds us of the everlasting covenant offered in the birth of Jesus. The four candles symbolize HOPE, PEACE, JOY AND LOVE. Today, we light the first candle as a symbol of Christ, our HOPE.

### *One Small Flame*

KINGSFOLD

The musical score for 'One Small Flame' is written in G major (one sharp) and 4/4 time. It consists of four staves of music. The lyrics are: 'We light a candle as a prayer for hope to shine so bright. A hope to calm our dark despair a hope born of Your light. With long-ing hearts we watch and wait in faith for the Prom-ised One, That one small flame may light the way for the Child of Hope to come.'

Words and Music by Pamela Martin | Ralph Vaughan Williams

© 1906 The English Hymnal, Oxford University Press | Used by Permission. CCLI License #2282686 All Rights Reserved

## SCRIPTURE READING

Dennis & Debby Zuehlke,  
Sheila Campbell

### 1 John 1:1-9

<sup>1</sup>We declare to you what was from the beginning, what we have heard, what we have seen with our eyes, what we have looked at and touched with our hands, concerning the word of life— <sup>2</sup>this life was revealed, and we have seen it and testify to it and declare to you the eternal life that was with the Father and was revealed to us— <sup>3</sup>what we have seen and heard we also declare to you so that you also may have fellowship with us, and truly our fellowship is with the Father and with his Son Jesus Christ. <sup>4</sup>We are writing these things so that our joy may be complete. <sup>5</sup>This is the message we have heard from him and proclaim to you, that God is light and in him there is no darkness at all. <sup>6</sup>If we say that we have fellowship with him while we are walking in darkness, we lie and do not do what is true; <sup>7</sup>but if we walk in the light as he himself is in the light, we have fellowship with one another, and the blood of Jesus his Son cleanses us from all sin. <sup>8</sup>If we say that we have no sin, we deceive ourselves, and the truth is not in us. <sup>9</sup>If we confess our sins, he who is faithful and just will forgive us our sins and cleanse us from all unrighteousness.

The Word of God for the People of God.  
Thanks be to God!

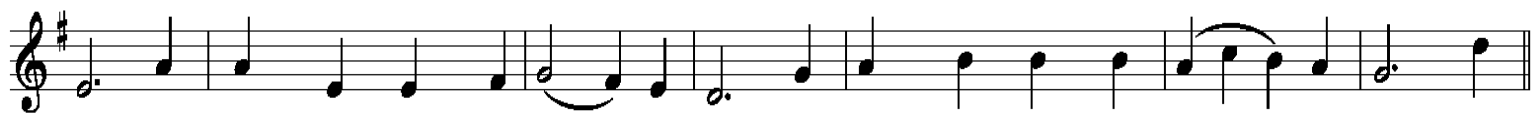
## LIGHTING OF THE CANDLE OF HOPE

### *O Come, O Come, Emmanuel*

### VENI EMMANUEL



1. O come, O come, Em - man - u - el, and ran - som cap - tive Is - ra -  
2. O come, Thou Day - spring, come and cheer our spir - its by Thine ad - vent



el; That mourns in lone - ly ex - ile here, un - til the Son of God ap - pear. Re -  
here; Dis - perse the gloom - y clouds of night, and death's dark shad - ows put to flight.

#### CHORUS



joice! Re - joice! Em - man - u - el shall come to thee, O Is - ra - el!

## The Poinsettia

The Poinsettia is a many-pointed star that has become a symbol of the Star of Bethlehem.

CHILDREN'S TIME (10:45 AM)

Derlyn Gordon

### *Lo, How A Rose E'er Blooming*

ES IST EIN ROS'



1. Lo, how a Rose e'er bloom - ing From ten - der stem hath sprung  
2. I - sa - iah 'twas fore - told it, The Rose I have in mind:  
3. This Flow'r, whose fra - grance ten - der With sweet - ness fills the air,



Of Jes - se's lin - eage com - ing As men of old have sung. It came, a  
With Ma - ry we be - hold it, The vir - gin moth - er kind. To show God's  
Dis - pels with glo - rious splen - dor, The dark - ness ev - ry - where. True man, yet



flow - er bright, A - mid the cold of win - ter, When half - gone was the night.  
love a - right She bore to men a Sav - ior, When half - gone was the night.  
ver - y God, From sin and death He saves us, And light - ens ev - 'ry load.

Words and Music by Harriet Krauth Spaeth | Michael Praetorius | Theodore Baker | Public Domain

## *The Wreaths, Garlands and the Tree*

From ancient times, **evergreens** have been considered a symbol of eternity, a sign of God's everlasting nature. Isaiah tells us that there will be no end to the reign of the Messiah. These are symbols of Christ's gift of eternal life and of the celebration of Christmas itself.

CHORAL RESPONSE

*O Come Messiah*  
by Lloyd Larson

Second Voices

## \*GOSPEL READING

Charley Camp, LaMicha Hogan

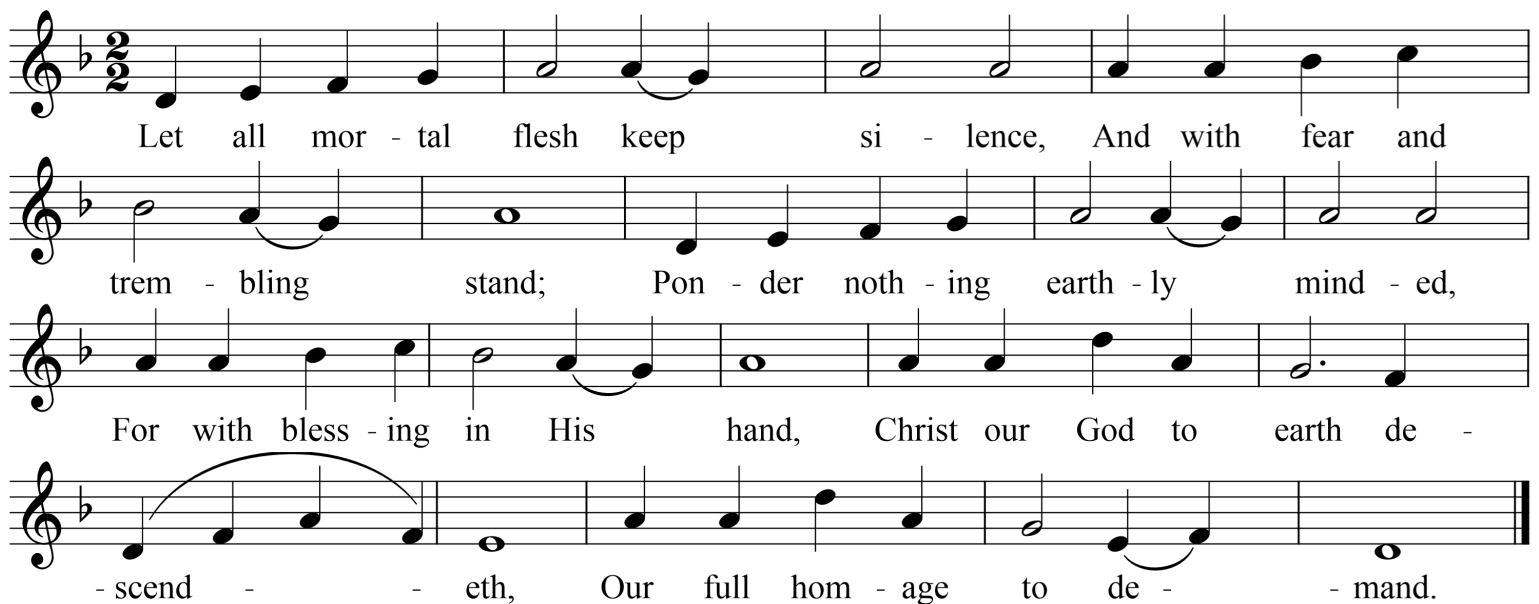
### *Luke 21:25-36*

<sup>25</sup>“There will be signs in the sun, the moon, and the stars and on the earth distress among nations confused by the roaring of the sea and the waves. <sup>26</sup>People will faint from fear and foreboding of what is coming upon the world, for the powers of the heavens will be shaken. <sup>27</sup>Then they will see ‘the Son of Man coming in a cloud’ with power and great glory. <sup>28</sup>Now when these things begin to take place, stand up and raise your heads, because your redemption is drawing near.” <sup>29</sup>Then he told them a parable: “Look at the fig tree and all the trees; <sup>30</sup>as soon as they sprout leaves you can see for yourselves and know that summer is already near. <sup>31</sup>So also, when you see these things taking place, you know that the kingdom of God is near. <sup>32</sup>Truly I tell you, this generation will not pass away until all things have taken place. <sup>33</sup>Heaven and earth will pass away, but my words will not pass away. <sup>34</sup>“Be on guard so that your hearts are not weighed down with dissipation and drunkenness and the worries of this life and that day does not catch you unexpectedly, <sup>35</sup>like a trap. For it will come upon all who live on the face of the whole earth. <sup>36</sup>Be alert at all times, praying that you may have the strength to escape all these things that will take place and to stand before the Son of Man.”

This is the Gospel of our Lord Jesus Christ.  
Thanks be to God!

### *\*Let All Mortal Flesh*

PICARDY



Let all mor - tal flesh keep si - lence, And with fear and  
trem - bling stand; Pon - der noth - ing earth - ly mind - ed,  
For with bless - ing in His hand, Christ our God to earth de -  
- scend - - eth, Our full hom - age to de - - mand.

Words and Music by Gerard Moultrie | Public Domain

## HOMILY

Charles Johnson

*Heads Up*

## INVITATION TO CHRISTIAN DISCIPLESHIP

You are invited to dedicate your life to Christ, join our faith community, or answer a call from God to do ministry in this world by coming forward during the hymn and share this decision with a pastor.

*\*Hope, Peace, Joy and Love*

BAUGH

Hope, peace, joy and love! These are gifts You bring from above.  
Jesus, Emmanuel, come to be, Light of Your hope reflected in me.

## THE MORNING OFFERING

Please drop your connection card and offering in the plate as it is passed. If you would like to donate online, please go to [secondb.org/give](http://secondb.org/give) or @secondbaptistlbc on Venmo

\*OFFERTORY PRAYER

Nancy Sharp, Howard Darwin

OFFERTORY

*What Child is This?*  
arranged by Ian Wei

Marilyn Arland and  
Larry Landusky

\*RECESSION OF THE CHRIST CANDLE

The Christ Candle exits today, only to return on Christmas Eve. Its disappearance from the Advent wreath stands as a symbol of remembrance that he will one day return.

**Even so, Lord Jesus, quickly come!**

\*PASSING THE PEACE OF CHRIST

Please share the peace with those near you.

*\* Shine on Us*

SMITH

Lord, let Your light, light of Your face shine on us.  
Lord, let Your light, light of Your face shine on us  
That we may be saved, that we may have life  
To find our way in the darkest night.  
Let Your light shine on us. Let Your light shine on us.

\*PASTORAL BENEDICTION

Charles Johnson

## WE TAKE SERIOUSLY OUR MINISTRY OF PRAYER

Prayer cards are available. Please place your filled out card and offerings in the box on the rear wall of the Worship Hall or place in the offering plate as it is passed during worship.

## ASSISTIVE LISTENING DEVICES ARE AVAILABLE FOR YOUR USE.

Please ask an usher for assistance as you enter the sanctuary for worship.

### *Every Member a Minister*

#### *Church Staff*

Rev. Charles F. Johnson  
*Interim Senior Pastor*

Rev. Dr. Tim Lyles  
*Pastor of Music, Worship and Administration*

Annie Bray  
*Director of Children's Ministries*

Zachary Carpenter  
*Communications Coordinator*

Tracy Douthitt  
*Director of Business Operations*

Larry Landusky  
*Pianist*

Rev. Josh McDonald  
*Youth Pastor*

Mike Spann  
*Director of Operations*

Joni Lynch  
*Church Hostess*

Marilyn Arland  
*Organist*

#### *Vision & Leadership Team*

Kara Darnell  
Tom Donaldson  
Stacy Elliott

John Hunter  
Mark McBrayer  
Stephanie Nash

Jim Smith



@secondbaptistlbk

secondbaptist

LOVE. ALL. NOW.  
secondb.org

6109 Chicago Ave., Lubbock, Texas 79424 | 806. 783.0202 | secondb.org