

A scenic view of a park featuring a small waterfall in the foreground, a wide set of stone steps leading up a hill in the middle ground, and numerous trees with vibrant green and pink blossoms. Modern buildings are visible in the background under a clear sky.

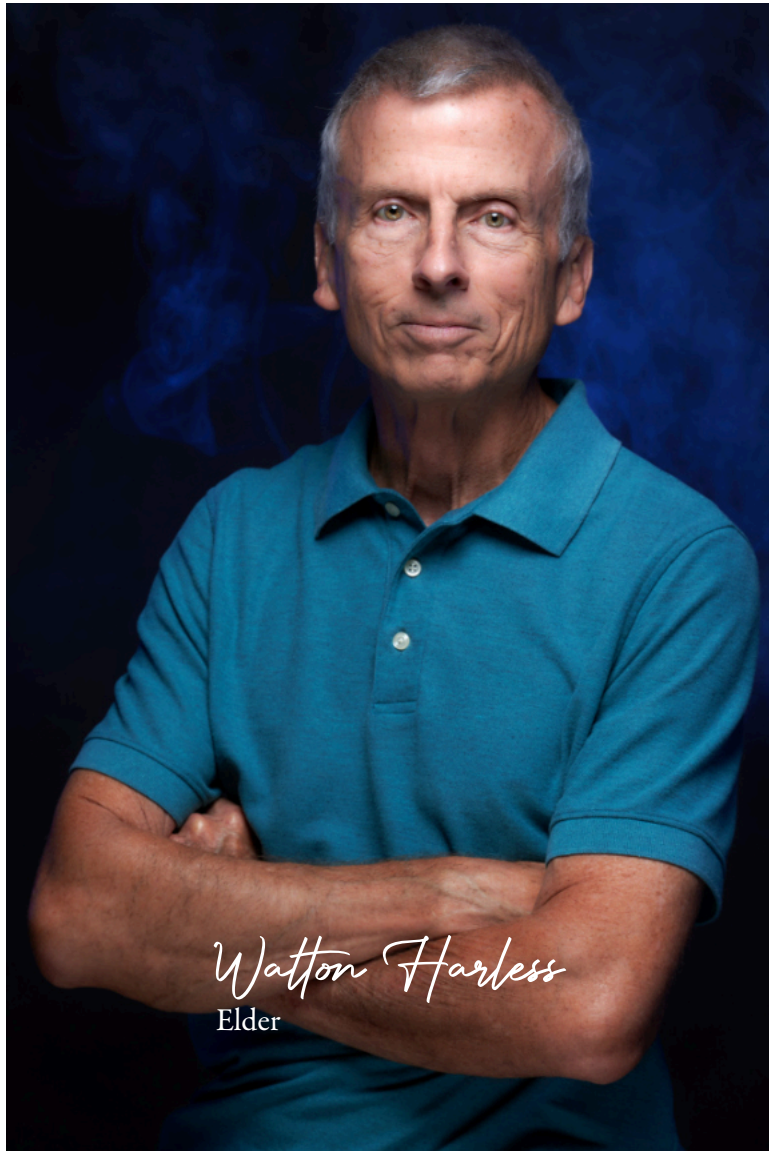
Flourish

*"May the Lord cause you to flourish,
both you and your children."*

Psalms 115:14

Is Twickenham poised to flourish as
Huntsville experiences explosive growth?

The Shepherd's Blessing



The story of my family's early experience at Twickenham was hardly unusual. That is, not unusual for Twickenham. We found our experience to be extraordinary in terms of the environment for spiritual growth.

Today as I observe young families at Twickenham, I find myself reflecting on those early years. For instance, we witnessed firsthand the dedication and hard work that was poured into the children's ministry.

Our youngest was four years old and he was quickly fascinated by the activities of the classes. He immediately felt at home with the small army of gifted teachers. Our girls were in seventh grade and fourth grade at that time, and their respective experiences were blessed by a dynamic youth program and a well-orchestrated grade school department. But in addition, we noticed that there were opportunities for our girls to give back to the

children's program in ways that were of great benefit to the children, but also a wonderful growth opportunity for them.

This tradition continues! Each year, a conglomerate of adults and kids team up under Amy's supervision to design, build and paint an amazing hands-on learning environment. The result is an environment where parents and teens work together to orchestrate a wide range of interactive teaching methods every Sunday during the summer break.

The Twickenham leadership believes that the children's ministry is of such great importance that it requires a permanent space dedicated to helping our children grow in wisdom, stature, and in favor with God and man. These facilities will equip us to share the story of Jesus with young minds for years to come.

Campaign Leadership



We are wholeheartedly behind the mission of the Flourish Campaign because our family has been greatly blessed by the wonderful children's ministry at Twickenham.

Our three children have learned about the love of Jesus and have grown in their faith through the biblical instruction they received through this ministry. The seeds sown during class time and outside activities took root and impacted our children's decision to be baptized and become disciples of Jesus.

Our youngest son is a perfect example of how Twickenham's children's ministry is a warm and welcoming place for children to learn more about their Creator and his Son. He never felt comfortable at our prior church. We would inevitably be called out of the worship service to get him because he could not be consoled.

We had heard good things about the children's ministry at Twickenham, so we decided to visit. We signed him in for class with some apprehension, and watched him crawl through the gate and walk down the hall with his teacher. We made a note of which classroom he entered because we fully expected to get a tap on the shoulder to come get him.

Much to our surprise, the tap on our shoulder never came. Instead, we were able to worship without interruption. He was all smiles when we picked him up after worship. We were simply amazed. That's when we knew that Twickenham was a special place for children.

The Flourish Campaign is vital because it will provide the much-needed infrastructure to allow Twickenham to be a special place for children for generations to come.

We will tell the next generation the praiseworthy deeds of the Lord, his power, and the wonders he has done.
Psalm 78:4

Jody's Challenge



Over the last twelve months, I've sat in dozens of small group meetings with young parents and in Appreciative Inquiry sessions with brothers and sisters of all ages, asking questions and listening to input. In those meetings, lots of ideas surfaced, but one concern and one need were consistently voiced.

The concern? How can we protect our children from the false narratives the culture pushes and still prepare them to live faithfully in it?

The need? Community. Deeper connection. The sense that we are not alone in a world that feels more isolating and lonelier than ever.

The Flourish Campaign is aimed at addressing both that need and that concern. The following pages will outline plans for expanded gathering spaces. Right now, our lobbies are little more than passageways into the building. We want them to become more like front porches where folks can pull up a chair, sit

for a while and talk face-to-face.

You'll also see sketches of a much larger children's center. It features an indoor playground, a worship venue and glass-walled breakout rooms – all in one secure location. Here is where we will tell our children a much different story than the one culture is telling.

Huntsville is booming with explosive growth. Young families, single professionals and retired folks from all over the country are making our town their home. We must be ready to offer them a place to grow spiritually, to connect deeply with others and to prepare their children to live faithfully. We must make Twickenham a place to flourish.

There's lots more to unpack and your questions are welcome. Check out the Q/A section on *page 17*.

Lincoln's Reflections

Thirty-two years. That's how long I have served at Twickenham. First, as youth minister, occasionally as preacher (not my favorite), a Sunday school teacher, counselor, coach, referee, worship leader, executive minister and pretty much whatever else was needed. Together, we have weathered some hard seasons and seen some great times.

I met my wife, Amy, through this church. Our three boys were born here, grew up here and learned to love Jesus here. The ride so far has been fantastic. The blessings have far outweighed the struggles. But I believe the future will be even better.

That's what the Flourish Campaign is about – the future. It seems like ten minutes ago I was the young guy leaning on the wisdom of great elders like Lloyd Brooks, Delbert Williams and others. Now, many of us who looked to them for guidance are the ones others are looking to. Those who came before us laid a solid foundation. It's our turn to prepare the next generation for what lies ahead.

This church helped Amy and me raise our boys. We could not have done it without the love and support of this community. Last fall, I sat in on small group meetings with young parents and heard them asking for the same kind of help Twickenham gave us. The Flourish Campaign gives us the opportunity to walk alongside these young families.

Please be in prayer about your part in this important season. Who knows? A future youth minister, preacher, Sunday school teacher, worship leader or executive minister may be one of the children blessed by this campaign.

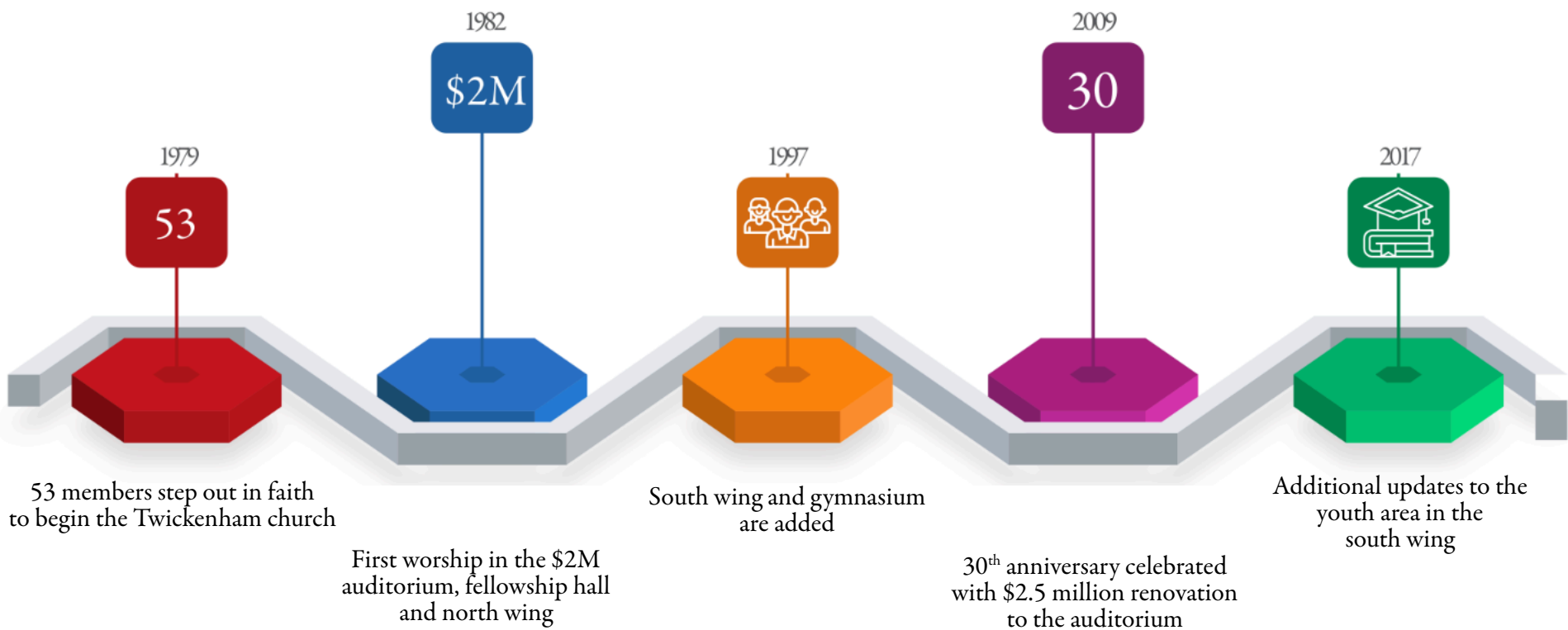


A Brief History



Jean Jones loved kids, and they loved her! For years, she taught the kindergarten class on Sunday mornings. It would take her two trips to bring in all her supplies and a little while to get everything set up just right. As she opened the Bible and shared God’s words with them, her goal was to ensure that the kids knew God loved them. She set the standard for teaching and loving kids at Twickenham and was a cornerstone for our children’s ministry.

A new generation of passionate and talented teachers continue to prepare our children with a solid faith foundation. As you can see through this progression of updates, our mission-critical children’s ministry has always dealt with what was left after renovations for some other group. Now is the time to provide better facilities for our Little Kids!



A Vision for the Future

I have been leading the children's ministry since the fall of 2001. While each generation faces unique challenges, the current and future generations are different from anything we could have imagined. They are inundated by influencers in ever-expanding forms of media that make it difficult for parents to keep up - much less protect their children's innocence. People who don't share our values are offering our children compelling stories. But we have a better story – the greatest story! And we must tell it well and in a way that connects with children today.

Our goal is to walk alongside parents as they raise their children to know and love the Lord. Each Sunday, we offer age-appropriate Bible classes - from babies patting the Bible and “finding” Jesus within its pages, to lessons on forgiveness and redemption for elementary students. We want Twickenham to be a place where kids WANT to be!

And if the kids want to be here, their parents will want to be here. Check out this video from one family who chose Twickenham years ago because that's where their children could thrive. Oh, and by the way, the dad in that family is now one of our shepherds.



What impact did Children's Ministry have on the current makeup of our eldership? Check out that story in this video.



A Focus On Children

In December, 1980, when Twickenham was raising funds for our first building, Bob Anderson, our first preacher explained that the project was about more than just bricks and mortar. “We are building for our children’s future.” In a congregational meeting in November, 1983, long-time member Carl Barton said, “We need to get back to basics. To get more out of our religion. To encourage our children.” Twickenham has a legacy of prioritizing children. Volunteers like the

legendary Jean Jones, Sandra Owens and many others have welcomed and blessed children for decades. Amy Smith, our children’s minister since 2001, has served with creativity and passion. Why so much focus on children?

- *The Bible mentions “child” or “children” over 500 times. The “young,” over 300 times. And future generations over 150 times. God prioritizes children.*

- *Over and over, the current generation (that’s us) is commanded to commend God’s works to the next, (Deuteronomy 32:7; Exodus 13:14; Joshua 4:21 – 22; Psalm 71:18; 78:6; 145:4).*

- *Research shows that most Christians (63%) made a decision for Christ between the ages of four and fourteen. The optimum time to reach people for Christ is when they are young.*

Children have always been a priority at Twickenham. In every way but one. Other than a few mechanical upgrades and minor cosmetic changes, our children’s spaces look very much like they did ten or twenty years ago. The Flourish Campaign is aimed at making sure our facilities reflect our historic values. After reviewing at least six different plans, it became clear that our best option is to repurpose the gym into a dedicated children’s space that combines an indoor playground, well-equipped worship area and break-out rooms in one secure location.

The gym is already dedicated exclusively to children’s ministry four months out of the year, arguably its most intense and impactful season. Whether the transformation resembles a beach or a MASH unit, our team uses their creative talents to teach biblical principles in ways that stretch mind, body, and soul.

Bob Anderson was right. We are building for our children’s future. And our children will forge the future of Twickenham.



From Passageways to Front Porches



Creating Spaces To Create Community

On a recent episode of NPR's All Things Considered, U.S. Surgeon General Dr. Vivek Murthy discussed America's loneliness epidemic. "In the last few decades, we've just lived through a dramatic pace of change. We move more, we change jobs more often, we are living with technology that has profoundly changed how we interact with each other," Murthy said.

We may be more digitally connected than ever, but we are experiencing less community. That's because community requires in-person interaction.

In Genesis 2:18, God said, "It is not good for the man to be alone." It wasn't good then and it isn't now. We need each other.

The Flourish Campaign expands the gym and children's lobbies to create larger, more welcoming entrances. The second-floor adult education and nursery lobbies will be enlarged to become more like front porches. Places where we pull up a chair, sit down together over a cup of coffee and talk. Not through a screen, but face-to-face.



Adult Education Lobby

In our appreciative inquiry meetings, many of you noted that the adult education lobby (second floor, south wing) was really the only place that offered an opportunity for members and guests to pull up a chair and connect. The Flourish Campaign will enable us to nearly double the size of that space. The large windows make it feel even roomier and bring in lots of natural light. This will be a great place to gather before class or to linger after worship.

Nursery Lobby

This rendering shows an expanded lobby on the second floor, north wing next to the nursery. The door you see in the left foreground of the image opens into the auditorium. At more than double the size of the current lobby and located in a less trafficked area, it will be a calming place for quiet, private conversations.





Children's Center

The gym has served us well for many years, providing space for our annual Easter brunch and other large gatherings. The youth ministry uses it for athletic activities and local ball teams practice there periodically. So, repurposing the gym into a children's center does require some sacrifice. But the mission to make disciples has to be our highest priority. This space will have its greatest impact not as an athletic facility, but as a place where children flourish spiritually as we prepare them to follow Jesus. And we'll still have our Easter brunch. Even after it is repurposed, the gym will retain some of its multi-use potential. We'll just have to spread out a little more around the building.

The new children's center will feature a large worship area with up-to-date audio, video and lighting, glass-walled breakout rooms for age-specific teaching, and an indoor playground, all in one secure location.

When looking for a church, one of the first things young families look for is a flourishing children's ministry. A well-equipped, dedicated children's center communicates that at Twickenham, children are a priority.





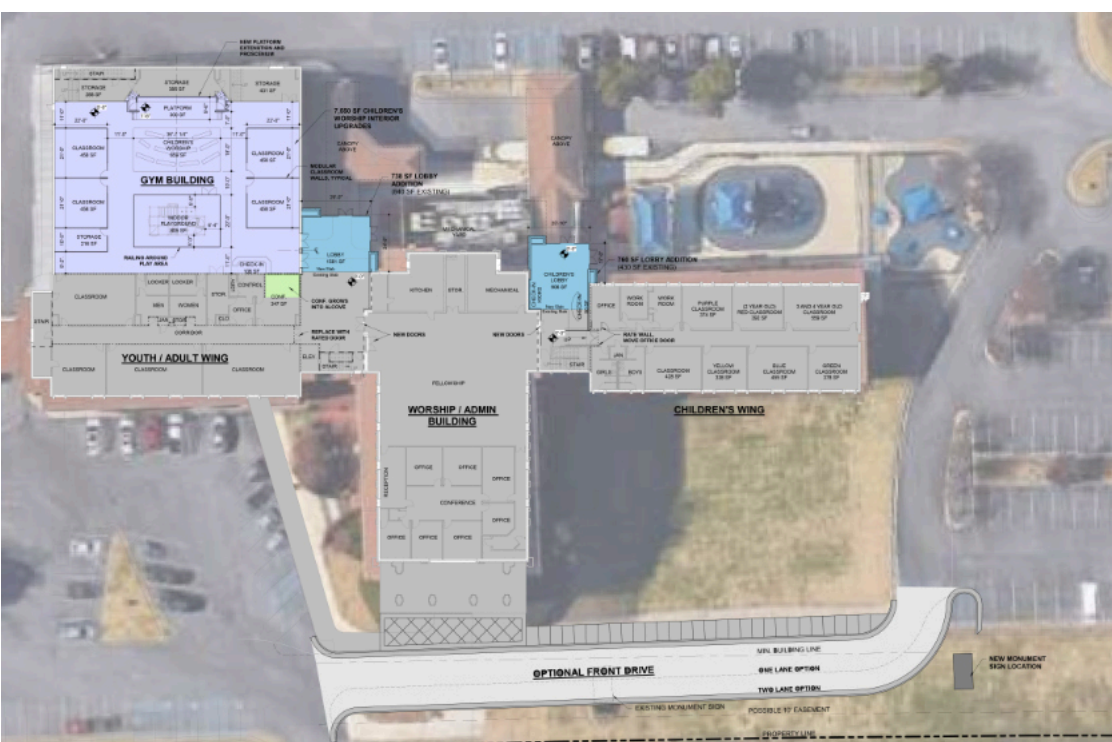
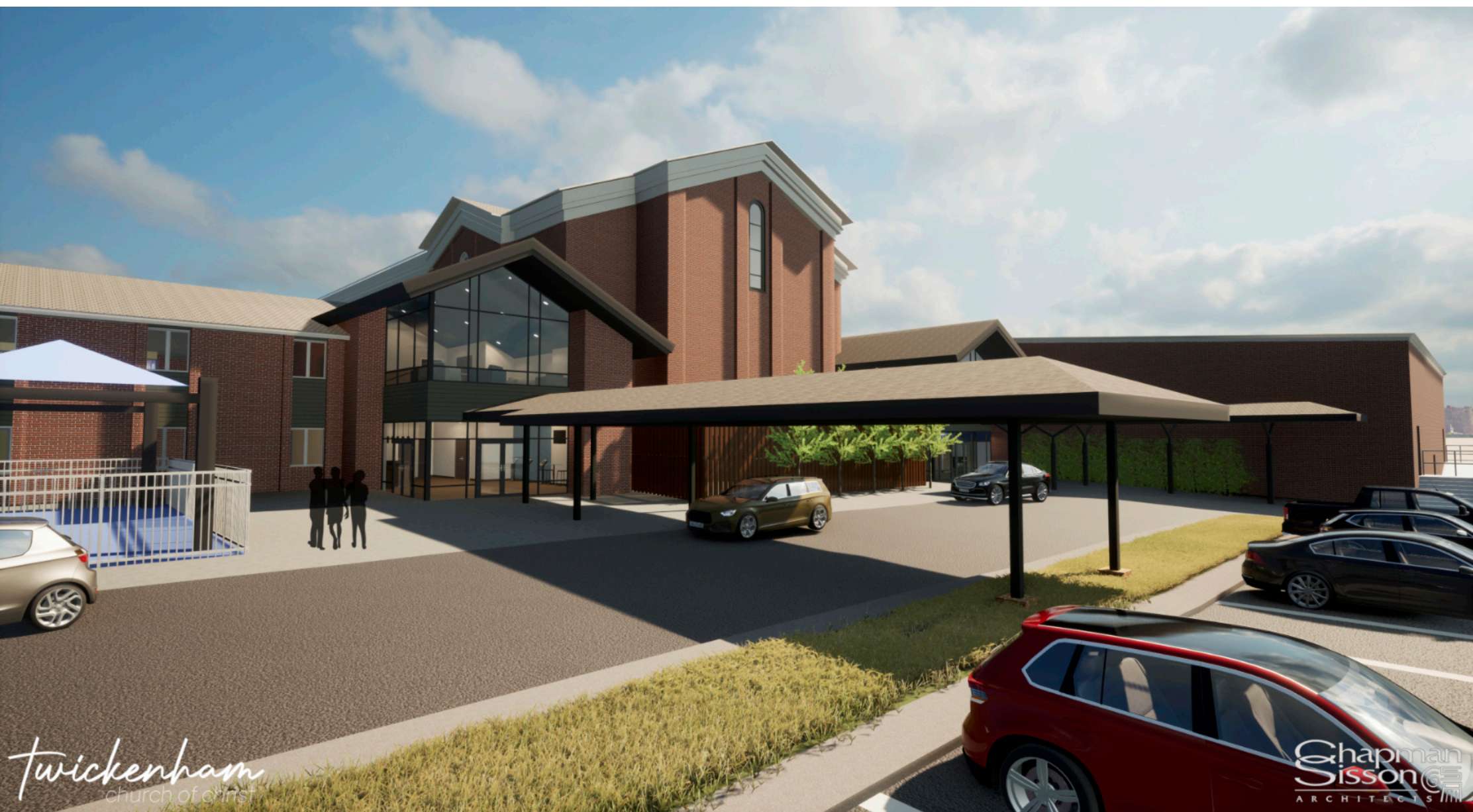
Main Lobby

This is the view members and guests will have when they enter our main lobby. The doors you see on the right (under the “Children” sign) are currently on the outside of our building. In the background, you can see the elevator and entrance to the youth wing. This is our most-used entrance. Expanding to nearly double its current size, it will become more than a passageway. It can become more like a front porch creating an immediate sense of welcome.

Twickenham Kids Lobby

This is the first-floor, north wing lobby. For a sense of where you are, the door on the left side of the image leads into the Fellowship Hall. See the two little shadow children on the left talking to each other? That's about where the current exterior wall is located. This lobby is busiest before Sunday school, as parents drop their pre-k children off for class, and immediately after worship when they pick them up. It's also tiny. Extending this space toward the parking lot will create much better traffic flow and provide room for members and guests to visit without feeling like they are packed in like sardines.





Easier Access

A flourishing church cares for the young and the old and everyone in between. For older members and others who struggle with impaired mobility, getting into our building is an uphill climb. Literally. Every entrance is on an incline. In the words of Isaiah (40:4), we'd like to fill in the valleys and flatten the hills. Or, to put it plainly, we want to pave a drop-off lane to the Whitesburg entrance. That way, folks who need a short, level walk can be driven right up to the front door.

Being dropped off at the front door might mean the difference between watching church on the computer at home or being there in person. It could be the difference between isolation and community.



The Flourish Campaign Goal:

Several other options for creating a dedicated children's center and more gathering space were considered, including adding new wings or tearing down the existing children's wing and replacing it. The cost estimates for those options *started* at over \$ 8 million. For less than half of that we can repurpose the gym for children's ministry, more than double our gathering space, enclose the north end stairwell and add a drop-off lane at the Whitesburg Drive lobby. While we have full confidence in God's provision and the historic generosity of Twickenham members, we must exercise wise stewardship of all that God has given us.

Our financial goal for the Flourish Campaign is \$3.5 million. We will raise that through pledges made over a period of three years beginning December, 2024, and ending December, 2027. What happens if we raise more than the \$3.5 million? We will praise God, thank you for your amazing response to his grace, and then spend a lot more time in prayer to God and conversations with you to determine an answer to that question.

More important than the financial goal is the spiritual goal: that we become a closer community, one more committed to one another, more consistent in prayer and more reliant on God.



December 2024 - December 2027

Campaign Questions & Answers

1. What is the financial goal of the campaign and how long does it last?

Our goal is to raise \$3,500,000. The campaign will last for three years, from December, 2024 to December, 2027.

2. Is my pledge in addition to my regular giving and Hacienda contribution?

Yes. Everything we do and everyone we support depends on our regular giving. Pledges to the Flourish Campaign are over and above our regular giving and the annual Hacienda contribution.

3. What are we raising money for?

We are raising money for our children. We are giving sacrificially to help the next generation flourish in wisdom, in stature and in favor with God and people, (Luke 2:52). Our children, grandchildren and great grandchildren are growing up in a culture that is increasingly hostile to biblical values. It's not that parents don't say "No," to their children. It's that there is so much more to say "No," to these days. Social media influencers with sketchy agendas push misleading and confusing narratives. We have a better story to tell, but we must tell it in compelling ways.

The commitment of our children's ministry staff and volunteers has never been doubted. Amy Smith has been a blessing to our children with her compassion, creativity and energy for over twenty years. And from our founding, legendary volunteers like Jean Jones, Bev Edgin, and Sandra Owens have loved and taught our little ones. Dozens of others step up every Sunday to change diapers, wipe away tears, sing songs, give hugs and tell the story of Jesus. Children have always been a priority at Twickenham. The Flourish Campaign is aimed at making sure our facilities reflect this priority.

But that's not our only concern. One of the things we heard repeatedly in our appreciative inquiry sessions and in casual conversations is the need for deeper community. We long for connection, for a sense that we are not alone. This, too, has been a core Twickenham value from the very beginning. We know that we cannot flourish in isolation. And yet, our gathering spaces feel more like passageways from one part of the building to the next. These spaces need to feel more like front porches where folks can pull up a chair, sit for a spell and talk face-to-face.

4. So, what does that mean for our facilities?

We will repurpose the gym into a children's center that combines a worship space and breakout rooms with an indoor playground. Next, we will enclose the north end stairwell for all-weather access between floors, better access to the north parking lot and increased security. The first-floor gym and children's lobbies and the second-floor adult education and nursery lobbies will be expanded to create more space for connecting before and after worship. Finally, we will add a drop-off lane to the front entrance for easier access into the building.

5. What's going to happen in the gym?

- New child-friendly carpet squares will be laid over the existing hardwood floor.
- The stage will be lowered and extended to create a large-group worship space for children.
- New monitors, speakers and stage lighting will be installed.
- Acoustical panels will be added to reduce echo.
- Four breakout rooms will be enclosed along the sides of the gym for small-group sessions.
- A large, indoor playground will be installed.

6. Aren't we losing something important if we turn the gym into a children's center?

The gym has served us well for many years providing space for our annual Easter brunch and other large group gatherings. Twickenham Youth Ministry (TYM) uses it sometimes for athletic activities. And local ball teams periodically use it for practice. So, yes, repurposing the gym does bring some pain. But the mission to make disciples has to be our highest priority. Research shows that the most critical time for reaching people for Christ is between the ages of 4 and 14. The gym will have its greatest impact as a children's center, helping families raise godly children in an unfriendly culture. And it will signal to young parents who are looking for a church that Twickenham cares about children.

7. We'll still have Easter Brunch, though, right?

Yes! Even after the gym is reconfigured, it will still retain some of its multi-use capability. We may have to spread out a little more around the building (bigger lobbies will help), but we aren't giving up on brunch.

8. Were other options besides the gym considered?

Yes. Several other options were considered including adding new wings or tearing down the existing children's wing and replacing it. But the costs, starting at over \$ 8 million, were prohibitive. For less than half of that we can reconfigure the gym, more than double our gathering space, enclose the north end stairwell and add a drop-off lane at the Whitesburg Drive lobby.

9. Why are we renovating the gym when we aren't already using all the rooms in the children's wing?

Two reasons. First, other than the nurseries, Twickenham's preschool uses all the rooms on both floors every weekday during the school year. On Sundays, our children's ministry uses four of the six rooms on the children's wing first floor for pre-school kids.

Second, how we do children's ministry today is different from how it was done when the children's wing was constructed. In fact, the current wing looks much like the kind many of us attended when we were children – a long hallway lined with small classrooms. Children's centers today feature large group worship spaces equipped with up-to-date audio, video and security technology, break-out rooms for small group interaction and indoor playgrounds.

10. Where will the children go on Sundays when we start work on the gym?

We're working on that one. A lot depends on what time of year we begin work on the gym. What we do know is that any time a church undergoes renovation, you can expect some inconvenience. We will all need to make some adjustments and exercise patience. But what we get when all the dust settles will be worth it.

11. Why are we expanding the lobbies?

We need dedicated space to connect face to face. On a recent episode of NPR's All Things Considered, U.S. Surgeon General Dr. Vivek Murthy discussed America's loneliness epidemic. "In the last few decades, we've just lived through a dramatic pace of change. We move more, we change jobs more often, we are living with technology that has profoundly changed how we interact with each other."

Google "loneliness epidemic," and you'll see over six million results! We may be more digitally connected, but we are experiencing less community. That's because community requires in-person interaction. In Genesis 2:18, God said, "It is not good for the man to be alone." It wasn't good then and it isn't now. We need each other.

With the exception of the adult education lobby on the second floor, our lobbies function more like passageways than front porches. By expanding them, we create more room for members and guests to pull up a chair, sit for a while and connect. In our appreciative inquiry meetings, the need for community and connection came up repeatedly. Larger lobbies are a major factor in current church building design. And for good reason. Creating space for connection not only helps our relationships flourish, it helps address the epidemic of loneliness in our country.

12. Are we going to carry any debt when the campaign is finished?

No. We may incur some short-term debt through a construction loan, but at the end of the three-year campaign, we plan to be debt free.

13. We already have a playground outside. Why do we need one indoors?

For the same reason lots of restaurants have indoor playgrounds – all-weather availability. But it's more than that. Playgrounds are intergenerational magnets. Young parents and grandparents interact with each other when they bring their children or grandchildren to play. And having the playground indoors provides an extra level of security. Additionally, many of our small groups struggle with what to do with their children while the adults meet. An indoor playground provides a place where parents can enjoy a much-needed time of community knowing that their children are secure.

14. Why are we putting in a drop off lane at the front of the building?

Every entrance into our building is an uphill walk. Older members and those with mobility limitations often find it difficult to go from the parking lot to the building. A drop-off lane would make it easier for them to gain access.

15. The Hacienda of Hope was included in the last campaign. Why not this one?

It's impossible to overstate the impact of the work being done by Justin and Jauna Reeger and their team at the Hacienda. From meeting the most basic childcare needs of food, clothing and shelter to providing cutting edge trauma care, the mission of the Hacienda is critical.

The salaries for our Hacienda team come from our regular Sunday giving. In addition, each March, we take up a special collection to cover expenses for the children for things like food, medical care, clothes, school supplies, etc. Between our regular Sunday giving and the special contribution in March, we contribute well over \$ 500,000 a year. Our annual Ecuador giving is just one way each of us stays personally connected to this important mission, and we don't want to take that opportunity away.

The Flourish Campaign is focused on strengthening Twickenham for the future. In order to be there for the Hacienda tomorrow, we must raise up a new generation of Christians today who believe in and love that work the way we do. Our team in Ecuador fully supports the Flourish Campaign. In fact, Justin and Jauna have already made a pledge.

16. When will work begin and how long will it take?

Construction documents could start in November. Completed drawings by March, 2025. Construction would likely take 10-12 months but renovating the gym could only take half that time.

17. Why was a consultant hired to help us with the campaign instead of doing it ourselves?

A capital campaign consumes a lot of time and energy. We wanted to make sure our regular ministries continued without interruption. Plus, we used a consultant in our last campaign and it was a success. In fact, we're using the same person we used then. Jason Thompson, executive minister at the Harpeth Hills Church of Christ in Nashville, is working with us. He knows us well and we trust him.

18. Why did we choose Chapman Sisson architects?

We chose Chapman Sisson because they are a very reputable architectural firm that has been involved in numerous projects with us throughout the years. And, as people of strong faith, they love working with churches.

19. How do we submit our pledges?

The church will furnish pledge cards and contribution envelopes.

20. Who will know how much I pledge?

The people who see your regular contributions will be the same ones who track campaign pledges. That's our accountant and associate minister. As with all contributions, details will be kept in strict confidence.

21. How often do pledges need to be fulfilled?

Pledges can be honored annually, bi-annually, quarterly, monthly, or weekly depending on the desire of the donor.

22. What if my question wasn't addressed in this Q/A?

You can email your question to adrienne@twickenham.org and we will reply directly to you. We will also publish it in a later Q/A, since someone else may have had the same question. In coming weeks, we will hold some "townhall" type meetings where you can ask questions. A calendar of dates will be published soon.

Twickenham

7500 Whitesburg Drive
Huntsville, Al 35802