



ANNIVERSARY SUNDAY

November 19, 2023 at 10 AM

Red Clay Creek Presbyterian Church
500 McKennans Church Road, Wilmington DE
(302) 998-0434; www.rccpc.org

Rooted in love, Lighting the Way

Welcome to worship, welcome to Red Clay, welcome home!

Please visit the welcome cart in the Narthex to learn more about our community.

GATHER

CHIMING OF THE HOUR & LIGHTING OF THE PEACE CANDLE

WELCOME AND ANNOUNCEMENTS

One: The Lord be with you.

Many: And also with you.

*CALL TO WORSHIP (*from Lamentations 3:21-26*)

One: Let us call to mind the reason for our hope:
Because of the Lord's great love, we are not consumed, for his
compassions never fail. They are new every morning; great is your
faithfulness. I say to myself, "The Lord is my portion; therefore, I will
wait for him."

**Many: The Lord is good to those whose hope is in him, to the one who
seeks him; it is good to wait quietly for the salvation of the Lord.
Come, let us worship God – praising God and thanking God with
our voices united in song.**

*HYMN 15

All Creatures of Our God and King

*Your procession has come into view, O God, the procession of my God and my King into the sanctuary.
In front are the singers, after them the musicians; with them are ones playing tambourines... there
is the little tribe of Benjamin, leading them." (Psalm 68:24)*

*Indicates all who are able may stand

*CALL TO CONFESSION

*PRAYER OF CONFESSION

Many: Most merciful God, we confess that we have sinned against you in thought, word, and deed, by what we have done, and by what we have left undone. We have not loved you with our whole heart; we have not loved our neighbors as ourselves. We are truly sorry and we humbly repent, for the sake of your Son Jesus Christ, have mercy on us and forgive us; that we may delight in your will, and walk in your ways, to the glory of your Name. Amen.

*SUNG RESPONSE

*Choir will sing first;
congregation is invited to join chorus for the second refrain.*



Gath-ered from near and far, gath-ered in this ho - ly place,



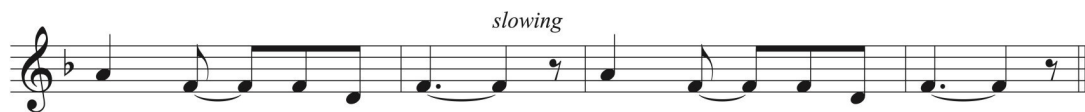
gath-ered as stran-gers and friends, gath-ered and gift-ed by grace.



Gath - ered in God's name, 'round the liv - ing Word.



Gath - ered as one fam-'ly in the name of love,



in the name of love, in the name of love.

*ASSURANCE OF PARDON

One: The mercy of the Lord is from everlasting to everlasting. May the God of mercy, who forgives us all our sins, strengthen us in all goodness, and by the power of the Holy Spirit keep us in eternal life.

Many: **Amen.**

*PASSING OF THE PEACE

Please greet those around you, wishing them “peace” or “the peace of Christ.”

CHILDREN’S MOMENT & THE LORD’S PRAYER

CONGREGATIONAL RESPONSE

During the response, Pre-K through 8th grade children who wish to attend Sunday school may proceed to their classes.

***Jesus loves me, this I know, for the Bible tells me so.
Little ones to him belong; they are weak, but he is strong.
Yes, Jesus loves me! Yes, Jesus loves me!
Yes, Jesus loves me! The Bible tells me so.***

LISTEN

PRAYER OF ILLUMINATION

SCRIPTURE

Ruth 4:13-17

ANTHEM

Holy, Holy, Holy

Gounod

SCRIPTURE

Matthew 1:1-6

SERMON

Leather Seats

Phillips

HYMN 475

Come, Thou Fount of Every Blessing

RESPOND

CALL TO PRAYER

One: God be with you.

Many: And also with you.

One: May the peace of Christ dwell in your hearts.

Many: Christ is our peace, our light, and our hope.

One: Let us pray.

PRAYERS OF THE PEOPLE

CALL TO THE OFFERING

We invite you to make an online donation or by placing a check or cash in the collection plate. Envelopes are available in the pews for specified giving. The gray envelopes are for our new Roots & Rays Fund, which goes to creative outreach projects in the community.



OFFERTORY ANTHEM

I Love to Tell the Story

Mark Hayes

Congregation is invited to join with the choir:

***I love to tell the story, for those who know it best
seem hungering and thirsting to hear it, like the rest.
And when, in scenes of glory, I sing the new, new song,
'twill be the old, old story that I have loved so long.
I love to tell the story; 'twill be my theme in glory
to tell the old, old story of Jesus and his love.***

*SUNG RESPONSE

Be Thou My Vision

***Riches I heed not, nor vain, empty praise;
thou mine inheritance, now and always;
thou and thou only first in my heart,
High King of heaven, my treasure thou art.***

*PRAYER OF DEDICATION

*HYMN 649 **Amazing Grace, How Sweet the Sound**

*BENEDICTION



Thanks to today's special musicians:

Festival Choir

Dinyar Vania, *Tenor*

Ben Andrews, *Percussion*

Bob Kissell, *Usher Captain*

Barbara Sowden, *Greeter*

Join us for Refreshments & Fellowship
in Founders Hall following the Postlude.

The flowers today are given
in loving memory of grandson Jack DeMesquita,
from Karen & Steve Beare.

Through a series of in-person messages, devotionals, and worship opportunities, we hope to keep you connected to—and nurtured by—the Red Clay Creek Presbyterian Church community. Make sure you're signed up for our Thursday eNews, Facebook, and Instagram accounts. Visit www.rccpc.org.



Red Clay Creek Presbyterian invites you
to its *Signature Services* during the coming year.

CANDLELIGHT CHRISTMAS EVE — December 24th, 2023

- ◆ Family Service with Impromptu Pageant | 3PM
- ◆ Holy Night Service with Candlelight | 8PM
- ◆ Candlelight and Communion | 11PM

JANUARY SERVICE CHALLENGE 2024

A month-long service effort that directs our intention to the needs of our community at the beginning of every year.

HOLY WEEK 2024

- ◆ Palm Sunday — March 24th | 10AM
- ◆ Maundy Thursday — March 28th | 7PM
- ◆ Good Friday — March 29th | 12PM
- ◆ Easter Sunday — March 31st | 10AM

KIRKIN' O' THE TARTAN — April 21st, 2024 | 10AM

Kirk is the Scottish word for church, so a church celebration and blessing of the tartans in our Presbyterian church honors both local and church heritage since it was the Scots who brought the Presbyterian Church to America.

OUTDOOR SERVICE & PICNIC — June 2nd, 2024 | 10AM

Join us in the back meadow for worship and our annual picnic.

HOMECOMING SUNDAY — September 8th, 2024 | 10AM

We mark our return to regular church programming with the start of our fall sermon series and Sunday School kick off.

FALL CELEBRATION SUNDAY — October 27th, 2024 | 10AM

A joyous worship service where we give Bibles to our 3rd graders and dedicate our pledges, followed by outdoor trunk-or-treating and a flag football game.

ANNIVERSARY SUNDAY — November 17th, 2024 | 10AM

We give thanks for God's many blessings and the rich history of over 300 years.

WELCOME TO RED CLAY

For LARGE print bulletins, please ask an Usher.
Restrooms are available. Just ask!

Welcome to worship, welcome to Red Clay, welcome home! Rooted in God's abiding love for all, our church is lighting the way for friendship, compassion, and service. Please join us for coffee hour in Founder's Hall after service, and stop by the welcome cart by the front entrance to learn more about our community. We hope you will worship with us again soon! If you are interested in deepening your participation, or if you just love Red Clay, it's time to think about membership! Contact Elder Nancy James at njames19966@gmail.com.

Children: Nursery care is available from 9:45 am through the conclusion of worship in Room 305 (just down the hallway from the sanctuary). After the Children's Moment, Pre-K - 2nd grade will adjourn to Room 303 and Grades 3-8 will adjourn to Room 202/204.

LEARN MORE

Check out the church website at www.rccpc.org for a calendar of events and for more on the history and other information about our church!



UPCOMING EVENT SPOTLIGHT

Stock Santa's Shop for Friendship House of Delaware.

A "Giving Tree" with ornaments will be in the Narthex beginning THIS Sunday... please choose an ornament from the tree and bring in its corresponding toy.

Final collection day will be December 10th.

RED CLAY CREEK PRESBYTERIAN — MINISTERS, STAFF & CHAIRS

Rev. Dr. Nathaniel D. Phillips, *Senior Pastor/Head of Staff*

Rev. Emily Schwenker, *Parish Associate*

Jeffrey Miller, *Director of Music*

Barbara Vanderkaats, *Assistant Director of Choral Music*

Deena Andrews, *Assistant Director of Instrumental Music and Children's Choir Director*

Lisa Nichols, *Bell Choir Director*

Rachele Gilmore, *Director of Community Life*

Ben Andrews, *Director of Christian Formation*

Jamie Russell, *Director of Children's Ministries*

Judy Lozier, *Nursery Director* ❖ Shelby Beattie, *Sunday School Teacher* ❖ Sofia Martin, *Nursery Support*

Julie Reeder, *Office Coordinator* ❖ Dinyar Vania, *Facilities Manager*

Kelley Norton, *Administrative Assistant* ❖ Anthony M. Condoluci-Smith, *Financial Associate*

Charlie Hannagan, *Technology Support*

A. Leonhard, S. Armstrong, K. Barton, A. Bloom, D. Howarth, J. Schubel, P. Worrell, *Livestream Production*

Sandy Sarjeant, *Clerk of Session* ❖ Sue Gleason, *Deacon Moderator*

Geoff and Pam Meyer, *Belong Chairs* ❖ Marcia Kelly, *Nurture Chair*

Linda Reisor, *Reach Chair* ❖ Lois Galinat, *Rejoice Chair*

Brandon Wallace, *Finance Chair* ❖ John Gast, *Personnel Chair*

Mark Cozine, *Home Chair* ❖ Scott McHenry, *Administration Chair*

Anne Ceres, *Community Partners*

A NOTE ON THE LOGO

Our church has "**roots**" in the community that date back to 1722. We have been a good neighbor when we were surrounded by farmland up until now when we are surrounded by the suburbs. Our history helps us remember a time when people helped one another out because that was the right thing to do. We hope to be a sign that this kind of community can still exist. We also believe that, in order for that community to exist, we need to stay "rooted" in the Good News that God has chosen to love us - not because of who we are, but because of who God is. We call that grace.

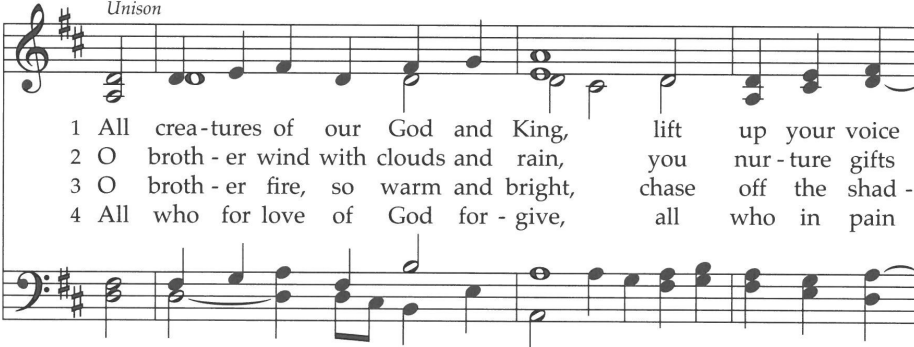
That is where the "**rays**" come in. We hope to extend our love, and the love we know from the graciousness of God, in many ways today. This means engaging in friendships with those that Jesus would have made friends with - those that feel isolated for any number of reasons. We know we will never be perfect at that, but we will try! We are especially aware that churches have long held back from friendship with others based on age, economics, sexuality, race, disability, and the list goes on. We seek to be something different than that. There are so many stories about how Jesus entered into life-affirming friendships with those that others wouldn't. We seek to be like Jesus.

Right there, in the center of it all, is the **cross**. For us, the cross is a "Tree of Life." It represents how God broke into this world to establish a new way of being alive. It symbolizes how God calls us to love with freedom, with recklessness even, if it means connecting the world to the wonder of God's transformative presence.




15 All Creatures of Our God and King

Unison



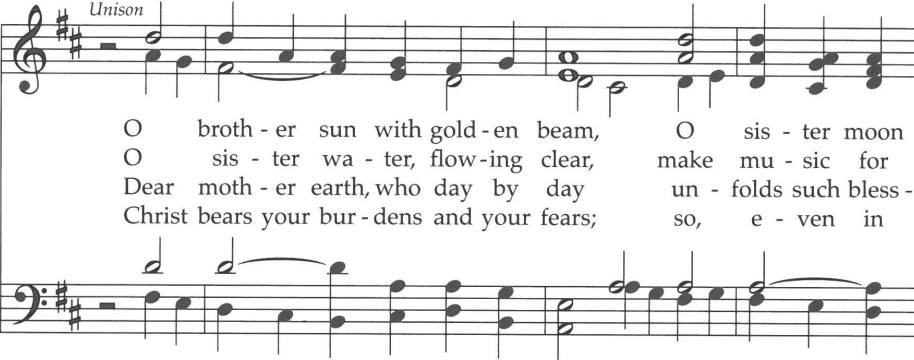
1 All crea-tures of our God and King, lift up your voice
2 O broth-er wind with clouds and rain, you nur-ture gifts
3 O broth-er fire, so warm and bright, chase off the shad-
4 All who for love of God for-give, all who in pain

Harmony



and with us sing, Al-le-lu-ia! Al-le-lu-ia!
of fruit and grain. Al-le-lu-ia! Al-le-lu-ia!
ows of the night. Al-le-lu-ia! Al-le-lu-ia!
or sor-row grieve, Al-le-lu-ia! Al-le-lu-ia!

Unison



O broth-er sun with gold-en beam, O sis-ter moon
O sis-ter wa-ter, flow-ing clear, make mu-sic for
Dear moth-er earth, who day by day un-folds such bless-
Christ bears your bur-dens and your fears; so, e-ven in

Sometimes called "The Canticle of the Sun," this cosmic roll call allows human beings to give voice to all creation. One of the earliest religious poems in the Italian language, it is made even more expansive by this broad, repetitive melody with interspersed "Alleluias."

Harmony

with sil - ver gleam, sing prais - es! Al - le - lu - ia!
 your Lord to hear. Sing prais - es! Al - le - lu - ia!
 ings on our way, sing prais - es! Al - le - lu - ia!
 the midst of tears, sing prais - es! Al - le - lu - ia!

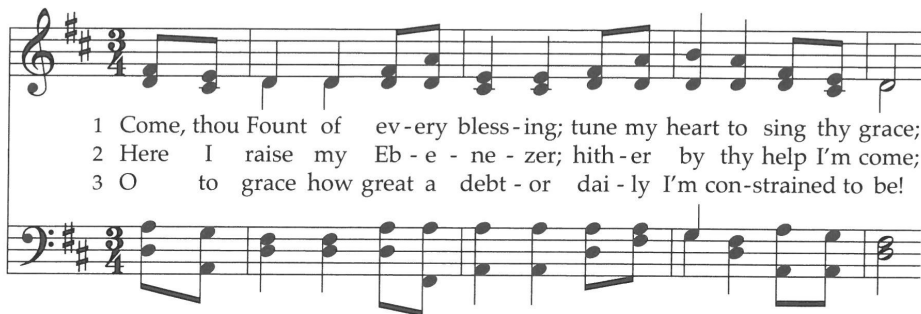
Unison

Al - le - lu - ia! Al - le - lu - ia! Al - le - lu - ia!

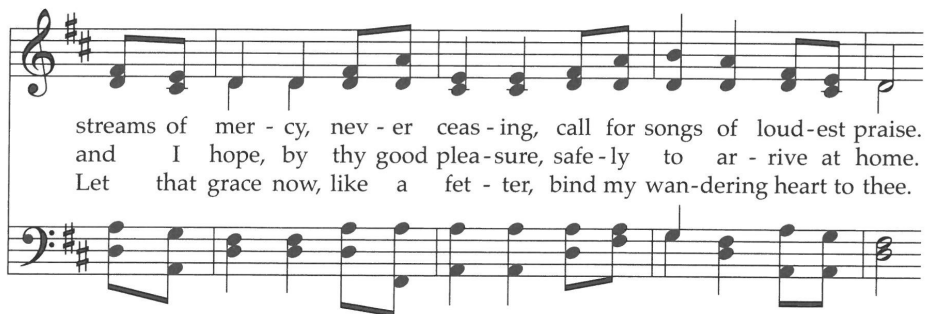
5 And you, most gentle sister death,
 waiting to hush our final breath:
 Alleluia! Alleluia!
 Since Christ our light has pierced your gloom,
 fair is the night that leads us home.
 Sing praises! Alleluia!
 Alleluia! Alleluia! Alleluia!

6 O sisters, brothers, take your part,
 and worship God with humble heart.
 Alleluia! Alleluia!
 All creatures, bless the Father, Son,
 and Holy Spirit, Three in One!
 Sing praises! Alleluia!
 Alleluia! Alleluia! Alleluia!

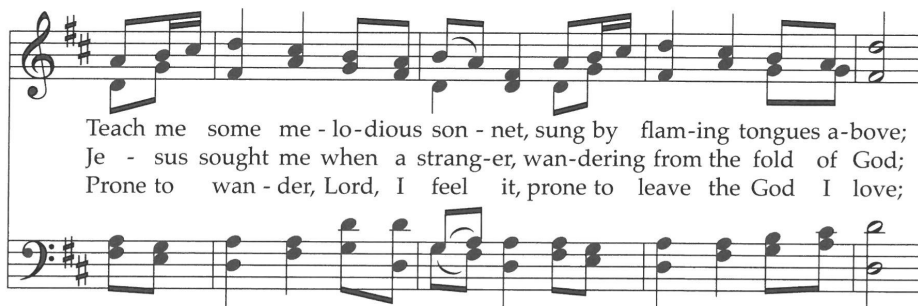
Come, Thou Fount of Every Blessing 475



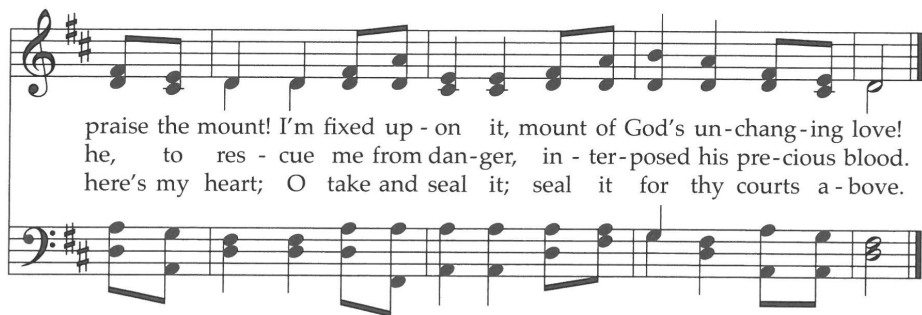
1 Come, thou Fount of ev-ery bless-ing; tune my heart to sing thy grace;
2 Here I raise my Eb - e - ne - zer; hith-er by thy help I'm come;
3 O to grace how great a debt - or dai - ly I'm con-strained to be!



streams of mer - cy, nev - er ceas - ing, call for songs of loud-est praise.
and I hope, by thy good plea-sure, safe - ly to ar - rive at home.
Let that grace now, like a fet - ter, bind my wan-dering heart to thee.



Teach me some me - lo-dious son - net, sung by flam-ing tongues a-bove;
Je - sus sought me when a strang-er, wan-dering from the fold of God;
Prone to wan - der, Lord, I feel it, prone to leave the God I love;



praise the mount! I'm fixed up - on it, mount of God's un-chang-ing love!
he, to res - cue me from dan-ger, in - ter-posed his pre-cious blood.
here's my heart; O take and seal it; seal it for thy courts a - bove.

Written for Pentecost by a British Baptist pastor, this text is full of biblical terms like "Ebenezer" (1 Samuel 7:12), Hebrew for "a stone of help" set up to give thanks for God's assistance. The tune name honors hymnal compiler Asahel Nettleton, who probably did not compose it.

649 Amazing Grace, How Sweet the Sound

1 A - maz - ing grace, how sweet the sound, that
 2 'Twas grace that taught my heart to fear, and
 3 Through man - y dan - gers, toils, and snares, I
 4 The Lord has prom - ised good to me; his
 5 When we've been there ten thou - sand years, bright

saved a wretch like me! I once was lost, but
 grace my fears re - lieved. How pre - cious did that
 have al - read - y come. 'Tis grace has brought me
 word my hope se - cures. He will my shield and
 shin - ing as the sun, we've no less days to

now am found, was blind, but now I see.
 grace ap - pear the hour I first be - lieved!
 safe thus far, and grace will lead me home.
 por - tion be as long as life en - dures.
 sing God's praise than when we'd first be - gun.

CHOCTAW

*Shilombish holitopa ma!
 Ishmminti pulla cha
 hatak ilbusha pia ha
 is pi yukpalashke.*

CREEK

*Po ya fek cha he thlat ah tet
 ah non ah cha pa kas
 cha fee kee o funnan la kus
 um e ha ta la yus.*

NAVAHO

*Nizhónígo joo bá diits' a'
 yisdáshíit' mígíí,
 lah yóóiyá, k'ad
 shénáhoosdzin,
 doo eesh'íí da ní'ée.*

As was his custom, the author wrote this hymn to accompany his sermon on 1 Chronicles 17:16-17, preached on January 1, 1773; he called it "Faith's Review and Expectation." Much of its current popularity comes from this now-familiar tune, an association that began in 1835.