



# THIRD SUNDAY OF LENT

March 3, 2024 at 10 AM

Red Clay Creek Presbyterian Church  
500 McKennans Church Road, Wilmington DE  
(302) 998-0434; [www.rccpc.org](http://www.rccpc.org)

*Rooted in Love, Lighting the Way*

*Welcome to worship, welcome to Red Clay, welcome home!*

*Please visit the welcome cart in the narthex to learn more about our community.*

## GATHER

### CHIMING OF THE HOUR

### WELCOME AND ANNOUNCEMENTS

One: This is the day that the Lord has made!

**Many: Let us rejoice and be glad in it!**

### \*CALL TO WORSHIP

Psalm 46

One: God says, "Be still and know that I am God."

**Many: "Be still and know that I am."**

One: God says, "Be still and know."

**Many: "Be still."**

One: God simply says, "Be."

**Many: Just be.**

One: God says, "Be still, and know that I am God."

**Many: Let us worship God together.**

### \*HYMN 401

### Here In This Place

\*CALL TO CONFESSION

(from Richard Rohr)

One: Lord, help us to simplify our lives, purify our hearts, and give us the discernment to know what is essential. Make us aware of your presence, and strengthen our faith, that I may be a living example of your love.

\*PRAYER OF CONFESSION

(from Wendell Berry)

**Many: Merciful God, all goes back to you,  
and so I do not desire pride of excess or power,  
but the contentments made by those who have had little:**

One: the fisherman's silence receiving the river's grace,  
the gardener's musing on rows.

**Many: I lack the peace of simple things.  
I am never wholly in place.  
I find no peace or grace.**

One: We sell the world to buy fire, our way lighted  
by angry people, and that has bent my mind  
and made me think of darkness  
and wish for the simple life of roots.

**Many: This is our confession. Amen.**

\*ASSURANCE OF PARDON

(from Wendell Berry)

One: Since God makes us free, friends: live simply.  
Every day do something that won't compute.  
Love the Lord. Love the world. Work for nothing.  
Take all that you have and be poor.

**Many: Love someone who does not deserve it.**

One: And know that you are loved by God  
even when you don't deserve it.

\*SUNG RESPONSE

Simplicity

I come in\_ sim- pli - ci-ty\_\_ long-ing for pi - e-ty\_\_ to wor-ship  
You in Spi-rit and truth, on-ly You. Lord strip it all a-way\_\_ 'till on - ly  
You re - main. \_\_ I'm com-ing back to my first love, on - ly You.

You're the rea - son I sing, the rea - son I sing. Yes, my heart will  
sing how I love You. And for - ev - er\_ I'll sing, for - ev - er\_ I'll  
sing. Yes, my heart will sing how I love\_ You.

**\*PASSING OF THE PEACE**

*Please greet those around you, wishing them “peace” or “the peace of Christ.”*

**CHILDREN’S MOMENT & THE LORD’S PRAYER**

*At the conclusion, Pre-K through 8th grade children who wish to attend Sunday school may proceed to their classes.*

# LISTEN

**CHORAL PRAYER OF ILLUMINATION**

You're the rea - son I sing, the rea - son I sing. Yes, my heart will  
sing how I love You. And for - ev - er\_ I'll sing, for - ev - er\_ I'll  
sing. Yes, my heart will sing how I love\_ You.

**SCRIPTURE**

Exodus 20:1-17

**SERMON**

It’s Complicated: Simplicity in Adoration

Rev. Chelsea Spyrès

**HYMN 760, vss. 1,2,3,4**

**Bring Many Names**

# RESPOND

## CALL TO PRAYER

One: God be with you.

**Many: And also with you.**

One: May the peace of Christ dwell in your hearts.

**Many: Christ is our peace, our light, and our hope.**

One: Let us pray.

## PRAYERS OF THE PEOPLE

## CALL TO THE OFFERING

*We invite you to make an online donation or by placing a check or cash in the collection plate. Envelopes are available in the pews for specified giving. The gray envelopes are for our new Roots & Rays Fund, which goes to creative outreach projects in the community.*



MUSICAL OFFERING      Glorify Thy Name

\*SUNG RESPONSE    Praise God, from Whom All Blessings Flow    (to alternate tune)

***Praise God, from whom all blessings flow.***

***Praise God, all creatures high and low.***

***Praise God, in Jesus fully known: Creator, Word, and Spirit one.***

\*PRAYER OF DEDICATION

\*HYMN 353      **My Hope Is Built on Nothing Less**

\*BENEDICTION



We joyfully welcome Rev. Chelsea Spyles back to our pulpit today! As most of you know, Rev. Chelsea serves as the Executive Director of Wilmington Kitchen Collective and as Pastor of Riverfront Ministries.

After working with people experiencing homelessness in Detroit, the Delaware native returned home to begin serving at Riverfront Ministries, a church that gathers outdoors for services much of the year. Chelsea loves gathering community around food and fellowship, telling stories of the food vendors and making local connections.

Thanks to today's worship participants:

Chancel Choir, *Music Ministry*

Bob Emmons & Lois Galinat, *Usher Captains*

Gail Ahrens, *Greeter*

Join us for refreshments & fellowship  
in Founders Hall following the postlude.

The chancel flowers today are given to the Glory of God.

The communion table flowers today are given in loving memory of Richard B. Friese, beloved brother of Barbara Vanderkraats and Nancy Moul, in gratitude for 3 years of prayers by Red Clay friends.

Through a series of in-person messages, devotionals, and worship opportunities, we hope to keep you connected to—and nurtured by—the Red Clay Creek Presbyterian Church community. Make sure you're signed up for our Thursday eNews, Facebook, and Instagram accounts. Visit [www.rccpc.org](http://www.rccpc.org).



Red Clay Creek Presbyterian invites you  
to its *Signature Services* during the coming year.

### **LENT & HOLY WEEK 2024**

- ◆ Ash Wednesday— February 14<sup>th</sup> | 12:30PM
- ◆ Palm Sunday — March 24<sup>th</sup> | 10AM
- ◆ Maundy Thursday — March 28<sup>th</sup> | 7PM
- ◆ Good Friday — March 29<sup>th</sup> | 12PM
- ◆ Easter Sunday — March 31<sup>st</sup> | 10AM

### **KIRKIN' O' THE TARTAN — April 21<sup>st</sup>, 2024 | 10AM**

Kirk is the Scottish word for church, so a church celebration and blessing of the tartans in our Presbyterian church honors both local and church heritage since it was the Scots who brought the Presbyterian Church to America.

### **OUTDOOR SERVICE & PICNIC — June 2<sup>nd</sup>, 2024 | 10AM**

Join us in the back meadow for worship and our annual picnic.

### **HOMECOMING SUNDAY — September 8<sup>th</sup>, 2024 | 10AM**

We mark our return to regular church programming with the start of our fall sermon series and Sunday School kick off.

### **FALL CELEBRATION SUNDAY — October 27<sup>th</sup>, 2024 | 10AM**

A joyous worship service where we give Bibles to our 3rd graders and dedicate our pledges, followed by outdoor trunk-or-treating and a flag football game.

### **ANNIVERSARY SUNDAY — November 17<sup>th</sup>, 2024 | 10AM**

We give thanks for God's many blessings and our rich history of over 300 years.

### **CANDLELIGHT CHRISTMAS EVE — December 24<sup>th</sup>, 2024**

- ◆ Family Service with Impromptu Pageant | 4PM
- ◆ Holy Night Service with Candlelight | 8PM
- ◆ Candlelight & Communion | 11PM

### **JANUARY SERVICE CHALLENGE 2025**

A month-long service effort that directs our intention to the needs of our community at the beginning of every year.

# WELCOME TO RED CLAY

For LARGE print bulletins or children's bulletins, please ask an Usher.  
Restrooms are available. Just ask!

Welcome to worship, welcome to Red Clay, welcome home! Rooted in God's abiding love for all, our church is lighting the way for friendship, compassion, and service. Please join us for coffee hour in Founder's Hall after service, and stop by the welcome cart by the front entrance to learn more about our community. We hope you will worship with us again soon! If you are interested in deepening your participation, or if you just love Red Clay, it's time to think about membership! Contact Elder Nancy James at [njames19966@gmail.com](mailto:njames19966@gmail.com).

Children: Nursery care is available from 9:45 am through the conclusion of worship in Room 305 (just down the hallway from the sanctuary). After the Children's Moment, Pre-K - 2nd grade will adjourn to Room 303 and Grades 3-8 will adjourn to Room 202/204.

## LEARN MORE

Check out the church website at [www.rccpc.org](http://www.rccpc.org) for a calendar of events and for more on the history and other information about our church!



### UPCOMING EVENT SPOTLIGHT

The Red Clay Creek Presbyterian Church's Lenten Food Drive officially begins TODAY and runs through March 24<sup>th</sup>. Help us collect food items for the Food Bank of Delaware!



## RED CLAY CREEK PRESBYTERIAN — MINISTERS, STAFF & CHAIRS

Rev. Dr. Nathaniel D. Phillips, *Senior Pastor/Head of Staff*

Rev. Emily Schwenker, *Parish Associate*

Jeffrey Miller, *Director of Music*

Barbara Vanderkraats, *Assistant Director of Choral Music*

Deena Andrews, *Assistant Director of Instrumental Music and Children's Choir Director*

Lisa Nichols, *Bell Choir Director*

Rachele Gilmore, *Director of Community Life*

Ben Andrews, *Director of Christian Formation*

Jamie Russell, *Director of Children's Ministries*

Judy Lozier, *Nursery Director* ❖ Shelby Beattie, *Sunday School Teacher* ❖ Sofia Martin, *Nursery Support*

Julie Reeder, *Office Coordinator* ❖ Dinyar Vania, *Facilities Manager*

Kelley Norton, *Administrative Assistant* ❖ Anthony M. Condoluci-Smith, *Financial Associate*

Charlie Hannagan, *Technology Support*

A. Leonhard, S. Armstrong, K. Barton, A. Bloom, D. Howarth, J. Schubel, P. Worrell, *Livestream Production*

Sandy Sarjeant, *Clerk of Session* ❖ Sue Gleason, *Deacon Moderator*

Geoff and Pam Meyer, *Belong Chairs* ❖ Nancy James, *Nurture Chair*

Linda Reisor, *Reach Chair* ❖ Lois Galinat, *Rejoice Chair*

Brandon Wallace, *Finance Chair* ❖ John Gast, *Personnel Chair*

Mark Cozine, *Home Chair* ❖ Scott McHenry, *Administration Chair*

Andrew Bloom, *Community Partners*

### A NOTE ON THE LOGO

Our church has "**roots**" in the community that date back to 1722. We have been a good neighbor when we were surrounded by farmland up until now when we are surrounded by the suburbs. Our history helps us remember a time when people helped one another out because that was the right thing to do. We hope to be a sign that this kind of community can still exist. We also believe that, in order for that community to exist, we need to stay "rooted" in the Good News that God has chosen to love us - not because of who we are, but because of who God is. We call that grace.

That is where the "**rays**" come in. We hope to extend our love, and the love we know from the graciousness of God, in many ways today. This means engaging in friendships with those that Jesus would have made friends with - those that feel isolated for any number of reasons. We know we will never be perfect at that, but we will try! We are especially aware that churches have long held back from friendship with others based on age, economics, sexuality, race, disability, and the list goes on. We seek to be something different than that. There are so many stories about how Jesus entered into life-affirming friendships with those that others wouldn't. We seek to be like Jesus.

Right there, in the center of it all, is the **cross**. For us, the cross is a "Tree of Life." It represents how God broke into this world to establish a new way of being alive. It symbolizes how God calls us to love with freedom, with recklessness even, if it means connecting the world to the wonder of God's transformative presence.





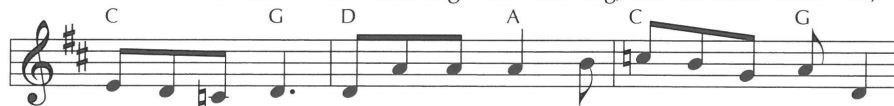
# Here in This Place

401

## Gather Us In



1 Here in this place the new light is stream-ing; now is the dark-ness  
 2 We are the young, our lives are a mys-tery. We are the old who  
 3 Here we will take the wine and the wa-ter; here we will take the  
 4 Not in the dark of build-ings con-fin-ing, not in some heav-en,



van-ished a-way; see in this space our fears and our dream-ings  
 yearn for your face. We have been sung through-out all of his-tory,  
 bread of new birth. Here you shall call your sons and your daugh-ters,  
 light years a-way: here in this place the new light is shin-ing;



brought here to you in the light of this day.  
 called to be light to the whole hu-man race.  
 call us a-new to be salt for the earth.  
 now is the king-dom, and now is the day.



Gath-er us in, the lost and for-sak-en; gath-er us in, the  
 Gath-er us in, the rich and the haugh-ty; gath-er us in, the  
 Give us to drink the wine of com-pas-sion; give us to eat the  
 Gath-er us in and hold us for-ev-er; gath-er us in and



blind and the lame; call to us now, and we shall a-wak-en;  
 proud and the strong; give us a heart, so meek and so low-ly;  
 bread that is you; nour-ish us well, and teach us to fash-ion  
 make us your own; gath-er us in, all peo-ples to-geth-er,



we shall a-rise at the sound of our name.  
 give us the cour-age to en-ter the song.  
 lives that are ho-ly and hearts that are true.  
 fire of love in our flesh and our bone.

The "you/your" mentioned in every stanza is never identified, but this 1979 hymn is clearly a corporate prayer to God on behalf of the diverse congregation who have assembled for worship, longing to be transformed and used as God's witnesses and for God's purposes.

# 760

## Bring Many Names

Capo 1: (D) (Em7) (G2) (G) (Em) (A2) (A7)  
 Eb Fm7 Ab2 Ab Fm Bb2 Bb7

1 Bring man - y names, beau - ti - ful and good,  
 2 Strong moth - er God, work - ing night and day,  
 3 Warm fa - ther God, hug - ging ev - ery child,  
 4 Old, ach - ing God, gray with end - less care,  
 5 Young, grow - ing God, ea - ger, on the move,  
 6 Great, liv - ing God, nev - er ful - ly known,

(D) (Em7) (D/F#) (Em) (Asus) (A7)  
 Eb Fm7 Eb/G Fm Bbsus Bb7

cel - e - brate, in par - a - ble and sto - ry,  
 plan - ning all the won - ders of cre - a - tion,  
 feel - ing all the strains of hu - man liv - ing,  
 calm - ly pierc - ing e - vil's new dis - guis - es,  
 say - ing no to false - hood and un - kind - ness,  
 joy - ful dark - ness far be - yond our see - ing,

(D) (Em7) (G2) (G) (Em) (A2) (A7)  
 Eb Fm7 Ab2 Ab Fm Bb2 Bb7

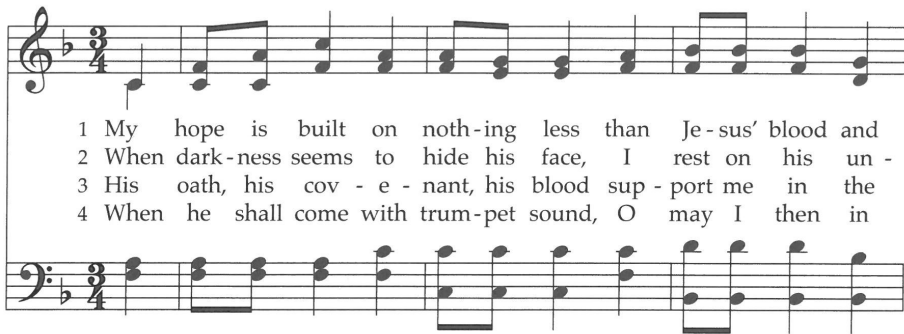
ho - li - ness in glo - ry, liv - ing, lov - ing God.  
 set - ting each e - qua - tion ge - ni - us at play:  
 car - ing and for - giv - ing till we're rec - on - ciled:  
 glad of good sur - pris - es, wis - er than de - spair:  
 cry - ing out for jus - tice, giv - ing all you have:  
 clos - er yet than breath - ing, ev - er - last - ing home:

1-5 6  
 (D) (Em) (D) (A) (G) (D/F#) (Em) (Asus)(A) (D/F#)(Em)(A) (D)  
 Eb Fm Eb Bb Ab Eb/G Fm Bbsus Bb Eb/G Fm Bb Eb

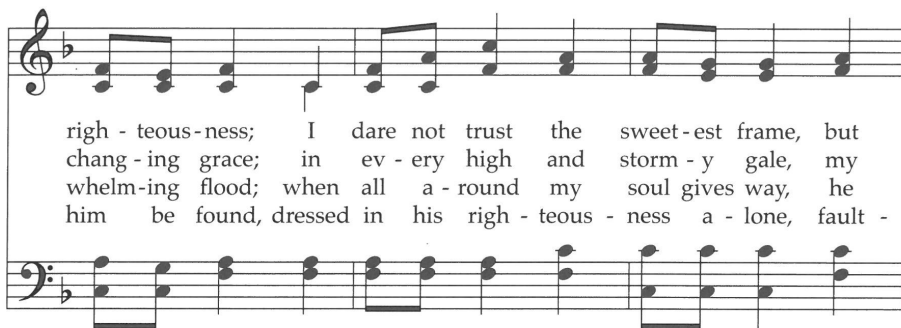
Hail and Ho - san - na! Bring man - y names!  
 Hail and Ho - san - na, strong moth - er God!  
 Hail and Ho - san - na, warm fa - ther God!  
 Hail and Ho - san - na, old, ach - ing God!  
 Hail and Ho - san - na, young, grow - ing God!  
 Hail and Ho - san - na, great, liv - ing God!

This text affirms that the images we use for God can be inspired by either gender because both males and females reflect the image and likeness of God (Genesis 1:27). Similarly, since God is with us at all stages of life, all ages hold the potential to reveal something about God.

# My Hope Is Built on Nothing Less 353

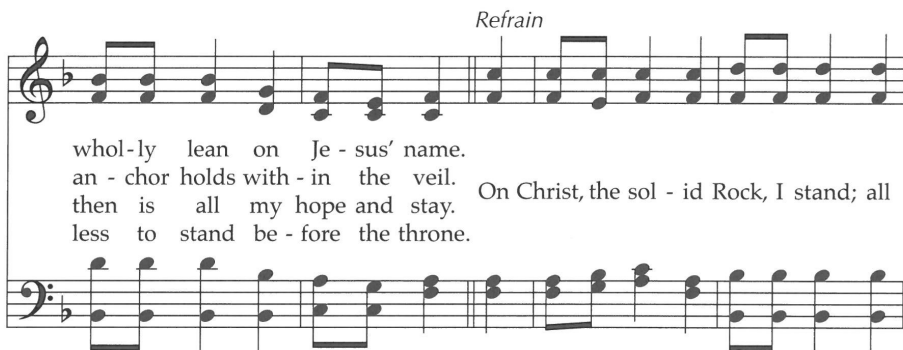


1 My hope is built on noth-ing less than Je-sus' blood and  
2 When dark-ness seems to hide his face, I rest on his un -  
3 His oath, his cov - e - nant, his blood sup - port me in the  
4 When he shall come with trum-pet sound, O may I then in



righ - teous-ness; I dare not trust the sweet-est frame, but  
chang - ing grace; in ev - ery high and storm - y gale, my  
whelm-ing flood; when all a - round my soul gives way, he  
him be found, dressed in his righ - teous - ness a - lone, fault -

*Refrain*



whol-ly lean on Je - sus' name.  
an - chor holds with - in the veil. On Christ, the sol - id Rock, I stand; all  
then is all my hope and stay.  
less to stand be - fore the throne.



oth-er ground is sink-ing sand; all oth-er ground is sink-ing sand.

This hymn develops the imagery of Jesus' remark (Matthew 7:24-27 / Luke 6:47-49) that those who believe in him and act on that belief are like someone who builds a house on a rock. The text is set to a tune created for it by a prolific 19th-century American composer and editor.