

SERVICE FOR THE LORD'S DAY

April 28, 2024 at 10 AM

Red Clay Creek Presbyterian Church
500 McKennans Church Road, Wilmington DE
(302) 998-0434; www.rccpc.org

Rooted in Love, Lighting the Way

Welcome to worship, welcome to Red Clay, welcome home!

Please visit the welcome cart in the narthex to learn more about our community.

GATHER

CHIMING OF THE HOUR

LIGHTING OF THE PEACE CANDLE

(a silent prayer)

God of Hope, on this and every day, lead us from death to life, from falsehood to truth, from despair to hope, from fear to trust. Let peace fill our hearts, our world and our universe that, together with our brothers and sisters around the world, we might dream together, pray together and work together to build one world of peace and justice for all. Amen.

PRELUDE

Morning Song of Praise

WELCOME AND ANNOUNCEMENTS

One: The Lord is risen.

Many: **He is risen indeed!**

MINUTE FOR MISSION

Sarah Junkin Woodard, Center for Development in Central America

*Indicates all who are able may stand

*CALL TO WORSHIP

One: Let us worship the eternal God,
our Creator and the source of life and love.

**Many: Let us worship Jesus Christ, the risen one;
true love made manifest.**

One: Let us worship the Holy Spirit,
renewing, inspiring, and dwelling among us.

Many: Here we find hope for tomorrow!

One: To God be all praise, honor, and glory.

Many: Alleluia! Amen!

*HYMN 14

For the Beauty of the Earth

*CALL TO CONFESSION

*PRAYER OF CONFESSION

**Many: God of hope, God of joy, God of life,
we come to you as a people hungry for good news.
We have been so dead to miracles that we have missed
the hope for tomorrow you have promised us.
We have preoccupied ourselves with small things
and have overlooked the true joy you offer each one of us.
We have been so concerned with making a living
that we miss the new life you have given to us.
Forgive us, gracious God.
Open our eyes and our minds to receive your promises,
and open our hearts and hands to share them freely.
We pray this in the name of Christ, our risen Lord. Amen.**

*ASSURANCE OF PARDON

One: Friends, believe the good news:

Many: In Jesus Christ, we are forgiven.

*SUNG RESPONSE

Great is Thy Faithfulness

(verse 1 & refrain)

*Great is thy faithfulness, O God my Father;
there is no shadow of turning with thee.
Thou changest not; thy compassions they fail not.
As thou hast been thou forever wilt be.*

***Great is thy faithfulness! Great is thy faithfulness!
Morning by morning, new mercies I see.
All I have needed thy hand hath provided.
Great is thy faithfulness, Lord unto me!***

*PASSING OF THE PEACE

Please greet those around you, wishing them “peace” or “the peace of Christ.”

CHILDREN’S MOMENT & THE LORD’S PRAYER

At the conclusion, Pre-K through 8th grade children who wish to attend Sunday school may proceed to their classes.

LISTEN

CHORAL PRAYER OF ILLUMINATION

Great is Thy Faithfulness

(verse 3 & refrain)

***Pardon for sin and a peace that endureth,
thine own dear presence to cheer and to guide,
Strength for today and bright hope for tomorrow:
blessings all mine, with ten thousand beside!***

***Great is thy faithfulness! Great is thy faithfulness!
Morning by morning, new mercies I see.
All I have needed thy hand hath provided.
Great is thy faithfulness, Lord unto me!***

SCRIPTURE

Acts 27:27-38

SERMON

Hunger Satisfied

Rev. Chelsea Spyles

HYMN 661 **Why Should I Feel Discouraged? (His Eye Is on the Sparrow)**

RESPOND

CALL TO PRAYER

One: God be with you.

Many: And also with you.

One: May the peace of Christ dwell in your hearts.

Many: Christ is our peace, our light, and our hope.

One: Let us pray.

PRAYERS OF THE PEOPLE

CALL TO THE OFFERING

We invite you to make an online donation or by placing a check or cash in the collection plate. Envelopes are available in the pews for specified giving. The gray envelopes are for our new Roots & Rays Fund, which goes to creative outreach projects in the community.



MUSICAL OFFERING

Amazing Grace

*SUNG RESPONSE Praise God, from Whom All Blessings Flow

***Praise God, from whom all blessings flow;
praise Christ, all people here below;
praise Holy Spirit evermore;
praise Triune God, whom we adore. Amen.***

*PRAYER OF DEDICATION

*HYMN 353

My Hope Is Built on Nothing Less

*BENEDICTION

POSTLUDE

A Trumpet Chorale



We joyfully welcome Rev. Chelsea Spyres back to our pulpit today! As most of you know, Rev. Chelsea serves as the Executive Director of Wilmington Kitchen Collective and as Pastor of Riverfront Ministries.

After working with people experiencing homelessness in Detroit, the Delaware native returned home to begin serving at Riverfront Ministries, a church that gathers outdoors for services much of the year. Chelsea loves gathering community around food and fellowship, telling stories of the food vendors and making local connections.

Thanks to today's worship participants:

Bell Choir, *Music Ministry*
Lois Galinat & Bob Emmons, *Usher Captains*
Jack & Sallie Akester, *Greeters*

Join us for refreshments & fellowship in Founders Hall following the postlude.

The flowers today are given in loving memory of Janice Carlson,
from Norman Carlson and family.

Through a series of in-person messages, devotionals, and worship opportunities, we hope to keep you connected to—and nurtured by—the Red Clay Creek Presbyterian Church community. Make sure you're signed up for our Thursday eNews, Facebook, and Instagram accounts. Visit www.rccpc.org.



Red Clay Creek Presbyterian invites you
to its *Signature Services* during the coming year.

OUTDOOR SERVICE & PICNIC — June 2nd, 2024 | 10AM

Join us in the back meadow for worship and our annual picnic.

SUMMER ARTS CAMP — JULY 15th-19th, 2024 | 9AM-12PM

Kids K-5 will have music, drama, visual arts, snacks, and FUN, culminating with bingo and performance night July 19th, as well as Youth Sunday on July 21st.

HOMECOMING SUNDAY — September 8th, 2024 | 10AM

We mark our return to regular church programming with the start of our fall sermon series and Sunday School kick off.

FALL CELEBRATION SUNDAY — October 27th, 2024 | 10AM

A joyous worship service where we give Bibles to our 3rd graders and dedicate our pledges, followed by outdoor trunk-or-treating and a flag football game.

ANNIVERSARY SUNDAY — November 17th, 2024 | 10AM

We give thanks for God's many blessings and our rich history of over 300 years.

CANDLELIGHT CHRISTMAS EVE — December 24th, 2024

- ◆ Family Service with Impromptu Pageant | 4PM
- ◆ Holy Night Service with Candlelight | 8PM
- ◆ Candlelight & Communion | 11PM

JANUARY SERVICE CHALLENGE 2025

A month-long service effort that directs our intention to the needs of our community at the beginning of every year.

HOLY WEEK 2025

- ◆ Maundy Thursday — April 17th | 7PM
- ◆ Good Friday — April 18th | 12PM
- ◆ Easter Sunday — April 20th | 10AM

KIRKIN' O' THE TARTAN — May 18th, 2025 | 10AM

Kirk is the Scottish word for church, so a church celebration and blessing of the tartans in our Presbyterian church honors both local and church heritage since it was the Scots who brought the Presbyterian Church to America.

WELCOME TO RED CLAY

For LARGE print bulletins or children's bulletins, please ask an Usher.
Restrooms are available. Just ask!

Welcome to worship, welcome to Red Clay, welcome home! Rooted in God's abiding love for all, our church is lighting the way for friendship, compassion, and service. Please join us for coffee hour in Founder's Hall after service, and stop by the welcome cart by the front entrance to learn more about our community. We hope you will worship with us again soon! If you are interested in deepening your participation, or if you just love Red Clay, it's time to think about membership! Contact Elder Nancy James at njames19966@gmail.com.

Here at Red Clay, we have numerous groups that are open and that welcome newcomers, including, e.g., Quilters, Crafters, "Friends and Fellowship" free luncheon for seniors, Bible study, ROMEOS ("Retired Old Men Eating Out"), Centering Prayer, "The Arcaders" social group for GenX and Millennials, Breakfast & the Bible with Pastor Nate, and Pickleball. Details can be found at www.rccpc.org!

Children: Nursery care is available from 9:45AM through the conclusion of worship in Room 305 (just down the hallway from the sanctuary). After the Children's Moment, Pre-K - 2nd grade will adjourn to Room 303 and Grades 3-8 will adjourn to Room 202/204.

UPCOMING EVENT SPOTLIGHT

Today is the last day to RSVP for our "Hope For Tomorrow" Vision Campaign kick-off on May 5th after the service. The event will feature guest speakers, uplifting music, and a complimentary lunch catered by the Wilmington Kitchen Collective. Email jamie@rccpc.org.

RED CLAY CREEK PRESBYTERIAN — MINISTERS, STAFF & CHAIRS

Rev. Dr. Nathaniel D. Phillips, *Senior Pastor/Head of Staff*

Rev. Emily Schwenker, *Parish Associate*

Jeffrey Miller, *Director of Music*

Barbara Vanderkraats, *Assistant Director of Choral Music*

Deena Andrews, *Assistant Director of Instrumental Music and Children's Choir Director*

Lisa Nichols, *Bell Choir Director*

Rachele Gilmore, *Director of Community Life*

Ben Andrews, *Director of Christian Formation*

Jamie Russell, *Director of Children's Ministries*

Judy Lozier, *Nursery Director* ❖ Shelby Beattie, *Sunday School Teacher* ❖ Sofia Martin, *Nursery Support*

Julie Reeder, *Office Coordinator* ❖ Dinyar Vania, *Facilities Manager*

Kelley Norton, *Administrative Assistant* ❖ Anthony M. Condoluci-Smith, *Financial Associate*

Charlie Hannagan, *Technology Support*

A. Leonhard, S. Armstrong, K. Barton, A. Bloom, D. Howarth, J. Schubel, P. Worrell, *Livestream Production*

Sandy Sarjeant, *Clerk of Session* ❖ Sue Gleason, *Deacon Moderator*

Geoff and Pam Meyer, *Belong Chairs* ❖ Nancy James, *Nurture Chair*

Linda Reisor, *Reach Chair* ❖ Lois Galinat, *Rejoice Chair*

Brandon Wallace, *Finance Chair* ❖ John Gast, *Personnel Chair*

Mark Cozine, *Home Chair* ❖ Scott McHenry, *Administration Chair*

Andrew Bloom, *Community Partners*

A NOTE ON THE LOGO

Our church has "**roots**" in the community that date back to 1722. We have been a good neighbor when we were surrounded by farmland up until now when we are surrounded by the suburbs. Our history helps us remember a time when people helped one another out because that was the right thing to do. We hope to be a sign that this kind of community can still exist. We also believe that, in order for that community to exist, we need to stay "rooted" in the Good News that God has chosen to love us - not because of who we are, but because of who God is. We call that grace.


That is where the "**rays**" come in. We hope to extend our love, and the love we know from the graciousness of God, in many ways today. This means engaging in friendships with those that Jesus would have made friends with - those that feel isolated for any number of reasons. We know we will never be perfect at that, but we will try! We are especially aware that churches have long held back from friendship with others based on age, economics, sexuality, race, disability, and the list goes on. We seek to be something different than that. There are so many stories about how Jesus entered into life-affirming friendships with those that others wouldn't. We seek to be like Jesus.

Right there, in the center of it all, is the **cross**. For us, the cross is a "Tree of Life." It represents how God broke into this world to establish a new way of being alive. It symbolizes how God calls us to love with freedom, with recklessness even, if it means connecting the world to the wonder of God's transformative presence.





For the Beauty of the Earth


14




1 For the beau - ty of the earth, for the glo - ry of the skies,
2 For the won - der of each hour of the day and of the night,
3 For the joy of ear and eye, for the heart and mind's de - light,
4 For the joy of hu - man love, broth - er, sis - ter, par - ent, child,
5 For thy - self, best gift di - vine to the world so free - ly given;




for the love which from our birth o - ver and a - round us lies:
hill and vale, and tree and flower, sun and moon, and stars of light:
for the mys - tic har - mo - ny link - ing sense to sound and sight:
friends on earth, and friends a - bove, for all gen - tle thoughts and mild:
for that great, great love of thine, peace on earth and joy in heaven:



Refrain

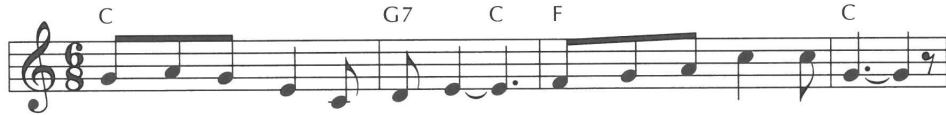


Lord of all, to thee we raise this our hymn of grate - ful praise.



661 Why Should I Feel Discouraged?

His Eye Is on the Sparrow



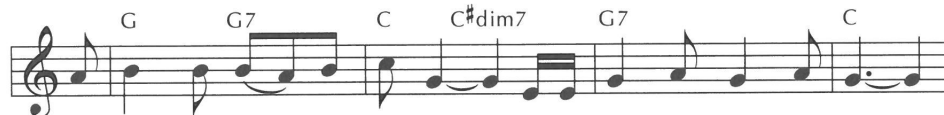
1 Why should I feel dis-cour-aged? Why should the shad-ows come?
2 "Let not your heart be trou-bled," his ten-der word I hear,
3 When-ev-er I am tempt-ed, when-ev-er clouds a-rise,



Why should my heart be lone-ly and long for heaven and home,
and rest-ing on his good-ness, I lose my doubts and fears;
when song gives place to sigh-ing, when hope with-in me dies,



when Je-sus is my por-tion? My con-stant friend is he:
though by the path he lead-eth but one step I may see:
I draw the clos-er to him; from care he sets me free:



his eye is on the spar-row, and I know he watch-es me;



his eye is on the spar-row, and I know he watch-es me.

Refrain

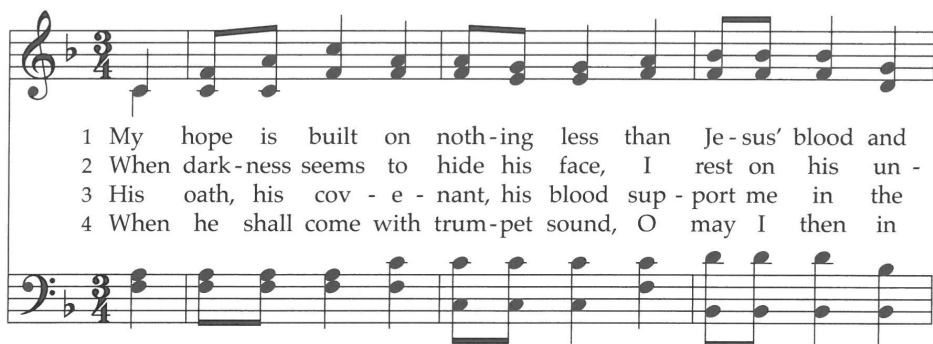
I sing be-cause I'm hap-py, (I'm hap-py) I sing be-cause I'm free, (I'm free)

This hymn based on Jesus' saying about God's care for all creatures (Matthew 10:29-30/Luke 12:6-7) began with the refrain's last line, inspired by a woman who had endured much illness. It was first sung in public at the Royal Albert Hall, London, during evangelistic services in 1905.

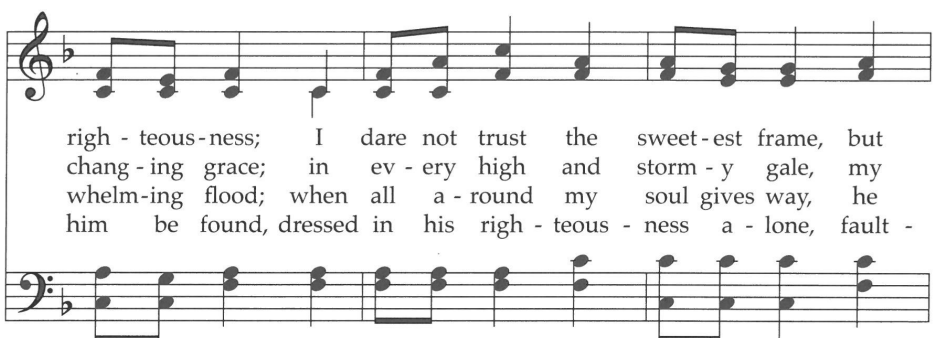
C7 F Fm C G7 C

for his eye is on the spar-row, and I know he watch-es me.

My Hope Is Built on Nothing Less 353

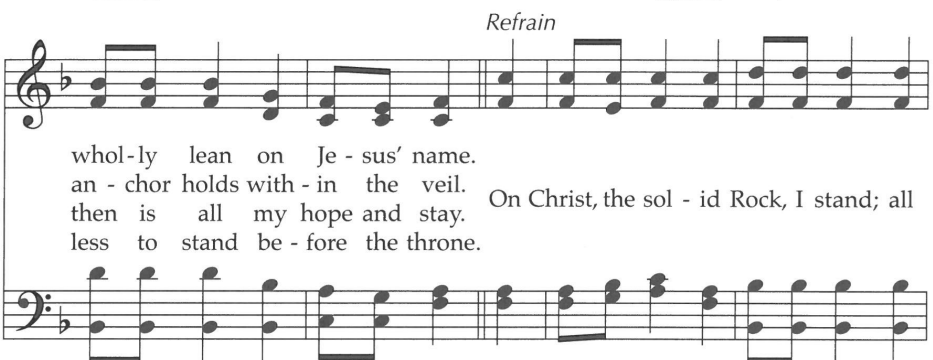


1 My hope is built on noth-ing less than Je-sus' blood and
2 When dark-ness seems to hide his face, I rest on his un -
3 His oath, his cov - e - nant, his blood sup - port me in the
4 When he shall come with trum-pet sound, O may I then in



righ - teous-ness; I dare not trust the sweet-est frame, but
chang - ing grace; in ev - ery high and storm - y gale, my
whelm-ing flood; when all a - round my soul gives way, he
him be found, dressed in his righ - teous - ness a - lone, fault -

Refrain



whol-ly lean on Je - sus' name.
an - chor holds with - in the veil. On Christ, the sol - id Rock, I stand; all
then is all my hope and stay. less to stand be - fore the throne.



oth-er ground is sink-ing sand; all oth-er ground is sink-ing sand.

This hymn develops the imagery of Jesus' remark (Matthew 7:24-27 / Luke 6:47-49) that those who believe in him and act on that belief are like someone who builds a house on a rock. The text is set to a tune created for it by a prolific 19th-century American composer and editor.