



SERVICE FOR THE LORD'S DAY

July 14, 2024 at 10 AM

Red Clay Creek Presbyterian Church
500 McKennans Church Road, Wilmington DE
(302) 998-0434; www.rccpc.org

Rooted in Love, Lighting the Way

Welcome to worship, welcome to Red Clay, welcome home!

Please visit the welcome cart in the narthex to learn more about our community.

GATHER

LIGHTING OF THE PEACE CANDLE

(a silent prayer)

God of Hope, on this and every day, lead us from death to life, from falsehood to truth, from despair to hope, from fear to trust. Let peace fill our hearts, our world and our universe that, together with our brothers and sisters around the world, we might dream together, pray together and work together to build one world of peace and justice for all. Amen.

CHIMING OF THE HOUR

WELCOME AND ANNOUNCEMENTS

One: The Lord be with you.

Many: **And also with you.**

COMMISSIONING OF SUMMER ARTS CAMP STAFF & VOLUNTEERS

Ben Andrews, Deena Andrews, Karen Caldas, Skyler Cozine, Anna Dzielak, Ella Dzielak, Christine Fischer, Kate Flowers, Barb Fox, John Gast, Rachele Gilmore, Darlyn Green Kocher, Mary Ellen Gruber, Madelyn Haggerty, Holly Haggerty, Bob Hanes, Paige Hanna, Ellen Hinrichs, Gianna Howard, Nathan Huber, Bonnie Hudson, Nancy James, Meredith Jones, Myvizihi Karunanidhi, Brooke Kennedy, Susan Leininger, Al Leonhard, Amanda Munley, Linda Neel, Liz Phung, Linda Reisor, Katie Riordan, Jada Roach, Jamie Russell, Melissa Silengo, Barbara Sowden, Barb Tostrup, Gaby Torres, Judi VanderWerff, Heather Warren, Tom Whipple, Dinyar Vania

*CALL TO WORSHIP

(based on 1 Peter 2:9-10)

One: Come, people of God! Let us sing the praises of the One who has called us out of darkness into his marvelous light!

Many: **For once we were not a people at all, but now we are God's people! Let's worship God together.**

*HYMN 307

God of Grace and God of Glory

*CALL TO CONFESSION

One: The proof of God's amazing love is this: While we were yet sinners Christ died for us. Because we have faith in him, we dare to approach God with confidence. (*Romans 5:8, Hebrews 4:16*) In faith and penitence, let us confess our sin before God and one another.

*PRAYER OF CONFESSION

(based on 1 Peter 4:10)

One: Holy One, we long to be faithful stewards of your abundant grace. To serve each other in love and humility. To serve your world with wisdom and energy.

Many: **Forgive us when we stumble over pride, when our words and actions are not guided by love. Turn our hearts when we act in folly. Restore our energy when it is gone. Sometimes, many times, O God, our efforts fail. But your abundant grace is strong and eternal, and forgiveness is ours through Jesus Christ. Thanks be to God. Amen.**

*ASSURANCE OF PARDON

(based on 1 Peter 2, *The Message*)

One: Once you were lost sheep with no idea who you were or where you were going. But no longer! Through Jesus Christ, things have been set right with God. He used his servant body to carry our sins to the Cross so we could be rid of sin, free to live the right way. His wounds become your healing. Now you are named and kept for good by the Shepherd of your souls. Thanks be to God!

*SUNG RESPONSE

Lord, Prepare Me (Sanctuary)

(Hymn 701; sing twice)

***Lord, prepare me to be a sanctuary, pure and holy, tried and true.
With thanksgiving, I'll be a living sanctuary for you.***

*PASSING OF THE PEACE

Please greet those around you, wishing them “peace” or “the peace of Christ.”

CHILDREN’S MOMENT & THE LORD’S PRAYER

At the conclusion, Pre-K through 8th grade children who wish to attend Sunday school may proceed to their classes.

MUSICAL OFFERING Fairest, Lord Jesus

LISTEN

CHORAL PRAYER OF ILLUMINATION Lord, Prepare Me (Sanctuary)

*Lord, prepare me to be a sanctuary, pure and holy, tried and true.
With thanksgiving, I’ll be a living sanctuary for you.*

SCRIPTURE 1 Peter 2:4-10

SERMON The Letters: Mint Chocolate Chip Pastor Nate

HYMN 465 **What a Friend We Have in Jesus**

RESPOND

CALL TO PRAYER

One: God be with you.

Many: And also with you.

One: May the peace of Christ dwell in your hearts.

Many: Christ is our peace, our light, and our hope.

One: Let us pray.

PRAYERS OF THE PEOPLE

CALL TO THE OFFERING

We invite you to make an online donation or by placing a check or cash in the collection plate. Envelopes are available in the pews for specified giving. The gray envelopes are for our new Roots & Rays Fund, which goes to creative outreach projects in the community.



MUSICAL OFFERING Lord of the Dance (I Danced in the Morning)

*SUNG RESPONSE God, Whose Giving Knows No Ending

***God, whose giving knows no ending, from your rich and endless store,
nature's wonder, Jesus' wisdom, costly cross, grave's shattered door:
Gifted by you, we turn to you, offering up ourselves in praise;
thankful song shall rise forever, gracious donor of our days.***

*PRAYER OF DEDICATION

*HYMN 295 **Go to the World!**

*BENEDICTION

May you love God so much that you love nothing too much, and may
you fear God enough that you fear nothing at all.

When we think of our love for God, it calls us to let go of the many attachments that prevent us from truly loving others. When we consider the fear of the Lord, as described in Proverbs as 'the beginning of wisdom,' let it not be a fear of punishment, but a deep wonder and reverence for God's protective majesty.

POSTLUDE

In Thee Is Gladness

arr. Joanne Hench



Thanks to today's worship participants:

Joanne Hench, *Music Ministry*
Nancy James, *Usher Captain*
Melissa Levy, *Greeter*

Join us for refreshments & fellowship in Founders Hall following the postlude.

The flowers today are given in loving memory of my mother, Kathleen T. Barton,
born July 10, 1931, baptized, confirmed, & married at RCCPC,
from Keith Barton.

The red rose in the chancel this morning is in celebration of the birth of
June Sylvie Tobin on June 23, 2024. She is daughter of Kelsey & Patrick Tobin,
granddaughter of Bret & Mary Jane Lanan, and great granddaughter of Joyce Lanan.
What a wonderful blessing!

Through a series of in-person messages, devotionals, and worship opportunities,
we hope to keep you connected to—and nurtured by—the Red Clay Creek
Presbyterian Church community. Make sure you're signed up for our Thursday
eNews, Facebook, and Instagram accounts. Visit www.rccpc.org.



Red Clay Creek Presbyterian invites you
to its *Signature Services* during the coming year.

SUMMER ARTS CAMP — JULY 15th-19th, 2024 | 9AM-12PM

Kids K-5 will have music, drama, visual arts, snacks, and FUN, culminating with bingo and performance night July 19th, as well as Youth Sunday on July 21st.

HOMECOMING SUNDAY — September 8th, 2024 | 10AM

We mark our return to regular church programming with the start of our fall sermon series and Sunday School kick off.

FALL CELEBRATION SUNDAY — October 27th, 2024 | 10AM

A joyous worship service where we give Bibles to our 3rd graders and dedicate our pledges, followed by outdoor trunk-or-treat and a flag football game.

ANNIVERSARY SUNDAY — November 17th, 2024 | 10AM

We give thanks for God's many blessings and our rich history of over 300 years.

CANDLELIGHT CHRISTMAS EVE — December 24th, 2024

- ◆ Family Service with Impromptu Pageant | 4PM
- ◆ Holy Night Service with Candlelight | 8PM
- ◆ Candlelight & Communion | 11PM

JANUARY SERVICE CHALLENGE 2025

A month-long service effort that directs our intention to the needs of our community at the beginning of every year.

HOLY WEEK 2025

- ◆ Maundy Thursday — April 17th | 7PM
- ◆ Good Friday — April 18th | 12PM
- ◆ Easter Sunday — April 20th | 10AM

KIRKIN' O' THE TARTAN — May 18th, 2025 | 10AM

Kirk is the Scottish word for church, so a church celebration and blessing of the tartans in our Presbyterian church honors both local and church heritage since it was the Scots who brought the Presbyterian Church to America.

OUTDOOR SERVICE & PICNIC — June 1st, 2025 | 10AM

Join us in the back meadow for worship and our annual picnic.

WELCOME TO RED CLAY

For LARGE print bulletins or children's bulletins, please ask an Usher.
Restrooms are available. Just ask!

Welcome to worship, welcome to Red Clay, welcome home! Rooted in God's abiding love for all, our church is lighting the way for friendship, compassion, and service. Please join us for coffee hour in Founder's Hall after service, and stop by the welcome cart by the front entrance to learn more about our community. We hope you will worship with us again soon! If you are interested in deepening your participation, or if you just love Red Clay, it's time to think about membership! Contact Elder Nancy James at njames19966@gmail.com.

Here at Red Clay, we have numerous groups that are open and that welcome newcomers, including, e.g., Quilters, Crafters, "Friends and Fellowship" free luncheon for seniors, Bible study, ROMEOs ("Retired Old Men Eating Out"), Centering Prayer, "The Arcaders" social group for GenX and Millennials, Breakfast & the Bible with Pastor Nate, and Pickleball. Details can be found at www.rccpc.org!

Children: Nursery care is available from 9:45AM through the conclusion of worship in Room 305 (just down the hallway from the sanctuary). After the Children's Moment, Pre-K - 2nd grade will adjourn to Room 303 and Grades 3-8 will adjourn to Room 202/204.

UPCOMING EVENT SPOTLIGHT

Red Clay BINGO Night: Friday, July 19th

Join us as we celebrate the end of our Summer Arts Camp!

Children will be performing and all will test their luck at BINGO! Doors open at 6:30 pm & games start at 7:00 pm.

All proceeds will help fund Summer Arts Camp for 2025.

RED CLAY CREEK PRESBYTERIAN — MINISTERS, STAFF & CHAIRS

Rev. Dr. Nathaniel D. Phillips, *Senior Pastor/Head of Staff*

Rev. Emily Schwenker, *Parish Associate*

Rev. Dr. Philip Jones, *Parish Associate*

Jeffrey Miller, *Director of Music*

Barbara Vanderkraats, *Assistant Director of Choral Music*

Deena Andrews, *Assistant Director of Instrumental Music and Children's Choir Director*

Lisa Nichols, *Bell Choir Director*

Rachele Gilmore, *Director of Community Life*

Ben Andrews, *Director of Christian Formation*

Jamie Russell, *Director of Children's Ministries*

Judy Lozier, *Nursery Director* ❖ Shelby Beattie, *Sunday School Teacher* ❖ Sofia Martin, *Nursery Support*

Julie Reeder, *Office Coordinator* ❖ Dinyar Vania, *Facilities Manager*

Kelley Norton, *Administrative Assistant* ❖ Anthony M. Condoluci-Smith, *Financial Associate*

Charlie Hannagan, *Technology Support*

A. Leonhard, S. Armstrong, K. Barton, A. Bloom, D. Howarth, J. Schubel, P. Worrell, *Livestream Production*

Sandy Sarjeant, *Clerk of Session* ❖ Sue Gleason, *Deacon Moderator*

Geoff and Pam Meyer, *Belong Chairs* ❖ Nancy James, *Nurture Chair*

Linda Reisor, *Reach Chair* ❖ Lois Galinat, *Rejoice Chair*

Brandon Wallace, *Finance Chair* ❖ John Gast, *Personnel Chair*

Mark Cozine, *Home Chair* ❖ Scott McHenry, *Administration Chair*

Andrew Bloom, *Community Partners*

A NOTE ON THE LOGO

Our church has "**roots**" in the community that date back to 1722. We have been a good neighbor when we were surrounded by farmland up until now when we are surrounded by the suburbs. Our history helps us remember a time when people helped one another out because that was the right thing to do. We hope to be a sign that this kind of community can still exist. We also believe that, in order for that community to exist, we need to stay "**rooted**" in the Good News that God has chosen to love us - not because of who we are, but because of who God is. We call that grace.

That is where the "**rays**" come in. We hope to extend our love, and the love we know from the graciousness of God, in many ways today. This means engaging in friendships with those that Jesus would have made friends with - those that feel isolated for any number of reasons. We know we will never be perfect at that, but we will try! We are especially aware that churches have long held back from friendship with others based on age, economics, sexuality, race, disability, and the list goes on. We seek to be something different than that. There are so many stories about how Jesus entered into life-affirming friendships with those that others wouldn't. We seek to be like Jesus.

Right there, in the center of it all, is the **cross**. For us, the cross is a "Tree of Life." It represents how God broke into this world to establish a new way of being alive. It symbolizes how God calls us to love with freedom, with recklessness even, if it means connecting the world to the wonder of God's transformative presence.



307 God of Grace and God of Glory

1 God of grace and God of glo - ry, on thy peo - ple
 2 Lo! the hosts of e - vil round us scorn thy Christ, as -
 3 Cure thy chil - dren's war - ring mad - ness; bend our pride to
 4 Save us from weak res - ig - na - tion to the e - vils

pour thy power; crown thine an - cient chur - ch's sto - ry; bring its
 sail his ways! From the fears that long have bound us free our
 thy con - trol; shame our wan - ton, self - ish glad - ness, rich in
 we de - plore. Let the gift of thy sal - va - tion be our

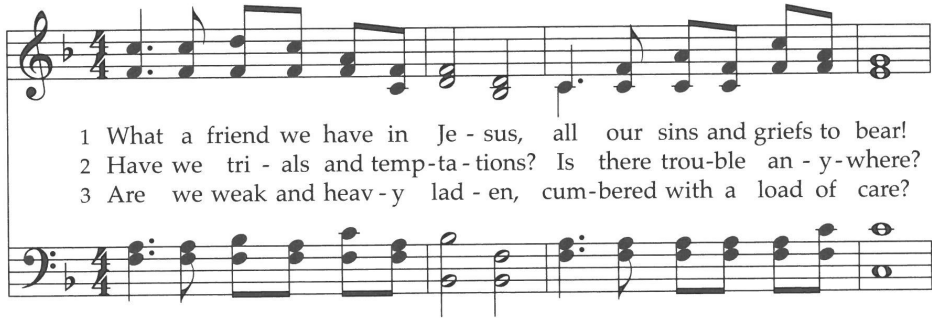
bud to glo - rious flower. Grant us wis - dom, grant us cour - age,
 hearts to faith and praise. Grant us wis - dom, grant us cour - age,
 things and poor in soul. Grant us wis - dom, grant us cour - age,
 glo - ry ev - er - more. Grant us wis - dom, grant us cour - age,

for the fac - ing of this hour, for the fac - ing of this hour.
 for the liv - ing of these days, for the liv - ing of these days.
 lest we miss thy king - dom's goal, lest we miss thy king - dom's goal.
 serv - ing thee whom we a - dore, serv - ing thee whom we a - dore.


This stirring hymn used at the opening of Riverside Church in New York in 1930 was penned by its widely-known and influential pastor, and it has gained a firm place in English-language hymnals around the world. The Welsh tune name honors the Rhondda Valley in Glamorganshire.

465 What a Friend We Have in Jesus

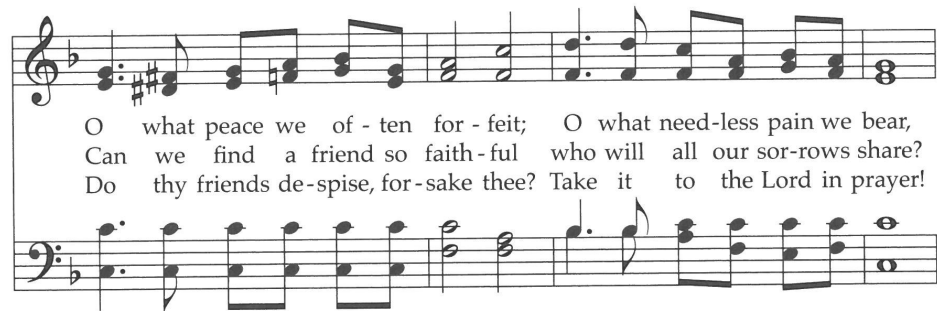
죄짐맡은 우리구주



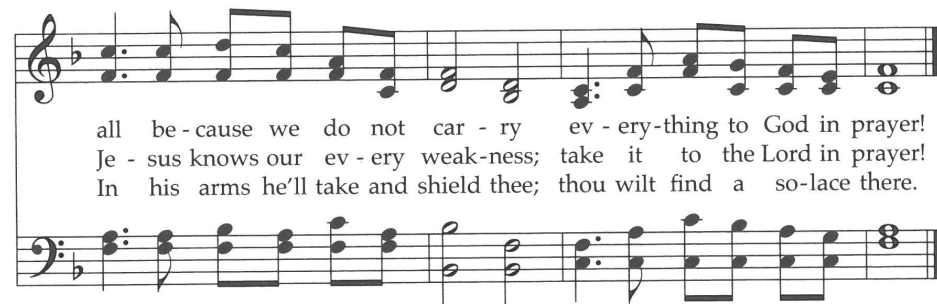
1 What a friend we have in Je - sus, all our sins and griefs to bear!
2 Have we tri - als and temp-ta - tions? Is there trou-ble an - y-where?
3 Are we weak and heav - y lad - en, cum-bere'd with a load of care?



What a priv - i - lege to car - ry ev - ery-thing to God in prayer!
We should nev - er be dis - cour - aged; take it to the Lord in prayer!
Pre - cious Sav - ior, still our ref - uge; take it to the Lord in prayer!



O what peace we of - ten for - feit; O what need - less pain we bear,
Can we find a friend so faith - ful who will all our sor - rows share?
Do thy friends de - spise, for - sake thee? Take it to the Lord in prayer!



all be - cause we do not car - ry ev - ery-thing to God in prayer!
Je - sus knows our ev - ery weak - ness; take it to the Lord in prayer!
In his arms he'll take and shield thee; thou wilt find a so - lace there.

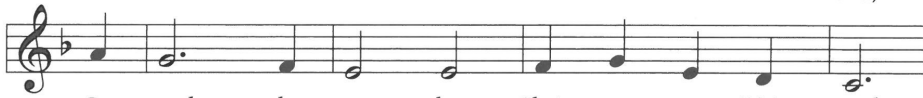
This text was written by an Irish-born immigrant to Canada to comfort his mother in Ireland when she was going through a time of special sorrow. The role of prayer as a source of strength and consolation is underscored by its repeated use as a rhyme word in all three stanzas.

Go to the World!

295



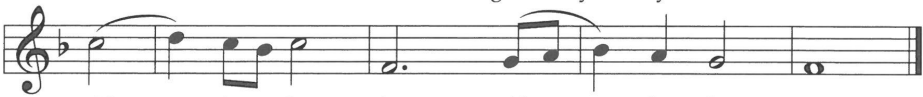
1 Go to the world! Go in - to all the earth.
2 Go to the world! Go in - to ev - ery place.
3 Go to the world! Go strug - gle, bless, and pray;
4 Go to the world! Go as the ones I send,



Go preach the cross where Christ re - news life's worth,
Go live the word of God's re - deem - ing grace.
the nights of tears give way to joy - ous day.
for I am with you till the age shall end,



bap - tiz - ing as the sign of our re - birth.
Go seek God's pres - ence in each time and space.
As ser - vant church, you fol - low Christ's own way.
when all the hosts of glo - ry cry "A - men!"



Al - le - lu - ia. Al - le - lu - ia.

Based on Christ's great commission (Matthew 28:19-20), this text was written for a Convocation of Emmanuel College in Toronto, the largest theological school of the United Church of Canada, a denomination formed by the union of Methodists, Congregationalists, and Presbyterians.