

SERVICE FOR THE LORD'S DAY

August 18, 2024 at 10 AM



Red Clay Creek Presbyterian Church
500 McKennans Church Road, Wilmington DE
(302) 998-0434; www.rccpc.org

Rooted in Love, Lighting the Way

Welcome to worship, welcome to Red Clay, welcome home!

Please visit the welcome cart in the narthex to learn more about our community.

GATHER

LIGHTING OF THE PEACE CANDLE

(a silent prayer)

God of Hope, on this and every day, lead us from death to life, from falsehood to truth, from despair to hope, from fear to trust. Let peace fill our hearts, our world and our universe that, together with our brothers and sisters around the world, we might dream together, pray together and work together to build one world of peace and justice for all. Amen.

CHIMING OF THE HOUR

WELCOME AND ANNOUNCEMENTS

One: The Lord be with you.

Many: **And also with you.**

RECEPTION OF NEW MEMBERS

Eric & Isabel Sanford

Many: **We give thanks for all that God has already given you and we welcome you in Christian love.**

*CALL TO WORSHIP

(inspired by 1 John 4:7)

One: Jesus offers a new-old commandment,

Many: **that we should love each other.**

One: With the incredible power of God's love for us, we can... we must

(continued)

Many: love one another.
One: Come, children of God, let us love one another.
Many: Let us worship God who is love!

*HYMN 664

Morning Has Broken

*CALL TO CONFESSION

One: Beloved, we are God's children now, but what we will be in the fullness of our time has not been revealed. What we do know is this: we will be like Jesus the Christ and saints of God. Let us consider how Jesus was revealed among us and pray to be more like the Christ in every way.

*PRAYER OF CONFESSION

(inspired by 1 John 3:1-3)

One: Jesus embodied the unconditional love of God...
Many: **We pray, may we be more like Jesus.**
One: Jesus fed those who were hungry...
Many: **We pray, may we be more like Jesus.**
One: Jesus drew near to those living on the margins and excluded...
Many: **We pray, may we be more like Jesus.**
One: Jesus brought healing and wholeness to those in need...
Many: **We pray, may we be more like Jesus.**
One: Jesus hungered and thirsted for righteousness...
Many: **We pray, may we be more like Jesus.**

*ASSURANCE OF PARDON

One: Beloved, through the love shown to us by Jesus, we can be sure that we are God's children now. The Spirit of Christ is among us in this gathering and the nature of Christ is revealed within us. We are becoming more and more like Christ each day. Therefore, let us live joyfully as God's people; saints and instruments of God's way.
Many: **Amen.**

*SUNG RESPONSE

Lord, Prepare Me (Sanctuary)

(Hymn 701; sing twice)

***Lord, prepare me to be a sanctuary, pure and holy, tried and true.
With thanksgiving, I'll be a living sanctuary for you.***

*PASSING OF THE PEACE

Please greet those around you, wishing them "peace" or "the peace of Christ."

CHILDREN'S MOMENT & THE LORD'S PRAYER

At the conclusion, Pre-K through 8th grade children who wish to attend Sunday school may proceed to their classes.

LISTEN

CHORAL PRAYER OF ILLUMINATION

Lord, Prepare Me (Sanctuary)

***Lord, prepare me to be a sanctuary, pure and holy, tried and true.
With thanksgiving, I'll be a living sanctuary for you.***

SCRIPTURE

1 John 4:16b-21

SERMON

The Letters: Fresco Family

Pastor Nate

To learn more about the fresco that Pastor Nate mentions in his sermon, view the documentary "Theirs is the Kingdom" on Amazon.



HYMN

10,000 Reasons (Bless the Lord)

Chorus

Bless the Lord, O my soul, O - my soul;
Wor-ship His ho - ly name. Sing like nev - er be-fore,
O my soul; I'll wor-ship Your ho - ly name.

Verses

*The sun comes up, it's a new day dawning
It's time to sing Your song again
Whatever may pass and whatever lies before me
Let me be singing, when the evening comes (chorus)*

*You're rich in love, and You're slow to anger
Your name is great, and Your heart is kind
For all Your goodness I will keep on singing
Ten thousand reasons for my heart to find (chorus)*

*And on that day when my strength is failing
The end draws near and my time has come
Still my soul will sing Your praise unending
Ten thousand years and then forevermore (chorus)*

RESPOND

CALL TO PRAYER

One: God be with you.

Many: **And also with you.**

One: May the peace of Christ dwell in your hearts.

Many: **Christ is our peace, our light, and our hope.**

One: Let us pray.

PRAYERS OF THE PEOPLE

CALL TO THE OFFERING

We invite you to make an online donation or by placing a check or cash in the collection plate. Envelopes are available in the pews for specified giving. The gray envelopes are for our new Roots & Rays Fund, which goes to creative outreach projects in the community.



*SUNG RESPONSE God, Whose Giving Knows No Ending

***God, whose giving knows no ending, from your rich and endless store,
nature's wonder, Jesus' wisdom, costly cross, grave's shattered door:
Gifted by you, we turn to you, offering up ourselves in praise;
thankful song shall rise forever, gracious donor of our days.***

*PRAYER OF DEDICATION

*HYMN 353 **My Hope Is Built on Nothing Less**

*BENEDICTION

May you love God so much that you love nothing too much, and may
you fear God enough that you fear nothing at all.

When we think of our love for God, it calls us to let go of the many attachments that prevent us from truly loving others. When we consider the fear of the Lord, as described in Proverbs as 'the beginning of wisdom,' let it not be a fear of punishment, but a deep wonder and reverence for God's protective majesty.



Thanks to today's worship participants:

Bob Kissell, *Usher Captain*
Ellen Hinrichs, *Greeter*

Join us for refreshments & fellowship in Founders Hall following the postlude.

The flowers today are given to the Glory of God.



Red Clay Creek Presbyterian invites you
to its *Signature Services* during the coming year.

HOMECOMING SUNDAY — September 8th, 2024 | 10AM

We mark our return to regular church programming with the start of our fall sermon series and Sunday School kick off.

FALL CELEBRATION SUNDAY — October 27th, 2024 | 10AM

A joyous worship service where we give Bibles to our 3rd graders and dedicate our pledges, followed by outdoor trunk-or-treat and a flag football game.

ANNIVERSARY SUNDAY — November 17th, 2024 | 10AM

We give thanks for God's many blessings and our rich history of over 300 years.

CANDLELIGHT CHRISTMAS EVE — December 24th, 2024

- ◆ Family Service with Impromptu Pageant | 4PM
- ◆ Holy Night Service with Candlelight | 8PM
- ◆ Candlelight & Communion | 11PM

JANUARY SERVICE CHALLENGE 2025

A month-long service effort that directs our intention to the needs of our community at the beginning of every year.

HOLY WEEK 2025

- ◆ Maundy Thursday — April 17th | 7PM
- ◆ Good Friday — April 18th | 12PM
- ◆ Easter Sunday — April 20th | 10AM

KIRKIN' O' THE TARTAN — May 18th, 2025 | 10AM

Kirk is the Scottish word for church, so a church celebration and blessing of the tartans in our Presbyterian church honors both local and church heritage since it was the Scots who brought the Presbyterian Church to America.

OUTDOOR SERVICE & PICNIC — June 1st, 2025 | 10AM

Join us in the back meadow for worship and our annual picnic.

SUMMER ARTS CAMP — JULY 14th-18th, 2025 | 9AM-12PM

Kids K-5 will have music, drama, visual arts, snacks, and FUN, culminating with bingo and performance night July 18th, as well as Youth Sunday on July 20th.

WELCOME TO RED CLAY

For LARGE print bulletins or children's bulletins, please ask an Usher.
Restrooms are available. Just ask!

Welcome to worship, welcome to Red Clay, welcome home! Rooted in God's abiding love for all, our church is lighting the way for friendship, compassion, and service. Please join us for coffee hour in Founder's Hall after service, and stop by the welcome cart by the front entrance to learn more about our community. We hope you will worship with us again soon! If you are interested in deepening your participation, or if you just love Red Clay, it's time to think about membership! Contact Elder Nancy James at njames19966@gmail.com.

Here at Red Clay, we have numerous groups that are open and that welcome newcomers, including, e.g., Quilters, Crafters, "Friends and Fellowship" free luncheon, Bible study, ROMEOs ("Retired Old Men Eating Out"), Centering Prayer, "The Arcaders" social group for GenX and Millennials, Breakfast & the Bible with Pastor Nate, and Pickleball. Details can be found at www.rcpc.org!

Children: Nursery care is available from 9:45AM through the conclusion of worship in Room 305 (just down the hallway from the sanctuary). After the Children's Moment, Pre-K - 2nd grade will adjourn to Room 303 and Grades 3-8 will adjourn to Room 202/204.



UPCOMING EVENT SPOTLIGHT

Next Week on August 25 is Sundaes Sunday!

Join us in Founders Hall after worship for our annual Sundaes Sunday event! Everyone gets a complimentary sundae with all the trimmings. Enjoy this sweet time of fellowship and fun!

RED CLAY CREEK PRESBYTERIAN — MINISTERS, STAFF & CHAIRS

Rev. Dr. Nathaniel D. Phillips, *Senior Pastor/Head of Staff*

Rev. Emily Schwenker, *Parish Associate*

Rev. Dr. Philip Jones, *Parish Associate*

Jeffrey Miller, *Director of Music*

Barbara Vanderkraats, *Assistant Director of Choral Music*

Deena Andrews, *Assistant Director of Instrumental Music and Children's Choir Director*

Lisa Nichols, *Bell Choir Director*

Rachele Gilmore, *Director of Community Life*

Ben Andrews, *Director of Christian Formation*

Jamie Russell, *Director of Children's Ministries*

Judy Lozier, *Nursery Director* ❖ Shelby Beattie, *Sunday School Teacher* ❖ Sofia Martin, *Nursery Support*

Julie Reeder, *Office Coordinator* ❖ Dinyar Vania, *Facilities Manager*

Kelley Norton, *Administrative Assistant* ❖ Anthony M. Condoluci-Smith, *Financial Associate*

Charlie Hannagan, *Technology Support*

A. Leonhard, S. Armstrong, K. Barton, A. Bloom, D. Howarth, J. Schubel, P. Worrell, *Livestream Production*

Sandy Sarjeant, *Clerk of Session* ❖ Sue Gleason, *Deacon Moderator*

Geoff and Pam Meyer, *Belong Chairs* ❖ Nancy James, *Nurture Chair*

Linda Reisor, *Reach Chair* ❖ Lois Galinat, *Rejoice Chair*

Brandon Wallace, *Finance Chair* ❖ John Gast, *Personnel Chair*

Mark Cozine, *Home Chair* ❖ Scott McHenry, *Administration Chair*

Andrew Bloom, *Community Partners*

A NOTE ON THE LOGO

Our church has "**roots**" in the community that date back to 1722. We have been a good neighbor when we were surrounded by farmland up until now when we are surrounded by the suburbs. Our history helps us remember a time when people helped one another out because that was the right thing to do. We hope to be a sign that this kind of community can still exist. We also believe that, in order for that community to exist, we need to stay "rooted" in the Good News that God has chosen to love us - not because of who we are, but because of who God is. We call that grace.

That is where the "**rays**" come in. We hope to extend our love, and the love we know from the graciousness of God, in many ways today. This means engaging in friendships with those that Jesus would have made friends with - those that feel isolated for any number of reasons. We know we will never be perfect at that, but we will try! We are especially aware that churches have long held back from friendship with others based on age, economics, sexuality, race, disability, and the list goes on. We seek to be something different than that. There are so many stories about how Jesus entered into life-affirming friendships with those that others wouldn't. We seek to be like Jesus.

Right there, in the center of it all, is the **cross**. For us, the cross is a "Tree of Life." It represents how God broke into this world to establish a new way of being alive. It symbolizes how God calls us to love with freedom, with recklessness even, if it means connecting the world to the wonder of God's transformative presence.



Morning Has Broken

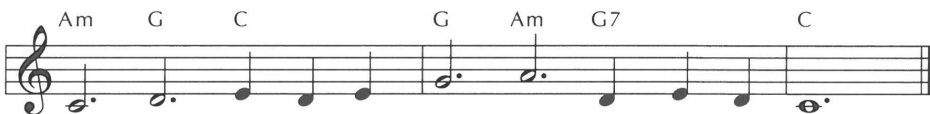
664



1 Morn-ing has bro - ken like the first morn - ing; black-bird has
 2 Sweet the rain's new fall sun - lit from heav - en, like the first
 3 Mine is the sun - light! Mine is the morn - ing, born of the

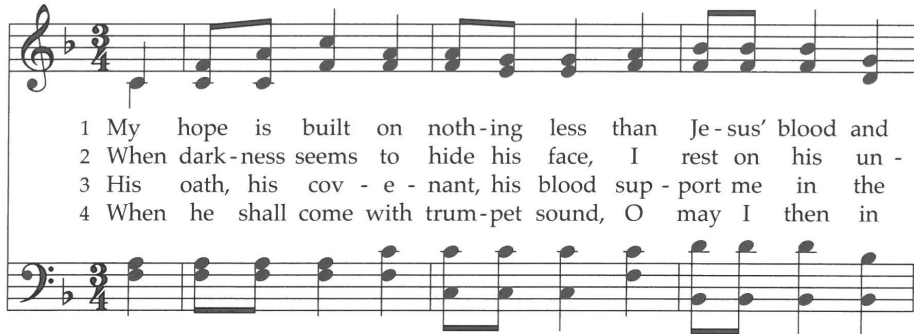


spo - ken like the first bird. Praise for the sing - ing! Praise for the
 dew - fall on the first grass. Praise for the sweet-ness of the wet
 one light E - den saw play! Praise with e - la - tion; praise ev - ery

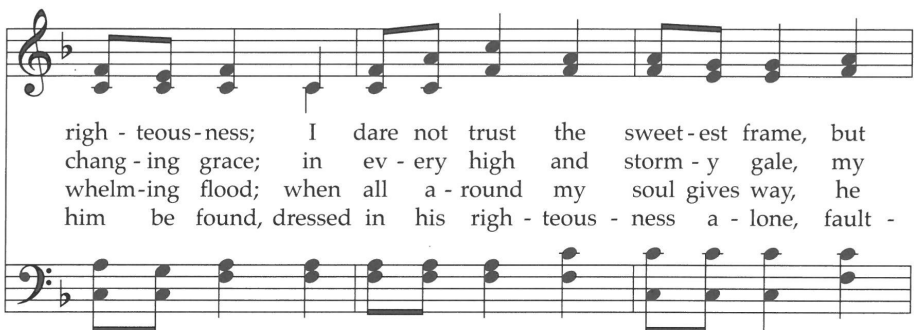


morn - ing! Praise for them, spring - ing fresh from the Word!
 gar - den, sprung in com - plete - ness where God's feet pass.
 morn - ing, God's re - cre - a - tion of the new day!

My Hope Is Built on Nothing Less 353

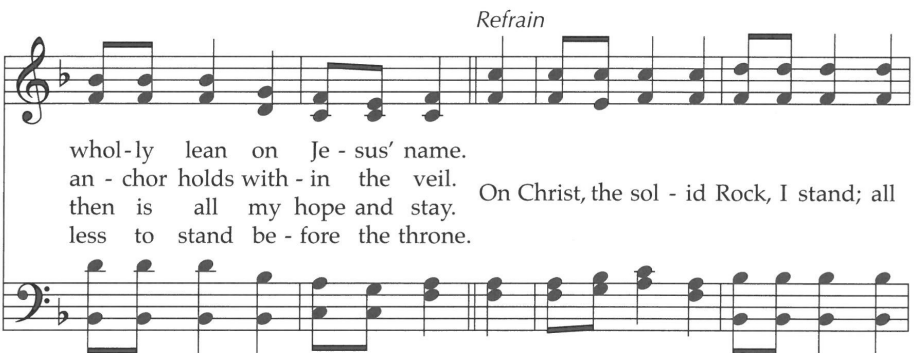


1 My hope is built on noth-ing less than Je-sus' blood and
2 When dark-ness seems to hide his face, I rest on his un -
3 His oath, his cov - e - nant, his blood sup - port me in the
4 When he shall come with trum-pet sound, O may I then in

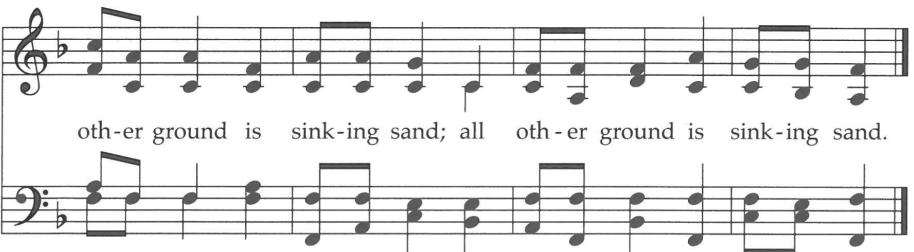


righ - teous-ness; I dare not trust the sweet-est frame, but
chang - ing grace; in ev - ery high and storm - y gale, my
whelm-ing flood; when all a - round my soul gives way, he
him be found, dressed in his righ - teous - ness a - lone, fault -

Refrain



whol-ly lean on Je - sus' name.
an - chor holds with - in the veil. On Christ, the sol - id Rock, I stand; all
then is all my hope and stay. less to stand be - fore the throne.



oth-er ground is sink-ing sand; all oth-er ground is sink-ing sand.

This hymn develops the imagery of Jesus' remark (Matthew 7:24–27 / Luke 6:47–49) that those who believe in him and act on that belief are like someone who builds a house on a rock. The text is set to a tune created for it by a prolific 19th-century American composer and editor.