

# SERVICE FOR THE LORD'S DAY

September 22, 2024 at 10 AM

Red Clay Creek Presbyterian Church  
500 McKennans Church Road, Wilmington DE  
(302) 998-0434; [www.rccpc.org](http://www.rccpc.org)

## *Rooted in Love, Lighting the Way*

*Welcome to worship, welcome to Red Clay, welcome home!*

*Please visit the welcome cart in the narthex to learn more about our community.*

## GATHER

### LIGHTING OF THE PEACE CANDLE

(a silent prayer)

*God of Hope, on this and every day, lead us from death to life, from falsehood to truth, from despair to hope, from fear to trust. Let peace fill our hearts, our world and our universe that, together with our brothers and sisters around the world, we might dream together, pray together and work together to build one world of peace and justice for all. Amen.*

### CHIMING OF THE HOUR

### WELCOME AND ANNOUNCEMENTS

One: The Lord be with you.

**Many: And also with you.**

### \*CALL TO WORSHIP

One: Abraham said, "Here I am!" when his faith was put to the test.

**Many: And God provided for him just in time.**

One: Gideon was scared and tested to see if God was still there.

**Many: But God kept putting his fears to ease.**

One: Jesus was tested in the wilderness, to show he is like us.

**Many: And the angels came and attended to him.**

One: When Peter was sinking from a test he couldn't pass, Jesus reached out his hand and caught him.

**Many: Through every test of life, we trust that God will make the grade.  
Let us worship God together!**

\*Indicates all who are able may stand

\*HYMN 401, vss. 1,2,4

## Here in This Place

### \*CALL TO CONFESSION

One: We continue to believe that God is taking out a red pen, giving us a bad grade or marking us down as absent. But God's grace is given to each of us, for all of us, freely, unconditionally, always. Let us open our lives to this mercy as we pray saying,

### \*PRAYER OF CONFESSION

Many: **Holy God, by the grace of Jesus Christ you know the tests and trials we face. Walk with us through the wilderness of our lives and help us to be open to learning your way. Keep us full of wonder, come to us with ministers of healing, and visit us with messengers of hope, so that we may return to you in faith, embracing the good news of the gospel; through Jesus Christ our Savior. Amen.**

### \*ASSURANCE OF PARDON

One: Fellow students of the way of Jesus, always remember that there is much more forgiveness in God than we could ever exhaust. Receive from God, through the grace of Christ, the blessing of sins forgiven and a right relationship restored.

### \*SUNG RESPONSE

Gloria Patri

**Glory be to the Father, and to the Son, and to the Holy Ghost;  
as it was in the beginning, is now, and ever shall be,  
world without end. Amen, amen.**

### \*PASSING OF THE PEACE

*Please greet those around you, wishing them "peace" or "the peace of Christ."*

### CHILDREN'S MOMENT & THE LORD'S PRAYER

*At the conclusion, Pre-K through 8th grade children who wish to attend Sunday school may proceed to their classes.*

CONGREGATIONAL RESPONSE

I'm So Blessed

*I'm so blessed. I'm so blessed. Got this heartbeat in my chest.  
No, it doesn't matter about the rest. If I got you, Lord, I'm so blessed.*

*On my best day, I'm a child of God; on my worst day, I'm a child of God.  
Oh ev'ryday is a good day, You're the reason why.*

## LISTEN

PRAYER OF ILLUMINATION

FIRST LESSON

Deuteronomy 8:2-3

MUSICAL OFFERING Jesus, the Very Thought of Thee

SECOND LESSON

Matthew 4:1-11

SERMON

Making the Grade: The Cheat Sheet

Pastor Nate

HYMN 43, vss. 1,4 **You Who Dwell in the Shelter of the Lord**

## RESPOND

CALL TO PRAYER

One: God be with you.

**Many: And also with you.**

One: May the peace of Christ dwell in your hearts.

**Many: Christ is our peace, our light, and our hope.**

One: Let us pray.

PRAYERS OF THE PEOPLE

## CALL TO THE OFFERING

*We invite you to make an online donation or by placing a check or cash in the collection plate. Envelopes are available in the pews for specified giving. The gray envelopes are for our new Roots & Rays Fund, which goes to creative outreach projects in the community.*



## MUSICAL OFFERING

Shine, Jesus, Shine

*During today's Musical Offering, you're invited to take part in a special quiz that reflects on the sermon. You can find the quiz as a bulletin insert. Grab a No. 2 pencil and test your knowledge—both for fun and deeper reflection! Answers will be available after the service in Founders Hall.*

\*SUNG RESPONSE Praise God, from Whom All Blessings Flow (Doxology)

***Praise God, from whom all blessings flow;  
praise him, all creatures here below;  
Praise him above, ye heavenly host;  
praise Father, Son and Holy Ghost. Amen.***

\*PRAYER OF DEDICATION

\*HYMN 687, vss. 1,3,4,6 **Our God, Our Help in Ages Past**

\*BENEDICTION



Thanks to today's worship participants:

Barbara Vanderkraats, *Music Ministry*

Nancy James, *Usher Captain*

Sandy Dudley, *Greeter*

Join us for refreshments & fellowship in Founders Hall following the postlude.

The flowers today are given in loving memory of Ronald J. Bagdon  
from The Bagdon Family.

Through a series of in-person messages, devotionals, and worship opportunities, we hope to keep you connected to—and nurtured by—the Red Clay Creek Presbyterian Church community. Make sure you're signed up for our Thursday eNews, Facebook, and Instagram accounts. Visit [www.rccpc.org](http://www.rccpc.org).



Red Clay Creek Presbyterian invites you  
to its *Signature Services* during the coming year.

**SERVICE OF HOPE & HEALING — September 29<sup>th</sup>, 2024 | 11:30AM**

This service will be a time for quiet prayer and reflection for those seeking healing, hope, comfort or peace individually, for others, and/or for our world, as well as an opportunity to receive individual prayers and anointing with oil, if you desire. All are welcome.

**FALL CELEBRATION SUNDAY — October 27<sup>th</sup>, 2024 | 10AM**

A joyous worship service where we give Bibles to our 3rd graders and dedicate our pledges, followed by outdoor trunk-or-treat and a flag football game.

**ANNIVERSARY SUNDAY — November 17<sup>th</sup>, 2024 | 10AM**

We give thanks for God's many blessings and our rich history of over 300 years.

**CANDLELIGHT CHRISTMAS EVE — December 24<sup>th</sup>, 2024**

- ◆ Family Service with Impromptu Pageant | 4PM
- ◆ Holy Night Service with Candlelight | 8PM
- ◆ Candlelight & Communion | 11PM

**ROOTS & RAYS SERVICE CHALLENGE 2025**

A month-long service effort beginning in January of each year, that directs our intention to the needs of our community.

**HOLY WEEK 2025**

- ◆ Maundy Thursday — April 17<sup>th</sup> | 7PM
- ◆ Good Friday — April 18<sup>th</sup> | 12PM
- ◆ Easter Sunday — April 20<sup>th</sup> | 10AM

**KIRKIN' O' THE TARTAN — May 18<sup>th</sup>, 2025 | 10AM**

Kirk is the Scottish word for church, so a church celebration and blessing of the tartans in our Presbyterian church honors both local and church heritage since it was the Scots who brought the Presbyterian Church to America.

**OUTDOOR SERVICE & PICNIC — June 1<sup>st</sup>, 2025 | 10AM**

Join us in the back meadow for worship and our annual picnic.

**SUMMER ARTS CAMP — JULY 14<sup>th</sup>-18<sup>th</sup>, 2025 | 9AM-12PM**

Kids K-5 will have music, drama, visual arts, snacks, and FUN, culminating with bingo and performance night July 18<sup>th</sup>, as well as Youth Sunday on July 20<sup>th</sup>.

# WELCOME TO RED CLAY

For LARGE print bulletins or children's bulletins, please ask an Usher.  
Restrooms are available. Just ask!

Welcome to worship, welcome to Red Clay, welcome home! Rooted in God's abiding love for all, our church is lighting the way for friendship, compassion, and service. Please join us for coffee hour in Founder's Hall after service, and stop by the welcome cart by the front entrance to learn more about our community. We hope you will worship with us again soon! If you are interested in deepening your participation, or if you just love Red Clay, it's time to think about membership! Contact Elder Nancy James at [njames19966@gmail.com](mailto:njames19966@gmail.com).

Here at Red Clay, we have numerous groups that are open and that welcome newcomers, including, e.g., Quilters, Crafters, "Friends and Fellowship" free luncheon for seniors, Bible study, ROMEOs ("Retired Old Men Eating Out"), Centering Prayer, "The Arcaders" social group for GenX and Millennials, Breakfast & the Bible with Pastor Nate, and Pickleball. Details can be found at [www.rccpc.org](http://www.rccpc.org)!

Children: Nursery care is available from 9:45AM through the conclusion of worship in Room 305 (just down the hallway from the sanctuary). After the Children's Moment, Pre-K - 2nd grade will adjourn to Room 303 and Grades 3-8 will adjourn to Room 202/204.

## UPCOMING EVENT SPOTLIGHT

### **Men's Fellowship BBQ Dinner & Speaker Chris Lock: Friday, September 27!**

Join us in Founders Hall for a powerful Men's Fellowship event open to everyone—no need to be a church member! Enjoy a delicious BBQ dinner & fellowship from 7-8pm; from 8-9pm, Chris Locke will share the inspiring story behind Sean's House, a mental health safe haven for young adults founded in memory of his son. This will be followed by a meaningful discussion on the "tests of life." RSVP to

[Julie@rccpc.org](mailto:Julie@rccpc.org).

## RED CLAY CREEK PRESBYTERIAN — MINISTERS, STAFF & CHAIRS

Rev. Dr. Nathaniel D. Phillips, *Senior Pastor/Head of Staff*

Rev. Emily Schwenker, *Parish Associate*

Rev. Dr. Philip Jones, *Parish Associate*

Jeffrey Miller, *Director of Music*

Barbara Vanderkraats, *Assistant Director of Choral Music*

Deena Andrews, *Assistant Director of Instrumental Music and Children's Choir Director*

Lisa Nichols, *Bell Choir Director*

Rachele Gilmore, *Director of Community Life*

Ben Andrews, *Director of Christian Formation*

Jamie Russell, *Director of Children's Ministries*

Judy Lozier, *Nursery Director* ❖ Shelby Beattie, *Sunday School Teacher* ❖ Sofia Martin, *Nursery Support*

Julie Reeder, *Office Coordinator* ❖ Dinyar Vania, *Facilities Manager*

Kelley Norton, *Administrative Assistant* ❖ Anthony M. Condoluci-Smith, *Financial Associate*

Charlie Hannagan, *Technology Support*

A. Leonhard, S. Armstrong, K. Barton, A. Bloom, D. Howarth, J. Schubel, P. Worrell, *Livestream Production*

Sandy Sarjeant, *Clerk of Session* ❖ Sue Gleason, *Deacon Moderator*

Geoff and Pam Meyer, *Belong Chairs* ❖ Nancy James, *Nurture Chair*

Linda Reisor, *Reach Chair* ❖ Lois Galinat, *Rejoice Chair*

Brandon Wallace, *Finance Chair* ❖ John Gast, *Personnel Chair*

Mark Cozine, *Home Chair* ❖ Scott McHenry, *Administration Chair*

Andrew Bloom, *Community Partners* ❖ Marcia Kelly, *Memory Garden Chair*

### A NOTE ON THE LOGO

Our church has "roots" in the community that date back to 1722. We have been a good neighbor when we were surrounded by farmland up until now when we are surrounded by the suburbs. Our history helps us remember a time when people helped one another out because that was the right thing to do. We hope to be a sign that this kind of community can still exist. We also believe that, in order for that community to exist, we need to stay "rooted" in the Good News that God has chosen to love us - not because of who we are, but because of who God is. We call that grace.

That is where the "rays" come in. We hope to extend our love, and the love we know from the graciousness of God, in many ways today. This means engaging in friendships with those that Jesus would have made friends with - those that feel isolated for any number of reasons. We know we will never be perfect at that, but we will try! We are especially aware that churches have long held back from friendship with others based on age, economics, sexuality, race, disability, and the list goes on. We seek to be something different than that. There are so many stories about how Jesus entered into life-affirming friendships with those that others wouldn't. We seek to be like Jesus.

Right there, in the center of it all, is the **cross**. For us, the cross is a "Tree of Life." It represents how God broke into this world to establish a new way of being alive. It symbolizes how God calls us to love with freedom, with recklessness even, if it means connecting the world to the wonder of God's transformative presence.

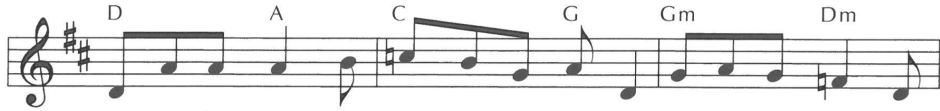




# Here in This Place

401

## Gather Us In



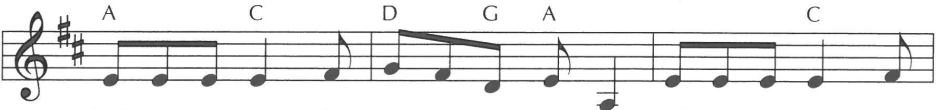
1 Here in this place the new light is stream-ing; now is the dark-ness  
 2 We are the young, our lives are a mys-tery. We are the old who  
 3 Here we will take the wine and the wa-ter; here we will take the  
 4 Not in the dark of build-ings con-fin-ing, not in some heav-en,



van-ish-ed a-way; see in this space our fears and our dream-ings  
 yearn for your face. We have been sung through-out all of his-tory,  
 bread of new birth. Here you shall call your sons and your daugh-ters,  
 light years a-way: here in this place the new light is shin-ing;



brought here to you in the light of this day.  
 called to be light to the whole hu-man race.  
 call us a-new to be salt for the earth.  
 now is the king-dom, and now is the day.



Gath-er us in, the lost and for-sak-en; gath-er us in, the  
 Gath-er us in, the rich and the haugh-ty; gath-er us in, the  
 Give us to drink the wine of com-pas-sion; give us to eat the  
 Gath-er us in and hold us for-ev-er; gath-er us in and



blind and the lame; call to us now, and we shall a-wak-en;  
 proud and the strong; give us a heart, so meek and so low-ly;  
 bread that is you; nour-ish us well, and teach us to fash-ion  
 make us your own; gath-er us in, all peo-ples to-geth-er,



we shall a-rise at the sound of our name.  
 give us the cour-age to en-ter the song.  
 lives that are ho-ly and hearts that are true.  
 fire of love in our flesh and our bone.

The "you/your" mentioned in every stanza is never identified, but this 1979 hymn is clearly a corporate prayer to God on behalf of the diverse congregation who have assembled for worship, longing to be transformed and used as God's witnesses and for God's purposes.

# 43 You Who Dwell in the Shelter of the Lord On Eagle's Wings (Psalm 91)

G *Leader or All* D/F#

1 You who dwell in the shel-ter of the Lord, who a -

G D/F# F

bide in his shad-ow for life, say to the Lord, "My

Dm F Gm Asus A

ref - uge, my rock in whom I trust!"

*Refrain* All D Em

And he will raise you up on ea - gles' wings, bear you on the

A7 D D7/F# G

breath of dawn, make you to shine like the sun,

A Bm F#m Em7 A Dsus D *Fine*

and hold you in the palm of his hand.

*Leader or All* G D/F#

2 The snare of the fowl - er will nev - er cap - ture you, and

G D/F# F

fam - ine will bring you no fear: un - der his wings, your

Although the body of this text is a paraphrase of Psalm 91, the refrain combines allusions to Exodus 19:4, Psalm 139:9, and Isaiah 40:31; 49:16. Written in response to the death of a friend's father, this piece has been a source of consolation to many people.

Dm F Gm Asus A  
to Refrain

ref - uge, his faith - ful - ness your shield.

G D/F#  
Leader or All

3 You need not fear the ter - ror of the night, nor the

G D/F# F

ar-row that flies by day; though thou - sands fall a -

Dm F Gm Asus A  
to Refrain

bout you, near you it shall not come.

G D/F#  
Leader or All

4 For to his an - gels he's giv - en a com - mand to

G D/F# F

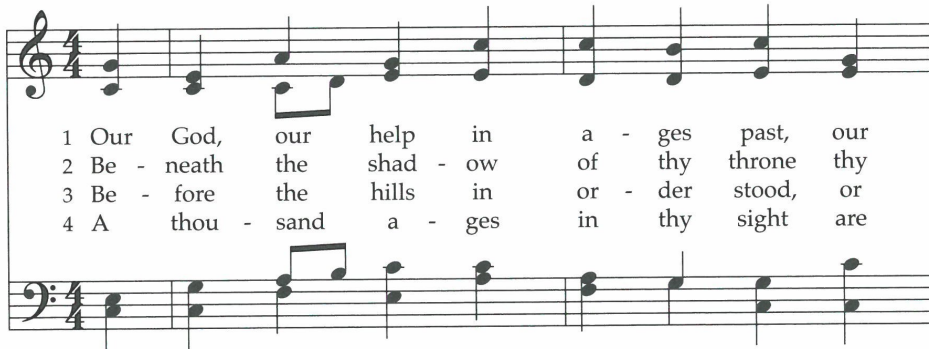
guard you in all of your ways; up - on their hands they will

Gm7 Am Gm7 Asus A  
to Refrain

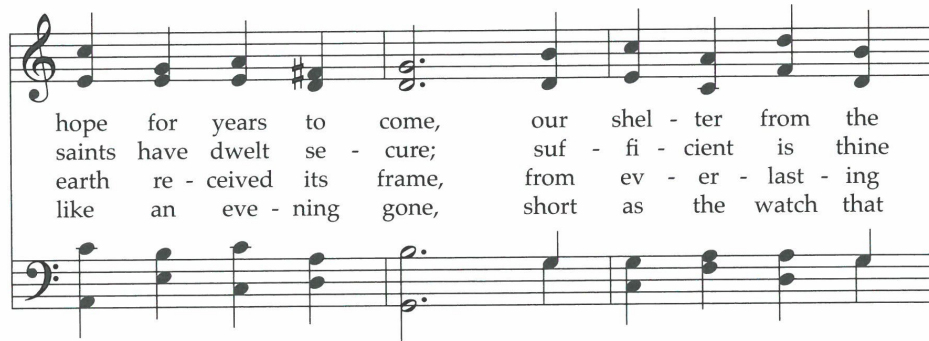
bear you up, lest you dash your foot a - gainst a stone.

# 687 Our God, Our Help in Ages Past

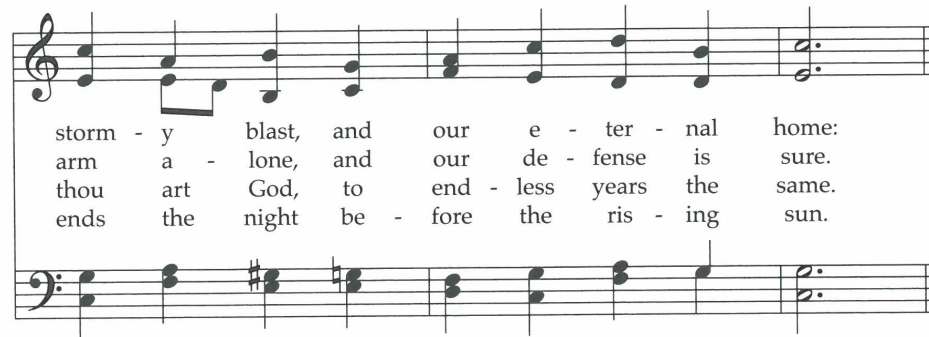
(Psalm 90)



1 Our God, our help in a - ges past, our  
2 Be - neath the shad - ow of thy throne thy  
3 Be - fore the hills in or - der stood, or  
4 A thou - sand a - ges in thy sight are



hope for years to come, our shel - ter from the  
saints have dwelt se - cure; suf - fi - cient is thine  
earth re - ceived its frame, from ev - er - last - ing  
like an eve - ning gone, short as the watch that



storm - y blast, and our e - ter - nal home:  
arm a - lone, and our de - fense is sure.  
thou art God, to end - less years the same.  
ends the night be - fore the ris - ing sun.

- 5 Time, like an ever rolling stream,  
bears all our years away;  
they fly forgotten, as a dream  
dies at the opening day.
- 6 Our God, our help in ages past,  
our hope for years to come,  
be thou our guard while life shall last,  
and our eternal home.

Many people sing this hymn unaware that it paraphrases Psalm 90, partly because this text speaks so immediately to the human condition. Since the middle of the 19th century, it has usually been joined to this tune named for the London parish where the composer was organist.