

# SERVICE FOR THE LORD'S DAY

January 5, 2025 at 10 AM



Red Clay Creek Presbyterian Church  
500 McKennans Church Road, Wilmington DE  
(302) 998-0434; [www.rccpc.org](http://www.rccpc.org)

## *Rooted in Love, Lighting the Way*

*Welcome to worship, welcome to Red Clay, welcome home!*

*Please visit the welcome cart in the narthex to learn more about our community.*

**Please silence your cell phones.**

## GATHER

### LIGHTING OF THE PEACE CANDLE

(a silent prayer)

*God of grace and mercy, as we await the Prince of Peace, we come to you with hearts yearning for the day when your peace reigns in the world. May your light dispel the darkness of discord, and may nations unite in the pursuit of harmony and justice. Inspire our leaders with wisdom and compassion that they may work for the well-being of all. Amen.*

### CHIMING OF THE HOUR

### WELCOME AND ANNOUNCEMENTS

One: The Lord be with you.

Many: **And also with you.**

### \*CALL TO WORSHIP

(from Isaiah 60)

One: Arise, God's people, and shine like the sun; the glory of the Lord is shining on you!

Many: **Other people will be covered by the darkness, but on God's people the light of the Lord will shine;**

One: The brightness of his presence will be with you.

*(continued)*

**Many:** Nations will be drawn to the light upon God's people, and even kings will be drawn to the dawning of our new day.

**One:** Let God's people begin a new year worshiping Him who is the Light and Life of our salvation!

**Many:** Let us worship the Lord!

\*HYMN 152                      **What Star Is This, with Beams So Bright**

\*PRAYER OF CONFESSION

**One:** Timeless God, who can make all things new, we humbly bring before you the record of our lives in the year just ending.

**Many:** **Where life has been good to us, do not let us take more of the credit than we deserve. Where we have been good to others, help us to forget thoughts of honor and reward. Where we have fallen short, forgive us, and free us from brooding over what is past. Cleanse us by your mercy, guide us by your truth, fill us with your love, lead us forward in your all-conquering hope. Through the grace of Jesus, your son, our savior. Amen.**

\*ASSURANCE OF PARDON

**One:** Hear this Good News from the Apostle Paul: our old lives are gone; new lives emerge! All this comes from the God who settled the relationship between us and him, and then called us to settle our relationships with each other. God put the world square with himself through the Jesus Christ giving the world a fresh start by offering forgiveness of sins. Friends, Jesus gives us a new start today in our New Year, for in Him, our sins are forgiven.

\*SUNG RESPONSE              We Three Kings of Orient Are

***We three kings of Orient are;  
bearing gifts we traverse afar, field and fountain,  
moor and mountain, following yonder star.  
O star of wonder, star of night, star with royal beauty bright,  
westward leading, still proceeding, guide us to thy perfect light!***

\*PASSING OF THE PEACE

*Please greet those around you, wishing them "peace" or "the peace of Christ."*

## CHILDREN'S MOMENT & THE LORD'S PRAYER

*At the conclusion, Pre-K through 8th grade children who wish to attend Sunday school may proceed to their classes.*

## LISTEN

CHORAL PRAYER OF ILLUMINATION We Three Kings of Orient Are

*Glorious now behold him arise,  
King and God and Sacrifice: Alleluia! Alleluia!  
sounds through the earth and skies.  
O star of wonder, star of night, star with royal beauty bright,  
westward leading, still proceeding, guide us to thy perfect light!*

SCRIPTURE LESSON Matthew 22:34-46

SERMON Love God---Love All Rev. Dr. Jones

HYMN 154 Jesus Entered Egypt

## RESPOND

### CALL TO PRAYER

One: God be with you.  
**Many: And also with you.**  
One: May the peace of Christ dwell in your hearts.  
**Many: Christ is our peace, our light, and our hope.**  
One: Let us pray.

### PRAYERS OF THE PEOPLE

### CALL TO THE OFFERING

*We invite you to make an online donation or by placing a check or cash in the collection plate. Envelopes are available in the pews for specified giving. The gray envelopes are for our Roots & Rays Fund, which goes to creative outreach projects in the community.*



MUSICAL OFFERING Carol for Christmastide

\*SUNG RESPONSE As with Gladness Men of Old

*As they offered gifts most rare at thy manger, rude and bare,  
so may we with holy joy, pure and free from sin's alloy,  
all our costliest treasures bring, Christ, to thee, our heavenly king.*

\*PRAYER OF DEDICATION

\*HYMN 156 Sing of God Made Manifest

\*BENEDICTION



Thanks to today's worship participants:

Chancel Choir, *Music Ministry*  
Bob Kissell, *Usher Captain*  
Jim Murray, *Greeter*

Join us for refreshments & fellowship in Founders Hall following the postlude.

The flowers today are given to the Glory of God.

Through a series of in-person messages, devotionals, and worship opportunities, we hope to keep you connected to—and nurtured by—the Red Clay Creek Presbyterian Church community. Make sure you're signed up for our Thursday eNews, Facebook, and Instagram accounts. Visit [www.rccpc.org](http://www.rccpc.org).



Red Clay Creek Presbyterian invites you  
to its *Signature Services* during the coming year.

### **ROOTS AND RAYS SERVICE CHALLENGE 2025**

A month-long service effort beginning in January of each year, that directs our intention to the needs of our community.

### **HOLY WEEK 2025**

- ◆ Maundy Thursday — April 17<sup>th</sup> | 7PM
- ◆ Good Friday — April 18<sup>th</sup> | 12PM
- ◆ Easter Sunday — April 20<sup>th</sup> | 10AM

### **KIRKIN' O' THE TARTAN — May 18<sup>th</sup>, 2025 | 10AM**

Kirk is the Scottish word for church, so a church celebration and blessing of the tartans in our Presbyterian church honors both local and church heritage since it was the Scots who brought the Presbyterian Church to America.

### **OUTDOOR SERVICE & PICNIC — June 1<sup>st</sup>, 2025 | 10AM**

Join us in the back meadow for worship and our annual picnic.

### **SUMMER ARTS CAMP — JULY 14<sup>th</sup>-18<sup>th</sup>, 2025 | 9AM-12PM**

Kids K-5 will have music, drama, visual arts, snacks, and FUN, culminating with bingo and performance night July 18<sup>th</sup>, as well as Youth Sunday on July 20<sup>th</sup>.

### **HOMECOMING SUNDAY — September 7<sup>th</sup>, 2025 | 10AM**

We mark our return to regular church programming with the start of our fall sermon series and Sunday School kick off.

### **FALL CELEBRATION SUNDAY — October 26<sup>th</sup>, 2025 | 10AM**

A joyous worship service where we give Bibles to our 3rd graders and dedicate our pledges, followed by outdoor trunk-or-treat and a flag football game.

### **ANNIVERSARY SUNDAY — November 16<sup>th</sup>, 2025 | 10AM**

We give thanks for God's many blessings and our rich history of over 300 years.

### **CANDLELIGHT CHRISTMAS EVE — December 24<sup>th</sup>, 2025**

- ◆ Family Service with Impromptu Pageant | 4PM
- ◆ Holy Night Service with Candlelight | 8PM
- ◆ Candlelight & Communion | 11PM

# WELCOME TO RED CLAY

For LARGE print bulletins or children's bulletins, please ask an Usher.  
Restrooms are available. Just ask!

Welcome to worship, welcome to Red Clay, welcome home! Rooted in God's abiding love for all, our church is lighting the way for friendship, compassion, and service. Please join us for coffee hour in Founder's Hall after service, and stop by the welcome cart by the front entrance to learn more about our community. We hope you will worship with us again soon! If you are interested in deepening your participation, or if you just love Red Clay, it's time to think about membership! Contact Elder Nancy James at [njames19966@gmail.com](mailto:njames19966@gmail.com).

Here at Red Clay, we have numerous groups that are open and that welcome newcomers, including, e.g., Quilters, Crafters, "Friends and Fellowship" free luncheon for seniors, Bible study, ROMEOs ("Retired Old Men Eating Out"), Centering Prayer, "The Arcaders" social group for GenX and Millennials, Theology 101 with Pastor Nate, and Pickleball. Details can be found at [www.rcpc.org](http://www.rcpc.org)!

Children: Nursery care is available from 9:45AM through the conclusion of worship in Room 305 (just down the hallway from the sanctuary). After the Children's Moment, Pre-K - 2nd grade will adjourn to Room 303 and Grades 3-8 will adjourn to Room 202/204.

## UPCOMING EVENT SPOTLIGHT

### Day of Service at Food Bank of Delaware: January 11

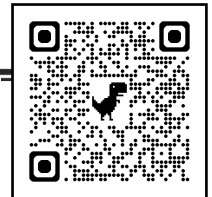
Join us for a volunteer day at the Food Bank of Delaware in Newark on Sat., January 11. Volunteers will help sort & organize food. Choose to serve from:

**10 am - 12 pm\* OR 1 pm - 3 pm** (*all are welcome*).

*\*confirmands and mentors are encouraged to volunteer during this time but all are welcome*

If you have never volunteered at the Food Bank before, you will need to sign up through their website and create an account. If you are interested in helping, please use the link to sign up. Questions? Contact Lois at [lois.galinat@gmail.com](mailto:lois.galinat@gmail.com).

<https://fbd.volunteerhub.com/vv2/lp/rcp>



## RED CLAY CREEK PRESBYTERIAN — MINISTERS, STAFF & CHAIRS

Rev. Dr. Nathaniel D. Phillips, *Senior Pastor/Head of Staff*

Rev. Emily Schwenker, *Parish Associate*

Rev. Dr. Philip Jones, *Parish Associate*

Jeffrey Miller, *Director of Music*

Deena Andrews, *Assistant Director of Instrumental Music and Children's Choir Director*

Lisa Nichols, *Bell Choir Director*

Rachele Gilmore, *Director of Community Life*

Ben Andrews, *Director of Christian Formation*

Jamie Russell, *Director of Children's Ministries*

Barbara Vanderkraats, *Pastoral Care Coordinator*

Judy Lozier, *Nursery Director* ❖ Shelby Beattie, *Sunday School Teacher* ❖ Sofia Martin, *Nursery Support*

Julie Reeder, *Office Coordinator* ❖ Dinyar Vania, *Facilities Manager*

Kelley Norton, *Administrative Assistant* ❖ Anthony M. Condoluci-Smith, *Financial Associate*

Charlie Hannagan, *Technology Support*

A. Leonhard, S. Armstrong, K. Barton, A. Bloom, D. Howarth, J. Schubel, P. Worrell, *Livestream Production*

Sandy Sarjeant, *Clerk of Session* ❖ Sue Gleason, *Deacon Moderator*

Geoff and Pam Meyer, *Belong Chairs* ❖ Nancy James, *Nurture Chair*

Linda Reisor, *Reach Chair* ❖ Lois Galinat, *Rejoice Chair*

Brandon Wallace, *Finance Chair* ❖ John Gast, *Personnel Chair*

Mark Cozine, *Home Chair* ❖ Scott McHenry, *Administration Chair*

Andrew Bloom, *Community Partners* ❖ Marcia Kelly, *Memory Garden Chair*

### A NOTE ON THE LOGO

Our church has "roots" in the community that date back to 1722. We have been a good neighbor when we were surrounded by farmland up until now when we are surrounded by the suburbs. Our history helps us remember a time when people helped one another out because that was the right thing to do. We hope to be a sign that this kind of community can still exist. We also believe that, in order for that community to exist, we need to stay "rooted" in the Good News that God has chosen to love us - not because of who we are, but because of who God is. We call that grace.

That is where the "rays" come in. We hope to extend our love, and the love we know from the graciousness of God, in many ways today. This means engaging in friendships with those that Jesus would have made friends with - those that feel isolated for any number of reasons. We know we will never be perfect at that, but we will try! We are especially aware that churches have long held back from friendship with others based on age, economics, sexuality, race, disability, and the list goes on. We seek to be something different than that. There are so many stories about how Jesus entered into life-affirming friendships with those that others wouldn't. We seek to be like Jesus.

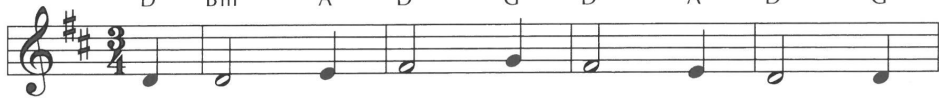
Right there, in the center of it all, is the **cross**. For us, the cross is a "Tree of Life." It represents how God broke into this world to establish a new way of being alive. It symbolizes how God calls us to love with freedom, with recklessness even, if it means connecting the world to the wonder of God's transformative presence.





# What Star Is This, with Beams So Bright 152

Capo 2: (C) (Am) (G) (C) (F) (C) (G) (C) (F)  
 D Bm A D G D A D G



1 What star is this, with beams so bright, more  
 2 'Tis now full-filled what God de-creed, "From  
 3 While out-ward signs the star dis-plays, an  
 4 O Je-sus, while the star of grace im-

(C) (G) (C) (F) (C) (G)  
 D A D G D A



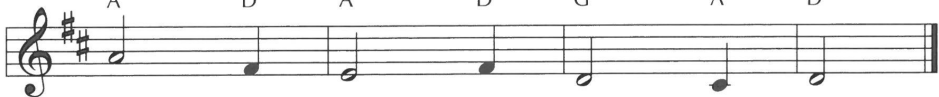
love-ly than the noon-day light? 'Tis  
 Ja-cob shall a star pro-ceed"; and  
 in-ward light the Lord con-veys and  
 pels us on to seek your face, let

(Am) (D7) (G) (C) (F) (C) (Dm)  
 Bm E7 A D G D Em



sent to an-nounce a new-born king, glad  
 lo! the east-ern sa-ges stand to  
 urg-es them, with ten-der might, to  
 not our sloth-ful hearts re-fuse the

(G) (C) (G) (C) (F) (G) (C)  
 A D A D G A D



ti-dings of our God to bring.  
 read in heaven the Lord's com-mand.  
 seek the giv-er of the light.  
 guid-ance of your light to use.

This 18th-century Latin text calls attention to three kinds of light: the light of the star leading the Magi to the Christ-child, the inward light inspiring their journey, and Christ who is the Light of the world. The simple unison melody unites everything in a gentle arc.

# Jesus Entered Egypt

154

Capo 5: (Am)

(G) (Am) (C) (Am)

(Dm) (Am)

Dm

C

Dm

F

Dm

Gm

Dm



1 Je - sus en - tered E - gypt flee - ing Her - od's hand,  
 2 Je - sus was a mi - grant liv - ing as a guest  
 3 Je - sus cross - es bor - ders with the wan - dering poor,

(C)

(G)

(Am)

(C)

(Dm)

F

C

Dm

F

Gm



liv - ing as an a - lien in a for - eign land.  
 with the friends and strang - ers who could of - fer rest.  
 search - ing for a ref - uge, for an o - pen door.

(G)

(Em)

(Am)

(G)

(D)

(G)

C

Am

Dm

C

G

C



Far from home and coun - try with his fam - i - ly,  
 Do we hold wealth light - ly so that we can share  
 Do our words and ac - tions an - swer Je - sus' plea:

(Am)

(G)

(Em)

(Dm)

(C)

(G)

(Am)

Dm

C

Am

Gm

F

C

Dm



was there room and wel - come for this ref - u - gee?  
 shel - ter with the home - less, and a - bun - dant care?  
 "Give the low - ly wel - come, and you wel - come me"?"

*Guitar chords do not correspond with keyboard harmony.*

Human beings create divisions for many political, social, economic, and military reasons, but God is no respecter of the boundaries we erect. Jesus taught us to look for and respect the image of God that can be found in every human being, and to care for "the least of these."

# Sing of God Made Manifest 156



1 Sing of God made man - i - fest in a child ro - bust and blest,  
2 Sing of God made man - i - fest when at Jor - dan John con - fessed,  
3 Sing of God made man - i - fest when Christ came as wed - ding guest  
4 Sing of God made man - i - fest on the cloud - capped moun - tain's crest,



to whose home in Beth - le - hem where a star had guid - ed them,  
"I should be bap - tized by you, but your bid - ding I will do."  
and at Ca - na gave a sign, turn - ing wa - ter in - to wine;  
where the law and proph - ets waned so that Christ a - lone re - mained:



ma - gi came and gifts un - bound, signs mys - te - rious and pro - found:  
Then from heaven a dou - ble sign—dove - like Spir - it, voice di - vine—  
fur - ther still was love re - vealed as he taught, for - gave, and healed,  
glimpse of glo - ry, pledge of grace, given as Je - sus set his face



myrrh and frank - in - cense and gold grave and God and king fore - told.  
hailed the true A - noint - ed One: "This is my be - lov - ed Son."  
bring - ing light and life to all who would lis - ten to God's call.  
towards the wait - ing cross and grave, sign of hope that God would save.



"Epiphany" means "manifestation" or "showing forth," and this text cites key disclosures of Jesus as Messiah: the coming of the Magi, his baptism by John the Baptist, the wedding at Cana. All are summed up in the Transfiguration, recalled on the Last Sunday after the Epiphany.