

# SERVICE FOR THE LORD'S DAY

January 12, 2025 at 10 AM



Red Clay Creek Presbyterian Church  
500 McKennans Church Road, Wilmington DE  
(302) 998-0434; [www.rccpc.org](http://www.rccpc.org)

## *Rooted in Love, Lighting the Way*

*Welcome to worship, welcome to Red Clay, welcome home!*

*Please visit the welcome cart in the narthex to learn more about our community.*

**Please silence your cell phones.**

## GATHER

### LIGHTING OF THE PEACE CANDLE

(a silent prayer)

*God of grace and mercy, as we await the Prince of Peace, we come to you with hearts yearning for the day when your peace reigns in the world. May your light dispel the darkness of discord, and may nations unite in the pursuit of harmony and justice. Inspire our leaders with wisdom and compassion that they may work for the well-being of all. Amen.*

### CHIMING OF THE HOUR

### WELCOME AND ANNOUNCEMENTS

One: The Lord be with you.

**Many: And also with you.**

### \*CALL TO WORSHIP

One: Come, all who are blessed by God's grace! Let us gather to give thanks and share His love.

**Many: We come, remembering the ways God has blessed us, naming them one by one.**

One: God calls us to serve, to love, and to shine as a blessing in the world.

**Many: Let us worship God, counting our blessings and lifting our hearts in praise!**

\*HYMN 401, vss. 1,2,4

## Here In This Place

\*COMMUNAL BLESSING

*For A New Beginning*

John O'Donohue

One: In out-of-the-way places of the heart,  
Where your thoughts never think to wander,  
This beginning has been quietly forming,  
Waiting until you were ready to emerge.

Many: **For a long time it has watched your desire,  
Feeling the emptiness growing inside you,  
Noticing how you willed yourself on,  
Still unable to leave what you had outgrown.**

One: It watched you play with the seduction of safety  
And the gray promises that sameness whispered,  
Heard the waves of turmoil rise and relent,  
Wondered would you always live like this.

Many: **Then the delight, when your courage kindled,  
And out you stepped onto new ground,  
Your eyes young again with energy and dream,  
A path of plenitude opening before you.**

\*SUNG RESPONSE

Come Thou Fount of Every Blessing

*Come, Thou Fount of every blessing, tune my heart to sing Thy grace;  
Streams of mercy, never ceasing, call for songs of loudest praise.  
Teach me some melodious sonnet, sung by flaming tongues above;  
Praise the mount, I'm fixed upon it, mount of Thy redeeming love.*

\*COMMUNAL BLESSING (*continued*)

One: Though your destination is not yet clear  
You can trust the promise of this opening;  
Unfurl yourself into the grace of beginning  
That is at one with your life's desire.

Many: **Awaken your spirit to adventure;  
Hold nothing back, learn to find ease in risk;  
Soon you will home in a new rhythm,  
For your soul senses the world that awaits you.**

\*PASSING OF THE PEACE

*Please greet those around you, wishing them "peace" or "the peace of Christ."*

## CHILDREN'S MOMENT & THE LORD'S PRAYER

*At the conclusion, we look forward to welcoming all Pre-K through 8th grade children to the nursery or their Sunday school classes, as the congregation prepares to hear the sermon.*

CONGREGATIONAL RESPONSE                      Count Your Blessings

*Count your blessings, name them one by one,  
Count your blessings, see what God has done!  
Count your blessings, name them one by one,  
Count your many blessings, see what God has done.*

## LISTEN

PRAYER OF ILLUMINATION

SCRIPTURE LESSON                      Luke 3:15-17

SERMON                      Friendship House's Impact                      Kim Eppehimer,  
*Friendship House Executive Director*

HYMN 276                      **Sing a New Song unto the Lord**

## RESPOND

LITANY FOR MISSION                      *(As we embark on Service Challenge 2025)*

One:        For the work of Friendship House, as they provide hope and stability to those experiencing homelessness in Delaware,

**Many:    Hear our prayer, O Lord.**

One:        For Sibanye, "We Are One," and our ministry with orphans and vulnerable children in Port Elizabeth, South Africa,

**Many:    Strengthen the work, O Lord.**

One:        For Clinica Cedcas in Costa Rica, as they bring healing and care to underserved communities,

**Many:    Bless their ministry, O Lord.**

One:        For Meeting Ground in Maryland, as they provide shelter and resources to those who are unhoused,

**Many:    Grant them your provision, O Lord.**

- One: For the Food Bank of Delaware, as they feed the hungry in our community,
- Many: Fill their work with your abundance, O Lord.**
- One: For Emmanuel Dining Room, as they share meals and fellowship with those in need,
- Many: Bless their table with your grace, O Lord.**
- One: For the work of creating and sustaining low-income housing in Asheville, Maine, and beyond,
- Many: Build your justice and love into their efforts, O Lord.**
- One: For those who hunger and thirst for righteousness, for those who live in poverty or face oppression, and for all who work to bring your justice and peace,
- Many: Inspire us to act, O Lord.**
- One: For the strengthening of our church's mission, that we might embody Christ's love in our local community and across the world,
- Many: Hear our prayer, O Lord.**
- One: For an increase in our generosity, that we may joyfully give of our time, talents, and resources to further your kingdom,
- Many: Teach us to give, O Lord.**
- One: For the courage to proclaim the Good News through both word and deed,
- Many: Equip us to serve, O Lord.**
- One: For the faith to keep walking forward in mission, trusting that you are with us every step of the way,
- Many: Strengthen our resolve, O Lord.**
- One: For the persecuted church and all who suffer for the sake of the Gospel,
- Many: Grant them your peace, O Lord.**
- One: For the ongoing work of belonging, nurturing, rejoicing, and reaching out to love your sheep, that we may be faithful to your call,
- Many: Lead us in your ways, O Lord.**
- One: That our church might be rooted in love and lighting the way, inviting all to meet Jesus, be nourished by him, and go out to serve others in his name,
- Many: Hear our prayer, O Lord. Amen.**

## CALL TO THE OFFERING

*We invite you to make an online donation or by placing a check or cash in the collection plate. Envelopes are available in the pews for specified giving. The gray envelopes are for our Roots & Rays Fund, which goes to creative outreach projects in the community.*



MUSICAL OFFERING

Lord, Most High

\*SUNG RESPONSE

As with Gladness Men of Old

*As they offered gifts most rare at thy manger, rude and bare,  
so may we with holy joy, pure and free from sin's alloy,  
all our costliest treasures bring, Christ, to thee, our heavenly king.*

\*PRAYER OF DEDICATION

\*HYMN 546

**Lord, Dismiss Us with Your Blessing**

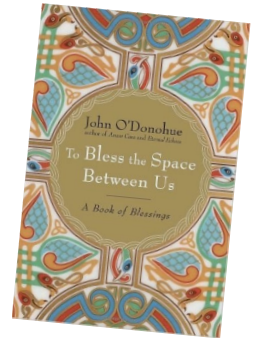
\*BENEDICTION

POSTLUDE

Fly, Eagles, Fly



Born January 1<sup>st</sup>, 1956, in western Ireland, John O'Donohue loved the land of his birth and its Celtic roots. A deeply spiritual man, O'Donohue was ordained as a Roman Catholic priest in 1979, and went on to become a poet, author, activist, philosopher and speaker. His friends describe him as larger than life with a gift for friendship. John O'Donohue died suddenly just two days after his 52<sup>nd</sup> birthday. One of his books, *To Bless the Space Between Us*, is the inspiration for our sermon series and the source for the blessings used in today's worship service.



Thanks to today's worship participants:

Lauda, *Music Ministry*; Bob Emmons, *Usher Captain*; Shirley Tielleman, *Greeter*

Join us for refreshments & fellowship in Founders Hall following the postlude.

The flowers today are given in loving memory of Kove Hudson, with love from Bonnie, Jeff & Kristin and granddaughters.

Through a series of in-person messages, devotionals, and worship opportunities, we hope to keep you connected to—and nurtured by—the Red Clay Creek Presbyterian Church community. Make sure you're signed up for our Thursday eNews, Facebook, and Instagram accounts. Visit [www.rccpc.org](http://www.rccpc.org).



Red Clay Creek Presbyterian invites you  
to its *Signature Services* during the coming year.

### **ROOTS AND RAYS SERVICE CHALLENGE 2025**

A month-long service effort beginning in January of each year, that directs our intention to the needs of our community.

### **HOLY WEEK 2025**

- ◆ Maundy Thursday — April 17<sup>th</sup> | 7PM
- ◆ Good Friday — April 18<sup>th</sup> | 12PM
- ◆ Easter Sunday — April 20<sup>th</sup> | 10AM

### **KIRKIN' O' THE TARTAN — May 18<sup>th</sup>, 2025 | 10AM**

Kirk is the Scottish word for church, so a church celebration and blessing of the tartans in our Presbyterian church honors both local and church heritage since it was the Scots who brought the Presbyterian Church to America.

### **OUTDOOR SERVICE & PICNIC — June 1<sup>st</sup>, 2025 | 10AM**

Join us in the back meadow for worship and our annual picnic.

### **SUMMER ARTS CAMP — JULY 14<sup>th</sup>-18<sup>th</sup>, 2025 | 9AM-12PM**

Kids K-5 will have music, drama, visual arts, snacks, and FUN, culminating with bingo and performance night July 18<sup>th</sup>, as well as Youth Sunday on July 20<sup>th</sup>.

### **HOMECOMING SUNDAY — September 7<sup>th</sup>, 2025 | 10AM**

We mark our return to regular church programming with the start of our fall sermon series and Sunday School kick off.

### **FALL CELEBRATION SUNDAY — October 26<sup>th</sup>, 2025 | 10AM**

A joyous worship service where we give Bibles to our 3rd graders and dedicate our pledges, followed by outdoor trunk-or-treat and a flag football game.

### **ANNIVERSARY SUNDAY — November 16<sup>th</sup>, 2025 | 10AM**

We give thanks for God's many blessings and our rich history of over 300 years.

### **CANDLELIGHT CHRISTMAS EVE — December 24<sup>th</sup>, 2025**

- ◆ Family Service with Impromptu Pageant | 4PM
- ◆ Holy Night Service with Candlelight | 8PM
- ◆ Candlelight & Communion | 11PM

# WELCOME TO RED CLAY

For LARGE print bulletins or children's bulletins, please ask an Usher.  
Restrooms are available. Just ask!

Welcome to worship, welcome to Red Clay, welcome home! Rooted in God's abiding love for all, our church is lighting the way for friendship, compassion, and service. Please join us for coffee hour in Founder's Hall after service, and stop by the welcome cart by the front entrance to learn more about our community. We hope you will worship with us again soon! If you are interested in deepening your participation, or if you just love Red Clay, it's time to think about membership! Contact Elder Nancy James at [njames19966@gmail.com](mailto:njames19966@gmail.com).

Here at Red Clay, we have numerous groups that are open and that welcome newcomers, including, e.g., Quilters, Crafters, "Friends and Fellowship" free luncheon for seniors, Bible study, ROMEOs ("Retired Old Men Eating Out"), Centering Prayer, "The Arcaders" social group for GenX and Millennials, Theology 101 with Pastor Nate, and Pickleball. Details can be found at [www.rccpc.org](http://www.rccpc.org)!

Children: Nursery care is available from 9:45AM through the conclusion of worship in Room 305 (just down the hallway from the sanctuary). After the Children's Moment, Pre-K - 2nd grade will adjourn to Room 303 and Grades 3-8 will adjourn to Room 202/204.

## UPCOMING EVENT SPOTLIGHT

### **Bagged Lunch Assembly for Friendship House: Founders Hall, TODAY After Service!**

Help us assemble bagged lunches for Friendship House of Delaware to be distributed at their Empowerment Centers.

All are welcome to lend a hand!

## RED CLAY CREEK PRESBYTERIAN — MINISTERS, STAFF & CHAIRS

Rev. Dr. Nathaniel D. Phillips, *Senior Pastor/Head of Staff*

Rev. Emily Schwenker, *Parish Associate*

Rev. Dr. Philip Jones, *Parish Associate*

Jeffrey Miller, *Director of Music*

Deena Andrews, *Assistant Director of Instrumental Music and Children's Choir Director*

Lisa Nichols, *Bell Choir Director*

Rachele Gilmore, *Director of Community Life*

Ben Andrews, *Director of Christian Formation*

Jamie Russell, *Director of Children's Ministries*

Barbara Vanderkraats, *Pastoral Care Coordinator*

Judy Lozier, *Nursery Director* ❖ Shelby Beattie, *Sunday School Teacher* ❖ Sofia Martin, *Nursery Support*

Julie Reeder, *Office Coordinator* ❖ Dinyar Vania, *Facilities Manager*

Kelley Norton, *Administrative Assistant* ❖ Anthony M. Condoluci-Smith, *Financial Associate*

Charlie Hannagan, *Technology Support*

A. Leonhard, S. Armstrong, K. Barton, A. Bloom, D. Howarth, J. Schubel, P. Worrell, *Livestream Production*

Sandy Sarjeant, *Clerk of Session* ❖ Sue Gleason, *Deacon Moderator*

Geoff and Pam Meyer, *Belong Chairs* ❖ Nancy James, *Nurture Chair*

Linda Reisor, *Reach Chair* ❖ Lois Galinat, *Rejoice Chair*

Brandon Wallace, *Finance Chair* ❖ John Gast, *Personnel Chair*

Mark Cozine, *Home Chair* ❖ Scott McHenry, *Administration Chair*

Andrew Bloom, *Community Partners* ❖ Marcia Kelly, *Memory Garden Chair*

### A NOTE ON THE LOGO

Our church has "roots" in the community that date back to 1722. We have been a good neighbor when we were surrounded by farmland up until now when we are surrounded by the suburbs. Our history helps us remember a time when people helped one another out because that was the right thing to do. We hope to be a sign that this kind of community can still exist. We also believe that, in order for that community to exist, we need to stay "rooted" in the Good News that God has chosen to love us - not because of who we are, but because of who God is. We call that grace.

That is where the "rays" come in. We hope to extend our love, and the love we know from the graciousness of God, in many ways today. This means engaging in friendships with those that Jesus would have made friends with - those that feel isolated for any number of reasons. We know we will never be perfect at that, but we will try! We are especially aware that churches have long held back from friendship with others based on age, economics, sexuality, race, disability, and the list goes on. We seek to be something different than that. There are so many stories about how Jesus entered into life-affirming friendships with those that others wouldn't. We seek to be like Jesus.

Right there, in the center of it all, is the **cross**. For us, the cross is a "Tree of Life." It represents how God broke into this world to establish a new way of being alive. It symbolizes how God calls us to love with freedom, with recklessness even, if it means connecting the world to the wonder of God's transformative presence.





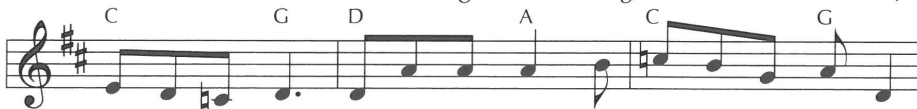
# Here in This Place

401

## Gather Us In



1 Here in this place the new light is stream-ing; now is the dark-ness  
 2 We are the young, our lives are a mys-tery. We are the old who  
 3 Here we will take the wine and the wa-ter; here we will take the  
 4 Not in the dark of build-ings con-fin-ing, not in some heav-en,



van-ished a-way; see in this space our fears and our dream-ings  
 yearn for your face. We have been sung through-out all of his-tory,  
 bread of new birth. Here you shall call your sons and your daugh-ters,  
 light years a-way: here in this place the new light is shin-ing;



brought here to you in the light of this day.  
 called to be light to the whole hu-man race.  
 call us a-new to be salt for the earth.  
 now is the king-dom, and now is the day.



Gath-er us in, the lost and for-sak-en; gath-er us in, the  
 Gath-er us in, the rich and the haugh-ty; gath-er us in, the  
 Give us to drink the wine of com-pas-sion; give us to eat the  
 Gath-er us in and hold us for-ev-er; gath-er us in and



blind and the lame; call to us now, and we shall a-wak-en;  
 proud and the strong; give us a heart, so meek and so low-ly;  
 bread that is you; nour-ish us well, and teach us to fash-ion  
 make us your own; gath-er us in, all peo-ples to-geth-er,



we shall a-rise at the sound of our name.  
 give us the cour-age to en-ter the song.  
 lives that are ho-ly and hearts that are true.  
 fire of love in our flesh and our bone.

The "you/your" mentioned in every stanza is never identified, but this 1979 hymn is clearly a corporate prayer to God on behalf of the diverse congregation who have assembled for worship, longing to be transformed and used as God's witnesses and for God's purposes.

# Sing a New Song unto the Lord 276

(Psalm 98)

*Refrain*

G D D#dim Em Am7

Sing a new song un - to the Lord; let your song be

D G D7/A G G D

sung from moun - tain's high. Sing a new song

D#dim Em Am7 D7 G *Fine*

un - to the Lord, sing-ing hal - le - lu - jah!

G D7/A Am/G D/F# Em

1 Shout with glad - ness! Dance for joy! O come be -

2 Rise, O chil - dren, from your sleep; your Sav - ior

3 Glad my soul for I have seen the glo - ry

Am7 D7sus D7 G D7/A

fore the Lord. And play for God on

now has come. He has turned your

of the Lord. The trum - pet sounds; the

Am/G D C Am7 Dsus D *to Refrain*

glad tam - bou-rines, and let your trum - pet sound.

sor - row to joy, and filled your soul with song.

dead shall be raised. I know my Sav - ior lives.

This loose paraphrase effectively conveys the joyful tone of Psalm 98, largely by incorporating allusions to many other Scriptures, such as Psalm 149:3, Romans 13:11, Psalm 16:9, 1 Corinthians 15:52, and Job 19:25. These familiar echoes help to give the text depth and breadth.

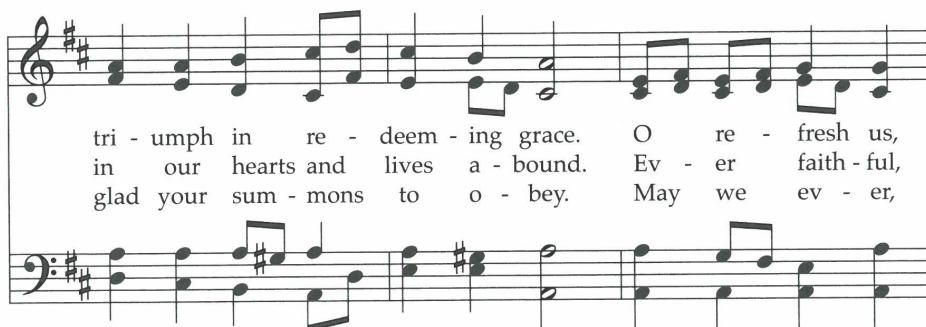
# 546 Lord, Dismiss Us with Your Blessing




1 Lord, dis - miss us with your bless - ing; fill our hearts with  
2 Thanks we give and ad - o - ra - tion for your gos - pel's  
3 Sav - ior, when your love shall call us, from our strug - gling



joy and peace; let us each, your love pos - sess - ing,  
joy - ful sound; may the fruits of your sal - va - tion  
pil - grim way, let no fear of death ap - pall us,



tri - umph in re - deem - ing grace. O re - fresh us,  
in our hearts and lives a - bound. Ev - er faith - ful,  
glad your sum - mons to o - bey. May we ev - er,



O re - fresh us, trav - eling through this wil - der - ness.  
ev - er faith - ful to your truth may we be found.  
may we ev - er reign with you in end - less day.

This hymn of corporate benediction is one of several using the same first line. It was written by a Baptist pastor who dedicated his entire ministry to a small church in rural Yorkshire. The tune used here was first transcribed from Sicilian sailors in the late 18th century.