



# Red Clay Creek

PRESBYTERIAN CHURCH

500 McKennans Church Road  
Wilmington DE  
(302) 998-0434 / rccpc.org

---

SERVICE FOR THE LORD'S DAY / SUNDAY, MARCH 16, 2025 / 10 AM

---

*Rooted in Love, Lighting the Way*

*Welcome to worship, welcome to Red Clay, welcome home!*

*Please visit the welcome cart in the narthex to learn more about our community.*

**Please silence your cell phones.**

## GATHER

### LIGHTING OF THE PEACE CANDLE

*Help me, dear Lord, to see my brother with the eyes of Christ, to hear my sister with the ears of Christ, to taste my neighbor's hunger with the mouth of Christ, to smell creation's beauty with the nose of Christ, to touch the world's pain with the hands of Christ, and to love life, each life, every life, with the heart of Christ. Amen.*

### CHIMING OF THE HOUR

### WELCOME AND ANNOUNCEMENTS

One: The Lord be with you.

**Many: And also with you.**

### \*CALL TO WORSHIP

One: "And rising very early in the morning, while it was still dark,

**Many: he departed and went out to a desolate place, and there he prayed."**

One: In the quiet of Gethsemane, Jesus took time to pray, embracing the space to connect with God, to renew His strength.

**Many: We come together, inspired by Jesus, seeking God's presence as we pause and make room for grace.**

**\*PROCESSIONAL HYMN 331      God of the Ages, Whose Almighty Hand**

*Your procession has come into view, O God, the procession of my God and my King into the sanctuary. In front are the singers, after them the musicians; with them there are ones playing tambourines... there is the little tribe of Benjamin, leading them." (Psalm 68:24)*

**\*PRAYER OF CONFESSION**

**One:** In the garden, Jesus knelt in prayer, seeking God's will, even as he faced the weight of all that was to come. Let us, too, come before God in honesty,

**Many:** **Gracious God, we come before you today as those who know the weight of decision and the heaviness of our choices. Like Jesus in Gethsemane, we offer you our fears, our doubts, and our desire to control. We confess that we often choose the path of least resistance, seeking comfort over surrender. We confess that we, too, have fallen asleep when called to stay awake with you. We have allowed fear to cloud our judgment, and our hearts have hesitated when your call was clear.**

**\*SUNG RESPONSE**

I Surrender All

*All to Jesus I surrender, all to Him I freely give;  
I will ever love and trust Him, in His presence daily live.  
All to Jesus I surrender, Lord, I give myself to Thee;  
Fill me with Thy love and power, let Thy blessing fall on me.  
I surrender all, I surrender all; all to Thee, my blessed Savior,  
I surrender all.*

**\*ASSURANCE OF PARDON**

**One:** Jesus walked the garden alone, but we are never alone. In His suffering, He makes us whole. In His surrender, we find our freedom.

**Many:** **We are forgiven, we are set free. Thanks be to God!**

**\*PASSING OF THE PEACE**

*Please greet those around you, wishing them "peace" or "the peace of Christ."*

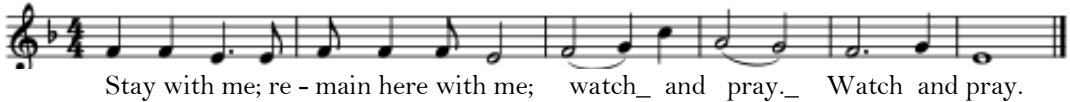
**CHILDREN'S MOMENT & THE LORD'S PRAYER**

*At the conclusion, we look forward to welcoming all children through 8<sup>th</sup> grade to the nursery or their Sunday school classes, as the congregation prepares to hear the sermon.*

# PRAYER

## PASTORAL PRAYER

*The Prayer will begin and end with the Taizé refrain “Stay with Me” [Hymn 204], which repeats the words of Jesus to Peter, James and John in the Garden of Gethsemane (Mark 14:34-38), immediately following the Last Supper.*



## CALL TO THE OFFERING

*We invite you to make an online donation or by placing a check or cash in the collection plate. Envelopes are available in the pews for specified giving. The gray envelopes are for our Roots & Rays Fund, which goes to creative outreach projects in the community.*



## MUSICAL OFFERING

The Old Rugged Cross

arr. Pinkston

## \*CONGREGATIONAL RESPONSE

Praise God, from Whom All Blessings Flow (Doxology)

***Praise God, from whom all blessings flow;  
praise him, all creatures here below;  
Praise him above, ye heavenly host;  
praise Father, Son, and Holy Ghost. Amen.***

## \*PRAYER OF DEDICATION

## HYMN

In Christ Alone

***In Christ alone, my hope is found  
He is my light, my strength, my song  
This Cornerstone, this solid Ground,  
Firm through the fiercest drought and storm  
What heights of love, what depths of peace  
When fears are stilled, when strivings cease  
My Comforter, my All in All, Here in the love of Christ I stand.***

*In Christ alone, who took on flesh  
Fullness of God in helpless babe  
This gift of love and righteousness  
Scorned by the ones He came to save  
Till on that cross as Jesus died, the wrath of God was satisfied  
For every sin on Him was laid, here in the death of Christ I live*

*No guilt in life, no fear in death, this is the power of Christ in me  
From life's first cry to final breath, Jesus commands my destiny  
No power of hell, no scheme of man can ever pluck me from His hand  
Till He returns or calls me home  
Here in the power of Christ I'll stand*

## LISTEN

SCRIPTURE LESSON      Jeremiah 25:15-18

*During this Season of Lent, our scripture verses will be "paired". The first highlights the "seeds" of foreshadowing; the latter highlights events leading Jesus to the olive trees in the garden of Gethsemane.*

CONGREGATIONAL RESPONSE      Go to Dark Gethsemane

*Go to dark Gethsemane, all who feel the tempter's power;  
your Redeemer's conflict see; watch with him one bitter hour;  
turn not from his griefs away; learn from Jesus Christ to pray.*

SCRIPTURE LESSON      Mark 14:32-36

SERMON      Take This Cup      Rev. Dr. Phillips

## SEND

\*HYMN 826

**Lift High the Cross**

\*BENEDICTION



Thanks to today's worship participants:

Festival Choir, *Music Ministry*  
Chip Gruber, *Usher Captain*  
Sandy Dudley, *Greeter*

Join us for refreshments & fellowship in Founders Hall following the postlude.

The flowers today are given in loving memory of Meredith "Tom" Thomas, Jr.,  
from Ann Thomas.

Through a series of in-person messages, devotionals, and worship opportunities,  
we hope to keep you connected to—and nurtured by—the Red Clay Creek  
Presbyterian Church community. Make sure you're signed up for our Thursday  
eNews, Facebook, and Instagram accounts. Visit [www.rccpc.org](http://www.rccpc.org).



### **The Breastplate Prayer of St. Patrick**

Christ with me,  
Christ before me,  
Christ behind me,  
Christ in me,  
Christ beneath me,  
Christ above me,  
Christ on my right,  
Christ on my left,  
Christ when I lie down,  
Christ when I sit down,  
Christ when I arise,

Christ in the heart of every man who thinks of me,  
Christ in the mouth of everyone who speaks of me,  
Christ in every eye that sees me,  
Christ in every ear that hears me



Red Clay Creek Presbyterian invites you to  
its *Signature Services & Events* during the coming year.

### **HOLY WEEK 2025**

- ◆ **Maundy Thursday** — April 17<sup>th</sup> | 7PM
- ◆ **Good Friday** — April 18<sup>th</sup> | 12PM
- ◆ **Easter Sunday** — April 20<sup>th</sup> | 9AM Resurrection Remembrance with Dove Release (*Memory Garden*) and 10AM Worship (*Sanctuary*)

### **KIRKIN' O' THE TARTAN — May 18<sup>th</sup>, 2025 | 10AM**

Kirk is the Scottish word for church, so a church celebration and blessing of the tartans in our Presbyterian church honors both local and church heritage since it was the Scots who brought the Presbyterian Church to America.

### **OUTDOOR SERVICE & PICNIC — June 1<sup>st</sup>, 2025 | 10AM**

Join us in the back meadow for worship and our annual picnic.

### **SUMMER ARTS CAMPS — JULY 2025 | 9AM-12PM**

- ◆ Instrumental Music | July 7-11 | Completed 4<sup>th</sup> Grade and Up
- ◆ General Arts | July 14-18 | Completed K-5<sup>th</sup> Grade
- ◆ TV & Film | July 21-25 | Completed K-8<sup>th</sup> Grade

### **HOMECOMING SUNDAY — September 7<sup>th</sup>, 2025 | 10AM**

We mark our return to regular church programming with the start of our fall sermon series and Sunday School kick off.

### **FALL CELEBRATION SUNDAY — October 26<sup>th</sup>, 2025 | 10AM**

A joyous worship service where we give Bibles to our 3rd graders and dedicate our pledges, followed by outdoor trunk-or-treat and a flag football game.

### **ANNIVERSARY SUNDAY — November 16<sup>th</sup>, 2025 | 10AM**

We give thanks for God's many blessings and our rich history of over 300 years.

### **CANDLELIGHT CHRISTMAS EVE — December 24<sup>th</sup>, 2025**

### **ROOTS AND RAYS SERVICE CHALLENGE 2026**

A month-long service effort each year, that directs our intention to the needs of our community.

# WELCOME TO RED CLAY

For LARGE print bulletins or children's bulletins, please ask an Usher.  
Restrooms are available. Just ask!

Welcome to worship, welcome to Red Clay, welcome home! Rooted in God's abiding love for all, our church is lighting the way for friendship, compassion, and service. Please join us for coffee hour in Founder's Hall after service, and stop by the welcome cart by the front entrance to learn more about our community. We hope you will worship with us again soon! If you are interested in deepening your participation, or if you just love Red Clay, it's time to think about membership! Contact Elder Karen Vordemberge at [kvordemberge@gmail.com](mailto:kvordemberge@gmail.com).

Here at Red Clay, we have numerous groups that are open and that welcome newcomers, including, e.g., Quilters, Crafters, "Friends and Fellowship" free luncheon for seniors, Bible study, ROMEOs ("Retired Old Men Eating Out"), Centering Prayer, "The Arcaders" social group for GenX and Millennials, Theology 101 with Pastor Nate, and Pickleball. Details can be found at [www.rccpc.org](http://www.rccpc.org)!

Children: Nursery care is available from 9:45AM through the conclusion of worship in Room 305 (just down the hallway from the sanctuary). After the Children's Moment, Pre-K - 2nd grade will adjourn to Room 303 and Grades 3-8 will adjourn to Room 202/204.

## UPCOMING EVENT SPOTLIGHT

### **RCCPC Lenten Food Drive for Food Bank of Delaware**

♥ Today through April 6<sup>th</sup> ♥

Our annual Lenten Food Drive begins Sunday, March 16 for Food Bank of Delaware. Bring in your donations to Founders Hall and help us fill our barrels!

## RED CLAY CREEK PRESBYTERIAN — MINISTERS, STAFF & CHAIRS

Rev. Dr. Nathaniel D. Phillips, *Senior Pastor/Head of Staff*

Rev. Emily Schwenker, *Parish Associate* ❖ Rev. Dr. Philip Jones, *Parish Associate*

Jeffrey Miller, *Director of Music*

Deena Andrews, *Director of Children's Choir*

Lisa Nichols, *Bell Choir Director*

Rachele Gilmore, *Director of Community Life* ❖ Ben Andrews, *Director of Christian Formation*

Jamie Russell, *Director of Children's Ministries*

Barbara Vanderkraats, *Pastoral Care Coordinator*

Judy Lozier, *Nursery Director* ❖ Shelby Beattie, *Sunday School Teacher* ❖ Sofia Martin, *Nursery Support*

Quiara Smith, *Sunday School Support*

Julie Reeder, *Office Coordinator* ❖ Dinyar Vania, *Facilities Manager*

Kelley Norton, *Administrative Assistant* ❖ Anthony M. Condoluci-Smith, *Financial Associate*

Charlie Hannagan, *Technology Support*

A. Leonhard, S. Armstrong, K. Barton, A. Bloom, D. Howarth, J. Schubel, P. Worrell, *Livestream Production*

Nancy James, *Clerk of Session* ❖ Kathy Ciabattoni, *Deacon Moderator*

Bill Ciabattoni, *Belong Chair* ❖ Darlyn Green-Kocher, *Nurture Chair*

Linda Reisor, *Reach Chair* ❖ Lois Galinat, *Rejoice Chair*

Brandon Wallace, *Finance Chair* ❖ John Gast, *Personnel Chair*

Mark Cozine, *Home Chair* ❖ Scott McHenry, *Administration Chair*

Andrew Bloom, *Community Partners* ❖ Marcia Kelly, *Memory Garden Chair*

### A NOTE ON THE LOGO

Our church has "**roots**" in the community that date back to 1722. We have been a good neighbor when we were surrounded by farmland up until now when we are surrounded by the suburbs. Our history helps us remember a time when people helped one another out because that was the right thing to do. We hope to be a sign that this kind of community can still exist. We also believe that, in order for that community to exist, we need to stay "rooted" in the Good News that God has chosen to love us - not because of who we are, but because of who God is. We call that grace.

That is where the "**rays**" come in. We hope to extend our love, and the love we know from the graciousness of God, in many ways today. This means engaging in friendships with those that Jesus would have made friends with - those that feel isolated for any number of reasons. We know we will never be perfect at that, but we will try! We are especially aware that churches have long held back from friendship with others based on age, economics, sexuality, race, disability, and the list goes on. We seek to be something different than that. There are so many stories about how Jesus entered into life-affirming friendships with those that others wouldn't. We seek to be like Jesus.

Right there, in the center of it all, is the **cross**. For us, the cross is a "Tree of Life." It represents how God broke into this world to establish a new way of being alive. It symbolizes how God calls us to love with freedom, with recklessness even, if it means connecting the world to the wonder of God's transformative presence.





# 331 God of the Ages, Whose Almighty Hand

(optional)

1 God of the a - ges, whose al-might - y  
 2 Thy love di - vine hath led us in the  
 3 From war's a - larms, from dead - ly pes - ti -  
 4 Re - fresh thy peo - ple on their toil - some

hand leads forth in beau - ty all the star - ry band  
 past. In this free land by thee our lot is cast.  
 lence, be thy strong arm our ev - er sure de - fense.  
 way. Lead us from night to nev - er - end - ing day.

of shin - ing worlds in splen - dor through the skies,  
 Be thou our rul - er, guard - ian, guide, and stay:  
 Thy true re - li - gion in our hearts in - crease.  
 Fill all our lives with love and grace di - vine,

our grate - ful songs be - fore thy throne a - rise.  
 thy word our law, thy paths our cho - sen way.  
 Thy boun - teous good - ness nour - ish us in peace.  
 and glo - ry, laud, and praise be ev - er thine.

This hymn was generated by 19th-century centennial celebrations: the words by the Declaration of Independence and the music by the adoption of the United States Constitution. Despite these origins, no specific nation is mentioned in this hymn of praise and prayer for peace.

# Lift High the Cross

826

Refrain  
Descant

Lift high the cross, the love of Christ pro - claim

Lift high the cross, the love of Christ pro - claim

till all the world a - dore his sa - cred name. *Fine*

till all the world a - dore his sa - cred name.

1 Come, Chris - tians, fol - low where our Sav - ior trod,  
2 All new - born ser - vants of the Cru - ci - fied  
3 O Lord, once lift - ed on the glo - rious tree,  
4 So shall our song of tri - umph ev - er be:

the Lamb vic - to - rious, Christ, the Son of God.  
bear on their brow the seal of Christ who died.  
your death has brought us life e - ter - nal - ly.  
praise to the Cru - ci - fied for vic - to - ry. *to Refrain*

This majestic hymn celebrates the paradox that for Christians a means of painful death has been transformed into a symbol of renewed life; a sign of defeat has become an emblem of victory. With the cross traced on our foreheads at Baptism we are marked as Christ's own forever.