



Red Clay Creek

PRESBYTERIAN CHURCH

500 McKennans Church Road
Wilmington DE
(302) 998-0434 / rccpc.org

SERVICE FOR THE LORD'S DAY / SUNDAY, MARCH 23, 2025 / 10 AM

Rooted in Love, Lighting the Way

Welcome to worship, welcome to Red Clay, welcome home!

Please visit the welcome cart in the narthex to learn more about our community.

Please silence your cell phones.

GATHER

LIGHTING OF THE PEACE CANDLE

Help me, dear Lord, to see my brother with the eyes of Christ, to hear my sister with the ears of Christ, to taste my neighbor's hunger with the mouth of Christ, to smell creation's beauty with the nose of Christ, to touch the world's pain with the hands of Christ, and to love life, each life, every life, with the heart of Christ. Amen.

PRELUDE Jesus, Keep Me Near the Cross

CHIMING OF THE HOUR

WELCOME AND ANNOUNCEMENTS

One: The Lord be with you.

Many: And also with you.

*CALL TO WORSHIP

One: "And rising very early in the morning, while it was still dark,

Many: he departed and went out to a desolate place, and there he prayed."

(continued)

One: In the quiet of Gethsemane, Jesus took time to pray, embracing the space to connect with God, to renew His strength.

Many: **We come together, inspired by Jesus, seeking God's presence as we pause and make room for grace.**

*HYMN 353 **My Hope Is Built on Nothing Less**

*PRAYER OF CONFESSION

One: In the garden, Jesus knelt in prayer, seeking God's will, even as he faced the weight of all that was to come. Let us, too, come before God in honesty,

Many: **Gracious God, we come before you today as those who know the weight of decision and the heaviness of our choices. Like Jesus in Gethsemane, we offer you our fears, our doubts, and our desire to control. We confess that we often choose the path of least resistance, seeking comfort over surrender. We confess that we, too, have fallen asleep when called to stay awake with you. We have allowed fear to cloud our judgment, and our hearts have hesitated when your call was clear.**

*SUNG RESPONSE I Surrender All

*All to Jesus I surrender, all to Him I freely give;
I will ever love and trust Him, in His presence daily live.
All to Jesus I surrender, Lord, I give myself to Thee;
Fill me with Thy love and power, let Thy blessing fall on me.
I surrender all, I surrender all; all to Thee, my blessed Savior,
I surrender all.*

*ASSURANCE OF PARDON

One: Jesus walked the garden alone, but we are never alone. In His suffering, He makes us whole. In His surrender, we find our freedom.

Many: **We are forgiven, we are set free. Thanks be to God!**

*PASSING OF THE PEACE

Please greet those around you, wishing them "peace" or "the peace of Christ."

CHILDREN'S MOMENT Your Love Awakens Me (Phil Wickham)

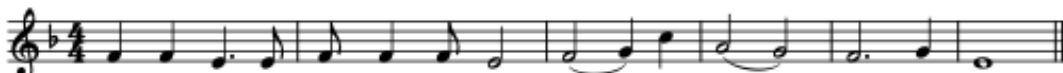
Children's Choir

At the conclusion, we look forward to welcoming all children through 8th grade to the nursery or their Sunday school classes, as the congregation prepares to hear the sermon.

PRAYER

PASTORAL PRAYER

The Prayer will begin and end with the Taizé refrain "Stay with Me" [Hymn 204], which repeats the words of Jesus to Peter, James and John in the Garden of Gethsemane (Mark 14:34-38), immediately following the Last Supper.



Stay with me; re - main here with me; watch_ and pray._ Watch and pray.

CALL TO THE OFFERING

We invite you to make an online donation or by placing a check or cash in the collection plate. Envelopes are available in the pews for specified giving. The gray envelopes are for our Roots & Rays Fund, which goes to creative outreach projects in the community.



MUSICAL OFFERING If I Have Wounded Any Soul Today Arr. by R. Nichols

*CONGREGATIONAL RESPONSE

Praise God, from Whom All Blessings Flow (Doxology)

***Praise God, from whom all blessings flow;
praise him, all creatures here below;
Praise him above, ye heavenly host;
praise Father, Son, and Holy Ghost. Amen.***

*PRAYER OF DEDICATION

HYMN 450

Be Thou My Vision

LISTEN

SCRIPTURE LESSON

Luke 9:28-36

During this Season of Lent, our scripture verses will be “paired”. The first highlights the “seeds” of foreshadowing; the latter highlights events leading Jesus to the olive trees in the garden of Gethsemane.

CONGREGATIONAL RESPONSE Go to Dark Gethsemane

***Go to dark Gethsemane, all who feel the tempter’s power;
your Redeemer’s conflict see; watch with him one bitter hour;
turn not from his griefs away; learn from Jesus Christ to pray.***

SCRIPTURE LESSON

Mark 14:32-42

SERMON

Stay Awake!

Rev. Chelsea Spyres

SEND

*HYMN 37

Let All Things Now Living

*BENEDICTION

POSTLUDE



We welcome Rev. Chelsea Spyres back to our pulpit today!
As most of you know, Rev. Chelsea currently serves as the Executive Director of Wilmington Kitchen Collective and as Pastor of Riverfront Ministries. As of July 1st, she will be transitioning to a new role, serving as Senior Pastor of Asbury United Methodist Church in Salisbury, MD! We celebrate this good news for Rev. Chelsea and note that she will be greatly missed by RCCPC and many others in Wilmington and its surrounding areas. Please wish her well today.

Thanks to today's worship participants:

Children's Choir, Bell Choir & Barbara Vanderkraats, *Music Ministry*
Nancy James, *Usher Captain*
Ellen Hinrichs, *Greeter*

Join us for refreshments & fellowship in Founders Hall following the postlude.

The flowers today are given in loving memory of Maura P. Sarjeant,
from Joe & Sandy Sarjeant.

Through a series of in-person messages, devotionals, and worship opportunities, we hope to keep you connected to—and nurtured by—the Red Clay Creek Presbyterian Church community. Make sure you're signed up for our Thursday eNews, Facebook, and Instagram accounts. Visit www.rccpc.org.



Red Clay Creek Presbyterian invites you to
its *Signature Services & Events* during the coming year.

HOLY WEEK 2025

- ◆ **Maundy Thursday** — April 17th | 7PM
- ◆ **Good Friday** — April 18th | 12PM
- ◆ **Easter Sunday** — April 20th | 9AM Resurrection Remembrance with Dove Release (*Memory Garden*) and 10AM Worship (*Sanctuary*)

KIRKIN' O' THE TARTAN — May 18th, 2025 | 10AM

Kirk is the Scottish word for church, so a church celebration and blessing of the tartans in our Presbyterian church honors both local and church heritage since it was the Scots who brought the Presbyterian Church to America.

OUTDOOR SERVICE & PICNIC — June 1st, 2025 | 10AM

Join us in the back meadow for worship and our annual picnic.

SUMMER ARTS CAMPS — JULY 2025 | 9AM-12PM

- ◆ Instrumental Music | July 7-11 | Completed 4th Grade and Up
- ◆ General Arts | July 14-18 | Completed K-5th Grade
- ◆ TV & Film | July 21-25 | Completed K-8th Grade

HOMEcoming SUNDAY — September 7th, 2025 | 10AM

We mark our return to regular church programming with the start of our fall sermon series and Sunday School kick off.

FALL CELEBRATION SUNDAY — October 26th, 2025 | 10AM

A joyous worship service where we give Bibles to our 3rd graders and dedicate our pledges, followed by outdoor trunk-or-treat and a flag football game.

ANNIVERSARY SUNDAY — November 16th, 2025 | 10AM

We give thanks for God's many blessings and our rich history of over 300 years.

CANDLELIGHT CHRISTMAS EVE — December 24th, 2025

ROOTS AND RAYS SERVICE CHALLENGE 2026

A month-long service effort each year, that directs our intention to the needs of our community.

WELCOME TO RED CLAY

For LARGE print bulletins or children's bulletins, please ask an Usher.
Restrooms are available. Just ask!

Welcome to worship, welcome to Red Clay, welcome home! Rooted in God's abiding love for all, our church is lighting the way for friendship, compassion, and service. Please join us for coffee hour in Founder's Hall after service, and stop by the welcome cart by the front entrance to learn more about our community. We hope you will worship with us again soon! If you are interested in deepening your participation, or if you just love Red Clay, it's time to think about membership! Contact Elder Karen Vordemberge at kvordemberge@gmail.com.

Here at Red Clay, we have numerous groups that are open and that welcome newcomers, including, e.g., Quilters, Crafters, "Friends and Fellowship" free luncheon for seniors, Bible study, ROMEOs ("Retired Old Men Eating Out"), Centering Prayer, "The Arcaders" social group for GenX and Millennials, Theology 101 with Pastor Nate, and Pickleball. Details can be found at www.rccpc.org!

Children: Nursery care is available from 9:45AM through the conclusion of worship in Room 305 (just down the hallway from the sanctuary). After the Children's Moment, Pre-K - 2nd grade will adjourn to Room 303 and Grades 3-8 will adjourn to Room 202/204.

UPCOMING EVENT SPOTLIGHT

Noonday Concert: Sunday, March 30 at 11:30 am

Cellist Jessie Reagen returns to join violinist Deena Andrews and pianist Jeffrey Miller for a program of solos and ensembles. Also joining us will be tenor Dinyar Vania, and Zimo Liu, our trumpeter in our Easter services. For this concert Zimo will play the piano and will be joined by Jessica Li to play piano duets.

RED CLAY CREEK PRESBYTERIAN — MINISTERS, STAFF & CHAIRS

Rev. Dr. Nathaniel D. Phillips, *Senior Pastor/Head of Staff*

Rev. Emily Schwenker, *Parish Associate* ❖ Rev. Dr. Philip Jones, *Parish Associate*

Jeffrey Miller, *Director of Music*

Deena Andrews, *Director of Children's Choir*

Lisa Nichols, *Bell Choir Director*

Rachele Gilmore, *Director of Community Life* ❖ Ben Andrews, *Director of Christian Formation*

Jamie Russell, *Director of Children's Ministries*

Barbara Vanderkraats, *Pastoral Care Coordinator*

Judy Lozier, *Nursery Director* ❖ Shelby Beattie, *Sunday School Teacher* ❖ Sofia Martin, *Nursery Support*

Quiara Smith, *Sunday School Support*

Julie Reeder, *Office Coordinator* ❖ Dinyar Vania, *Facilities Manager*

Kelley Norton, *Administrative Assistant* ❖ Anthony M. Condoluci-Smith, *Financial Associate*

Charlie Hannagan, *Technology Support*

A. Leonhard, S. Armstrong, K. Barton, A. Bloom, D. Howarth, J. Schubel, P. Worrell, *Livestream Production*

Nancy James, *Clerk of Session* ❖ Kathy Ciabattoni, *Deacon Moderator*

Bill Ciabattoni, *Belong Chair* ❖ Darlyn Green-Kocher, *Nurture Chair*

Linda Reisor, *Reach Chair* ❖ Lois Galinat, *Rejoice Chair*

Brandon Wallace, *Finance Chair* ❖ John Gast, *Personnel Chair*

Mark Cozine, *Home Chair* ❖ Scott McHenry, *Administration Chair*

Andrew Bloom, *Community Partners* ❖ Marcia Kelly, *Memory Garden Chair*

A NOTE ON THE LOGO

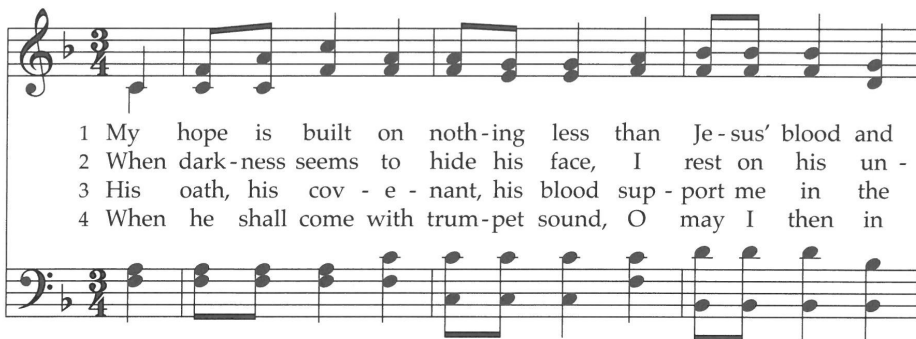
Our church has "**roots**" in the community that date back to 1722. We have been a good neighbor when we were surrounded by farmland up until now when we are surrounded by the suburbs. Our history helps us remember a time when people helped one another out because that was the right thing to do. We hope to be a sign that this kind of community can still exist. We also believe that, in order for that community to exist, we need to stay "rooted" in the Good News that God has chosen to love us - not because of who we are, but because of who God is. We call that grace.

That is where the "**rays**" come in. We hope to extend our love, and the love we know from the graciousness of God, in many ways today. This means engaging in friendships with those that Jesus would have made friends with - those that feel isolated for any number of reasons. We know we will never be perfect at that, but we will try! We are especially aware that churches have long held back from friendship with others based on age, economics, sexuality, race, disability, and the list goes on. We seek to be something different than that. There are so many stories about how Jesus entered into life-affirming friendships with those that others wouldn't. We seek to be like Jesus.

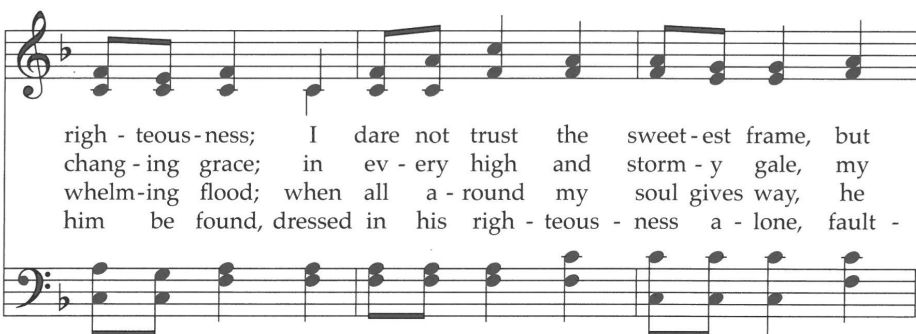
Right there, in the center of it all, is the **cross**. For us, the cross is a "Tree of Life." It represents how God broke into this world to establish a new way of being alive. It symbolizes how God calls us to love with freedom, with recklessness even, if it means connecting the world to the wonder of God's transformative presence.



My Hope Is Built on Nothing Less 353

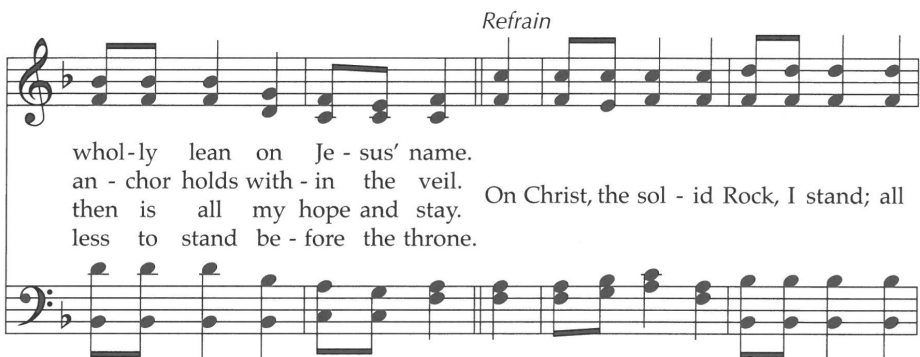


1 My hope is built on noth-ing less than Je-sus' blood and
2 When dark-ness seems to hide his face, I rest on his un -
3 His oath, his cov - e - nant, his blood sup - port me in the
4 When he shall come with trum-pet sound, O may I then in



righ - teous-ness; I dare not trust the sweet-est frame, but
chang - ing grace; in ev - ery high and storm - y gale, my
whelm-ing flood; when all a - round my soul gives way, he
him be found, dressed in his righ - teous - ness a - lone, fault -

Refrain



whol-ly lean on Je - sus' name.
an - chor holds with - in the veil. On Christ, the sol - id Rock, I stand; all
then is all my hope and stay. less to stand be - fore the throne.



oth-er ground is sink-ing sand; all oth-er ground is sink-ing sand.

This hymn develops the imagery of Jesus' remark (Matthew 7:24-27 / Luke 6:47-49) that those who believe in him and act on that belief are like someone who builds a house on a rock. The text is set to a tune created for it by a prolific 19th-century American composer and editor.

450

Be Thou My Vision

Capo 1: (D) E^b (G) A^b (D/F#) E^b/G (A7) B^b7 (D) E^b



1 Be thou my vi - sion, O Lord of my heart;
 2 Be thou my wis - dom, and thou my true Word;
 3 Rich - es I heed not, nor vain, emp - ty praise;
 4 High King of Heav - en, my vic - to - ry won,

(A) B^b (D) E^b (G) A^b (A) B^b



naught be all else to me, save that thou art;
 I ev - er with thee and thou with me, Lord;
 thou mine in - her - i - tance, now and al - ways;
 may I reach heav - en's joys, O bright heaven's Sun!

(G) A^b (D) E^b (F#m7) Gm7 (G) A^b (A) B^b



thou my best thought, by day or by night,
 thou my soul's shel - ter, and thou my high tower;
 thou and thou on - ly, first in my heart,
 Heart of my own heart, what - ev - er be - fall,

(Bm) Cm (D/F#) E^b/G (G) A^b (D) E^b



wak - ing or sleep - ing, thy pres - ence my light.
 raise thou me heaven - ward, O Power of my power.
 High King of Heav - en, my trea - sure thou art.
 still be my vi - sion, O Rul - er of all.

Guitar chords do not correspond with keyboard harmony.

These stanzas are selected from a 20th-century English poetic version of an Irish monastic prayer dating to the 10th century or before. They are set to an Irish folk melody that has proved popular and easily sung despite its lack of repetition and its wide range.

37 Let All Things Now Living



1 Let all things now liv - ing a song of thanks-giv - ing
 2 By law God en - forc - es, the stars in their cours - es,



to God our Cre - a - tor tri - um - phant - ly raise;
 the sun in its or - bit o - be - dient - ly shine;



who fashioned and made us, pro - tect - ed and stayed us,
 the hills and the moun-tains, the riv - ers and foun-tains,



by guid - ing us on to the end of our days.
 the depths of the o - cean pro - claim God di - vine.

Harmony

God's ban - ners are o'er us; pure light goes be - fore us,
 We too should be voic - ing our love and re - joic - ing;

a pil - lar of fire shin - ing forth in the night:
 with glad ad - o - ra - tion, a song let us raise,

Written for an easy-to-sing folk melody familiar in England as well as Wales, this 20th-century North American text bears many resemblances to both Psalm 148 and the traditional canticle *Benedicite, omnia opera Domini* (Bless the Lord, all you works of the Lord).

G D G Am D

till shad-ows have van-ish-ed, all fear-ful-ness ban-ish-ed,
till all things now liv-ing u-nite in thanks-giv-ing:

G C G D G

as for-ward we trav-el from light in-to light.
to God in the high-est, ho-san-na and praise!