



Red Clay Creek

PRESBYTERIAN CHURCH

500 McKennans Church Road
Wilmington DE
(302) 998-0434 / rccpc.org

CONFIRMATION SUNDAY / SUNDAY, MAY 4, 2025 / 10 AM

Rooted in Love, Lighting the Way
Welcome to worship, welcome to Red Clay, welcome home!

Please silence your cell phones.

GATHER

LIGHTING OF THE PEACE CANDLE

(Prayer of St. Francis of Assisi (Prayer for Peace))

Lord, make me an instrument of your peace: where there is hatred, let me sow love; where there is injury, pardon; where there is doubt, faith; where there is despair, hope; where there is darkness, light; where there is sadness, joy. O divine Master, grant that I may not so much seek to be consoled as to console, to be understood as to understand, to be loved as to love. For it is in giving that we receive, it is in pardoning that we are pardoned, and it is in dying that we are born to eternal life. Amen.

CHIMING OF THE HOUR

WELCOME AND ANNOUNCEMENTS

One: The Lord be with you.

Many: **And also with you.**

RECEPTION OF NEW MEMBERS *Taylor Abercrombie, Nick Waller, Tripp Way*

Many: **We give thanks for all that God has already given you and we welcome you in Christian love.**

***CALL TO WORSHIP**

One: In the beginning, before time, before people, before the world began,

Many: God was.

One: Here and now among us, beside us, enlisting the people of earth for the purposes of heaven,

Many: God is.

One: In the future, when we have turned to dust, and all we know has found its fulfillment,

Many: God will be.

One: Not denying the world but delighting in it, not understanding the world, but redeeming it, through Jesus Christ, by the power of the Holy Spirit,

Many: God was, God is, God will be.

One: And so, we were, we are, and we will be...

Many: Rooted in love, lighting the way.

***PROCESSIONAL HYMN 268 Crown Him with Many Crowns**

"Your procession has come into view, O God, the procession of my God and my King into the sanctuary. In front are the singers, after them the musicians; with them are ones playing tambourines... there is the little tribe of Benjamin, leading them." (Psalm 68:24)

***PRAYER OF CONFESSION**

One: Holy God, Maker of all,

Many: Have mercy on us.

One: Jesus Christ, Servant of the poor,

Many: Have mercy on us.

One: Holy Spirit, Breath of life,

Many: Have mercy on us.

One: Let us in silence confess our faults and admit our frailty.

(a time of silence)

Many: Before God, with the people of God, we confess to our brokenness: in the ways we wound our lives, the lives of others, and the life of the world. Amen.

***SUNG RESPONSE**

Sometimes by Step

Rich Mullins

(sung first by soloist; then congregation will be invited to join)

***O God, You are my God, and I will ever praise You
O God, You are my God, and I will ever praise You***

(continued)

***And I will seek You in the morning, and I will learn to walk in Your ways
And step by step You'll lead me, and I will follow You all of my days***

***ASSURANCE OF PARDON**

One: May God forgive you, Christ renew you, and the spirit enable you to grow in love.

Many: Amen.

***PASSING OF THE PEACE**

Please greet those around you, wishing them “peace” or “the peace of Christ.”

CHILDREN’S MOMENT & THE LORD’S PRAYER

At the conclusion, we look forward to welcoming all children through 8th grade to the nursery or their Sunday school classes, as the congregation prepares to hear the sermon.

***SUNG RESPONSE**

Sometimes by Step

Rich Mullins

***And I will seek You in the morning, and I will learn to walk in Your ways
And step by step You'll lead me and I will follow You all of my days***

PRAYER

CONFIRMATION RECOGNITION

*Benjamin Conly, Marshall Eppelimer, Madelyn Haggerty, Riley Harter, Connor Hawley,
Cole Kennedy, Luke Meyer, Marlea Rigney, Daniel Woodward, Madison Yarborough*

QUESTIONS OF MEMBERSHIP

RITE OF CONFIRMATION

CONGREGATIONAL RESPONSE

Many: We give thanks for all that God has already given you and we welcome you in Christian love. As members together with you in the body of Christ and in this congregation, we renew our covenant to faithfully participate in the ministries of the church by our prayers, presence, gifts, service and witness that in everything God may be glorified through Jesus Christ.

CALL TO THE OFFERING

We invite you to make an online donation or by placing a check or cash in the collection plate. Envelopes are available in the pews for specified giving. The gray envelopes are for our Roots & Rays Fund, which goes to creative outreach projects in the community.



MUSICAL OFFERING

Psalm 150

Franck

CONGREGATIONAL RESPONSE

Praise God, from Whom All Blessings Flow

Praise God, from whom all blessings flow.

Praise God, all creatures high and low. Alleluia, alleluia!

Praise God, in Jesus fully known: Creator, Word, and Spirit one.

Alleluia, alleluia! Alleluia, alleluia, alleluia!

PRAYER OF DEDICATION

HYMN

Cornerstone

***My hope is built on nothing less than Jesus' blood and righteousness
I dare not trust the sweetest frame but wholly trust in Jesus' Name***

**Refrain *Christ alone, Cornerstone, weak made strong in the Savior's love
Through the storm, He is Lord, Lord of all***

***When darkness seems to hide His face, I rest on His unchanging grace
In every high and stormy gale, my anchor holds within the veil* (refrain)**

***When He shall come with trumpet sound, oh may I then in Him be found
Dressed in His righteousness alone, faultless stand before the throne* (refrain)**

LISTEN

SCRIPTURE LESSON

Acts 2:36-41

SERMON

Step by Step: Step In

Rev. Dr. Phillips

SEND

*HYMN 69

I, the Lord of Sea and Sky (Here I Am, Lord)

*BENEDICTION



Thanks to today's worship participants:

Festival Choir, *Music Ministry*

Bob Kissell, *Usher Captain*

Leslie Gast, *Greeter*

The flowers today are given in honor of Kaitlyn Tully on the occasion of her Masters Graduation Day, with love from her grandmother, Gail Ahrens.

Join us for coffee and the Confirmation receiving line in Founders Hall
following the postlude!

Through a series of in-person messages, devotionals, and worship opportunities, we hope to keep you connected to—and nurtured by—the Red Clay Creek Presbyterian Church community. Make sure you're signed up for our Thursday eNews, Facebook, and Instagram accounts. Visit www.rccpc.org.



Red Clay Creek Presbyterian invites you to
its *Signature Services & Events* during the coming year.

KIRKIN' O' THE TARTAN — May 18th, 2025 | 10AM

Kirk is the Scottish word for church, so a church celebration and blessing of the tartans in our Presbyterian church honors both local and church heritage since it was the Scots who brought the Presbyterian Church to America.

OUTDOOR SERVICE & PICNIC — June 1st, 2025 | 10AM

Join us in the back meadow for worship and our annual picnic.

SUMMER ARTS CAMPS — JULY 2025 | 9AM-12PM

- ◆ Instrumental Music | July 7-11 | Completed 4th Grade and Up
- ◆ General Arts | July 14-18 | Completed K-5th Grade
- ◆ TV & Film | July 21-25 | Completed K-8th Grade

HOMEcoming SUNDAY — September 7th, 2025 | 10AM

We mark our return to regular church programming with the start of our fall sermon series and Sunday School kick off.

FALL CELEBRATION SUNDAY — October 26th, 2025 | 10AM

A joyous worship service where we give Bibles to our 3rd graders and dedicate our pledges, followed by outdoor trunk-or-treat and a flag football game.

ANNIVERSARY SUNDAY — November 16th, 2025 | 10AM

We give thanks for God's many blessings and our rich history of over 300 years.

CANDLELIGHT CHRISTMAS EVE — December 24th, 2025

ROOTS AND RAYS SERVICE CHALLENGE 2026

A month-long service effort each year, that directs our intention to the needs of our community.

HOLY WEEK 2026

- ◆ Maundy Thursday — April 2nd | 7PM
- ◆ Good Friday — April 3rd | 12PM
- ◆ Easter Sunday — April 5th | 10AM Worship

WELCOME TO RED CLAY

For LARGE print bulletins or children's bulletins, please ask an Usher.
Restrooms are available. Just ask!

Welcome to worship, welcome to Red Clay, welcome home! Rooted in God's abiding love for all, our church is lighting the way for friendship, compassion, and service. Please join us for coffee hour in Founder's Hall after service, and stop by the welcome cart by the front entrance to learn more about our community. We hope you will worship with us again soon! If you are interested in deepening your participation, or if you just love Red Clay, it's time to think about membership! Contact Elder Karen Vordemberge at kvordemberge@gmail.com.

Here at Red Clay, we have numerous groups that are open and that welcome newcomers, including, e.g., Quilters, Crafters, "Friends and Fellowship" free luncheon for seniors, Bible study, ROMEOS ("Retired Old Men Eating Out"), Centering Prayer, "The Arcaders" social group for GenX and Millennials, Theology 101 with Pastor Nate, and Pickleball. Details can be found at www.rccpc.org!

Children: Nursery care is available from 9:45AM through the conclusion of worship in Room 305 (just down the hallway from the sanctuary). After the Children's Moment, Pre-K - 2nd grade will adjourn to Room 303 and Grades 3-8 will adjourn to Room 202/204.

UPCOMING EVENT SPOTLIGHT

**RSVP Now: Friends & Fellowship Luncheon on
Tuesday, May 13th**

Our last "Friends & Fellowship" luncheon until the Fall will take place in Founders Hall on Tuesday, May 13th. All are welcome to join us for this luncheon shared with church staff, members, and friends of Red Clay! Please RSVP online or in Founders Hall by our deadline—Tuesday, May 6th.

RED CLAY CREEK PRESBYTERIAN — MINISTERS, STAFF & CHAIRS

Rev. Dr. Nathaniel D. Phillips, *Senior Pastor/Head of Staff*
Rev. Emily Schwenker, *Parish Associate* ❖ Rev. Dr. Philip Jones, *Parish Associate*

Jeffrey Miller, *Director of Music*
Deena Andrews, *Director of Children's Choir*
Lisa Nichols, *Bell Choir Director*

Rachele Gilmore, *Director of Community Life* ❖ Ben Andrews, *Director of Christian Formation*
Jamie Russell, *Director of Children's Ministries*
Barbara Vanderkraats, *Pastoral Care Coordinator*
Judy Lozier, *Nursery Director* ❖ Shelby Beattie, *Sunday School Teacher* ❖ Sofia Martin, *Nursery Support*
Quiara Smith, *Sunday School Support*

Julie Reeder, *Office Coordinator* ❖ Dinyar Vania, *Facilities Manager*
Kelley Norton, *Administrative Assistant* ❖ Anthony M. Condoluci-Smith, *Financial Associate*

Charlie Hannagan, *Technology Support*
A. Leonhard, S. Armstrong, K. Barton, A. Bloom, D. Howarth, J. Schubel, P. Worrell, *Livestream Production*

Nancy James, *Clerk of Session* ❖ Kathy Ciabattoni, *Deacon Moderator*
Bill Ciabattoni, *Belong Chair* ❖ Darlyn Green-Kocher, *Nurture Chair*
Linda Reisor, *Reach Chair* ❖ Lois Galinat, *Rejoice Chair*
Brandon Wallace, *Finance Chair* ❖ John Gast, *Personnel Chair*
Mark Cozine, *Home Chair* ❖ Scott McHenry, *Administration Chair*
Andrew Bloom, *Community Partners* ❖ Marcia Kelly, *Memory Garden Chair*

* For a complete list of all Session Ruling Elders and Board of Deacons members, please refer to <https://www.rccpc.org>.*

A NOTE ON THE LOGO

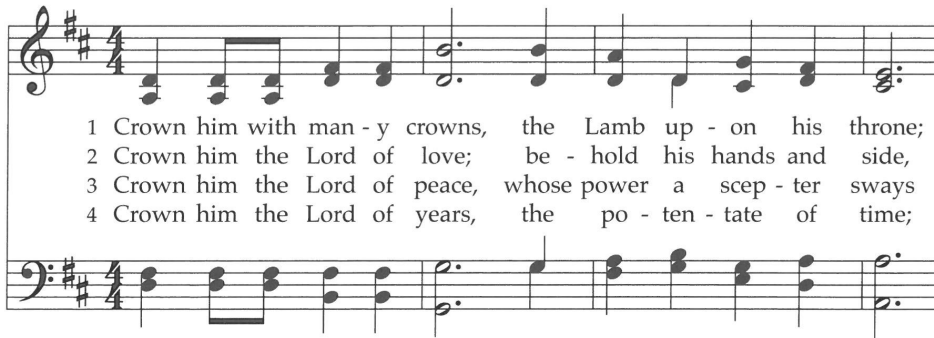
Our church has "**roots**" in the community that date back to 1722. We have been a good neighbor when we were surrounded by farmland up until now when we are surrounded by the suburbs. Our history helps us remember a time when people helped one another out because that was the right thing to do. We hope to be a sign that this kind of community can still exist. We also believe that, in order for that community to exist, we need to stay "rooted" in the Good News that God has chosen to love us - not because of who we are, but because of who God is. We call that grace.

That is where the "**rays**" come in. We hope to extend our love, and the love we know from the graciousness of God, in many ways today. This means engaging in friendships with those that Jesus would have made friends with - those that feel isolated for any number of reasons. We know we will never be perfect at that, but we will try! We are especially aware that churches have long held back from friendship with others based on age, economics, sexuality, race, disability, and the list goes on. We seek to be something different than that. There are so many stories about how Jesus entered into life-affirming friendships with those that others wouldn't. We seek to be like Jesus.

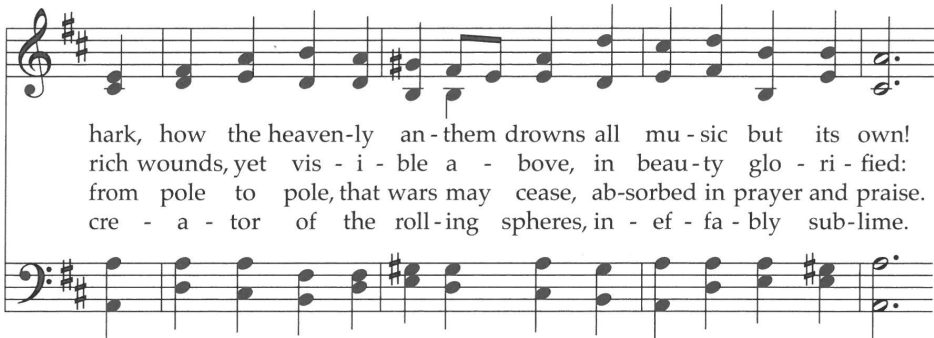
Right there, in the center of it all, is the **cross**. For us, the cross is a "Tree of Life." It represents how God broke into this world to establish a new way of being alive. It symbolizes how God calls us to love with freedom, with recklessness even, if it means connecting the world to the wonder of God's transformative presence.



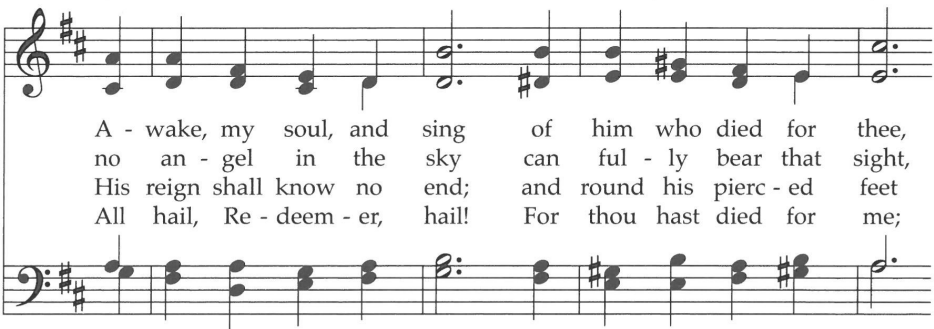
Crown Him with Many Crowns 268



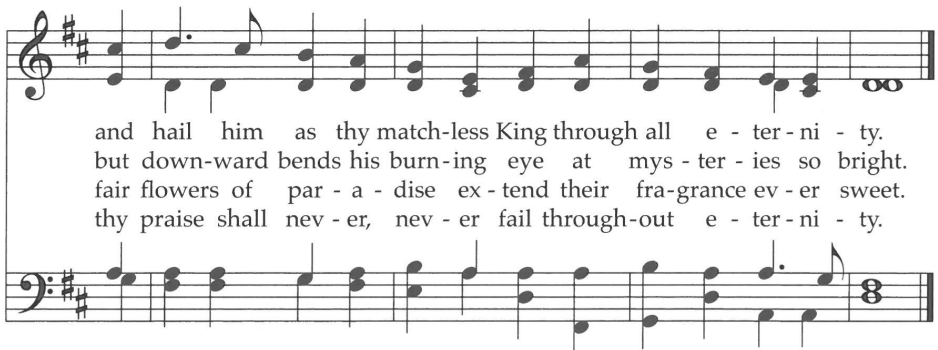
1 Crown him with man - y crowns, the Lamb up - on his throne;
 2 Crown him the Lord of love; be - hold his hands and side,
 3 Crown him the Lord of peace, whose power a scep - ter sways
 4 Crown him the Lord of years, the po - ten - tate of time;



hark, how the heaven-ly an - them drowns all mu - sic but its own!
 rich wounds, yet vis - i - ble a - bove, in beau - ty glo - ri - fied:
 from pole to pole, that wars may cease, ab - sorbed in prayer and praise.
 cre - a - tor of the roll - ing spheres, in - ef - fa - bly sub - lime.



A - wake, my soul, and sing of him who died for thee,
 no an - gel in the sky can ful - ly bear that sight,
 His reign shall know no end; and round his pierc - ed feet
 All hail, Re - deem - er, hail! For thou hast died for me;

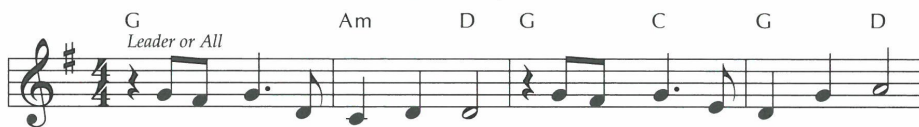


and hail him as thy match-less King through all e - ter - ni - ty.
 but down-ward bends his burn-ing eye at mys - ter - ies so bright.
 fair flowers of par - a - dise ex - tend their fra-grance ev - er sweet.
 thy praise shall nev - er, nev - er fail through-out e - ter - ni - ty.

This text is so familiar that it is easy to miss all its paradox, mystery, suffering, and beauty; it rewards careful reading and meditation outside corporate worship. The tune's composer, chapel organist at Windsor Castle, had much experience in creating a royal sound.

I, the Lord of Sea and Sky

Here I Am, Lord



1 I, the Lord of sea and sky, I have heard my peo - ple cry.
 2 I, the Lord of snow and rain, I have borne my peo - ple's pain.
 3 I, the Lord of wind and flame, I will tend the poor and lame.



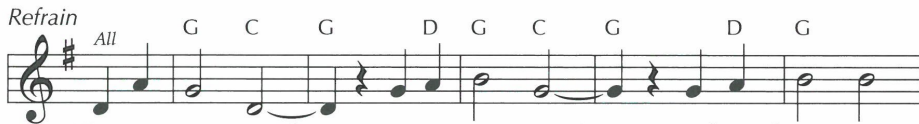
All who dwell in dark and sin my hand will save. I, who
 I have wept for love of them. They turn a - way. I will
 I will set a feast for them. My hand will save. Fin - est



made the stars of night, I will make their dark - ness bright.
 break their hearts of stone, give them hearts for love a - lone.
 bread I will pro - vide till their hearts be sat - is - fied.



Who will bear my light to them? Whom shall I send?
 I will speak my word to them. Whom shall I send?
 I will give my life to them. Whom shall I send?



Here I am, Lord. Is it I, Lord? I have heard you



call - ing in the night. I will go, Lord, if you



lead me. I will hold your peo - ple in my heart.

The stanzas here need to be understood as representing the voice of God, while the refrain (based on Isaiah 6:8) is the faithful human response to God's call. This becomes clearer if a leader or small group sings the stanzas, with the congregation joining on the refrain.