



Red Clay Creek

PRESBYTERIAN CHURCH

500 McKennans Church Road
Wilmington DE 19808
(302) 998-0434 / rccpc.org

SERVICE FOR THE LORD'S DAY / SUNDAY, SEPTEMBER 21, 2025 / 10 AM

Rooted in Love, Lighting the Way
Welcome to worship, welcome to Red Clay, welcome home!

Please silence your cell phones.

GATHER

LIGHTING OF THE PEACE CANDLE

Rev. William Sloane Coffin

Gracious God, grant us the grace never to sell ourselves short, the grace to risk something big for something good, and the grace to remember that this world is now too dangerous for anything but the truth and too small for anything but love.

CHIMING OF THE HOUR

WELCOME AND ANNOUNCEMENTS

One: The Lord be with you.

Many: And also with you.

*CALL TO WORSHIP

(from Acts 9)

One: "Suddenly a light from heaven flashed around him, and he fell to the ground and heard a voice saying..."

Many: "Saul, Saul, why do you persecute me?"

One: "I am Jesus, whom you are persecuting. But get up and enter the city, and you will be told what you are to do." Like with Saul, God calls us by name, shines light into our lives, and sets us on a new path.

Many: Let us worship God together.

*PROCESSIONAL HYMN 10 **Sing Glory to the Name of God**

"Your procession has come into view, O God, the procession of my God and my King into the sanctuary. In front are the singers, after them the musicians; with them are ones playing tambourines... there is the little tribe of Benjamin, leading them." (Psalm 68:24)

*PRAYER OF CONFESSION

Many: God of the road ahead, we confess that we often miss Your signs. We rush past what You are revealing, clinging to old maps and familiar paths. We like to know what's next. We like to be in control. But sometimes You call us to stop, to sit in the dark for a while, to wait for a hand to lead us. Forgive our impatience. Forgive our fear of the unknown. Forgive the ways we resist being changed. Shine Your light around us. Speak our name with love. And when the way is not clear, teach us to trust your son Jesus, who walks beside us.

*ASSURANCE OF PARDON

One: Just as Saul was called by name and led toward grace, so too are we called, forgiven, and made new. Hear and believe the Good News—in Jesus Christ, your past does not define you.

Many: In Jesus Christ, we are forgiven—and set free to walk a new road.
Thanks be to God!

*SUNG RESPONSE Glory to God, Whose Goodness Shines on Me (vs.1)

*Glory to God, whose goodness shines on me,
and to the Son, whose grace has pardoned me,
And to the Spirit, whose love has set me free.
As it was in the beginning, is now and ever shall be. Amen.*

*PASSING OF THE PEACE

Please greet those around you, wishing them “peace” or “the peace of Christ.”

CHILDREN'S MOMENT & THE LORD'S PRAYER

At the conclusion, we look forward to welcoming all children through 8th grade to the nursery or their Sunday school classes, as the congregation prepares to hear the sermon.

(vs.2)

As it was in the beginning, is now and ever shall be. Amen.

THE SACRAMENT OF BAPTISM

Jodi Antoinette Whitehead,

daughter of Brian Whitehead & Jillian Earley Whitehead

*Baptized in water, sealed by the Spirit, cleansed by the blood of Christ our King;
Heirs of salvation, trusting the promise, faithfully now God's praises we sing.*

PRAYER OF CONSECRATION & BAPTISM

*Baptized in water, sealed by the Spirit, dead in the tomb with Christ our King;
One with his rising, freed and forgiven, thankfully now God's praises we sing.*

*Baptized in water, sealed by the Spirit, marked with the sign of Christ our King;
Born of the Spirit, we are God's children; joyfully now God's praises we sing.*

WELCOME OF THE NEWLY BAPTIZED

Many: With joy and thanksgiving we welcome you into Christ's church to share with us in his ministry, for we are all one in Christ.

PRAYER

PASTORAL PRAYER

CALL TO THE OFFERING

We invite you to make an online donation or by placing a check or cash in the collection plate. Envelopes are available in the pews for specified giving. The gray envelopes are for our Roots & Rays Fund, which goes to creative outreach projects in the community.



MUSICAL OFFERING

Sanctus
Dinyar Vania, Soloist

Gounod

Sanctus, sanctus, sanctus Dominus Deus Sabaoth
Holy, Holy, Holy Lord God of Hosts

Pleni sunt coeli et terra gloria tua. Hosanna in excelsis.
Heaven and earth are full of your glory. Hosanna in the highest.

*CONGREGATIONAL RESPONSE Cornerstone

***My hope is built on nothing less than Jesus' blood and righteousness
I dare not trust the sweetest frame but wholly trust in Jesus' Name***

***Christ alone, Cornerstone, weak made strong in the Savior's love
Through the storm, He is Lord, Lord of all***

*PRAYER OF DEDICATION

HYMN 314 **Longing for Light, We Wait in Darkness**

LISTEN

OLD TESTAMENT LESSON Exodus 3:1–6

MUSICAL OFFERING

Amani Utupe Na Ustawi (Grant Us Peace, Give Us Courage)

Simms

NEW TESTAMENT LESSON Acts 9:1-6

SERMON

Damascus Road: Rolling Along

Rev. Dr. Phillips

SEND

*HYMN 826

Lift High the Cross

*BENEDICTION



Thanks to today's worship participants:

Festival Choir & Dinyar Vania, *Music Ministry*
Mark Cozine, *Usher Captain*
Gail Ahrens, *Greeter*

The flowers today are given in loving memory of Charles Tielleman, husband,
from his wife Shirley.

Join us for coffee & fellowship in Founders Hall following the postlude!
Don't forget to make a "Car Care Bag"—a bag whose purpose is to
keep in your car, ready to share with someone experiencing
homelessness or in need of a little extra care. All supplies will be
provided; we're just in need of a little hands-on help to prepare the
bags, write a note of encouragement, and cover the project with prayer!

Through a series of in-person messages, devotionals, and worship opportunities,
we hope to keep you connected to—and nurtured by—the Red Clay Creek
Presbyterian Church community. Make sure you're signed up for our Thursday
eNews, Facebook, and Instagram accounts. Visit www.rccpc.org.



ADULT SMALL GROUPS

Join an Adult Small Group this fall! Small Groups are all about real life change through authentic relationships. God designed us for community, and in Small Groups, we find a place to connect, grow, and support one another in our faith journey. Whether you're looking for a fun activity or a Bible study, there's a group for you. Life is better together, and we can't wait for you to experience the power of Small Groups!

Here are some of our small groups:

- Adult Forum
- Afternoon Games Group (AGGies)
- Art Group
- Arcaders Group
- Bell Choir
- Body & Soul Bible Study Group
- Care Choir
- Caregiver Support Group
- Centering Prayer Group
- Chancel Choir
- Counted Cross Stitch Group
- Craft Group
- Faith, Hope & Love Quilt Group
- Knitting/Crocheting Handwork Group
- Monday AM Bible Study
- Men's Bible Study
- Pastor's Bible Study
- Parables Bible Study
- Romeo's Group

SCAN ME



For more information: rccpc.org/smallgroups/



CHILDREN'S MINISTRY

BIRTH - 8TH GRADE

NURSERY & SUNDAY SCHOOL

EVERY SUNDAY - DURING WORSHIP

- Nursery care is available for our youngest children
- Sunday school for children in Pre-K - 8th grade begins after the Children's Moment
- Questions? Contact jamie@rccpc.org

CHILDREN'S CHOIR

BEGINS SEPTEMBER 21 - 11:00 - 11:30AM

- Children in kindergarten - 5th grade meet weekly after Sunday School to learn and sing together
- Questions? Contact deena@rccpc.org

RECESS AT RED CLAY

SEPTEMBER 28 & OCTOBER 19 - 11:30 - 1:00PM

- New this fall, Recess at Red Clay is a 1x per month play and fellowship time for children (nursery - 3rd grade) and their families. Lunch will be provided, followed by playing at the playground.
- Questions? Contact jamie@rccpc.org

YOUNGER YOUTH

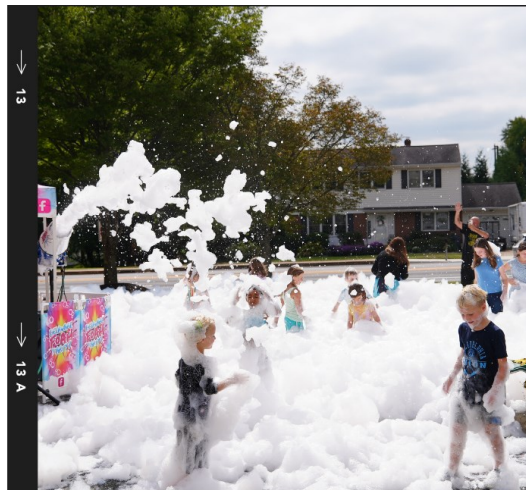
SEPTEMBER 28 & OCTOBER 19 - 11:30 - 1:00PM

- Meeting 1x per month, 4th-7th graders have lunch and enjoy an activity together. This month we'll be making mini-golf obstacles.
- Questions? Contact jamie@rccpc.org

OPEN GYM

OCTOBER 10 - 12:00 - 5:00PM

- Spend your day off from school with us! Inflatable, games, activities, and more. Lunch will be served. An adult must stay.
- Questions? Contact jamie@rccpc.org

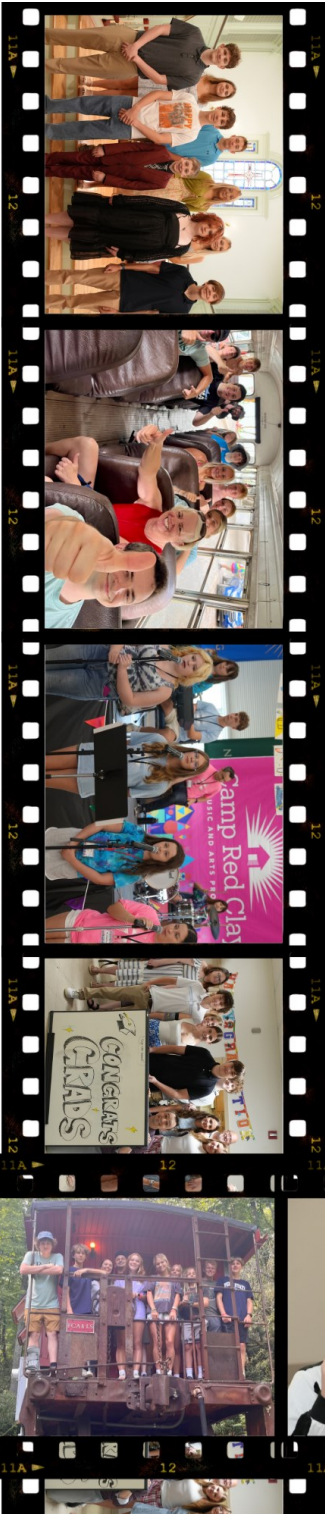


6TH-12TH GRADE YOUTH GROUP

We welcome all youth to Red Clay! We hang out together and learn about God through our various activities and events. Any given weekend, we might be playing pickleball in our Founders Hall gym, going to a soccer game, having a midnighter, playing sports and games, learning about God through the arts, or volunteering in our community. We are proud of our scouting program, confirmation classes, mission trips, and a budding high school service group. If you have any specific questions or are interested in joining the youth group, please contact Ben Andrews at ben@rccpc.org; see rccpc.org/connect/youth.

- Camp Red Clay
- Confirmation
- Orff Ensemble
- Midnighters
- Mission Trips
- Scouts (Troop 29)
- Sunday School
- Youth Group

SCAN ME





SERVICE

LOCAL, REGIONAL & GLOBAL

SEPTEMBER

- Roots & Rays Kids Wish List (begins 9/30)
- Annual Picnic for Friendship House Residents

OCTOBER

- Spooky Service Night for Youth (10/12)

NOVEMBER

- Thanksgiving meals for Friendship House & Table of Plenty

DECEMBER

- Stock Santa's Shop Toy Drive for FH
- Santa's 2nd Run Gifts for local families

JANUARY

- Plan for our annual Roots & Rays Service Challenge

FEBRUARY

- R&R Service Challenge begins
- Rise Against Hunger (2/22)
- Lenten Food drive begins for Food Bank

MARCH

- Service Challenge events continue
- Food Bank Saturday sessions

APRIL

- Easter Meals for Table of Plenty and local schools

MAY

- Highmark Walk for Friendship House

JUNE & JULY

- Arts Camps begin
- Mission to Maine (July 22- Aug. 1)

AUGUST

- Back to School Store for School uniforms and school supplies

YEAR ROUND MINISTRIES

Local Ministries:

Friendship House of DE, Meeting Ground, Humane Animal Partners, Food Bank of DE, Meals on Wheels, Table of Plenty, Emmanuel Dining Room

International Ministries:

Sibanye (S. Africa), CDCA Nicaragua & CEDCAS (Costa Rica)



Our serving ministries, led by Rachele Gilmore (our Director of Community Life) are year-round! If you want more information on how to get involved email Rachele at rachele@rccpc.org to receive our weekly outreach newsletter *The Roots & Rays Rundown*.

Red Clay Creek Presbyterian invites you to
its *Signature Services & Events* during the coming year.

SERVICE OF HOPE & HEALING — September 28th, 2025 | 11:30 AM

Join us for a quiet service of prayer and reflection with opportunities for individual prayers for healing, hope, comfort or peace and anointing with oil.

FALL CELEBRATION SUNDAY — October 26th, 2025 | 10AM

A joyous worship service where we give Bibles to our 3rd graders and dedicate our pledges, followed by outdoor trunk-or-treat and a flag football game.

ANNIVERSARY SUNDAY — November 16th, 2025 | 10AM

We give thanks for God's many blessings and our rich history of over 300 years.

CANDLELIGHT CHRISTMAS EVE — December 24th, 2025

- ♦ Family Service with Impromptu Pageant | 4PM
- ♦ Holy Night Service with Candlelight | 8PM
- ♦ Candlelight & Communion | 11PM

ROOTS AND RAYS SERVICE CHALLENGE — Feb. 22nd–Mar. 22nd, 2026

A month-long service effort each year, that directs our intention to the needs of our community.

HOLY WEEK 2026

- ♦ Maundy Thursday — April 2nd; Good Friday — April 3rd
- ♦ Easter Sunday — April 5th | 10AM Worship

KIRKIN' O' THE TARTAN — April 26th, 2026 | 10AM

Kirk is the Scottish word for church, so a church celebration and blessing of the tartans in our Presbyterian church honors both local and church heritage since it was the Scots who brought the Presbyterian Church to America.

OUTDOOR SERVICE & PICNIC — June 7th, 2026 | 10AM

Join us in the back meadow for worship and our annual picnic.

SUMMER ARTS CAMPS — July 2026 | 9AM-12PM

Kids will have music, drama, visual arts, snacks, and FUN, culminating with Bingo and performance night, as well as Youth Sunday.

WELCOME TO RED CLAY

For LARGE print bulletins or children's bulletins, please ask an Usher.
Restrooms are available. Just ask!

Welcome to worship, welcome to Red Clay, welcome home! Rooted in God's abiding love for all, our church is lighting the way for friendship, compassion, and service. Please join us for coffee hour in Founder's Hall after service, and stop by the welcome cart by the front entrance to learn more about our community. We hope you will worship with us again soon! If you are interested in deepening your participation, or if you just love Red Clay, it's time to think about membership! Contact Elder Karen Vordemberge at kvordemberge@gmail.com.

Here at Red Clay, we have numerous groups that are open and that welcome newcomers, including, e.g., Quilters, Crafters, "Friends and Fellowship" free luncheon for seniors, Bible study, ROMEOS ("Retired Old Men Eating Out"), Centering Prayer, "The Arcaders" social group for GenX and Millennials, Theology 101 with Pastor Nate, and Pickleball. Details can be found at www.rccpc.org!

Children: Nursery care is available from 9:45AM through the conclusion of worship in Room 305 (just down the hallway from the sanctuary). After the Children's Moment, Pre-K - Kindergarteners will adjourn to Room 303, Grades 1-3 will adjourn to Room 206, and Grades 4-8 will adjourn to Room 202/204.

UPCOMING EVENT SPOTLIGHT

Friday, September 26: Classical Percussion Recital

Join us for Ben's classical percussion recital at 7 PM in the sanctuary, showcasing his Master's degree work at West Chester University. The event features Deena Andrews and includes marimba and violin duets, along with familiar hymns and songs performed with a professional jazz combo!

RED CLAY CREEK PRESBYTERIAN — MINISTERS, STAFF & CHAIRS

Rev. Dr. Nathaniel D. Phillips, *Senior Pastor/Head of Staff*

Rev. Emily Schwenker ❖ Rev. Dr. Philip Jones

Jeffrey Miller, *Director of Music*

Deena Andrews, *Director of Children's Choir*

Lisa Nichols, *Bell Choir Director*

Rachele Gilmore, *Director of Community Life* ❖ Ben Andrews, *Director of Christian Formation*

Barbara Vanderkraats, *Pastoral Care Coordinator*

Jamie Russell, *Director of Children's Ministries*

Judy Lozier, *Nursery Director* ❖ Sofia Martin, *Nursery Support*

Delaney Christel, Josephine DeCaire, Quiara Smith, *Sunday School Teachers*

Julie Reeder, *Office Coordinator* ❖ Dinyar Vania, *Facilities Manager*

Kelley Norton, *Administrative Assistant* ❖ Anthony M. Condoluci-Smith, *Financial Associate*

Charlie Hannagan, *Technology Support*

A. Leonhard, S. Armstrong, K. Barton, A. Bloom, D. Howarth, J. Schubel, P. Worrell, *Livestream Production*

Nancy James, *Clerk of Session* ❖ Kathy Ciabattoni, *Deacon Moderator*

Bill Ciabattoni, *Belong Chair* ❖ Darlyn Green-Kocher, *Nurture Chair*

Linda Reisor, *Reach Chair* ❖ Lois Galinat, *Rejoice Chair*

Brandon Wallace, *Finance Chair* ❖ John Gast, *Personnel Chair*

Mark Cozine, *Home Chair* ❖ Scott McHenry, *Administration Chair*

Andrew Bloom, *Community Partners* ❖ Marcia Kelly, *Memory Garden Chair*

** For a complete list of all Session Ruling Elders and Board of Deacons members, please refer to <https://www.rccpc.org>. **

A NOTE ON THE LOGO

Our church has "**roots**" in the community that date back to 1722. We have been a good neighbor when we were surrounded by farmland up until now when we are surrounded by the suburbs. Our history helps us remember a time when people helped one another out because that was the right thing to do. We hope to be a sign that this kind of community can still exist. We also believe that, in order for that community to exist, we need to stay "rooted" in the Good News that God has chosen to love us - not because of who we are, but because of who God is. We call that grace.

That is where the "**rays**" come in. We hope to extend our love, and the love we know from the graciousness of God, in many ways today. This means engaging in friendships with those that Jesus would have made friends with - those that feel isolated for any number of reasons. We know we will never be perfect at that, but we will try! We are especially aware that churches have long held back from friendship with others based on age, economics, sexuality, race, disability, and the list goes on. We seek to be something different than that. There are so many stories about how Jesus entered into life-affirming friendships with those that others wouldn't. We seek to be like Jesus.



Right there, in the center of it all, is the **cross**. For us, the cross is a "Tree of Life." It represents how God broke into this world to establish a new way of being alive. It symbolizes how God calls us to love with freedom, with recklessness even, if it means connecting the world to the wonder of God's transformative presence.

10 Sing Glory to the Name of God

(Psalm 29)

Unison

1 Sing glo - ry to the name of God, whose ho - ly splen - dor shines a -
 2 The name of God is full of might: re - sound - ing thun - der, flash - ing
 3 The name of God is wild and free, a - whirl in ho - ly mys - ter -
 4 May God for - ev - er be our peace; may hymns of glo - ry nev - er

Harmony *Unison*

broad. light. y. cease: Al - le - lu - ia, al - le - lu - ia! En - throned a - bove the The wil - der - ness can - A se - cret wrapped in Let all the faith - ful

crash - ing waves, the God of grace and glo - ry saves.
 not con - tain the ech - oes of the great re - frain:
 smoke and fire, still chant - ed by the tem - ple choir:
 peo - ple come; sing praise to God, the Three - in - One:

This sweeping paraphrase of Psalm 29 conveys a sense of the Jewish reverence for the sheer power of God's name, regarded as too holy for mortal tongues to pronounce. In keeping with its appointment for Trinity Sunday, the final stanza gives the psalm a Christian interpretation.

Harmony

Al - le - lu - ia, al - le - lu - ia! Al - le - lu - ia,

This musical system is for a harmony part. It consists of two staves, treble and bass, in the key of D major (two sharps). The melody is written in the treble staff, featuring a series of eighth and quarter notes. The bass staff provides harmonic support with chords and single notes. The lyrics 'Al - le - lu - ia, al - le - lu - ia! Al - le - lu - ia,' are written below the staves.

Unison

al - le - lu - ia, al - le - lu - ia!

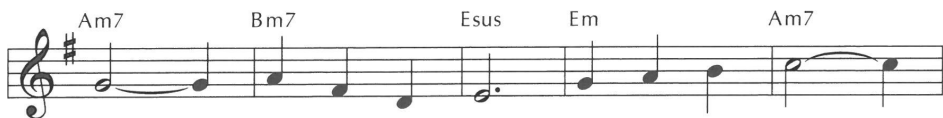
This musical system is for a unison part. It consists of two staves, treble and bass, in the key of D major. The melody is written in the treble staff, and the bass staff provides harmonic support. The lyrics 'al - le - lu - ia, al - le - lu - ia!' are written below the staves.

Longing for Light, We Wait in Darkness 314

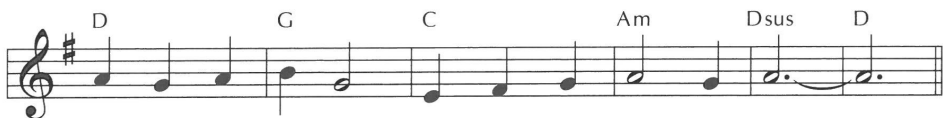
Christ, Be Our Light



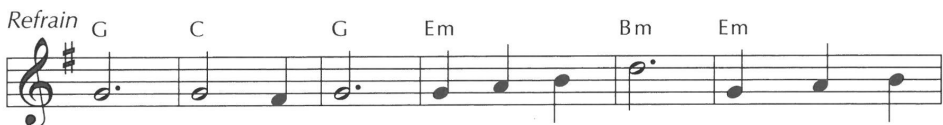
1 Long-ing for light, we wait in dark-ness. Long-ing for
 2 Long-ing for peace, our world is trou-bled. Long-ing for
 3 Long-ing for food, man - y are hun - gry. Long-ing for
 4 Long-ing for shel - ter, man - y are home-less. Long-ing for
 5 Man - y the gifts, man - y the peo - ple, man - y the



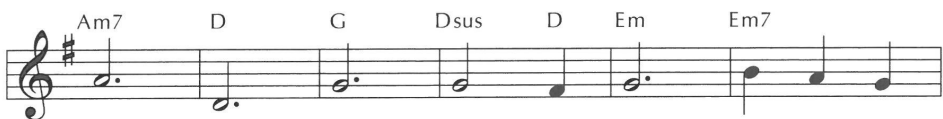
truth, we turn to you. Make us your own,
 hope, man - y de - spair. Your word a - lone
 wa - ter, man - y still thirst. Make us your bread,
 warmth, man - y are cold. Make us your build - ing,
 hearts that yearn to be - long. Let us be ser - vants



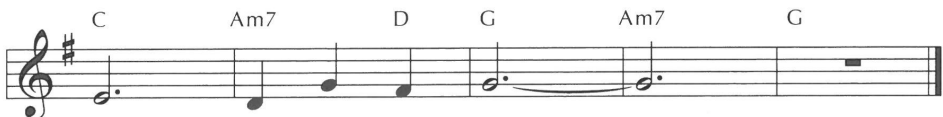
your ho - ly peo - ple, light for the world to see.
 has power to save us. Make us your liv - ing voice.
 bro - ken for oth - ers, shared un - til all are fed.
 shel - ter - ing oth - ers, walls made of liv - ing stone.
 to one an - oth - er, mak - ing your king - dom come.



Christ, be our light! Shine in our hearts. Shine through the



dark - ness. Christ, be our light! Shine in your



church gath - ered to - day.

By blending biblical images and current vignettes in the present tense, this hymn connects Christ's promise that he is the Light of the world (John 8:12, 9:5) and his charge to his followers to be the light of the world (Matthew 5:14). This is part of the church's servant calling.

Refrain
Descant

Lift High the Cross

826

Lift high the cross, the love of Christ pro - claim

Lift high the cross, the love of Christ pro - claim

till all the world a - dore his sa - cred name. *Fine*

till all the world a - dore his sa - cred name.

The first system of the hymn is written in 4/4 time. It consists of two staves. The top staff is a treble clef with a key signature of one sharp (F#). The bottom staff is a treble clef with a key signature of one sharp (F#). The melody is simple and hymn-like, with lyrics written below the notes. The first line of the melody is 'Lift high the cross, the love of Christ pro - claim'. The second line of the melody is 'Lift high the cross, the love of Christ pro - claim'. The third line of the melody is 'till all the world a - dore his sa - cred name.' and is marked 'Fine'. The fourth line of the melody is 'till all the world a - dore his sa - cred name.'.

1 Come, Chris - tians, fol - low where our Sav - ior trod,
2 All new - born ser - vants of the Cru - ci - fied
3 O Lord, once lift - ed on the glo - rious tree,
4 So shall our song of tri - umph ev - er be:

The second system of the hymn is written in 4/4 time. It consists of two staves. The top staff is a treble clef with a key signature of one sharp (F#). The bottom staff is a bass clef with a key signature of one sharp (F#). The melody is simple and hymn-like, with lyrics written below the notes. The first line of the melody is '1 Come, Chris - tians, fol - low where our Sav - ior trod,'. The second line of the melody is '2 All new - born ser - vants of the Cru - ci - fied'. The third line of the melody is '3 O Lord, once lift - ed on the glo - rious tree,'. The fourth line of the melody is '4 So shall our song of tri - umph ev - er be:'.

the Lamb vic - to - rious, Christ, the Son of God.
bear on their brow the seal of Christ who died.
your death has brought us life e - ter - nal - ly.
praise to the Cru - ci - fied for vic - to - ry.

to Refrain

The third system of the hymn is written in 4/4 time. It consists of two staves. The top staff is a treble clef with a key signature of one sharp (F#). The bottom staff is a bass clef with a key signature of one sharp (F#). The melody is simple and hymn-like, with lyrics written below the notes. The first line of the melody is 'the Lamb vic - to - rious, Christ, the Son of God.'. The second line of the melody is 'bear on their brow the seal of Christ who died.'. The third line of the melody is 'your death has brought us life e - ter - nal - ly.'. The fourth line of the melody is 'praise to the Cru - ci - fied for vic - to - ry.'. The system is marked 'to Refrain'.

This majestic hymn celebrates the paradox that for Christians a means of painful death has been transformed into a symbol of renewed life; a sign of defeat has become an emblem of victory. With the cross traced on our foreheads at Baptism we are marked as Christ's own forever.