



Red Clay Creek

PRESBYTERIAN CHURCH

500 McKennans Church Road
Wilmington DE 19808
(302) 998-0434 / rccpc.org

SERVICE FOR THE LORD'S DAY / SUNDAY, JUNE 21, 2026 / 10 AM

Rooted in Love, Lighting the Way
Welcome to worship, welcome to Red Clay, welcome home!

We're glad you're here. If needed, a family area with CCTV is in the narthex near the front doors, and our nursery is open for young children. Restrooms are available by exiting out the side door near the pulpit and turning left. After worship, join us for Coffee Hour in Founders Hall by the main parking lot. Please silence your cell phone as we enter into worship.

GATHER

LIGHTING OF THE PEACE CANDLE

(Universal Prayer for Peace from the Iona Community)

Lead us from death to life, from falsehood to truth. Lead us from despair to hope, from fear to trust. Lead us from hate to love, from war to peace. Let peace fill our lives, our world, our universe. Peace, peace, peace.

PRELUDE

CHIMING OF THE HOUR

WELCOME AND ANNOUNCEMENTS

One: The Lord be with you.
Many: **And also with you.**



Sign-Up!

*CALL TO WORSHIP

One: In Philippi, beside the river...

Many: God made a way.

One: In Athens, among the philosophers...

Many: God made a way.

One: In Corinth, amid the noise and division...

Many: God made a way.

One: In Ephesus, among idols and empires...

Many: God made a way.

One: And here, in our own lives and in our own time...

Many: Christ is still making a way. Let us worship God.

*HYMN 611

Joyful, Joyful, We Adore Thee

*PRAYER OF CONFESSION

One: Let us confess our sins before God and one another.

Many: Gracious God, you call us into the way of life, yet we so often follow easier paths. At the place where fear meets courage, we choose fear. Where anger meets mercy, we choose anger. Where comfort meets compassion, we choose ourselves.

We confess that we trust what is familiar more than what is faithful. We listen more closely to the voices of success, certainty, and self-interest than to the voice of Christ. Yet you continue to meet people on the road. You continue to open paths where none seem possible. Forgive us, redirect us, and lead us again in the way of Jesus.

(a time of silence)

*ASSURANCE OF PARDON

One: Hear the good news! In Jesus Christ, our sins are forgiven, grace is given, and a new path is opened before us.

Many: Thanks be to God. Amen.

*SUNG RESPONSE

Waymaker

One: *You are here, moving in our midst, we worship You, we worship You
You are here, working in this place, we worship You, we worship You*

Many: *You are Waymaker, miracle worker
Promise keeper, light in the darkness,
My God, that is who You are
You are Waymaker, miracle worker
Promise keeper, light in the darkness
My God, that is who You are*

***PASSING OF THE PEACE**

Please greet those around you, wishing them “peace” or “the peace of Christ.”

CHILDREN’S MOMENT & THE LORD’S PRAYER

At the conclusion, we look forward to welcoming all children through 8th grade to the nursery or their Sunday school classes, as the congregation prepares to hear the sermon.

SUNG RESPONSE

Waymaker

(see above)

PRAYER

SCRIPTURE LESSONS Acts 18:1-3; 1 Corinthians 13:1-8a, 13

SERMON

WAYMAKER (Corinth): No Blood, No Foul

Rev. Dr. Phillips

_____ is patient, _____ is kind. _____ does not envy, _____ does not boast, _____ is not proud. _____ does not dishonor others, _____ is not self-seeking, _____ is not easily angered, _____ keeps no record of wrongs. _____ does not delight in evil but rejoices with the truth. _____ always protects, always trusts, always hopes, always perseveres.

HYMN 518

Your Only Son

CALL TO THE OFFERING

We invite you to make an online donation or by placing a check or cash in the collection plate. Envelopes are available in the pews for specified giving. The gray envelopes are for our Roots & Rays Fund, which goes to creative outreach projects in the community.



*SUNG RESPONSE

Lift High the Cross

Many: *Lift high the cross, the love of Christ proclaim
till all the world adore his sacred name.*

Choir: *Come, Christians, follow where our Savior trod,
the Lamb victorious, Christ, the Son of God.*

Many: *Lift high the cross, the love of Christ proclaim
till all the world adore his sacred name.*

*PRAYER OF DEDICATION

SEND

SACRAMENT OF COMMUNION

GRACIOUS INVITATION TO THE TABLE

THE GREAT THANKSGIVING

One: The Lord be with you.

Many: And also with you.

One: Lift up your hearts.

Many: We lift them up to the Lord.

One: Let us give thanks to the Lord our God.

Many: It is right to give our thanks and praise.

WORDS OF INSTITUTION

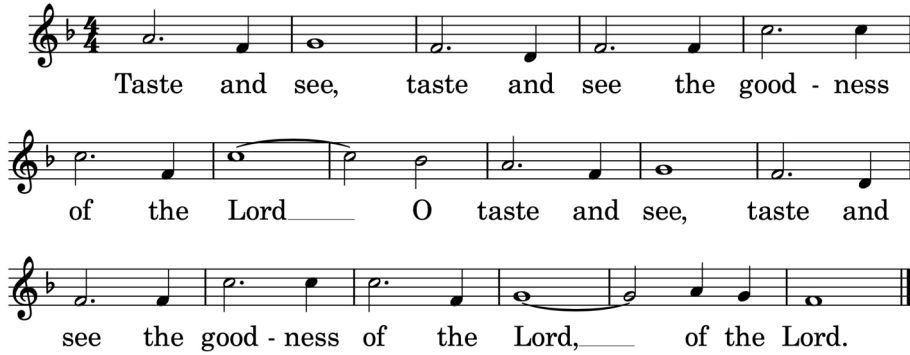
COMMUNION OF GOD'S PEOPLE

*All are welcome to the table! This morning the congregation is served in procession. Those seated
in the pews at the front of the sanctuary begin the procession when directed by ushers.*

For those unable to process forward, stay seated and a server will bring the sacrament to you.

*All bread is gluten-free; please take a piece from the offered tray. Empty glasses are placed
in the bowls provided near the communion servers.*

The congregation is invited to join in singing "Taste and See" as individuals process forward.



Taste and see, taste and see the good - ness
of the Lord, O taste and see, taste and
see the good - ness of the Lord, of the Lord.

PRAYER AFTER COMMUNION

One: The angels said it to startled shepherds and Jesus said it to frightened followers. And now these words which come from heaven are shared to make us whole and make us one: Peace be with you.

Many: **And also with you. Amen.**

*HYMN 837

What a Fellowship, What a Joy Divine

*BENEDICTION

POSTLUDE



Thanks to today's worship participants:

Red Clay Collective & Chancel Choir, *Music Ministry*
Rick Marsey, *Usher Captain*
Shirley Tielleman, *Greeter*

The flowers today are given in loving memory of the birthday of
Mary Honeychurch Jeffers, from the Jeffers and Norris families.



Join us for refreshments & fellowship in Founders Hall following
the postlude. Visit the ice cream truck outside for an opportunity to purchase a
delicious summer treat! And, all kids (from nursery and up) and their families are
invited to join us at the playground after the service for outdoor fun
and fellowship time together.

Through a series of in-person messages, devotionals, and worship opportunities,
we hope to keep you connected to—and nurtured by—the Red Clay Creek
Presbyterian Church community. Make sure you're signed up for our Thursday
eNews, Facebook, and Instagram accounts. Visit www.rccpc.org.



WELCOME TO RED CLAY

For LARGE print bulletins or children's bulletins, please ask an Usher.
Restrooms are available. Just ask!

Welcome to worship, welcome to Red Clay, welcome home! Rooted in God's abiding love for all, our church is lighting the way for friendship, compassion, and service. All are welcome, for Jesus gathers us together even as we divide ourselves by politics, denomination, or whatever labels the world puts on us. Please join us for coffee hour in Founder's Hall after service. We hope you will worship with us again soon! If you are interested in deepening your participation, or if you just love Red Clay, it's time to think about membership! Contact Elder Karen Vordemberge at kvordemberge@gmail.com.

Here at Red Clay, we have numerous groups that are open and that welcome newcomers, including, e.g., Quilters, Crafters, "Friends and Fellowship" luncheon for seniors, Bible study, ROMEOS ("Retired Old Men Eating Out"), Centering Prayer and "The Arcaders" social group for GenX and Millennials. Details can be found at www.rccpc.org!

Children: Nursery care is available from 9:45AM through the conclusion of worship in Room 305 (just down the hallway from the sanctuary). After the Children's Moment, Pre-K - Kindergarteners will adjourn to Room 303, Grades 1-3 will adjourn to Room 206, and Grades 4-8 will adjourn to Room 202/204.



UPCOMING EVENT SPOTLIGHT

Scrapbookopita! Sunday, June 28th following worship

Join us in Fellowship Hall next Sunday following worship as we look back on our journey through Greece and "The Steps of Paul" adventure, sharing photos and stories along with Greek-inspired delights such as: spanakopita, tzatziki with pita chips and veggies, and homemade Greek cookies such as Kourabiedes and Koulourakia. All are welcome!

RED CLAY CREEK PRESBYTERIAN — MINISTERS, STAFF & CHAIRS

Rev. Dr. Nathaniel D. Phillips, *Senior Pastor/Head of Staff*
Rev. Emily Schwenker

Jeffrey Miller, *Director of Music*
Deena Andrews, *Director of Children's Choir*
Lisa Nichols, *Bell Choir Director*

Rachele Gilmore, *Director of Community Life* ❖ Ben Andrews, *Director of Christian Formation*
Barbara Vanderkraats, *Pastoral Care Coordinator*
Jamie Russell, *Director of Children's Ministries*
Judy Lozier, *Nursery Director* ❖ Sofia Martin, *Nursery Support*
Delaney Christel, Josephine DeCaire, Quiara Smith, *Sunday School Teachers*

Julie Reeder, *Office Coordinator* ❖ Dinyar Vania, *Facilities Manager*
Kelley Norton, *Administrative Assistant* ❖ Anthony M. Condoluci-Smith, *Financial Associate*

Charlie Hannagan, *Technology Support*
A. Leonhard, S. Armstrong, K. Barton, A. Bloom, D. Howarth, J. Schubel, P. Worrell, *Livestream Production*

Nancy James, *Clerk of Session* ❖ Kathy Ciabattoni, *Deacon Moderator*
Bill Ciabattoni, *Belong Chair* ❖ Darlyn Green-Kocher, *Nurture Chair*
Linda Reisor, *Reach Chair* ❖ Lois Galinat, *Rejoice Chair*
Brandon Wallace, *Finance Chair* ❖ Christine Fischer, *Personnel Chair*
Mark Cozine, *Home Chair* ❖ John Gast, *Administration Chair*
Andrew Bloom, *Community Partners* ❖ Marcia Kelly, *Memory Garden Chair*

* For a complete list of all Session Ruling Elders and Board of Deacons members, please refer to <https://www.rccpc.org>.*

A NOTE ON THE LOGO

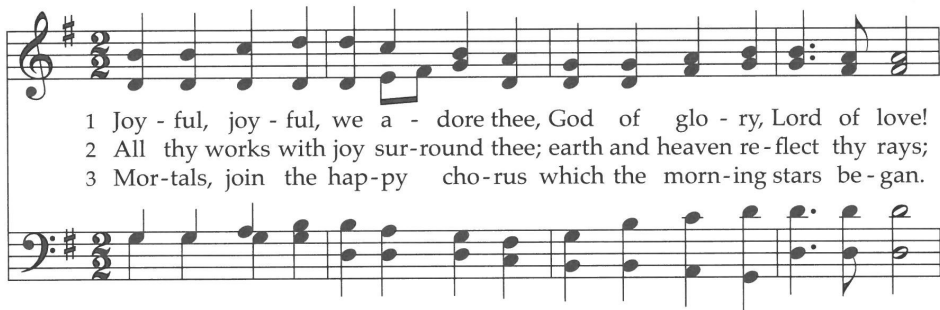
Our church has "roots" in the community that date back to 1722. We have been a good neighbor when we were surrounded by farmland up until now when we are surrounded by the suburbs. Our history helps us remember a time when people helped one another out because that was the right thing to do. We hope to be a sign that this kind of community can still exist. We also believe that, in order for that community to exist, we need to stay "rooted" in the Good News that God has chosen to love us - not because of who we are, but because of who God is. We call that grace.

That is where the "rays" come in. We hope to extend our love, and the love we know from the graciousness of God, in many ways today. This means engaging in friendships with those that Jesus would have made friends with - those that feel isolated for any number of reasons. We know we will never be perfect at that, but we will try! We are especially aware that churches have long held back from friendship with others based on age, economics, sexuality, race, disability, and the list goes on. We seek to be something different than that. There are so many stories about how Jesus entered into life-affirming friendships with those that others wouldn't. We seek to be like Jesus.

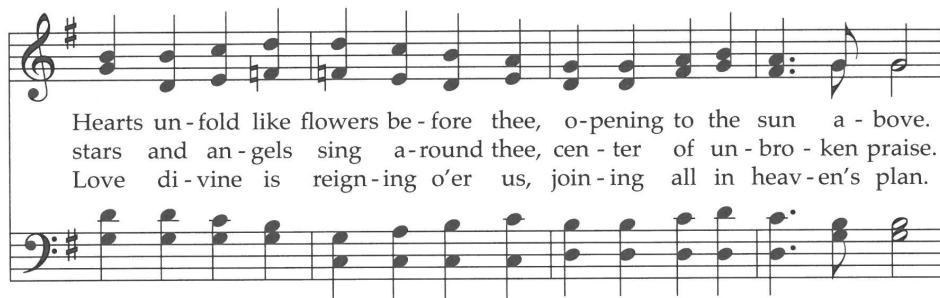
Right there, in the center of it all, is the **cross**. For us, the cross is a "Tree of Life." It represents how God broke into this world to establish a new way of being alive. It symbolizes how God calls us to love with freedom, with recklessness even, if it means connecting the world to the wonder of God's transformative presence.



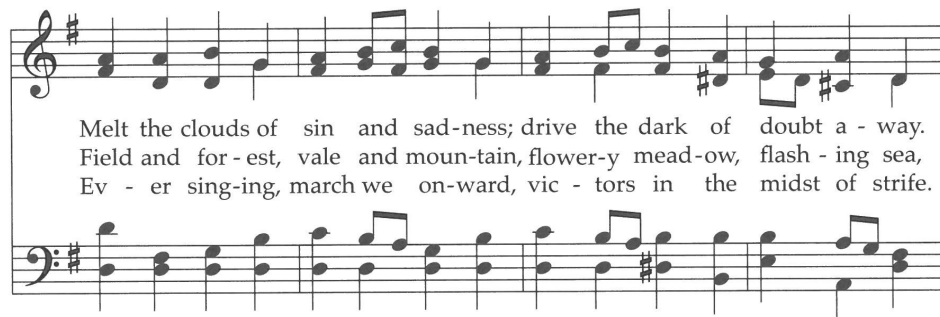
611 Joyful, Joyful, We Adore Thee



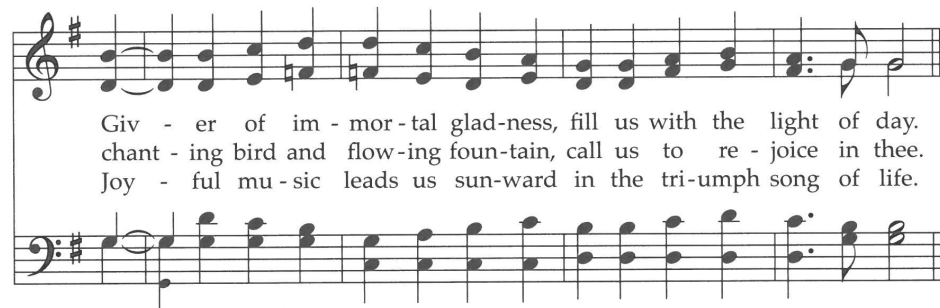
1 Joy - ful, joy - ful, we a - dore thee, God of glo - ry, Lord of love!
2 All thy works with joy sur-round thee; earth and heaven re-lect thy rays;
3 Mor-tals, join the hap-py cho-rus which the morn-ing stars be-gan.



Hearts un-fold like flowers be-fore thee, o-pening to the sun a-bove.
stars and an-gels sing a-round thee, cen-ter of un-bro-ken praise.
Love di-vine is reign-ing o'er us, join-ing all in heav-en's plan.



Melt the clouds of sin and sad-ness; drive the dark of doubt a-way.
Field and for-est, vale and moun-tain, flower-y mead-ow, flash-ing sea,
Ev-er sing-ing, march we on-ward, vic-tors in the midst of strife.



Giv-er of im-mor-tal glad-ness, fill us with the light of day.
chant-ing bird and flow-ing foun-tain, call us to re-joice in thee.
Joy-ful mu-sic leads us sun-ward in the tri-umph song of life.

This well-known melody was created to provide a choral setting for J. C. F. von Schiller's poem, "An die Freude" (To Joy), as the final movement of the composer's *Ninth Symphony*. The author, a prominent Presbyterian pastor and author, wrote the words with this tune in mind.

Your Only Son

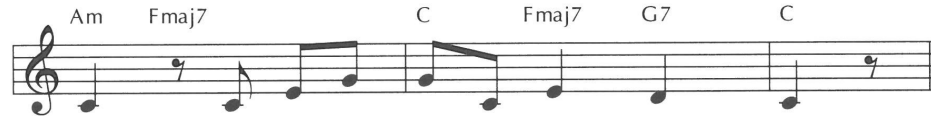
Lamb of God



1 Your on - ly Son, no sin to hide, but you have
 2 Your gift of love, we cru - ci - fied; we laughed and
 3 I was so lost, I should have died, but you have



sent him from your side to walk up - on this guilt - y
 scorned him as he died; the hum - ble King we named a
 brought me to your side to be led by your staff and



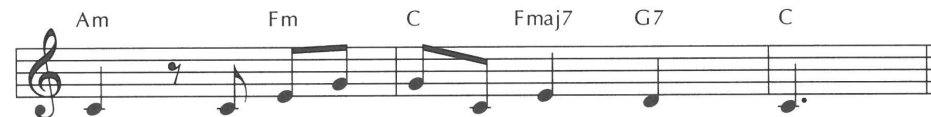
sod, and to be - come the Lamb of God.
 fraud and sac - ri - ficed the Lamb of God.
 rod, and to be called a lamb of God.

Refrain

O Lamb of God, sweet Lamb of God, I love the



ho - ly Lamb of God! O wash me in his pre - cious



blood, my Je - sus Christ, the Lamb of God.

What a Fellowship, What a Joy Divine 837

Leaning on the Everlasting Arms

1 What a fel-low-ship, what a joy di-vine, lean-ing on the ev-er-
2 O how sweet to walk in this pil-grim way, lean-ing on the ev-er-
3 What have I to dread, what have I to fear, lean-ing on the ev-er-

last-ing arms; what a bless-ed-ness, what a peace is mine,
last-ing arms; O how bright the path grows from day to day,
last-ing arms? I have bless-ed peace with my Lord so near,

Refrain
lean-ing on the ev-er-last-ing arms. Lean-ing, Lean-ing on Je-sus,

lean-ing, safe and se-cure from all a-larms; lean-ing on
lean-ing on Je-sus,

ing, lean-ing, lean-ing on the ev-er-last-ing arms.
Je-sus, lean-ing on Je-sus,

The composer of the tune (and creator of the refrain) asked the author of the stanzas to write a hymn based on the latter part of Deuteronomy 33:27 (as worded in the King James Version): "Underneath are the everlasting arms." Their joint effort has proved very popular.