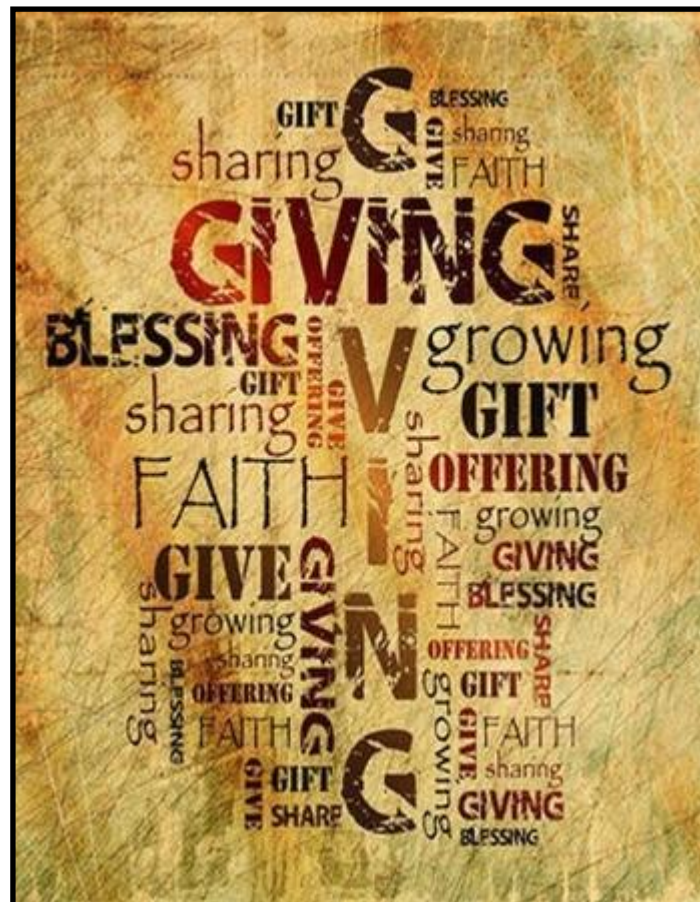

GOOD SHEPHERD LUTHERAN CHURCH



Opportunities for
Designated Giving



Fiscal Year 2024 (spring catalog)

Dear Brothers and Sisters in Christ,

Good Shepherd's "Above and Beyond" giving program started in 2017 to enhance and grow our ministry programs further than our general budget could accommodate. We thank God for everyone who has generously responded to the projects within the program year in and year out.

Gifts to the sustained Above and Beyond program are just one way for us to acknowledge our willingness to hear God's call to do even more than we can imagine and trust in Him to provide. These gifts may be given in celebration of a life milestone; in honor or memory of a person; to advance an area of ministry that has touched your life; or just to respond to an area of need identified by Good Shepherd's ministry teams.

God calls us to generous stewardship and the sacrificial giving of our time and our treasure. In this Fiscal Year 2024 (spring catalog) you will find items that are currently funded, items with remaining balances noted, and one new item (Campus Ministry). We thank God for your generosity, in advance.



Sincerely, in Christ,
Jotham Johann
Senior Pastor

ABOVE & BEYOND SPRING UPDATE

This FY 2024 spring catalog of Above and Beyond (A&B) is an update to the winter catalog. The A&B catalog identifies requested projects and programs that ministry teams have identified to expand our ability to meet special needs. Thanks to everyone who has contributed to the current A&B program. This year's "wish list" includes 28 items totaling \$300,450 in donation requests. As of April 24, donations have fully funded 9 of the 28 items and have also partially funded a number of items. This update will show which items are fully funded, as well as those with remaining balances. Your generous funding for these programs allowed GSLC to continue support for local needs and global programs.

God's blessings to you all.

About the program



Good Shepherd's annual budget covers general operating expenses to support the ministries and programs of the church. It is funded by unrestricted, general funds—the generous, regular offerings of our members. To be fiscally responsible, our ministry plans are prioritized so that the general operating budget is balanced against projected offerings.

Gifts to the Above and Beyond (A&B) effort help enhance and grow our ministry programs further than our general budget can accommodate.

Above and Beyond giving falls into two categories:

1. **Immediate opportunities** are those that do not extend past the current fiscal year. Ministry teams will make every effort to spend all available gifts during the current fiscal year. Once the desired Above and Beyond amount is reached, no more gifts will be accepted for that opportunity during the current fiscal year. These opportunities will be reviewed and updated each year. Examples of this type of opportunity would be a gift to support Vacation Bible School, the Bus to Sight & Sound presentation, and support for the choir.

2. **Long-term opportunities** are those associated with special projects. Because of their significance and magnitude, these opportunities are likely to span a number of years. Once sufficient funds have been received for the project, they will be spent and the fund will be closed. Examples of this type of opportunity would be a gift to support the building contingency fund and the Heating, Ventilation, and Air Conditioning (HVAC) and Roof repair projects.

Donors can specify which opportunities they wish to support, whether long-term or immediate. If a donor does not specify an opportunity, the Senior Pastor will determine where to allocate the gift. In the event GSLC does not have a Senior Pastor on staff, the determination will be made by the serving Pastor or by the Board.

To receive a tax deduction for federal tax purposes, a donor must release control over the gift to the church or designate it to a fund established in advance by the church. General offerings area considered Unrestricted Funds, and GSLC makes the sole determination on how to expend such funds. The funds supported by Above and Beyond gifts will be considered Temporary Restricted Funds. Such funds may only be used for the defined purpose unless released by the donor.

FAQs

What is a “designated gift”? A designated gift is a donation that is to be used for a particular purpose.

May I designate my gift to an opportunity that is not listed here? Maybe. When a designated gift is received, it goes into a specific, designated fund to support a particular opportunity or project. The fund has to be in place before you can donate to it. (This policy is in line with IRS regulations.) These designated, or restricted, funds are created by the Board of Servant Leaders. So if there is a project or opportunity you’d like to support and you don’t see it listed here, discuss it with the pastor or the appropriate ministry team leader. If they agree that the opportunity is aligned with GSLC’s mission and we have the resources to undertake it, a new designated fund will be established to receive the gift. If you make a designated gift and there is no fund for it, we will have to return your gift.

May I direct my gift to more than one opportunity? Yes. GSLC will allocate your gift according to your direction. Contact Business Manager, Georgia Thorstenson, georgia@gslcva.org, for instructions on how to make your wishes known.

May I designate my gift for a GSLC staff individual? No. IRS regulations state that such gifts are not tax deductible to the donor and are taxable income to the recipient.

What happens to restricted, or designated, funds at the end of the year if they have not been spent? It depends. Some funds are “annual” and some are “multi-year.” Donations to multi-year funds will be accumulated and rolled over until the purpose of the fund has been satisfied. Donations to annual funds are meant to be spent by the end of the fiscal year in which the donation is made, and GSLC will do its best to conduct the activities that the funds are intended to support. If an “annual” Above and Beyond program is continued in the next fiscal year, unused Above and Beyond balances will be rolled over. If the program is not continued or if it is moved to the general budget, donors will be contacted for permission to redirect the gifts or have them returned.

When and how often can I make a donation? You can make a one-time donation, or you can give periodically at any time during the fiscal year (September 1 through August 31). Note, however, that gifts received toward the end of the fiscal year may not be spent before the new fiscal year begins.

How can I make a donation? You can submit a check, use an electronic funds transfer, or contribute with other types of financial instruments. Contact the Business Manager, Georgia Thorstenson, georgia@gslcva.org.

Will I receive a statement for my designated gift? Yes. Both your regular, general offering and designated gift contributions will be reported on your statement of giving, which is made available each January.

Giving opportunities



COMMUNITY SERVICE

Weekend Grocery Packs

Support children at Dranesville Elementary with weekend bags of food for the 2023-2024 school year. One hundred bags are packed monthly during the school year, and the school distributes the bags to children who are living at or below the poverty level.

Weekend Grocery Packs: ~~\$5,000~~ \$1,047.40 remaining

South Lakes High School Food Pantry

The SLHS Food Pantry at Good Shepherd helps with the family distribution nearly every week of the year with a myriad of volunteers. Help us with operational costs of the pantry including carts, bins, and other needs as necessary.

SLHS Food Pantry: ~~\$1,500~~ \$959 remaining

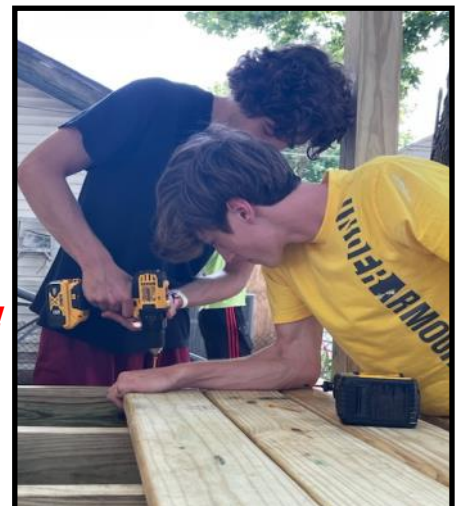


LEARNING AND DISCIPLESHIP

Workcamp 2024: Elizabeth City, NC

By contributing to the Workcamp 2024, you can help more high school youth participate in summer Workcamp, an annual mission trip that is a highlight for many of our teens. This fund holds down costs for the teens and adult leadership and provides essential supplies.

Workcamp 2024: ~~\$4,000~~ Fully Funded!



LEARNING AND DISCIPLESHIP (continued)

Senior Youth Ministry

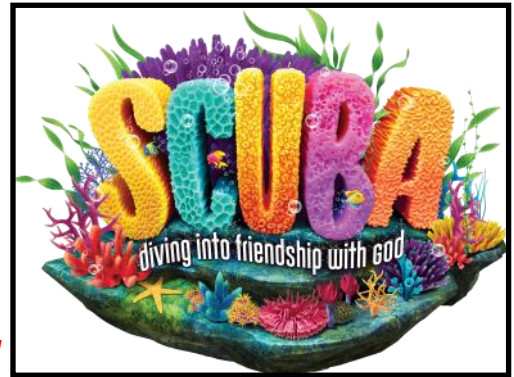
Help put more ministry resources into the hands of our Senior Youth and support more ministry opportunities for them.

Senior Youth: \$1,500 Fully Funded!

Vacation Bible School

VBS is one of Good Shepherd's biggest outreach efforts to our neighbors, and we hope to make this year's "Scuba VBS" a huge success. Each year, we decorate – and transform! – the church campus to reflect the VBS theme and make the week truly memorable for all participants. Your gift will help offset the cost of supplies, course materials, and decorations.

Vacation Bible School: \$4,000 \$2,650 remaining



LIFE AT GOOD SHEPHERD

Staff and Core Ministry Celebrations

Treat the Staff and Core ministry leaders to a few lunches or team building events during the year.

Staff and Core Ministry Celebrations: \$1,000 Fully Funded!

Celebrations

Support congregational celebrations, volunteer recognition events, and new member welcome receptions.

Celebrations: \$2,500 \$1,300 remaining

Bus to Sight & Sound presentation

The [Sight & Sound Theatres](#) in Lancaster, Pennsylvania, has been presenting powerful productions of Bible stories for more than 50 years. Good Shepherd would like to organize a trip to this year's production of "Daniel" – and pay for the transportation (tickets to be purchased separately by participants). Your contribution to this fund will help provide bus transportation to and from Lancaster for this event.

Congregational Events: \$2,500



LIFE AT GOOD SHEPHERD (continued)

Direct Mailings

Many people in the local area are looking for a church, but unaware of Good Shepherd Lutheran Church. This request is for a campaign to mail postcards to targeted neighbors of Good Shepherd, inviting them to visit us. Included in the postcard would be a link to our website, service offerings, the virtual tour, and virtual Sunday visit.

Direct Mailings: \$750 Fully Funded!



Campus Ministry—NEW

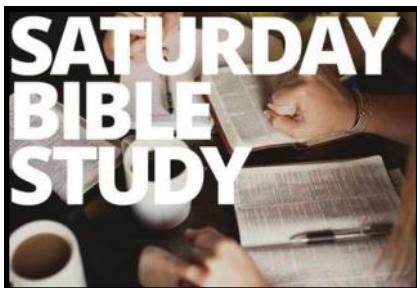
Good Shepherd is now currently pursuing an active role in the LCMS campus ministry at George Mason University. Initial funding is needed to host student meetings and provide opportunities for developing student relationships on campus. Additionally, we will be initiating a campus ministry on the Northern Virginia Community College – Loudoun Campus, as well.

Campus Ministry: \$3,000

CONGREGATIONAL CARE AND NURTURE

Expanded Congregational Care and Nurture Programs

Additional funds are requested to cover an expanded program of classes and seminars. Examples of such offerings



include dementia training, First Aid and CPR, and one-day Bible studies. In order to offer such programs at reduced, or no cost, donations would be needed to pay for instructor fees, lunches, and reduced (or free) registration fees. The purpose in doing so would aid

in enhancing attendance within the congregation and to the community as a whole.

Expanded Congregational Care and Nurture Programs: \$6,000 \$5,000 remaining



MISSIONS

Iglesia Luterana Principe de Paz

Help us increase our giving to this Lutheran Church in Puerto Rico as they work toward furthering missionary teachings and outreach for the local community in Mayaguez, Puerto Rico. Principe de Paz leads educational outreach at LCMS mercy centers in Puerto Rico.

Iglesia Luterana Principe de Paz: \$2,500

Lutheran World Relief

Lutheran World Relief (LWR) is an international aid and development organization that tackles global poverty by helping people adapt to the challenges that threaten their livelihoods and well-being and provides aid in emergencies and helps families restore their lives. LWR provides humanitarian aid in war torn countries and operates in East and West Africa, Latin America, Asia and the Middle East, helping some of the world's poorest communities build the resilience they need to thrive.



Lutheran World Relief: ~~\$5,000~~ \$2,905.63 remaining

The Seed Company

Everyone deserves to have Scripture in the language they understand best. Right now about 125 million people do not have a single verse. The Seed company is working to accelerate the pace of Bible translation among remaining Bibleless people groups. They work with locally led translation teams, church leaders and like-minded organizations - more than 1,200 global partners in all. The goal is to see God's Word transform lives in every language, in this generation.

The Seed Company: \$3,000

The Mustard Seed House

The Mustard Seed House, located near Tenwek Mission Hospital in Kenya, provides Christian care for families who travel far from home for the medical needs of their children. They welcome sick and suffering children in Jesus' name. The vision for Mustard Seed House includes constructing a permanent facility that will serve as a beacon of hope and healing for countless families. This campaign "Room for More" is to raise money to construct the first building on the property.

The Mustard Seed House: ~~\$5,000~~ \$3,162.99 remaining

Fraher Family Support

Former GSLC members, Jacob and Lauren Fraher moved their family (to include their four children - Miriam, Micah, Layla, & Lorelei) from Virginia to Kenya in August 2023. These funds will be used to help sustain the Frahers as they serve the Lord in Kenya and oversee the effort for the new larger Mustard Seed House.

Fraher Family Support: ~~\$2,500~~ \$1,965 remaining

PROPERTIES AND FACILITIES

Heating, Ventilation, and Air Conditioning (HVAC)



The HVAC replacement approach will be to replace portions of the HVAC in phases, starting with those that are experiencing the most maintenance issues and other portions that would have the greatest impact on operations if they failed. Less critical elements of the system will be replaced in later phases of the upgrade. Phase 1 of the HVAC upgrade (i.e. replacing the boilers) was completed in 2023 at a cost of \$150,000 using money from the building

contingency fund. Phase 2 of the HVAC system, with a target date of Christmas December 2024, will start the process of replacing the elements of the cooling system that are nearing the end of their serviceable life. The majority of the cooling portion of the HVAC system uses a refrigerant that is no longer produced resulting in high maintenance costs whenever leaks occur or system components fail.

Phase 2 of the HVAC system upgrade: ~~\$200,000~~ \$197,000 remaining

Note: There will be further phases over the next decade. We currently estimate that the complete upgrade of cooling system will cost approximately \$1,000,000.

Conference Room Television

With the return to campus and increased activities, such as Bible studies and Life Groups, the addition of a 55-inch television, with wall mount and computer hookups, can allow for additional meetings and increase our virtual footprint to extend to the classroom. This television, with hookups, is intended to increase the utilization of conference room #202.

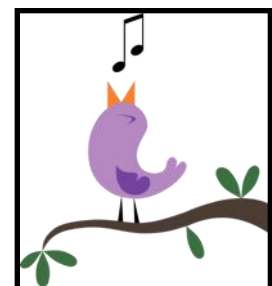


Television: ~~\$1,200~~ \$800 remaining

WORSHIP

Sanctuary Choir Support

Our Sanctuary Choir provides anthems and choral support for worship services throughout the year, and professional singers who join with our other singers are vital to these choral offerings. Your gift to this fund will ensure that these singers can continue to supplement our choir and be a part of our Music Ministry in many ways.



Section leaders: ~~\$13,000~~ \$1,750 remaining

WORSHIP (continued)

Special Music for Festivals

Brass ensembles and other instrumentalists add to the



celebration on Festival Sundays and other occasions. By supporting this fund, you can ensure this special music continues to be a part of our festive celebrations throughout the year, such as Easter, Pentecost, Reformation, and Christmas Eve.

Special music for festivals: \$10,000 \$4,725 remaining

Organ Repair Project

During recent routine maintenance of our pipe organ, an organ technician discovered issues with three sliders. (Sliders, when moved, allow air to go through a pipe. When sliders get stuck, they essentially close off pipes, and those pipes can't create any sound.) The organ technician was able to repair two sliders, but the third one is harder to access and will require a more substantial repair. The request represents our best estimate of the cost of the repair.



Organ repair project: ~~\$6,000~~ Fully Funded!

Replacing Hymnals

Over the past few years, a number of our hymnals have “gone walkabout.” While the Worship Team is thrilled that worshippers love the liturgy and hymns so much that they want to take home a copy of the Lutheran Service Book, we also need to ensure that those worshipping in the sanctuary have a hymnal at hand, should they need to use one. Purchasing 25 hymnals would allow us to replenish the pew racks and have a few extra on hand. Each hymnal (cost of book plus shipping) is \$32.

Hymnals: \$800 Fully Funded!

Choir Needs

The Sanctuary Choir uses black music folders to keep its music in order during worship services and concerts. Over the years, the choir's folders have worn out or have been “permanently borrowed,” and the choir needs to supplement the few folders that remain. The choir also has other needs that might seem minor but are vital to keeping the operations going, such as file folders (for storing music in cabinets) and other, similar supplies to keep us organized. Your donations to this fund will help keep the choir running smoothly.

Choir needs: ~~\$1,000~~ Fully Funded!

GOOD SHEPHERD LUTHERAN SCHOOL

Expanding Operations

Good Shepherd Lutheran Preschool is in need of assistance as we begin expanding our operating hours to full-day care with the inclusion of before care, traditional preschool and afternoon care. Many parents in our community are in great need of this service and we see it as a way to not only further our Christian mission to be witnesses for Christ but a way to serve our community. We haven't offered this expanded program previously at Good Shepherd. As with any new or expanded program there are initial expenses, increased staff requirements and the need to market and share our new program with the community. Would you consider supporting this mission in our initial phases of building and championing this effort?

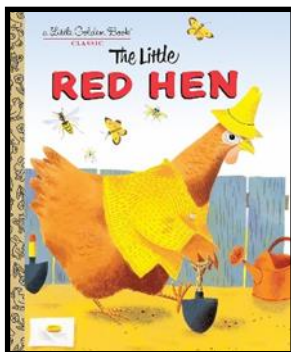


Expanding Operations: \$10,000 Fully Funded!

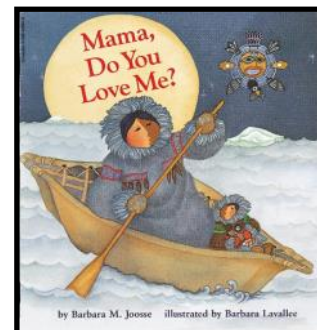
Big Books

Good Shepherd Lutheran Preschool is in need of some additional reading resources. Some of our big books have been loved so well and used for many years that the preschool needs to refresh several titles like:

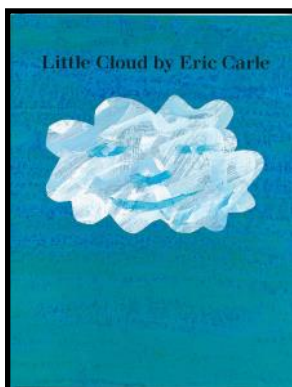
The Little Red Hen (Diane Muldrow)



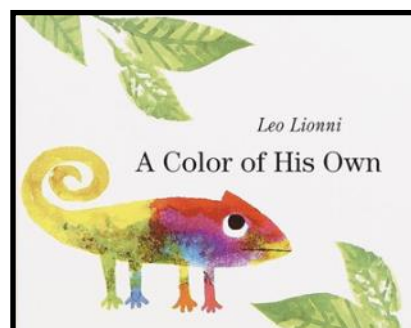
Mama Do You Love Me? (Barbara Joosse)



Little Cloud (Eric Carle)



A Color of His Own (Leo Lionni)



Big Books: \$200 Fully Funded!

AUDIOVISUAL UPGRADES

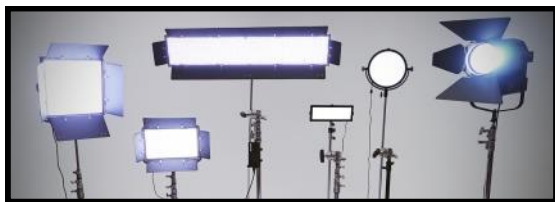
Fellowship Hall Robotic Camera System (Installed)

Help us increase the “production value” for our Praise Band services! Live-streamed Praise services in the fellowship hall could benefit greatly from an additional camera angle that can be placed in any number of locations for an unobstructed view of our musicians and pastors. Additionally, this camera system could also be available for use in virtual meetings, helping participants feel more welcomed and immersed in the environment.



Fellowship Hall Robotic Camera System (Installed): \$5,000

Replacement and Supplemental Lighting for the Fellowship Hall



Alongside the additional camera, refreshed lighting around the Fellowship Hall stage would bring the quality of live-streamed praise services in line with those in our beautiful sanctuary. Not all lighting is created equal when seen through a camera, so having

video-quality and color accurate lighting would vastly improve the visual elements of Praise services.

Replacement and Supplemental Lighting for the Fellowship Hall: \$1,500

Praise Band Stage Backdrop and Decorations

Help us beautify the Fellowship Hall stage. Darker colors create superior contrast and greater visibility of the band members and pastors, not only in person but also on livestream and recorded services. This upgrade will not only create a “warmer” look in the Fellowship Hall, but that look will translate exponentially to the live-streamed services and bring them closer to what is seen in the Sanctuary.



Praise Band Stage Backdrop and Decorations: \$1,000

About Good Shepherd



Our vision

We will be a congregation known for building up God's people through His Word for His world.

Worship

During worship, God comes to us through his gifts of Word and Sacrament. What a joy to respond with prayer and songs of praise. Our worship services give us opportunity to listen to God's word and meditate upon it, thus feeding our faith; and express our concerns for our friends, families, community, and the world through prayer.

Serve

We are called to actively share the Good News of Jesus Christ through word and deed. One way we share is by serving one another and our neighbors in our community and throughout the world. We list many Community Service Opportunities in our weekly bulletins, monthly newsletter, and online.

Grow

We are committed to spiritual growth through the weekly gathering for prayer, praise, and thanksgiving, and through lifelong learning. In addition to growing in knowledge, we want to grow in love and service to others within and beyond our church community.

Connect

As we grow in our love for Jesus and our neighbors, as we serve our neighbors near and far, we help and encourage one another, challenge one another, and share one another's joys and sorrows.

Opportunities to Give: Time and Talents

Most of the information in this catalog is about sharing our treasure. But God has given talents to share, and the choices we make about how we spend our time are part of stewardship as well.

One way we share is by serving. We are always looking for help with everything from answering phones, to stuffing bulletins, to assisting with the weekly service materials, and much more. If you are interested contact the church office and request the Time and Talent Survey. Fill it out and return it to the church office. Even if you've filled it out before, you might have new interests or other updates. Take a look at the form, and consider how you might share your time and your talents to serve at Good Shepherd and promote God's kingdom.

Above & Beyond donation form



Name _____

Email _____ Phone _____

I/We would like to donate to the following items from this Giving Opportunities catalog to sustain/expand Good Shepherd's ministry for Christ:

Item(s) (as described in the catalog—e.g., "Worship Service Enhancements"):

Donation amount(s): _____

Return your donation, with this form, to the church office (1133 Reston Ave., Herndon, VA 20170). For more donation options, see the FAQ section on page 2 of this booklet.

Questions? Contact Business Manager, Georgia Thorstenson, georgia@gslcva.org.

*"You should each give, then, as you have decided,
not with regret or out of a sense of duty; for God loves the one who
gives gladly." (2 Corinthians 9:7)*

*Building up God's people
through His Word
for His world*



1133 Reston Avenue
Herndon, VA 20170
703-437-5020

<https://gslcva.org>



<https://vimeo.com/gslcva>



<https://youtube.com/gslcva>

facebook

<https://facebook.com/goodshepherdva>